



There's no place like *Leelanau*.

Conserving the Land, Water and Scenic Character of Leelanau County

2022 Annual Report



From Your Director

Goodness is the only investment that never fails.
— Henry David Thoreau

As we head into our 35th year, I wanted to take a moment to say thank you.

Your support in 2022 enabled the Leelanau Conservancy to protect 600 additional acres of our awe-inspiring peninsula, including its clean water, healthy wildlife habitat, local food and farming heritage, climate resilience, and public access to health and recreation. Our gratitude to you, our truly wonderful donors, volunteers, staff, and board members past and present, and of course our dear founders Ed and Bobbie Collins, is immeasurable. Three and a half decades later, Leelanau continues to be a place that inspires a deeply felt and ever-present connection between each of us, and to Leelanau itself.

In 2022, we neared almost 17,000 acres protected since our founding in 1988. As satisfying as this running total has become, the stories of love for the land and water, and of the family histories that land preservation is now and forevermore a part, make this work about so much more than numbers and acres. I can tell you this, it is truly moving to bear witness to the smiles emblazoned on the faces of such good people like Judy Frederick, whose story you will read in the pages following, who have just given the world, for all posterity, a profound gift of beauty and integrity. I don't have all the right words, but there's joy and respect and gratitude and wonder beyond description there.

Like you, like the Inghrams, Finnegans, Lawtons, and so many others, I deeply believe in Leelanau's beauty, ecological integrity, and sense of place that brings people together with a passion for a common purpose—to deliver this astonishing peninsula to the coming generations with all its natural splendor intact. It is profoundly humbling to belong to a community so committed to the ideal that

healthy land, water, and air are not merely goals, but precious treasures easily lost but for an unceasing toil and enduring reverence for them.

Our work is far from finished; we have nearly 20 more projects in the works already for 2023 and undoubtedly many, many more to come in the years ahead. Our work together stands out as a bright light on a planet constantly faced with human-made change. Together, I know that we will hold onto the best of the blessings nature has given us, because I believe in the goodness of people—people like you. And I know you believe too.

Sincerely,

Thomas Nelson
Executive Director

Cover photo and photo right
by Mark Smith



Board Chair's Message

*"I alone cannot change the world, but I can cast a stone
across the waters to create many ripples."*
— Mother Teresa

Given the gracious opportunity to put words to a page regarding my first year as board chair, I find myself asking "What does conservation advocacy mean to most people?" I am curious about the split between keeping things the same or pressing for change. What do you think it is? 50/50? I clearly see both sides playing out in our conservation work.

We are here to conserve and preserve the natural lands, working farms, forests, wildlife corridors, riparian buffers, and clean water. To safeguard the environment, sometimes we need to work hard to keep things the same, and sometimes we need to prepare for and embrace transformation, provided the focus is always on promoting the Conservancy's mission.

Advocating for "same." The goal of land conservation is generally to preserve the land in its natural state as much as possible, making sure that it stays healthy and can support life well into the future.

Advocating for "change." This often involves preventing certain types of development, but also can include climate change mitigation tactics, land and habitat restoration, or the conversion of developments back into more natural habitats.

There are certainly numerous dynamic economic and environmental shifts that require us to be flexible and adaptive. Three years of pandemic tested us in ways that no one could have predicted. However, fueled by your generous donations and executed by the amazingly talented Conservancy team, 600 protected acres were added to the books in 2022, and some very ambitious fundraising goals were met and even exceeded. This is a stunning effort and sets us up well for the future.

2022 was a year of transformation and development for the Conservancy staff and leaders. The Board witnessed a virtual

metamorphosis as they tackled sensitive topics. They impressed upon us the importance of continuing to honor and learn about the Anishinaabeg, Grand Traverse Band Ottawa and Chippewa Indians' historical significance and generous continued care of the land. Together we explored the topics of diversity, equity, and inclusion ("DEI"), not only to ensure that the Leelanau Conservancy continues to be a great place to work, but with an eye towards accessibility of preserved public lands. I am so proud to work alongside these smart, caring, supportive, good humans. They truly walk in the path of their passion, and success follows.

As board chair, my role will be one of facilitator, keeping board meetings on track and following the organization's bylaws, while monitoring the performance of the board to make sure we are always adding value. It is hard work and the expectations for board members are high even though we are all volunteers. Board members are expected to exemplify servant leadership, practice effective governance, and participate in committee discussions and activities that play to our strengths in order to help the Conservancy team achieve stated goals. We have a very strong slate of directors, and I could not be more excited to serve in this new capacity.

The Conservancy team is energized and already making progress on the recently updated Strategic Land Conservation Plan. The goals are aggressive, and each year we wonder how we will top the last. It is a real thrill when we do. None of this would be possible without our generous donors. We know that it is you whose advocacy makes this success possible, and we are forever grateful for your support.

Amy Tennis
Board Chair

Longtime Volunteers Make \$1 Million Gift



Aerial Photo by Drew Palmer

Bart and Gail Ingraham have made a gift of more than \$1 million to the Leelanau Conservancy through their estate plans. This generous gift will protect more than 880 acres of farmland in perpetuity and provide funds to enable new access by land to a recent addition to the Conservancy’s Cedar River Preserve.

The Ingrahams’ gift to the Farmland Protection program will permanently protect farmland in Leelanau County, much of which includes critical wetlands and established forests. This gift along with your support of Farmland Protection also preserves habitat corridors for native wildlife, breathtaking scenic vistas, and maintains contiguous blocks of agricultural land, which is essential for a vibrant farming community and local food.

“Bart and Gail had a real love of nature, the beauty of the natural world, and this area. And that shows in this tremendous gift they’ve made,” says Jim Nugent, Leelanau Conservancy board member, farmer, and friend of the Ingrahams. “Bart always had a passion for agriculture from growing up on a farm. He was also a real pioneer in this area making compost when many had never heard of it.” Bart and Gail Ingraham ran Bellwether Gardens, which was focused on perennial gardens in Leelanau County, for more than 30 years.

The Cedar River Preserve is known for its unique microhabitats that support more than 272 native plant species and has been called Northern Michigan’s Everglades. Previously, the Cedar River Preserve has only been accessible by small watercraft on its water trails. This generous gift from the Ingrahams will enable the Leelanau Conservancy to provide improved public access through its newly acquired dry-land portion of the preserve. This area includes a 1.4-mile hiking trail with beautiful views and a vernal pool.

In recognition of the Ingrahams’ generosity, this portion of the Cedar River Preserve will be named in their honor. The Leelanau Conservancy looks forward to welcoming you to The Bart and Gail Ingraham Preserve at the Cedar River Preserve in late 2023, upon completion of the new entrance.

Along with being artists and running a landscape-design business, Bart and Gail always made time to help as volunteers at the Leelanau Conservancy. They could often be found in the office stuffing envelopes or out on the trail pulling invasive species such as garlic mustard.

Though Bart and Gail have passed, the generous gift they have left in their estate plans has ensured that the Leelanau County they loved will continue to be protected and preserved for generations to come.

Lawton Granary and Surrounding 35 Acres are Protected

Landowners who work with the Leelanau Conservancy to protect their land do so for various reasons. Conservation easements have financial and countless environmental benefits, and for so many landowners, the decision to protect comes from a place of love and memories as well.

At the end of 2022, Bill and Barb Lawton protected 35 acres of land that meant so much to them, Bill’s parents, and Bill’s children.

Getting Here

Bill’s parents, George and Doreen Lawton, enjoyed the outdoors and being close to nature. Before they bought the Northport property, George had built two cabins in other parts of northern Michigan. “Growing up, I remember going to the cabin he built by hand in Roscommon. There was an outhouse, no electricity, and a pump for water. On our way up, we’d pick up an ice block for the ice chest,” Bill chuckled. In his early college years, Bill’s parents bought the Northport property. “It was the early ‘80s. A friend of my dad’s purchased that property from the Petersons,” said Bill. The family friend was part of an investment group that had fallen in love with the property and bought it with the promise that the Petersons could live there as long as they wanted. Years later, when the 80-acre property was vacant, the family friend contacted George to see if he was interested in purchasing it; the land included a rundown farmhouse, barn, and granary. Already owning a farm downstate, the Lawtons were no strangers to farm life. They saw potential in the Leelanau property and purchased it.

Restoration

The plan was to fix up the granary so that Doreen

and George could stay in it while they were visiting and fix up the farmhouse to be rented. Once they were ready to retire, they would move into the farmhouse permanently. George’s brother had moved up to Leelanau years before and was farming cherries, and the couple had fallen in love with the slow, easy way of life that Leelanau offered.

They sold the 40 acres on the east side of N. Jacobson Road to George’s nephew, and put their plan to restore the buildings into action. One winter George and his nephew came to visit. “It just happened to be a winter where there was four feet of snow on the ground,” Bill said. “Dad came back and said, ‘There’s no way we can retire up there.’” Though the granary and farmhouse had been restored, the plan had changed. George and Doreen sold the farmhouse and the surrounding five acres with it. And though the granary and remaining 35 acres wouldn’t become their home, it would remain their solace and favorite place.

Protecting the Rest

When George passed in ‘94, the granary and surrounding land became extra special to Bill and Doreen. She had worked on restoring the buildings with George, and they shared countless memories as a family in their corner of the universe. “My mom was still working when he passed. She loved the place just as much as dad had and took great care of the place after him.” Doreen was an artist and used the barn as an art studio. She faithfully cared for the property until a few years before her passing in 2021.

Bill worked with his brother and sister to keep this property in the family. It meant so much to their parents and them. “My mom was a huge fan and supporter of



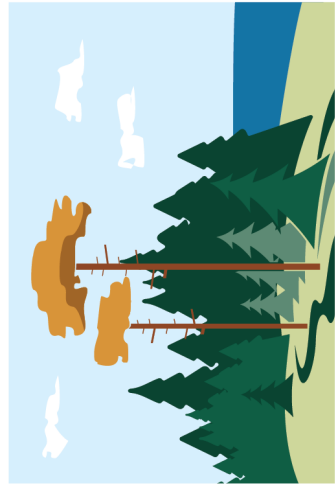
Photo by Mark Smth

the Conservancy,” Bill said. “I got in touch with Kim Hayes last spring, and we worked together on creating a conservation easement.” Bill has three daughters who love the property. He and Barb are excited for them to love and care for the place as he and his parents had before.

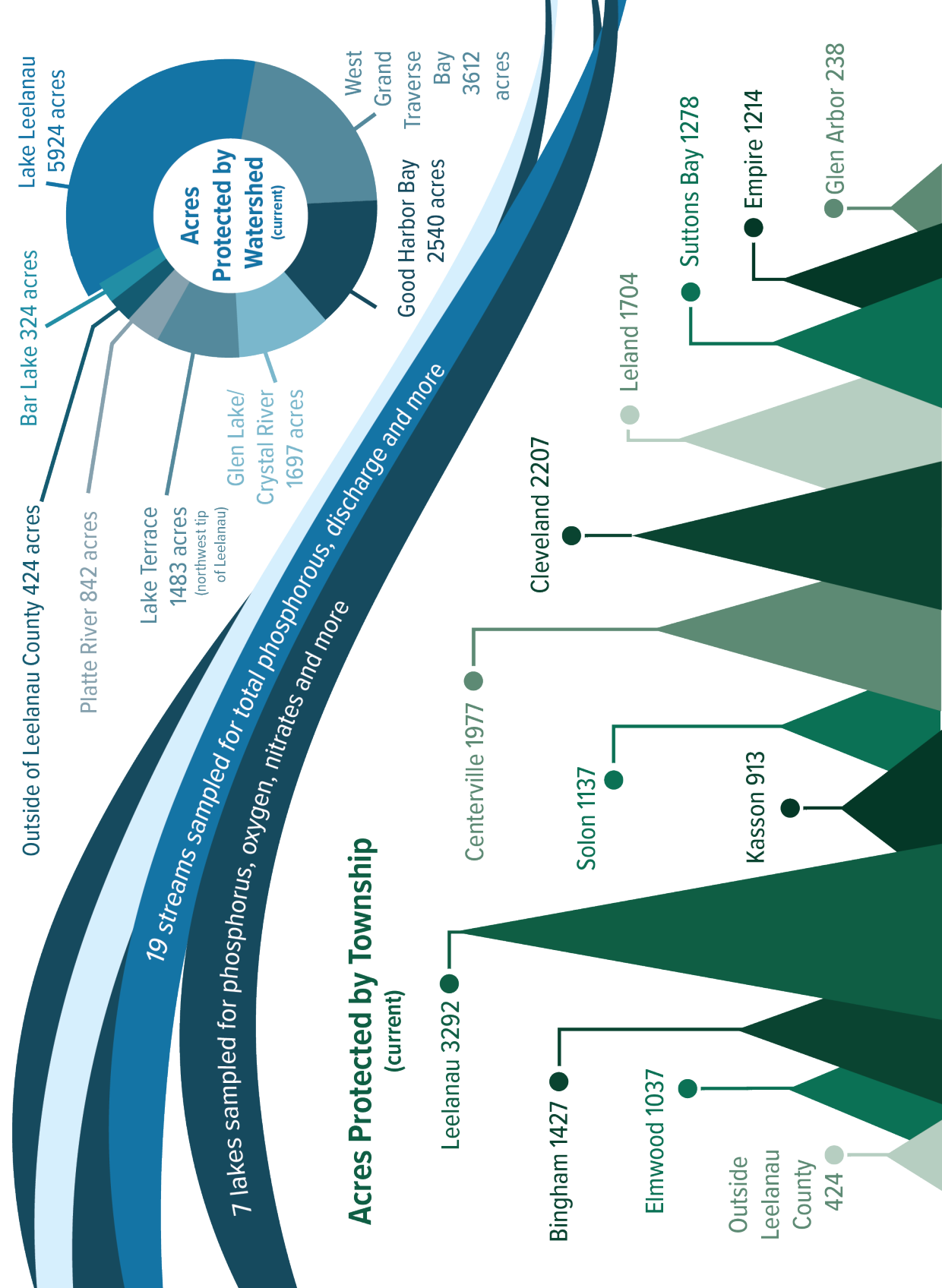
“The numerous conservation values now permanently protected on the Lawton Granary CE made this project rewarding to be a part of. These include being in a mapped conservation corridor, protection of hardwoods and conifer forestland, ridgeline protection with views of West Grand Traverse Bay and Lake Michigan, proximity to other protected lands, and protection of a small agricultural area. The Lawton family has created a legacy of love for this land,” said Farm Protection Director Kim Hayes.

The land has a past life of being a dairy farm and then a Christmas tree farm. “A portion of it had been largely cleared of trees when it was a dairy farm, so my parents planted a Christmas tree farm,” said Bill. “Most of the trees went unharvested and we have a lot of Douglas and Fraser on the property. It’s become a tradition to cut one down each year for Christmas. It’s special for us, knowing we have a Christmas tree that was, many, many years ago, planted by my parents.”

Leelanau Conservancy 2022: Year in Review



619 Acres Protected in 2022, 16,847 Total Acres Protected (all time)



3763 acres of land open to the public

2 new farms protected, totaling 341 acres

15.79 miles of mountain bike trail open to the public

87,719 visitors to our natural areas

28 natural areas as of 2022

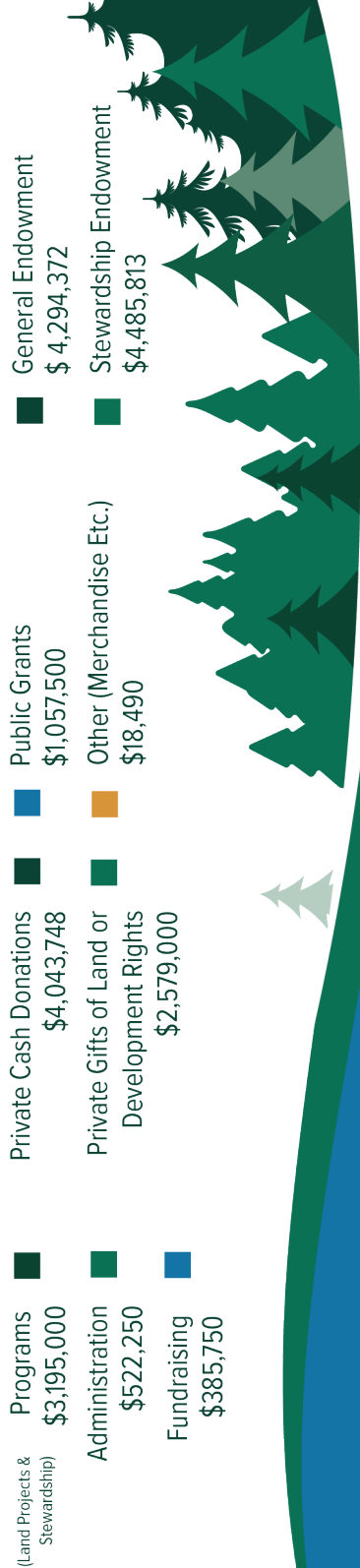
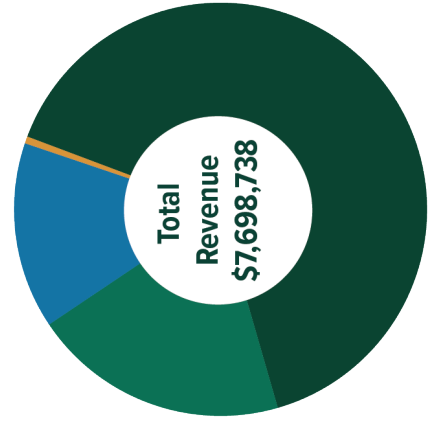
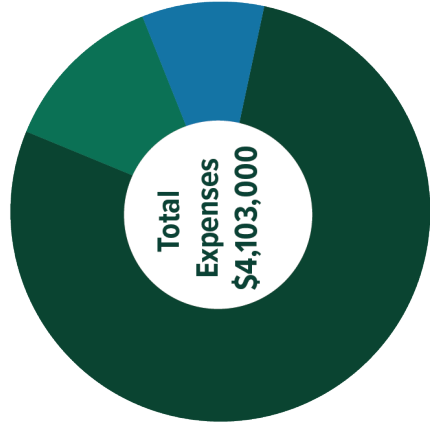
40.61 miles of public trails maintained



3338 donors gave

200 conservation easements monitored

393 trees planted





Finnegan Family Donation Expands Hatlem Creek Preserve by 82 Acres



Near the edge of Glen Lake is Hatlem Creek Preserve. Spongy wetlands and an unofficial trail in the form of an old two-track make the preserve one of our less traveled natural areas. But in the absence of regular visitors, the wilderness within Hatlem thrives.

It brings us great joy to report that Paul and Mary Finnegan have generously donated 82 additional acres to Hatlem Creek Preserve. This addition bumps Hatlem up to our sixth largest preserve and provides even more critical habitat for the wildlife that call the preserve home.

Wetlands are one of the world's most productive habitats. Hatlem Creek provides shelter for fish, shellfish, migrating birds, and countless plant species. The creek also moderates floods, maintains high water quality for Glen Lake, mitigates climate change, and the list goes on. Though they are ecological workhorses, wetlands are disappearing at an alarming rate. About 35% of the world's wetlands were lost from the 1970s to 2015. The

loss has been accelerating with each passing year since 2000 due to development and climate change.

Hatlem Creek flows into Glen Lake and occupies about a half mile of creek frontage. Wetlands and the creek's importance to water quality have made this preserve and its surrounding wetlands a conservation priority for the Conservancy.

In 2017 we expanded the preserve by 32 acres and protected more of the fragile wetlands, groundwater springs, and creek frontage. With this amazing new donation from the Finnegans, the preserve has now more than doubled in size to 154 acres.

"My grandparents have been visiting Leelanau since 1928," Mary said. "So, my entire family has this wonderful, long history up here." After several summers of renting, Mary's grandparents bought property on the east side of Glen Lake. Mary and Paul have also gradually bought property, including wetland acreage along Hatlem Creek. "Sometime 10 or 15 years ago, we were talking to



Matt Heiman, and he told us that this land at Hatlem was going up for sale and was going to be sold in lots," Mary said. "The Conservancy was worried about the sale because it's significant land for the preservation of the lake. So, we bought it with the idea that it would be preserved, and we would ultimately donate it to the Conservancy."

"The property is quite amazing and supports some of the most unique and sensitive conservation values found in Leelanau County," explains Director of Natural Land Protection Matt Heiman. At the heart of the property lies approximately 66 acres of diverse, high-quality wetland communities containing multiple unnamed groundwater streams. The unnamed groundwater streams, including Hatlem Creek, have documented populations of the Federally Endangered Michigan Monkey Flower. The property also contains over 1,000 feet along both banks of the main stream of Hatlem Creek and approximately three acres of Hatlem Pond. Adds Matt, "There's a real nice pocket of mature mesic northern hardwood forest along W. MacFarlane Road. Truly an ecological gem that has more than doubled the size of our existing Hatlem Creek Preserve."

With their long history in Leelanau and Glen Lake, the Finnegans are happy to be a part of preserving a lake they love and the wildlife surrounding it. Mary shared, "We love the land, and we love the water."

Photos by Mark Smth



2022 At a Glance

1. LC staff took a hike at Stites Natural Area in Suttons Bay with our 2022 AmeriCorps members LeighAnna Peck and Emma Somers to wish them farewell. The knowledge and hard work they brought to last year's projects was significant, and we enjoyed our time with them.
2. A winter tree planting at Clay Cliffs Natural Area had a great turnout! A crew of staff and volunteers planted about 150 trees at Clay Cliffs. Tree varieties included shagbark hickory, witch-hazel, American basswood, black cherry, tuliptree, quaking aspen, bur oak, Allegheny serviceberry, and were planted to maintain forest health as we lose beech trees to beech bark disease.
3. Our stewardship team installed these beautiful crib steps at Whaleback Natural Area. This project spanned over the summer and fall and required lots of energy, effort, and careful planning. These steps will help users safely hike the trail and prevent future trail widening and erosion, a win-win!
4. Tamaracks at the Cedar River Preserve are dazzling in all seasons, but are the loveliest in autumn.
5. Puffball mushrooms can be found on damp ground or rotting wood. Their name comes from the brown dust that bursts out of their spores. This one was found at Swanson Preserve, filled with rainwater and a cedar leaf.
6. A gray treefrog found on a dogwood at Chippewa Run. Depending on their background environment, these treefrogs range from green to gray. Though they mostly eat insects, they will eat a frog if it is smaller than them and the opportunity arises.
7. Property & Trail Maintenance Specialist Chad Jordan pulls up a non-native shrub to make room for native species to be planted at the Leland Village Green.



8. Volunteer Chuck Dickerson shows AmeriCorps members Emma Somers and LeighAnna Peck how to transplant showy lady's slipper orchids.
9. A northern waterthrush gets a bird band at Chippewa Run Natural Area.
10. Gone south for the winter. Chad Jordan found this snow-filled winter nest at Clay Cliffs Natural Area.
11. Among many other updates, we have new kiosks at Palmer Woods Forest Reserve! Our natural area kiosks are a terrific way to get the most out of your visits. Check them out before you begin your journey. Pictured here is Chad Jordan, Land Steward Caleb Garone, Becky Hill, and LeighAnna Peck.
12. Land Steward Emily Douglas led fern species training for our docents. The Helen and Dan Palmer Fern Garden at Palmer Woods is home to more than 27 native fern species. Stay updated on our docent-led hikes by signing up for our e-newsletter or visiting the "Events" tab at leelanauconservancy.org



Water Quality Questions with Conservation Easement Program Manager Chase Heise



Photo by Sheen Watkins

1. How many streams and lakes do we monitor?

We sample 19 streams and 7 lakes—once per month from May to October.

2. How does the water quality look as of last year?

The Leelanau Conservancy’s goal is to gather and observe data over a long period of time, as opposed to drawing conclusions from a single year. Overall trends show the lakes in our region to be oligotrophic and indicative of very good water quality. You’ll recognize these oligotrophic lakes as being clean and clear with high levels of oxygen and low in plant nutrients.

3. What do we sample in a stream vs a lake?

In streams we use a flow meter to calculate the discharge at that particular time, as well as record the air and water temperatures. We also take a physical water sample, which is analyzed in a laboratory for total phosphorus.

For lakes we monitor for a large number of parameters at multiple depths utilizing our Hydrolab, which is a specialized piece of sampling equipment. At each lake we record dissolved oxygen (DO), pH (acidity), oxidation reduction potential (ORP), and conductivity. Water clarity is measured using a Secchi disk. We also take physical water samples at multiple depths to be analyzed for nitrogen and total phosphorus, as well as a filtered surface sample of Chlorophyll A. Each of these measurements help us determine the health of the lake over time.

4. How much water quality data do we have? Who can access it?

We currently have more than 30 years of water quality data dating back to 1991, the longest-running data set in the county. It has been utilized by many lake associations, local and national government agencies, as well as private individuals. Anyone can access our water quality data on our website, which is available in Excel format.

5. Can I get involved with the Conservancy’s water quality program?

Each year we recruit new members to be part of our stream-sampling program. These dedicated volunteers are trained on our equipment and collection methods, and independently sample their assigned streams once a month throughout the sampling season.

Those interested can contact our volunteer and events manager, Lindy Kellogg at lkellogg@leelanauconservancy.org.





115 Acre Frederick Farm Protected



The Frederick Farm was a favorite place for Judy Frederick’s family to spend time. Judy is certain that her parents, Jim and Carol Frederick, would be thrilled to know that as of December 2022, their farm was forever protected and preserved by a Conservation Easement (CE) through the Leelanau Conservancy.

The Fredericks first started coming to Leland in 1965. In 1970, they settled in Leland year-round. At this time, Judy was off at college. She smiled when telling the story of how, in 1995, her dad happened to buy 115 acres including a cabin in Maple City.

“While my parents loved Leland, they also loved the peace and quiet of the woods. Dad, at my urging, started looking for large parcels of land. After several misadventures exploring the UP, I noticed an ad in the Enterprise. It sounded so good that Dad was willing to cancel his golf game. A few hours later his offer was accepted,” said Judy. “We were lucky to find such a beautiful large parcel only 20 minutes from home.” The previous owners purchased the cabin from Sleeping Bear Dunes National Lakeshore in the mid 70’s for only \$6.40 and subsequently moved it

to the property. Christmas trees were being grown on the front 18 acres, but it was so much more than a Christmas tree farm. Most of the property remains heavily forested with rolling hills and private hiking trails. “Initially we sold U-Cut Christmas trees, and I also made wreaths and joined the Michigan Christmas Tree Growers Association. It was fun while it lasted,” Judy shared.

When Judy’s father died in 2017, she inherited the farm and had the overgrown and diseased Christmas trees removed. This 18-acre portion of the land has now been cleared so it can be re-planted with hardwoods. It is part of a reforestation project under the guidance of the Department of Agriculture and Leelanau Conservation District.

“Throughout the years we found many fun ways to enjoy the property,” says Judy. “One of my favorite memories is when we hosted The Dog Party as part of the Conservancy’s annual picnic/auction. Fifteen dogs were invited, and each dog was allowed to bring four humans. The party included an off-lead hike through the woods, barbecue, dog games, and many prizes.

It was so much fun, they all came back the next year. Happy dogs make happy donors.”

The farmland is adjacent to another protected farm, creating an invaluable corridor for wildlife. Judy has always been keen on working with the Conservancy to protect the land. “The property is an emotional thing for me. Mom, Dad, and I spent so much time there running our beloved dogs. We named all the trails. There are so many fond memories.” Judy also said that she has peace of mind knowing that her farming neighbors won’t have to worry about the property being developed. “I have the utmost respect for our farmers and their way of life. This decision was very easy for me. I want to do good for the place that has done so much good for me.”

Learn more about the financial and ecological benefits of protecting your farm with a conservation easement by contacting Farm Protection Director Kim Hayes at khayes@leelanauconservancy.org.

A Word from Dick Ristine on Planned Gifts

“Deferred giving—what’s that?”

That was my response when Dad told me in 1982 that he was retiring from one of the nation’s largest charitable foundations to become director of deferred giving at Wabash College, his beloved alma mater. I had long known that the field of philanthropy was important to him and the financial backbone of the many not-for-profits he had served, but deferred giving was a new concept to me. He explained that, while it also goes by such names as planned giving, estate giving, and legacy giving, deferred giving describes the support for a valued charity from a donor’s estate.

Unlike lifetime contributions to an operating or capital campaign, Dad further explained that donors can plan for what is typically a one-time gift from their estates. He said planned giving can be an opportunity to arrange for the largest single gift a donor has made to their favorite charity. Those planned gifts can be directed to a particular initiative of the charity or can be added to the endowed funds of the charity for its overall mission.

While planned gifts can be arranged via sophisticated estate planning tools, or changing one’s will to direct a fixed amount or a percentage of one’s estate or a particular asset to the charity, they also can result from taking the simple step of changing a beneficiary designation on a life insurance policy or a retirement account—no lawyering required.

Growing up in rural central Indiana, I knew that Dad loved being outdoors. Occasional visits to the small

family farm that his mother owned helped me learn about the importance of crop rotation for maintaining soil quality. He also explained that no-till farming helped to reduce chemical usage and fossil fuel consumption.

Walks with him in his forest brought wonderful lessons about tree species and the creatures who inhabited the forest. Although Dad was a “tree hugger” who delighted in talking to his trees, he explained that trees are a renewable resource. Thus, about every 15 years, Dad brought in the state forester to plan a selective tree harvest. He explained that beyond a certain point, some trees would naturally decline, so he sought to harvest them at their prime, making room for other quality trees to thrive. Because he considered it appropriate to maintain biodiversity in the woods, we planted new saplings of multiple species after each harvest.

When Dad retired to Leelanau County, where he had vacationed since the age of two, he sought opportunities to fully engage in the life of the peninsula. It was natural for him to seek out a land trust with which to get involved in his new community. Dad was impressed by the impact that the Leelanau Conservancy was making in protecting the natural resources of the county. He found particularly appealing its efforts to protect family farms and water quality, and the Leelanau Conservancy quickly became the primary focus of Dad’s volunteer efforts. Seeing the opportunity to build resources for the Leelanau Conservancy, which at the time did not have a formalized planned giving program, he helped it to establish such a program.



Dad was extremely proud that LC named its planned giving program for him. I hope that all who want to help ensure that many of Leelanau County’s beautiful natural resources are protected will join me in making a planned gift to the Richard O. Ristine Heritage Society of the Leelanau Conservancy.

Have you already included a gift in your estate plans? Let us know! We would like to welcome you into the Richard O. Ristine Heritage Society. The Heritage Society celebrates the planned gifts of our community each summer with a gathering and by recognizing your generosity in our publications. You can choose to remain anonymous if you prefer. Notifying us of your planned gift helps us to document and understand your wishes, and plan for the future! Contact Stacie Longwell Sadowski today at 231-994-3206 or ssadowski@leelanauconservancy.org for more information on how you can protect Leelanau County for future generations.

Founders Society

The Founders Society recognizes those donors whose generous support has resulted in cumulative lifetime giving of \$25,000 or more to the Leelanau Conservancy.

\$1 Million +
Barton J. Ingraham and Gail G. Ingraham Foundation
Edmund F. and Virginia B. Ball Foundation
Mr. and Mrs. William L. Fortune, Sr.
Miss Sally Reahard
Ann Stack
The Carls Foundation
Anonymous (1)

\$500,000 - \$999,999
Mr. and Mrs. Frank A. Bracken
Richard and Carolyn Chormann
Esperance Family Foundation
Mrs. Ruth S. Fairchild
Mr. and Mrs. John W. Fisher
George & Mary Ellen Gotshall
Mr. and Mrs. John H. Hoagland
Mr. and Mrs. Ronald L. Jones
Will and Joan Larson
Mariel Foundation
Mr. and Mrs. Eugene C. Miller
Clarence and Ruth Roy
The Brookby Foundation
Anonymous (1)

\$250,000 - \$499,999
Mr. and Mrs. Edmund F. Ball
Mario Batali and Susi Cahn
Rosemary R. Berardi and Carolyn R. Zaleon
Mr. and Mrs. Edward J. Collins
David Edelstein & Jennie Berkson
Mr. and Mrs. William L. Elder
Jeff and Nancy Fisher
George and Frances Ball Foundation
Enid and Rick Grauer
John T. and Shirley Hoagland
Mr. and Mrs. Addison Igleheart
Mr. Ron Lovasz
Larry Mawby and Lois Bahle

Andrew R. and Janet F. Miller Foundation
Mr. and Mrs. William Y. Gard
Dr. and Mrs. Daniel Palmer, MD
Robert J. Trulaske Jr. Family Foundation
Mr. and Mrs. Dudley B. Smith, III
Ms. Martha A. Teichner
The Herbert H. & Grace A. Dow Foundation
The Oleson Foundation
Mr. and Mrs. Warren H. Watkins
Ms. Margaret H. Watkins
Randy and Joan Woods
Anonymous (2)

\$100,000 - \$249,999
Barbara and Bill Alldredge
Americana Foundation
Ames Family Foundation
Andrew V. Kiselius Trust
The Ashken Family
Jennifer Baker and Stephen Fishbein
Paul Solli and Kristine Ball
Mr. and Mrs. John F. Ball
Maureen and Emil Brolick
David M. and Cara V. Cassard
Cherry Republic
Mr. and Mrs. Howard M. Dean
Ms. Laura L. Deibel
Mr. and Mrs. Gilbert A. Deibel
Dellora A. & Lester J. Norris Foundation
Jeanne and Bill Dennler
Francie and John O. Downing
Mr. and Mrs. Roger Edgley
Gina and John Erb
Ms. Julia M. Flowers
Mrs. Sue Frank
Frey Foundation
Jan Garfinkle and Mike O'Donnell
Mr. and Mrs. John T. Hackett

Mr. William B. Hall
Julie R. Weeks & Walter Hoegy
Mr. Michael J. Kane
Mr. and Mrs. Edward A. Ketterer
Rob Kurnick
Lake Leelanau Lake Association
Cameron and Edward Lanphier
Mr. and Mrs. William J. Leugers, Jr.
Mr. and Mrs. George Littell, Jr.
Mr. and Mrs. J. Michael Losh
M22 LLC
Mr. and Mrs. Steven Martineau
Craig A. and Nancy T. Miller
Mr. Lawrence J. Noling
Mr. and Mrs. John D. Norris
Mrs. Rose Oudemolen
Jan and Ray Pezzi
Philip S. Harper Foundation
Dr. James Rae & Arleen Rakas-Mitchell Rae
Ms. Catharine P. Roberts
Mr. and Mrs. Gordon H. Robertson
Mr. and Mrs. Marvin C. Rorick
Rotary Charities of Traverse City
Walter and Leslie Schmid
Mr. and Mrs. Richard Shuster
John and Mary Tris
Ms. Karen R. Viskochil
David and Sally Viskochil
The Wadsworth Family
Bruce and Betsy Wagner
Andy and Elizabeth Walters
E. Perry and Laurel (Wolfe) Webb
Anonymous (9)

\$50,000 - \$99,999
Kate and Dan Appel
William and Julie Bachman
Mrs. Martha B. Baker
Mr. and Mrs. Robert Biggs
Mrs. Alexander M. Bracken
Mr. and Mrs. Ronald D. Brooks
Barb and George Cochran
Colin Gardner Foundation
Consumers Energy Foundation
Jim and Patty Croom
Mrs. Jane W. Domke
Cheryl Donakowski

Hayward and Kathy Draper
Pete and Anne Eardley
Mr. Martin M. Easling
Mr. and Mrs. Bowman F. Elder
Liz and Gary Elling
Mr. and Mrs. John W. Fisher, III
Anonymous
Mr. and Mrs. Richard A. Funke
Mr. and Mrs. James C. Ganter
Edward Gergosian & Susan Hoekenga
Mr. and Mrs. Robert Goff
Jeff and Susan Green
Don and Ann Gregory
Curtis Hall and Susan Houseman
Mr. and Mrs. A. Grant Heidrich, III
Rich and Beth Hoover
HP Foundation
Mr. and Mrs. George H. Littell
Dr. and Mrs. Michael G. Lockhart
Mrs. Mary E. Lyons
Mahogany Foundation
Patrick McCarthy, MD
Annabel and Robert Moore
Mrs. Diantha C. Naftali
Mr. and Mrs. Richard D. Oliver
Orion Foundation
Mr. and Mrs. Alvin Owsley
Mr. and Mrs. Denis B. Pierce
Thomas S. Porter
Porter Family Foundation
Max R. and Linda J. Proffitt
Bill & Julie Pumphrey
Mr. John H. Ray
Mr. and Mrs. Ralph M. Reahard, Jr.
James and Gwendolyn Rich
The Ricord Family
Rollin M. Gerstacker Foundation
Mary Alice Schaff
Dr. William C. Scharf
Ms. Anne Schermerhorn
David and Lisa Schimmel
Mr. and Mrs. David T. Shelby
The Homestead
Anne Drackett Thomas
Ronald and Mary Tonneberger
Mr. Robert J. Trulaske, Jr.
W.K. Kellogg Foundation
Mr. George C. Weeks
Ben and Cindy Weese
Mrs. Shirley L. Wheatley
Elizabeth Bracken Wiese & Fred Wiese
Mrs. Nancy P. Williams
Mr. and Mrs. Peter Wilson
Mr. and Mrs. Harold G. Wilson
Michael and Kathleen Wysocki
Dan and Magee Gordon
Ms. Nancy Hoagland
Anonymous (8)

\$25,000 - \$49,999
Porter and Anita Abbott
Christie L. and Bruce T. Alton
William C. and Vicki Anderson
Gary and Christine B. Armbrecht
Sara and Rick Armbruster
Mr. and Mrs. George E. L. Barbee
Bruce and Caryl Barton
The Rt. Rev. and Mrs. Charles Bennison
Gershon and Suzanne Berkson
Caroline F. Brady
Broadleaf Foundation
Trish and Rick Bryan
Chuck and Susan Cady
Dianne Christensen and Roy Christianson
Richard Cooper & Jan Tennant
Michael and Susan Craig
Mrs. Treva N. DeJong
Dole Family Foundation
Mr. and Mrs. Michael L. Dow
Nancy and Berkley Duck
Tom and Gretchen Dunfee
Joseph Faggan
Family of Sally & Dan Johnson
Feather Foundation
William Fortune, Jr.
Mr. and Mrs. James W. Frederick
Drs. Marc and Linda Gallini
Richard and Silvia Gans
Mrs. Lurah Gilbert
Bob and Debbie Gilbert
Robert H. and Nancy M. Giles
Mr. and Mrs. Norbert W. Gits
Ellie Golden
Mr. and Mrs. John M. Gordon
Mrs. Elizabeth W. Gotsch
Grainger Matching Charitable Gifts Program
Dick Grout
Ms. Ann Hall
Mr. William S. Harper
Molly M. Harrison
Susan and Jack Hayes
David and Betsy Hendricks
Omena Fund
Heather Horton and Roger Parker
Mr. and Mrs. David B. Howard
Mrs. Jeannette Hunt
J A Woollam Foundation
Dr. Jeffrey Johnson
Thomas C. Jones
David and Linda Kaltenbach
Jeff and Cindy Kane
Paula Jo and Jamie Kemler
Art & Kim Kubert
Thomas and Bridget Lamont
Mr. John Langdon
Grey Gables

Jeff Later & Betsy Donahue
Nancy and Bud Liebler
Christopher J. Lingle
Frank and Conchita Lockhart
Mary and Bill Loveless
Eleanor Luedtke
Dr. and Mrs. R. William Lustig
David and Louise Lutton
Mark and Lynne Lyons
Bill McCrory & Leslie Maclin
Mr. and Mrs. John C. Manix
Mr. and Mrs. William F. Marsh
Mr. and Mrs. Archibald McClure, III
Dr. and Mrs. Robert J. McElroy
Mr. and Mrs. Stephen J. McShane
Luvie and Scott Myers
Mrs. Gertrude M. Oliver
Dr. and Mr. Nels L. Olson
Dr. and Mrs. Patrick Oriel
Tom and Martha Phillips
Joshua Pokempner & Gretchen Gardner
June and Jerry Powley
Jim and Marie Preston
Dr. George J. and Carol D. Quarderer
The Paul and Katy Rady Family
David and Jean Redfield
Ms. Betty V. Rhoades
Mr. and Mrs. Richard O. Ristine
Kati Rooney & Jim Hennessey
Chris Rowney and Siobhan Cafferty
Ms. Carolyn T. Russell
Mrs. Frances Petty Sargent
Jim and Bonnie Scarlett
Jim and Jayne Schafer
Jack and Susan Seaman
Jon and Diana Sebaly
J. Donald and Angela Sheets
Barbara and Frank Siepker
Paul Skiem and Beth A. Brooks
Doug and Sally Byrum Smith
Nancy and David Smith
Mr. and Mrs. John P. Snedeker
Ms. Joanne L. Sprouse
Jim and Beth Stephens
Richard and Stacie Stephenson
Mrs. Candace K. Sutfin
The Gordon J. Hammersley Foundation
The Shelby Family
Mrs. Louise Thomas
Tom Russell Charitable Foundation
Mr. and Mrs. G. Neil Tyler
Anne Miles Vaughan
Mr. and Mrs. Lawrence J. Verdier
Barbara W. Vilter
Mr. John B. Watkins
Tim Werner and Petra von Kulajta
Dr. and Mrs. Robert L. Willard
Wayne and Sharon Workman
Anonymous (16)

Gifts of Land or Development Rights

More than 200 individuals and families have made gifts of land or development rights to the Leelanau Conservancy since our founding in 1988. The generosity of these donors allows the Leelanau Conservancy to leverage fundraised dollars to conserve even more of what you love most about Leelanau. The names below reflect donors from 2022. For a list of all land and development rights donors, please visit leelanauconservancy.org.

The Finnegan Family Judy Frederick OL Bahle Farms
Barb and Bill Lawton The Tom and Linda Shimek Family



Photo by Sheen Watkins

2022 Donors

Thank you for your gifts. We strive for accurate record keeping. If your name has been omitted or listed incorrectly, please contact Paris Morse, Development Director, at 231-994-3212 or pmorse@leelanauconservancy.org.

* indicates Sustainers Circle Member

\$10,000+

Americana Foundation
Andrew R. and Janet F. Miller Foundation
Dan and Kate Appel*
Sara and Rick Armbruster*
Ian & Nancy Ashken*
Ashken Family Charitable Foundation, Inc.
Jennifer Baker and Stephen Fishbein*
Kristine Ball and Paul Solli*
Matthew & Leslie Baranowski*
The Rt. Rev. and Mrs. Charles Bennison*
Mr. and Mrs. Emil Brolick*
CDM Foundation
Richard Chormann*
Jim and Patty Croom*
Laura L. Deibel*
Dellora A. & Lester J. Norris Foundation
Jeanne and Bill Dennler*
Hayward and Kathy Draper*
Pete and Anne Eardley
Roger & Karen Edgley*
Edmund F. and Virginia B. Ball Foundation
Liz and Gary Elling
Gina and John Erb*
Julia M. Flowers*
Jan Garfinkle and Mike O'Donnell*
Dan and Magee Gordon*
Grand Traverse Regional Community Foundation
Green Brick Foundation

Mr. and Mrs. John R. Haley
Mr. and Mrs. Peter Haley
Curtis Hall and Susan Houseman*
Walter Hoegy*
HP Foundation
Robert and Laura Hughes
Ingraham Foundation Trust
Mr. and Mrs. Ronald L. Jones*
Jamie and Paula Jo Kemler*
Rob Kurnick*
Cameron and Edward Lanphier*
Will Larson
John and Cynthia Lhost*
Mr. and Mrs. George Littell, Jr.*
Ron Lovasz
Eleanor Luedtke*
M22 LLC*
Mariel Foundation
Lisa Jorgensen Markevich*
Steven & Deborah Martineau*
Andrew R. and Janet F. Miller Foundation*
Jim and Jan Norris*
Old Trail Foundation
Jan and Ray Pezzi*
Mr. and Mrs. Denis B. Pierce*
Plante Moran Trust
John H. Ray*
Robert J. Trulaske Jr. Family Foundation
Jim Schafer*
Dr. William C. Scharf*
David and Lisa Schimmel*
J. Donald and Angela Sheets*
Jeff Smisek & Diana Strassmann*
Karen Spencer
Martha A. Teichner
The Brookby Foundation
The Gosiger Foundation
The Sauerland Foundation
Ronald and Mary Tonneberger*
John and Mary Tris
Bruce and Betsy Wagner*
Larry Webb*
Mr. and Mrs. Peter Wilson*
Randy and Joan Woods*
Anonymous (7)

\$5,000-\$9,999

American Endowment Foundation
Mario Batali & Susi Cahn*
Melissa Warner Bow*
Jeffrey & Lauren Brokish
Diane Dean
Francie and John O. Downing
Family of Sally & Dan Johnson
Farm Club
Mr. and Mrs. John W. Fisher, III*
Rick & Silvia Gans*
Rick Grauer*
William P. Heidrich



Nancy Hoagland*
Beth Hoover*
Dr. Jeffrey Johnson*
Linda Johnson
David and Linda Kaltenbach*
Art & Kim Kubert*
Grey Gables*
Mr. and Mrs. Henry Lederman*
Dr. and Mrs. Michael G. Lockhart
Mr. and Mrs. J. Michael Losh
Mr. and Mrs. Donald K. Marik*
Dr. and Mrs. Patrick McCarthy*
Mr. and Mrs. Archibald McClure, III
John Murphey & Marcie Meditch
Scott and Luvie Myers*
Oak River Foundation
Mr. and Mrs. Richard D. Oliver
Oliver Family Foundation
Dr. and Mrs. Daniel Palmer, MD*
William D. Peace
Tom and Martha Phillips*

Bill & Julie Pumphrey*
Dr. George J. and Carol D. Quarderer*
Shugart Builders
Rick and Donna Simonton*
Doug and Sally B. Smith*
Ann Morris Stack*
Mrs. Sally Viskochil*
Carl Walker and Elizabeth Rogers*
Elizabeth and James Waters*
Mrs. Barbara V. Wilson*
Bill and Rita Witler*
Anonymous (1)

\$2,500-\$4,999

George Ball
Carsten Beith*
Bel Lago/French Valley Vineyards
Mr. and Mrs. Robert Biggs*
Jonathan and Julia Birge*
Kathleen and John Birney*
Andrew Byrne
Mary Beth and Phil Canfield
Marion and Gene Cartwright*
David M. and Cara V. Cassard*
Cherry Republic*
Dianne Christensen and Roy Christianson
Mr. and Mrs. Edward J. Collins*
Tim & Susan Collins
Dr. and Mrs. Michael W. Craig*
Cummings Christensen Family Foundation
Dr. Scholl Foundation
Mary & Joseph Duchi

Mary L. Forster, M.D.*
Jack Fox and Katrina Schuur
Jeff and Susan Green*
Greenleaf Trust
Mr. and Mrs. Steve Grossmann*
H. Fort Flowers Foundation, Inc.
Pat and Linda Hanniford
Anne Harper and Greg Nobles*
Mr. and Mrs. David M. Hayes
John Imboden*
Berit Ingersoll-Dayton
Mr. and Mrs. Edward A. Ketterer*
Lucy L. Lambert*
Mr. and Mrs. Jeffrey S. Lee*
Dr. Kathy Lippert
Larry and Melisa Miller*
Tania and Carter Neild
Theresa Neumann
Paul Olsen & Meredith Wallace
Dr. and Mrs. Patrick Oriel*
Andrea Ray Smith
Red Oak Foundation
William Reighard
Mr. and Mrs. John M. Rockwood, Jr.
Martha and Dan Rogalny
Rich and Gwen Schwabauer
Nancy and Tom Shepherd*
Mr. and Mrs. Allan Smith*
Nancy and David Smith*
Jim and Beth Stephens*
Mr. and Mrs. George Strietmann*
Nancy A. Swift
The Nancy M. & Victor S. Johnson Jr. Foundation
Bill and Betsy VanWesten*
Barbara W. Vilter*
Greg Vogt and Claire Eberwein*
Mr. and Mrs. Warren H. Watkins*
Mary Cusick and David Wible*
Arlington & Carol Williams
David and Roberta Williams

\$1,000-\$2,499

Porter and Anita Abbott*
Mark and Connie Adamson*
Susan Ager & Larry Coppard*
Jane E. Aisenbrey
Suzanne Albrecht and Steve Redding*
Dorothy Stites Alig & Will Higgins
Bill Allen & Susan Moriarty*

Peter and Vicki Alpaugh*
Christie L. and Bruce T. Alton*
Deborah Armstrong
Art's Tavern
Aspire North Realtors
AYCO Charitable Foundation
Peter and Kris Baldo*
Mr. and Mrs. David F. Ball
Mary Barber*
Mr. and Mrs. Bruce Barton*
Kari & Fred Barton Foundation
Mary Baughman
Gregg Baustian and Jenny Puvogel*
Ginny and Scott Beall*
Drs. Robert and Nancy Beekman*
Dr. Carl Benner
Mr. and Mrs. Gregory J. Besio*
Chari Binstadt*
Bryce, Emily, Kensi & Annika Binstadt
Eric & Anne Blanchard
Brian Blood
Mr. and Mrs. Robert W. Bloom
Mr. and Mrs. David A. Bohmer*
Kurt M. Bowden & Nancy Dady*
John B. Bowers & Linda Stevens
Alena and Andrew Bowman*
Richard and Barbara Bowzer*
Alexander and Sally Bracken*
Michael and Joan Brennan
Jere and Gail Brown*
Judy & Meg Brown
Camilla Buehler*
Tom and Marsha Buehler*
Mr. and Mrs. Randall Burkert
Frank and Sharon Bustamante
Gloria & Leith Butler
Chuck and Susan Cady*
Dr. and Mrs. Ronald Caldwell
Kyle and Shira Carr*
Cedar Street Charitable Foundation
Al Chaffee*
Jim and Gwen Chesterfield*
John and Liz Clark
Paul and Patty Cobb
Don and Marylou Coe*
Community Foundation Serendipity Endowment
Richard Cooper & Jan Tennant*
Mr. and Mrs. E. Neal Cory, II*

Romona and Bill Crain
Kevin & Sylvia Culp
James and Gayle Davis
Mrs. Treva N. DeJong*
Aric & Marie Dershem
Tom and Audrey DeVault*
Ron and Marion Dickel
Mr. and Mrs. Charles W. Dickerson
Nancy L. Dotlo*
Mike and Stephanie Dow
Elaine C. Driker
Nancy R. and Berkley W. Duck*
Gretchen Dunfee*
Elizabeth Dunn and Robert Mitchell, M.D.
Mr. and Mrs. John R. Dye*
EA Companies, Inc.
David Edelstein & Jennie Berkson*
Jack and Karen Elder*
Leontina Elder
Bill and Mary Fallon*
Mr. and Mrs. Gregg Fazzoni*
Jonathan Feld and Shelley Longmuir*
David Feld
Susan J. Finke*
Mr. and Mrs. G. Stephen Fisher*
Mr. and Mrs. Jeffrey E. Fisher*
Mr. and Mrs. Jerrold M. Fisher*
Peter and Cassidy Fisher
Mr. and Mrs. Brian C. Follansbee
William Fortune, Jr.*
Madeleine and Mark Francavilla*
Edmund Frank & Eustacia Su Douglas Freeman*
Jim and Sally Friend*
Jane L. Gale*
Carl and Barbara Galeana*
Drs. Marc and Linda Gallini*
Dilys Tosteson Garcia & Lola Jackson*
Gene and Kathy Garthe*
Mr. and Mrs. Andrew Gerben*
Jeffrey and Marcia Gibson*
Bob and Debbie Gilbert*
David Giles and Ellen Katz*
Bill and Pat Gillula*
Dr. and Mrs. Robert F. Gleffe*
Rena and Michael Gordon
Maria Gotsch*
Mrs. Nancy Gottschalk

Mr. and Mrs. Larry L. Graves
Don and Ann Gregory*
Molly Grogan*
Tom Gross
Lori Grossnickle
Karen Rubner Grotberg*
Michael Grover and Nunzio Lupo*
Bruce and Cynthia Hagen*
Mike Wooldridge & Charyn Hain
Mr. and Mrs. Paul Harkness
Molly M. Harrison*
Mr. and Mrs. Keith Hartwell
Amelia and Matthew Hayden*
Timothy Hefferon and Leeann Konrad*
Mary Helmick*
David and Betsy Hendricks*
John and Christy Hennessey*
Stephen and Summer Hennessey
Mr. and Mrs. Jeff Hennig
Janet Hethorn
Mr. and Mrs. Thomas Hiatt*
Craig and Lindsay Hine
John T. and Shirley Hoagland*
James and Diana Huckle*
William Hudson
Mrs. Ann Huffman*
Jack D. Hunter*
Ken & Ilene Imboden
Kevin Imboden
Reeve & Sadie Ingle*
Roberta and Mike Jacobson*
Todd and Amanda Johnson
Mr. Thomas C. Jones*
June 8th Foundation, Inc.
Jeff and Cindy Kane*
Todd and Jean Kennell*
Robert and Eve Kerr*
Sandra Kilinski and Larry Ganz*
Alan Kirby & Theresa Pleasants
Steven and Shira Klein*
William Kleinert & Leslie Johnson*
Thomas and Mary Ann Knowles*
Susan Konop
Dan and Michelle Koop
Jeffrey and Jane Krysinski
Mr. and Mrs. John A. Laitala*
Mr. and Mrs. Douglas G. Lake*
Thomas and Bridget Lamont*
Langdon-Nichols Family Trust
Harold and Pam Lassers

Sean Cronin and Dale Sisson
Lersch*
Joe and Kim Leugers*
Bud and Nancy Liebler*
David and Dana Lindquist*
Bill and Debbie Lipner
Jim and Monica Logan*
Bill and Karen Lott
Mr. and Mrs. William Loveless, II*
David and Louise Lutton*
Mike and Lori Lyman*
Mark and Lynne Lyons*
Pamela Lysaght*
John and Barbara MacDougall
Mr. and Mrs. Millard H. Mack*
Anne H. Magoun*
James F. Maher & Emily Barton-



Maher
K. James Yager and Margaret Maier
David Walker and Maribeth Malecki
Augie, Kim & Kaia Manrique*
John and Maude March
Judy L. Mardigian
Luigi and Carlotta Maresca
Larry Mawby and Lois Bahle*
Eric Maxwell*
Mr. and Mrs. Ben D. McCallister, Jr.
Mr. and Mrs. John V. N. McClure
Dr. and Mrs. William J. McCool*
Carl and Virginia McCoy*
Mr. and Mrs. Clyde E. McKenzie*
Mr. and Mrs. Glenn M. McNett*
Kelly McNett
Steve and Kathy McShane*

Mr. and Mrs. Donald Mead*
Barry and Gale Merrill
Dr. and Mrs. David W. Miller*
Mr. and Mrs. Frederick Miller*
Mr. and Mrs. G. Robert Miller
Bob and Marcia Moglia*
Patrick Monaghan and Julia Adams
David L. Monstrey & Katherine Heil*
Jim and Jeanne Montie*
Steve and Kathleen Morency*
Jamie and Paris Morse*
Cyril Moscow and Randie Levin
Mimi Mullin*
Annette and Eric Munson*
Lisa and Ted Neild
Tom Nelson and Stephanie Berger*
Coco and Roger Newton*

David Noling and Victoria Bailey*
Catherine and Robert Noonan
Frank Noverr, Noverr Enterprises LLC*
Noverr Publishing, Inc.*
Connie Olson*
Oryana Food Cooperative, Inc.
Jeannine Ouellette*
Timothy and Kristin Page*
Dr. and Mrs. Jeffrey Pearson*
Jerry R. Pearson
Geoffrey Peckham and Patricia Melzer*
Mary V. Petterson & William Rzyzi*
Mary and Ben Phillips
The Piskor Family
Mr. and Mrs. Paul Polman

Mrs. Bobbie S. Poor*
Thad and Nancy Popa*
Thomas S. Porter
Mrs. Kate Potvin*
Jim and Marie Preston*
John Preston
Linda & Max Proffitt*
Bill and Susannah Quigley
Royce Ragland and Kenneth Bloem
Mimi and Barry Ransick
Polly Rea*
David & Jean Redfield*
Mat and Nancy Reeves
Alexis M. Reid*
Doug and Beth Reid*
David Reinisch and Julie Kiefer*
Brenda Rixey
George & Hilda Roach
Jon and Julianne Robinson
Kati Rooney & Jim Hennessey*
Mr. Roger Rosentreter
Kay and Pete Rossiter*
Mr. and Mrs. Richard A. Rossman*
Dr. and Mrs. Edward J. Rutkowski
Dr. and Mrs. Todd H. Ryan*
Donald & Stephanie Sanderson
Sarah Allyn Bahlman, President The Ridgeway Foundation
Jim and Bonnie Scarlett*
Mr. and Mrs. John J. Schaffer
George and Deborah Schankler*
Joan H. Searby*
Patricia Sharpnack*
Daniel C. Shoup & Anne Bishop Shoup*
Charles Silver*
Paul Skiem and Beth Brooks*
Sleeping Bear Dunes Visitors Bureau
Mr. and Mrs. John P. Snedeker*
Dr. and Mrs. Peter Sneed
Daniel Snyder and Ann Rich
Kris Solomonson
Mrs. Greta Solomonson
Jeffrey and Jenny Spaeth
John and Leslie Spraggins*
Joanne L. Sprouse*
Mr. and Mrs. Justin A. Stanley, Jr.*
Chris and Jamie Stephenson*
Stifel
Sam and Martha Stott*

Joan Strassmann
Stricof Family Foundation
Andrea Struble
Janice Suhajda
Mrs. Candace K. Sutfin*
Mrs. Laura L. Swire*
David Tabolt & Lisa Genesen*
Michael and Terry Tarnow*
Amy and Brian Tennis*
The Jerry and Marcia Tubergen Foundation
Tom Russell Charitable Foundation
Bert & Diane Thomas*
Tom's Food Market
D'Vera G. Topol
Mr. and Mrs. Jerry L. Tubergen*
Warren and Julie Veltman
Beth Verhey and Daniel Toole*
Karen R. Viskochil*
Lynda and Bill Waldeck*
Patricia Walsh
Julie and Galen Walter*
Andy and Elizabeth Walters
Curt & Kristy Ward
WaterStone
Sheen and David Watkins*
Mark and Lisa Weadick
Marcia Webb*
David Weisbach and Joan Neal*
Mrs. Elise I. Weisbach*
Tim Werner and Petra von Kulajta*
Jacquelyn Westbay
Mr. and Mrs. Peter F. Westerman
Jim and Kathy Westlake*
Mr. and Mrs. Thomas R. Whitney
Fred Wiese*
Brian Williams & L. Fisher-Williams*
Wislow Research Associates LLC*
Jack and Carol Wixted*
Mrs. Pauline Womac*
Douglas and Jennifer Wyatt
Mr. and Mrs. John J. Zevalkink
Mr. and Mrs. John Zubik*
Anonymous (4)

\$500-\$999

Barbara Abbott*
Anne F. Adams
Barry and Lynn Adler
Anne Aiello
Jim and Jan Albers

2022 Donors Continued

* indicates Sustainers Circle Member

Mr. and Mrs. Mark C. Allen
David and Jacqueline Amos*
Mr. and Mrs. Gary E. Anderson*
William C. and Vicki Anderson*
Sally S. Appel*
Mr. and Mrs. Dennis A. Armbruster*
Jeremiah and Kristi Avery*
Jane T. Babbitt
Irene G. and J. Sumner Bagby*
Jane Baker*
Andrew Bamford and Tamera Wales*
Glenn and Patty Barnes*
Mr. and Mrs. Patrick J. Barry, Jr.*
James Beaubien & Susan Welsh
Paul and Mary Lynn Belden
Nancy and Joe Belton*
Carol Benner
Mr. and Mrs. John Bennett
Jill Berkeley & Larry Goldman*
Mr. and Mrs. P. James Bernardo*
Drs. Lindsay and Mark Bibler*
Barbara Bierlein & Tom Dillon
Mr. and Mrs. John B. Biggs, Jr.*
James G. and Ann H. Bingham
Patrick Birney
Dr. and Mrs. Dale M. Blount*
Dr. and Mrs. Harry M. Blount*
Margaret Bogart & Robert Bogart, Jr.
Gilbert A. Bogley*
Susan Bomier*
Andrew and Yolanda Bone*
Kathryn E. Bosco*
Jack A. Bosgraaf
Carol and Lee A. Bowen*
Barbara Boyer
Mr. and Mrs. Christopher E. Branson*
Alexander & Olivia Brolick*
Robert & Julie Brooks*
Alexander & Jesica Brown*
Bryan and Eaton Brown*
Rev. Philip and Alice Bruening

Brig and Merrill Buettner*
Nancy Bujold*
Peter and Maria Garcia Bulkley*
Amanda Burke
Jeff and Debbie Burt*
Denise and Stu Butterfield
Mr. and Mrs. David Camiener
Kris and Howard Cann*
Drs. Nancy Cantor & Steven R. Brechin*
Kip and Sherry Cantrick*
Michael & Janette Carpenter*
Mr. and Mrs. Jack L. Carpenter*
Thomas and Denise Frieder Carr*
Cathryn Carter and Cindy Winiarski*
Mr. and Mrs. Thomas D. Cassady
Michael and Kavitha Celentino
John Chapman and Candance Daley*
Karen L. Chase & David Bellizi*
Vijay and Ann Chitkara*
Dr. Mary Ciotti
Mrs. Betty C. Clarke*
Dean Manikas & Susan Cocciarelli*
Drs. Priscilla Cogan & CW Duncan
Jeanne Cole and Jonathan Ledsky*
Dennis R. Colling
Mr. and Mrs. William T. Collins, Jr.*
Grant Cone and Tracey Paddock
Michael and Michelle Connell*
Kara Cook and Michael Beno
Mr. and Mrs. James Cooper
Dr. and Mrs. Vincent Couden
Mrs. Carolyn L. Crane
John and Kitty Cranor
Ron and Peggy Creten
Dean and Lori Crutchfield*
Laurentiu & Diana Cucos*
Lori and Gordon Dabney*
Mr. and Mrs. Daniel W. Darland*
Henry Darlington
Bill and Margie Darooge
Drs. Paul Dechow & Joanne Blum*

Annette Deibel*
Meg and Rich Delor*
Dennis and Ambrosia Dennehy*
Mr. and Mrs. Ross Deye*
Adele and Page Dinsmore*
Mr. and Mrs. Jeffrey E. Dixon*
Erin Dorsey
Nancy Doughty
Mrs. Karen Douma*
Hank Dow
Roland Drayson*
William Drozdalski & Linda Janman*
Harriet Dunlop*
Holly and Jeff Dunlop
Bruce and Lynn Dunn*



Jack & Leah Dunn*
Mr. and Mrs. C.R. Dunn
Sherry D. Edwards*
Gayle E. Egeler*
Aaron and Jennifer Ellenbogen*
J. Richard Emens & Beatrice E. Wolper*
Mrs. Mary Emmett*
William and Martha Encherman
John and Linda Engelhard
Gail and Keith Evans
Robert and Barbara Featherly*
Dr. and Mrs. Robert E. Fellows*
Douglas Felt
Erika and Dennis C. Ferguson*
James Fielding*
Financial Avengers Inc.
Mr. and Mrs. Harry J. Finke, IV

The Finnegan Family*
Mark and Betsy Fisher*
Mr. and Mrs. James A. Fisher*
John and E.J. Fitzpatrick*
Mr. and Mrs. Michael Fleishman*
Russell and Layne Flick*
Robert and Gloria Floden*
Lee and Jill Foerster
Matt and Courtney M. Font*
Dr. and Mrs. Richard K. Foster*
Drs. Robert Foster & Valarie Miner*
Mr. and Mrs. Thomas H. Fox*
Judy L. Frederick*
Donald Frerichs*
James and Kathy Ganley*
Candy Gardner*

Judith E. Gass*
William and Bertha Gebo*
Jeffrey and Georgia Gietzen*
Robert H. Giles*
Meredith and William Goodrick
Mr. and Mrs. William B. Goodspeed
Google
Dr. and Mrs. David Gordon*
Diane Grauer
Mr. and Mrs. David Grauer
Tresa Grauer
Jerry Gretzinger & Meg Staley*
Mr. and Mrs. Thomas N. Griffith
Jim and Mary Jo Grogan*
Rod Groleau
Ray and Lynn Gross
Dick Grout*
Bob and Jane Grover

Thomas Guback
William & Debbie Guthrie*
Robert L. Hagerman*
Rick Halbert*
Mollie and Chuck Hall*
Mr. and Mrs. Jeff Hamilton*
Jeff and Ilze Hammersley*
Dr. and Mrs. Timothy B. Hanley*
Mr. and Mrs. Bradley T. Hanpeter*
Mr. and Mrs. Edward C. Hanpeter*
Edward Hargis
Mr. and Mrs. Alan E. Hartwick*
Harvey's Foundation
Judith Case & Karl Hausler*
Bev and Dan Heinz
Paul and Meredith Henley*
Mark and Beth Henry*
Mr. John Herbst
Mr. and Mrs. David Herr*
Gail and Bob Hetler*
Judy Hill*
Mrs. Nancy Hollowell*
Kent & Becky Holton*
Mr. John H. Hoppin, Jr.*
Philip & Karen Howells*
Thomas Hunt
Steven and Janet Hyde
John & Judy Ichord
Inland Seas Education Association
Catherine E. Irwin*
Mark and Elaine Michener Israel*
T. Michael and Joan Jackson*
Janet Jacobs
Bob Jacobson*
John & Kathy Jahoda*
Mary E. Jellema
David Carroll Johnson*
Tobin & Casey Johnson*
Mr. and Mrs. Bradley J. Johnson
Chad and Heather Jordan*
James E. Joyce
Geoff and Deborah Kammerer
Emily & Brandon Kanitz
Mr. and Mrs. Jim Kartsimas
Alan and Teri Kasper*
Mr. and Mrs. Mike Keen*
Mrs. Janet H. Kelley*
James and Linda Kemper*
Lawrence Kennedy*
Ms. Susan Kettering*
Nadeen Kieren and Thom Greene

Ann Kincaid*
Carol Kindt
Mrs. Susan D. King
Mr. Charles Knapp*
Mr. and Mrs. Thomas Knighton*
Pete & Melanie Knuppel*
Diane & Paul Kolak
Mr. and Mrs. Daniel G. Korson
Kevin Kowalk & Rachel Warner*
James and Luanne Krantz
Mrs. Pat Krause*
Don and Jeanne Kunz*
Robert Kurtz and Molly O'Toole
Mr. and Mrs. Bradley E. Laffrey
Denise and David Lamp*
Charmain and Steve Later
William and Barbara Lawton
Karen Ledsky*
Linda LeMieux*
Mr. and Mrs. William J. Leugers, Jr.*
Mrs. Nancy H. Liley*
Lime Lake Association
Mr. and Mrs. John Ling*
Laurie and Dan Lisuk
Mike Litch*
David P. Lloyd
Frank and Conchita Lockhart*
Jim and Claudia Lockhart*
Ruth Lovingood*
Drs. Scott and Mary Beth K. Lowe*
David Lubanski & Dr. Carrie Dul*
Dr. R. William and Jeri Lustig*
Jeffrey & Elaine Luther
Dr. and Mrs. James Lutz*
Robert and Lisa MacKay
Bill McCrory & Leslie Maclin*
Theresa Maday*
Gail Mahan
Themistocles L. Majoros*
David & Dannielle Maki*
Steve and Halley Markovich*
Mrs. Barbara Marsh*
Mr. Leonard P. Marszalek*
Mr. and Mrs. John G. Martin*
Mr. and Mrs. Robert T. Martin*
Tim and Anita McCabe
Kate and Halley McDonald*
Mr. and Mrs. Randall McElrath
Steve McGraw and Bobi Morey*
Mr. and Mrs. Doug McInnis*
Mr. and Mrs. Stafford McKay*

Mrs. Margaret B. McKinley*
Allan and Mary McKisson
Jeff and Erin McRae*
Mr. and Mrs. Franklin B. Mead*
Dr. Lisa Meils*
Gary and Wendy Merkey
Justin & Bethany Messer*
Leah Michalson
Vince and Jamie Mileto
Craig A. and Nancy T. Miller*
David and Catherine Miller*
Gary & Vickie Miller
Mr. and Mrs. Richard Miller
Rick and Anne Miller
David Mindell
Gretchen & Tim Mizerowski
Julie & Jeff Moore*
Helen Morgan
Andrew Morrill and Marie Knoerl
Mr. and Mrs. Andrew B. Morrow
Robert R. Morse, Jr.*
Michael and Theresa Morton*
Mr. and Mrs. Michael Muladore*
Karen Mulvahill & Dan Malski*
Ann and Don Munro*
Nick and Kim Murray*
Gregory and Rhonda Myers*
Mark Nesbitt & Sara McVay*
Dr. and Mrs. Thomas Newland
Cristine & Robert Nichols
Gregory & Kathryn Nichols
Leonard Niehoff and Lisa Rudgers*
Jeffery and Susan Nielson*
John and Leslie Nilsson*
John Nitschke & Jean McLaren*
Mr. and Mrs. Thomas Nixon
Mr. and Mrs. John Noell
Allen and Ellen Northcutt*
Jim Nugent and Toddy Rieger*
Kiku Obata
Edward & Caroline G. Oberndorf*
Mr. and Mrs. Thomas Oetinger*
Greg Oleszczuk & Jeanine Taghon-Oleszczuk
Olson, Bzdko & Howard, PC*
Mike and Sue O'Riordan*
Stephen and Ami Orr
Dr. and Mrs. Mark Orringer*
Michael Ouzounian and Trish Rogers*

Ron Paczkowski & Judy Talbott*
Laura Gits Paine*
Mr. and Mrs. Jerry P. Palmer*
Stephen and Elizabeth Palms*
L. Harlan Peck
Kyle and Ashley Peczynski*
Ellen Pisor*
David and Ann Podeszwa*
Tim & Margaret Price
Dr. David and Deborah Pruis
Pat and Dan Pruis
Jack and Janice Purse*
Gary & Sue Pyles, Bob & Nora Bernhardt
Catherine & Vance Querio*
Lori Holstege and David Quimby*



Margaret M. Raben
Mr. and Mrs. Eric R. Ray*
Hannah Reimer Christopher
Dr. Raymond E. Reinert*
Peachy and John Rentenbach*
Keith and Marci Rhodes*
Shawn Ricker and Steven Cacossa*
Mr. and Mrs. Richard O. Ristine, Jr.*
Mr. and Mrs. Eppa Rixey
Mary Robertson
Carl Robinson and Karen Fujisawa*
Michael Rodenberg
Mr. and Mrs. Scot C. Roemer*
Bill and Kate Rohlfs*
Mr. Thomas M. Rooks*
Lisa Root Moore
Michael and Vicki Ross*
Tim and Janet Ryan*

Seth Sadis and Kristen Verhey
Salon De Lara LLC
Perry and Deborah Samson*
Matt and Sara Satkowiak*
Mr. and Mrs. Ross G. Satterwhite*
Paul Sauerland & Teri Cone
Mrs. Mary Elder Schaff
Phil and Kathy Scherer*
Mr. and Mrs. Robert Schlueter*
Todd and Sheila Schorer*
Gary Schultheiss & Barbara Richman*
Mrs. Virginia Schultz*
Ann and Don Schwartz
Jack and Susan Seaman*
Jim and Cathy Searing*

Robert Seeman and Karin Jacobson*
Mrs. Rosalind B. Sell*
John and Susan Sentell
Anne and David Shane*
Mary and Bob Shapton*
Carrie A. Sharp*
Mr. and Mrs. John A. Shilts
Robert and Linda Shirley*
John Shoaff & Julie Donnell*
Mike & Teena Shupert*
Barbara and Frank Siepker*
Reid Sikes & Barbara Macke
Matt and Mona Simoncini*
Jim Simons and Shirlee Affhalter*
Tom Skinner*
Paul and Margaret Sloan*
Andy and Marietta Smith*

Clay Smith & Leslie Black
Eric Smith & Elasa Schaff Smith
Janet and Mark Smith
Rick and Marlee Snowdon*
Dr. David E. Spathelf*
Lance and Ania Spitzner*
Chris Stack, Jr.*
Bill and Mary Butler*
Darlene Stanley & Harry Zoccoli*
Mike and Marie Stearns
Robert Steinhilber & Mary Jo O'Connor*
Harriet Stephens
Mrs. Eleanor B. Stephenson
Terry and Debbie Stiemann*
Chuck Stockwell*

Don and Tricia Stogsdill*
Dr. and Mrs. Daniel Stricof*
Mr. and Mrs. W. Richard Summerwill*
Sarah Swift*
Lee Taft
Cynthia and Bruce Taggart
Tandem Ciders
Abbot and Josie Thayer*
Kathy Thomas
Richard and Sera Thompson*
Three Tree Tent, David Leith and Caren Field*
Jesse & Hilary Tien
Jim & Susan Tish*
Mike Toal*
Dan and Sue Tobin*
Dan & Stephanie Tresemer*

Kathy M. Tuckerman*
Dennis and Kathy Turner*
Drs. Vinson and Rebecca Ulep
Tom Ulrich & Lindy Kellogg*
Mr. and Mrs. Timothy J. Unger*
Mr. and Mrs. Bill Valpey*
Mr. Joseph M. Varley*
Mrs. Anne M. Vaughan*
Kate Vilter*
Phil and Barb Von Voigtlander*
Karen Wachs and Joe Farrell*
Wapakoneta Foundation
Tom and Jenna Warburton
Noreen and Stewart Warren
Andrew and Molly Watkins*
Doug and Jackie Watson*
John Weber*
Barclay & Kristen Welch
Mr. and Mrs. George R. Wellman*
Toni Westphal*
Mike and Lisa Whaley
Mr. and Mrs. Tom Wille*
Mr. and Mrs. George R. Wills*
Ms. Jane Wilsher*
Robert T. Wilson & Sandra Smith*
Terry and Sandy Wilson*
Mr. and Mrs. Mark H. Windemuller
Barbara and Eric Winkelman*
Nancy and Stuart Winston*
Mr. and Mrs. John Withee*
Susan Witt*
Peter C. Wolcott*
Mr. and Mrs. Dave Wollenhaupt*
Caroline and Edwin Woods*
Mr. and Mrs. John Woomer
Wayne and Sharon Workman*
Lee and Jenny Workum
Margie Yaker
Bruce Young*
Marilyn and Gregg Zank*
Catherine Zimmerman
M. Richard Zinman*
Mr. and Mrs. Michael Zipser, Attny/CPA*
Birgit Zipser Jorgensen
Bill Zolkowski and Susan Hawley*
Anonymous (4)

2022 In-Kind Donors

Arbor Brewing Company
Baia Wine
Bay Area Recycling for Charities
Bayview Weddings at Gallagher Farms
Bel Lago/French Valley Vineyards
Katherine M. Bowman
Timothy & Lynnette Fouch Bugenske
Mr. and Mrs. Keith W. Burnham
Cherry Republic
Mr. and Mrs. E. Neal Cory, II
Event Theory
Carolyn Faught - Omena Cut Flowers.
Erika and Dennis C. Ferguson
G.J.'s Rentals
Steve Galbreath
Rick & Silvia Gans
Gene and Kathy Garthe
Paul and Ruth Geil
Steve Gilbreath
Grand Traverse Surveying & Mapping
Mr. John N. Hadjisky
Richard and Patricia Hager
Jack Pine Band
Kasson Sand and Gravel
Dr. and Mrs. Tim Keilty
Mr. Paul Kieren
Laketon Orchards
M22 LLC
Steven & Deborah Martineau
Mr. and Mrs. Stephen D. McGraw
Mr. and Mrs. Doug McInnis
Modal, LLC
Mimi Mullin
Nature, A Michigan Retreat
Northwoods Hardware
Eric O'Daly, Max Lockwood, and Brandon Worder Smith
Dr. and Mrs. Daniel Palmer, MD
Erin Palmer
Tom Potter
Kama Ross
Michael E. Scharpf
Mrs. Patricia D. Shea
John and Leslee Spraggins
Sugar2Salt
Tandem Ciders
The Homestead
Tonic and Lime Boutique Bartending
Verterra Winery
Larry Webb
Joan and Randy Woods

2022 Donors Continued

* indicates Sustainers Circle Member

\$250-\$499

Geoff Abbate and Marty Eisenbarth
Mr. and Mrs. Weston W. Adams, Jr.
Mr. and Mrs. Robert D. Aicher
Mr. and Mrs. Dave Albert
Alfie Logo Gear
AmazonSmile Foundation
Paul and Melisse Anderson
Mrs. Janet Andress*
Adam and Mary Arents
James and Rose Arnold
Arnold & Porter Kaye Scholer LLP
Azimuth Capital Management
Maude Babington & Heidi Weckwert
Paul and Brenda Balas
Sarah Carolyn Baldwin
Mrs. Lena A. Ball
Bardenhagen Berries - Steve and Pam Bardenhagen
Kay and Chuck Barnell
Mr. and Mrs. Robert Barss
Jean Bassett
Rob and Shelly Batterbee
Drs. Art & Elizabeth Beaudoin
Ron and Jane Becker
Mr. Kenneth Benjamin
Kathleen Benner
Jamie and Carolyn Doepke
Bennett
Lawrence & Nancy Bluth
Gina and Ron Boe
Robert S. & Thelma C. Boles
Mr. and Mrs. Philip Boria
Mr. John Bourbonnais
Mrs. Judy Bracken
James Bransky & Robin Webb-Bransky
Daniel Brower
Karla and Scott Brown
Drs. Kersti and Daniel J. Bruining
Brendon & Alicia Buckley
Rick and Tammi Budinger
Nik & Theresa Burkhart

Steven and Barbara Bursian
Dr. and Mrs. Paul D. Burstein
Kaila Bylsma
Michael and Norma Campo
Joseph Capuano and Mary Skiver
Mr. and Mrs. H. James Carleton
Mr. and Mrs. David Carroll
Mr. Chas Catherman
Jeff Cavanaugh
Patricia Centner
Jim and Linda Chalat*
J. Preston and Nina Cory Claytor
Mary Beth Coburn
Michael and Margaret Collins
Peter Cooke
Cottonseed
William and Patricia Crean
George and Maryellen Daston
Mr. and Mrs. John G. Davey
Mark Davis and Mary Kranstover
T. Jeff Davis & Ken Smith
Arlene and Bob Dean
Mr. and Mrs. Carl M. DeFaria
Gregory and Lucile Demanski
Mrs. Michelle Denny
Kathleen Dolson and Christopher Spilling
Jennifer and Bill Doyle
Paula and Bryce Dreeszen
Stephanie and Mark Duckmann
Drs. Michael and Carrie Dunn
John Dunn
Mr. and Mrs. James E. Dutmers, Jr.
Easling Construction Company
James and Jill Egan
Mrs. Judith M. Egeler
Eric and Marcy Elliott
Dr. Claire Ernst & Al Bedecarre
Mr. and Mrs. Daniel Ezekiel
Brian Farmer
Jeannie Farren
Larry and Nancy R. Faulman
David and. Kathleen Fischhoff
Mr. and Mrs. Jud Fisher
Ken and Kris Fishman
Nancy Fleming*
Kenneth Floody & Elizabeth

Freebairn
Sarah and Tim Fogarty
Robert and Mary Foster
Doug and Julie Frazier
Dick & Judy Freeman
Al and Karen Gallup
Mr. and Mrs. David T. Gardner
Ben Gerould
Sandra Gianturco & William Bradley*
Mr. and Mrs. John E. Gideon
John Gierak and Dona Tracey
Donald Gilligan & Gina Maniscalco
Tom & Nancy Gilman
Richard and Marianne Glosenger
Steven and Shelley Goldstein
Richard Goshorn and Lori Kidder
Grand Traverse Area Catholic Schools
Allan and Sydel Grant
Chad and Jennifer Greenwell
Mrs. Linda Gregory
Mr. and Mrs. Mike Groleau
Mr. Gerald Gruska
Alan & Brigid Guttmacher
Mr. and Mrs. Christopher Haber
Jonathan Hague & Suzanne Hudnut
Scott and Krisy Hammond
David & Quinn Hampton
Jane Hardy
Terry & Nancy Harris
Gordy and Jeanne Hatt
James & Bayanne Hauhart
Mr. and Mrs. R. Tucker Hawkins
Gabriella Heekin Sullivan
Mr. Mark Helfers
John Hoerr & Allison Zimpfer-Hoerr*
Michael Hondorp
Andrew and Catherine Horning
Alison Horton
Mrs. Georgina Hosmer
Christopher and Elizabeth Hughes
Larry and Nancy R. Faulman
David and. Kathleen Fischhoff
Mr. and Mrs. Jud Fisher
Ken and Kris Fishman
Nancy Fleming*
Kenneth Floody & Elizabeth

Steve and Maggie Jackson
Susan Janecke
Jay and Betsy Johnson
Mrs. Marilyn D. Johnston
Brian & Jennifer Jones
Ms. Louise Coleman Jones
Mike and Sarah Julien
Joe and Beth Junewick
Angela & Joe Karbowski
Karen and Charlie Kaufman
Liz Ketterer and Tom Balazs*
Lynn B. Key
David and Jennifer Kirchgessner
Christopher Knowles & Marcia McAllister
Mr. and Mrs. Douglas Kohlbeck
Marc & Colleen Kole
Melanie Koskamp and Maria Zierk
Mr. and Mrs. Bryane E. Kowalewski
Stephen E Kozelko & Pam Leonard
Margaret Kryda
Stan and Joy Kryder
Jan and Paul Labbe
Thomas & Mary Labus
Greg and Pam Landa
Mr. and Mrs. Jon M. Lane
Mr. and Mrs. Harry Larkin*
John & Cathy Leahy
Leelanau LLC Siladke
Mrs. Carol LeGray
Mrs. Deloris Leppink
Anne Leugers and Elmer Lipp
Mark and Lori Leugers and Family
Matt and Maureen Leugers
Connie Leutloff
Barry Levine & Beverly Beauchamp
Ruth A. Lezotte
John & Wendy Lichtenwalter
Mr. and Mrs. Ed Lindeman
Drew and Hilary Lipner
Neal Little and Eva Feldman
Gus and Katie Lo
Carla and Dennis Logan
John Lombardi
Carlos and Susan L. Lowell
Hans-Peter Lowry McDonald & Marie Girardot

Don and Doni Lystra
Dan and Lynne Mapes-Riordan*
Jean Martin
Houston and Lauren Martin-Vally
John and Janet Mattson
John and Nannie Maxwell
Mr. and Mrs. Gary McCausland
Scott McDonald
Jill and Mike McDonnell
Susan B. McHugh
Kristi McKenzie and Frank Sellgren
Mr. and Mrs. John McLoughlin
Alan McTaggart
The Melvoin Family
David Mertz and April Stuck
Mr. Douglas B. Mesecar
Lou & Jenny Miller
Mr. and Mrs. Peter Miller
Mr. and Mrs. Reed Miller
Mr. and Mrs. R. John Miner
Donald and Patricia Molten
Emily Monoyios
Casey and Marissa Moore
Dennis and Linda Moroz
John and Kacia Morris
Andrea Mosbaugh
Alexander Newton
Dr. and Mrs. Richard L. Nielsen
Jane and Jason Nuzzo
Elizabeth Och
Rich and Adrienne Odell
Dale and Sue O'Donnell
Kelly and Jeff Orringer
William Oshinski
Mr. and Mrs. Steven A. Owsley
Mr. and Mrs. Woodruff Palmer
Katherine Palms
Susan Pandorf
Mr. Wes Parker
Mr. and Mrs. Jeffrey S. Perlman
Mr. Randy Petresh*
Brandy Phillips
Guy Plamondon & Anneke Wegman
Mr. and Mrs. David M. Pohlod
Brian Farmer & Abigail Pohlonski
Patricia Pollock and Mark Rodak
Cindy and Ovide Pomerleau
April Powell
David and Laura Powers

John & Kristin Prebay
Larry and Carolyn Rawsthorne
Jennifer Reid
Laurie G. Remter
Jim Richardson
Ms. Patricia Richardson
Julie Ridenour
Mrs. Louisa Ridgway
Carol E. Rigg
Leonard and Karen Rinke
Jerry and Rebecca Risser
Ron and Patti Robinson
Mrs. Marcia L. Rose
Mary Cobb and Peter Rouseelot
James Royce
Michael Rudd
Laurie Ruth
Mr. David W. Salisbury
Vincent Saul
Mr. and Mrs. Charles B. Schaff, Jr.
Heather & Kevin Scheetz
Mark and Susanne Schneider
Mr. and Mrs. Edward D. Schocker
Thomas and Suzanne Schoeneberger
Steve & Karla Scott
Lisa Sebright
Henry Crevensten & Carlin Senter
Mr. and Mrs. Edward D. Schocker
Jack Seymour and Margaret Ann Crain
Karen and Chuck Sharkey
Elise Shatto
Patricia Shiley
Mr. and Mrs. Jeff Shutz
Mr. and Mrs. Robert Smart, Jr.
Mr. and Mrs. John B. Snyder, Jr.
Caroline Spencer
Quinton and Margaret St. John
Laurie Starr
William H. Stephenson
David and Laurie Stevens
Meagan Stockemer
Mark Stoddard
Todd and Janet Stone
Gerald & Jamie Sutton
Suzanne and Richard Swan
Mary Taylor
Don & Gaye Terwillegar
The GE Foundation
April Powell
David and Laura Powers

The W.W. Group, Inc.
James Thoburn
Paul Thompson
Ms. Kate Thornhill
Mr. and Mrs. Steve A. Torok
Shannon and Chris Torres
Daniel Toth and Janice Derian
Erin Trame and Carrie Turner
Jason and Emily Traycoff
Carol and Ruben Trono
Mr. and Mrs. Dan Tubbs
Mr. and Mrs. Gary B. Twomey
Chris and Sarah VanDeven
Matt & Nova Vulcanich
John and Carrie Wadas
John and Gina Walsh
Dr. Lawrence H. and Jamie Warbasse, III
Tim and Betsy Warner
Mr. and Mrs. William J. Warren
Tamara L. Weber
Mr. and Mrs. Edward Weller
Stephen and Kathleen Weller
Mr. Max Wendell
Stuart and Suzanne White
Mr. and Mrs. Douglas Whitley
Calvin Wiersma
Joe & Michelle Will
Debra Willbrandt
Norman and Susan Woerle
Julia Wolcott
Jane Woodward
David D. Wright & Julie Quinn
James Wright
Dr. Stephen A. Wyatt
Jeanne Dolson and Michael Yocum
Lise C. Zahn
The Zak Family
Mr. and Mrs. John C. Zink
Dana Zink
Barb Zupin and Tom Gardner
Anonymous (2)

\$100-\$249

Ms. Joanie Abbott
Amanda Acker
Mr. and Mrs. David E. Adams
Matthew Alcorn
Robert & Lynn Aleksov
Tom and Nancy Alfieri

Mr. and Mrs. Robert L. Alfien
William and Nancy Allen
Mark and Becky Alonzi
David Alpers
Chris & Becky Anderson
Jonathan & Leslie Anderson
Kathy Anderson
Mr. William H. Anderson
Sallee and Thomas Anderson
Mr. and Mrs. James P. Andres
Marilyn Andrew
Andrew and Susan Appel
Ed Arlin and Deb Greenman
Carlos and Lisa E. Armas
Jessica Arnott
Ed & Francine Attrill
Mr. and Mrs. Jim Aufderhaar
Mr. and Mrs. Louis E. Aug
Anna and John Bachman
Terrance and Sandra Bacon
Mr. and Mrs. Richard L. Bahle
Mr. Stephen Bahlke
David and Kassandra Bahr
Randy Baidas and Will Reeves
Mr. and Mrs. Joel Baillie
Dr. and Mrs. Walter M. Baird
Richard and Dana Balander
Michael & Nanci Baldrige
Carol Baldwin
Rita Ball
Mr. Carl H. Ballou
Angela Bandemehr
Mr. and Mrs. Mike W. Bandy
Mr. and Mrs. William A. Bannasch
Mr. and Mrs. George E. L. Barbee
Margaret Barber
Mr. and Mrs. Gary Bardenhagen
Bruce Barnes and Kathy Marciniak
Mr. and Mrs. Bryan Barus
Eric Bassett
Greg and Chris Bassett
Mr. David S. Battle
Antoinette Bauer
Mr. and Mrs. John E. Beeskow
Mr. John Belanger
Nadia Bellardi
Mrs. Rosemary R. Bennett
Mrs. Gill Bentley
John and Rebecca Bercini
Vicki Berglund & Andy Gould

Mr. and Mrs. Edward Beuerle
Sandra M. Biagini
Jon & Janis Bible
Gary and Wendy Bice
Mike and Mindy Binsfeld
Richard Binstadt
Birchwood Shores Preservation Assoc.
Mr. and Mrs. Lowell O. Bird
Michael & Linda Birtles
Tom and Gwen Bischoff
David Blackmore & Barbara Worland
Mr. and Mrs. Brent Blackwelder
Ryan and Amanda Blanck
Sherry Blazy
Mrs. Peter and Eleanor Blitzer*
Eric and Carol Blum
Judy Bobrow & Jon Desenberg
Ms. Joan C. Bock
Mr. and Mrs. Robert A. Bolak
Sara and Gordon Bolan
Tim Boland & Laura Coit
Robin and David Bolig
Dr. Amy G. Bolmer
Barry & Janet Bolton
Mr. and Mrs. Dale Boone
Graydon Booth & Lauri Sugerman
Garrett (Buddy Boy) Borns
Rick Borns
Alexa Borromeo & Kipchumba Chelilim
Mr. and Mrs. Dave Borton
Peter Bottenhorn
Mr. John Bourgault
Gerry and Kathleen Boylan
Mr. Daniel J. Boynton
Will and Margee Bracken
Mary Brayton
Mr. and Mrs. Robert Brenner
Tim Brick
Howard and Mary Bridges
Michael and Sherri Brom
Mr. and Mrs. Dan Brondyk
Alfred Brothers
Dorothea Brown
Dr. and Mrs. Gregory S. Brown
Mrs. Carolyn R. Brown
Jim and Laura Brown
Mr. and Mrs. Larry Brubaker
Michael and Jeanine Bruening

John and Susan Bryant
John & Kristy Buck
John B. Buckhout Trust
Fredrick Budd and Donna Wilds
Theresa and Gasper Buffa
Timothy & Lynnette Fouch
Bugenske
Calvin Bulthuis
Paul and Tanya J. Bulthuis
Mr. and Mrs. Charles J. Bumb
Rebecca Bunn
Jane E. Burchfield
Phil and Laura Burk
Michael Burnett
Mr. and Mrs. Keith W. Burnham
Mr. and Mrs. John P. Burns
Richard & Mildred Burns
Mrs. Avery L. Burns
Paul Busman
Matthew and Supapan Butler
Pamela Butler
Chuck and Susan Buxton
Eleanor J. Canfield
Michele Cannon
Jackie Cantalupo
James and Elisa Cantwil
Mr. David G. Card
Field and Sandy Carden
Megan Carleton
Brian Carley
Monica and Brian Carman
Margaret Carmody
Gayle L. Carpenter
James C. Carpenter & Rebecca Reynolds
Tammy Carpenter and Scott Hebert
Robert Carr & Lydia Arnold
Scott Carroll
Mr. William Cartmill
Charles Casanova
Barb and John Case
Mrs. Sally Casey
Philip Castillo & Susan Rundle
Andrew Caughey and Shelly Neitzel
Kathy Cavanaugh
Marilyn and Ken Cerny
John and Marsha Chamberlin
Mr. and Mrs. Stephen C. Chambers

Joe and Sybil Chandler
Greg and Barbara Chapman
Cherry Bay Orchards, Inc.
Marc and Jenny Chipault
Mr. and Mrs. Donald Christie
Jennifer Ciccone & Charles Valleau
Mr. and Mrs. Frank C. Clark
Rick and Sally Clements
Eric and Helen Clemetsen
Rebecca Bunn
Carol and David Clifford
Drs. Steven and Molly Cline
John and Donna Clingerman
John & Linda Cloud
Dotti Clune and Jill Henemyer
Ahad and Mary Rose Cobb
Gail & Steven Cobb
Bob and Pattie Coffaro
Mr. and Mrs. Robert Cohen
Jeffrey & Jacqueline Cole
Ronald and Sally Cole-Misch
Mr. and Mrs. John D. Coleman
Holly Coley
Bob and Toni Conley
Mr. William C. Connelly
Kyle & Elizabeth Connolly
Bill and Linda Connor
Mr. and Mrs. Glenn E. Cook
Mr. Robert L. Cook
Karl and Tracy Cooper
Mr. James Cooper
Caley Corsello
Catherine & Phil Corsello
Mr. and Mrs. Daniel B. Cote
Karen & Ryan Cotton
Carol B. Cottrell
Zach & Danielle Coty-Fattal
Mrs. Dorothy J. Coulter
Peggy Cova
Jim and Lynne Cowart
Linda Coyne
Molly and John Crabb
W. Scott Craig & Carol Bawden
Frank and Mary Crane
Ann Crane
Ms. Lynne Crane
Charles and Susan Crawford
Jon & Debbie Creal
Mr. and Mrs. Alexander Cruden
Mr. and Mrs. Roger Cummings

Art Curtis
Jim and Diana Cusser
Stephen Custer & Marianne Nelson
Lauren Cypher
Randy & Deb Dahlquist
Lee and Jennie Dake
Richard and Mary Daly
Mrs. Marti Daniel
Ms. Carolyn Danielson
Mr. and Mrs. Howard Datema
Douglas & Valerie Daugherty
Tim & Laurie Daum
Nancy and Tom Davies
Alan & Michelle Davis
Catherine M Davis
Mr. and Mrs. Thomas H. Davis
Rodger and Debbie Davis
Mr. and Mrs. Joseph P. Day
Ann and Richard De Boer
James Deaton
Kim and Jeff DeBosier
John and Maureen J. Delaney-Lehman
Mr. R. Garret Demarest
Rebecca Deneau
Joyce and Michael Deren
Joan Derengowski
Michelle Detty and Leland Swanson
James Devlin
Virginie Dezan
Mr. and Mrs. Thomas Dickinson
Mr. and Mrs. John F. DiClemente
David Diller and Laurel Voran
Bill and Rita Dillon
Kathy Dinkel
Mr. James Disher
Nancy and Bud Dockter
Kathleen Doherty
Tom and Janet Dohr
David & Cindy Domanchuk
Tim Donaghy and Margy Klesney
Mrs. Maureen T. Doran
Kathleen and Christopher Dorando
Jason and Stephanie Doublestein
Mrs. Janet Dow
Mr. and Mrs. Joe Dressel
Mr. and Mrs. Michael DuBrul

2022 Donors Continued

* indicates Sustainers Circle Member

Tim and Pat Duff
Mr. and Mrs. John Dumala
Steve and Wendy Dumas
Bob and Rae Dumke
Timothy & Delea Dunn
Mr. and Mrs. G. Thomas Dutmers
Barbara A. Duvall
Margaret Dye
Jim and Ann Dykstra
Russell Dzuba and Karen Kirt
Mr. and Mrs. Scott E. Earl
Theo and Caitlin Early
Greg and Reed Ebel
Mr. and Mrs. Richard Eby
Melissa Edwards
Anita Eerdmans
Fred and Nancy Elmore
Alaine Emens and Jackie Fields
Mrs. Carol Y. Emens
Mrs. Lin Emmert
Ronald & Alice Emmert
Elizabeth Erdmann
Tom and Juli Erdmann
Ellen Ernst and Sanford Kossek
Mr. and Mrs. J. Kris Ernst
Ms. Judy Erwin
Mark and Annette Evans
Mr. Albert A. Evans
Mrs. Carol Faber
Mr. and Mrs. Peter W. Fabien
Susan Grogan Faller
Dr. Julie Faller & Robert Schub
Laurence and Catherine Fallon
Alan and Bobbie Falquet
Mr. and Mrs. Hugh A. Farber
Mr. and Mrs. Jack Ferguson
Pete and Julie Finch
Cathleen C. Fisher
Nancy Fitzgerald & Jerry Agnew
Mr. and Mrs. Terence R. Flanagan
Philip Fleming
Tom Flitton & Dani Meinzinger
John and Connie Flynn
Michael & Mary Foley
David Foley & Margaret Willman

Mr. Richard W. Force
Kimberly Ford
Lou Anne Ford
Mrs. Charlotte Fornowski
Jeff and Nancy Forrest
Mrs. Lyde E. Fowler
Jerry & Kathryn Fox
Mr. Chuck Fraenkel
Tim & Caroline Fraker
Laura Franseen and Norman
Kjome
James S. and Judith N. Freeman
Mrs. Nancy P. Freeman
Christiane French
Julie French
Jeffrey & Amy Friend
John & Angie Fryer
David & Kimberley Furbush
Carol Gabel
Michael Gadbaw & Sally Chandler
Cheryl Gain and Brian J.
Fairbrother
Grace Gallagher
Mr. and Mrs. Gary J. Gallup
Mr. and Mrs. Paul D. Gard
Ron and Chris Gardhouse
Stephen Gardner, Jr. & Margot
Nacey
Gregg and Amy Garrett
Mrs. Lynne I. Gauthier
Mr. and Mrs. Jack Gaziano
Paul and Teri Gelter
Kara and Derek Gelven
Mrs. Barbara F. Gentile
George Prayer Group
Jeff and Julie Gerstenberger
Allyson Getlein
Mike and Missy Gettle
Julie Gibbs
Bob & Stephanie Gilbreath
Scott and Erin Giles
Mr. Ed Gill
Rob and Paige Gillespie
Carl and Marsha Giroux
Mrs. Frances M. Gits
Victoria Rea Gits
Mr. and Mrs. Richard J. Goettle, IV
Stuart Gold

Barb and Howard Goldman
Samuel Goldman
Victor and Denice Goldschmidt
Heather and Jeff Goliber
Good Harbor Family Fund
Eric Goodman
Dr. and Mrs. James D. Goodspeed
Chris and Shannon Gordon
Mr. Harvey Gordon
Sarah Gordon and Martin Saad
Mr. and Mrs. Bill Goshorn
Gourdie-Fraser, Inc.
Leonard and Barbara Graf
Mary Graham
Marvin Grahn and Christine
Hauke
Laurie and Joe Grant
Mary Ellen Grant
David & Pamela Gray
Great Lakes Packing Company
Jere and Judy Green
Mr. and Mrs. William Green
Mrs. Patricia J. Green
Mindy Greene
Ms. Paula Greeno
Mrs. Christine Greeno
Rick and Fran Greenup
Cynthia Greig and Family
Elaine Grever
Robert & Sarah Grevey
Mr. and Mrs. Richard Grewe
Ken and Joyce Greywall
Daniel, Carri, Terry & Meredith
Griffin
Rick and Lynn Grodek
Mr. and Mrs. James H. Gross
Mr. and Mrs. John E. Grote
The Gunzenhaeuser Family
Dale Guse
Carol and Rick Hackbarth
Juliet Hafford and Barbara Trippe
Dick and Kathy Haglage
Walter Haglage
Mr. David A. Ham
Sally Hamby
LeAnne Hamilton
Steve Hamilton & Emma Rosi
Georgienne Hammer
Mr. and Mrs. Carl F. Hammond
Mr. Steve Hammond
Linda Hanna

Greg & Melissa Hannah
Mrs. Charlotte G. Hanpeter
Lynn and Doug Hansen
Hansen Foods
Margaret Hardesty
Mr. and Mrs. Dan S. Harkness
Jodi Harrand
Mr. and Mrs. James R. Harrelson
Kirk and Liz Harrington
William Harris and Jamie Moore
Blaine and Jean Harrison
Shane and Jerry Harrison
Mr. Tyler Hartwell
Kelly and Susan Haun
Joe and Ellen Hawkins
Darcy Hawn
Kim Hayes
Michael and Jeanne Haynes
Dennis and Eileen Hays
Mr. and Mrs. C. Robert Heaton
David and Kellie Hebert-Follin
Deborah Hecht and Joseph Falik
Lynn and Diane Hedeman
Mr. Jerry L. Heiman
Jim and Pat Heinzman
Dennis and Lynne Hendricks
Virginia R. C. Hendrickson
James Hengelbrok & Mary
Haberland
Jeffrey & Christine Henning
Jim and Cheryl Henry
Lolita Hernandez
Jan Hewlett
Mr. and Mrs. Steve R. Hext
Skip Hibbard & Nancy Elkind
Hillside Homestead
Shelly and Matt Hils
Timothy and Carol Hinckley
Christopher & Katherine Hinz
Rudy and Mary Jo Hirt
Caroline Hirth
Judith & Richard Hitz
Diane and Thomas Hoban
Lloyd and Christeen Holdwick
D. Mack and S. Hope Holliday
Amanda Holmes and Dan Stewart
Craig and Pat Holmes
Stephen & Christy Holmes
Ken and Carol Holt
Mr. and Mrs. Jay Homan
Mr. and Mrs. Ralph S. Hommel

Rebecca L. Hoog
J. Stephen and Leslee Hooper
Joseph Horowitz
Mr. and Mrs. Michael R. Howard
Mr. and Mrs. Terrence Howe
Sandra Howe
Christine Howlett & Bob Naski
Mitch & Marcia Hubert
Mr. and Mrs. C. Lee Huffaker
Mr. and Mrs. Craig Huffman
Mr. and Mrs. James E. Hullverson
Bill Sawyer and Michele Hulsey
H. Allan Hunt & Rochelle Habeck
Ms. Amy Hutchinson
Dr. Douglas B. Hutchison
Mr. and Mrs. James R. Hutchison
Tom and Kathy Hy
Mary Ihle
Joshua Imboden
Monica Inchaustegui
Carol Inman
Win and Kyle Irwin
Amanda Isaacson
Dr. and Mrs. Paul Izenberg
Kristen Jahoda and Adam Durst
Mr. John T. Jameson, III
Mr. and Mrs. Daniel H. Jamieson, Jr.
Dr. and Mrs. Albert B. Janko
Evelyn Jellema & Douglas Brown
Mark & Jill Jeltema
Paul & April Jendrasiak
Janice Jerome
James and Elaine Johnson
Mr. and Mrs. Daniel W. Johnson
Mr. Robert H. Johnson
Dr. and Mrs. Tom M. Johnson
Matt and Kelly Johnston
J. Kay Johnston & Jeff Sanborn
Larry & Michele Jones
Morgan & Jamie Jones
Kelly and Jason Joseph
Douglas Kabat
Mr. and Mrs. James H. Kabcenell
John & Rebecca Kalthoff
Mr. Jonathan Z. Kamholtz
Alissa Kane
Christopher Kantner & Cynthia
Burger
Mr. and Mrs. Robert F. Karner
Kari Karr

Mr. John H. Katt
Paul and Yoka Kaye
Michael and Mary Kedzierski
Grace Keeble
Phillip Keeling and JoAnn Carlson
Mr. and Mrs. Scott Keller
Dennis Kellermeier & Barbara
Jourdan
Mr. and Mrs. Charles H. Kellogg, Jr.
Barbara Kelly & Ruth Frey
Janet Kelman and David Rein
Christopher & Katharine Kenah
Mrs. Nana Kennedy
Mr. and Mrs. Michael E. Kenney
Alisann and Chuck Kepler
Nancy Keppelman & Michael
Smerza
Blake and Lynda Key
Janet Kiessel
Edward and Dulce Kiessel
Kathy Kim
David Kirby & Martha Topol
Karen Kiser
Eileen Klees
Catherine N. Klein
Bruce and Barbara Knapp
Milton Knight
Nancy Knight
Sandy and Rick Koehler
Mr. and Mrs. Konrad D. Kohl
Mr. and Mrs. Lawrence D. Kohl
Ellen Kohler and Matt Cauchy
Mera and Hallie Kohler
Mrs. Judy Komarek
Diana and Michael Kooistra
Larry and Bonnie Koskela
Leijhi Koval
Holly Kowalske
Mr. and Mrs. Charles Kraus
David and Judith Kurtz
Gary & Susan Kurylo
Mike and Lori Kwolek
Joseph Lada and Gary Cozette
Paul & Pat Ladas
Paul & Linda Lagieski
Ben Laird
Joyce and Larry Lander
Suzanne Landes
Patrick & Cynthia Landry
Dick Lang

Mr. and Mrs. Bruce D. Lang
Joy Lang Anderson
Karel Engstrom and Scott
Lankton
Edward Lanphier
Robert LaPorte & Harriette Lemke
Mr. Geoffrey Larcom
Mr. and Mrs. John A. Laubhan
Mr. and Mrs. Thomas E. Lauer
Al & Dana Laursen
Beth LaValley
Mr. and Mrs. Robert Laven
Kevin Lavrack
Will Lawson
Howard & Debbie Leaman
Dr. and Mrs. Russell A. LeBlanc
Bailey Ledy
Dr. William J. Lee
Kim Lee and Belinda Chou
Lisa Lee
Mr. and Mrs. George Lee
Mr. and Mrs. Ray Leenhouts
Dan and Karen Legault
Mr. and Mrs. David M. Leiser
Jim Lemire & Denise Samuels
Susan Lemmen
Mark Lemperle
Mr. and Mrs. Dan Leppek
Jennifer Leugers
Mr. and Mrs. Paul T. Leugers
Ms. Erin Leugers
Skip and Liz Leupp
Nathan Lewis
Tim Lilleboe
Mr. and Mrs. Lloyd Lindner
James and Susan Lippert
Nick and Kathy Lomako
Joseph and Mary Lordon
Chris and DawnMarie Lorentson
Staton and Carol Lorenz
Mr. and Mrs. Philip Loud
Bradley Luckhaupt
Mr. Joel A. Lutz
Karl Lyon
Diane Lytle
William & Linda Maat
Joseph Machuta
Timothy Macken
Maria & Robert Mackenzie
Mr. Peter Magoun
Mr. and Mrs. E. Thomas Maguire

Marybeth and Barry Mahal
Mr. and Mrs. Peter S. Maher
Tami Maisel & Johannes
Buiteweg
Mark & Mary Majoros
J. Parke and Donna Malcolm
Ray and Penny Malcoun
Peter and Mary Mantei
Richard Mark
Amy Marowitz
Barry and Debbie Marsh
Matt and Cindy Marsh
Mr. and Mrs. Robert D. Marth
Artie & George Martin
Eric & Christiane Martin
Jerry and Martha Martin
Karen and William Martin
Karen C. Martin
Mr. Don Martinez
Andrea Martinez
Tomas Martinez
Mr. and Mrs. Richard J. Mashke
Kate Mason & Mary Lee Miller
Margi Masters
Mark & Haleigh Maurice
Barbara Maxwell
Hal and Lisa May
Mr. and Mrs. Jerry May
Gary and Cheryl Mazurek
Mr. Woody McCally
Mr. and Mrs. Kevin J. McCarty
Mr. and Mrs. Richard McClear
Mrs. Pauline R. McClure
Craig and Lisa McConnell
McCurdy, Wotila & Porteous PC
Dan and Susan McDavid
David and Catherine McDowell
Stuart & Laura McElhinney
Kristen McElligatt
Paul and Susan McEwen
Shannon McFarland
Dorothy McGavran
Fred & Liz McGavran
Jim & Cary McGovern
Mrs. Pauline McIlrath
Ed McInnis
Glenn McIntosh
Harold and Kanda McKee
Mr. and Mrs. Charles D. McKenna
Bill McKinley and Judith Briggs
David McLean & Janet Zanyk

Mr. and Mrs. Gary McLeod
Mr. and Mrs. Bill McMenamy
Mr. and Mrs. S. Craig McMillan
Ms. Rosemary M. McNally
Mrs. Nancy McNamara
Paul and Julie McNeilly
Barbara McNitt
Kate McPolin & Andrew Bartlett
Steve & Kelsey McQuown
Gaytha McVay
Philip and Ann Mease
Donald Meckley
Mr. and Mrs. George N. Meeker
Mila and Warren Meeks
Rob and Anne Meermans
Madalyn Meldrim and Family
Margie Mellen
John W. and Violet M. Melstrom
Katie Melvin
Thomas Mennie
Barbara Meyer
Mrs. Ann P. Meyers
Pat and Laura Michael
Amy Middleton & Therese Durkin
Craig & Lin Milius
Victor Milla & Julia Freiburger
Ann O. Miller
Ayumi Miller
Dr. and Mrs. Keith W. Miller
Mr. and Mrs. William J. Miller
Mrs. Susan Miller
Greg and Suzanne Miller
Mr. and Mrs. Robert G. Milne
Charlie & Sandy Minert
Melissa Minghetti
Steven & Sandra Mitton
Andy Mohr and Maura Fulton
Scott Montgomery
Jenn Rae Moore
Steve and Amelia Moore
Debbie and Jerry Morawski
Corey and Sarah Morgan
Susan Morgan and Pam
Hershberger
Mr. and Mrs. Michael D. Morris
Bryan Morrison
Paul and Wendy Morse
Mrs. Alison Morton
Mr. and Mrs. James M. Moskalik
G. Michel Mott and L. Kim
McManama

Adam & Christine Mouch
Caroline Mug
Mr. and Mrs. Michael F. Mulvaney
Mr. and Mrs. Dennis Murphy
Ken and Pat Musson
Mary Myers
Dennis and Leigh Ann Naas
Brooke A. Nash and David
Kabaker
Mr. and Mrs. Terry Naylor
Mr. and Mrs. John D. Nehil
Ted and Jennie Nelson
Mrs. Maxi Neugebauer
Cathy and Karl Newkirk
Sam and Kimberly Nicholas
Russ & Myriam Nicholson
Laura Nilsson
Denny and Ann Nisch
Kay Noble
Mr. Dale Norconk
Northport Boat Yard
Northport Pottery
Tom & Kim Norton
Cynthia Nowak
Rosann Nunnelly
Gen Obata
Diana and Marc Oberschulte
Patrick and Amy L. O'Brien
Trina Ochs
Pat and Marlene O'Connor
Mrs. Janey Odell
Amy Odgers
Maria and Dave O'Donnell
Charles and Sara Ofenloch
John Ohlrogge
Mr. and Mrs. James Oliver
Mr. and Mrs. Michael Oltersdorf
Robert & Lindsay Olynnger
Omena Women's Club
Dr. Robert and Zibby Oneal
Jane and Pat O'Rourke
Corey and Sarah Morgan
Susan Morgan and Pam
Hershberger
Mr. and Mrs. Michael D. Morris
Bryan Morrison
Paul and Wendy Morse
Mrs. Alison Morton
Mr. and Mrs. James M. Moskalik
G. Michel Mott and L. Kim
McManama

Alexander Parks & Julie Shanks
Mary Anne and Bob Parks
Mr. and Mrs. Timothy A. Parvin
Tony and Renee Patsy
Don and Pat Paulsell
Mr. and Mrs. Thomas Pavelka
Mr. William D. Peace, Jr.
Zoe Pearson
Mr. and Mrs. William F. Peck
Ms. Linda Peppler
Mr. and Mrs. Frank Pestle
Elmer and Ruth Peterman
Dr. and Mrs. Nathaniel A. Peters
Candace Petersen
Mr. and Mrs. John J. Peterson
Richard Zahler and Patricia Petrat
Mr. and Mrs. Frank Petrock
Tom and Christine Pfennig
Christina Pfeufer
Bart & Alison Phillips
Tracy Piasecki
Michael and Wendy Putnam
Pierce
Margaret Pierson
Evan & Erin Pike
Steve and Bonnie Plamondon
Alexis, Bob, Kara and Leah
Platoni
Mary and Lowell Plotkin
Mr. J. Dwight Poffenberger, Jr.
Point Sunny Side Up LLC
Gerald Levine & Sarah
Pokempner
Ron and Marilyn Pokrak
Tim Poor
Glenn and Rasa T. Poorman
Jessica Porter & Matthew
McGuire
Matthew Posner & Marian
Kromkowski
Mr. Joe Povolo
Cyndi & Denny Powers
Constance Powe-Watts & Robert
Watts
Mr. and Mrs. James D. Price
Mr. Larry Price
Christopher Prisby Family
Julia Prisby
Gary Pritchard and Chuck Novak
Diane Pulsone
Mr. Fred Putnam

John and Wanchalee Putnam
Jeff and Jane Puvogel
Bob and Rita Quinn
Dr. Robert A. Raines, Jr.
The Raines Family
Bill Rastetter and Cary Weed
Mrs. Charlotte Read
Renee Read
Mr. and Mrs. Thomas D. Reay
Paul and Phyllis Rebori
Steve and Connie Reddicliffe
Hazel Redman
Bob and Kathie Reidy
Ellen and John Reister
Brent & Nancy Rembold
Gregory and Brenda Rener
Mr. and Mrs. Dewey J. Renneker
Nadji & Oakley Reynolds
Mr. and Mrs. Ronald G. Rhoads
Joseph & Joletta Richert
Ken and Joan Richmond
Rob and Marylou Riday
Terry and Deb Riedinger
Frank Riggle
Coralyn Riley
Charles and Donna Ritter
Mr. and Mrs. James C. Rivers
Riverside Energy Michigan LLC
Mr. and Mrs. Robert J. Roberts*
David Roberts
Sue Robinson
Ms. Joanne Rochow
Allison Rockey
Alexander Rocklin
Mr. and Mrs. Tim C. Rod
Melanie Rogers*
Ann Rogers
Steve and Sue Rohde
Mr. and Mrs. E. David Rollert
Dr. and Mrs. Albert D. Rollings
Mr. and Mrs. Stephen E. Root
Mr. Greg Rose
Elyn and Barry Rosenthal
Cindy and Ken Rosiek
Mike and Laura Roethermel
Running Dog Studio
Dorothy Runyon
Craig Ryan
Mr. James E. Ryan, Jr.
Kate and Randy Safford

2022 Donors Continued

* indicates Sustainers Circle Member

Nancy, David and Julie Sarne
Ken Savoie
Mr. and Mrs. Erik E. Saxon
Steve and Sharon Scales
Andy and Susan Schaedel
Robert & Donna Schaerer
Mr. Michael E. Scharpf
Gerald Schatz and Barbara Conley
Mr. and Mrs. Timothy L. Schaub
Patricia Schleh
Andy & Amy Schmidt
Folkert Schmidt & Kathleen Sullivan
Derek Schmidt
Michael and Betsy Schneider
Mr. and Mrs. Robert Scholz
Scott D. Schrager & MaryAnne Ford
Jim and Margaret Schrimpf
Mr. and Mrs. Milford J. Schuette*
Bob & Nancy Schulze
Nancy Schwab
April and James Schwaegerle
James Schwantes & Judy Reinhardt
Mr. and Mrs. Benjamin P. Scott
Mr. John A. Scott
Daniel M. Searby
David P. Searby
Patricia Seiler
Pamela Sellers
Jeff and Nita Send
Sumit Sengupta & Cassie Brooks
Mr. and Mrs. James R. Shannahan
Ms. Margaret Shannon
Duane and Margaret Shaw
Mr. Michael D. Shea
Mrs. Patricia D. Shea
Jeanne Sheldon
Ed & Elaine Shernoff
Mr. Michael S. Sherry
Greg and Sally Shoff
Navot Shores & Betty Chu
Lisa Sidel

David Sigman
David Silliven
Mr. and Mrs. Clint A. Simko
Debby Singleton
Vicki Singley
Mr. and Mrs. James R. Sitko
Aaron, Ashley, Eve and Andreas Skrocki
Christine Slater
Mrs. Julianne Slater
Ted and Kelly Slater
Doug and Sherry Slessman
Alyssa Smith
Craig & Ellen Smith
Gary & Phyllis Smith
John & Sheila Smith
Larry and Roo Smith
Mr. Greg Smith
Mrs. Sharon Smith
Tom and Beth Smith
Wendin Smith
Mrs. Betty W. Smykal
David & Joyce Snider
Mr. and Mrs. John B. Snyder*
Nancy Socha
Marcia and Joe Sojkowski
Ms. Deborah Somerville
Eliot Singer & Suzanne Sorkin
Mr. & Mrs. Robert W. Soutas-Little
Mr. and Mrs. Rodney G. Southwell
Christine Sow
Ryan & Nicole Spayde
Carl Spina
Jane and Gordon C. Spink
Dave and Karin Springer
Brad and Jandy Sprouse
Mr. and Mrs. James R. Shannahan
Ms. Margaret Shannon
Duane and Margaret Shaw
Mr. Michael D. Shea
Mrs. Patricia D. Shea
Jeanne Sheldon
Ed & Elaine Shernoff
Mr. Michael S. Sherry
Greg and Sally Shoff
Navot Shores & Betty Chu
Lisa Sidel

Phil and Sue Stinson
John and Margie Stoller
Kelly & Dorothy Stradinger
Thomas Strauss
Alexander Street
Mr. and Mrs. William B. Strubbe
Steve & Sarah Stryd
Kathleen and John Stuart
Daniel Stulberg
Bob & Liz Sugar
Jeffrey Summerwill
Mr. Jerry Sura
Julie Sutfin and Jan Roddy
Jacob Svenson
Wayne and Pat Swallow
Mr. and Mrs. Daniel D. Sweeney
David Sweet and Elaine Kihara
Mrs. Midge Sweet
Carolyn Swift
Mary and Bill Swift
Phil and Denise Swy
Mr. and Mrs. Stephen Syrjamaki
The Taglauer Cabin
Kim Tait & Robert Anderson
Mrs. Phyllis L. Takayama
Mr. and Mrs. Carl R. Taphouse
Mr. and Mrs. William M. Taylor
Ms. Barbara M. Taylor
John and Marcia Teichman
Howard Tejchma & Steven Kuntzman
Blake and Maria Templeton
Bridget Tepper
The Apollo Team
The Ferguson Family Fund
Sara and Nicolas Theisen
Thomas & Lisa Thetard
Thomas H. Thibault & Ruth Winter
Paul Thielking
Mr. Dave Stachnik
Keller and Mary Staley
Warren and Anne Steel
William and Adwoa Steel
John & Lori Lynn Stefek
Cherrie and William Stege*
Dr. and Mrs. Michael G. Steichen
Russ and Anne Steinman
Catherine W. Stephenson
Lea Ann Sterling
Mary Stewart
Scott and Ann Stewart

Mr. and Mrs. Mark Trapchak
Darby Trapp Eland
Mr. and Mrs. Tom Trumbull
Daniel and Lisa Turner
Anastasia Turosky
Mrs. Carole A. Underwood
Martha and Tom Iwanicki
Christine Van Heel
Mr. and Mrs. Frans Van Liere
Mr. Eli S. Van Zoeren
Rhys VanDemark & Kathi McGookey
Deborah Joy Vander & Joanne Scherf
Scott and Marie Vander Linde
Diane VanderPol
Mr. and Mrs. Michael A. VanRiper
Armen Vartian & Candice Foss
Dr. and Mrs. Samuel Vasiu
Roger and Norma Verhey
Meghan Visnick & Jonathan Davis
Mr. and Mrs. Peter Visser
William Vodegel & Jennifer Molony
Madison Vomastek
Tamara Vomastek
William and Pamela Vredevoogd
Mark Waddle
Leslie J. Wadsworth
Mr. Jon F. Wadsworth
Mrs. Jean Wadsworth
David & Judy Wagner
Kathleen M. Wagner
Peter and Diana Wagner
Mr. Joe Walacavage
George & Cynthia Waldeck
Mr. and Mrs. John W. Waldrop
James Walker
Marc and Dani Wallach
Ms. Lorri Wallet
Cyndy Walsh
David and Meg Walton
Kent and Nancy Walton
Wander & Gather LLC*
Michael Ward & Kathryn MacKenzie
Sue Warrick-Smith
Mary K. Weadock
Mr. and Mrs. Allen Weaver
Kevin and Andrea Webber
Helga Wehmeier

Donna Weitz & Bill Smith
Russell and Dolores Welchli
Margie Peterson and Eugene Weng
Mike and Stacy Wenstrup
Deane & Libby Western
Mr. and Mrs. Bruce J. Westover
Char Bickel & Steve Wetherbee
Mrs. Carol Ann Wetters
Whaleback Inn
Mr. Gil Wheeler
Chuck and Janet Whetsel
Ellie & Bill White
Ms. Kathleen Wichman
Mr. and Mrs. John Wickland
Ms. Candace Wiebener
John and Kate Wiegand
Bill Wiersma
Tom and Joan Wigton
Frank Wilberding
Mr. and Mrs. Don G. Wilcox
Mr. and Mrs. Timothy C. Wilcox
Dr. and Dr. Michael A. Willett
Mr. Hugh A. Willey
Rick and Arleen Willey
Caitlyn Williams
Jonathan Williams
Mr. and Mrs. Dennis M. Williams
Andrew Wilson
Calvin & Maureen Wilson
Katherine and Brian Wilson
Mike and Ruthanne Wilson
Victoria Wilson
Rick and Barb Wilson
Mr. William P. Winslow
David and Christine Winterson
Sue Wisneski
Sage Wodarz
Pete and Ginna Woessner
Scott and Brigitte Wolin
Jane Wolov
Debra Wong
Mrs. Jane Wood
Steve and Susan Wood
Joseph Woodford
Dr. John R. Woods
Lauris Woolford
Carol A. Wright
Curt and Cindy Wright
Lynne Wright & Marci Fishman
Phillip & Marcia Wright

Jeff and Shirlene Wuepper
Mr. and Mrs. Jeffrey Wyler
Jim and Kit Wysor
Frank and Denise Wyzywany
Dr. and Mrs. Daniel Yamshon
Patti Yauck
Fred Young and Julie Youmans
Ms. Karen E. Zerrenner
Jeanie Ziebell
Robert and Gayle Zimmerer
Scot and Elizabeth Zimmerman
Paul and Imogene Zimmermann
Kathleen Zink
Miss Mary Helen Zink
Dutch Zonderman & Bonny Everett
Alan, Myriam, Simon & Nicole Zreczny
Rick and Terry Zweering
Anonymous (11)

\$60-\$99

American Tree
Mr. and Mrs. Philip R. Andrus
Mr. and Mrs. Larry L. Andrykovich
Mark & Katie Baeverstad
Mr. and Mrs. Gerald G. Battle
Werner and Barbara Bauer
Katherine & David Bellisario
Amy Benner and Dominic Maceri
Theresa Bethea
Mr. and Mrs. James G. Blashill
Tru North Landscaping LLC
Merri Lynn Bouckaert & Paul Peschel
Mrs. Barbara C. Braly
Hugh and Catherine Brenneman
Mr. Paul Bruce
Mary Jo Brumbaugh
Mr. and Mrs. Thomas B. Brush
John and Connie Brzozowski
Gay Budinger
Mr. Marlin G. Bussey
Kevin Butterfield
The Casciano Family
Patricia Cassidy
Mr. and Mrs. Fred Cepela
Gary and Lee Cheadle
Ms. Deborah Ciavattone
Roberta and Allan Cohen
Ms. Melissa E. Cole

Mr. and Mrs. Raymond K. Cooper, II
Benjamin Cornelius
Ellen Crane
Mary K. Davis & Martha Ramsdell
Mrs. Barbara M. Deerhake
Hannah DePaul
Charlie DeSando and Ellen Gilligan
Mr. and Mrs. Mark J. DeVirgilio
Mrs. Rita M. Dick
Barbara and Barry Dove
Mrs. Nancy D. Downs
Don and Kathryn Drabik
Nancy Hulka and Duane Dunlap
Mr. David W. Egeler
Mr. and Mrs. Kenneth W. Eike, Jr.
Dr. and Mrs. James P. Fadely
Curtis & Patti Fahlberg
William & Susan Fales
Carolyn and Dave Faught
Deborah Foote Faulkner
Mary Fegebank
Peter and Robin Fisher
Jerry Fitzgerald
Jorja Fleezanis
Bob and Sandra Foote
Mr. and Mrs. Lewis G. Gatch
Deborah Oliver and George Gates
Florence B. Gerndt
Mr. and Mrs. Jay Goodman
Mr. and Mrs. Thomas Green
Mr. and Mrs. Robert C. Grigereit
Rolf & Carolyn Hahne
Mr. James Hampton
E. Jay Hansen
Mr. and Mrs. Andrew Harris
Cyndie and Jim Hartmann
Paul Heiberger
Michael and Therese Heinonen
Maureen and Jens Hensel
Marc and Sarah Hernandez
Jeanette Herold
John D. and Ardis Herrold
Mr. and Mrs. Charles W. Herweh
John E. Johnson
Greg Jorjorian and Marlys Conrad
Douglas and Ann Julien
Mr. and Mrs. Allen S. Juris
Heather & Roger Karsten
Mrs. Jane Keen

Bob and Karen Kipp
Mr. and Mrs. Russell R. Kirt
Dr. and Mrs. Henry Klugh
Christopher and Joan Kmorkorka
Ted & Jeanne Kraimer
Mrs. Joan H. Kramps
Laura & Canon Krebehenne
Laurie Krolikowski
Michael and Amanda Kruk
Jerald and Beth Laperriere
Ms. Marilyn H. Latterman
Jamie and Betty Leanderson
James Linn & Kathryn Linn Ossian
Ms. A. Catherine Look
Douglas and Elaine Lunne
Judy Majoros
Sue and Howard Maniloff
Mr. John McInnis
Mr. and Mrs. James P. Meyer
Dennis Miller & Daina Briedis
Susan Muenzer and Craig Nilsson
Mr. Glenn Muhr
Pat and Meridith Mulcahy
Susan Murchie
Sharon Murphy & Sharon Montonye
Mr. John A. Nelson
Margie Nieder
Burton and Carolyn Noll
Nursing Faculty - University of New Mexico
Mr. and Mrs. William J. Orcutt
Ms. Ann Orwin
Terry & Jean Paquet
Andrew Paul
Terry and Kathleen Pennell
Dave and Peg Pepler
Mr. Erik Peterson
Kathleen Phillips
Sally Pilcher
Barry and Susan Porter
Susan and Brian Price*
Christine and Whitney Prince
John and Lyn Dolson Pugh
Mr. and Mrs. Robert Racey
Mr. and Mrs. Frederick W. Reeves
Donald and Amanda Reinke
Tyler & Melissa Rheem
David Rieth
Kathleen R. Roberts
Mr. and Mrs. W. Scott Robertson

Kama Ross
Mr. and Mrs. William M. Rouse, Jr.
Walt and Marj Ruf
Rita Runde
Ms. Sarah Rutherford
Mr. Zachary E. Savas
Bill and Debbie Schmidt
Jeff and Julie Schueler
Jill Schumacher
Mr. and Mrs. Thomas A. Sexton
Mr. and Mrs. Dan Sifferlin
Mr. and Mrs. Ernest H. Smith
Mr. and Mrs. Mark R. Smith
Peter Solenberger & Dawn Chalker
Hayden Spitzley
Mrs. Richard and Linda Stanford
Carol Stark
Mark and Ann Stephens
Deborah Stevens
David and Toni Stevenson
Mrs. Barbara R. Stevenson
Richard & Cathy Stocker
Mr. Timothy L. Strawbridge
Mr. Thomas Streasick
Mr. William Sutfin
Mr. and Mrs. Thomas Sutter
Gale Swan & Jim Bombard
Mr. and Mrs. Roger L. Trim
Dr. and Mrs. James P. Varley
John and Marsha Vingsness
Hillary and Matt Voight
Robert Warrick
Lynne F. Waskin & James Osweiler
Rick and Gail Webster
Helen Westveer
Mr. and Mrs. John R. Williams
Brigid Willis
Mary Woessner
Mr. and Mrs. Laddie Zalud
David & Michelle Zelner
Natalie Zoufal
Jim & Esmine Zubulake
Anonymous (2)

Under \$60

Mr. and Mrs. Werner Adamofsky
Jeffrey and Susan Adams
Mr. and Mrs. Dale Adams
Richard & Camille Albrecht

Arnold and Terrie Allemang
Jason and Suzanne Allen
Cindy & Matt Amyx
Gary Anderson
Howard & Linda Anderson
Anderson Giving Fund
Carol Address and Bob Roach
David S. Arends & Meg Keim
Mrs. Mary Ann Arvo
Katie Auwers
Dave & Holly Ax
Mrs. Gwen Baarstad
Steve and Jackie Baase
JoAnne L. Badge
Robin and Chris Bahle
Douglas Bajor
Mr. and Mrs. John F. Ball, Jr.
Mr. Allan W. Barbish
Patricia Bard
Brianna and Lance Barden
Mr. and Mrs. James V. Bardenhagen
James and Brenda Barnes
Mr. and Mrs. John J. Barnes
Jodie Bathish
Arthur Baum
Mr. Terry Baumann
Merrill and Russell Bausch
JoAnne Beare
Mr. Stephen & Dr. Nancy Beights
Mr. and Mrs. William Bellinger
Ms. Audra Bellmore
James & Joanne Bennett
Mrs. Joan Bensley
Susan Berman
Sally M. Bersot
Lauren Bertelson
Michael & Theresa Bevis
Janis Beyer
Greg Binsfeld
Barbara Blake
Janna and Eric Blakely
Mrs. Joyce Blakeslee
Mr. and Mrs. Timothy Bloomquist
Norma Blumenschine
Rick and Kat Bodette
Mr. and Mrs. Milton C. Boesel, Jr.
Mr. and Mrs. John W. Bogley
Mr. and Mrs. John C. Bollman
Becky Bond
Charles and Janis Bond

Mary Booth
Ross & Wendy Born
Dan and Sue Boss
Caroline, Donna and Curt Braden
Don & Laurie Bradley
Mr. and Mrs. Mark Brant
Roger and Denise Bratcher
Breakwater Company LLC
Todd Bredin
Christopher Brenner & Julia Melges Brenner
Mrs. Dorothy M. Brenner
Mr. and Mrs. Preston Britner
Austin and Lucy Brooks
Barbara Brown
Greg Brown
Dorene Browning
Tom and Susie Bruce
Mr. and Mrs. Ronald Bryant
Carl and Denise Bulat
Patrick & Linda Burdo
Ron and Jeany Burkhardt
Jim Burnham
Mrs. Donna D. Burr
Brendan Burrows & Ann Derrick
Christopher & Wendy Bush
Tammie Bush
Randy Butters & Sarah Pregitzer
By the Bay Garden Club
Bob and Elizabeth Byrns
Shaunna Cahill
Stephen Calkins
Tim Calkins and Carol Saltoun
Jill Calvert Soraci
Tara Carncross & Robert Raymond
Eric and Jenny Carpenter
Richard & Christine Carreno
Frank and Donna Carrico
Mr. and Mrs. Thomas H. Cartwright
Rosemary Cary
Kim Cauchy
William Champion & Beverly Pylman
Mr. Clyde P. Chard
Daniel & Dayna Charlick
Mr. and Mrs. David Chesterfield
Child Life Team at Helen DeVos Children's Hospital
Mr. and Mrs. Alfred F. Chimoski,

Jr.
Lisa Chorny
Colleen Christensen
Zack Christian-Rotramel
Mrs. Jill M. Chumbler
Gerald & Elizabeth Clark
Ken & Lynn Clark
Lyndsey Clark
Mr. and Mrs. Harold W. Clark
Michael and Jodi Clay
William & Delores Clayton
Katie Cleaver & Peter Crabtree
Herbert Cleveland
Mrs. Sally F. Cliff
Daniel and Linda Cline
Joe and Barbara Coffey
Mrs. C.A. Coleman, Jr.
Ms. Melissa M. Conroy
Constance Cook
Mr. and Mrs. Albert Cook, III
Joe & Kathy Cooney
Cheryl Cooper
Jeanne Corbett
Julie Cordano
Peggy Core
Mr. and Mrs. Bruce Cornell
Lew and Virginia Coulter
Ann Couturier
Kristin Crackel
Scott Cramton and Amy Kowalak
Robert and Nancy Crawford
Laurel Crilly
Susan Crowell
David and Jane Crowner-Friedman
Carol and Dan Cruz
Mr. and Mrs. Robert Cullum
Bill and Barb Curtis
Mr. and Mrs. William G. Cutler
Connie Dahm
Richard Dale
Allen & Jane Damschroder
Mathew and Barbara Dansbury
Douglas and Rozanne Darland
Robert and Jacqueline Davidson
Ronald Davis
Susanne Dayton
Maribeth De Meester
Joe Defors & Jan Rygwelski
Ms. Haley DeKorne
Erin DeLaney

2022 Donors Continued

* indicates Sustainers Circle Member

Mr. and Mrs. Cormac B. Delaney
Dorothy M. Delehanty
Drew Denison
David & Jennifer Denton
Margaret A. Detrick
Mrs. Pam Detweiler
Mr. and Mrs. Roland DeYoung
Ms. Caroline Dieterle
Conelia Dixon
Mrs. Renie Dohrmann
Stuart L. and Susan Doneson
Jill Dooley and Annette Brown
Mr. and Mrs. Andrew Dotterweich
Ms. Emily Douglas
Kathy & Charles Dowe
Christine Driscoll
Alice Droeger
Mrs. Bette D. Dugger
Melissa Duke & David Tepoorten
Mrs. Lucille C. Dumbrell
Catherine Dunn
Edwin R. & Kathleen L. Dunn
Drs. Claire Duvernoy & Frank Bogun
Mrs. Susan H. Dyche
Jan Earl
Mrs. Nancy Eaton
Terrell and Pat Ebright
Tracy Egeler and Lynn Herman
Ken and P.J. Ehalt
Mr. and Mrs. Vincent Engerer
Mr. Lawrence L. Epple
Ashley Erdely
Michael & Karen Erdman
Gail Ericson
Kathy Evaldson
Sally M. Evaldson
Will Evans
James Faber
Gerry Faler
Leonard Fawcett
Barry & Sandy Feist
George Felton & Karen Thomas
Mr. and Mrs. John Ferguson
Karen Fernandez

Dawn Ferran
Warren and Cathy Feyt
David Finkbeiner
Kevin Finkbeiner
Mr. and Mrs. D. James Firestone
Art & Linda Fischer
Corey Fischmann
Katherine and James N. Fisher
Matthew and Kelli Fitzgerald
Calvin Floyd
Pat and John D. Foote
Mr. and Mrs. Fred C. Ford
Allen and Nancy Forsaith
Mr. and Mrs. Scott Frary
Crystal Frazee
Steve and Paige Futrell
Jennifer Gable
Eddie & Lana Gallop
Mr. Robert G. Gamalski
Mr. and Mrs. J. Carl Ganter
Mr. and Mrs. James A. Gardzulis, Jr.
Mrs. Darlene Garland
Sabrina Garland
Mary Lou Garwood
Mrs. Jacqueline Gazoul
Paul and Ruth Geil
David and Sharon Geisler
Laurie Gerdes and David DeGraaf
Carol Gerlach
Michael and Reta Gibbons
Mr. and Mrs. Lloyd N. Girbach
George and Pat Giza
Mr. Gerald Glencer
Mr. and Mrs. Charles Godbout
Mr. Richard Golab
Goldstein Bershad & Fried PC
Mr. and Mrs. Dennis Golec
Julie Gomez
Mr. and Mrs. Philip W. Goodspeed
Diane E. Gordon
Lucy Graff
Frank Grant
Mrs. Dorothy Grant
Robert and Lois Grant
Susan & Julie Green
Bridget Greenan and B. Regan
Patrick
Philip & Elise Greene

Richard and Patty Greene
Mr. and Mrs. Edward W. Greeno
Ruth and James Grey
The Grisdale Family
Margaret Groeber and Peter McCann
Don and Michele Groene
Mr. Tom Grogan
Mr. and Mrs. Berndt H. Gros
Mrs. Barbara L. Grosmark
Patricia Haber
Mrs. M. Kathleen Hackleman
Ms. Karen Hague
Robin Hamilton & Ron Kerans
Mr. John J. Handloser
Steve Handlovits
Kurt & Kate Harden
David and Elizabeth Harnadek
David and Marcia Harris
Nick Harris
Richard & Karen Harrison
David Hartwig
Mr. and Mrs. Kevin S. Harty
Ms. Joanne Hass
Ms. Gail Hastings
Robert Hauske
Mrs. Arlene Heckl
Mr. and Mrs. Clarence E. Heerema
Mrs. Jean G. Hengelbrok
Barbara Henshaw
Sheila Hettler
Judy Hicks & Eric Hespenheide
Debby Hiler
Anne and Tony Hill
Richard and Elizabeth Hill
Mollie Hilliard and Beth Mauldin
Zachary & Holly Hillyer
Claire Hiltz
Warren and Suzanne Hinsch
Mr. and Mrs. William Hischke
Gordon Hoeksema and Susan Griffioen
Suzanne Hoff
Tamara Hoffbauer
Philip Hoffer
Heather Hoffman
James Hogan
Kathryn Holtfreter
Adam Hoog
Tom and Patty Hopcian

Len and Jill Hower
Gayla Hoxsie
John and Anne Hoyt
Christopher Hronek
Rowell and Penny Huesmann
Mary Hughes
Ms. Hester A. Hull
Mr. and Mrs. David D. Hunter
Ray & Mary Hunter
Richard Hylwa & Kathryn Allen
Mike and Carol Hypio
Dave Imboden
Mr. Jack Ingold
Ms. Mary Kent Ireland
Thomas and Lynn Irvine
Ms. Dianna Ives
Lary and Sarah Jackson
John Jacobs
Mr. Clifford Jacobs
Mr. and Mrs. Chet Janik
Paul and Barbara Janowiecki
Mr. and Mrs. William E. Jansen
Mary and John Jaye
Bari Johnson
Bob and Karen Johnson
Jennifer and Greg Johnstone
Richard Jorgensen
James W. Joyce
Matthew Jungers
Mike Kegler
John and Lana Keith
Mr. and Mrs. Michael J. Kelly
Mrs. Anne W. Kelly
Mr. Gregory Kenny
Frank Kerker
Roger Kerson and Robin Vaplan
Mr. and Mrs. Rodney Keteyian
Mr. and Mrs. Steven W. Kilgren
Gerald and Michaline Kilts
Brian and Christine Kimmerly
Stacey and Brian Kinney
Bill and Maria Kinzie
Mr. Richard L. Kirby
Mr. and Mrs. John A. Kish
Nancy Kisicki
Dan Klein
Candy Kleinheksel
Karen Klix & Kaetlin Breen
Mr. and Mrs. Bruce Klosner
Mr. and Mrs. Stephen W. Knoll
Mr. and Mrs. James Kobberstad

Kim and Anne Koehler
Mr. and Mrs. John G. Koelzer
Lisa Kohl
Mr. and Mrs. Pete Kohrs
Mr. and Mrs. John Korch
Mr. and Mrs. John M. Koval
Jessica Kovan
Mr. Walter J. Kraimer
Mrs. J. Patricia Krajewski
Andi Kramer
Mr. and Mrs. John G. Krause
Claire Kretchmer
Karl & Kristan Kroening
Trish's Dishes
Dale & Connie Kubicki
Joseph Kuhlman
Mr. Tom Kuieck
Jan Kyff
Mr. and Mrs. James LaFave
Edward C. Lake, Jr.
Sid and Maria Lammers
Mr. and Mrs. Bruce Lance
Lisa Land
Mark & Dawn Langdon
John Lange
Marsha and Martin Langhorst
Mr. and Mrs. Theodore J. Lanham*
Mr. Joey Latterman
Michael & Patricia Lawrence
Mr. Rob Lawson
Jeremy and Michele Leanderson
Christine Lee
Steven Lee and Julie Tarr
Cathy Leece
Laurel Leithauser
James Lenic
Mr. and Mrs. Andy LePere
Les Jardinieres Club
Scott and Jeannine Leslie
Mr. and Mrs. Terrence Lesniewicz
Mr. Martin Leugers
Elise Levasseur
Mrs. Judith Levin
Carol Lingman
Art & Mary Link
Nancy and Victor Lisabeth
Juliana Lisuk & Nicholas Pandolfi
Bob and Judy Lober
Mr. Guy Lovelace
Mike & Kay Lubert

Tamara Lubic
Erika Lund
Ms. Kristen Lund
Eric Lynch
Patti Lyon
Philip & Carol MacFarland
Alec and Sarah Machiels
Dori Mack & Brad Hoicowitz
Magnit Global
Phil & Kristen Maguran
Lillian Mahaney
Frank and Kathy Maly
Susan Manecke
Al & Odette Manzor
Gene & Susan Mapes
Mr. and Mrs. Douglas G. Mason
Alison Spohn Masters
Mr. and Mrs. Bill Maul
Alex and Jane Maximovich
Joni and Mike May
Ms. Ellen J. Maycock
Katelyn Maylee
Phil Maynard
Lynn & Jim McAndrews
Mr. and Mrs. Michael P. McCalden
John McCann
Lucy McClintic
Charles and Judith McConnell
Maril McCord
Bruce and Ruth McDonald
Jerry McDowell
Jack and Becky McFellin
Nichole and Michael McHugh
Mr. and Mrs. Daniel J. McKane
Mr. and Mrs. Matthew N. McKenzie
Thomas Mead & Lauriann Mannion
Greg and Linda Meide
Joseph & Kathleen Melito
Kimberly Melvin
Tammi Messersmith
Martin Meulendyke
Mr. Jason Meyer
Rob and Judy Meyer
Cal Meyers
Sara Michael
Saulius and Lisa Mikalonis
Mr. and Mrs. Richard C. Mileham
Donna L. Milius
Brian & Noelle Milkey

Larry and Laureen Miller
Dena Mitchell
Pat Mitchell
Harriett & Ralph Mittelberger
Marlo & Jim Moeller
David Monforton and Anne Vanderkloot
Melissa Monroe
Cindy Moore and Eric Gould
Mr. and Mrs. Kevin D. Moran
Lisa Morin
Jack & Kathy Morton
Sophia Mosher
Ken & Ann Mosier
Benjamin Mothershead
Rick & Jennifer Mouty
Brad and Bertha Mowatt
Mark and Martha R. Moyer
Mr. and Mrs. Willard L. Mudget
Rose Mulholland
Bruce and Jane Mullkoff
Joe and Dawneanne Munn
Chris Murdoch
Mr. Cliff Murie
Jim and Geri Musial
Mr. and Mrs. Donald H. Myers
Scott and Paula Myers
Mary Nave
Heather Neitzke and Scott Keely
Mrs. Marilyn Nell
Isabella Nelson
Pete Nelson
Robert and Chris Newell
David & Mary Newhouse
Thomas Nixon & Gail Riley
Mr. Will Noling
Paul and Christine Norman
Timothy and Holly Norman
Douglas Northrop
Judy Nyman
Mr. James W. O'Bannon
Mrs. Nanette O'Connor
Michael Odren
OneHope
Cynthia and Garrick Opie
Ron and Sue Osgood
Katie and Diana Owenswood
Mr. and Mrs. Frank L. Padella
Craig & Cathy Parling
Mr. Eric J. Pashley
Mr. Dan Patterson

Anna Pearson
LeighAnna Peck
Sue Peckham
Joe and Ann Peczynski
Victor and Bette Peirce
Frances N. Perkett
Thomas and Jean Petersen
Mrs. Elsie Peterson
Mr. Hans Pijls
Alexandra Pike
Stephen Pincus
Wen Piotrowski
Douglas & Charlene Plagens
Gerri Erickson Platner and Margaret Platner
Jacob Pluta and Margaret Maxbauer
Susan Pocklington
Port of Old Mission Condo Assoc. No. II
Justin & Alexandra Potes
Mr. and Mrs. Calvin Powell
Chris and Kathryn Preston
Mr. Alfred J. Prizlow
Dr. John Putz
Alison Quiring
Jen, Tony and Joe Raabe
Mr. and Mrs. Mark Raaymakers
R. Douglas and Thressa Race
Megan Rachford
Mr. and Mrs. Bruce D. Ragan
Peter & Megan Raphael
Mike & Sarah Rapp
Scott and Mary Raymer
Thomas and Nancy Reichard
Ray and Ginny Reilly
Kenneth Resnicow & Rebecca Cunningham
Gordon and Nancy Rettie
Lois Rice
Cynthia and Jim Rich
Ann Richmond
Lauren Rickman
Richard Rieth
Daniel & Helene Rimer
Larry Risbridger
Jim Ristine
Janet Robin
Mr. Logan G. Robinson
Tom and Jana Rockne
Chuck, Sara and Anne Rodeck

Lorraine Rogers
Mike and Julie Rogers
Roger Rowitz
Bradley and Kathy Roynon
Paula & Les Rudnick
Weldon Rutledge
Judith Ruzumna
James and Jennifer Sager
JoAnn Sahs
Mr. Charles Sommers
Sally A. Somsel
Elizabeth Sonnega
Mrs. Martha J. Speer
Brad and Karen Spencer
Mrs. Sita Spring
Spurlock Landscape Architects
Drs. Beverly & R. Lawrence St. Clair
Mr. Jack St. John
Mrs. Theresa J. Stamos-Underwood
Dr. and Mrs. Jeffrey C. Standley
Sheila Steffel
Nancy Stephenson
Jane Sterken
Bob and Judee Sternberg
Norman & Susan Stewart
Wendy Stock
Marian Stolz
Mr. and Mrs. John Storey
Julie Stotz-Ghosh
Chris Strand
Steve and Cindi Strong
Marvin and Carol Studinger
Peter, David and Lenore Suchy
Dr. Nora Sugintas
Lynn Sutton
Mr. Terrence M. Sutton
Sue and Stefan Svensson
Dennis Swartout
John and Melanie Sypolt
Mr. and Mrs. David Taghon
Gretchen Tarras
Kathryn Tatham
Stephanie Taylor
TC Picnic Co.
Don and Kathy Thomas
Drs. Philip S. Thomas & Henrietta Barnes
David and Beverly Thrower
Ms. Christine Tiderington
Mr. Stephen W. Tituskin

Mr. Jon F. Smith
Ms. Nancy Smith
Sherwood Smith
W. Dale Smith
Mr. and Mrs. Richard M. Snede
Tom & Ginger Sobel
Mr. and Mrs. Carl V. Soderlund
Emma Somers
Mr. Charles Sommers
Sally A. Somsel
Elizabeth Sonnega
Mrs. Martha J. Speer
Brad and Karen Spencer
Mrs. Sita Spring
Spurlock Landscape Architects
Drs. Beverly & R. Lawrence St. Clair
Mr. Jack St. John
Mrs. Theresa J. Stamos-Underwood
Dr. and Mrs. Jeffrey C. Standley
Sheila Steffel
Nancy Stephenson
Jane Sterken
Bob and Judee Sternberg
Norman & Susan Stewart
Wendy Stock
Marian Stolz
Mr. and Mrs. John Storey
Julie Stotz-Ghosh
Chris Strand
Steve and Cindi Strong
Marvin and Carol Studinger
Peter, David and Lenore Suchy
Dr. Nora Sugintas
Lynn Sutton
Mr. Terrence M. Sutton
Sue and Stefan Svensson
Dennis Swartout
John and Melanie Sypolt
Mr. and Mrs. David Taghon
Gretchen Tarras
Kathryn Tatham
Stephanie Taylor
TC Picnic Co.
Don and Kathy Thomas
Drs. Philip S. Thomas & Henrietta Barnes
David and Beverly Thrower
Ms. Christine Tiderington
Mr. Stephen W. Tituskin

J. Richard Tobin & Peggy Wilson
Susan Tower
Vicki Trent
Dave & Heather Trumble
Lucy Lea Tucker
Dr. Frances H. Tully
Nancy Turner and Edward Andres
Michelle Tylka
Ted and Patti Ulisse
Mrs. Marion Unwin
Marion Usher
Nancy Usitalo
Mr. Harold M. Utley
Sandra Uusitalo
Lee Kremin & Marjolijn Van der Velde
Mr. Douglas M. Van Zoeren
Tom and Alice Van Zoeren
Rebecca Vancil
Don and Carol Vanderberg
Cunningham
Carol and Rick Velde
Douglas Verellen*
Rolf and Mari Von Walthausen
Judy Wagner
Carol Waite
Mr. and Mrs. Donald F. Wall
John Wallington
Tim Wallington
Priscilla Walmsley and Doug Kimble
Brian Walters
Jennifer Walters
Emily Waltz
Elizabeth Ward
Priscilla Ware
Thomas & Donna Warman
Carol L. Waters
David Watt
Sharon Wawrzyniak
Mrs. Joyce M. Wayt
Mrs. Barbara G. Weber
Mr. and Mrs. James R. Weckenbrock
Mark and Lee Weick
Nadine Weirich
John & Melinda Welch
Felicia Wellington
John and Ruth Westol
Mrs. Kit Whalen
Mrs. Susan L. Wheadon

Norman and Mimi Wheeler
Nan and Ron Wick
Rick Wiles and Maggie Daniels
Curtis Wilkerson & Anne Hitt
Mr. and Mrs. Stephen Wilkerson
Gary and JoAnn Williams
Kathleen R. Williams
Dr. Donald Willman
Andrew Wilson
Katelyn Wilson
Mr. and Mrs. Colby Wilson
Jim and E.J. Winslow
Rachel Winslow and Ty Maxon
Jim and Judy Wojciechowski
Joan A. Wolf
Allen and Janice Wolfe
Thomas and Sarah Woods
Marilee Woodworth
Zach & Erin Word
Matthew and Taya Workum-Byers
Mr. George Wright
Mr. and Mrs. Wayne Wunderlich
Ms. Wendy Jo Wyatt
Wendy Wygant & Steven Davis
Takei Yamasaki
Mr. and Mrs. Michael W. Yeiser
Jerry and Barbara Young
Mr. and Mrs. Charles Zammit
Joel Zemanek
Merilyn Ueno and Doug Zernow
Donald and Beth Zieman
Mr. and Mrs. Donald L. Zink
Dr. and Mrs. Robert Zondervan
Greg and Ingrid Zotter
Anonymous (6)

Memorials & Honorariums

Thank you to everyone who made a gift to honor or remember a loved one in 2022. Gifts such as these are directed toward the care and maintenance of our natural areas and preserves.

Memorials

January 1- December 31, 2022

Thank you for your gifts made in memory of the names shown in bold.

Horace and Bobbie Abbott
Porter and Anita Abbott

George Allen
Rick and Sally Clements

Mrs. Mary C. Allen
Mrs. Rosemary R. Bennett
James & Bayanne Hauhart
Mrs. Mary Elder Schaff
Mr. and Mrs. Justin A. Stanley, Jr.

Judith Gallup Armstrong
Deborah Armstrong

Michael Joseph Arvay, Sr.
Mrs. Carol LeGray

Jonathan Aylward
Mrs. Dorothy M. Brenner
Mr. and Mrs. Charles Zammit

John Ballantyne
Cindy & Matt Amyx
Tom and Janet Dohr
Easling Construction Company
George Prayer Group
Mark Lempeler
Ed McInnis
Lauren Santangelo
Les Jardinieres Club
David & Judy Wagner

Erich Bandemehr
Nadia Bellardi

Erick, Enzo and Piper Bandemehr
Andrea Martinez

Dorothy Barker
Michael & Nanci Baldridge
Janet Robin
Lorraine Rogers
Lisa Sidel
Marion Usher

Herman Behne
Drs. Paul Dechow & Joanne Blum

Richard Benner
Amy Benner and Dominic Maceri

David Binstadt
Bryce, Emily, Kensi & Annika Binstadt
Richard Binstadt
Don & Laurie Bradley
Gay Budinger

Richard & Mildred Burns
Mr. and Mrs. John G. Davey
Erin Dorsey
Melissa Duke & David Tepoorten
Barry & Sandy Feist
Eric Goodman
James Hogan

Charlie & Sandy Minert
Melissa Minghetti
Scott Montgomery
Dr. and Mrs. Patrick Oriel
Roger Rowitz
Vincent Saul
Pamela Sellers

Ed & Elaine Shernoff
Kathleen Shimanek
Carol and Rick Velde

Mardi Black
Ellen Kohler and Matt Cauchy
Mr. and Mrs. Timothy A. Parvin

Mrs. Wilamae Bockstahler
Patricia Pollock and Mark Rodak

Anne Bogley
Mr. Gilbert A. Bogley

Randy Borns
Richard & Camille Albrecht

Mr. and Mrs. Dale Boone
Garrett (Buddy Boy) Borns
Rick Borns
Jack A. Bosgraaf
Richard and Barbara Bowzer
Todd Bredin
Paul Busman
Michele Cannon
Michael and Kavitha Celentino
Lisa Chorny
Caley Corsello
Catherine & Phil Corsello
Karen & Ryan Cotton
Randy & Deb Dahlquist
Lee and Jennie Dake
Virginie Dezan
Jeannie Farren

Greg Oleszczuk & Jeanine Taghon-
Oleszczuk
Tracy Piasecki
Cyndi & Denny Powers
Hazel Redman
Allison Rocky
Paula & Les Rudnick
Bob & Nancy Schulze
Mr. and Mrs. Jeff Shutz
Tom & Ginger Sobel
Sheila Steffel
Julie Sutfin and Jan Roddy
Dave & Heather Trumble
Madison Vomastek
Tamara Vomastek
Brian Walters
Debra Willbrandt

Dawn Ferran
Paul and Julie McNeilly
Donna L. Milius
Craig & Lin Milius
Tamera Scott
Thomas & Donna Warman

Nancy and Dan Carlson
Mike & Kay Lubert
Sue Peckham

Scott Casey
Mrs. Sally Casey

Carolyn Chormann
Mark and Becky Alonzi

Mr. and Mrs. John Withee
Bill and Rita Witter

Dondo and Catherine Ciavattone
Ms. Deborah Ciavattone

John Cole
Richard Dale

Sterling H. Cole
Melissa E. Cole
John and Barbara MacDougall
Susan and Brian Price
Mr. Lee Taft

Paul Cova
Peggy Cova
Tomas Martinez
Rick and Barb Wilson

Prof. Douglas D. Crary
John and Marsha Chamberlin

Kathleen J. Crispell
Azimuth Capital Management
Jan Hewlett
Eleanor Luedtke

Lorli Wiedenkiller Dolson
John and Lyn Dolson Pugh
Jeanne Dolson and Michael Yocum

Robert and Lorli Dolson
Kathleen Dolson and Christopher Spilling

Diane Drayson
Roland Drayson

Mrs. Frances T. Drew
Dr. and Mrs. James P. Fadely

Eugene Driker
Gretchen Baron
Missy Bean
Leslie Brown
Florence Cohen
Chris Gross
Jodie Krasnick
Marcy Leach
Monica Labe
Beth Radner
Amy Wise
Margie Yaker

Mrs. Sandy Freeman
Mr. and Mrs. David D. Hunter

Susan Freeman
Marilyn Andrew
Jim and Karen Click
Ann Crane
Ronald Davis
Alan and Bobbie Falquet
Tim & Caroline Fraker
Dick & Judy Freeman
Kurt & Kate Harden
Amanda Isaacson
Christopher & Katharine Kenah
William Kleinert & Leslie Johnson
Susan Manecke
Mike & Sarah Rapp
Gerald & Jamie Sutton
Kathryn Tatham
Debra Wong

Kathryn Frerichs
Nancy Fitzgerald & Jerry Agnew
Larry Mawby and Lois Bahle
Judith Ruzumna
Gale Swan & Jim Bombard
Joan and Randy Woods

Tom Frohman
Drs. Nancy Cantor & Steven R. Brechin
Annette Deibel
Dori Mack & Brad Hoicowitz
Mr. and Mrs. Bill McMenamy
Catherine W. Stephenson
Mrs. Eleanor B. Stephenson

Mary (Bee) Fuertges
Mrs. Sharon Smith

Jim and Pat Ganter
Patty Pelizzari

Lee Gardner
Mr. and Mrs. David T. Gardner

Anthony Garvin
Mary Socha

Glen Gerard
Mr. and Mrs. Peter Miller

Nancy Giles
David Giles and Ellen Katz

Merle Duey
Mr. and Mrs. William J. Miller

Donald Duff
Mrs. Judith M. Egeler

Mrs. Mary Duff
Mrs. Judith M. Egeler

Thomas Dunfee
Julie & Jeff Moore
Dr. and Mrs. Richard L. Nielsen

Mrs. Julia S. Dutton
Anne F. Adams
Mrs. Lena A. Ball
Paul and Patty Cobb
Kelly and Susan Haun
Mr. and Mrs. Peter Miller
Linda and Jim Shad

Mrs. Nancy Elifritz
Cathleen C. Fisher

Mark Evangelista
Barry and Lynn Adler

Shannon Flynn Celarek
T. Jeff Davis & Ken Smith

Joseph Flynn
Larry and Laureen Miller

Peter Flynn
Laurie Starr

John F. Folino
Mr. and Mrs. Charles W. Herweh

Glenn Ford
Kimberly Ford

Babs Forner
Kathleen Phillips

Dr. Karen Gilhooly
Mr. and Mrs. Dennis Murphy

Paula Gits
Lena A. Ball
T. Jeff Davis & Ken Smith
Mrs. Judith M. Egeler
Charles and Judith McConnell
Tom Skinner

Rick Grauer
Tresa Grauer
Alan & Brigid Guttmacher
Mr. and Mrs. Edward C. Hanpeter
Nancy Kisicki
Claire Kretchmer
Howard & Debbie Leaman
Mark and Lynne Lyons
Diane Lytle
Margie Mellen
The Melvoin Family

Nancy Gross
Tom Gross

Mrs. Maryellen Hadjisky
Warren and Anne Steel

Leah Hamrick
Linda Johnson

Timothy Hancock Schmidt
Folkert Schmidt & Kathleen Sullivan

Rich Hoover
Beth Hoover

Charles and Isabelle Houdek
Mr. and Mrs. Daniel G. Korson

Kay Houghton
Mr. James E. Joyce

Brian Howe
McCurdy, Wotila & Porteous PC

Dolores Hughes
Robert and Laura Hughes

Kathleen Imboden
Dorene Browning
Bill and Barb Curtis
Will Evans
Art & Linda Fischer
Mary Ellen Grant
Dave Imboden
John Imboden
Joshua Imboden
Kathryn Imboden
Ken & Ilene Imboden
Kevin Imboden
Bradley Luckhaupt
Dena Mitchell
Pat Mitchell

Russ & Myriam Nicholson
Janice Oshinski
William Oshinski
Andrew Paul
William Reighard
Deborah Scheetz
Heather & Kevin Scheetz
Karen and Chuck Sharkey
David Tabolt & Lisa Genesen

John and Mary Tris
Matt & Nova Vulcanich
Tim and Betsy Warner
Ellie & Bill White

Jane Woodward and Family
Jane, Pat, Dean, John, Paula, Sue, Bill,
Tina, Ron and Bill

Bart and Gail Ingraham
Lew and Virginia Coulter

Gail Ingraham
Rebecca Bunn
Joan Derengowski



Photo by Sheen Watkins

Mrs. Janet E. Goettle
Mr. and Mrs. Richard J. Goettle, IV

John Goettle
Mr. and Mrs. Richard J. Goettle, IV

Richard Goettle
Mr. and Mrs. Richard J. Goettle, IV

Enid Grauer
Arthur Baum
Susan Berman
Birchwood Shores Preservation Assoc.
David Blackmore & Barbara Worland
Judy Bobrow & Jon Desenberg
Ross & Wendy Born
Elaine C. Driker
Jane Sterken
Daniel Stulberg
Phil and Denise Swy
Susan Tower
Andrew Wilson
Alan, Myriam, Simon & Nicole Zreczny

Cyril Moscow and Randie Levin
Mary Nave
Ben Nieder
Danny Nieder
Elliot Nieder
Margie Nieder
Stephen Pincus
Nadji & Oakley Reynolds
David Roberts
Mr. and Mrs. Robert J. Roberts
Mr. and Mrs. Richard A. Rossman
Perry and Deborah Samson
Nancy, David and Julie Sarne
Bluma Schechter
Jill Schumacher
Joy Schumacher
David Sigman
Nancy R. and Berkley W. Duck
Easling Construction Company
David Edelstein & Jennie Berkson
Gina and John Erb
Mr. and Mrs. David Grauer
Diane Grauer

William and Jane Hancock
Folkert Schmidt & Kathleen Sullivan

Dorothy Hanpeter
Mr. and Mrs. Bradley T. Hanpeter

David Harkness
Mr. and Mrs. Paul Harkness

Marilyn Harra
Tom & Nancy Gilman

Larry Hauser
Mrs. Judith M. Egeler
Larry Mawby and Lois Bahle

Maureen Helfers
Mr. Mark Helfers

Alyce Hoban
Mr. and Mrs. Richard C. Mileham

Memorials & Honorariums cont.

Lee and Jill Foerster
Mr. and Mrs. Andy LePere
Mark and Lynne Lyons
Larry Mawby and Lois Bahle

Julie Dunn Johnson
Amanda Burke
Patricia Cassady
Mary K. Davis & Martha Ramsdell
Jeanne and Bill Dennler
Mr. and Mrs. C.R. Dunn
Drs. Michael and Carrie Dunn
Gina and John Erb
Jeff and Susan Green
Lynn and Doug Hansen
Sheila Hettler
Mr. and Mrs. David D. Hunter
Christopher Knowles & Marcia McAllister
Mr. and Mrs. Andrew B. Morrow
Susan and Brian Price
George & Hilda Roach
Vicki Singley
Mr. and Mrs. James Smith
David & Joyce Snider
Mr. and Mrs. Gary B. Twomey
Arlington & Carol Williams

Merlin Lavrack
Kevin Lavrack

Jane Lawson
Will Lawson

Curt Leece
Cathy Leece

Phyllis Leon
Janice Jerome

John A. Leugers
Mark and Lori Leugers and Family

John Lindquist
David and Dana Lindquist

Jerry Lubanski
David Lubanski & Dr. Carrie Dul

Ms. Anita H. Jones
Folkert Schmidt & Kathleen Sullivan

Bill Julian
Jason and Suzanne Allen
Kevin Butterfield

Mrs. Jacquelyn Kellogg
Mrs. Rosemary R. Bennett

Brian Kilinski
Sandra Kilinski

Katherine Knight
Nancy Knight

Barbara Koskamp
Melanie Koskamp and Maria Zierk

Jeff Lamont
Mr. and Mrs. Philip Boria

Ms. Judy Erwin
John and Lana Keith
Charmain and Steve Later
Chris and Kathryn Preston

Julia H. Langdon
Langdon-Nichols Family Trust

William Laskey
Mr. and Mrs. Peter Miller

Merlin Lavrack
Kevin Lavrack

Jane Lawson
Will Lawson

Curt Leece
Cathy Leece

Phyllis Leon
Janice Jerome

John A. Leugers
Mark and Lori Leugers and Family

John Lindquist
David and Dana Lindquist

Jerry Lubanski
David Lubanski & Dr. Carrie Dul

Kurt Luedtke
Eleanor Luedtke

Mrs. Mary E. Lyons
Porter and Anita Abbott
Kent & Becky Holton

Leon Lysaght
Barry and Lynn Adler
Gina and John Erb
Gene and Kathy Garthe
Heather and Jeff Goliber
Jeff and Susan Green
Mr. and Mrs. Andrew Harris
David and Marcia Harris
Dr. and Mrs. Patrick Oriel
Natalie and Eric Senne
Bruce and Betsy Wagner

Daniel Mahaney
Lillian Mahaney

Barbara Majoros
Annette Deibel
Stuart Gold
Goldstein Bershad & Fried PC
Paul & Pat Ladas
John Lange
Judy Majoros
Mark & Mary Majoros
Melissa Monroe
Alexis, Bob, Kara and Leah Platoni
Sue Robinson
Mr. and Mrs. Milford J. Schuette
Craig & Debbie Shaw
Bridget Tepper



Jennifer Walters
Calvin & Maureen Wilson
Jim & Esmini Zubulake
Ally, Kristen, John, Chiqui, Pamela and Obie

Marlis Mann
Mrs. Lena A. Ball
Gay Budinger
Chuck and Susan Cady
Mrs. Judith M. Egeler
Gina and John Erb
Mr. and Mrs. Jeffrey E. Fisher
Craig and Pat Holmes
Mrs. Maxi Neugebauer
Mrs. Patricia D. Shea
Dr. and Mrs. James P. Varley

Harry Markus
Emily Waltz

Thomas Markus
Emily Waltz

Karl Marsh
Kate Mason & Mary Lee Miller
Joan and Randy Woods

Ann Mason
Mrs. Treva N. DeJong
Thomas Mennie
Joseph & Joletta Richert
Julie Stotz-Ghosh

Karen R. Viskochil
Child Life Team at Helen DeVos
Children's Hospital

Eric Maxwell
Reinhold & Sharon Trager

Jerry McCarthy
Mary Beth Coburn

Pat McClellan
Judy Nyman

Bill and Eileen McElligatt
Kristen McElligatt
William McIlrath
Mrs. Pauline McIlrath

Mrs. Mary Ann Meanwell
Mrs. Rosemary R. Bennett
Joan H. Searby

Mrs. Adelia Ball Morris
Ann Morris Stack

Jim Moyer
Mr. James E. Joyce

Earl and Marie Muhleck
Rita Ball

David Myers
Mary Myers

Cherry Bay Orchards, Inc.
Holly Coley
Great Lakes Packing Company
Karl Lyon
Peter Magoun
Artie & George Martin
Rose Mulholland
Ken and Joan Richmond

David Passeno
Kathleen and John Birney
Patrick Birney
Mr. and Mrs. John J. Schaffer
Mrs. Greta Solomonson
Kris Solomonson

Mr. William D. Peace
Mr. and Mrs. Edward J. Collins
Gina and John Erb
Cathleen C. Fisher
Mr. and Mrs. Peter Miller

Mrs. Janet G. Peppler
Dave & Holly Ax
Mrs. Judith M. Egeler
Sally Hamby
Philip Hoffer
Dr. and Mrs. Patrick Oriel
Dave and Peg Peppler

James Peterson
Jeanne Smearsoll

Shirley Peterson
Mr. and Mrs. Peter Miller

Jacqueline Pool
Carol Andress and Bob Roach
T. Jeff Davis & Ken Smith
Hans-Peter Lowry McDonald & Marie Girardot
Jeff and Susan Green
Mark & Haleigh Maurice
Mr. and Mrs. Peter Miller
Port of Old Mission Condo Assoc. No. II
Mr. and Mrs. Gary B. Twomey
Mr. and Mrs. John C. Zink
Miss Mary Helen Zink

Majel C. Obata
Mr. and Mrs. Robert Biggs
Gen Obata
Kiku Obata
Bruce and Betsy Wagner

William and Shirley Pritchard
Gary Pritchard and Chuck Novak

Jack S. Putnam
Michael and Wendy Putnam Pierce

Dr. Stuart C. Rankin
Mary Ihle

Sandra Redlon
Frances N. Perkett

Barbara Reinert
David Sweet and Elaine Kihara

Marjorie Richardson
Patricia Richardson

Lou and Richard O. Ristine
Mr. and Mrs. Richard O. Ristine, Jr.

Mrs. Paula M. Robertson
Carol and Lee A. Bowen
Kaila Bylsma
Mrs. Judith M. Egeler
Lee and Jill Foerster
Mr. and Mrs. Dan S. Harkness
Mr. and Mrs. Theodore J. Lanham
Tom Skinner

Doyle Root
Lisa Root Moore

Christopher Rydahl
Julie Cordano
Ann Couturier
Linda Coyne
Christopher & Katherine Hinze
Patti Lyon
Thomas Mead & Lauriann Mannion
Craig & Cathy Parling
Carolyn Schwab
Bobbie Sladek
Gretchen Tarras
Don & Lorrie Thompson
Nancy Usitalo
Sandra Uusitalo
Barb Zupin and Tom Gardner

Rowan Sanford
Mr. and Mrs. Dennis Murphy

Jayne Schafer
Terry & Nancy Harris
Jim Schafer
Diane VanderPol

Donald Schank
Barbara Blake
Mary Fegebank
Gary & Vickie Miller

Mrs. Donna L. Schiff
Jan and Paul Labbe

Barbara Schilling
Mr. and Mrs. Robert W. Bloom

Lynn Scott
Mr. and Mrs. Thomas B. Brush

Mary Scott
Mrs. Judith M. Egeler

Ronald Sides
Mrs. Alison Morton

Beryl Skrocki
JoAnne Beare
Theresa Bethea
Mike and Mindy Binsfeld
Cottonseed
David Diller and Laurel Voran
Margaret Dye
Sabrina Garland
Meredith and William Goodrick
Mr. and Mrs. Jeff Hennig
Judith & Richard Hitz
Barbara Maxwell
Mr. and Mrs. Kevin J. McCarty
John Murphey & Marcie Meditch
Diana and Marc Oberschulte
Mary and Ben Phillips
Aaron, Ashley, Eve and Andreas Skrocki
Doug and Sherry Slessman
Daniel Snyder and Ann Rich
Lea Ann Sterling
Tom & Chris Tooley
Darby Trapp Eland
Don and Carol Vanderberg Cunningham
Mark Waddle
David and Meg Walton
Donna Weitz & Bill Smith

Douglas H. Smith
The Greig Family
Mrs. Nanette O'Connor

Kathleen Smith
David Alpers

Colleen Christensen
Mr. and Mrs. John A. Laubhan
Mr. and Mrs. Frank L. Padella
Don & Gaye Terwillegar
The Apollo Team

David Spencer
Grand Traverse Area Catholic Schools
Nadine and Daryl Slowinski
Karen Spencer

Mrs. Florence G. Spruit
Lauren Bertelson

Fred and Joyce Stackable
Carol Gabel
Dorothy Runyon

Terry Stanton
Cathleen C. Fisher



Ms. Cheryl Stearns
Mike and Marie Stearns

David L. Sterling
Lea Ann Sterling

Donald Stuhldreher
Mindy Greene
Julia (Gia) Suhajda
Janice Suhajda

John Sweet
Mr. and Mrs. Larry Brubaker
Christiane French

Marni Sweet
Mr. and Mrs. Larry Brubaker

Millie and Herb Taglauer
The Taglauer Cabin

Tad and Jane Thoburn
James Thoburn

Mac and Ruth Thomas
Paul and Melisse Anderson

Paul Thompson
Jane T. Babbitt

Thomas Triick
Eric Bassett

Norman Ueno
Merilyn Ueno and Doug Zernow

Sally Van Otteren
Tim & Laurie Daum
Richard & Karen Harrison
Frank Kerker
Phil Maynard
Madalyn Meldrim and Family
April Powell

Helen Westveer and Family
Bill Wiersma

Catherine Varley
Dennis and Kathy Turner

Robert Walsh
Tim Lilleboe
Patricia Walsh and Fred Ruppert
Joseph Woodford

Elizabeth and James Ware
Priscilla Ware

John Watkins
Anne F. Adams
Mrs. Judith M. Egeler
Molly Grogan
Mr. and Mrs. Peter Miller
Steve and Amelia Moore

Reinhard Westphal
Mr. and Mrs. P. James Bernardo
Birchwood Shores Preservation
Assoc.
Allen & Jane Damschroder
Nancy R. and Berkley W. Duck
David Edelstein & Jennie Berkson
Rick Grauer
Jeff and Susan Green
Mark and Lynne Lyons
Phil and Denise Swy

Mr. Maynard C. Wheeler, Jr.
Mrs. Lena A. Ball

Hilbert & Antionette Wiedenkeller
Kathleen Dolson and Christopher Spilling
John and Lyn Dolson Pugh
Jeanne Dolson and Michael Yocum

Nancy Williams
Marion and Gene Cartwright
Elaine Grever
Mr. and Mrs. Richard D. Oliver

Kenneth Willis
Mr. and Mrs. Scott E. Earl

Joan Witter
Jane and Gordon C. Spink

Gary Woodworth
Marilee Woodworth

Hilda Marie Zierk
Melanie Koskamp and Maria Zierk

Beth Zinman
Mr. M. Richard Zinman

Alyssa Marie Zino
Mary Robertson

Memorials & Honorariums cont.

Honorariums

January 1- December 31, 2022

Thank you for your gifts made in honor of the names shown in bold.

Anne Adams and Phil Atwood
Mr. and Mrs. Harry J. Finke, IV

Beth and Westy Adams
Mrs. Janet H. Kelley

Mr. and Mrs. Weston W. Adams, Jr.
Mrs. Janet H. Kelley

Ann Alpern
Mary & Joseph Duchi

Ruth Arents
Adam and Mary Arents

Autumn Benner
Amy Benner and Dominic Maceri

Dana Benner
Amy Benner and Dominic Maceri

Lark Berens Hall
Bryan Morrison

Juliet Berkshire
Ashley Erdely

Bethany Betzler and Patrick Ong
Mr. and Mrs. Richard A. Rossman

Robert Bienz
Mrs. Nancy Eaton

Kathleen and John Birney
Mrs. Greta Solomonson

Dr. Joanne Blum’s Retirement
Eric and Carol Blum

Leland ‘Mac’ Bolak
Mr. and Mrs. Robert A. Bolak

Zack Bolak
Mr. and Mrs. Robert A. Bolak

Jim & Mavis Bottenhorn
Peter Bottenhorn

William and Shirley Bricker
William H. Stephenson

Mrs. Cheri W. Buchbinder
Wen Piotrowski

The Buell Family
Mrs. Eleanor B. Stephenson

Hy and Nancy Bunn Family
Mrs. Janet H. Kelley

Keith W. Burnham’s 90th Birthday
Jim Burnham

Pamela Butler
Matthew and Supapan Butler

Chuck and Susan Cady
Gina and John Erb

Gayle L. Carpenter
Mary E. Jellema

Mr. and Mrs. Jack L. Carpenter Family
Tammy Carpenter and Scott Hebert

Cathryn Carter and Cindy Winiarski
Lynne Wright & Marci Fishman

Betty C. Clarke
Mr. and Mrs. Bruce D. Lang

Paul and Patty Cobb
Mary Cobb and Peter Rouseelot

Scott Cole
Jennifer Tolle Whiteside

Mr. and Mrs. Edward J. Collins
Mrs. Anne W. Kelly

Vicki Cox Vogt
Mr. and Mrs. Gary McCausland

Molly and John Crabb
Dorothy McGavran

Lauren Dayton & Dan Rooner’s Wedding
Susanne Dayton
Berit Ingersoll-Dayton

John Duchi and Emily Roberts
Mary and Joe Duchi

Joseph Duchi
Mary Duchi

Karen Kirt
Todd and Amanda Johnson

Ron and Angela Fessler
Mrs. Greta Solomonson

Chip and Wendy Finke
Anne F. Adams
Heidi Fisher
Herbert Cleveland

Linda Guse
Dale Guse

James and Joy Ham
David A. Ham

Tate Hanawalt
Robert S. & Thelma C. Boles

Mr. and Mrs. Edward C. Hanpeter
Christopher Prisby Family

Joan Hanpeter
Julia Prisby

Judith Case & Karl Hausler
Village Voices

Jean Hawn
Darcy Hawn

Matt Heiman
Inland Seas Education Association

Joe and Terri Hoog
Adam Hoog

T. Michael and Joan Jackson
Mr. and Mrs. John P. Jackson

Mary E. Jellema
Gayle L. Carpenter

Jennifer and Greg Johnstone
Tammi Messersmith

Jennifer Johnstone’s Birthday
Barbara Shanahan

Chris Kelley and Anne Maglione
Mrs. Janet H. Kelley

Mrs. Janet H. Kelley
Mr. and Mrs. Weston W. Adams, Jr.

Alisann and Chuck Kepler
Mark and Susanne Schneider

Don Kiessel and Ed Keissel
David and Roberta Williams

Chris Killman
Kathleen and John Birney

Marian Kromkowski
Suzanne Landes

Mike and Lori Kwolek
Mr. and Mrs. Edward Beuerle

Neal Little and Eva Feldman Family
Alissa Kane

Elizabeth and Ernest MacDonald
Ben, Lora, and Charlie Gerould

Gayle Madison
Don and Doni Lystra

Sheila Marcus
Helen Morgan

Karen C. Martin
Mr. and Mrs. Pete Kohrs

Erin McClain and Family
Amy Benner and Dominic Maceri

Janice McCrea-Turosky
Steven, Anna, and Nick

Shannon McFarland
Sherwood Smith

Ann McInnis
Ed McInnis
John McInnis
Village Voices

Doug McInnis
Ed McInnis
John McInnis

Kristi McKenzie and Frank Sellgren
Mr. and Mrs. Matthew N. McKenzie

Louise and Ken Medaris
Mary Cobb and Peter Rouseelot

Marshall D. Mesecar
Douglas B. Mesecar

Susan Muenzer and Craig Nilsson
Barbara M. Taylor

Chris and Randy Nelson’s 50th Anniversary
Sandra Howe

Tom Nelson and Stephanie Berger
Elizabeth Ward

Carolyn Rawsthorne
Larry Rawsthorne

Lynnette J. Rhodes
Mr. and Mrs. J. Carl Ganter

Mrs. Paula M. Robertson
Mr. and Mrs. Stephen W. Knoll

Kama Ross’s Birthday

Richard Rotramel
Zack Christian-Rotramel

Mr. and Mrs. John J. Schaffer
Kathleen and John Birney
Mrs. Greta Solomonson

Bobbie S. Poor’s 90th Birthday
Tim Poor

Mrs. Greta Solomonson
Kathleen and John Birney

Kris Solomonson
Mrs. Greta Solomonson

Sophia Solomonson
Mrs. Greta Solomonson

William Solomonson
Mrs. Greta Solomonson

Nancy Steel
William and Adwoa Steel

Peter C. Stoll & Christine Yannone
Jennifer Tolle Whiteside

Vik and Susan Theiss
Nancy Schwab

Jane Fraser Thoburn
James Thoburn

Luella M. and John K. Van Raalte
Gerald & Elizabeth Clark

Tom and Alice Van Zoeren
Al and Karen Gallup
Mr. Eli S. Van Zoeren

Deborah Joy Vander’s Birthday
Lauren Rickman

A.C. & Melanie VanderKolk
Mary E. Jellema

Mrs. Sally Viskochil
Joe & Kathy Cooney

Mr. and Mrs. Christopher C. Walker
Mrs. Janet H. Kelley

Mrs. Taffy Walker
Mrs. Janet H. Kelley

John & Shara Wallace
Mrs. Greta Solomonson

Tim Wallington
John Wallington

Carol L. Waters
Karen Hague

Mary Cusick and David Wible
Doug and Julie Frazier

Mr. and Mrs. John R. Williams
Katie Melvin
Kimberly Melvin

Norm & Helen Wisneski
Sue Wisneski

Margie Yaker
Elaine C. Driker



Leelanau Conservancy
105 North First Street
P. O. Box 1007
Leland, MI 49654
231-256-9665
info@leelanauconservancy.org
www.leelanauconservancy.org

Non-Profit
Organization
U.S. Postage
PAID
Traverse City, MI
Permit No. 29

BOARD OF DIRECTORS

Edward & Barbara Collins,
Founders

Amy Tennis **Board Chair**
Cammie Buehler **President**
Kathy Garthe **Vice President**
Susan Green **Vice President**
Bill Witler **Treasurer**
Alison Horton **Secretary**

Mary Cusick
Gina Erb
Rick Gans
Art Kubert
Cam Lanphier
Nick Loud
Pamela Lysaght
Steve Martineau
Roger Newton
Jim Nugent
Mike O'Donnell
Nancy Popa
David Schimmel



STAFF

Executive Director
Thomas Nelson

Finance & Administration
Kathy Birney
Molly Crimmins

Charitable Giving
Paris Morse
Stacie Longwell Sadowski
Sara Michael
Gayle Egeler

Communications
Claire Wood
Brigid Driscoll

Land Protection
Matt Heiman
Kim Hayes

Stewardship
Becky Hill
Emily Douglas
Caleb Garone
Chase Heise
Chad Jordan
Katelyn Maylee

Volunteers and Events
Lindy Kellogg

AmeriCorps Members
Suzanne Bessette
Emma Cianek



Photo by Sheen Watkins

At the Leelanau Conservancy, we believe the outdoors is for everyone. We strive to honor and celebrate our community's diversity through our work. Our mission to conserve the lands and waters of Leelanau County can only be realized through a steadfast commitment to diversity, equity, and inclusion in conservation and stewardship and in our relationships and business practices. We recognize and celebrate that the well-

being of nature and people cannot be separated. The Conservancy commits to including, supporting, valuing, and welcoming all people with whom we work and serve, now and in the future. By including all people in conservation regardless of culture, race, class, ethnicity, sexual orientation, gender identity, abilities, or age, we can help shape a more inclusive, more equitable, and more vibrant future for Leelanau.