



There's No Place Like Leelanau

*Conserving the Land, Water and
Scenic Character of Leelanau County*
2017 Annual Report/
Spring 2018 Newsletter: Vol. 20, No. 1

From the Director

"We will not fight to save what we do not love."

—Scientist and Author Stephen Jay Gould

When people ask me about the successes of the Leelanau Conservancy, the conversation quickly turns to the power of love. This organization has been blessed with visionary founders and passionate leaders, committed staff and board members, and dedicated volunteers. But, there's a sobering truth that carries with it a deep sense of humility—it is your love of Leelanau that's the reason the Conservancy can keep on doing what it does. Because of you, families can continue to celebrate together that Leelanau's waters are still pristine, its forests are still green, and its farms are still resplendent at harvest time.

But what of the times to come? Will the next generation love Leelanau as much as we do? Where will Leelanau's supporters and defenders of the future come from? As you might expect, your Conservancy is working on it.

The good news is that there's plenty of evidence young people still yearn to experience, appreciate and enjoy places that continue to hold their beauty and ecological integrity. At the same time, we're learning that the coming generations often want to experience nature differently.

Fortunately for us, we don't have to go very far to hear what younger people care about. Five members of our staff—Sara, Emily, Becky, Claire and Chase—are in their 20s and 30s. They and their peers are helping us find the answers. Active outdoor recreational opportunities are very meaningful to them. Often, they enjoy these experiences in groups, because it connects them with each other and their love of the natural world. How fortunate that we possess a profound understanding of how our peninsula's lands and waters connect us to each other and nourish us.

For more than a year, the Conservancy's staff and board have been examining our best opportunities

to offer the kind of active outdoor experience that will attract the conservation leaders of tomorrow. We are thrilled to announce we will offer the first public mountain bike trail in Leelanau County at our Palmer Woods Forest Reserve. Palmer Woods is already a popular Leelanau destination for hiking, cross-country skiing and snowshoeing, and we anticipate the work on mountain bike trails to commence later this year.

When complete, sustainable mountain bike trails will be separate from hiking and ski trails. If all goes as planned, by the end of 2019 Palmer Woods will include 6.8 miles of hiking and groomed cross-country ski trails and 5.5 miles of mountain bike trails. By 2021, we expect Palmer Woods to have over nine miles of hiking and skiing trails and over 15 miles of mountain biking trails.

Research shows spending time outdoors on trails improves people's quality of life, and young families want to live in places with family-friendly recreational opportunities close to home. We look forward to getting to know the conservation champions of the future as we begin expanding the trail system at Palmer Woods.

As important, we're providing one more reason to love this incomparable place on Earth. We're offering yet another opportunity for people to connect with the peninsula and each other—and that's one of our best insurance policies to ensure that the Leelanau so many generations have cherished will forever endure.



Thomas Nelson
Executive Director

P.S. Are you new to mountain biking? Don't miss the opportunity to try it out on April 21st during Earth Week. We are partnering with Bike Leelanau at 45 North Winery's trail to lead a guided ride.

"By the end of 2019, Palmer Woods will include 6.8 miles of hiking and groomed cross-country ski trails and 5.5 miles of mountain bike trails."



Chairman's Message: A Personal Conservation Ethic

Like you, I love Leelanau. We've traveled a good bit, but Linda and I chose Leelanau for our part-time residence over 30 years ago, and it's where we have lived full time since 2010. It simply feels great to be here, and it still seems new.

But why Leelanau? What, exactly, are the sources of our feelings and our dedication to conserving this place?

I got some insight into the sources of my love for Leelanau and my conservation ethic through an exercise during an educational session at the 2017 Land Trust Alliance Rally in Denver. We were asked to turn to the person sitting next to us and in 60 seconds describe why we were committed to conservation. It was easy to do, and I immediately offered a number of logical, science-based reasons, such as preserving biodiversity, protecting important watersheds, etc. Then, we were asked to do it again, but this time make it personal—dig deeper, for the things that were unique to each of us. This took a few moments of reflection, and it's where the exercise paid off. Here are the first two things that came to mind.

I grew up in a small town on the shore of Lake Erie, west of Cleveland. We lived near the edge of town, and it was easy to get to a wooded area just outside the city limits. I have no idea who owned it, but that's where my friends and I spent a lot of our free time. I can still remember doing "civil engineering" projects trying to dam the small creek, tracking animals, and watching birds that weren't seen in the city. These woods were our default location for fun, year-round.

For probably ten years running, my parents

would take our family up to a lodge on a small lake about 100 miles north of Toronto for our summer vacation. This covered the period from when I was probably 5 years old until I was 15. It was an old, wooden lodge, that was accessible only by a two-track over some rugged terrain. Our heavily loaded car often bottomed out getting there and, once there, we stayed put. I have many vivid memories of the place, including the "Kodachrome" air, the dark skies, the clear and very cool water of the lake, and the coniferous forest. That's where I first encountered the wonderful scent of pine straw in the woods on a warm, sunny day.

I didn't realize it at the time, but I now know that the north, in a very pure sense, was being imprinted in me by these youthful experiences. That's why I need to be up here, and why it's important to me to preserve Leelanau for future generations. Southern Michigan is wonderful, but it isn't Leelanau.

Dig deep, and make it personal—what's your reason for being up here, and being involved? I'd love to hear your story the next time we meet.

Ed Ketterer
Board Chairman



Photo of a Jack-in-the-pulpit and cover photo of marsh marigolds at Belanger Creek Preserve by Ken Scott; always a sign that spring has arrived.

*We appreciate Ken's generosity in loaning his beautiful images
(see more at kenscottphotography.com).*

If you have a great shot, send it to us: info@leelanauconservancy.org.



26
Natural
Areas

15 Miles of Hiking Trails



300+
volunteers



18
Years
of

Wildflower Rescue



25
Docents
Leading

500 People
a Year on Hikes

5,000+ Acres of
Working Farmland



Forever Protected

We've Spent

30
Years

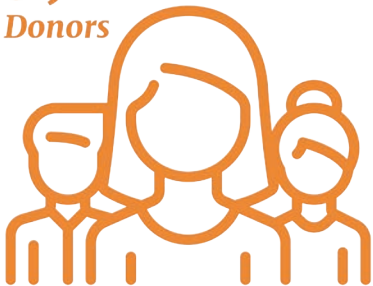
Protecting Leelanau



170--
Private
Property

Conservation
Easements

3,500
Donors



46 Miles of Protected



Lakeshore, Streams, and Rivers

18 Natural Areas



With Deer Hunting by Permit

25 Years
Monitoring
the Water
Quality of



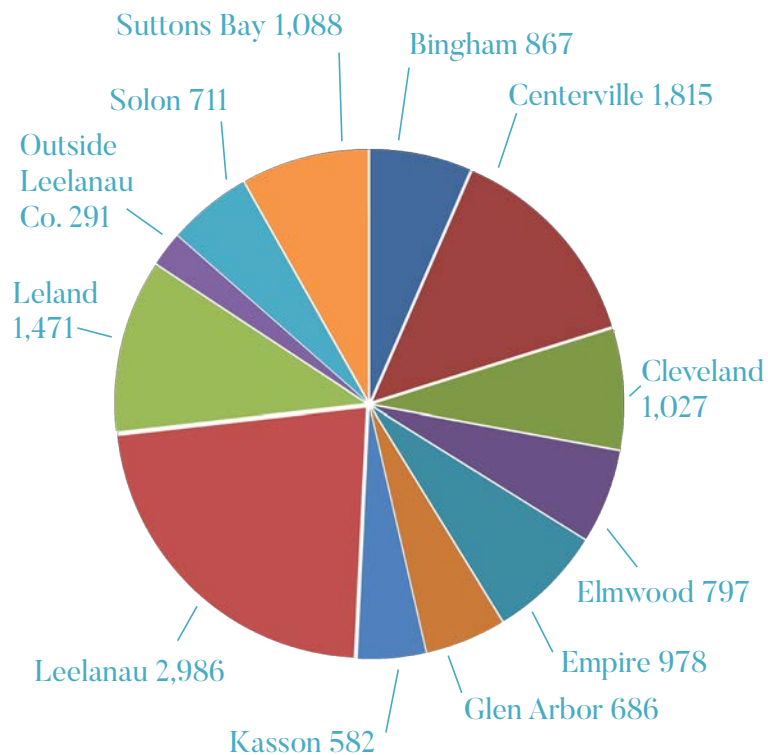
Our Lakes and Streams

13,000+
Acres

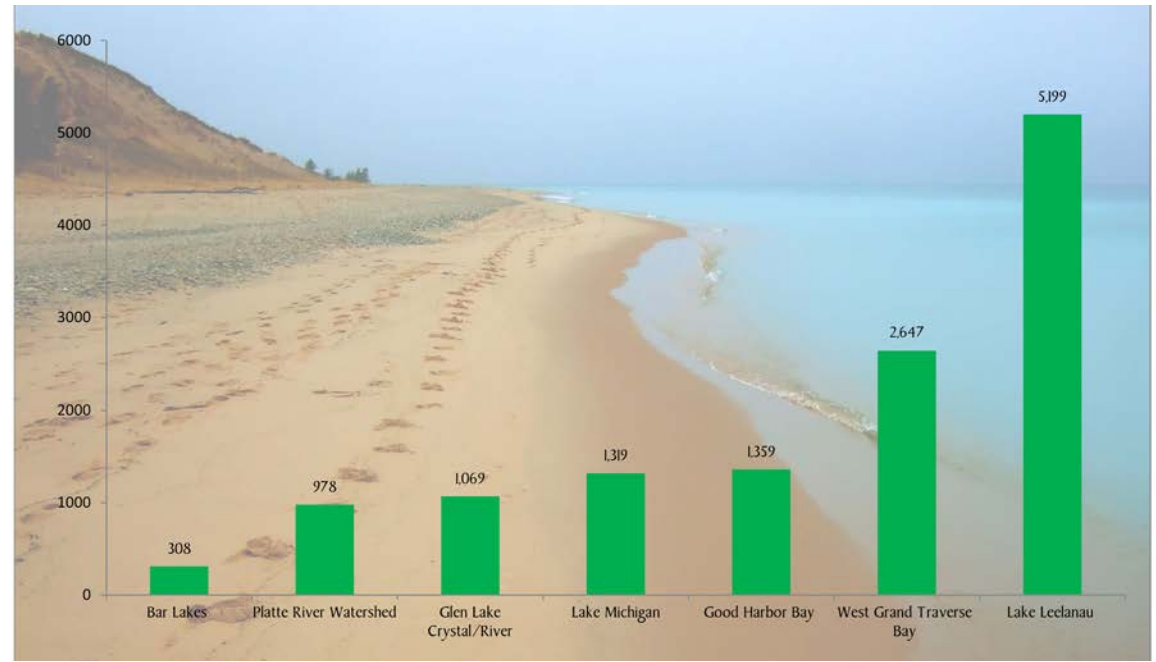


Preserved Since 1988

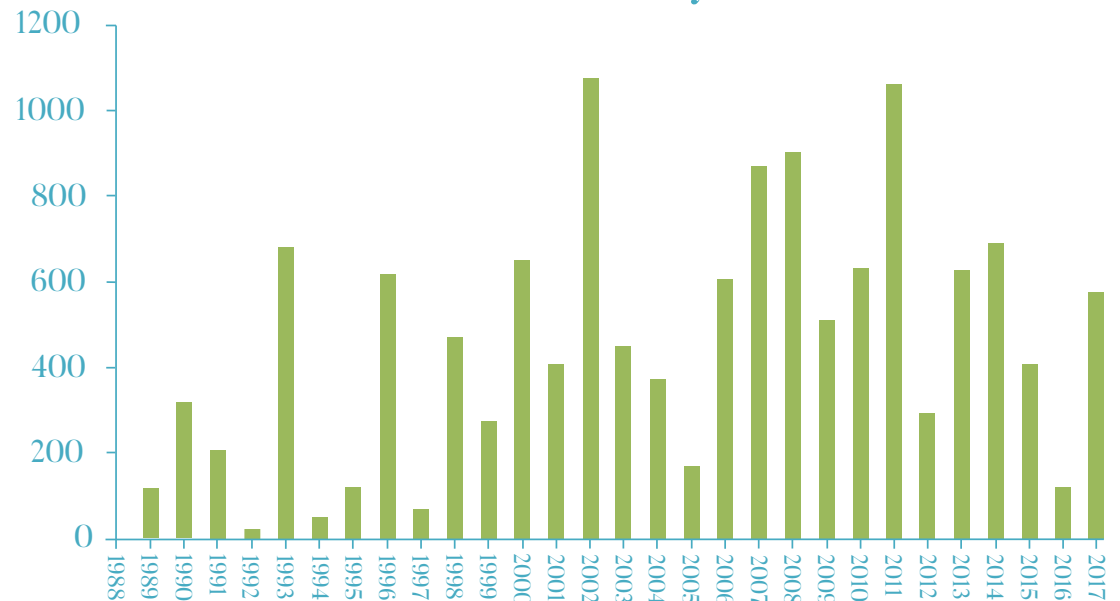
Acres Protected by Township



Acres Protected by Watershed



Acres Protected by Year



"It's hard to put into
words what it means for me to
spend time here."
-Paul Dechow

Bohemian Valley

Dechow Family Preserves 105 Acres



Dr. Paul Dechow takes his family history very seriously. His relatives bear the names of some of the county's earliest European settlers: Shalda and Basch, Kelderhouse and Kessel—one of the founding families of North Unity. In fact his great-great grandfather, Friederich Dechow, in 1857 purchased the land known as the iconic Dechow farm along M22. It is now part of the Sleeping Bear Dunes National Lakeshore.

Over the Christmas holiday, sitting in their living room that overlooks the Bohemian Valley, Paul and his wife, Joanne, talk about their own Leelanau history. Son Ian, 24, listens to his parents speak about how they came to own this land, and what inspired them to donate a conservation easement that will forever protect their 105 acres in the valley.

"It's hard to put into words what it means for me to spend time here," says Paul, gazing off toward the distant ridgeline. "This has always been home, and it was for my parents as well, who met at St. Paul's church in Good Harbor." Paul, the youngest of four, was born in Battle Creek, where his father had taken a job as a school principal in the 1950s. But Leelanau was always home, and the family came north at every opportunity to a small house on Wheeler Road that Paul's father built in the 1930s. Paul recalls many trips to Leelanau, filled with hiking and hunting in the woods, fishing for pike on School Lake, and visiting many offshoots of his large and extended family.

"I was related to just about everyone I met," adds Paul, noting that his great grandfather had over 80 grandchildren and 200 great-grandchildren, including Paul. Joanne was raised in Baltimore and fell in love with Leelanau on her first visit with Paul in summer, 1972. Today the couple lives in Dallas, where Paul is Associate Dean of Academic Affairs at Texas A & M University College of Dentistry. Joanne is an oncologist who specializes in breast cancer treatment and genetic counseling. They continue to visit their home in Leelanau at every opportunity.

They purchased the land at auction in 1985, originally settled by Paul's great-great uncle, Frank Shalda. The Dechows were newly married and living in Ann Arbor.

Joanne was in the midst of her residency; Paul was doing research and teaching at the University of Michigan in a post doctorate position. They had \$2,000 in the bank and withdrew every penny for a down payment. It would be 10 more years before they could afford to build the house.

Their now-protected land borders the national park and would be a prime spot for development. It takes in five acres of wetlands important to the health of Good Harbor Bay as well as agricultural areas Paul hopes to revitalize. We head out to snowshoe around the property, where Paul says he sees deer and turkeys regularly; bobcat, coyotes and bear on occasion. On a recent walk, he flushed 20 grouse.

The family is dedicated to caring for their land. "It was a mess when we bought it," says Paul. There were 20 junk cars and 130 tires to dispose of. In a small old farmhouse on the property, where Paul's cousin had lived, they found moth-eaten furs drying in the attic and 200 quarts of preserves from the 1950s in the basement. Paul dreams of improving and repurposing the house and maybe even a nearby outhouse, now covered in vines.

Ian and his sister, Monica, annually posed for photographs by the outhouse to document their growth. We pass a rusting threshing machine; Paul recalls it was his job to hold the burlap sacks as the grain poured in. Back in the house, we visit the basement where he shows off a wardrobe used by his ancestors; at one time it would have held all the clothing for a family of 12. Paul has restored it and cherishes items like these—as well as the thousands of photographs he has collected—that detail the family's history.

Paul's fascination with the past was sparked early on by listening to his great aunt, Olive Dechow Mannes, tell stories over big family dinners. He has since assembled a book that meticulously documents his ancestors' place in Leelanau. Every year he shares stories and photos at the Dechow Farm during the Port Oneida Fair.

Paul and Joanne have long wanted to protect their land and now was the right time. "Our salaries are at their peak so the timing was financial in terms of tax advantages, but that's not why we did it," says Paul. In a few years they plan to retire and spend more time in Leelanau.

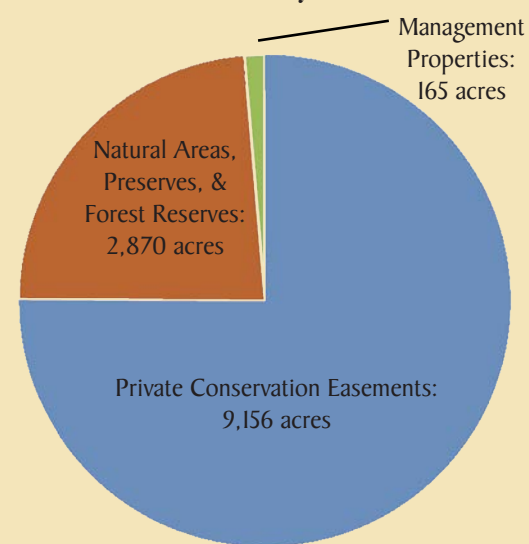
"Our main motive was to keep the land in its original state, for future generations," says Joanne. "We really didn't want to see it developed." — Carolyn Faught

Family photo (left): Paul's great great-grandfather, Friederich Dechow, with his third wife, Friederike Bollnitz Dechow, and son Charles. It was taken around 1865, when the Dechows had been in Port Oneida for 8 yrs.

Why We Protect Private Lands

The Conservancy has worked with 170 landowners like the Dechows to protect cherished family lands and we all reap the benefit. These places help to protect clean water, spectacular roadside views and wildlife habitat. When you are driving around Leelanau County, you may not even realize the landscape you love will always stay that way. Did you know that over two thirds of the lands we have permanently protected since 1988 remain in private hands and stay on the tax rolls? Over 9,000 acres of working farmland and private natural lands are forever preserved with conservation easements. Read more landowner stories on our website.

Leelanau Conservancy Protected Land



Iconic 190-Acre Omena Farm Preserved

Having moved to Omena over 30 years ago, the Putnam farm just up the road from where I live is a place I have long worried might turn into a subdivision. I have walked or driven past the farm's rolling valley and iconic barn hundreds of times. Every time I do, I am so grateful that the cherry trees Rennie Putnam planted still stand, and the farm still looks like it might have a century ago.

So it goes without saying that like so many people who love this farm, I am overjoyed to know that 190 acres here are now forever protected, thanks to the heirs of my once-upon-a-time neighbors, Rennie and Esther Putnam. The couple passed away over a decade ago; since then their children have worked with the Leelanau Conservancy to protect the farm. It is now part of a larger block of protected lands adjacent or nearby, including Frazier Freeland Preserve, Saving Birds Thru Habitat's Charter Sanctuary and private protected lands along Belanger Creek.

I met with Fred Putnam, Rennie's son, who has been the point person for his family, and later chatted with his sisters, Doris Gilbert and Mildred Connell. The family has sold a conservation easement on the property, which restricts development and lowers the land's value so that it remains affordable for other farmers.

On a tour in Fred's truck, he pointed out the property line; a row of pine trees Rennie planted, and talked about his father's upbringing. Born on the farm in 1916, Rennie was the youngest of five. His father died five years later. Rennie's mother, Anna, his siblings and nearby relatives kept the farm going. They plowed with horses and planted some of the first fruit in the area.

A Depression bank failure in 1929 wiped out Anna's \$5,000 savings, but the family soldiered on. "They owned the farm and between the cattle and pigs and a huge garden, they could feed themselves," said Fred, adding that for as long as he could remember, his parents shared

garden produce with those less fortunate.

In 1934, when Rennie turned 18, he bought the then 180-acre farm from his mother. Rennie's siblings "had had enough of farm life," said Fred. Brother John owned a gas station and bar in Omena, known today as Knot Just a Bar. Harold, the oldest, became a career army officer. Rennie's sisters married and moved on.

But Rennie loved everything about the farm. To make ends meet, he worked as a carpenter, tending to farm chores at daybreak and in the evening. He married Esther, Fred's mother, when he was 27. She had also grown up poor and worked hard. "They were incredibly frugal,

tracking every penny that came and went, but at the same time we never wanted for anything," said Fred's sister, Mildred. Fred recalled his mother putting patches on his father's clothing long after they could afford to buy new. Growing up in the Depression affected his parents for a lifetime, said Fred.

Mildred said it wasn't until she was in high school that she realized just how hard her dad worked. "I came home from a

babysitting job around 4 am and he was just beginning his day. I realized he did that every day," said Mildred.

The siblings have fond memories of growing up on the farm, which eventually grew to 260 acres. Mildred recalled clearing the fields of rocks in the spring with her family, which "made it more fun than work." They planted pine trees with their dad, and canned pickles with their mom. After chores, Rennie often played hide and seek with them in the barn. "We never found him once," said Doris. Rennie would climb inside the sprayer to hide, or squeeze outside through a loose board and stand on the shed roof.

In addition to cherries, Rennie grew feed for the cattle and pigs he took to market. "He was a general farmer," Fred explained. "If cherries had a bad year, he had other



Rennie and Esther Putnam in front of the home they built in the early 1950's. Photo by Doris Gilbert

ways to make money.” Like his sisters, Fred said that the values his parents taught him, from thrift to hard work to charity, have guided his own life.

Now retired after a career downstate in operations management, Fred spends weeks in Omena, lovingly caring for the barn built by his grandfather. He has re-glazed windows and restored a 1949 tractor. Fred might have taken over the farm but said a unique opportunity to work for publisher R.L. Polk & Co. sent him in a different direction. “I saw myself in the business world and although Dad made a good living, there really wasn’t



Photo by Eric Munson

enough here to support two families.”

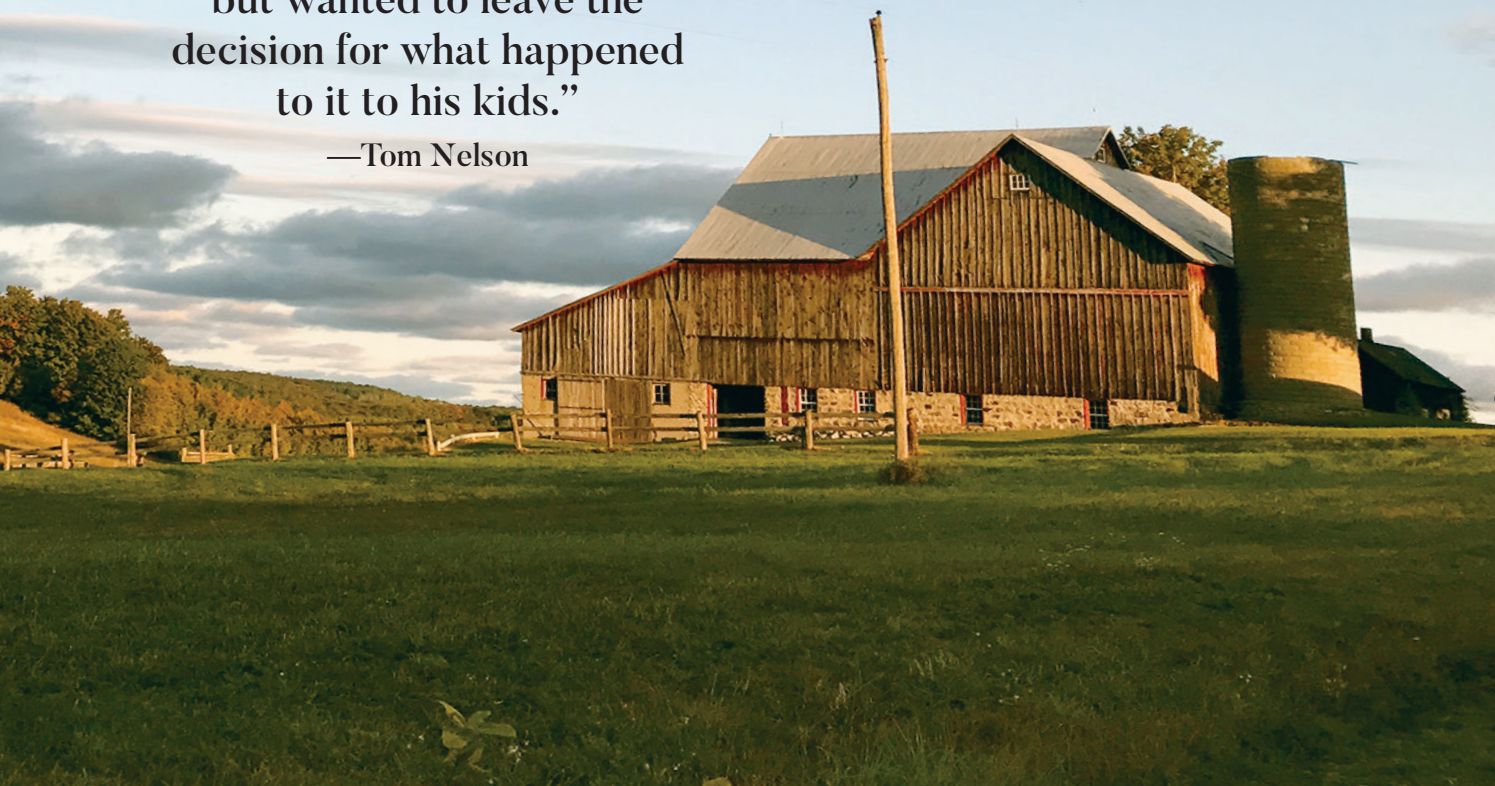
The trees Rennie planted are now tended by Cherry Bay Orchards under a lease agreement. Part of the protected land borders our Belanger Creek Preserve. Over a decade ago, Rennie sat down with now-Executive Director Tom Nelson to learn about the Conservancy and his options. “Rennie loved the farm, but wanted to leave the decision for what happened to it to his kids,” said Tom. A few years later, Fred and Tom met around the same kitchen table. “Fred clearly revered his parents and the farm,” added Tom.

The Conservancy applied for federal funds to move the project forward, but the first attempt failed. “It’s a

Story continued on page 22...

**“Rennie loved the farm,
but wanted to leave the
decision for what happened
to it to his kids.”**


—Tom Nelson



Once used for cultivating row crops, this 1949 Oliver tractor sat for years gathering dust. Fred got it running and restored it. Fun fact: the tires each hold 40 gallons of calcium chloride (which won’t freeze) for added weight to help with traction.



The 10-acre home and farmstead complex including the late 1800s barn is not part of the conservation easement. At some point, it will be sold to a lucky buyer. The siblings spent their earliest years in the original cedar shake house nearby, which had no indoor plumbing, and recall their mom heating water for baths in a washtub on the woodstove. “The cleanest one got to go first,” recalls Mildred. Rennie and Esther built the newer yellow house, moving in in 1952, when Fred was seven.



“Certain things are
worth saving.”

- Brandt Waldenmyer

United in Desire to Protect Fragile Hatlem Creek

For everyone who loves Glen Lake and its clean, azure waters, here's some great news. A close-knit family with a passion for the lake has sold 32 acres, including 1,400 feet of frontage along fragile Hatlem Creek, to the Leelanau Conservancy. The land will be added to our lovely Hatlem Creek Preserve, increasing it to a total of 72 acres, and will help to ensure Glen Lake's pristine water quality forever.

That's because Hatlem Creek and the sensitive wetlands surrounding it provide an important source of fresh water to Glen Lake; in fact it is the lake's main tributary. The federally endangered Michigan Monkey Flower grows on the property, thriving in wet, mucky soils where cool waters flow. Hatlem Creek is also a wildlife haven; state-threatened red-shouldered hawks nest in the closed forest canopy and trout and salmon spawn in the stream.

Gordon and Jann Waldenmyer overlook the now protected land from their log home, built in 1996, and they retain several acres adjacent to the Preserve. The family's ties to Glen Lake go back to Jann's parents, who discovered the area in the late 1920s after being invited up by a friend. They purchased Sunset Cottage from the Vlack family in 1947 and Jann and her sister spent summers on the lake. Later, she and Gordon brought their children north from Ypsilanti for vacations. Son Brandt was just six days old when his toes were first dipped into Big Glen; daughter Carrlin Neiss, who was born in the winter, had to wait six months as the cottage was not then compatible with Leelanau's winter winds.

The Waldenmyers, knowing they wanted to eventually make a permanent home near Glen Lake, found the land along Hatlem Creek in the 1980s and began plans to build. Meanwhile, Jann and her sister shared Sunset Cottage after her parents died, but ever-increasing taxes and advancing age led them to sell in the early 2000s.

Today, Brandt lives with his 80-something parents; Carrlin and her husband own a home and five acres adjacent. All of them revere the land, where they have seen bear lumbering about, otters sliding into the creek and big bucks nibbling on tree seedlings. Carrlin recalls seeing giant snapping turtles emerge from the swamp to dig holes in the sandy soil near her parents' home. The turtles laid their eggs; after hatching, baby turtles scooted back to the swamp. Brandt talks of hooting back and forth with the barred owls.

"Whether we stay in the house or not, we would never want to see the land get filled in and developed," says Brandt. "There's enough money out there that even the best of regulations are being circumvented and we simply didn't want to see that. Any sort of cutting of trees there would totally change the ecology. Certain things are worth saving."

Their parents say they contacted the Leelanau Conservancy after reading articles in the Leelanau Enterprise about other landowners who had protected land, including their late friend Glen Noonan. Gordon was wary at first; Jann was without reservations. But as they saw more and more land being developed, Gordon came around. "Man can't do what Mother Nature does, the way I look at it," he says.

Conservation Easement Program Manager Yarrow Brown, who worked with the family over the last few years, calls it a "feel good project for both the land and the people, and a piece of the bigger picture for land protection in the Hatlem Creek subwatershed." The Waldenmyer property adjoins protected land owned by the VanZoeren family, who graciously granted them an access easement they needed in order to meet county regulations to sell the Conservancy the property. "No matter what happens, the family will always be able to hike and enjoy the new preserve, as they always have."

"Jann and I imagined what could happen and that drove us, but we never would have sold it to anyone but the Leelanau Conservancy," says Gordon.



Above: Gordon and Jann Waldenmyer stand in front of the new addition that expands Hatlem Creek Preserve.

Opposite page: Cool and clean Hatlem Creek. Photo by Brandt Waldenmyer.

Top photo: A red-shoulder hawk builds a nest. Barred owls and many species of birds also call Hatlem Creek home. Photo by Alice VanZoeren

Hatlem Creek: Why it Matters

Hatlem Creek is the prime tributary flowing into Glen Lake. Protecting this fragile creek and the lands that surround it is critical to the health of the lake and watershed. It also is home to the endangered Michigan monkey-flower.

Increased construction along lakes and streams has destroyed monkey-flower habitat. Because the monkey-flower needs flowing spring water, road construction and other activities that affect water drainage also affect the species. Michigan monkey-flowers now survive at only 12 sites in Michigan. Two-thirds of the plants are on private property. Source: U.S. Fish and Wildlife Service.



Photo by Borealis Botanicals

An army of rent-a-goats will vacation at Clay Cliffs Natural Area starting in May, "conservation grazing" on the densest infestation of garlic mustard known to our properties along M-22. Photo by Amy McIntyre, City Girls Farm.



Stewardship Updates

We're excited for the upcoming field season and have much on our to-do list. Thanks to the Huron Pines AmeriCorps program, we will have three members this season to care for our lands. Andrea Hunt arrived in January and will serve as a crew leader, harnessing the power of our volunteers and making sure that their valuable time is rewarding.

Two other AmeriCorps members will start in May. "They'll hit the ground running," says Natural Areas and Preserves Manager Becky Hill, who, along with fellow staffers Emily Douglas and Claire Wood also served in AmeriCorps. "They will bring a passion and an energy that will increase our efficiency and our capacity. I can't wait!"



Photo by Phil Stinson

Let's Get to Work!

These are our most pressing projects coming up this field season:

Wage war on garlic mustard with goats and volunteers. Yes, goats! An army of rent-a-goats will vacation at Clay Cliffs starting in May, "conservation grazing" on the densest infestation along M-22. They will munch plants to the ground before they can produce billions of seeds. The goats will be corralled with a temporary solar-powered electric fence and will bed down on site. Staff and volunteers will be freed up to concentrate on areas where the plant is sparse, pulling to prevent further spreading. Join us at a workbee to see the goats in action!

Oversee the construction of a new 5-mile mountain biking trail at Palmer Woods. We expect to have a contractor selected to begin trailbuilding by spring and permanent signage going up this summer. Stay tuned for lots of exciting progress here this year!

Restore the trail at Whaleback. The steep grade of this trail has caused erosion over the years. Plans call for "water bars" to be installed, which directs runoff away from the trail.

Improve the Kehl Lake boardwalk and observation deck. High water has wreaked havoc on this old structure. Stay tuned and if you have carpentry skills, please get in touch!

Blaze a new trail at DeYoung Natural Area. Thanks to volunteers from Chemical Bank, we got a great start on this new figure-eight shaped trail.

Want to help in our stewardship efforts? See our workbee schedule or email Claire Wood: cwood@leelanauconservancy.org.



Stairway to Heaven

2017 saw the completion of a project we have long had on our to-do list—the construction of a stairway that provides better and safer access to the lovely Teichner Preserve. Land Steward Chase Heise was the “builder-in-chief,” with help from fellow staff and volunteers including his dad, Dr. Michael Schmitt and carpenter extraordinaire, Al Swiderski. Learn more about the project and see photos from start to finish on our website: just put “Teichner Stairs” into the search box.



Powering On!

The DeYoung Natural Area Farmstead was one of the first in the area to get electricity. But it didn't come via any power company. It is believed that around 1900, Henry Campbell installed a water wheel in this historic building, known as the Powerhouse. Campbell diverted a small stream so that it could be harnessed to push the waterwheel, which in turned powered small light bulbs and equipment. The Leelanau Conservancy has been in the process of restoring the building and putting in a new foundation. In January, with the new masonry in place, the Powerhouse was lowered back to safety. This year's next steps: repairing the structure and windows, and a fresh coat of paint.

Leelanau's Clean Water

“The one thing that binds us together and assures our economic vitality is water. If we lost our quality of water, or even if there was a perception of the loss of our quality of water, we would lose an enormous amount of our appeal. It would affect our property values, our lifestyle and our economy. What if we were to put together a group of people from all of the different organizations that have to do with water quality, determine a baseline of what is being done and then come up with a vision of how to ensure that future generations will enjoy the kind of water quality that we do?” — County Commissioner Bob Hawley at the very first “Leelanau Clean Water” (LCW) meeting in 2008

Photo by Maria Garcia Bulkley

Interestingly, when LCW was formed, the Leelanau Conservancy had already spent 15+ years monitoring and recording water quality on seven county lakes and their tributaries. Our work fit right in with the group's goals to protect water resources, to promote public awareness of issues that threaten our water, and to provide information so that the public could take part in decision-making. And so we have partnered with LCW and served on their board ever since.

Every summer, staff and volunteers collect samples which monitor elements such as phosphorus and nitrogen (both promote algae growth). The data is entered into a database housed on our website which shows trends over time. The Conservancy shares this data annually with the lake associations, universities and local groups including Leelanau's Board of Commissioners in the hopes that the data will impact decision making that helps rather than hurts our water quality.

In 2017, a student at Grand Valley State University analyzed 25 years of our data and issued a report. GVSU Professor Megan Woller-Skar (who also served as Leelanau Conservancy's Stewardship Director from 2001-2005) summarized the findings:

"Results showed the highest concentrations of nutrients in the early 1990s. Overall, it looks like there has been improvement in water quality (nutrients) since then. You would expect change over 25 years in any data set, and in this case we are doing better. However, we need to look at the system as a whole, not just the nutrient results."

"Depth matters: with increasing temperatures, shallower lakes warm sooner and stay warm for

a longer period of time. There were also trends noticed seasonally. Every lake shows higher levels of nutrients in the spring versus the summer or fall. Spring snow-melt likely causes increases in nutrients from non-point sources like run-off from farms, septic systems and manicured lawns. The warming trend, combined with increased human use, may cause algal blooms to increase."

Save the Date!
**Leelanau Clean Water -
Water Quality Consortium**
Wednesday, June 13

The Leelanau Conservancy is partnering with Leelanau Clean Water to host a Water Quality Consortium to showcase the water quality data collected in Leelanau County. Learn what it all means and how we can set county-wide goals to maintain and improve water quality in our five major watersheds. Please save the date for Wednesday, June 13, 2018 from 11-2 at the Leelanau School. More details to come.



Photo by John Gessner



Photo by David Tabion

We are grateful to
HP Foundation for a
\$10,000 grant to help
with the water quality
monitoring program.

What You Can Do to Protect Leelanau's Water

- Pump your septic system every three years
- Establish a buffer of plants between your home and the water to absorb runoff pollutants
- Don't fertilize your lawn; use lake water to irrigate
- Reduce E. Coli bacteria by not feeding waterfowl
- Clean up all the pet waste near water
- Haul leaves away from shore; don't rake them into water
- Power wash boats after leaving every water body to prevent spreading invasive species
- Dispose of motor oil, paint and household chemicals at hazardous waste collections: (call 231-256-9812)

Source: Leelanau Clean Water

Founders Society

The Founders Society recognizes those donors whose generous and long term support has resulted in cumulative lifetime giving of \$25,000 or more to the Leelanau Conservancy. Many of these individuals have also included us in their estate plans, which supports our future.

\$1 Million +

Anonymous (1 donor)
The Carls Foundation
Mr. and Mrs. William L. Fortune, Sr.
Miss Sally Reahard
Chris and Ann Stack

\$500,000 - \$999,999

Anonymous (1 donor)
Mr. and Mrs. Frank A. Bracken
Edmund F. and Virginia B. Ball
Foundation
Mrs. Ruth S. Fairchild
Mr. and Mrs. John W. Fisher
George & Mary Ellen Gotshall
Mr. and Mrs. John H. Hoagland
Mr. and Mrs. Eugene C. Miller
Clarence and Ruth Roy

\$250,000 - \$499,999

Anonymous (3 donors)
Andrew V. Kiselius Trust
Mr. and Mrs. Edmund F. Ball
Mario Batali and Susi Cahn
Rosemary R. Berardi and Carolyn R.
Zaleon
The Brookby Foundation
Richard and Carolyn Chormann
Mr. and Mrs. Edward J. Collins
David Edelstein & Jennie Berkson
Mr. and Mrs. William L. Elder
Esperance Family Foundation
Mr. and Mrs. William Y. Gard
George and Frances Ball Foundation
Enid and Rick Grauer
The Herbert H. & Grace A. Dow
Foundation
John T. and Shirley Hoagland
Mr. and Mrs. Addison Igleheart

Will and Joan Larson
Mariel Foundation
The Oleson Foundation
Dr. and Mrs. Daniel Palmer, MD
Mr. and Mrs. Dudley B. Smith, III
Mr. and Mrs. Warren H. Watkins
Ms. Margaret H. Watkins
Joan and Randy Woods

\$100,000 - \$249,999

Anonymous (5 donors)
Americana Foundation
Mr. and Mrs. John F. Ball
David M. and Cara V. Cassard
Cherry Republic
Mr. and Mrs. Howard M. Dean
Mr. and Mrs. Gilbert A. Deibel
Ms. Laura L. Deibel
Francie and John O. Downing
Gina and John Erb
Jeff and Nancy Fisher
Mrs. Sue Frank
Frey Foundation
Mr. and Mrs. John T. Hackett
Mr. William B. Hall
Mr. and Mrs. Ronald L. Jones
Mr. Michael J. Kane
Mr. and Mrs. Edward A. Ketterer
Lake Leelanau Lake Association
Mr. George Littell, Jr.
Mr. and Mrs. Steven Martineau
Larry Mawby and Lois Bahle
Craig A. and Nancy T. Miller
Mr. and Mrs. John D. Norris
Mrs. Rose Oudemolen
Philip S. Harper Foundation
Dr. James Rae & Arleen
Rakas-Mitchell Rae

Robert J. Trulaske Jr. Family
Foundation
Ms. Catharine P. Roberts
Mr. and Mrs. Gordon H. Robertson
Rotary Charities of Traverse City
Walter and Leslie Schmid
Mr. and Mrs. Richard Shuster
Ms. Martha A. Teichner
David and Sally Viskochil
Ms. Karen R. Viskochil
The Wadsworth Family
Andy and Elizabeth Walters
E. Perry and Laurel (Wolfe) Webb

\$50,000 - \$99,999

Anonymous (6 donors)
Barbara and Bill Alldredge
The Ashken Family
Mr. William Bachman
Jennifer Baker and Stephen Fishbein
Mrs. Martha B. Baker
Mr. and Mrs. Robert Biggs
Mrs. Alexander M. Bracken
Maureen and Emil Brolick
Mr. and Mrs. Ronald D. Brooks
Colin Gardner Foundation
Dellora A. & Lester J. Norris
Foundation
Jeanne and Bill Dennler
Mrs. Jane W. Domke
Cheryl Donakowski & Frank Misplon
Mr. Martin M. Easling
Mr. and Mrs. Bowman F. Elder
Mr. and Mrs. John W. Fisher, III
Ms. Julia M. Flowers
Mr. and Mrs. Richard A. Funke
Mr. and Mrs. James C. Ganter
Jan Garfinkle and Mike O'Donnell
Edward Gergosian & Susan Hoekenga

Mr. and Mrs. Robert Goff
Jeff and Susan Green
Mr. and Mrs. A. Grant Heidrich, III
Julie R. Weeks & Walter Hoegy
Mr. and Mrs. William J. Leugers, Jr.
Mr. and Mrs. George H. Littell
Mr. and Mrs. J. Michael Losh
Mrs. Mary E. Lyons
M22 LLC
Mahogany Foundation
Mrs. Diantha C. Naftali
Mr. and Mrs. Richard D. Oliver
Orion Foundation
Mr. and Mrs. Alvin Owsley
Thomas S. Porter
Porter Family Foundation
Max R. and Linda J. Proffitt
Bill & Julie Pumphrey
Mr. and Mrs. Ralph M. Reahard, Jr.
James and Gwendolyn Rich
The Ricord Family
Mr. and Mrs. Marvin C. Rorick
Mary Alice Schaff
Ms. Anne Schermerhorn
Mr. and Mrs. David T. Shelby
Anne Drackett Thomas
John and Mary Tris
Mr. Robert J. Trulaske, Jr.
W.K. Kellogg Foundation
Bruce and Betsy Wagner
Mr. George C. Weeks
Ben and Cindy Weese
Mrs. Shirley L. Wheatley
Elizabeth Bracken Wiese & Fred
Wiese
Mrs. Nancy P. Williams
Mr. and Mrs. Harold G. Wilson
Mr. and Mrs. Peter Wilson
Michael and Kathleen Wysocki

\$25,000 - \$49,999

Anonymous (21 donors)
Porter and Anita Abbott
Mr. and Mrs. George E. L. Barbee
Caroline F. Brady
Broadleaf Foundation
Trish and Rick Bryan
Barb and George Cochran
Richard Cooper & Jan Tennant
Michael and Susan Craig
Mrs. Treva N. DeJong
Dole Family Foundation
Mr. and Mrs. Michael L. Dow
Tom and Gretchen Dunfee
Joseph Faggan
Feather Foundation
William Fortune, Jr. & Joseph Blakley
Dr. Pam Fraker
Mr. and Mrs. James W. Frederick
Mrs. Lurah Gilbert
Robert H. and Nancy M. Giles
Mr. and Mrs. Norbert W. Gits
Dan and Magee Gordon
Mr. and Mrs. John M. Gordon
The Gordon J. Hammersley
Foundation
Grainger Matching Charitable Gifts
Program
Don and Ann Gregory
Ms. Ann Hall
Mr. William S. Harper
Molly M. Harrison
The Homestead
Rich and Beth Hoover
Omena Fund
Mr. and Mrs. David B. Howard
Mrs. Jeannette Hunt
J A Woollam Foundation
Mr. John Langdon

Jeff Later & Betsy Donahue
Dr. and Mrs. Michael G. Lockhart
Frank and Conchita Lockhart
Mary and Bill Loveless
Dr. and Mrs. R. William Lustig
David and Louise Lutton
Mr. and Mrs. John C. Manix
Mr. and Mrs. William F. Marsh
Patrick McCarthy, MD
Dr. and Mrs. Robert J. McElroy
Annabel and Robert Moore
Mrs. Gertrude M. Oliver
Dr. and Mr. Nels L. Olson
Dr. and Mrs. Patrick Oriel
Mr. and Mrs. Denis B. Pierce
Joshua Pokempner & Gretchen Gardner
June and Jerry Powley
Jim and Marie Preston
The Paul and Katy Rady Family
Ms. Betty V. Rhoades
Mr. and Mrs. Richard O. Ristine
Kati Rooney & Jim Hennessey
Chris Rowney and Siobhan Cafferty
Ms. Carolyn T. Russell
Mrs. Frances Petty Sargent
David and Lisa Schimmel
The Shelby Family
Mr. and Mrs. John P. Snedeker
Richard and Stacie Stephenson
Mrs. Louise Thomas
Tom Russell Charitable Foundation
Mr. and Mrs. G. Neil Tyler
Anne Miles Vaughan
Mr. and Mrs. Lawrence J. Verdier
Barbara W. Vilter
Mr. John B. Watkins
Dr. and Mrs. Robert L. Willard
Wayne and Sharon Workman

Richard O. Ristine Heritage Society

The Heritage Society recognizes donors who have shared in the mission of the Leelanau Conservancy by making a gift through a will, bequest, trust, annuity, insurance or other planned gift. This important group is helping to ensure the long-term financial capabilities of the Conservancy. If you would like information on this special giving circle or about making a planned gift, contact Leslee Spraggins at the Conservancy.

Anonymous (20)
Susan Ager and Larry Coppard
Barbara and William Alldredge
Christie L. and Bruce T. Alton

David and Jacqueline Amos
Gary and Christine Armbrecht
Harold S. & Jacqueline F. Baase
J. Sumner & Irene G. Bagby
David Bahr

Ken & Mary Balcom
Mr. and Mrs. Patrick J. Barry, Jr.
Dr. Nancy Craik Beights
& Mr. Stephen Robert Beights
Carl G. and Sara Lynn Benner

Dale and Joan Blount
Jim and Laura Brown
Mrs. Carol P. Burchfield
Chuck and Susan Cady
Kyle and Betsy Carr
Mr. William S. Casier
David M. and Cara V. Cassard
R. Weston Caughlan
Rev. and Mrs. Albert A. Chaffee
William J. Charlesworth
Jim and Kay Charter
John and Linda Cloud
Margie Coggins

Mr. and Mrs. Edward J. Collins
Marie Eleanor Coppa
Mr. and Mrs. John G. Davey
Mr. and Mrs. Gilbert A. Deibel
The Dennler Family
Cheryl Donakowski
Ms. Nancy L. Dotlo
Mrs. Karen Douma
Jim and Sharon Doyle
Roland and Diane Drayson
Nancy R. and Berkley W. Duck
Tom and Gretchen Dunfee
Jack and Leah Dunn

David Edelstein & Jennie Berkson
John and Gina Erb – Ambassadors
Erika and Dennis C. Ferguson
EJ and John Fitzpatrick
Courtney M. Font
Mr. and Mrs. Tom H. Fox
Dr. Pam Fraker
Ms. Judy L. Frederick
Douglas and Susan Freeman
Bob and Debbie Gilbert
Bob and Nancy Giles
Karin & Clarence Goodlein
Elizabeth and Richard Gotsch

A Generous Spirit

Michigan State University Professor Emeritus Pam Fraker has two passions when it comes to philanthropy. One is helping promising college students who are in need. The other is the mission of the Leelanau Conservancy.

First, the students. Pam has established a scholarship fund at MSU to help struggling students pursuing degrees in science. She holds the honor of being the first woman from MSU to be named to the National Academy of Sciences—one of the highest honors that a scientist or engineer can earn. In her pioneering work in biochemistry and molecular biology, Pam has focused her work on how malnutrition affects the immune system. But she might never have achieved all this had it not been for a scholarship from Purdue. Thus her choice to “pay it forward.”

Additionally, Pam has been known to pull out her checkbook to help struggling graduate students. When one of her most promising researchers said she would need to abandon her lab job for the summer in order to take a more lucrative waitress job, Pam wrote a check to cover the student's summer expenses.

Pam, who grew up in Indiana, discovered Leelanau about 15 years ago. Friends had invited her north one weekend. “I thought, gee, this is nice,” she says. Pam and her partner, Mary, began

renting in Northport and eventually bought a home on Suttons Bay. Now retired, they split their time between Leelanau and Okemos, where she continues to mentor students and write grants for the university.

Pam, who loves nature and the outdoors, discovered our natural areas and made her first donation in 2006. She loves to hike with her dogs; among her favorite places are Houdek Dunes, Swanson Preserve and most recently, Clay

“I came to the conclusion that if I give these people money, stuff happens.”

Cliffs “because it's so accessible.” “One day I walked into the office and people seemed nice. I kept giving a bit more each year. Gradually I realized you all were getting a lot done and it seemed like you had 50 people working there, but you didn't. ‘Do these people ever sleep,’ I wondered.”

In 2014 Pam joined the Richard O. Ristine Heritage Society* with a planned gift. “I came to the conclusion that if I give these people money, stuff happens,” says Pam. Her estate will be divided between the Leelanau Conservancy and the MSU scholarship fund that bears her name. In addition to hiking our natural areas, her favorite thing to do in Leelanau is to drive the back roads. “My blood pressure is always normal in Leelanau,” she says. “To me, it's just incredible up here—quiet and peaceful.”

**The Heritage Society recognizes donors who have shared in the mission of the Leelanau Conservancy by making a gift through a will, bequest, trust, annuity, insurance or other planned or deferred gift, shown below. The Society is named after Richard O. (Dick) Ristine, who served as Chairman and then Honorary Chairman for many years. If you would like to learn more about planned giving opportunities, Leslee Spraggins would love to talk with you: lspraggins@leelanauconservancy.org or call 231-256-9665.*



Enid and Rick Grauer
Jeff and Susan Green
Mr. Richard A. Grout
Michael Grover & Nunzio Lupo
Ms. Karen Hague
Georgienne Hammer
Mrs. Jane B. Hancock
Sherrie and Logan Hardie
Mr. William S. Harper
Mrs. C.L. Harrison, III
Mr. William R. Hoff
Dr. Julianne Hoff
Jack D. Hunter

Bart and Gail Ingraham
John and Kathy Jahoda
Kay Johnston & Jeff Sanborn
Bob Jones
Mr. John H. Katt
Mr. and Mrs. Edward A. Ketterer
Mr. and Mrs. Jack A. Krause
Will and Joan Larson
Mr. and Mrs. George I. Liljeblad
Steve and Marcie Lindo
Judy & Lynn Livingston
Kurt and Eleanor Luedtke
Dr. R. William Lustig

David and Louise Lutton
Anne J. & Leonard P. Marszalek
Deborah and Steven Martineau
Larry Mawby
Lynn and Jim McAndrews
Dan and Susan McDavid
Rob & Anne Meermans
Craig A. and Nancy T. Miller
Ms. Mimi Mullin
Thomas Nelson
Karen Mulvahill
Mr. Lawrence J. Noling
Allen and Ellen Northcutt

Mike & Sue O'Riordan
Mr. and Mrs. William D. Peace
Randy Petresh
Ovide & Cindy Pomerleau
Bobbie Poor
Rasa Poorman
Thomas S. Porter
Jim & Marie Preston
Max and Linda Proffitt
Bill & Julie Pumphrey
Jean and David Redfield
Richard O. Ristine, Jr.
Dr. William C. Scharf

Gary Schultheiss & Barbara Richman
Jack and Susan Seaman
Cathy and Paul Sehnert
Mr. and Mrs. David T. Shelby
Ms. Janet Shroyer
Teena & Mike Shupert
Mr. and Mrs. Dudley B. Smith, III
Mr. and Mrs. Timothy J. Stein
Avery Stier
Dr. and Mrs. Stephen Strobel
Dr. Nora Sugintas
Mr. and Mrs. Ben A. Tefertiller, Jr.
Brian and Amy Tennis

Mr. Terry Terhune
Dana K. Thomas
Elizabeth Starks Thompson
Mr. and Mrs. Ronald Tonneberger
Barbara W. Vilter
Phil and Barb Von Voigtlander
Bruce and Betsy Wagner
Mr. and Mrs. Warren H. Watkins
Larry and Marcia Webb
Harry and Susan Wiberg
Elizabeth Bracken Wiese & Fred Wiese
Nancy and Stuart Winston
Ms. Kathie A. Woods

2017 Donors

We strive for accurate record keeping. If your name has been omitted or listed incorrectly, please contact Betsy LePoidevin at 231-256-9665 or blepoidevin@leelanauconservancy.org

* indicates Sustainers Circle Member

Champions (\$10,000+)

Anonymous (2)
Barbara and Bill Alldredge*
Mr. and Mrs. Ian Ashken*
The Rt. Rev. and Mrs. Charles Bennisson
The Brookby Foundation
CDM Foundation
Richard and Carolyn Chormann*
Mr. and Mrs. George N. Cochran*
Mr. and Mrs. James B. Croom*
Ms. Laura L. Deibel*
Dellora A. & Lester J. Norris Foundation
Jeanne and Bill Dennler*
Edmund F. and Virginia B. Ball Foundation
Gina and John Erb*
David and Becky Finger
Mr. Eben M. Finger
Mr. and Mrs. Jeffrey E. Fisher*
Dr. Pam Fraker*
Frey Foundation
Drs. Marc and Linda Gallini*
Jan Garfinkle and Mike O'Donnell*
Enid and Rick Grauer*
The Greeney Family
The Homestead
Rich and Beth Hoover*
HP Foundation
HRD-C Foundation
Mr. and Mrs. Addison Igleheart*
Mr. Michael J. Kane

Mr. Ron Lovasz
LPL Financial
M22 LLC
Mariel Foundation
Mr. and Mrs. Steven Martineau*
Larry Mawby and Lois Bahle*
Annabel and Robert Moore*
National Philanthropic Trust
Jim and Jan Norris*
Dr. and Mrs. Daniel Palmer, MD*
Mr. and Mrs. Raymond Pezzi
Bill & Julie Pumphrey*
Pyromation
Ms. Betty V. Rhoades
Mr. and Mrs. Arthur J. Samberg
Mr. and Mrs. Ross G. Satterwhite*
David and Lisa Schimmel*
Bruce and Betsy Wagner*
Larry and Marcia Webb*
Mr. and Mrs. Peter Wilson*
Joan and Randy Woods*

Advocates (\$5,000-\$9,999)

Anonymous (4)
Mr. and Mrs. Daniel C. Appel*
Gary and Christine B. Armbrecht*
Paul Solli and Kristine Ball*
Mario Batali & Susi Cahn*
Mr. and Mrs. Emil Brolick*
Hy and Nancy Bunn Family*
Cherry Republic*
Michael and Barbara Collins*
Mr. & Mrs. Charles W. Dickerson
Francie and John O. Downing
Mr. and Mrs. Hayward L. Draper*
The Economic Club of

Traverse City
Family of Sally & Dan Johnson
Ms. Julia M. Flowers*
Grand Traverse Regional Community Foundation
Don and Ann Gregory*
Curtis Hall and Susan Houseman*
Ms. Nancy Hoagland*
Mr. Walter Hoegy*
Heather Horton

Dr. Jeffrey Johnson*
Mr. Daniel L. Johnson, Jr.
Mr. and Mrs. Ronald L. Jones*
David and Linda Kaltenbach*
Mr. and Mrs. Edward A. Ketterer*
Mr. & Mrs. Edward O. Lanphier, II
Mr. and Mrs. Jonathon M. Lanphier
Mr. & Mrs. William J. Leugers, Jr.*
Bud and Nancy Liebler*
Mr. and Mrs. George Littell, Jr.*
Dr. and Mrs. Michael G. Lockhart
David and Louise Lutton*
Patrick McCarthy, MD*
Mr. & Mrs. Archibald McClure, III
Mr. Taylor C. Moore*
Frederick C. Neidhardt
The Oleson Foundation
Mr. and Mrs. Richard D. Oliver
Oliver Family Foundation
Pershing

Joshua Pokempner & Gretchen Gardner

Mr. and Mrs. David Redfield*
Robert J. Trulaske Jr. Family Foundation
Steelcase Foundation
Mrs. Sarah W. Straus
Ms. Martha A. Teichner
Susan and Viktor Theiss*
Toledo Community Foundation
Mrs. Sally Viskochil*
Andy and Elizabeth Walters
Mr. and Mrs. Warren H. Watkins*
Mrs. Barbara V. Wilson*

Partners (\$2,500-\$4,999)

Anonymous (1)
Mr. and Mrs. Bruce Barton*
Gershon and Suzanne Berkson*
Chuck and Susan Cady*
David M. and Cara V. Cassard*
Dianne Christensen and Roy Christianson
Mr. and Mrs. Edward J. Collins*

Community Foundation of Louisville
Crystal River Outfitters, The
Cyclery & M-22 GA
Cummings Christensen Family Foundation
Custom Stems
Mr. and Mrs. Roger Edgley*
Mr. and Mrs. John W. Fisher, III*
Carl Galeana*
Lori and Steve Grossnickle
Mr. & Mrs. A. Grant Heidrich, III
James and Laurie Kletzien*
Kosciusko County Community Foundation, Inc.
Mrs. Barbara A. Krause*
Lucy L. Lambert*
Rob and Linda Lanphier
Dave and Bridget Lemberg
K. James Yager and Margaret Maier
Mr. and Mrs. Donald K. Marik*
The Nancy M. & Victor S. Johnson Jr. Foundation
Novartis
Gwen Rich Estate
Mrs. Lu Rorick*
Dr. William C. Scharf*
Dr. and Mrs. David J. Smith, Jr.*
Ms. Joanne L. Sprouse*
Ms. Nancy A. Swift
The Penning Group
Mr. and Mrs. G. Neil Tyler
Barbara W. Vilter*
Mrs. Nancy P. Williams*
Andy and Kendra Wise
John Worst and Ruth Tucker

Benefactors (\$1,000-\$2,499)

Anonymous (1)
Ms. Jane Aisenbrey
Dorothy Stites Alig & Will Higgins
Mrs. Mary C. Allen*
Christie L. and Bruce T. Alton*
Barbara J. Ames
David and Jacqueline Amos*

Ms. Phyllis Archambeau
Mr. and Mrs. Dennis A. Armbruster*
Mr. John F. Ball
Mary Barber*
Battelle Always Giving
Drs. Robert and Nancy Beekman Benevity
Mr. and Mrs. Gregory J. Besio*
Mr. and Mrs. Robert Biggs*
Jonathan and Julia Birge*
Mr. Mark Bisso
Mr. Brian Blood
The Boston Foundation
Melissa Warner Bow*
Kurt M. Bowden & Nancy Dady*
Richard and Barbara Bowzer*
Alexander and Sally Bracken*
Mr. and Mrs. Peter W. Brooke*
Trish and Rick Bryan*
Dr. and Mrs. Ronald Caldwell
Marion and Gene Cartwright
Central Indiana Community Foundation
John and Anne Chafee
Chemical Bank
The Chicago Community Trust
Don and Marylou Coe*
The Columbus Foundation
Community Foundation for Southeast Michigan
Dr. and Mrs. Michael W. Craig*
James and Gayle Davis
The Dayton Foundation
Mrs. Treva N. DeJong*
Ron and Marion Dickel
Mr. and Mrs. Michael L. Dow*
Mr. Hank Dow
Ms. Mary L. Duchi
Nancy R. and Berkley W. Duck*
Beverly and Jim Duff*
Pete and Anne Eardley
Jack and Karen Elder*
Mr. Charles Evans
Stephanie Evans
Bill and Mary Fallon*

Jonathan Feld and Shelley Longmuir*
Mr. and Mrs. James A. Fisher*
Mr. and Mrs. Jerrold M. Fisher*
William Fortune, Jr. & Joseph Blakley*
Mr. and Mrs. Andrew Gerben*
Sandra Gianturco & William Bradley*
Jeffrey and Marcia Gibson*
Bob and Debbie Gilbert*
David Giles and Ellen Katz*
Bill and Pat Gillula*
Ellie Golden*
Dan and Magee Gordon*
Mr. and Mrs. Michael Gordon
Ms. Maria Gotsch*
David W. Grainger
The Greater Cincinnati Foundation
Jeff and Susan Green*
Green Brick Foundation
Mr. and Mrs. Steve Grossmann*
Michael Grover and Nunzio Lupo*
H. Fort Flowers Foundation
Mr. Charlie N. Hall*
Dr. and Mrs. Timothy B. Hanley*
Harbor Square
Mr. William S. Harper*
Tracy J. Harrison & Victor Peterson*
Harvey S. Firestone, Jr. Foundation
Susan and Jack Hayes*
Timothy Hefferon and Leeann Konrad*
John and Christy Hennessey*
Mr. and Mrs. Thomas Hiatt*
John T. and Shirley Hoagland*
Ms. Julia K. Hosek
James and Diana Huckle*
Mr. Joseph Huffsmith
Mr. Jack D. Hunter*
Daniel Inman and Catherine Little
Mr. and Mrs. Mike Jacobson*
Todd and Amanda Johnson
Mr. Thomas C. Jones*
June 8th Foundation, Inc.

Dr. David Kam & Kristi Hameedi*
Mr. and Mrs. Jeff Kane*
Kari & Fred Barton Foundation
Mrs. Janet H. Kelley*
Jamie and Polly Jo Kemler*
Todd and Jean Kennell*
Sandra Kilinski and Larry Ganz*
Thomas and Mary Ann Knowles
Jeffrey and Jane Krynski
Rob Kurnick
L. Mawby Vineyards
Penny and Jamie Ladd
Mr. and Mrs. John A. Laitala*
Mr. and Mrs. Henry Lederman*
Lime Lake Association
Mr. and Mrs. David S. Lindquist
Dr. Christopher J. Lingle*
Mr. and Mrs. Richard H. Lippert
Mr. Thomas B. Littlewood*
Mr. and Mrs. William Loveless, II*
Mike and Lori Lyman*
Leon and Pamela Lysaght*
Mr. and Mrs. Millard H. Mack*
Daniel and Lillian Mahaney
Mr. Leonard P. Marszalek*
Mr. & Mrs. Ben D. McCallister Jr.
Bill McCrory & Leslie Maclin*
Steve McGraw and Bobi Morey*
Mr. and Mrs. George W. McKay, Jr.
Mr. and Mrs. Stafford McKay*
Mr. and Mrs. William T. McKay, II
Mr. and Mrs. Stephen J. McShane*
Dr. and Mrs. David W. Miller*
Dr. and Mrs. Jerry A. Miller*
Mr. and Mrs. G. Robert Miller
The Minneapolis Foundation
Karen Mulvahill & Dan Malski*
James Musser and Camille Leugers
Charles and Connie Olson*
Dr. and Mrs. Patrick Oriol*
Dr. and Mrs. Jeffrey Pearson*
Philip S. Harper Foundation
Tom and Martha Phillips*
Mr. and Mrs. Denis B. Pierce*
Ms. Kim Pisor

Mr. J. Dwight Poffenberger, Jr.
Tom and Burma Powell*
Jim and Marie Preston*
Mr. and Mrs. Max Proffitt*
John and Wanchalee Putnam
Mr. and Mrs. George J. Quarderer*
Vance and Catherine Querio*
Mr. John H. Ray*
Ms. Alexis M. Reid*
David Reinisch and Julie Kiefer*
Renaissance Charitable Foundation
The Ricord Family*
Mr. Bernard Rink
Jon and Julianne Robinson
Rochester Area Community
Foundation
J. Franklin Roesner & Kristin
Adams*
Mr. Roger Rosentreter
Mr. and Mrs. James R. Scarlett*
Jim and Jayne Schafer*
Ms. Patricia Sharpnack*
Paul Skiem and Beth Brooks*
Mr. and Mrs. Allan Smith*
Mr. and Mrs. John P. Snedeker*
Lianne Somerville*
Mr. David L. Spargo
Mr. Chris Stack, Jr.*
Mr. & Mrs. Justin A. Stanley, Jr.*
Harrison and Lois Steans
Cherrie and William Stege
Jim and Beth Stephens*
Mr. and Mrs. Samuel Stott*
Mr. and Mrs. George
Strietmann*
Mrs. Candace K. Sutfin*
Mr. Tom Swift*
Tom Russell Charitable
Foundation
Tom's Food Market
Mr. and Mrs. Ronald Tonneberger*
Mr. and Mrs. William
VanWesten*
Mr. and Mrs. Howard Veneklasen
Beth Verhey and Daniel Toole*

Ms. Karen R. Viskochil*
William Vogt and Claire
Eberwein*
Tim and Jill Vollbrecht
Elizabeth and James Waters
Mrs. Elise I. Weisbach*
Mr. and Mrs. Tim L. Westbay
Jim and Kathy Westlake*
Elizabeth Bracken Wiese & Fred
Wiese*
Mr. and Mrs. Tom Wille*
William Harris Investors, Inc.
Nancy and Stuart Winston*
Mrs. Pauline Womac*
Mike Wooldridge & Charyn Hain
Douglas and Jennifer Wyatt
Mike and Trish Young
YourCause, LLC
Dr. Andris A. Zoltners*
Mr. and Mrs. John Zubik*

Patrons (\$500-\$999)
A2M2, LLC*
Barbara Abbott and Larry
Hauser*
Porter and Anita Abbott*
Mark and Connie Adamson*
Bary and Lynn Adler
Susan Ager & Larry Coppard*
Mr. and Mrs. Dave Albert
Suzanne Albrecht and Steve
Redding*
Peter and Vicki Alpaugh*
David Alpers
American General Life Insurance
Company
William C. and Vicki Anderson*
Mr. and Mrs. Frank J. Andress*
Ms. Sally S. Appel*
Ed Arlin and Deb Greenman*
Ms. Jane T. Babbitt
Irene G. and J. Sumner Bagby*
Ms. Jane Baker*
Andrew Bamford & Tamera
Wales
Mr. and Mrs. David L. Banks

Ms. Margaret Barber
Mark and Marilyn Bareman
Glenn and Patty Barnes*
Susan Bass and Tom Bradford*
Roger and Jan Bauer*
Ginny and Scott Beall*
Ms. Ann Beaujean
Andre Begosso and Amy Cannon*
Nancy and Joe Belton*
Richard and Carol Benner
Jill Berkeley & Larry Goldman*
Mr. and Mrs. P. James Bernardo*
Drs. Lindsay and Mark Bibler*
Troy R. Biddix and Melissa Hill
Biggs Construction Service
James G. and Ann H. Bingham
Mr. and Mrs. Kipp Bingham
Mr. & Mrs. Thomas R. Bingham
Mrs. Alice G. Bingham
David and Chari Binstadt*
Kathleen and John Birney*
Mr. Frank H. Blatz, Jr.
Dr. and Mrs. Dale M. Blount*
The Boeing Company
Mr. and Mrs. David A. Bohmer*
Andrew and Yolanda Bone
Carol and Lee A. Bowen*
Michael and Sherri Brom
Guy and Meg Brossy*
Bill and Natalie Brown
Scott and Susan Brown
Tom and Marsha Buehler*
Brig and Merrill Buettner*
Kate Bulkley & Ross
Biddiscombe*
David and Barbara Burkhardt
Jeff and Debbie Burt*
Drs. Nancy Cantor & Steven R.
Brechin*
Capital Insurance Group
Ms. Lucille Capra*
Mr. and Mrs. Mark Carlson*
Mr. and Mrs. Jack L. Carpenter*
Kyle and Betsy Carr*

Ms. Cathryn Carter*
Mr. William Cartmill
John Chapman and Candance
Daley*
Karen L. Chase & David Bellizi*
Jim and Gwen Chesterfield*
Mrs. Betty C. Clarke*
Mike and Tedi Collier*
Mr. Dennis R. Colling
Mr. & Mrs. William T. Collins, Jr.*
Comerica Charitable Trust
Michael and Michelle Connell*
Kara Cook and Michael Beno
Mr. Robert L. Cook
Mr. and Mrs. James Cooper
Richard Cooper & Jan Tennant*
Marie Eleanor Coppa*
Mr. and Mrs. E. Neal Cory, II*
Greg and Helen Cosma
Mrs. Carolyn L. Crane
Dr. and Mrs. Keith L. Curtis*
Mary Cusick and David Wible*
The Dabney & Lavin Family
Mr. Jay Dankovich*
Mr. and Mrs. Daniel W. Darland*
Judy Darst
Drs. Paul Dechow & Joanne Blum*
Adele and Page Dinsmore*
Mr. and Mrs. Jeffrey E. Dixon*
Mr. Joseph E. Dlugopolski
Ms. Nancy L. Dotlo*
Mrs. Karen Douma*
Roland Drayson*
Mr. and Mrs. Gary P. Drew*
Eugene E. & Elaine C. Driker
William Drozdalski & Linda
Janman*
Harry and Beth Drucker*
Tom and Gretchen Dunfee*
Bruce and Lynn Dunn
Dr. and Mrs. John P. Dunn*
Mr. and Mrs. John R. Dye*

David Edelstein & Jennie Berkson*
Ms. Sherry D. Edwards*
Aaron and Jennifer Ellenbogen*
Mr. and Mrs. Robert Elliott*
Mr. and Mrs. Rolf Embertson
J. Richard Emens & Beatrice E.
Wolper*
Emerson
Mrs. Mary Emmett*
Epicure Catering, Cammie Buehler
Joe and Dawn Erhardt*
Michelle Falknor
Dr. and Mrs. Neal H. Fellows*
Dr. and Mrs. Robert E. Fellows*
Brian and Ann Fillingham
Ms. Susan J. Finke*
Mr. and Mrs. Paul J. Finnegan*
Mark and Betsy Fisher*
Mr. and Mrs. G. Stephen Fisher*
Mr. and Mrs. John Fitzpatrick*
Mr. and Mrs. Michael
Fleishman*
Mrs. Janice W. Fleming*
Russell and Layne Flick*
Robert and Gloria Floden*
James Fluehr
James and Kathryn Fonte*
Mary L. Forster, M.D.*
Forty-Five North Vineyard and
Winery
Dr. and Mrs. Richard K. Foster*
Drs. Robert Foster & Valarie
Miner*
Jack Fox and Katrina Schuur
Mr. and Mrs. Thomas H. Fox*
Edmund Frank
Ms. Judy L. Frederick*
Mrs. Ruth M. French*
Donald and Kathryn Frerichs*
Jim and Sally Friend*
Ms. Jane L. Gale*

2017 Donors Continued

Patrons (\$500-\$999) cont.

James and Kathy Ganley*
Mr. and Mrs. Richard M. Gans*
Mr. and Mrs. Lee H. Gardner*
Gene and Kathy Garthie
Ms. Judith E. Gass*
William and Bertha Gebo*
Mr. Paul Gerhart*
Jeffrey and Georgia Gietzen*
Robert H. and Nancy M. Giles*
Mr. and Mrs. Norbert W. Gits*
Dr. and Mrs. Robert F. Gleffe
Mrs. Janet E. Goettle*
Dr. and Mrs. David Gordon*
Mr. and Mrs. Larry L. Graves
Greater Kansas City Community Foundation
Mr. and Mrs. John S. Greeno
Jerry Gretzinger & Meg Staley*
Ms. Karen Rubner Grotberg
Mr. and Mrs. Robert M. Grover
Mr. and Mrs. James Groves
GTRCF - The Rotary Endowment Fund
Mr. Forrest Gunderson*
Bruce and Cynthia Hagen*
Mr. Robert L. Hagerman*
Mr. and Mrs. Rick Halbert*
Mollie and Chuck Hall*
Mr. and Mrs. Jeff Hamilton*
Jeff and Ilze Hammersley*
Pat and Linda Hanniford
Mr. and Mrs. Edward C. Hanpeter*
Mr. Paul Hanpeter*
Ms. Dorothy Hanpeter*
Mr. and Mrs. Alan E. Hartwick*
Harvey's Foundation
Judith Case & Karl Hausler*
Lynn and Diane Hedeman
Bev and Dan Heinz
Ms. Mary Helmick*
Mark and Beth Henry*
Mr. and Mrs. David Herr*

Frederick and Judith Hill*
Mr. and Mrs. Robert L. Hinkle
Drs. John and Judy Hoeffer*
William and Suzanne Hoff*
Mrs. Nancy Hollowell*
Mr. and Mrs. Kent N. Holton*
Thomas Hooker and Kristen Rabe
Mr. John H. Hoppin, Jr.*
Michael Huey and Christian Witt-Dorring
Mrs. Ann Huffman*
Mr. and Mrs. Charles J. Hurbis*
John and Kathleen Imboden*
Mrs. Monica Inchaustegui
Ms. Catherine E. Irwin*
Mark and Elaine Michener Israel
T. Michael and Joan Jackson*
Mr. and Mrs. John Jahoda*
Susan and Jerry Janecke
Mr. and Mrs. Kalin S. Johnson*
Mr. David Carroll Johnson*
Geoff and Deborah Kammerer
Michael Kaselnak & Michelle Taylor*
Alan and Teri Kasper*
Mr. and Mrs. Mike Keen*
Pat Kernaghan and Janet Ward*
Mr. and Mrs. Steven Klein*
Mr. and Mrs. David E. Kleiner*
Mr. Charles Knapp*
Dick and Sherry Koenig*
Mr. and Mrs. Jack A. Krause*
Mr. and Mrs. Franc Krebs*
Mr. and Mrs. Jeffrey Kremin*
Mr. and Mrs. Arthur J. Kubert*
Donald and Jeanne Kunz
Joseph Lada and Gary Cozette*
Mr. and Mrs. Stuart Laing*
Mr. and Mrs. Douglas G. Lake*
Claude Lambert*
Thomas and Bridget Lamont*
Mr. and Mrs. Theodore J. Lanham*

Ms. Karen Ledsky*
Leelanau Cheese Company
Mr. James W. Leenhouts
Ms. Linda LeMieux*

Mike Litch*
Frank and Conchita Lockhart*
Mr. and Mrs. James R. Lockhart*
Drs. Scott and Mary Beth K.



It Was an Honor

A 2017 highlight: Martha Teichner spoke to over 300 people at the Traverse City Economic Club's annual dinner about her passion for Leelanau. She told the moving story about growing up on Lime Lake and how she helped to create the Teichner Preserve, named for her beloved parents. Thanks to Martha, the Conservancy received a \$5,000 Honorarium from the Club. Pictured are Executive Director Tom Nelson (left), Martha and Vern Powell, President of the Economic Club.

Betsy and Dana LePoidevin*
Joe and Kim Leugers*
Mrs. Nancy H. Liley*
Mr. and Mrs. John Ling*
Mr. and Mrs. Todd Lininger*
Bill and Debbie Lipner

Lowe*
Steven Luebkehan & Sara Later*
Kurt and Eleanor Luedtke*
Dr. R. William and Jeri Lustig*
Dr. and Mrs. James Lutz*
Mr. and Mrs. Mark J. Lyons*
Ms. Theresa Maday*

Anne H. Magoun*
James F. Maher & Emily Barton-Maher
Mr. and Mrs. Themistocles L. Majoros*
Ms. Nancy L. Malecki*
Al and Susan Manson*
Dan and Lynne Mapes-Riordan
Ms. Josephine Marquis*
Mr. and Mrs. Karl Marsh*
Mr. and Mrs. John G. Martin*
Mr. and Mrs. Robert T. Martin*
P. Michael and Kathryn May*
Dr. and Mrs. William J. McCool*
Kate and Halley McDonald*
Mr. and Mrs. Doug McInnis*
Mr. and Mrs. Glenn M. McNett*
Jeff and Erin McRae
Mr. and Mrs. Donald Mead*
Mr. and Mrs. Franklin B. Mead*
Mrs. Mary Ann Meanwell*
Rick and Sally Meese*
Dr. Lisa Meils*
Mr. and Mrs. David L. Micheltmore*
Dr. Phillip D. Mikesell*
Craig A. and Nancy T. Miller*
David and Catherine Miller*
Laurence and Melisa Miller*
Mr. and Mrs. Frederick Miller*
Nancy and Jim Mogle*
Bob and Marcia Moglia*
Jim and Jeanne Montie*
Casey and Marissa Moore
Mr. Steve Morency*
Michael and Theresa Morton*
Mr. Cyril Moscow
Lyn Motlow*
Mrs. Karen A. Mudgett
Tom and Janet Mug*
Mr. and Mrs. Michael Muladore*
Ms. Mimi Mullin*
Ann and Don Munro*
Annette and Eric Munson*
Tom Nelson and Stephanie Berger-Nelson*

Dr. and Mrs. Thomas Newland
Leonard Niehoff and Lisa Rudgers*
Jeffery and Susan Nielson
Ms. Dianne Nieman
John Nitschke & Jean McLaren*
Mr. and Mrs. Thomas Nixon
Norbert and Paula Gits Foundation
Ms. Kiku Obata
Edward & Caroline G. Oberndorf*
Ocean Reef Community Foundation
Mr. and Mrs. Thomas Oetinger*
Ms. Susan P. Oliver*
Kathryn Eckert Omoto*
Dr. and Mrs. Michael W. O'Riordan*
Dr. and Mrs. Mark Orringer*
Michael Ouzounian and Trish Rogers*
Ron Paczkowski & Judy Talbott*
Laura Gits Paine*
Mr. and Mrs. Jerry P. Palmer*
Mr. David Patton*
Mr. William D. Peace*
Mr. L. Harlan Peck
Geoffrey Peckham and Patricia Melzer
Ms. Mary V. Petterson*
Donn and Kathleen Piatt*
Ellen Pisor*
Plante Moran Trust
Michael and Nancy Plessner*
Dick Pobst
Mrs. Bobbie S. Poor*
Mr. Richard Potter*
Preston P. Joyes Trust - Joyes Cottage
Mr. and Mrs. Brian R. Price*
Mr. and Mrs. Clayton A. Prugh*
Jack and Janice Purse*
Lori Holstege and David Quimby*

Ms. Margaret M. Raben
RDV Corporation
Polly Rea*
Mr. and Mrs. Stephen Read
Doug and Beth Reid*
Dr. Raymond E. Reinert*
Peachy and John Rentenbach*
Keith Reynaud and Molly
Donahue
Ms. Patricia Richardson
Shawn Ricker and Steven
Cacossa*
Mr. and Mrs. John W. Risk*
Mr. and Mrs. Robert J. Roberts*
Carl Robinson and Karen
Fujisawa*
Mr. and Mrs. Scot C. Roemer*
Ms. Melanie A. Rogers*
Bill and Kate Rohlf*
Mr. Thomas M. Rooks*
Kati Rooney & Jim Hennessey*
Michael and Vicki Ross*
Mrs. Ricky Ross*
Mr. and Mrs. Richard A.
Rossman*
Dr. and Mrs. Todd H. Ryan*
Mr. Kenneth Ryskamp
Seth Sadis and Kristen Verhey
Mrs. Mary Elder Schaff
Phil and Kathy Scherer*
Mr. and Mrs. Robert Schlueter*
Walter and Leslie Schmid*
Thomas and Suzanne
Schoeneberger
Todd and Sheila Schorer*
Mr. and Mrs. Milford J.
Schuette*
Mary Jo Schuld*
Gary Schultheiss & Barbara
Richman*
Jack and Susan Seaman*
Ms. Joan H. Searby*
Jim and Cathy Searing*
Mr. and Mrs. Jon M. Sebaly*
Mrs. Rosalind B. Sell*

John and Susan Sentell
Anne and David Shane*
Mary and Bob Shapton
Carrie A. Sharp*
John Shoaff & Julie Donnell*
Daniel C. Shoup & Anne Bishop
Shoup*
Mr. and Mrs. Michael Shupert*
Mr. Richard Shuster*
Mrs. Mary J. Siddall
Cindy Eppolito and Charles
Silver*
Jim Simons and Shirlee
Affhalter*
Mr. William Slater*
Paul and Margaret Sloan*
Andy and Marietta Smith*
Doug and Sally B. Smith*
Mr. and Mrs. Alton Smith*
Stephen and Sandra Smith*
Dr. and Mrs. David E. Spathelf*
John and Leslee Spraggins*
Ms. Mary M. Stanley*
Franklin and Hollis Starks*
Ms. Jennifer Steans
Mike and Marie Stearns
Mr. and Mrs. Timothy J. Stein*
Robert Steinhilber & Mary Jo
O'Connor*
Mrs. Eleanor B. Stephenson
Mr. John B. Stewart
Chuck Stockwell*
Jean and Bob Stoessel*
Don and Tricia Stogsdill*
Mr. and Mrs. James J. Stukel
Mr. and Mrs. W. Richard
Summerwill*
Mrs. Laura L. Swire*
Ms. Theresa Szubartowski
Michael and Terry Tarnow*
Amy and Brian Tennis
The San Francisco Foundation
Dana Thomas
Richard and Sera Thompson*
Mike and Ginny Toal*

Dan and Sue Tobin*
Mrs. Jeanne Townsend
John and Mary Tris
Ms. Kathy M. Tuckerman*
Dennis and Kathy Turner*
Bob and Trudy Underhill*
Mr. and Mrs. Timothy J. Unger*
United Jewish Foundation
United Way of Tarrant County
Mr. and Mrs. Gary C. Valade*
Mr. and Mrs. Bill Valpey*
Mr. and Mrs. Joseph M. Varley*
Mrs. Anne M. Vaughan*
Warren and Julie Veltman
Linda and Doug Verellen*
Mary Ann and Robert Victor
Kate Vilter*
Mr. Larry Viskochil
Mark and Carol Vittert
Phil and Barb Von Voigtlander*
Carl and Dorothy Walker*
Mr. and Mrs. F. Jon Walter*
Andrew and Molly Watkins*
Mr. and Mrs. David K. Watkins*
Sheen and David Watkins*
Doug and Jackie Watson*
Weathervane Vineyards, Inc.
Mr. John Weber*
Ben and Cynthia Weese
Mr. and Mrs. Paul Weiner
Mr. and Mrs. George R.
Wellman*
Dr. and Mrs. R.A. Westphal*
Dickson and Ann Whitney
Wildlife and Wetland Solutions*
Brian Williams & L. Fisher-
Williams*
Mr. and Mrs. George R. Wills*
Mr. Todd Wills
Ms. Jane Wilsher
Terry and Sandy Wilson*
Barbara and Eric Winkelman*
Mr. and Mrs. John Withee*
Mr. & Mrs. Daniel M. Witten, II*
Jack and Carol Wixted*

Mr. Peter C. Wolcott*
Mr. and Mrs. Dave Wollenhaupt*
Caroline and Edwin Woods*
Wayne and Sharon Workman*
Douglas and Bonnie Yingst
Bruce and Susan Young*
Marilyn and Gregg Zank*
Mr. and Mrs. John J. Zevalkink
Mr. M. Richard Zinman
Mr. and Mrs. Michael Zipser,
Attny/CPA*
Dr. Birgit Zipser
David and Kenna Zorn*
Linda and Joel Zylstra

Stewards (\$250-\$499)

Anonymous (3)
Geoff Abbate & Marty Eisenbarth
AmazonSmile Foundation
Andrew and Susan Appel
Mrs. Martha B. Baker*
Judy and Bruce Balas*
Kenneth and Mary Balcom
Mrs. Lena A. Ball
Mr. and Mrs. Carl H. Ballou
Rob and Shelly Batterbee
Mr. David S. Battle
Mr. and Mrs. Don Baty
Virginia Baxter
Ron and Jane Becker
Dr. and Mrs. Royce L. Beers
Mr. Stephen & Dr. Nancy Beights
Ms. Marcia Bellinger
Lisa Benjamin & Tyler Hesterhagen
Carolyn Doepke Bennett
Mr. and Mrs. John Bennett
Mr. and Mrs. John B. Biggs, Jr.
Gina and Ron Boe
Mr. and Mrs. Gilbert A. Bogley*
Dr. Amy G. Bolmer
Mr. and Mrs. Philip Boria
Paul and Sara Derrick Borzcik
Mr. Jack A. Bosgraaf
Caroline F. Brady

Carolyn Bregard
Mr. and Mrs. John H. Breniser
Barbara J. Briner
Bryan Brown
Karla and Scott Brown
Mr. Herb Brown
Rick and Kathy Brown
Neville and John Bryan
Ms. Sandra Buell
Alice Buffington
Mr. & Mrs. Timothy J. Bugenske
Walter and Karen Bulkowski
Steven and Barbara Bursian
Mr. & Mrs. George A. Cantrick, Jr.
Robert Carr & Lydia Arnold
Thomas and Denise Frieder Carr
Al Chaffee
Craig Chick and Katherine Doner
Dr. Mary Ciotti
John and Liz Clark
Ms. Bliss Clark
Carol and David Clifford
Dotti Clune and Jill Henemyer
Drs. Priscilla Cogan & CW Duncan
Mr. and Mrs. Robert Cohen
Coldwell Banker Schmidt Realtors
Jeanne Cole and Jonathan Ledsky
Jonathan and Anne Mason Colman
Dr. and Mrs. Vincent Couden
Molly and John Crabb
William and Patricia Crean
Nancy and Tom Davies
Rodger and Debbie Davis
Mr. and Mrs. Carl M. DeFaria
Dennis Dennehy
Stephanie and Mark Duckmann
Elizabeth and Mike Eagles
Easling Construction Company
James and Jill Egan
Mrs. Judith M. Egeler
William and Martha Encherman
John and Michelle Engler

Dr. Claire Ernst & Al Bedecarre
Rob Evans and Adria Badagnani
Mr. and Mrs. Gregg Fazzoni
Dr. David S. Feenstra
Mr. and Mrs. Jack Ferguson
Ms. Cathleen C. Fisher
Nancy Fleming & Bob Smallwood
Kenneth Floody & Elizabeth
Freebairn
Mr. and Mrs. John Fox
Mr. and Mrs. David T. Gardner
Ms. Cary R. Gasner
Mrs. Barbara F. Gentile
Donald Gilligan & Regina
Maniscalco
Mrs. Elizabeth W. Gotsch
Gourdier-Fraser, Inc.
Mr. and Mrs. David Grauer
Mr. and Mrs. Thomas N. Griffith
Jim and Mary Jo Grogan*
Mr. and Mrs. Mike Groleau
Rod Groleau and Cathy Franciosi
Mr. and Mrs. Christopher Haber
Mr. Michael W. Hall
Mrs. Barbara B. Hall
Bill and Marge Halls
Sherrie and Logan Hardie
Jane Hardy and David Schmidt
Gordy and Jeanne Hatt
Linda and Denny Hoemke
Mr. and Mrs. Brian Howe
Rowell and Alice Huesmann
Mr. and Mrs. David D. Hunter
Mrs. Barbara A. Irwin
Brian and Jennifer Jaffe
Mrs. Mary E. Jellema
Jay and Betsy Johnson
Mr. and Mrs. Bradley J. Johnson
Ms. Emily Kanitz
Jason and Sandy Kimpel
Mr. Alan T. Kirby

2017 Donors Continued

Stewards (\$250-\$499) cont.

Richard Kosinski & Deborah Ochs
 Dr. David Kramer
 Lee Kremin & Marjolijn Van der Velde
 Dr. Karl T. Kristen
 Mr. and Mrs. James D. Kuras
 David and Judith Kurtz
 Alan and Caron Lacy
 Mr. and Mrs. Bradley E. Laffrey
 Peg and John Larson
 Mr. and Mrs. Stephen Later
 Mr. and Mrs. Robert Laven
 Leelanau Enterprise
 Mr. and Mrs. David M. Leiser
 Anne Leugers and Elmer Lipp
 Neal Little
 David P. Lloyd
 Gus and Katie Lo
 Carlos and Susan L. Lowell
 Mr. Ralph Mandarano
 Maple Lane Motel and Resort
 Ms. Lucy W. March
 Mr. Vance Marshall
 Karen C. Martin
 John and Janet Mattson
 Bill and Jan Maxbauer
 Mr. and Mrs. Gary McCausland
 Allan and Mary McKisson
 Mr. Campbell McLeod
 Martin and Karen McPhee
 Drs. Robin Lin Miller and Miles McNall
 Mr. John Morris
 Mr. Robert R. Morse, Jr.
 Richard and Abby Mortensen
 Mr. Jerry K. Muir
 Mr. and Mrs. Dennis Murphy
 Dr. Janet Navarro
 Mrs. Ann Nichols*
 Mr. and Mrs. David Nitschke
 Catherine and Robert Noonan

Mr. and Mrs. Randy Oberson
 Mrs. Janey Odell
 Dale and Sue O'Donnell
 Olson, Bzdok & Howard, P.C.
 Kelly and Jeff Orringer
 Alan and Kimberly Page
 Mr. Keith E. Parker
 Joe and Zoe Pearson
 Ms. Linda Peppler
 Pfizer Foundation
 Phillips-Van Heusen - Madison
 Edmund and Ann Piet Anderson
 William and Joann Pinkerton
 Guy Plamondon & Anneke Wegman
 Brian Farmer & Abigail Pohlski
 Patricia Pollock and Mark Rodak
 Ms. Denise Poloyac
 Dr. and Mrs. Robert Pool
 Glenn and Rasa T. Poorman
 Ms. Donna Popke
 Thomas S. Porter
 Stephen and Marcie Qua
 Larry and Carolyn Rawsthorne
 Ms. Laurie G. Remter
 Mr. and Mrs. Deway J. Renneker
 Jim Richardson
 Mr. & Mrs. Richard O. Ristine, Jr.
 Mr. and Mrs. Eppa Rixey
 Mr. and Mrs. Ronald R. Robinson
 Mrs. Sarah F. Roloson
 Ms. H. Teak Roloson
 Phil and Kate Roos
 Mrs. Marcia L. Rose
 Mary Cobb and Peter Rouseelot
 Jim and Suzy Royce
 Judith Rycus & Ronald Hughes
 Salesforce.org
 Mrs. Barbara A. Sander
 Cecily & Kurt Sanford & Family
 Mr. and Mrs. Edward D. Schocker
 Mrs. Patricia D. Shea
 Ms. Patricia Shiley

Shugart Builders
 Mr. and Mrs. Jeff Shutz
 Rick and Donna Simonton
 Mr. and Mrs. Robert Smart, Jr.
 Eric Smith & Elasa Schaff Smith
 Mr. Thomas Smith
 Mrs. Sharon Smith
 Ms. Deborah Somerville
 Eliot Singer & Suzanne Sorkin
 Patrick and Katherine Spyke
 Quinton and Margaret St. John
 Monty and Kristen Staggs
 Mr. and Mrs. Jerry J. Stanek
 Larry Stockline
 Mrs. Antoinette J. Stuhldreher
 David and Karin Summers
 Mr. and Mrs. John Sweet
 Mr. Lee Taft
 Cynthia and Bruce Taggart
 Abbot and Josie Thayer
 Paul Thielking
 Bert and Diane Thomas*
 Three Sisters Foundation
 Mr. and Mrs. Steve A. Torok
 Shannon and Chris Torres
 Traverse City State Bank
 Carol and Ruben Trono
 Mr. and Mrs. Dan Tubbs
 Mr. and Mrs. Ken VanElslander
 Roger Wallace & Mary Baughman
 Julie Walter
 Sasha and Adam K. Warner
 Noreen and Stewart Warren
 Mrs. Alice B. Weaver
 David Weisbach and Joan Neal
 Mr. and Mrs. Edward Weller
 Mr. Max Wendell
 White Family Partnership
 Mr. and Mrs. Harry L. Wiberg
 Ms. Candace Wiebener
 Lisa Wilsher & Steve Chamberlin
 Robert T. Wilson & Sandra Smith
 Bill and Rita Witler
 Norman and Susan Woerle
 Dick and Jane Woolsey

Mr. and Mrs. James C. Wynns
 Duke Yoon
 George and Kathleen Zink

Contributors (\$100-\$249)

Anonymous (3)
 Ms. Joanie Abbott
 Mr. and Mrs. Thomas Abraham
 Mr. and Mrs. David E. Adams
 Mr. & Mrs. Weston W. Adams, Jr.
 Ms. Anne F. Adams
 Mr. and Mrs. Robert D. Aicher
 Diane Aigotti & Sam Satalic
 James and Annie Albanice
 Jim and Jan Albers
 Mr. and Mrs. Gary Alden
 Alfie Embroidery Inc.
 Tom and Nancy Alfieri
 Mr. and Mrs. Robert L. Alflen
 Mr. and Mrs. Mark C. Allen
 Ms. Jane B. Allen
 William and Nancy Allen
 Dr. and Mrs. Gordon Amidon
 Mr. William H. Anderson
 Mrs. Mary H. Anderson
 Ms. Susan Anderson
 Paul and Melisse Anderson
 Mr. and Mrs. James P. Andres
 Tom and Marsha Andres
 Mr. and Mrs. Charles J. Andrews
 Mr. Matt Anhut
 Mike and Ruth Arents
 Mrs. Lisa E. Armas
 Sara and Rick Armbruster
 Dale and Joy Arnold
 Art's Tavern
 Mr. and Mrs. Jim Aufderhaar
 John C. Auffenberg
 Mr. and Mrs. Louis E. Aug
 Ms. Kristi Avery
 Rich and Cassie Axtell
 Bahle Enterprises, Inc.*
 Mr. David Bahr
 Dr. and Mrs. Walter M. Baird
 Mr. and Mrs. Fred Bakker-Arkema

Peter and Lauren Bakker-Arkema
 Kris Baldo
 Mr. and Mrs. David F. Ball
 Mr. and Mrs. John M. Ballantyne
 Mr. and Mrs. Mike W. Bandy
 Mr. & Mrs. William A. Bannasch
 Mr. & Mrs. George E. L. Barbee
 Ms. Patricia Bard
 Mr. and Mrs. Gary Bardenhagen
 Mr. & Mrs. James V. Bardenhagen
 Gregory Barnell & Oliver Bacon
 Mr. and Mrs. Patrick J. Barry, Jr.
 Mr. and Mrs. Peter Bauer
 Ms. Patricia Bauer
 Carol and John Baughman
 Merrill and Russell Bausch
 Renee Beam
 Becky Thatcher Designs
 Mr. and Mrs. John E. Beeskow
 Ms. Margo Behler
 Paul and Mary Lynn Belden
 Ms. Paulina Bendana
 Mr. Kenneth Benjamin
 Mrs. Rosemary R. Bennett
 Peter and Judith Bensinger
 Mrs. Gill Bentley
 Ms. Debra Benton
 Ms. Anne Hatcher Berenberg
 Vicki Berglund & Andy Gould
 Steven and Christina Bergmans
 Mr. Vinson L. Bidlingmeyer
 Mrs. Nancy A. Bierley
 Kelly and Jay Billings
 Mr. Charles W. Binder
 Duane and Jean Bingel
 Edward and Joan Birrell
 Tom and Gwen Bischoff
 David Blackmore & Barbara Worland
 Mr. and Mrs. James G. Blashill
 Drs. Peter and Eleanor Blitzer*
 Mr. and Mrs. Timothy Bloomquist
 Dr. and Mrs. Harry M. Blount
 BNY Mellon Wealth Management
 Mr. and Mrs. William C. Bobbs

Ms. Joan C. Bock
 Ms. Margaret Bogart
 Mr. and Mrs. Robert A. Bolak
 Paul and Karen Bolhuis
 Mrs. Sally B. Booth
 Mr. and Mrs. Peter A. Borden
 Mr. and Mrs. Dave Borton
 Thomas and Susan Boucher
 Mr. John Bourbonnais
 Mr. John Bourgault
 Mrs. Florence K. Bowlby
 Ms. Barbara Boyer
 Mr. Daniel J. Boynton
 Ms. Marcia J. Boynton
 Will and Margee Bracken
 Mrs. Helen A.P. Bradley
 Mr. & Mrs. Christopher E. Branson
 Brengman Brothers LLC
 Mrs. Dorothy M. Brenner
 Brian and Cathy Brenton
 Mr. Timothy Brick
 Ms. Helen Brohl
 Scott and Wendy Broshar
 Jim and Laura Brown
 Judy & Meg Brown & David Ward
 Mrs. Carolyn R. Brown
 Michael and Jeanine Bruening
 Rev. Philip and Alice Bruening
 Ms. Mary Jo Brumbaugh
 John and Susan Bryant
 Mr. William W. Bryant
 Fredrick Budd and Donna Wilds
 Mr. and Mrs. Richard W. Budinger
 Mr. H. Michael Buhler
 Paul and Tanya J. Bulthuis
 Bunko Ladies
 Mrs. Carol P. Burchfield
 Phil and Laura Burk
 Mr. and Mrs. Keith W. Burnham
 Mrs. Avery L. Burns
 Mrs. Donna D. Burr
 Dr. and Mrs. Paul D. Burstein
 CA Technologies
 John and Sherry Calkins
 Ms. Annette Calvert

Frederick and Denise Campbell
 Mrs. Maureen Campbell
 Mr. and Mrs. Michael P. Campo
 Mr. and Mrs. Howard W. Cann, III
 Jackie Cantalupo
 Joseph Capuano and Mary Skiver
 Mr. David G. Card
 Ms. Barbara B. Carlitz
 Mrs. Susan Carlyon
 Ms. Margaret Carmody
 Ms. Gayle L. Carpenter
 Tammy Carpenter & Scott Hebert
 Mr. William W. Carruthers
 Mrs. Sally Casey
 Mr. and Mrs. Thomas D. Cassidy
 Philip Castillo & Susan Rundle
 Andrew Caughey & Shelly Neitzel
 Mr. R. Weston Caughlan
 Mr. and Mrs. David D. Cell
 Pat Centner
 Marilyn and Ken Cerny
 Jim and Linda Chalat
 Charles Chamberlain & Ann
 Nowak
 Ms. Charlotte Chamberlain
 John and Marsha Chamberlin
 Mr. & Mrs. Stephen C. Chambers
 Joe and Sybil Chandler
 Mrs. Joan Chandler
 Mr. Christopher Channer
 Greg and Barbara Chapman
 Mary Ann and Reuben Chapman
 Bill and Anne Chatfield
 Gary and Lee Cheadle
 Chef's Pride Catering
 Cherry Bay Orchards, Inc.
 Mr. and Mrs. David Chesterfield
 Ms. Bobbi Ann Chilson
 Mr. and Mrs. Donald Christie
 David and Susan Chrostek
 Mary Faggan Churchill
 David and Kristen Clark
 Mr. and Mrs. Allan J. Claypool
 Eric and Helen Clemetsen
 Drs. Steven and Molly Cline

John and Donna Clingerman
 Mr. and Mrs. John M. Cloud
 Roberta and Allan Cohen
 Mr. Douglas Cole
 Mr. and Mrs. John D. Coleman
 Mrs. Constance D. Coleman
 Grant Cone and Tracey Paddock
 Ms. Susan Conkling
 Mrs. Theda T. Connell
 Bill and Linda Connor
 Peter and Lauren Connor
 Jerry and Kathy Conroy
 Vincent and Margi Conroy
 Mr. and Mrs. Glenn E. Cook
 Cheryl Cooper
 Karl and Tracy Cooper
 Mr. & Mrs. Raymond K. Cooper, II
 Cooper-Gerhart Consulting
 Forestry LLC
 Ms. Jeanne Corbett
 Mr. and Mrs. Bruce Cornell
 Ted Cornell and Nancy Schwartz
 Mr. and Mrs. Daniel B. Cote
 Jim and Lynne Cowart
 Paula and Rich Cowhy
 W. Scott Craig & Carol Bawden
 Mr. Thomas W. Crampton
 Bill and Margaret Crane
 Frank and Mary Crane
 Jennifer Crane and Scott Denning
 Ms. Lynne Crane
 Charles and Susan Crawford
 Anthony Creane & Ana Maria
 Herrera
 Henry Crevensten & Carlin Senter
 Ms. Melissa Crimmins
 Lori & Sean Cryan
 Mr. Thomas A. Culbertson
 Mr. and Mrs. Roger Cummings
 Mr. Cedric G. Currin
 Mr. and Mrs. Stephen J. Custer
 Mrs. Kathy Czerniawski
 Mr. Michael Dailey
 Daniel Frisch Architect PC
 Ms. Carolyn Danielson

Mrs. Barbara Danly
 Mr. Donald D'annunzio
 Janet and Nicholas Darby
 George and Maryellen Daston
 Mr. and Mrs. John G. Davey
 Ms. Catherine M Davis
 Mrs. Lynne S. Dawson & Family
 Mr. and Mrs. Joseph P. Day
 Ann and Richard DeBoer
 Deering Tree Service
 Joe Defors & Jan Rygwelski
 Dale and Meg DeJager
 Ms. Maureen J. Delaney-Lehman
 Gregory and Lucile Demanski
 Ms. Laura Demanski
 Mr. R. Garret Demarest
 Mrs. Michelle Denny
 Joyce, Michael & Thomas Deren
 G. Paul and MaryAnn Derosa
 Tom and Audrey DeVault
 Mr. and Mrs. Robert DeVries
 Mr. and Mrs. George DeWeese
 DGN, LLC
 Mr. and Mrs. John F. DiClemente
 Mr. Gino DiClemente
 Kevin Diels & Jane Damschroder
 Mr. and Mrs. Paul F. Diller
 Mr. and Mrs. Robert Diloroto
 Dave and Carol Dixon
 Joseph Dlugopolski & Kathryn
 Hume
 DMD Marketing Corp.
 Mr. and Mrs. William L. Dockter
 Ms. Kathleen Doherty
 Kathleen Dolson and Christopher
 Spilling
 David & Cynthia Domanchuk
 Nick and Heather Donohue
 Robert and Nancy Doughty
 Barbara and Barry Dove
 James and Kelly Doyle
 Paula and Bryce Dreeszen
 Mr. and Mrs. Joe Dressel
 Mr. and Mrs. Michael DuBrul
 Bob and Rae Dumke

Drs. Michael and Carrie Dunn
 Mr. and Mrs. C.R. Dunn
 Mr. and Mrs. Michael Durbin
 Mr. & Mrs. G. Thomas Dutmers
 Mr. & Mrs. James E. Dutmers, Jr.
 Ms. Barbara A. Duvall
 EA Companies, Inc.
 Mr. Gregory L. Ebel
 Mr. and Mrs. Richard Eby
 Mr. and Mrs. Aaron Edick
 Charles and Julia Eisendrath
 Elk Rapids Garden Club
 Fred and Nancy Elmore
 Elaine Emens and Jackie Fields
 Mrs. Carol Y. Emens
 Mrs. Lin Emmert
 John and Linda Engelhard
 Tom and Juli Erdmann
 Gail and Keith Evans
 Mr. Albert A. Evans
 Mr. and Mrs. Daniel Ezekiel
 Melissa and Jamey Fadim
 Mrs. Jeanne P. Falberg
 Dr. Julie Faller & Robert Schub
 Laurence and Catherine Fallon
 Mr. and Mrs. Hugh A. Farber
 Walter and Marjorie Farrell
 Mr. and Mrs. Douglas S. Faulkner
 Mrs. Mary C. Fay
 Ms. Susan V. Fehrenbach
 George Felton & Karen Thomas
 Erika and Dennis C. Ferguson*
 Rev. and Mrs. Gerald Ferguson
 Ms. Donna Ferrante
 Mr. Mason Ferry
 Mac and Jan Finch
 Pete and Julie Finch
 Mr. Buzz Finke
 Mr. Harry J. Finke, IV
 Mr. and Mrs. Jud Fisher
 Peter and Cassidy Fisher
 Mr. Mark Fisk
 Mrs. Julie Fisk
 Mr. and Mrs. Roger H. Fitch

Susan and Laurence Flaccus
 Mr. Tyrone G. Fleeman
 Ms. Alexa Flesch
 John and Connie Flynn
 David Foley & Margaret Willman
 Mr. Richard W. Force
 Glenn and Kim Ford
 Allen and Nancy Forsaith
 Mr. Eugene Forster
 Robert and Mary Foster
 Ben and Judy Fowler
 Mr. Chuck Fraenkel
 Mr. Andrew W. Frank
 Mr. James W. Frederick
 James S. and Judith N. Freeman
 Mr. and Mrs. Douglas J. Freeman
 Mrs. Nancy P. Freeman
 Adam French & Andrea Walrath
 Michael Gadbaw & Sally Chandler
 Ms. Judith Gage
 James, William & George Gaggos
 Cheryl Gain & Brian J. Fairbrother
 Benjamin and Jessica Galen
 Mr. Matthew Gamser
 Dilys Tosteson Garcia & Lola
 Jackson
 Mr. and Mrs. Paul D. Gard
 Stephen Gardner, Jr. & Margot
 Nacey
 Phil Garrison and Patricia McGee
 Mr. and Mrs. Billy R. Garwood
 Mr. and Mrs. Jack Gaziano
 Paul and Teri Gelter
 Deborah A. Gephardt and Family
 Jeff and Julie Gerstenberger
 Mike and Missy Gettle
 Paola Gianturco
 Michael and Reta Gibbons
 Thomas and Kirsten Gilbert
 Scott and Erin Giles
 Mr. Ed Gill
 Karen Gioia

Carl and Marsha Giroux
 Mrs. Frances M. Gits
 Ms. Victoria Rea Gits
 Richard and Marianne Glosenger
 Mr. & Mrs. Richard J. Goettle, IV
 Mr. Richard S. Golas
 Mr. and Mrs. Steven J. Goldstein
 Heather Gaffney & Jeffry Goliber
 Ms. Cynthia Goodrick
 Dr. & Mrs. James D. Goodspeed
 Mr. & Mrs. William B. Goodspeed
 Mr. and Mrs. Harvey Gordon
 Sarah Gordon and Martin Saad
 Mr. and Mrs. Bill Goshorn
 Ms. Mary Graham
 Marvin Grahn and Christine Hauke
 Allan and Sydel Grant
 Robert and Lois Grant
 Anne and Jeffrey Grausam
 Jere and Judy Green
 Mr. and Mrs. William Green
 Mrs. Patricia J. Green
 Ms. Paula Greeno
 Rick and Fran Greenup
 Mrs. Linda Gregory
 Ken and Joyce Greywall
 Rick and Lynn Grodek
 Martha Grogan and Ross Haller
 Mr. and Mrs. James H. Gross
 Mr. and Mrs. Raymond Gross
 Mr. and Mrs. John E. Grote
 Mr. Gerald Gruska
 Mr. and Mrs. Michael D. Gudenau
 Mr. Charles R. Haberlein, Jr.
 Samuel and Toby Haberman
 Mr. and Mrs. James Hackenberger
 Mr. and Mrs. Donald E. Hacker
 Juliet Hafford and Barbara Trippe
 Ms. Daneen Haggard
 Andrew and Sandra Hall

2017 Donors Continued

Contributors (\$100-\$249) continued

Mr. David A. Ham
Mr. Craig Hamilton
Mr. David J. Hamilton
Mr. and Mrs. Carl F. Hammond
Mr. Steve Hammond
Mr. and Mrs. James Hampton
Mr. and Mrs. Harold Hanna
Mr. & Mrs. Bradley T. Hanpeter
Mrs. Charlotte G. Hanpeter
The Happy Woman
Ms. Barbara Hardy
Mr. and Mrs. Dan S. Harkness
Mr. and Mrs. Paul Harkness
Perry Harmon and Kris Elliott
Kirk and Liz Harrington
David and Marcia Harris
John and Susan Harrison
Molly M. Harrison*
Mr. and Mrs. Jerome J. Harrison
Mr. and Mrs. Keith Hartwell
Mr. Tyler Hartwell
Mr. and Mrs. R. Tucker Hawkins
Kim and Grey Hayes
Michael and Jeanne Haynes
Mike and Julie Hays
Mr. Carl B. Headland
Healthcare Business Media, Inc.
Randal and Molly Heemstra
Mr. and Mrs. Jerry L. Heiman
Mr. and Mrs. James Heinzman
Scott and Catherine Heiser
David and Sharon Hendricks
Dennis and Lynne Hendricks
Susan Hendricks
James Hengelbrok & Mary
Haberland
Dr. and Mrs. Gregory L. Henry
Jim and Cheryl Henry
Mr. John Herbst
Mr. Joseph W. Heringlake
Drew and Linda Hess
Mr. and Mrs. Steve R. Hext

Charlie, Jill & Gretchen Himes
Mr. Timothy Hinckley
Lisa Hinkelman and Bob Heine
Mr. and Mrs. Warren K. Hinsch
Warren and Suzanne Hinsch
Ms. Caroline Hirth
Mr. and Mrs. William Hischke
Theresa Hitchens
Mrs. Carolyn B. Hobart
Mr. William A. Hoffman
Thomas and Geraldine Hogan
Dana Hokin and Robert Garvey
Gale Holcomb and Jennifer Reid
Craig and Pat Holmes
Mark and Marisa Holmes
Ken and Carol Holt
Mr. and Mrs. Ralph S. Hommel
Dr. and Mrs. J. Michael Hoog
J. Stephen and Leslee Hooper
Andrew and Catherine Horning
Bill and Barb Horning
Mrs. Georgina Hosmer
Dave and Mary Hovest
Mr. and Mrs. Michael R. Howard
Mr. Gilbert Hudson
Mr. and Mrs. C. Lee Huffaker
Mr. and Mrs. James E. Hullverson
Dan and Barb Hurlbutt
Ms. Brenda J. Husband
Ms. Amy Hutchinson
Mr. and Mrs. James R. Hutchison
Tom and Kathy Hy
Steven Hyde
Mr. Doug Ibold
Mrs. Ruth L. Iezzoni
Illinois Tool Works Foundation
Ivan and Mary Win Immink
Indian Beach Association
Bart and Gail Ingraham
Jerry and Carol Inman
Win and Kyle Irwin
Mr. James B Isabell
Dr. and Mrs. Paul Izenberg
Lary and Sarah Jackson

Mr. and Mrs. James G. Jackson
Mr. and Mrs. John P. Jackson
Mr. Clifford Jacobs
Kristen Jahoda and Adam Durst
Lee Jameson & Barbara Nelson-
Jameson
Mr. and Mrs. Chet Janik
Mr. and Mrs. David Janizek
Dr. and Mrs. Albert B. Janko
Mrs. Joan K. Janowsky
Douglas B Jester & Colleen Barry
Mrs. Barbara Jillson
Dr. and Mrs. Richard S. Johnson
Dr. and Mrs. Tom M. Johnson
James and Elaine Johnson
Mr. Robert H. Johnson
Mrs. Maria Johnson
J. Kay Johnston & Jeff Sanborn
Mrs. Marilyn D. Johnston
Bob and Sylvia Jones
Ms. Ann Jones
Ms. Louise Coleman Jones
Ms. Judy Jorgenson
John and Janet Juarez
Mike and Sarah Julien
Joe and Beth Junewick
Mrs. Annette Kandel
Ms. Angela Kandler
Mr. and Mrs. Robert F. Karner
Ms. Kari Karr
Mr. and Mrs. John Kasmersky
Ms. Deborah Kasperek
Mr. John H. Katt
Bonnie and Dick Kay
Paul and Yoka Kaye
Amy and Jim Keane
Michael and Mary Kedzierski
Ms. Grace Keeble
Mr. and Mrs. Scott Keller
Brooks and Shelly Kelley
Michael and Susan Kelley
Mr. & Mrs. Charles H. Kellogg, Jr.
Barbara Kelly & Ruth Frey
Janet Kelman and David Rein
Mr. and Mrs. Michael E. Kenney

Alisann and Chuck Kepler
Andrew Ketterer & Rebecca
Harris
Blake and Lynda Key
Mr. and Mrs. Richard F. Kiernan
Mrs. Jan Kiessel
Mr. James F. Kimpel
Mr. and Mrs. Raymond Kingsley
Dan Klein
Mr. David A. Klein
Christopher and Joan Kmotorka
Bruce and Barbara Knapp
Ms. Nancy Knight
Dale & Peggy Ethridge Koblenzer
Mr. and Mrs. Konrad D. Kohl
Mr. and Mrs. Lawrence D. Kohl
Mr. and Mrs. Douglas Kohlbeck
Mera and Hallie Kohler
Mr. Jason Kolb
Ms. Susan Konop
Mrs. Ruth Korzon
Mr. & Mrs. Bryane E. Kowalewski
Mr. and Mrs. Jeff Kozisek
Dr. David Kozy
Mr. Walter J. Kraimer
Mrs. Joan H. Kramps
Ms. Luanne Krantz
Mr. and Mrs. Charles Kraus
Robert and Anne Krebs
Margaret Kryda
Benjamin Kusner & Jack Bedell*
Ms. Luann K. Labian
Mr. Greg LaCross
Jim and Anita Lamont
Mr. and Mrs. Lawrence Lander
Mr. and Mrs. Jon M. Lane
Dick and Susan Lang
John and Joy Lang Anderson
Mr. and Mrs. Bruce D. Lang
Stephen LaRiviere & Jennifer
Yanover
Mr. and Mrs. Harry Larkin*
Mr. and Mrs. Thomas R. Larkin
Lynne and Robert LaSarge
Ms. Marilyn H. Latterman

Mr. and Mrs. Thomas E. Lauer
Tom and Pam Laureto
Mrs. Doreen A. Lawton
William and Barbara Lawton
Mr. and Mrs. Frederick Leaske
Dr. and Mrs. Russell A. LeBlanc
Dr. and Mrs. William J. Lee
Ms. Catherine D. Leidigh
Mr. and Mrs. George A. Lemcke
Jim Lemire & Denise Samuels
Michael and Teresa Lenhart
Mr. and Mrs. Dan Leppok
Mrs. Deloris Leppink
Mr. David Lerner
Mark and Lori Leugers & Family
Mr. Martin Leugers
Ms. Jennifer Leugers
Thomas and Diane Leugers
Skip and Liz Leupp
Gerald Levine & Sarah Pokempner
Ms. Ruth A. Lezotte
John and Cynthia Lhost
Ms. Nell Licklader
Mr. and Mrs. David L. Lillie
Lilly Endowment, Inc.
Mr. and Mrs. Lloyd Lindner
Art and Mary Link
Larry and Lorraine Liszewski
Little Garden Club
David Lobbog and Jane Neidhardt
Nick and Kathy Lomako
Chris and DawnMarie Lorentson
Staton and Carol Lorenz
Bill and Karen Lott
Mr. and Mrs. Richard A. Love
Ms. Mary C. Lukens
Mr. and Mrs. David A. Lund
Mr. Joel A. Lutz
John and Barbara MacDougall
Mrs. Ronna Maciejewski
Mrs. Esther M. Mack
Mrs. Suzanne C. Mack
Maria & Robert Mackenzie
Mr. and Mrs. E. Thomas Maguire
Mr. and Mrs. Peter S. Maher

Mr. and Mrs. J. Parke Malcolm
Ray and Penny Malcoun
Marlis Mann and Tom Skinner*
Augie, Kim & Kaia Manrique*
John and Maude March
Debbie Marciniak & David Shaltz
Barry and Debbie Marsh
Jerry and Martha Martin
Mr. Don Martinez
Mr. & Mrs. Robert R. Martinson
Mr. and Mrs. Richard J. Mashke
Kate Mason & Mary Lee Miller
Dr. Victor Mastaglio
Mr. and Mrs. Jerry May
Ms. Lisa May
Gary and Cheryl Mazurek
Mr. & Mrs. Michael P. McCalden
Mr. Woody McCally
Linda McCarthy
Mr. and Mrs. Richard McClear
Jill and Mike McDonnell
David and Catherine McDowell
Mr. and Mrs. Randall McElrath
Harold and Kanda McKee
Bob McKelvey
Mr. & Mrs. Charles D. McKenna
Bill McKinley and Judith Briggs
David and Leslie McKinley
Tom and Shirley McLenithan
Larry McMahon & Linda Anderson
Mr. and Mrs. S. Craig McMillan
Mrs. Nancy McNamara
Paul and Julie McNeilly
Bob and Sukie McNutt
Ms. Gaytha McVay
Mr. and Mrs. Ken Medaris, Jr.
Mr. and Mrs. George N. Meeker
Mila and Warren Meeks
Rob and Anne Meermans
Greg and Linda Meide
Mr. and Mrs. John W. Melstrom
Brian D. Melzian, Ph.D.
Etta Menlo and Chris Laport
David Mertz and April Stuck
Mr. and Mrs. James P. Meyer

Mrs. Ann P. Meyers
 Pat and Laura Michael
 Nancy Mikolaitis & William Hinds
 Vince and Jamie Mileto
 Dennis Miller & Daina Briedis
 Dr. and Mrs. Keith W. Miller
 Gerald and Rita Miller
 Greg and Suzanne Miller
 Mr. and Mrs. Richard Miller
 Phillip and Ayumi Miller
 Mr. and Mrs. Robert G. Milne
 Susan and David Milne
 Mr. and Mrs. Charles Moffett
 Mr. and Mrs. Donald Molten
 Ms. Jennifer R. Moore
 Mr. and Mrs. Preston D. Moose
 Corey and Sarah Morgan
 Mr. and Mrs. Michael D. Morris
 Gary A. Morrison
 James Morrison
 Mr. and Mrs. James M. Moskalik
 Mr. and Mrs. William Muempfer
 Mr. and Mrs. Timothy Mulherin
 Mr. & Mrs. Michael F. Mulvaney
 Munson Medical Center
 Sharon Murphy & Sharon Montonye
 Ken and Pat Musson
 Dennis and Leigh Ann Naas
 Si Nahra & Judy L. Mardigian
 Navigant Consulting, Inc.
 Mr. Charles Needham
 Mr. and Mrs. John D. Nehil
 Tania and Carter Neild
 Mr. John A. Nelson
 Mr. & Mrs. Alfred K. Neugebauer
 Mr. and Mrs. John G. Neuman
 Ms. Cathy Newkirk
 Mr. and Mrs. Ronald N. Nichols
 David Noling and Victoria Bailey
 Mr. Lawrence J. Noling*
 Paul and Christine Norman
 Northport Pottery
 Ms. Cynthia Nowak

Dr. and Mrs. C. Thomas Nuzum
 Jane and Jason Nuzzo
 Diana and Marc Oberschulte
 Ms. Emily O'Brien
 Patrick and Amy L. O'Brien
 Ms. Elizabeth Och
 Pat and Marlene O'Connor
 Maria and Dave O'Donnell
 Charles and Sara Ofenloch*
 Ms. Susan Olcott
 Mr. and Mrs. James Oliver
 Jim Olson and Judy Busma
 Mr. and Mrs. David D. Olson
 Steve Olson and Lynn Wilsher
 Mr. and Mrs. Michael Oltersdorf
 Dr. Robert and Zibby Oneal
 Ms. Ellen F. O'Neill
 Nancy and Bill O'Neill
 Stephen and Ami Orr
 Oryana Food Cooperative, Inc.
 Ms. Margaret A. O'Toole
 Mr. and Mrs. Robert E. Overmyer
 Ms. Marie Owen
 Russ and Jane Packard
 Mr. and Mrs. G. Bruce Papesh
 Mary Anne and Bob Parks
 Sandra and Ralph Parvel
 Mr. Thomas Patton
 Don and Pat Paulsell
 Mr. and Mrs. Thomas Pavelka
 Kim Pawlick
 Mr. William D. Peace, Jr.
 Mr. Jerry R. Pearson
 Mr. and Mrs. William F. Peck
 Mr. and Mrs. Henry Peet
 Ms. Kathryn Penfold
 Mr. Blake Perrigo
 Elmer and Ruth Peterman
 Dr. and Mrs. Nathaniel A. Peters
 Thom and Rachelle Peters
 Gerald and Mary Peterson
 Mr. and Mrs. John J. Peterson
 Mr. Erik Peterson
 Ms. Patricia Petrat
 Mr. Randy Petresh*

Mrs. Marcia G. Peven
 Larry and Rebecca Peyton
 Lorna and Ellard Pfaelzer
 Tom and Christine Pfennig
 Ms. Rachel Pham
 Dennis Phillips
 Mary and Ben Phillips
 William and Deborah Pillow
 The Piskor Family
 Janette and Allen Pivitt
 David and Ann Podeszwa*
 Gary and Laurie Poeppelman
 Mr. and Mrs. David M. Pohlod
 Ron and Marilyn Pokrak
 Cindy and Ovide Pomerleau
 Thad and Nancy Popa
 Steven and Janet Popper
 Mark and Manie Powell
 Kurt and Maria Pregitzer
 Brad Price & Barbara Kalchik-Price
 Mr. and Mrs. James D. Price
 Gary Pritchard and Chuck Novak
 Dr. David and Deborah Pruis
 Jim and Mary Pulsifer
 Mrs. Bette M. Puschel
 Jack and Diana Putman
 Mr. and Mrs. Jack S. Putnam
 Bill and Susannah Quigley
 Mr. and Mrs. Robert W. Quinn
 Mr. and Mrs. Mark Raaymakers
 Royce Ragland and Ken Bloem
 Mr. Robert A. Raines
 Ms. Laura Ramus
 Bill Rastetter and Cary Weed
 Mrs. Charlotte Read
 Mr. and Mrs. Thomas D. Reay
 Steve and Connie Reddicliffe
 Mat and Nancy Reeves
 Mr. and Mrs. Ronald L. Reimink
 Ellen and John Reister
 Mr. and Mrs. Scott Rempala
 Mark and Krista Rensland
 Mark and Suzanne Reynolds
 Mr. and Mrs. Ronald G. Rhoads

Rob and Marylou Riday
 Mrs. Louisa Ridgway
 Terry and Debra Riedinger
 Ms. Carol E. Rigg
 Bill and Coralyn Riley
 Gary and Pat Ringnald
 Gary and Anita Risbridger
 Charles and Donna Ritter
 Mr. and Mrs. W. Scott Robertson
 Mr. and Mrs. Tim C. Rod
 Martha and Dan Rogalny
 Ann Rogers
 John and Lisa Rogers
 Mike and Julie Rogers
 Steve and Sue Rohde
 Mr. and Mrs. E. David Rollert
 Mr. and Mrs. Robert Roloson
 Mr. Edward Roloson
 Mr. and Mrs. Stephen E. Root
 William and Pamela Rosenberg
 Cindy and Ken Rosiek
 Mike and Laura Rothermel
 Rick and Cat Ruffner
 Mrs. Amy Evans Rullo
 Running Dog Studio
 Dean Rust and Merry Vance
 Ms. Ariel Ruth
 Mr. James E. Ryan, Jr.
 Steve and Kristen Ryder
 Arnold Sameroff and Susan McDonough
 Ted and Sally Samples
 Dr. John R. Sanborn
 Saving Birds Thru Habitat
 Andy and Susan Schaedel
 Mr. and Mrs. Peter H. Schaff
 Mr. and Mrs. John J. Schaffer
 Mr. & Mrs. Wendell D. Schaller
 Mr. Michael E. Scharpf
 Gerald Schatz & Barbara Conley
 Mr. and Mrs. Timothy L. Schaub
 Dr. and Mrs. Richard J. Schilling
 Mr. and Mrs. Karl Schlabach
 Mr. and Mrs. James E. Schlueter

Folkert Schmidt & Kathleen Sullivan
 Ms. Hope Schmidt
 Mark and Susanne Schneider
 Michael and Betsy Schneider
 Mrs. Marilyn M. Schneider
 Mr. and Mrs. Robert Scholz
 Scott D. Schrager & MaryAnne Ford
 Jim and Margaret Schrimpf
 Ms. Karen Schulte
 Ms. Monica Schultz
 Rob Schulz & Kelly Summerwill
 Wayne and JoAnn Schulz
 Richard and Nancy Schwab
 April and James Schwaegerle
 James Schwantes & Judy Reinhardt
 Mr. and Mrs. John A. Scott
 Leonard and Martha Seale
 Ms. Barbara P. Seaman
 The Sehnert Family
 Jeff and Nita Send
 Jack Seymour and Margaret Ann Crain
 Mr. and Mrs. James R. Shannahan
 Elise Shatto
 Duane and Margaret Shaw
 Mr. Michael D. Shea
 Mr. and Mrs. Carl F. Shelton
 Mr. and Mrs. Edson P. Sheppard
 Mr. and Mrs. John A. Shilts
 Robert and Linda Shirley
 Mr. and Mrs. Fred B. Shoaff, III
 Mr. John Shoemaker
 Mr. James C. Shook
 Bill and Stephanie Sick
 Mr. and Mrs. Dan Sifferlin
 Dr. & Mrs. Daniel Silvasi & Family
 Mr. and Mrs. Clint A. Simko
 Mr. James R. Sitko
 Ms. Anne Slater
 Ted and Kelly Slater

Bob and Randi Sloan
 Mr. and Mrs. Larry L. Smith
 Mr. Greg Smith
 Mrs. Judith D. Smith
 Randy and Marianne Smith
 Mrs. Betty W. Smykal
 Daniel Snyder and Ann Rich
 Marcia and Joe Sojkowski
 Stephanie and Eric Soller
 Mrs. Greta Solomonson
 Mr. & Mrs. Robert W. Soutas-Little
 Mr. and Mrs. Rodney G. Southwell
 Ms. Christine Sow
 Jeffrey and Janet Spaeth
 Mr. and Mrs. Donald E. Spinniken
 Mrs. Mary B. Sposito
 Drs. Beverly & R. Lawrence St. Clair
 Mr. Dave Stachnik
 Fred and Joyce Stackable
 Keller and Mary Staley
 Capt. and Mrs. John P. Stamos
 Darlene Stanley & Harry Zoccoli*
 Mrs. Gloria L. Stapp
 Stardust Memorials
 Mr. David Steel
 Dr. & Mrs. Michael G. Steichen
 Polly and Jacob Stein
 Dennis Marchese & Cheryl Stereff
 Lea Ann Sterling
 Scott and Ann Stewart
 Mr. and Mrs. Phillip Stinson
 Mr. Timothy L. Strawbridge
 Dr. and Mrs. Stephen Strobel
 Ms. Barbara Stuber
 Jill Stuhldreher
 Dr. and Mrs. Spiridon N. Suciu
 Mr. and Mrs. Gregory Suhajda
 Bill Sulau & Kay Nolen

2017 Donors Continued

Contributors (\$100-\$249) continued

Mr. and Mrs. John F. Sullivan
Mr. Jerry Sura
Wayne and Pat Swallow
Mary and Bill Swift
Phil and Denise Swy
Mr. and Mrs. Stephen Syrjamaki
David Tabolt & Lisa Genesen
The Taglauer Cabin
Mrs. Phyllis L. Takayama
Mr. and Mrs. Peter Taylor
Mr. and Mrs. William M. Taylor
Mr. & Mrs. Ben A Tefertiller, Jr.
Mrs. Nancy L. Temple
The Gunzenhaeuser Family
Thomas H. Thibault & Ruth
Winter
Drs. Philip S. Thomas & Henrietta
Barnes
Mr. William G. Thomas
Ms. Susan M. Thomas
Mrs. Virginia A. Thompson
Ms. Connie Thompson
Ms. Kate Thornhill
TIAA Charitable
Erin Trame and Carrie Turner
Mr. and Mrs. Mark Trapchak
The Troy Foundation
Trucco Construction Company
Adam and Briana Truckey
Mr. and Mrs. Tom Trumbull
Daniel and Lisa Turner
Ms. Dori Turner
Mr. and Mrs. Gary B. Twomey
Dr. John Ulrich, Ph.D LLC
Mr. and Mrs. John Ulrich
Mrs. Carole A. Underwood
Martha Van Eenenaam-Iwanicki &
Tom Iwanicki
Lawrence Van Egeren
Mr. and Mrs. Frans Van Liere
Bill and Gail Van Wie

Ms. Susan M. Vanaelst
Scott and Marie Vander Linde
Mr. & Mrs. Michael A. VanRiper
Dr. and Mrs. Samuel Vasiu
Alex Vendramini
Mr. Frederick von Stade
Mr. & Mrs. Ralph von Waltheusen
The W.W. Group, Inc.
John and Carrie Wadas
Mr. and Mrs. Brent Wadsworth
Mr. Jon F. Wadsworth
Ms. Leslie J. Wadsworth
Peter and Diana Wagner
Erich and Susan Walder
Mr. and Mrs. John W. Waldrop
Gerald and Carolyn Wallace
Ms. Lorri Wallet
Bob and Cyndy Walsh
John and Gina Walsh
Mr. and Mrs. Richard W. Walter
David and Margaret Walton
Mr. and Mrs. William J. Warren
Waste Management
Mr. and Mrs. John B. Watkins, Jr.
Price and Jane Watts
Mark and Lisa Weadick
Ms. Mary K. Weadock
Mr. and Mrs. Allen Weaver
Lorraine Weber and Harry Lister
Mr. & Mrs. James R. Weckenbrock
Steve and Nancy Wegienek
Russell and Dolores Welchli
Stephen and Kathleen Weller
Dr. William W. Wells
Thomas and Sandra Wertime
Mr. and Mrs. Peter F. Westerman
Mr. and Mrs. Bruce J. Westover
Char Bickel & Steve Wetherbee
Whaleback Inn
Dennis and Erin Whalen
Mr. Gil Wheeler
Chuck and Janet Whetsel
Stuart and Suzanne White

Mr. and Mrs. Douglas Whitley
Ms. Kathleen Wichman
Mr. and Mrs. John Wickland
John and Kate Wiegand
Ms. Linda Wiersema
Ms. Ginger Wilber
Mr. and Mrs. Don G. Wilcox
Mr. and Mrs. Timothy C. Wilcox
Leslie L. Wilde
Mr. and Mrs. Stephen Wilkerson
Dr. and Dr. Michael A. Willett
David and Roberta Williams
Mr. and Mrs. Dennis M. Williams
Ms. Clara R. Williams
Ms. Suzanne Williams
Williams and Bay Pumping
Services
Jack and Angene Wilson
Katherine and Brian Wilson
Mike and Ruthanne Wilson
Mr. and Mrs. Richard N. Wilson
Ms. Kathryn I. Wilson
Mr. & Mrs. Mark H. Windemuller
David and Christine Winterson
Pete and Ginna Woessner
Eric and Dorothy Wolff
Dr. Randall Wolthuis
Ms. Shirley J. Woodard
Dr. John R. Woods
Mr. and Mrs. John Woomey
Elli A. Workum & Michelle Nader
Mrs. Marilyn Wotring
Curt and Cindy Wright
David D. Wright & Julie Quinn
Jeff and Shirlene Wuepper
Marcy Wydman
Mr. and Mrs. Jeffrey Wyler
Jim and Kit Wysor
Denise Wyzwany
Mrs. Agnes L. Yalda
Dr. and Mrs. Daniel Yamshon
Jeanne Dolson and Michael Yocum
Fred Young and Julie Youmans
Philip and Susan Zaborowicz
Mrs. Ashley Zak

Howard and Leslie Zemsky
Ms. Karen E. Zerrenner
Ms. Jeanie Ziebell
Catherine Zimmerman
Mr. John C. Zimmerman
Scot and Elizabeth Zimmerman
Paul and Imogene Zimmermann
Miss Mary Helen Zink
Mr. and Mrs. John C. Zink
Mr. and Mrs. Dan Zolik
Bill Zolkowski and Susan Hawley
Barb Zupin and Tom Gardner
Rick and Terry Zweering

Supporters (\$60-\$99)

Anonymous (I)
Ken, Cheryl and Zach Adams
Mr. & Mrs. Weston W. Adams, III
Valerie and Gary Anderson
Adam and Mary Arents
Dr. Edwin A. Arnfield
Mr. and Mrs. John Ashman
Mr. and Mrs. Richard Austin
Terrance and Sandra Bacon
Greg and Chris Bassett
Mr. and Mrs. Gerald G. Battle
Sally M. Bersot
Mr. and Mrs. Robert H. Birch
Mr. and Mrs. Lowell O. Bird
Theron and Cynthia Blakeslee
Mr. and Mrs. Robert Blohm
Ms. Barbara Bloomer
Rick and Kat Bodette
Mr. Linton Bodwin
Mr. and Mrs. Milton C. Boesel, Jr.
Mr. and Mrs. John W. Bogley
Mrs. Robin Bolig
Mr. and Mrs. Robert K. Bosch
Peter Bottenhorn
Merri Lynn Bouckaert & Paul
Peschel
Mrs. Ruby Brach
Mr. and Mrs. David Bradshaw
Mrs. Barbara C. Braly
Jeffrey Brown

Mrs. Randy Brown
Mr. and Mrs. Thomas B. Brush
Mr. and Mrs. Marlin G. Bussey
Field and Sandy Carden
Mrs. Joan Carlson
Mr. & Mrs. Thomas H. Cartwright
Mat and Jessica Cashman
Mrs. Jean A. Castle
Mr. Chas Catherman
Ms. Kathy Cavanaugh
Mr. Joseph Cherup, Jr.
Marc and Jenny Chipault
Jessica Christensen & Kevin Coles
James E. Cleworth
Jim and Karen Click
Joe and Barbara Coffey
Maddie Bulkley & Brian Conkey
Kevin and Barbara Cox
Bret and Molly Crimmins
Mr. and Mrs. Robert Cullum
William and Deborah Dacey
Mrs. Marti Daniel
James and Kathleen Datema
Mr. and Mrs. Howard Datema
Stephen and Consiglia Dawson
Mrs. Barbara M. Deerhake
Mrs. Diane P. DeHuff
Charlie DeSando & Ellen Gilligan
Mr. and Mrs. Mark J. DeVirgilio
Mr. and Mrs. Ross Deye
Mrs. Rita M. Dick
Ms. Caroline Dieterle
Mr. and Mrs. William P. Dillon
Mr. and Mrs. Larry L. Dodd
Tim Donaghy and Margy Klesney
Mr. and Mrs. Falk Dorn
Mr. Frederick Dose
Mrs. Nancy D. Downs
Russell Dzuba and Karen Kirt
Mr. & Mrs. Robert C. Edmundson
Ms. Kathy Egan
Mr. and Mrs. John A. Ellis
Mr. and Mrs. J. Kris Ernst
Ms. Kathy Evaldson

Ms. Sally M. Evaldson
Mr. and Mrs. Peter W. Fabien
Dr. and Mrs. James P. Fadely
Ms. Susan Grogan Faller
Carolyn and Dave Faught
Mr. Robert W. Faull
Mr. and Mrs. Ronald E.
Fornowski
Ms. Christiane French
Ms. Ruth Frey
Dr. Bruce Galler
Al and Karen Gallup
Mr. and Mrs. Gary J. Gallup
Mr. and Mrs. Lewis G. Gatch
Ms. Mary Gibb
Mr. and Mrs. John E. Gideon
Mr. Howard Goldman
Victor and Denice Goldschmidt
Mr. and Mrs. Jay Goodman
Mr. and Mrs. Thomas Green
Elinor Greener & Cynthia G.
Theodoros
Mr. Robert S. Grooters
Mr. Rick Hackbarth
Ms. Gail Hastings
Mrs. Wynn Hausrath
Joel and Mimi Heberlein
Deborah Hecht and Joseph Falik
Mrs. Elisabeth Heikel
Mr. and Mrs. Ward Heine
Paul and Meredith Henley
Maureen and Jens Hensel
Barbara Henshaw
John D. and Ardis Herrold
Hillside Homestead
Tom Hinsberg & Connie Soma
Herb and Jean Holdwick
Ms. Natalie Homuth
Hop Lot Brewing Company
John and Jean Humble
Mrs. Alice S. Hunt
Shelley and Ted Hutchinson
Mike and Carol Hypio
Mr. and Mrs. Bruce C. Jacobsen
Michael and Kristen Janowicz

Brent and Debra Jeffers
 Ms. Sue Jennings
 John E. Johnson
 Jennifer and Greg Johnstone
 Douglas and Ann Julien
 Mr. and Mrs. Allen S. Juris
 Mr. and Mrs. James H. Kabcenell
 Mr. Jonathan Z. Kamholtz
 Mrs. Louise Kane
 Christopher Kantner & Cynthia
 Burger
 Mrs. Jane Keen
 Liz Ketterer and Tom Balazs
 Bob and Karen Kipp
 David and Jennifer Kirchgessner
 Mr. and Mrs. David Kirshenbaum
 Dr. and Mrs. Henry Klugh
 Milton Knight
 Gerald and Ruby Kowalski
 Gene and Joan Kufskie
 Marjorie and Terry Kukor
 Robert Kurtz and Molly O'Toole
 Lynn Lanese
 Mr. Gregg LaPore
 Jamie and Betty Leanderson
 Mr. and Mrs. George Lee
 Dr. Jeffrey G. Leflein
 Jim and Nancy Lewis
 Mr. and Mrs. Gene Lewis
 Ted and Pat Ligibel
 Mr. Brian Liljeblad
 Ms. Nancy J. Lindeman
 Mr. and Mrs. A. Lynn Livingston
 Ms. A. Catherine Look
 Ms. Erika Lund
 Mr. Kirk A. Lutz
 Mr. and Mrs. Kenneth Marek
 Mr. and Mrs. Thomas S. Markus
 Amy Marowitz & Ronald Kramer
 Pat McCool & Maureen Penfold
 Jack and Becky McFellin
 Ed McInnis & Patty Payette
 Murray and Pat McKean
 Mr. Mike McKeough
 Philip and Ann Mease

Mr. Larry Meier
 Amy Middleton & Therese Durkin
 Mr. and Mrs. Larry J. Miller
 Dave and Joy Morgan
 Susan Muenzer and Craig Nilsson
 Pat and Meridith Mulcahy
 Ms. Susan Murchie
 Mr. and Mrs. Donald H. Myers
 Needlepoint North, LLC
 John Niles
 Denny Nisch
 Omena Women's Club
 Mr. and Mrs. William J. Orcutt
 Jane and Pat O'Rourke
 Ms. Ann Orwin
 Patrell-Fazio Family
 Mr. and Mrs. William D. Perkins
 Mr. and Mrs. William Peterson
 Point Sunny Side Up LLC
 Chris and Kathryn Preston
 Pat and Dan Pruis
 Dr. John Putz
 Dr. Robert A. Raines, Jr.
 Mr. & Mrs. Frederick W. Reeves
 Mrs. Dianna Reynolds
 Chuck and Kay Robertson
 Dr. and Mrs. Albert D. Rollings
 Mr. Greg Rose
 David and Lynn Ruschhaupt
 Mrs. Sally Sanfield
 Mr. and Mrs. Larry D. Sanford
 Mr. Zachary E. Savas
 Robert and Elaine Schneider
 Mr. Russell A. Scholtens
 Ms. Barbara A. Schwartz
 Rick and Karen Seefelt
 Mr. and Mrs. Thomas A. Sexton
 Linda and Jim Shad
 Mr. Michael S. Sherry
 Mrs. Mary A. Shiner
 Mr. and Mrs. John L. Shoaf
 Ms. Janet Shroyer
 Mr. Jack Siemans
 Mr. and Mrs. Ernest H. Smith
 Mr. and Mrs. Mark R. Smith

Richard and Patricia Smith
 W. Dale Smith
 Ms. Elizabeth Sonnega
 Jane and Gordon C. Spink
 Ms. Beverley Spork
 Mrs. Gretchen K. Sprout
 Mrs. Theresa J. Stamos-
 Underwood
 Drs. Richard and Linda Stanford
 David and Toni Stevenson
 Mrs. Barbara R. Stevenson
 John and Margie Stoller
 Todd and Janet Stone
 Ms. Carolyn Strand
 Mr. and Mrs. William B. Strubbe
 Mr. and Mrs. Thomas Sutter
 Mr. Terrence M. Sutton
 Jim and Penny Szczechowski
 Mr. Craig Tiggleman
 Timberlee Property Owners, Inc.
 Mr. and Mrs. Roger L. Trim
 Ted and Patti Ulisse
 Dayna and Rody Valpey
 Dr. and Mrs. James P. Varley
 Ms. Angela Verbrugge
 John and Marsha Vingsness
 Mr. and Mrs. Peter Visser
 Mr. Joe Walacavage
 Mr. and Mrs. Thomas J. Wall
 Ms. Tani Watkins
 Deborah E. Welsh
 Mr. and Mrs. John R. Williams
 Williams Chevrolet - Honda
 Ken and Brigid Willis
 Mrs. Ethel M. Wills
 Mr. and Mrs. Colby Wilson
 Mr. William P. Winslow
 Mr. and Mrs. James D. Wirt
 Mrs. Jane Wood
 Edward and Karen Woolsey
 Ms. Wendy Jo Wyatt
 Patti Yauck
Subscribers (\$59 & under)
 Anonymous (3)
 Sue and Harold Adams

Ms. Gloria Albrecht
 Arnold and Terrie Allemang
 Mr. and Mrs. George D. Allen
 Mrs. Beverly D. Almquist
 Ms. Cheryl Ames
 Mr. and Mrs. Philip R. Andrus
 Mr. and Mrs. Larry L.
 Andrykovich
 Ms. Diane Archer
 David S. Arends
 Mrs. Mary Ann Arvo
 Mrs. Gwen Baarstad
 Steve and Jackie Baase
 Miriam Nancy Taschner Bach
 Mr. and Mrs. Joel Baillie
 Richard and Dana Balandier
 Ms. Sarah Baldwin
 Donald and Mary Pat Balthaser
 Doug and Becky Barnaclo
 Bob and Maryann Barnes
 James and Brenda Barnes
 Mr. and Mrs. John J. Barnes
 Theresa & Bart Barr
 Anthony Barst
 Mr. and Mrs. Bryan Barus
 Jodie Bathish
 Mr. and Mrs. Terry Baumann
 Pat Bazley
 Susan Ann Beebe
 Wendy Bell
 Mr. and Mrs. William Bellinger
 Mrs. Joan Bensley
 Mr. Allen Berg
 Ms. Nancy Beskin
 Loren and Helen Bethke
 Bill and Carole Betts
 Ms. Sandra M. Biagini
 Ms. Heidi Biederman
 Greg Binsfeld
 Ethel and Keith Birchler
 General and Mrs. Brian Bishop
 Jeff and Cindy Black
 Mr. and Mrs. Eric Blakely
 Mr. and Mrs. Paul Blakeslee

Ms. Mary Blandin
 Tim Boland & Laura Coit
 Mr. and Mrs. John C. Bollman
 Charles and Janis Bond
 Ms. Becky Bond
 Mr. Robert H. Bonner
 Mr. and Mrs. Jon R. Boulton
 Mr. W. Wilson Bradburn
 Caroline, Donna & Curt Braden
 Mr. and Mrs. Mark Brant
 Roger D. Bratcher
 Mr. and Mrs. Terry Breen
 Michael and Joan Brennan
 Mr. and Mrs. Robert Brenner
 John and Patsy Bressler
 Ms. Barbara Brewer
 Mr. and Mrs. Robert T. Brick
 Mr. and Mrs. Thomas G. Briggs
 Mr. and Mrs. Preston Britner
 Austin and Lucy Brooks
 William and Alta Brown
 Mr. and Mrs. Larry Brubaker
 Mr. and Mrs. Thomas A. Bruce
 Joan and Andy Brush
 Mr. and Mrs. Ronald Bryant
 Carl and Denise Bulat
 Mr. and Mrs. Charles J. Bumb
 Ms. Jenna Burch
 Michael Burnett
 Brendan Burrows & Ann Derrick
 Tim Calkins and Carol Saltoun
 Ms. Ellie Canfield
 James and Elisa Cantwil
 Thomas and Deborah Carmazzi
 Eric and Jenny Carpenter
 Frank and Donna Carrico
 Jeff and Barbara Carrico
 Paul and Susanne Cartman
 John and Barbara Carton
 Ms. Rosemary Cary
 Mr. William S. Casier
 Jim and Margaret Cavender

William Champion & Beverly
 Pylman
 Mr. Clyde P. Chard
 Jim and Kay Charter
 Ms. Sarah Chenault
 Mr. & Mrs. Alfred F. Chimoski,
 Jr.
 Ms. Deborah Ciavattone
 Donald and Barbara Clay
 Michael and Jodi Clay
 Mrs. Sally A. Cliff
 Judge Avern Cohn
 Carey Colburn
 Ms. Edith A. Cole
 Ronald and Sally Cole-Misch
 Peter and Carmelita Collins
 Mr. and Mrs. John Conder
 Kyle & Elizabeth Connolly
 Ms. Laura Conrad
 Ms. Melissa M. Conroy
 Patrick and Martha Conway
 Mr. and Mrs. Albert C. Cook, III
 Mike and Karen Coquillard
 Peggy Core
 Ms. Carol B. Cottrell
 Mrs. Dorothy J. Coulter
 William and Kristin Crackel
 Romona and Bill Crain
 Steve and Chris Crandall
 Mr. and Mrs. Leslie Crater
 Dean and Lori Crutchfield
 Carol and Dan Cruz
 Charles and Patricia Curmi
 Garry and Marlene Curtiss
 Jim and Diana Cusser
 Mr. and Mrs. William G. Cutler
 Romesh and Bernadette Daftary
 Connie Dahm
 Richard and Mary Daly
 Michael Danaher

2017 Donors Continued

Subscribers (\$59 & under) continued

Alexandra and Francis Darigan
Mr. Henry Darlington
Mr. Michael Daus
Mr. Howard B. Davis
Ms. Marjean W. Davis
T. Jeff Davis & Ken Smith
Mr. James Deaton
Ms. Michelle DeBeaussaert
Mrs. Sherry A. Deeg
Ron and Rebecca Deering
Mr. and Mrs. Cormac B. Delaney
Ms. Dorothy M. Delehanty
Ann Dennis
Dennis Hurst & Associates
Dennis and Ruth Despones
Ms. Margaret A. Detrick
Mr. and Mrs. Roland DeYoung
Joey and Shelli DiFranco
Ms. Susan DiFranco
Mr. James Disher
Tom and Janet Dohr
Cheryl Donakowski
Dr. and Mrs. Stuart L. Doneson
Jill Dooley and Annette Brown
Mr. & Mrs. Andrew Dotterweich
Jason and Stephanie Doublestein
Ms. Carol Douglas
Ms. Emily Douglas
Mrs. Janet Dow
Jennifer and Bill Doyle
Ms. Mary S. Doyle
Stephen and Michelle Doyle
Tim and Pat Duff
Mr. Neil Duffy
Greg and Mindi Dugard
Mrs. Bette D. Dugger
Mr. and Mrs. John Dumala
Steve and Wendy Dumas
Mrs. Lucille C. Dumbrill
Curt Wong and Denise Dunn
Mr. and Mrs. Edwin R. Dunn

Thomas Earwood & Amy Radford
Mrs. Nancy Eaton
Mike and Amy Ebert
Terrell and Pat Ebright
Ms. Barbara L. Eddinger
Paul and Shirley Edmond
Gayle E. Egeler
Mr. David W. Egeler
George and Mary Eggenberger
Mark Eidelson & Caryl Markzon
Charles and Margaret J. Emery
Ms. Jody Engel
Gerri Erickson & Margaret Platner
Roy and Alice Erickson
Mr. and Mrs. Gary Eubanks
Mark and Annette Evans
Mr. and Mrs. Thomas F. Evans
Rob Stow and Jeremy Evans
Mr. and Mrs. Roger Faber
John Fahey and Kelly Kin
Matthew and Katherine Fain
Mr. Andrew Fessenden
Warren and Cathy Feyt
Ms. Stephanie J. Fiebing
Paul Fields and Deborah Spathelf
Mrs. Judith M. Filice
Ms. Carolyn Fineran
Mr. and Mrs. D. James Firestone
John and Cynthia Fischer
Dave and Jane Fisher
Mr. and Mrs. Jay H. Fisher
Ms. Janet Fisher
Matthew and Kelli Fitzgerald
Mr. Matt Fitzke-Loll
Mr. & Mrs. Terence R. Flanagan
Nick and Elaine Fleezanis
Bob and Sandra Foote
Mr. and Mrs. Fred C. Ford
Jeff and Nancy Forrest
Mr. and Mrs. W. Robert Foskett
Mr. and Mrs. James Fowler
Lynn and Vicki Francis
Bruce and Janeen Frank

Laura Franseen & Norman Kjome
Mr. and Mrs. Scott Fray
Mary and Tom Fuller
Mrs. Shirley A. Gain
Mr. & Mrs. James A. Gardzulis, Jr.
Mr. Austin Garfield
Greggory and Amy Garrett
Mr. and Mrs. Peter Gast
Mrs. Lynne I. Gauthier
Mrs. Jacqueline Gazoul
Paul and Ruth Geil
David and Sharon Geisler
Ms. Florence B. Gerndt
Mr. Michael Gibb
Michael and Lena Gionnette
Mr. and Mrs. Lloyd N. Girbach
George and Pat Giza
Mr. Gerald Glencer
Mr. and Mrs. Charles Godbout
Mr. Richard Golab
Mr. and Mrs. Dennis Golec
Mr. and Mrs. Norman Golm
Mr. & Mrs. Philip W. Goodspeed
Mr. and Mrs. Philip W. Goodspeed, Jr.
Mr. and Mrs. Helmut P. Goral
Lisa and Randy Goranson
Ms. Diane E. Gordon
Nancy Gotfredson
Dr. and Mrs. Jack W. Gottschalk
Ms. Barbara Graham
Mr. and Mrs. James R. Grant
Ms. Diane Grauer
Great Lakes Sailing Company
Bridget Greenan and B. Regan Patrick
Richard and Patricia Greene
Mr. and Mrs. Edward W. Greeno
Ruth and James Grey
William, Anne, Robert & Nancy Gribb
Mr. and Mrs. Robert C. Grigereit
Margaret Groeber & Peter McCann
Mr. Tom Grogan
Mrs. Barbara L. Grosmark

Thomas Guback & Sylvia Linde-Guback
Mr. and Mrs. Mark Gustafson
Thomas and Victoria Gutowski
Mr. William E. Habich
Mr. and Mrs. Ronald L. Hackleman



Photo by Marilyn Keigley

Mr. and Mrs. Thomas Hackney
Bryan and Jessica Hagle
Ms. Karen Hague
Dr. Jessica Hale
Gloria Halligan
Mrs. Kyle Halstead
Mr. Frederick Hambly
Ms. Krisy Hammond
Mr. and Mrs. John J. Handloser
Mr. and Mrs. James A. Hands
E. Jay Hansen
Dr. and Mrs. Bruce W. Harlton
David and Elizabeth Harnadek
Mr. and Mrs. James R. Harrelson
Billie and John Harrison
Dr. and Mrs. Robert H. Hartwig
Dr. Dick Hasbany
Ms. Joanne Hass

Robert Hauske
Ms. M. Lynn Hayes
Lisa and James Haynes
Dennis and Eileen Hays
Ms. Peggy Healy
Mr. & Mrs. Clarence E. Heerema
Jim and Jacque Heidamos

Ms. Jane Hollabaugh
Mr. J. Edward Hollender
Ms. Jane L. Hollon
Amanda Holmes & Dan Stewart
Mr. Henry Holt, III
Michelle Homa
Michael and Colleen Hoog
Mr. Adam Hoog
Jay and Joan Hook
Tom and Patty Hopcian
Ms. Gayla Hoxsie
Mrs. Kay B. Hughes
Douglas and Cindy Hull
Ms. Hester A. Hull
Ms. Hilary Hunt
Mr. and Mrs. Dennis Hurst
Dr. Douglas B. Hutchison
Ms. Katherine Ieremias
Ms. Mary Kent Ireland
Thomas and Lynn Irvine
Ms. Dianna Ives
Rick and Melissa Jackson
Mr. and Mrs. John T. Jameson
Paul and Barbara Janowiecki
Mr. and Mrs. William E. Jansen
Amy and Blake Jeffers
Bob and Karen Johnson
Mr. and Mrs. Edgar F. Joppich
Richard Jorgensen
Kelly and Jason Joseph
Mr. and Mrs. William C. Joy
Mr. James E. Joyce
JRB Personnell, LLC
Ms. Edie Juno
Sarah and Tom Juntune
Joan Kalchik & Michael Tenbrock
William and Debra Kandler
Mr. and Mrs. James L. Kareck
Ms. Barbara Kasoff
Mr. and Mrs. Daniel Keefe
Phillip Keeling & JoAnn Carlson
John and Lana Keith
Allison and Alfred Kellogg
Mr. and Mrs. Kent B. Kelly
Mr. and Mrs. Michael J. Kelly

Mrs. Anne W. Kelly
 Mr. Gregory Kenny
 Mr. and Mrs. Rodney Keteyian
 Mr. and Mrs. Steven W. Kilgren
 Gerald and Michaline Kilts
 Ms. Carol Kindt
 Mr. Richard L. Kirby
 Mr. and Mrs. John A. Kish
 Ms. Gina Kittle
 Karen Klix
 Mr. and Mrs. Bruce Klosner
 Mr. and Mrs. Richard J. Knuff
 Kim and Anne Koehler
 Mr. and Mrs. John G. Koelzer
 Ellen Kohler and Matt Cauchy
 Mr. and Mrs. Pete Kohrs
 Mr. and Mrs. John J. Konkall
 Mr. and Mrs. John Korch
 Ms. Holly Kowalske
 Richard and Alina Krahn
 Mrs. J. Patricia Krajewski
 Mr. and Mrs. John G. Krause
 Robert and Mary Anna Kruch
 Hillary and Kurt Kruse
 Maureen and Bob Kruse
 Mr. and Mrs. Raymond Kuhn
 Mr. Tom Kuieck
 Milan Kuklik and Jana Brozova
 Mr. Donald W. Kulish
 Jonathan Kunz and Pam Murphy
 Eric and Grace Lacey
 Mr. and Mrs. James LaFave
 Gertrude Laferte
 Edward C. Lake, Jr.
 Mr. and Mrs. Bruce Lance
 Mr. and Mrs. James P. Landes
 Marsha and Martin Langhorst
 Jerald and Beth Laperriere
 Mr. Joey Latterman
 Beth LaValley
 Mr. Rob Lawson
 Mr. and Mrs. Jeffrey S. Lee
 Ms. Christine Lee
 Steven Lee and Julie Tarr
 David Leece and Kathy Brewer

Mrs. Judie Leece
 Legal Copy Services, Inc.
 Mr. and Mrs. William J. LeGray
 Mr. & Mrs. Terrence Lesniewicz
 David and Kathy Leugers
 Mr. and Mrs. Paul T. Leugers
 Connie Leutloff
 Mr. and Mrs. Alfred J. Levanen
 Mr. and Mrs. Sheldon Levin
 Mr. Eric Lezotte
 Ms. Mildred A. Lindland
 Carol Lingman
 James and Susan Lippert
 Nancy and Victor Lisabeth
 Laurie and Dan Lisuk
 Mrs. Carol M. Liszewski
 Ms. Alice L. Littlefield
 Angela and Benny Liu
 Kelly and Jim Lively
 Michael and Patricia Lora
 Ms. Minnabel Lott
 Mr. Guy Lovelace
 Tamara Lubic and Brian Kincade
 Dr. and Mrs. John E. Lund
 Ms. Elizabeth Lund
 Ms. Kristen Lund
 Judson and Lynn Lynch
 Ms. Abigail Mahoney
 Mrs. Jane W. Markham
 Mr. and Mrs. Robert D. Marth
 Douglas and Gayle Martinelli
 Mr. and Mrs. Douglas G. Mason
 Alex and Jane Maximovich
 John and Nannie Maxwell
 Ms. Ellen J. Maycock
 Julie and John Maynard
 Gary and Rebecca McAdam
 Mr. and Mrs. James McAndrews
 Lee and Ross McAninch
 Mrs. Gloria M. McClay
 Mr. and Mrs. C. Craig
 McConnell, Jr.
 Mr. Maril McCord
 Steven and Susan McCord
 Bruce and Ruth McDonald

Ms. Kristen McElligatt
 Paul and Susan McEwen
 Mrs. M. Egan McGlynn
 Mr. and Mrs. William McIlrath
 Maggie McInnis & Derek Green
 Mr. and Mrs. John McInnis
 Kristi McKenzie & Frank Sellgren
 Michael McManus & Sue
 Brightheart
 Mr. and Mrs. P.J. McNamara
 Mr. and Mrs. Samuel McTier
 Julie and Ted Meek
 Mr. Robert M. Mello
 Mr. Jeffrey Messacar
 Ms. Andria Metrakos
 Rob and Judy Meyer
 Ms. Sara Michael
 Saulius and Lisa Mikalonis
 Mr. & Mrs. Richard C. Mileham
 Marie and Paul Miller
 Mr. and Mrs. Peter Miller
 Mr. and Mrs. William J. Miller
 Stefan and Nancy Miller
 Sally and William Modzel
 Rachel and Isaiah Moger
 Mr. and Mrs. Richard G. Moll
 David Monforton and Anne
 Vanderkloot
 Mr. Thomas R. Moor
 Karen and Bob Moore
 Mr. Dwight B. Moore
 Ms. Mary A. Moore
 Mr. and Mrs. Gerald R. Morawski
 Ken and Faye Morley
 Mr. and Mrs. William K. Morrow
 Mrs. Alison Morton
 Mr. and Mrs. Willard L. Mudgett
 Mr. Glenn Muhr
 James Mumby and Alison Ernst
 Mr. Cliff Murie
 Mrs. Geri Musial
 MVP Collaborative
 Mrs. Elizabeth L. Nathan
 Mr. and Mrs. Terry Naylor
 Mrs. Susan P. Neill

Mr. and Mrs. Larry J. Nelson
 Ms. Christina J. Nelson
 Robert and Chris Newell
 Roy and Joan Newsome
 Kim Ng
 Robert and Cristine Nichols
 Mr. William Noling
 Burton and Carolyn Noll
 Timothy and Holly Norman
 Douglas Northrop and Michelle
 McClellan
 Lawrence and Marilyn Norwood
 Ms. Barbara J. Nowinski
 Gen Obata and Rebecca Stith
 Ms. Majel C. Obata
 Mary O'Donnell and Mike Davis
 Michael Odren
 Ms. Alison Ogilvie
 Robert and Ann Ogur
 Joseph Ohren & Sandra Berman
 Ms. Megan Olds
 Mr. and Mrs. George Olson
 Ms. Cathy O'Mara
 Ron and Sue Osgood
 Mr. Alvin Owsley
 Christine and Donald Pack
 John and Leslie Palmer
 Ms. Kathy Papa
 Mike and Judy Patton
 Mr. Dick Patton
 Leigh & Linda Payment
 Charles and Pamela Payne
 Mr. Thomas Pellerito
 Ms. Mary Pellerito
 Ms. Corinne Pemberton
 Terry and Kathleen Pennell
 Ms. JoAnna Pepe
 Fred and Nancy Perzanowski
 Thomas and Jean Petersen
 Mr. and Mrs. Frank Petrock
 Ms. Sue Pierce
 Mr. Hadley Pihl
 Donald and Jeanne Pisor
 Mary and Lowell Plotkin

James and Gloria Pocock
 Mr. and Mrs. Stan Ponstein
 Edward Porter and Susan Mundt
 Matthew Posner & Marian
 Kromkowski
 Lisa Poszywak and Jaye Thomas
 Mr. Joe Povolito
 George and Judy Prewitt
 Ms. Jean M. Price
 Mr. Bill Pritchard
 Mr. Alfred Prizlow
 Mrs. Angeline R. Pruis
 John and Lyn Dolson Pugh
 Mr. Fred Putnam
 Jeff and Jane Puvogel
 Ms. Barbara L. Quart
 Dave and Mary Query
 Mr. David Raasch
 Robin Rabish
 R. Douglas and Thressa Race
 Ms. Megan Rachford
 Moira Racich and Matt Papi
 Mr. and Mrs. Larry L. Ray
 Ms. Susan Ray
 Mary Raymer
 Paul and Phyllis Rebori
 David and Sally Reeves
 Rehmann
 Thomas and Nancy Reichard
 Mr. James N. Reimer
 Mrs. Judy Blanch Rembacki
 Gregory and Brenda Rener
 Dale and Jane Rhoades
 Mr. James L. Richardson
 Ms. Trish Riley
 Larry Risbridger
 Mrs. Judith A. Ritter
 Mr. and Mrs. James C. Rivers
 Ms. Kathleen R. Roberts
 Mr. Logan G. Robinson
 Robert and Margaret Robinson
 Ms. Joanne Rochow
 Mr. Christopher Rood

Daniel and Janet Rosemergy
 Kay and Pete Rossiter
 Mr. & Mrs. William M. Rouse, Jr.
 Bradley and Kathy Roynon
 Robert and Nancy Russell
 Ms. Elaine Sabady
 Mary Ann Samyn
 Ms. Francine Sandell
 Mr. and Mrs. Robert Sawyer
 Ms. Jane M. Saxton
 Mrs. Johanna E. Schaefer
 Bill and Debra Schmidt
 Terry and Jan Schmidt
 George and Judith Schneider
 John Schuler and Marisue Naber
 Mr. Donald Schwendemann
 Linda Seder and Shane Wyatt
 Mr. and Mrs. Paul L. Sehnert
 Alice Seppanen
 Mr. and Mrs. Kenneth Shafer
 Stephen Shank & Donna Snyder
 Ms. Margaret Shannon
 Ms. Judie Sharar
 Karen Sharkey
 Guy and Andrea Shaw
 John and Wendy Shillito
 Carol and Russ Shipley
 Mr. and Mrs. Greg L. Shoff
 Ms. Jean Vilter Short
 Mr. and Mrs. James R. Shuster
 Mr. and Mrs. Nicholas J. Sica
 Mr. and Mrs. Edward H. Sichler
 Andy and Jane Sikorovsky
 Mr. and Mrs. John D. Sills
 Mr. and Mrs. Richard R. Simonds
 Sleeping Bear Orchards
 Cassandra and Abigail Smith
 Mr. Jon F. Smith
 Ms. Marcia Anne Smith
 Ms. Nancy Smith

2017 Donors Continued

Subscribers (\$59 & under) continued

Mr. and Mrs. Richard M. Snede
 Brian Sniokaitis & Maggie Smith
 Mr. William Somerville
 Ms. Sally A. Somsel
 Mrs. Martha J. Speer
 Brad and Karen Spencer
 Ms. Marion Spencer
 Mr. Jack St. John
 Mr. L. David Stader
 Mr. Stephen H. Staelin
 Mr. Jon O. Stafford
 James and Gretchen Stallings
 Mr. and Mrs. Leo Stallman
 Ms. Julia Stanton
 Carol Stark
 Mr. and Mrs. Michael Steinberg
 Paul and Suzanne Stergar
 Bob and Judee Sternberg
 Ms. Deborah Stevens
 Mr. and Mrs. John Storey
 Ms. Diana Stover
 Mr. Thomas Streasick
 Steven and Cynthia Strong
 Mr. Marvin Studinger
 Mr. & Mrs. Raymond D. Sullivan
 Lynn Sutton
 Sue and Stefan Svensson
 David Sweet and Elaine Kihara
 Al and Mary Beth Swiderski
 Nancy and Alvin Swingle
 Mrs. Catherine A. Taggart
 Laurence and Patricia Tarini
 Ms. Adele S. Tate
 Ms. Joy M. Taylor
 Ms. Winnifred J. Tharp
 Ms. Linden Thoburn
 Don Thomas & Kathy Vezina
 Dr. William G. Thomas
 Ron and Rita Thomason
 Ms. Elizabeth Starks Thompson
 Ms. Joyce Thompson

Ms. Jean Thomson
 David and Beverly Thrower
 Ms. Christine Tiderington
 Edwin S. Tobes & Harriet Bakalar
 J. Richard Tobin & Peggy Wilson
 Ms. Joan Todd
 Mr. and Mrs. Alfred Torres
 Sonya and Steve Tostige
 Daniel Toth and Janice Derian
 Greg and Margaret Travis
 John D. Tremblay
 Doug and Mary Lee Treter
 Trish's Dishes
 Mr. Thomas R. Troost
 Tru North Landscaping LLC
 Kathryn Tulgestke
 Dr. Frances H. Tully
 Ms. Amy H. Tumblin
 Mrs. Marion Unwin
 Ms. Rita Valley
 Ms. Deborah Van Vechten
 Mr. Douglas M. Van Zoeren
 Tom and Alice Van Zoeren
 Rhys VanDemark & Kathi McGookey
 Mrs. Deborah VanIttersum
 Mr. and Mrs. John D. Van Raalte
 Armen Vartian
 Brock and Elizabeth Veldman
 Suzanne R. Verbiest
 Roger and Norma Verhey
 Mrs. Patricia Vingsness
 William and Susan Vogel
 Rolf and Mari Von Walthausen
 William and Pamela Vredevoogd
 John Walker
 Mr. and Mrs. Donald F. Wall
 Ms. Harriet Wall
 Priscilla Walmsley & Doug Kimble
 John Wang and Lucille Fallon
 Max and Louann Ward
 Michael and Jane Ward
 Dick and Karen Warren

Mr. and Mrs. Bradford Warrick
 Ms. Lynne F. Waskin
 Mr. and Mrs. David M. Watt
 Jim and Sharon Wawrzyniak
 Mrs. Joyce M. Wayt
 Mrs. Barbara G. Weber
 Dean and Andrea Weemes
 Mark and Lee Weick
 Mr. Neil Weinberger
 Mr. and Mrs. Tyrus Wessell
 Mr. Larry M. West
 John and Ruth Westol
 Mrs. Carol Ann Wetters
 Mrs. Kit Whalen
 Mrs. Susan L. Wheadon
 Mrs. Marilyn G. Wheeler
 Laurie and Ryan White
 Mr. and Mrs. Allen H. White
 C. Donald and Beverly Whitefoot
 Ms. Bethine Whitney
 Nan and Ron Wick
 Ms. Joan Wiesen
 Rick Wiles and Maggie Daniels
 Gary and JoAnn Williams
 Mrs. Carol A. Williams
 Ms. Jeanie Williams
 Ms. Kathleen R. Williams
 Dr. Donald Willman
 Ms. Mary W. Wilson
 Rick and Barb Wilson
 Mr. and Mrs. John Wing
 John and Connie Wintzinger
 Mr. & Mrs. Edward E. Woessner
 Jim and Judy Wojciechowski
 Denny and Marilyn Wolcott
 Ms. Joan A. Wolf
 Allen and Janice Wolfe
 Mr. and Mrs. Eric V. Wollen
 Mr. Charles Wolterink
 Ms. Kathie Woods
 Thomas and Sarah Woods
 David and Denise Workum
 Matthew and Taya Workum-Byers
 Ms. Barbara Wotila

Laurel Wright & Dan Yannantuono
 Mr. George Wright
 Ms. Carol A. Wright
 Mr. and Mrs. Wayne Wunderlich
 Wendy Wygant & Steven Davis
 Mr. and Mrs. Michael Wysocki*
 Mr. and Mrs. Michael W. Yeiser
 Jerry and Barbara Young
 Mr. and Mrs. Laddie Zalud
 Lauren Zayac and Kienan Sutton
 Merilyn Ueno and Doug Zernow
 Dave and Marcia Zielinski
 Donald and Beth Zieman
 Mr. and Mrs. Gordon Zimmer
 Robert and Gayle Zimmerer
 Mr. and Mrs. Donald L. Zink
 Carolyn Zinn and Brad Parsons
 Dutch Zonderman & Bonny Everett
 Dr. and Mrs. Robert Zondervan
 Zonta Club of Leelanau County
 Ms. Natalie Zoufal
 Doug and Pam Zwart

2017 In-Kind Donors

9 Bean Rows
 Mr. and Mrs. Allen A. Ammons
 Art's Tavern
 Bay Area Recycling for Charities
 Bee Joyful Soap
 Blue Boat Coffee
 Bluebird of Leland
 Brengman Brothers LLC
 Cherry Republic
 Community Consultants
 Creekside Grains
 Bret and Molly Crimmins
 Crystal Harbor Marina Inc.
 Custom Stems
 DesignSmiths Architecture
 Ms. Melissa Drake
 Dune Grass Designs
 David Faught CPA
 Forty-Five North Vineyard & Winery

Four Seasons Nursery
 Dr. Pam Fraker
 G.J.'s Rentals
 Mr. Gary L. Gibson
 Grand Traverse Pie Company
 Great Lakes Tea and Spice
 Grocer's Daughter Chocolate
 Hansen Foods
 Mr. and Mrs. Kent N. Holton
 Hop Lot Brewing Company
 Ken Scott Photography
 L. Mawby Vineyards
 Mr. and Mrs. Jonathon M. Lanphier
 Leelanau Coffee Roasting Co.
 Leelanau Gourmet
 Leland Gal
 Leland Lodge
 Leland Mercantile
 Herbert and Theresa Lindsay
 M22 LLC
 Liana May and Chase Hunt
 Mr. and Mrs. Frederick Miller
 Lyn Motlow
 Ms. Mimi Mullin
 Omena Cut Flowers
 Radius Garden
 Paul and Phyllis Rebori
 Red Path Orchards
 Mr. and Mrs. Ross G. Satterwhite
 Walter and Leslie Schmid
 Sisson's Main Street Specialties
 Peter and Charlotte Smith
 Mr. Leif Sporck
 Still Point Farm
 Tandem Ciders
 Theresa's Beauty Shop
 Weathervane Vineyards, Inc.
 Wild Birds Unlimited
 Traverse City
 Mr. and Mrs. Michael Zanotti

2017 Event Sponsors

New Mission Organics
 Bahle Enterprises, Inc.
 Biggs Construction Service
 Chef's Pride Catering
 Cooper-Gerhart Consulting Forestry LLC
 Dr. and Mrs. Russell A. LeBlanc
 Easling Construction Company
 Gourdie-Fraser, Inc.
 Jack and Susan Seaman
 Sterling Law
 Leelanau Cheese Company
 Leelanau Enterprise
 Mrs. Maria Johnson
 The Homestead
 Williams and Bay Pumping Services

Stay in Touch With a Place You Love!

Our email newsletter features hike and volunteer opportunities, breaking land protection news and beautiful photos. To get on the list, email info@leelanauconservancy.org

Gifts of Land or Development Rights

This list recognizes people who have made a gift of land or development rights through an outright gift or bargain sale to the Leelanau Conservancy since our founding. Thanks in part to the generosity of these donors, the Leelanau Conservancy can ensure significantly more land and water conservation for every dollar raised. The names below reflect all such donors from the time of our founding in 1988. If you notice an error or omission on this list, please notify us.

Anonymous (7)

Horace and Barbara Abbott
Estate of Wayne F. Anderson
Jeffrey Anderson & Sandi McArthur
Andrew V. Kiselius Trust
Debra Antzis and Chad Atkins
Luigi Badalamente
Kristine Ball
Mr. and Mrs. Edmund F. Ball
Mr. George A. Ball
Peter W. Ball
Gary and Christi Bardenhagen
Jim and Jan Bardenhagen
Robert Bartle
Richard Benton
Ms. Karol Berwald
Ben Bowmaster
Mrs. Alexander M. Bracken
David Brigham
Judy Brown
Will Case
Mr. William J. Casier
Mr. Lowell C. Cate
Jim and Kay Charter
Cherry Bay Orchards, Inc.
Michael Chetcuti
Dr. Priscilla Cogan
Gary A. Cook & Sueann Wood
Mr. and Mrs. James J. Cook
Ann Crane
Ellen Crane
Kathleen Crane
Lynne Crane
Ms. Barbara Cruden
David Krumlauf and Joan D'Argo

Mr. and Mrs. Howard M. Dean
Drs. Paul Dechow & Joanne Blum
Jeannie and Bill Dennler
Mr. Joseph E. Dlugopolski
Donna C. Stanton Trust
Ms. Dorothy A. Doten
Ms. Gertrude M. Doyle
Beverly and Jim Duff
Mr. Bruce Viger
Egeler Brothers Farm, LLC
Mrs. Virginia Eitzen
Mr. and Mrs. William L. Elder
Scott and Penny Emeott
Mr. and Mrs. Larry Esch
Katherine Fairman and Bill Queen
Erika and Dennis C. Ferguson
Mr. and Mrs. Eben M. Finger
Dr. Max and Mrs. Mary Finton
Mr. and Mrs. Jeffrey E. Fisher
Mr. and Mrs. John W. Fisher
Mr. and Mrs. Richard W. Force
Ellen Fred and Bob Martel
Mr. and Mrs. Richard M. Gans
Mr. and Mrs. James C. Ganter
Mr. and Mrs. William Y. Gard
Kathy and Gene Garthe
Charlotte Giltner and Avery Burns
Ms. Barbara M. Goodbody
Mr. and Mrs. Edward Goss
Mrs. Claudia D. Goudschaal
Mr. and Mrs. John S. Greeno
Mr. and Mrs. Steven P. Grossnickle
John D. and Ardis Herrold
Ms. Kathy Heye
John T. and Shirley Hoagland
Mr. and Mrs. Alfred Hoffman
Benjamin F. Hohnke
Elmer B. Hohnke
Rose and Stuart Hollander
Edith M. Holway
Mr. and Mrs. Bruce Hood
Mrs. Jeannette Hunt
Mr. and Mrs. Donald D. Hutchinson
Charles and Dorothy Johnson
Leona Kalchik
Mr. F. Randall Karfonta
Jerry and Anna May Kelenske
Mr. James Kimmerly
Mr. John Kimmerly
Mr. Patrick Kimmerly

Ms. Beatrice Kimmerly
Mr. and Mrs. Henry B. Kinzie
Mr. and Mrs. Eugene L. Klein
Mr. and Mrs. Allen Koehler
Mr. and Mrs. A. Scott Koeze
Mrs. Diana Kohler
Mr. and Mrs. Blaise I. Korson
Robert and Geraldine Krumwiede
Mr. and Mrs. Raymond Kuhn
L. Mawby, LLC
Mr. and Mrs. Theodore J. Lanham
Mr. Dan Lawton
Mr. Thomas S. Lawton
Thomas S. Lawton Trust
Ms. Sarah Lawton-Speert
Leland Woods Property Owners Assoc.
Mr. and Mrs. Harrison C. Lingle
Mr. and Mrs. Robert H. MacKenzie
Mr. and Mrs. William F. Marsh
Mr. and Mrs. John E. Martin
Mr. and Mrs. Van W. Martin
Ms. Lilian P. Mattson
Mr. Charles McBride
Mr. John McBride
Lynn McGovern
Mr. and Mrs. Doug McInnis
Mr. and Mrs. Michael A. McManus
Allen and Sandra McSweeney
Franklin B. Mead
William Mead
Mr. Kevin Meisel
Mr. and Mrs. G. Robert Miller
Bernard and Harriet Mitchell
Mr. and Mrs. Stephen Nance
Coco and Roger Newton
Mr. Robert A. Nitschke
Mr. Glen M. Noonan
Mr. and Mrs. William Olsen
Mr. Gerald K. Olsen
Omena Woods Association
Mr. and Mrs. Alvin Owsley
Mr. and Mrs. Woodruff Palmer
Dennis Phillips
Robert and Ellen Pisor
Mrs. Hazel Porter
Thomas Price and Cynthia Carlson
Jean C. Raftshol
Lynda Raftshol
Mr. Curtis Raftshol
Mr. Warren Raftshol
Bill Rastetter and Cary Weed

Mrs. Jean S. Raymond
Roy and Ruth Reynolds
Bill and Coralyn Riley
Ms. Elizabeth McBride Roberts
Mary Ellen Robinson
Jean M. Sanborn
Cecily & Kurt Sanford & Family
Mrs. Frances Petty Sargent
Gary Schultheiss & Barbara Richman
Mr. and Mrs. D. Martin Scott
Ms. Jean Sedlacek
Jeff and Nita Send
Mr. and Mrs. Richard R. Seward
Mr. and Mrs. Richard Shuster
Dayton and Edith Simmons
Mr. and Mrs. William Slawson
Mr. and Mrs. Rossman W. Smith
Mrs. Edna Soper
Alan and Nancy Spinniken
Ms. Juliet Sprouse
Ann and Chris Stack
Jerry and Peggy Stanek
Michael and Theresa Steichen
Mr. B. Eugene Strang
Mr. and Mrs. Norman Strunk
Ms. Martha A. Teichner
Mr. and Mrs. Viktor G. Theiss
Hillary Thornhill Chapman Foundation
Mr. and Mrs. Brian M. Ursu
Mr. Douglas M. Van Zoeren
Tom and Alice Van Zoeren
Joe VanderMeulen & Bronwyn Jones
Victoria Creek Farms LLC
Phil and Barb Von Voigtlander
Jayne Leatherman Walker
Mr. Maitland Walker
Ms. Carol L. Waters
Mr. and Mrs. John B. Watkins
Lorraine Weber and Mac Lister
Ben and Cindy Weese
Mrs. Betty L. West
Dr. Mary C. White
Mrs. Howard R. Whitney
Ms. Constance Whittlesey
Dr. and Mrs. Robert L. Willard
Hamilton and Elizabeth Williams
Lucinda K. Willis
Ms. Julie Windham
Nona and Jay Windham
Mr. Norman Wollenweber

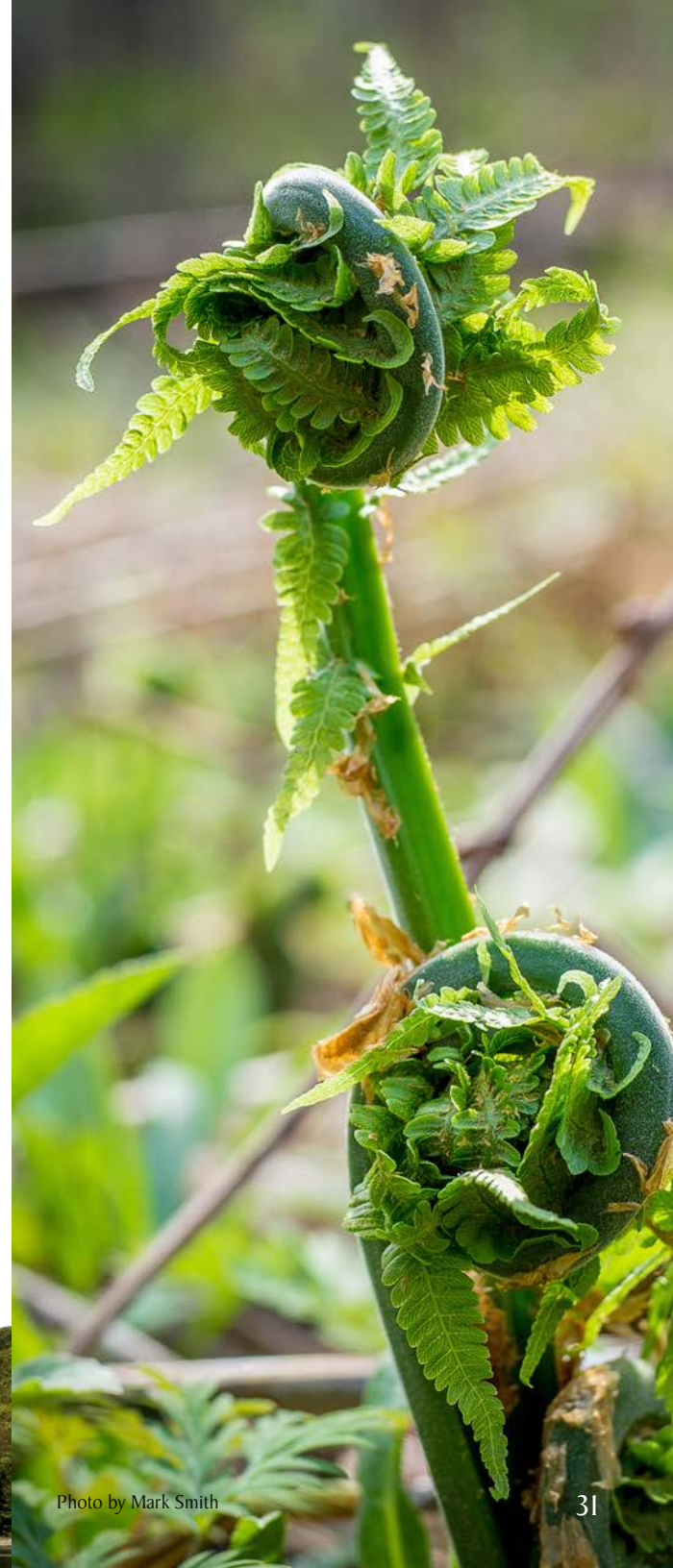


Photo by Mark Smith

Welcome New Sustainers!



Thanks to all who joined the Sustainers Circle in 2017, including Jane Baker (right) with her longtime friend Lianne Somerville (also a sustainer, and a Conservancy Board member). “I increased my commitment to Leelanau Conservancy for several reasons,” says Jane. “Preserving diverse lands and ecologies will help to offset climate change; I too love the rural character of this land; and thirdly I am impressed by the leadership at the board and staff level.”

This photo was taken at a special Sustainers Circle hike at Lighthouse West Natural Area last fall. If you would like to join this special giving circle which is critical to our mission, contact Betsy LePoidevin, Director of Advancement, to learn more: blepoidevin@leelanauconservancy.org or 231-256-9665.

Sustainers Save the Date!

A Summer Gathering will be held on July 3rd. Details TBA. Watch for a May postcard about this event and special hikes.

Joined in 2017

A2M2, LLC
Ms. Jane Baker
Mr. and Mrs. David A. Bohmer
Melissa Warner Bow
Jeff and Debbie Burt
Jim and Gwen Chesterfield
Michael and Barbara Collins
Mr. and Mrs. E. Neal Cory, II
Mr. and Mrs. James B. Croom
Jack and Karen Elder
Mr. and Mrs. Jerrold M. Fisher
Russell and Layne Flick
Donald and Kathryn Frerichs
Bill and Pat Gillula
Ms. Maria Gotsch
John and Christy Hennessey
Mr. and Mrs. Thomas Hiatt
Dr. Jeffrey Johnson
Mrs. Janet H. Kelley
James and Laurie Kletzien
Ms. Karen Ledsky
Mr. Steve Morency
Mr. and Mrs. Clayton A. Prugh
J. Franklin Roesner & Kristin Adams
Todd and Sheila Schorer
Andy and Marietta Smith
Mary Stanley
Franklin and Hollis Starks
Mr. and Mrs. Samuel Stott
Mrs. Anne M. Vaughan
Linda and Doug Verellen
Mr. and Mrs. John Withee
Jack and Carol Wixted
Mr. & Mrs. Michael Zipser,
Attny/CPA

Iconic 190-Acre Omena Farm Preserved



...story continued from page 9

very competitive process and only so much funding is available,” said Tom. “We just missed the cut.”

“Tom really took the bad news to heart,” recalled Fred. “He wanted to make it work. The family talked about bailing and just selling, but I said let’s give it one more go-round.”

This time the funding came through, which covers half the cost of the purchased easement. The land scored well in part because 93% of the project contains “prime and unique soils.”

Fred and his sisters are happy that the land will continue to produce food—and remain undeveloped. “A lot of the very best farmland downstate is gone,” said Fred. Mildred added, “I would hate to see the land turned into a bunch of two-acre home sites.”

How would Rennie feel if he were alive today? “Dad really loved this land,” said Fred. “My sense is that he would be really pleased.”

“There’s a unique feel to the Omena farming district and its history that is really special,” added Nelson. “And there is a really deep sense of satisfaction in helping it to stay that way.” — *Carolyn Faught*

2017 Volunteers

Connie Adamson
Barry Adler
Shirlee Affhalter
Gwen Allgaier
Al Ammons
Dave Amos
Jackie Amos
Alan Anderson
Kathy Angus
Kate Appel
Christine Armbrrecht
Kim Armbruster
Dennis Armbruster
Ed Arnfeild
Kimberly Augenstein
Shalini Augenstein
Alice Baehler
Lois Bahle
Peter Bakker
Merry Ball
Trina Ball
Michele Ballein
Julie Baran
Jim Bardenhagen
Bruce Barnes
Cheryl Bartz
Jan Bauer
Diana Baxter
Vicki Berglund
Dottie Bergman
Jerry Bergman
Jennie Berkson
Blake Bernard
Chuck Bond
Janis Bond
Carol Bowen
Patty Bowers
Dick Bowzer
Barb Bowzer
Will Bracken
Carolyn Brady
Robert Brengman

Emil Brolick
Beth Brooks
Cammie Buehler
Marsha Buehler
Tom Buehler
Lynn Bugenske
Tim Bugenske
Maria Garcia Bulkley
Nora Bumb
Julian Bunker
Joanne Burnham
Keith Burnham
Mary Burton
Ray Canale
Cheri Carleton
Tammy Carpenter
Kyle Carr
Donna Carrico
Frank Carrico
Adam Cassel
Kathy Cavanaugh
Carol Chambers
Kay Charter
Jim Charter
Karen Chase
Beth Chiles
Priscilla Cogan
Michael Collier
Bobbie Collins
Ed Collins
Miki Connell
Dean Conners
James Cooper
Julie Cordano
David Coyne
Paula Crimmins
Jane Damschroder
James Deaton
Dale DeJager
Treva DeJong
Sue Dennis
Jeanne Dennler

William Dennler
Rita Dick
Janet Dickerson
Chuck Dickerson
Joey DiFranco
Martina Dorn
Barbara Dove
Barry Dove
Keith Doyle
Kathy Draper
Nancy Duck
Tom Dunfee
Jack Dunn
Pat Ebright
Meagan Eby
David Edelstein
Judy Egeler
Bob Elliott
Ruth Elliott
Lin Emmert
Gina Erb
John Erb
Betsy Ernst
Melissa Ewing
Susan Farver
Susan Fehrenbach
Dennis Ferguson
Erika Ferguson
Whitney Finch
Harry Finke
Cindy Fischer
John Fitzpatrick
Mike Fleishman
Jill Foerster
Dick Force
Pam Fraker
Joan Franklin
Judy Frederick
Kathryn Frerichs
Jane Gale
Rick Gans
Candy Gardner
Lee Gardner
Rachel Gauthier

Ruth Geil
JoAnne Gerben
Bob Gilbert
Dalia Gilvydis
Marv Graham
Susan Green
Jeff Green
Emma Grodek
Lynn Grodek
Rick Grodek
Brian Grosnickle
Forrest Gunderson
Mike Hall
Lynn Hansen
Gina Harder
Anka Harkness
Heather Harrington
Jay Harrington
James Hart
Nancy Hartings
Keith Hartwell
Chris Hauke
Karl Hausler
Susan Hayes
Deborah Hecht
Sharon Hill
Judy Hoeffler
Grace Hohman
Kent Holton
Steve Hooper
Rich Hoover
Lauren Hucek
Elizabeth Huffaker
Corey Humphrey
Nancy Hunter
John Imboden
Kathy Imboden
Bart Ingraham
Gail Ingraham
Barb Isham
Brian Isham
Michelle Jahraus
Julie Johnson
Nora Johnson

Jennifer Johnstone
Jason Jones
Bill Julian
Edie Juno
Christy Kandel
Yoka Kaye
Tim Keilty
Ed Ketterer
Jane Kiernan
David Kleiner
Margy Klesney
Barbara Knapp
Thomas Knieck
Tracie Kochanny
Dr. Steve Kohler
Amy Kowalak
Barbara Krause
Julie Krist
Marion Kromkowski
Benjamin Kusner
Laura Labriola
Ben Laird
Ione Lake
Bridget Lamont
Erik Larsen
Monica Larsen
Hannah LePoidevin
Lynda Leugers
Kate Lewis
Steve Lindo
Matthew Ling
Mina Weymouth-
Little
Lynn Livingston
Judy Livingston
Bill Lustig
Jeri Lustig
Pam Lysaght
Joanne Mahnke
Ryan Mahnke
Tom Maiolani
Kathy Marciniak
Mary Ellen Marik

Debbie Marsh
Wyatt Martin
Steve Martineau
Ann Mason
Linda Mason
Larry Mawby
Kate McDonald
Mary McDonald
Pat McDonald
Ann McInnis
Kanda McKee
Steve McQuown
Peg Meeker
Monna Meyer
Craig Miller
Nancy Miller
Sue Miller
Nancy Mogle
Andrew Moore
Colleen Moose
Deb Morgan
Lyn Motlow
Brad Muir
Karen Mullvahill
Annette Munson
Eric Munson
Sadie Murphy
Bob Newell
Chris Newell
Roger Newton
Ann S. Nichols
Marlene O'Connor
Pat O'Connor
Mike O'Donnell
Susie Olsen
Kathryn Omoto
Sharon Oriel
Jane O'Rourke
Cara Lee Paige
Laura Gits Paine
Mary Petterson
Holly Pharmer

Ellen Pisor
Bobbie Poor
Tom Porter
Matt Posner
Brian Price
Susan Price
Linda Proffitt
Brad Purcell
Katherine Purcell
Janice Purse
Helene Rabinowitz
Paul Rebori
Phyllis Rebori
Jennifer Reid
Kaula Rice
Kathy Ricord
Lou Ricord
Shawn Ricker
Anita Risbridger
Richard Ristine Jr.
Leah Robison
Melanie Rogers
Bill Rosemurgy
Cindy Rosiek
Ken Rosiek
Linda Samuilow
Julie Sanco
Kerry Satterwhite
Ross Satterwhite
Bill Scharf
Leslie Schmid
Walter Schmid
Susan Abbott
Schmidt
Michael Schmitt
Cathy Schocker
Ed Schocker
Peggy Schudlich
Michael Schwartz
Ken Scott
Diana Sebal

Claudia Shannahan
Jim Shannahan
Guy Shaw
Patty Shea
Karen Sinclair
Michael Skare
Paul Skiem
Mary Smart
Steve Smiley
Mark Smith
Sherry Smith
Jan Snede
Kathie Snedeker
Lianne Somerville
Suzanne Sorkin
Kathy Spinniken
Lance Spitzner
Adam Spitzner
Ania Spitzner
Leif Spork
Gretchen Sprout
Laura Sprout
Tim Stein
Jeanette Stepanek
Kristin Stepanek
Steve Stepanek
Phillip Stinson
Cathy Stocker
Marnie Sutter
Tom Sutter
Linnea Swanson
Al Swiderski
David Tabion
David Tabolt
Lisa Taylor
Amy Tennis
Bert Thomas
Elizabeth Tiffany
Frank Tobin
Mary Tonneberger

Mary Tris
Marla Tyler
Trudy Underhill
Mary Valpey
Alice VanZoeren
Barb Varley
Cate Varley
Joe Varley
Mandy Venturino
Linda Verellen
Barbara Vilter
Carrie Wadas
John Wadas
Bruce Wagner
Christian Walters
Phyllis Foley Wanroy
Janet Ward
Ann Watkins
Warren Watkins
Anneke Wegman
Chuck Whetsel
Janet Whetsel
Kathy Williams
Barbara Winkelman
Peter Wolcott
Megan Woller-Skar
Barbara Wood
Joanie Woods
Randy Woods
Shelley Yeager
Carolyn Zalud
Brian Zimmerman
Michael Zoyhowski

If you are interested
in becoming a
volunteer, contact
Claire Wood at
cwood@leelanau
conservancy.org

Leelanau Conservancy
105 North First Street
P. O. Box 1007
Leland, MI 49654
231-256-9665
info@leelanauconservancy.org
www.leelanauconservancy.org

Non-Profit
Organization
U.S. Postage
PAID
Leland, MI
Permit No. 5

BOARD OF DIRECTORS

Edward & Barbara Collins
Founders

Ed Ketterer Chairman
Karen Mulvahill President
David Edelstein Vice-President
Rich Hoover Vice-President
Ross Satterwhite Treasurer
Leslie Schmid Secretary

Christine Armbrecht
Emil Brolick
Cammie Buehler
Gina Erb
Bob Gilbert
Sharon Oriel
Steve Martineau
Larry Mawby
Roger Newton
Lianne Somerville
Amy Tennis
Bruce Wagner
Warren Watkins

STAFF

Executive Director
Thomas Nelson

Finance &
Administration
Kathy Birney
Molly Crimmins

Charitable Giving &
Communications
Betsy LePoidevin
Carolyn Faught
Gayle Egeler
Sara Michael
Leslee Spraggins
Claire Wood

Land Protection
Matt Heiman
Kim Hayes

Stewardship
Becky Hill
Yarrow Brown
Emily Douglas
Chase Heise
Andrea Hunt

Earth Week Schedule of Events

Mon. 4/16, 10am Hike it Baby Hike, DeYoung Natural Area
Tues. 4/17, 10am Director's Hike, Teichner Preserve
Weds. 4/18, 10am Trail Restoration Workbee, Whaleback Natural Area
Thurs. 4/19, 9:45am Wildflower Rescue Kickoff Meeting, Leland Library
Fri. 4/20, 10am Tree Planting Workbee, Palmer Woods Forest Reserve
Sat. 4/21, 10am Early Spring Blooms Docent Hike, Clay Cliffs Natural Area
Sat. 4/21, 1-4pm Guided Ride - Mountain Bike w/ Bike Leelanau, 45 North Trail
Sun. 4/22, 1-4pm Kids Earth Day, Leo Creek Preserve
Sun. 4/22, 3-6pm Earth Day Celebration, Tandem Ciders

Spring Workbee Schedule

Tues. 5/8, 1-3pm Garlic Mustard Workbee at Clay Cliffs Natural Area
Tues. 5/15, 10-noon Garlic Mustard Workbee at Lighthouse West Natural Area
Sat. 5/19, 9-noon NW MI Invasive Species Network Garlic Mustard Workbee at Clay Cliffs
Sat. 5/26, 1-3pm Garlic Mustard Workbee at Clay Cliffs Natural Area
Fri. 6/1, 1-3pm Garlic Mustard Workbee at Clay Cliffs Natural Area
Thurs. 6/7, 2-4pm Becky's Birthday Garlic Mustard Workbee at Clay Cliffs Natural Area

Wildflower Rescue

Mon. Wed. Fri.
starting 4/20 9:30am First dig 4/20 Meet at 9:30am & carpool from Village Green to dig site
Fri. & Sat. 5/25-5/26 Wildflower Rescue Plant Sale at the Leland Village Green



Sign up for events at
leelanauconservancy.org



Photo by
Michael Collier