



There's No Place Like Leelanau

Conserving the Land, Water, and Scenic
Character of Leelanau County

2016 Annual Report
Spring 2017 Newsletter:
Vol. 28, No. 1

Executive Director's Message

It is good people who make good places.
— Anna Sewell

It was a poignant moment the other night. A familiar Leelanau winter evening was setting in. At dusk, a snowstorm was furiously howling around our house. Out the window, tree limbs seemed to wave an ominous warning, the bluish snow collecting in surging drifts. But inside, my two-and-half-year-old daughter, India, and I were curled up in the cocoon of a warm easy chair next to a glowing fire in the woodstove, reading the 140-year-old classic, *Black Beauty*—a story of a horse and his many relationships with the humans in his world. When I read the line "...good places make good horses...", I immediately recalled another favorite Sewell quote: "It is good people who make good places." And of course, my thoughts quickly turned to all of you, who love this amazing place.

It's a truism that with each passing year, there are fewer and fewer "good places" left in the world. By now, many of you know that my work with the Conservancy has been profoundly motivated by the obliteration of my childhood community's farms and woodlands by poorly planned development, which occurred in a breathtakingly short timeframe.

As a child, I grew up climbing trees and building forts with

my friends in the woods next to farm fields where a mosaic of apples, grapes, corn, pumpkins and summer vegetables were raised. In an era when, just 30 miles away, a river caught fire and the industrial pollution of our lands and waters was tragically the norm, my pastoral community was an oasis of peace and calm. But by my mid-teens, I had learned a terribly painful lesson that good places can be lost forever when no one speaks up for them. And, even when they are spoken for, one must make a commitment to continue to care for and nurture them.

It begs the question: Can't we just leave nature alone to take care of herself? The answer is that, given all the pressures on our lands and waters from human impact, including the spread of invasive species, diseases and climate volatility, nature needs our help more than ever. And so do our working lands—the farms and forests that nourish our bodies and souls.

It is this collective sense of personal responsibility to protect and nurture our lands and waters that sets Leelanau apart. What is even more inspirational is just how this sense of personal responsibility and connection to the land manifests itself in so many different ways. From the generations of farm families who helped heal Leelanau in the wake of the timber era, to today's growers and forestland owners who understand and practice sustainability, to her citizens who speak out when needed and support the Conservancy so beautifully.

When I count my blessings, I'm especially thankful for all *you* have done to preserve so many of the special places in Leelanau. If a living Anna Sewell could be transported to Leelanau today, I'm sure she'd observe that it is great people who preserve and sustain great places. I'm just as certain that, decades from now, on a winter night when India is curled up with her own child, reading *Black Beauty*, she too will feel that same upwelling of gratitude to *you*—the good people who kept this place so great.

Upcoming Events

Earth Week Activities:

April 17-22, events and times TBA. Watch our website, social media and emails for details to come.

Memorial Weekend Wildflower Rescue Plant Sale:
Friday/Saturday May 26-27, 9am-4pm, Leland Village Green.

Annual Friends Picnic:

Thursday, August 3, Rex Dobson Ruby Ellen Farm

Palmer Woods Dedication:

Summer 2017, date/details TBA

Sustainers Hikes and Coffees:

If you are a Sustainer and did not receive info on planned spring and summer gatherings please let us know!
Email blepoidevin@leelanauconservancy.org

Take a Hike:

Check out a fantastic spring schedule of docent-led adventures on our website. Group hikes are a great way to learn about our natural areas and to make new friends. For the docent schedule, visit leelanauconservancy.org/events/hikes/.



Tom Nelson
Executive Director



A Word About Our Newsletter

We hope you like our new look with crisper photos of the places you love. This newsletter is printed on stock that has been endorsed by the Forest Stewardship Council. FSC is a global non-profit dedicated to the promotion of responsible forest management worldwide. The Council helps consumers make informed choices about the forest products they buy and create positive change by engaging the power of market dynamics.

How do you like to hear from us? We are happy to accommodate your preferences—just let us know by emailing cfaught@leelanauconservancy.org.

Chairman's Message

There's no place like Leelanau. We started using that phrase as part of our Earth Day celebration in 2016 and are hard pressed to coin a better message that seems to speak to all of us. What does it mean? Is Leelanau really that unique? Aren't there lots of places where you could say the same thing? Probably, but this place is special, not only the geography, the lakes, the beaches, the views, the climate, but also the people.

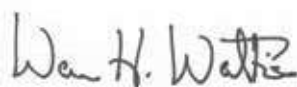
For nearly 30 years, you have been the driving force behind our mission to conserve the land, water and scenic character of Leelanau forever. With your help, we have preserved Natural Areas that contain rare, unique or fragile environments. The seeps and streams at Swanson Preserve, Hatlem Creek and other properties provide the pure groundwater that flows into the lakes that are so important to our way of life.

Access to nature and the outdoors is clearly important to you; we're delighted to see cars at places like Clay Cliffs and Palmer Woods year round as people hit the trails to hike, ski and snowshoe. Our Natural Areas also function as important cornerstones in protecting larger landscapes as neighboring property owners have worked with us to permanently protect their land through the establishment of conservation easements. In fact, most of the lands preserved by the Conservancy remain in private ownership, protected by these legal agreements that allow the owner to pass the land to heirs or sell it with the knowledge that it will remain largely the same forever.

Our blossom tours have been among our most popular events and you have told us that the rural country roads and views of orchards and vineyards are an important part of your Leelanau experience. Leelanau's farm families have a true bond with their land and we are grateful that many of them are more interested in keeping their property in agriculture than to get top dollar from a developer. With their help and yours, we have permanently protected over 5,000 acres of farmland.

Thanks to an army of dedicated volunteers, we have worked to control and remove invasive species that threaten our beautiful native plants and wildflowers. You may have seen the two deer exclosures along the Price Valley Trail at Palmer Woods. We are confident these fenced-in areas will protect young sugar maples from deer browse, allowing these saplings to grow into majestic trees. As important, we hope that spring ephemerals and other native plants that have been decimated by deer browse over many years will make a comeback.

You, the people of this peninsula, view yourselves as stewards of Leelanau, both of the land and the rural, small-town lifestyle. Together we have protected treasured places and I am sure there will be more projects in the future. While Leelanau will undoubtedly change through the years, our promise to care for and defend these lands into perpetuity will endure. We are thrilled to be part of a community committed to keeping Leelanau the special place that it is for future generations.



Warren Watkins, Board Chairman

One of my closest friends was struggling with a debilitating depression last year. Her doctor admitted her to Munson Hospital's outpatient program, and so for three weeks she spent all day in counseling and group therapy. On her way home, she often found herself stopping at the DeYoung Natural Area on Cedar Lake.

With a camera and journal in hand, she would plunge into the magical old cedar forest. Making her way on the soft, spongy trail, she listened to the birds and marveled at the size of the trees. When she emerged into the clearing, arriving at the observation deck, she turned her face to the sun and soaked in the view. "Being there really got me through some of the darkest days," she says. "Nature is the greatest of healers."

I know another woman whose sister died—way too young—of cancer a few years ago. The sisters often walked our Whaleback trail together before cancer struck. "She really loved that trail," the woman told me. "After she died, I went there as often as I could. It made me feel close to my sister, and helped me to process what had happened."

In thinking about putting this report together, I found myself looking through a precious folder I keep, stuffed with notes that you have sent in over the years. As Communications Director, I am grateful to be the keeper of your sentiments about Leelanau.

Here's a favorite: Claudia Lockhart, whose photos often appear on our Why Leelanau blog, wrote after a November visit. "We relished every funky change of weather—sun, rain, sleet, high winds to downright cold," she said. "My husband loves to just sit on our deck and "breathe in that northwoods air"—it is heaven to him to arrive in Leelanau, no matter the season. It's replenishing to those of us who aren't lucky enough to live up there."

Healing, connecting, replenishing. These are the things that Leelanau does for us and so much more. Thanks to you, 2016, our 28th year, was a great one. Together, we have preserved more places for you to connect, recharge, and heal.

—Carolyn Faught

2016

The Impact of Your Giving

Highlights from a Great Year

Palmer Woods Forest Reserve Became Yours!

- The first trails at this majestic 707-acre forest were created with more to come—it's a work in progress!
- Kiosks and temporary signs were installed.
- Plant surveys began that will help guide trail development and a forest inventory is underway to guide sustainable timber management and enhance biodiversity.



- Trail architect Jeff Parker conducted a trail feasibility study, then created an all-encompassing plan that will allow us to work in stages.
- Two deer exclosures spanning 35 acres were constructed. Fences will keep deer out but allow for passage of other animals and enable the Conservancy to study their impact on the forest.
- This winter, volunteers with Friends of Sleeping Bear Dunes groomed trails here for fantastic cross-country skiing. Thank you!

Caring for the Lands You Helped to Protect

- In addition to all the work at Palmer Woods, Stewardship staff and volunteers were busy building boardwalks, mulching trails, eradicating invasive species and monitoring water quality. Please see pages 8-9 for more details!

Beloved Leo Creek Land Protected

- A private foundation donated a conservation easement on 8.7 acres of ecologically rich land along beautiful Leo Creek. Located along the Leelanau Trail, the Preserve is near Suttons Bay.
- The Preserve's 2,200 feet of stream frontage helps to ensure the creek's stellar fish spawning habitat remains.
- The land is open to the public, and a garden area is in the works. Volunteers welcome!

Chippewa Run Natural Area Gains a Buffer

- Thanks to the Ketchum Family, 2 acres that could have been a big box store are now part of this unique Natural Area in Empire. See story on page 6.

Two Families Preserve Fruit Growing Land

- Mike and Janet McManus' 141 acres protects wetlands important to Lake Leelanau and frontage along fragile Houdek Creek. It also links up to other preserved farms, creating a working agricultural corridor.
- The Lawton family protected 210 acres near Suttons Bay to honor beloved parents who once farmed there. Preserving a piece of history, along with this productive landscape remains.

Cedar River Preserve Grows

- A new 40-acre wetland provides supreme habitat for wildlife—bear tracks were spotted along the creek!
- The Preserve protects 760 feet of frontage on Cedar Run Creek, which feeds cool, clean water into South Lake Leelanau.
- The Preserve is surrounded by State Forest, increasing the impact of this protected corridor.

(In-depth stories about these highlights can be found on our website.)



Thank You
For a Your
Support!

Family Values: Preserving Empire's Small Town Character

Kirk Ketchum recalls spending childhood summers in Empire. "The beach at sunset, walking through the fields—it's just so idyllic," he says. "I loved those quiet days on the lake, star-filled nights, and going to the Cherry Hut every so often." Kirk's mother, Louise, had grown up in Traverse City, and so Kirk's family vacationed with cousins or in a rental on Glen Lake. Louise and her husband, Chandler—both now passed—were longtime Conservancy members.

The five Ketchum siblings inherited two acres adjacent to Chippewa Run Natural Area. They live all over the country. Last year Kirk says they were approached by developers who eyed their land along M-22 as a possible convenience store location. In the end, says Kirk, "We just didn't really care to see a Dollar General there. We like Empire the way it is and that's what my dad would have liked too." The family has since donated the land to the Conservancy.

"The value wasn't enough for us to sell it and it just wasn't worth changing the face of the community," adds Kirk. "I for one would like my children to experience Empire in the same way that I did."

Executive Director Tom Nelson says, "It's hard to be anything less than inspired by, and grateful for, the Ketchum Family's fantastic conservation ethic—an ethic that seems to be widely shared in the greater Empire community. That speaks volumes about their commitment to the ecological integrity and character of the area."

The Ketchum land buffers Chippewa Run as well as the Village. With its 500 feet along M-22, it also protects Leelanau's Scenic Heritage Route. "There has been migratory bird research going on for six years at Chippewa Run," says Matt Heiman, Director of Land Programs. "We were concerned that lights and so much activity nearby would have impacted the study and the birds that come and go from Chippewa Run."

"If we can help keep it this way we are happy to do it," says Kirk. "It's the way we were raised."



Kirk Ketchum and his family on a Leelanau summer vacation, cherishing the beauty and small-town charm of Empire.

New Program Provides Matchmaking for Farmers

Do you know a young farmer who is looking for land to buy or lease? Are you a landowner who would like to sell or lease? Might you know someone who wants to work on a farm or is in need of farm workers?



Photo: Eric Munson

A new partnership spearheaded by the Leelanau Conservancy is aiming to bring people together—to help farmers, buyers, sellers and workers make connections online. "It's called Farmer to Farmer, and is a great tool that has taken off in other parts of the country," says Sam Plotkin, Farms Program Manager for the Leelanau Conservancy. "We are excited to be launching it here in Leelanau and the surrounding five-county region."

Sam has worked closely with folks at M.S.U.'s Horticultural Station and Taste the Local Difference, a local foods marketing agency. The partners are creating a new website where participants can register. The website will live on Taste the Local Difference's site; and the Conservancy will help to promote it and raise awareness via our media channels.

"One of the biggest impediments for young farmers is access to land, and we have a lot of aging farmers who will soon be retiring," adds Sam. "We hope this new site will help bring them together." As of press time, the site was soon to go live. Stay tuned for an update via our weekly emails. Your support makes great innovation like this happen!

“The Pleasure of Knowing We Have Done Our Part”

Dr. Rosemary Berardi and Dr. Carolyn Zaleon, have done an amazing and selfless thing. They have donated a beloved piece of land on Omena Point to the Leelanau Conservancy. Their intention is for the 1.52-acre shoreline parcel to be sold and the funds raised dedicated to furthering the work of the Conservancy.

Rosemary had originally made plans to donate the land in her will, but decided to act now. “I woke up one day and it dawned on me, why am I waiting until I die to donate this parcel?” she says. “I can have the pleasure of knowing that we have done our part to preserve the Leelanau Peninsula, and the Conservancy can put the funds to work now.”

Rosemary’s Leelanau story began when she and her sister and brother-in-law began camping at the Leelanau State Park in the early 1970s. At the time Rosemary was teaching at the University of Michigan’s College of Pharmacy. For a decade, they pitched their tents side by side. One day, as they sat at the beach, “we looked at each other and decided it was time to buy our own campground so to speak,” says Rosemary. Her sister and brother-in-law ended up on Cathead Bay and Rosemary discovered Omena. “I fell in love with the ruggedness of that beach.” She bought the land and added a gravel drive and a septic system with the idea of building there one day.

In 1990, Rosemary met Carolyn, who had joined U of M’s faculty, and brought her north that spring. “I remember taking one look at the beach, and fell in love,” says Carolyn, a North Carolina native. “Where I’m from, all the lakes are muddy, and all I knew was ocean. I couldn’t fathom that you

could have a lake where you couldn’t see the other side and have wave action like that.”

For years, they camped on the land, upgrading to a pop-up trailer, and then a small camper. They loved rock hunting, watching storms roll in and walking around Omena Point, especially when the trillium bloomed. “It was so quiet, so absolutely peaceful there that you could hear your heart beating,” recalls Rosemary.

In 2000 Rosemary was diagnosed with cancer. For the next few years, she was too weak to come to Omena. After she recovered, and retired in 2011, Rosemary and Carolyn started coming north again. But their camping days were over. Instead, about four times a year, they stay in Traverse City and spend their days exploring and hiking. Rosemary, 76, says they concluded that it wasn’t feasible to build. “We’ve entered a new phase. The Ann Arbor area is home and the University’s Comprehensive Cancer Center saved my life,” she adds. “I need to be there.”

Rosemary hopes that their gift will inspire others. “It’s a scary time we live in from the standpoint of nature,” she says. “There is a lack of respect for those things that you can never get back once they are destroyed. I have such faith in the Leelanau Conservancy. I know it’s a strong organization.” For their gift, they want nothing in return, other than to take a guided hike or two at one of our natural areas with our staff.

That is a wish we very much look forward to fulfilling.

If you are interested in purchasing this property please contact Matt Heiman at the Leelanau Conservancy:
mheiman@leelanauconservancy.org or 231-256-9665.



Drs. Carolyn Zaleon and Rosemary Berardi (left) on the shore of Omena Bay. They have donated this land they love to help raise funds for future Conservancy projects.

What's in a Number?



311 volunteers logged 5,255 hours, helping with everything from stuffing envelopes to building boardwalks. 100 volunteers helped to pull invasive garlic mustard!



Photo: Cara Lee Paige

6 is the number of years that Dr. Bill Scharf and Alice VanZaeren have been studying the migration habits of songbirds at Chippewa Run.

60 wheelbarrow loads full of mulch was laid on pathways by wonderful volunteers.



900 people went on hikes with our Docents and Staff.

10 dedicated stream sampling volunteers collected 1,030 samples from 17 streams and seven lakes to monitor water quality.



Photo: Rick Gans



Photo: Karen Mulvihill



150 5th graders learned about watersheds and water quality with our staff and the Leelanau Conservation District at Veronica Valley.

6 boot brush stations were installed to help keep invasive species seeds from entering or leaving our natural areas.





165 private property conservation easements were monitored this year.



12 new members joined the Richard O. Ristine Heritage Society, taking steps to include the Conservancy in their estate plans.



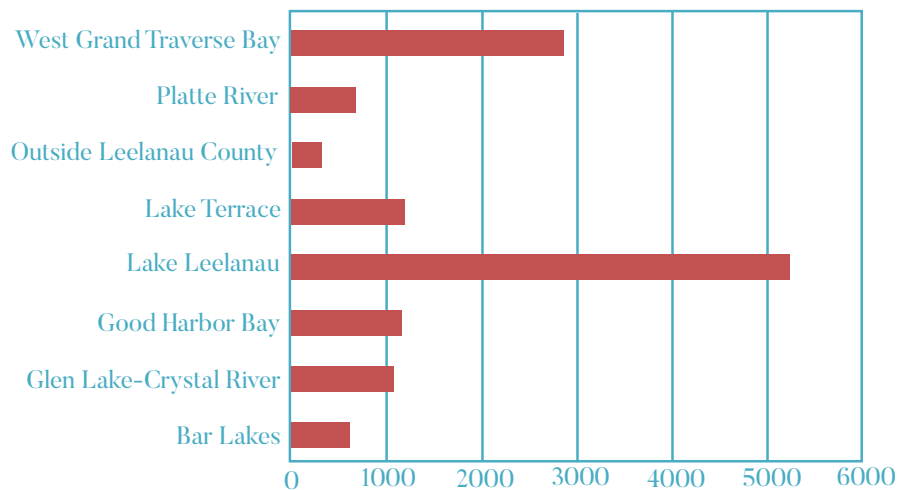
Photo: Meia Hauser



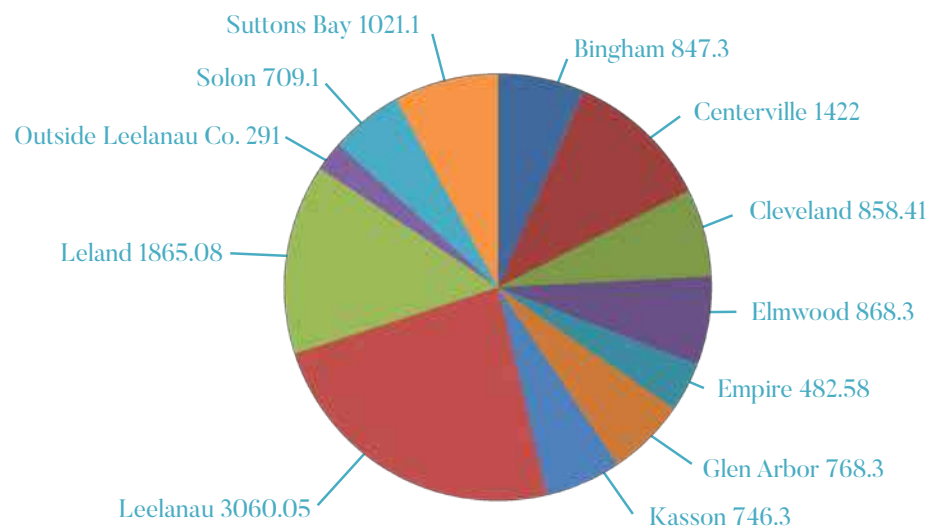
2,460 pots full of wildflowers were rescued and presented at the Annual Wildflower Rescue Sale.

2016 Protected Lands by the Numbers

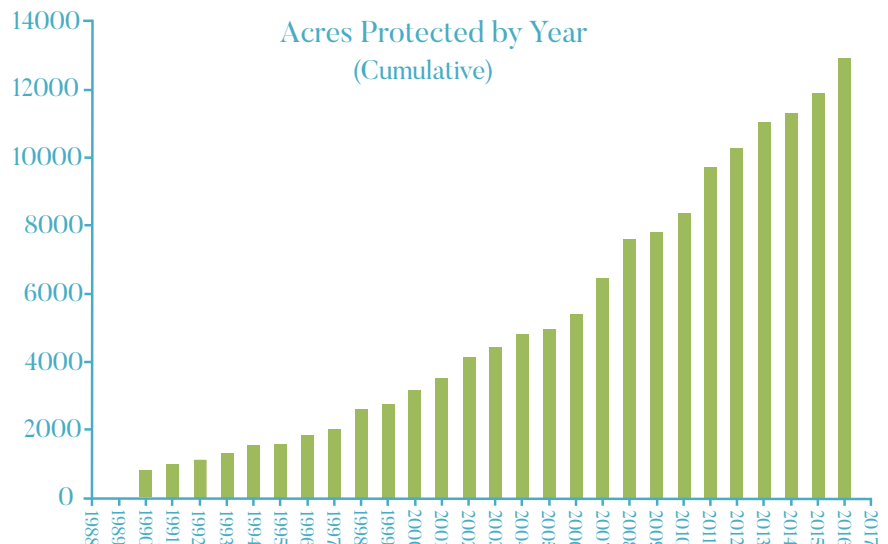
Acres Protected by Watershed



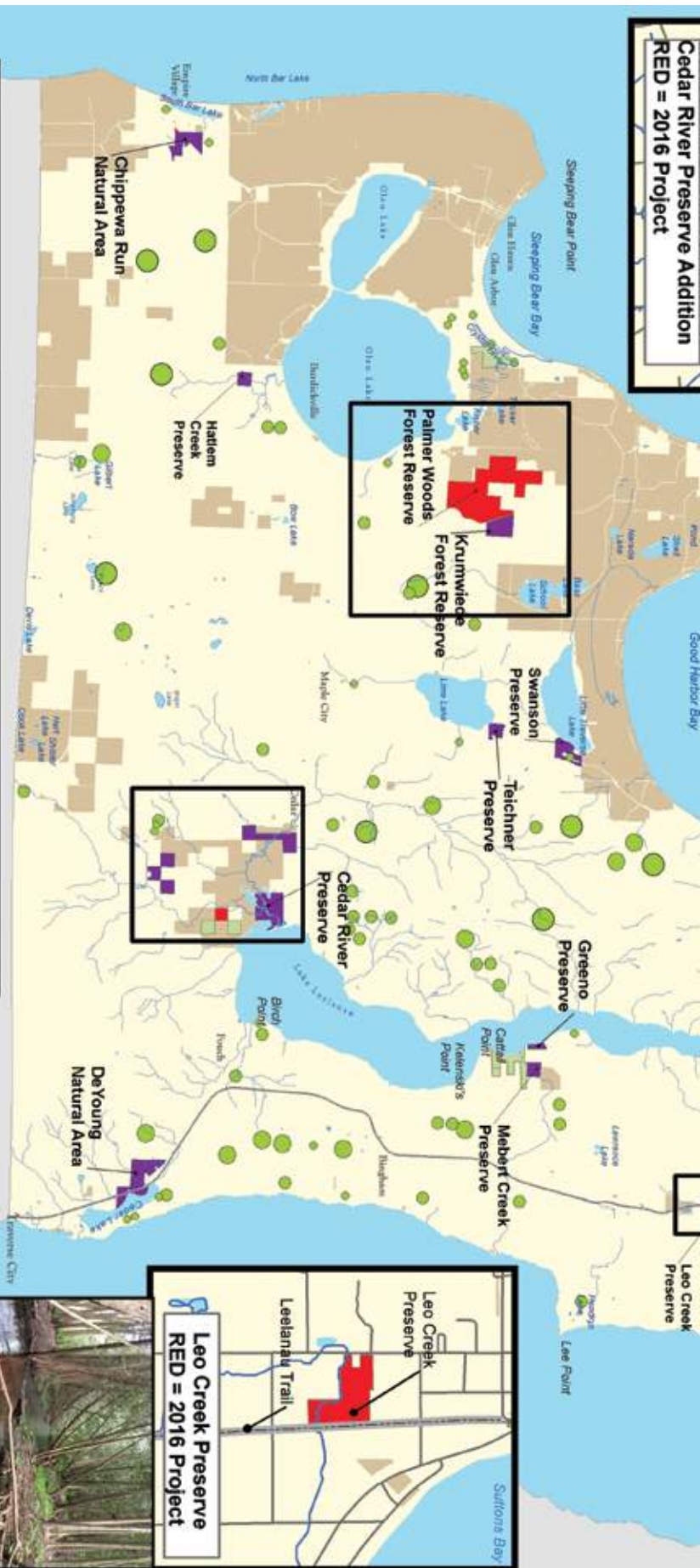
Acres Protected by Township



Acres Protected by Year
(Cumulative)



Cedar River Preserve Addition RED = 2016 Project



MAP LEGEND

Circles = Private Conservation Easements
Red = 2016 Projects Green = Projects 1988-2015

140 + Acres
200 + Acres

2016 Projects
Conservancy Natural Areas, Forest Reserves & Preserves

Public Land (state, federal, local)

Leelanau Trail

Streams

Lakes

0 0.5 1 2 3 4 Miles

Source:
Michigan Center for Geographic Information,
Department of Information Technology
Leelanau County Planning & Community
Development Office

Map prepared, February 2017 by:
Leelanau Conservancy Staff

Total Protected Land in 2016:
1,108.9 acres

2016 Conservation Easements:
359.4 acres

2016 Natural Areas and Preserves:
749.5 acres

Total Stream/Lake Frontage
Protected in 2016:
4,550 feet (or 0.86 miles)

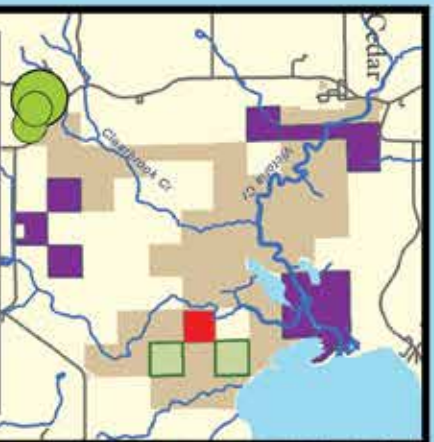
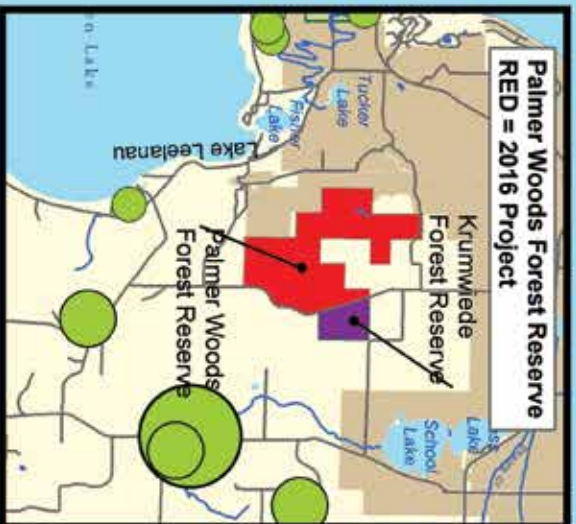
Total Land Protected to date (1988-2016):
12,925.6 acres



Leo Creek Preserve
RED = 2016 Project

You Made It Happen!

Lands Protected Through 2016



Gifts of Land or Development Rights

This list recognizes people who have made a gift of land or development rights through an outright gift or bargain sale. Thanks in part to the generosity of these donors, the Leelanau Conservancy can ensure significantly more land and water conservation for every dollar raised. The names below reflect all such donors from the time of our founding in 1988. If you notice an error or omission on this list, please notify us.

Anonymous (7)
Horace and Barbara Abbott
Estate of Wayne F. Anderson
Jeffrey Anderson & Sandi McArthur
Andrew V. Kiselius Trust
Debra Antziz and Chad Atkins
Luigi Badalante
Kristine Ball
Mr. and Mrs. Edmund F. Ball
Mr. George A. Ball
Peter W. Ball
Gary and Christl Bardenhagen
Jim and Jan Bardenhagen
Robert Bartle
Richard Benton
Ms. Karol Benwald
Ben Bowmaster
Mrs. Alexander M. Bracken
David Brigham
Judy Brown
Will Case
Mr. William J. Casier
Mr. Lowell C. Cate
Jim and Kay Charter
Cherry Bay Orchards, Inc.
Dr. Priscilla Cogan
Gary A. Cook & Sueann Wood
Mr. and Mrs. James J. Cook
Ms. Barbara Cruden
David Krumlauf and Joan D'Argo
Mr. and Mrs. Howard M. Dean
Jeannie and Bill Dennler
Mr. Joseph E. Dlugopolski
Donna C. Stanton Trust
Ms. Dorothy A. Doten
Ms. Gertrude M. Doyle
Beverly and Jim Duff
Mr. Bruce Viger
Egeler Brothers Farm, LLC
Mr. and Mrs. William L. Elder
Scott and Penny Emeott
Mr. and Mrs. Larry Esch
Katherine Fairman and Bill Queen

Erika and Dennis C. Ferguson
Mr. and Mrs. Eben M. Finger
Dr. Max and Mrs. Mary Finton
Mr. and Mrs. Jeffrey E. Fisher
Mr. and Mrs. John W. Fisher
Mr. and Mrs. Richard W. Force
Ellen Fred and Bob Martel
Mr. and Mrs. Richard M. Gans
Mr. and Mrs. James C. Ganter
Mr. and Mrs. William Y. Gard
Kathy and Gene Garthe
Charlotte Giltner and Avery Burns
Ms. Barbara M. Goodbody
Mr. and Mrs. Edward Goss
Mrs. Claudia D. Goudschaal
Mr. and Mrs. John S. Greeno
Mr. and Mrs. Steven P. Grossnickle
John D. and Ardis Herrold
Ms. Kathy Heye
John T. and Shirley Hoagland
Mr. and Mrs. Alfred Hoffman
Benjamin F. Hohnke
Elmer B. Hohnke
Rose and Stuart Hollander
Edith M. Holway
Mr. and Mrs. Bruce Hood
Mrs. Jeannette Hunt
Mr. and Mrs. Donald D. Hutchinson
Charles and Dorothy Johnson
Leona Kalchik
Mr. F. Randall Karfonta
Jerry and Anna May Kelenske
Mr. James Kimmerly
Mr. John Kimmerly
Mr. Patrick Kimmerly
Ms. Beatrice Kimmerly
Mr. and Mrs. Henry B. Kinzie
Mrs. and Mrs. Eugene L. Klein
Mr. and Mrs. Allen Koehler
Mr. and Mrs. A. Scott Koeze
Mrs. Diana Kohler
Mr. and Mrs. Blaise I. Korson
Robert and Geraldine Krumwiede
Mr. and Mrs. Raymond Kuhn

L. Mawby, LLC
Mr. and Mrs. Theodore J. Lanham
Mr. Dan Lawton
Mr. Thomas S. Lawton
Thomas S. Lawton Trust
Ms. Sarah Lawton-Speert
Leland Woods Property Owners Assoc.
Mr. and Mrs. Harrison C. Lingle
Mr. and Mrs. Robert H. MacKenzie
Mr. and Mrs. William F. Marsh
Mr. and Mrs. John E. Martin
Mr. and Mrs. Van W. Martin
Ms. Lilian P. Mattson
Mr. Charles McBride
Mr. John McBride
Lynn McGovern
Mr. and Mrs. Doug McInnis
Mr. and Mrs. Michael A. McManus
Allen and Sandra McSweeney
Franklin B. Mead
William Mead
Mr. Kevin Meisel
Mr. and Mrs. G. Robert Miller
Bernard and Harriet Mitchell
Mr. and Mrs. Stephen Nance
Coco and Roger Newton
Mr. Robert A. Nitschke
Mr. Glen M. Noonan
Mr. and Mrs. William Olsen
Mr. Gerald K. Olsen
Omena Woods Association
Mr. and Mrs. Alvin Owsley
Mr. and Mrs. Woodruff Palmer
Dennis Phillips
Robert and Ellen Pisor
Mrs. Hazel Porter
Thomas Price and Cynthia Carlson
Jean C. Raftshol
Lynda Raftshol
Mr. Curtis Raftshol
Mr. Warren Raftshol
Bill Rastetter and Cary Weed
Mrs. Jean S. Raymond
Roy and Ruth Reynolds
Bill and Coralyn Riley
Ms. Elizabeth McBride Roberts

Mary Ellen Robinson
Jean M. Sanborn
Cecily & Kurt Sanford & Family
Mrs. Frances Petty Sargent
Gary Schultheiss & Barbara Richman
Mr. and Mrs. D. Martin Scott
Ms. Jean Sedlacek
Jeff and Nita Send
Mr. and Mrs. Richard R. Seward
Mr. and Mrs. Richard Shuster
Dayton and Edith Simmons
Mr. and Mrs. William Slawson
Mr. and Mrs. Rossman W. Smith
Mrs. Edna Soper
Alan and Nancy Spinniken
Ms. Juliet Sprouse
Ann and Chris Stack
Jerry and Peggy Stanek
Michael and Theresa Steichen
Mr. B. Eugene Strang
Mr. and Mrs. Norman Strunk
Ms. Martha A. Teichner
Mr. and Mrs. Viktor G. Theiss
Hillary Thornhill Chapman Foundation
Mr. and Mrs. Brian M. Ursu
Mr. Douglas M. Van Zoeren
Tom and Alice Van Zoeren
Joe VanderMeulen & Bronwyn Jones
Victoria Creek Farms LLC
Phil and Barb Von Voigtlander
Jayne Leatherman Walker
Mr. Maitland Walker
Ms. Carol L. Waters
Mr. and Mrs. John B. Watkins
Lorraine Weber and Mac Lister
Ben and Cindy Weese
Mrs. Betty L. West
Dr. Mary C. White
Mrs. Howard R. Whitney
Ms. Constance Whittlesey
Dr. and Mrs. Robert L. Willard
Hamilton and Elizabeth Williams
Lucinda K. Willis
Ms. Julie Windham
Nona and Jay Windham
Mr. Norman Wollenweber



Richard O. Ristine Heritage Society

The Heritage Society recognizes donors who have shared in the mission of the Leelanau Conservancy by making a gift through a will, bequest, trust, annuity, insurance or other planned or deferred gift. This important group is helping to ensure the long term financial capabilities of the Conservancy. If you would like information about making a planned gift, contact Leslee Spraggins at the Conservancy.

Anonymous (23)
Barbara and William Alldredge
Christie L. and Bruce T. Alton
David and Jacqueline Amos
Gary and Christine Armbricht
Harold S. & Jacqueline F. Baase
J. Sumner & Irene G. Bagby
David Bahr
Ken & Mary Balcom
Mr. and Mrs. Patrick J. Barry, Jr.
Dr. Nancy Craik Beights &

Mr. Stephen Robert Beights
Dale and Joan Blount
Jim and Laura Brown
Mrs. Carol P. Burchfield
Chuck and Susan Cady
Mr. William S. Casier
David M. and Cara V. Cassard
R. Weston Caughlan
Rev. and Mrs. Albert A. Chaffee
William J. Charlesworth
Jim and Kay Charter
John and Linda Cloud

Margie Coggins
Mr. and Mrs. Edward J. Collins
Marie Eleanor Coppa
Mr. and Mrs. John G. Davey
Mr. and Mrs. Gilbert A. Deibel
Cheryl Donakowski & Frank Misplon
Ms. Nancy L. Dotlo
Mrs. Karen Douma
Jim and Sharon Doyle
Roland and Diane Drayson
Nancy R. and Berkley W. Duck
Tom and Gretchen Dunfee

Jack and Leah Dunn
David Edelstein & Jennie Berkson
John and Gina Erb
Erika and Dennis C. Ferguson
EJ and John Fitzpatrick
Courtney M. Font
Mr. and Mrs. Tom H. Fox
Dr. Pam Fraker
James Frederick
Ms. Judy L. Frederick
Douglas and Susan Freeman
Bob and Debbie Gilbert

Founders Society

The Founders Society recognizes those donors whose generous and long term support has resulted in cumulative lifetime giving of \$25,000 or more to the Leelanau Conservancy. Many of these individuals have also included us in their estate plans, which supports our future.

\$1 million and greater

The Carls Foundation
Mr. and Mrs. William L. Fortune, Sr.
Miss Sally Reahard
Chris and Ann Stack

\$500,000 - \$999,999

Anonymous (2)
Mr. and Mrs. Frank A. Bracken
Mrs. Ruth S. Fairchild
Mr. and Mrs. John W. Fisher
George & Mary Ellen Gotshall
Mr. and Mrs. John H. Hoagland
Mr. and Mrs. Eugene C. Miller
Clarence and Ruth Roy

\$250,000 - \$499,999

Anonymous (2)
Mr. and Mrs. Edmund F. Ball
Mario Batali and Susi Cahn
Rosemary R. Berardi and Carolyn R. Zaleon
The Brookby Foundation
Richard and Carolyn Chormann
Mr. and Mrs. Edward J. Collins
David Edelstein & Jennie Berkson
Edmund F. and Virginia B. Ball Foundation
Mr. and Mrs. William L. Elder
Esperance Family Foundation
Mr. and Mrs. William Y. Gard
George and Frances Ball Foundation
The Herbert H. & Grace A. Dow Foundation
John T. and Shirley Hoagland
Mr. and Mrs. Addison Igleheart
Will and Joan Larson
Mariel Foundation
The Oleson Foundation
Dr. and Mrs. Daniel Palmer, MD
Mr. and Mrs. Dudley B. Smith, III
Ms. Margaret H. Watkins
Mr. and Mrs. Warren H. Watkins

\$100,000 - \$249,999

Anonymous (6)
Americana Foundation
Andrew V. Kiselius Trust
Mr. and Mrs. John F. Ball
David M. and Cara V. Cassard
Cherry Republic
Mr. and Mrs. Howard M. Dean
Mr. and Mrs. Gilbert A. Deibel
Ms. Laura L. Deibel
Francie and John O. Downing
Jeff and Nancy Fisher
Mrs. Sue Frank
Enid and Rick Grauer

Mr. and Mrs. John T. Hackett
Mrs. William B. Hall
Mr. and Mrs. Ronald L. Jones
Lake Leelanau Lake Association
Mr. George Littell, Jr.
Mr. and Mrs. Steven Martineau
Larry Mawby and Lois Bahle
Craig A. and Nancy T. Miller
Mrs. Rose Oudemolen
Philip S. Harper Foundation
Dr. James Rae & Arleen Rakas-Mitchell Rae
Robert J. Trulaske Jr. Family Foundation
Ms. Catharine P. Roberts
Mr. and Mrs. Gordon H. Robertson
Rotary Charities of Traverse City
Walter and Leslie Schmid
Mr. and Mrs. Richard Shuster
Ms. Martha A. Teichner
David and Sally Viskochil
Ms. Karen R. Viskochil
The Wadsworth Family
Andy and Elizabeth Walters
E. Perry and Laurell (Wolfe) Webb
Joan and Randy Woods

\$50,000 - \$99,999

Anonymous (6)
The Ashken Family
Mr. William Bachman
Jennifer Baker and Stephen Fishbein
Mrs. Martha B. Baker
Mr. and Mrs. Robert Biggs
Mrs. Alexander M. Bracken
Mr. and Mrs. Ronald D. Brooks
Colin Gardner Foundation
Dellora A. & Lester J. Norris Foundation
Jeanne and Bill Dennler
Mrs. Jane W. Domke
Cheryl Donakowski & Frank Misplon
Mr. Martin M. Easling
Mrs. Bowman F. Elder
Gina and John Erb
Mr. and Mrs. John W. Fisher, III
Ms. Julia M. Flowers
Mr. and Mrs. Richard A. Funke
Mr. and Mrs. James C. Ganter
Jan Garfinkle and Mike O'Donnell
Edward Gergosian & Susan Hoekenga
Mr. and Mrs. Robert Goff
Jeff and Susan Green
Mr. and Mrs. Edward A. Ketterer
Mr. and Mrs. William J. Leugers, Jr.
Mr. George H. Littell

Mr. and Mrs. J. Michael Losh
Mrs. Mary E. Lyons
Mahogany Foundation
Mrs. Diantha C. Naftali
Mr. and Mrs. John D. Norris
Mr. and Mrs. Richard D. Oliver
Orion Foundation
Mr. and Mrs. Alvin Owsley
Thomas S. Porter
Porter Family Foundation
Max R. and Linda J. Proffitt
Mr. Ralph M. Reahard, Jr.
James and Gwendolyn Rich
The Ricord Family
Mr. and Mrs. Marvin C. Rorick
Mary Alice Schaff
Ms. Anne Schermerhorn
Mr. and Mrs. David T. Shelby
Anne Drackett Thomas
John and Mary Tris
Mr. Robert J. Trulaske, Jr.
W.K. Kellogg Foundation
Bruce and Betsy Wagner
Mr. George C. Weeks
Julie R. Weeks & Walter Hoegy
Ben and Cindy Weese
Mrs. Shirley L. Wheatley
Elizabeth Bracken Wiese & Fred Wiese
Mr. and Mrs. Harold G. Wilson
Mr. and Mrs. Peter Wilson
Michael and Kathleen Wysocki

\$25,000 - \$49,999

Anonymous (19)
Barbara and Bill Alldredge
Mr. and Mrs. George E. L. Barbee
Caroline F. Brady
Broadleaf Foundation
Maureen and Emil Brolick
Trish and Rick Bryan
Richard Cooper & Jan Tennant
Michael and Susan Craig
Mrs. Treva N. DeJong
Dole Family Foundation
Mr. and Mrs. Michael L. Dow
Tom and Gretchen Dunfee
Joseph Faggan
Feather Foundation
William Fortune, Jr. & Joseph Blakley
Mr. James W. Frederick
Mrs. Lurah Gilbert
Robert H. and Nancy M. Giles
Mr. and Mrs. Norbert W. Gits

Dan and Magee Gordon
Mr. and Mrs. John M. Gordon
The Gordon J. Hammersley Foundation
Grainger Matching Charitable Gifts Program
Don and Ann Gregory
Ms. Ann Hall
Mr. William S. Harper
Molly M. Harrison
Mr. and Mrs. A. Grant Heidrich, III
Rich and Beth Hoover
Omena Fund
Mr. and Mrs. David B. Howard
Mrs. Jeannette Hunt
J A Woollam Foundation
Mr. John Langdon
Jeff Later & Betsy Donahue
Frank and Conchita Lockhart
Dr. and Mrs. Michael G. Lockhart
Mary and Bill Loveless
Dr. R. William Lustig
David and Louise Lutton
M22 LLC
Mrs. John C. Manix
Mr. and Mrs. William F. Marsh
Dr. and Mrs. Robert J. McElroy
Mrs. Gertrude M. Oliver
Dr. and Mr. Nels L. Olson
Dr. and Mrs. Patrick Oriel
Mr. and Mrs. Denis B. Pierce
June and Jerry Powley
Jim and Marie Preston
Bill & Julie Pumphrey
The Paul and Katy Rady Family
Mr. and Mrs. Richard O. Ristine
Kati Rooney & Jim Hennessey
Chris Rowney and Siobhan Cafferty
Ms. Carolyn T. Russell
Mrs. Frances Petty Sargent
The Shelby Family
Mr. and Mrs. John P. Snedeker
Richard and Stacie Stephenson
Mrs. Louise Thomas
Tom Russell Charitable Foundation
Anne Miles Vaughan
Mr. and Mrs. Lawrence J. Verdier
Barbara W. Vilter
Mr. John B. Watkins
Robert L. Willard, M.D.
Mrs. Nancy P. Williams
Wayne and Sharon Workman

Karin & Clarence Goodlein
Elizabeth and Richard Gotsch
Enid and Rick Grauer
Jeff and Susan Green
Mr. Richard A. Grout
Michael Grover & Nunzio Lupo
Ms. Karen Hague
Georgienne Hammer
Mrs. Jane B. Hancock
Sherrie and Logan Hardie
Mr. William S. Harper
Mrs. C.L. Harrison, III
Mr. William R. & Dr. Julianne Hoff
Jack D. Hunter
Bart and Gail Ingraham
Kay Johnston & Jeff Sanborn
Bob Jones
Mr. John H. Katt
Mr. and Mrs. Edward A. Ketterer

Mr. and Mrs. Jack A. Krause
Will and Joan Larson
Mr. and Mrs. George I. Liljebblad
Steve and Marcie Lindo
Judy & Lynn Livingston
Dr. R. William Lustig
Anne J. Marszalek & Leonard P. Marszalek
Deborah and Steven Martineau
Larry Mawby
Lynn and Jim McAndrews
Dan and Susan McDavid
Rob & Anne Meermans
Craig A. and Nancy T. Miller
Ms. Mimi Mullin
Karen Mulvahill
Tom Nelson
Mrs. Jeanne M. Nielsen
Mr. Lawrence J. Noling

Allen and Ellen Northcutt
Mr. and Mrs. William D. Peace
Randy Petresh
Ovide & Cindy Pomerleau
Rasa Poorman
Thomas S. Porter
Jim & Marie Preston
Max and Linda Proffitt
Bill & Julie Pumphrey
Jean and David Redfield
Richard O. Ristine, Jr.
Gary Schultheiss & Barbara Richman
Jack and Susan Seaman
Cathy and Paul Sehnert
Mr. and Mrs. David T. Shelby
Ms. Janet Shroyer
Teena & Mike Shupert
Mr. and Mrs. Dudley B. Smith, III
Mr. and Mrs. Timothy J. Stein

Cheryl Stereff & Dennis Marchese
Avery Stier
Dr. and Mrs. Stephen Strobel
Dr. Nora Sugintas
Mr. and Mrs. Ben A. Tefertiller, Jr.
Amy and Brian Tannis
Mr. Terry Terhune
Dana K. Thomas
Mr. and Mrs. Ronald Tonneberger
Barbara W. Vilter
Phil and Barb Von Voigtlander
Bruce and Betsy Wagner
Mr. and Mrs. Warren H. Watkins
Larry and Marcia Webb
Julie R. Weeks
Harry and Susan Wiberg
Elizabeth Bracken Wiese & Fred Wiese
Nancy and Stuart Winston
Ms. Kathie A. Woods

2016 Donors

We apologize for any errors.
If your name has been omitted
or listed incorrectly, please
contact Betsy LePoidevin at
231-256-9665 or blepoidevin@
leelanauconservancy.org

* indicates Sustainers Circle Member

Champions (\$10,000+)

Anonymous (3)
Americana Foundation
Mr. and Mrs. Ian Ashken*
Jennifer Baker & Stephen Fishbein*
Dr. Rosemary R. Berardi & Carolyn
Zaleon
CDM Foundation
Richard and Carolyn Chormann*
Mr. and Mrs. George N. Cochran*
Dellora A. & Lester J. Norris
Foundation
Francie and John O. Downing
Edmund F. and Virginia B. Ball
Foundation
Gina and John Erb*
Mrs. Ruth S. Fairchild
Family of Sally & Dan Johnson
Mr. and Mrs. Jeffrey E. Fisher*
Mrs. Sue Frank*
Mrs. Margot S. Funke*
Grand Traverse Regional
Community Foundation
Greater Saint Louis Community
Foundation
The Greeney Family
The Homestead
Rich and Beth Hoover*
Mr. and Mrs. Addison Igleheart*
Mr. Daniel L. Johnson, Jr.
Mr. and Mrs. Edward A. Ketterer*
Will and Joan Larson*
Mr. and Mrs. William J. Leugers, Jr*
M22 LLC
Mariel Foundation
The Estate of Lynelle Marolf
Mr. and Mrs. Steven Martineau*
Larry Mawby and Lois Bahle*
Jim and Jan Norris*
The Oleson Foundation
PPG Industries Foundation
Bill & Julie Pumphrey*
Pyromation
Raymond James & Associates, Inc.
Kati Rooney & Jim Hennessey*
Mr. and Mrs. Arthur J. Samberg
Mr. and Mrs. Ross G. Satterwhite*

Mrs. Donna L. Schiff
Walter and Leslie Schmid*
The Brookby Foundation
Barbara W. Vilter*
The W.D. Foundation
Bruce and Betsy Wagner*
Andy and Elizabeth Walters
Mr. and Mrs. Warren H. Watkins*
Mr. George C. Weeks
Julie R. Weeks & Walter Hoegy*
Elizabeth Bracken Wiese & Fred
Wiese*
Mr. and Mrs. Peter Wilson*
Joan and Randy Woods*

Advocates (\$5,000-\$9,999)

Anonymous (2)
Mr. and Mrs. Daniel C. Appel *
William and Julie Bachman
Paul Solli and Kristine Ball *
Mr. and Mrs. George E. L. Barbee
Mario Batali & Susi Cahn
Mr. and Mrs. Emil Brolick*
Hy and Nancy Bunn Family*
Jeanne and Bill Denner*
Katharine Weston Dexter
Jeff and Susan Green*
Don and Ann Gregory*
Ms. Nancy Hoagland*
HRD-C Foundation*
David and Linda Kaltenbach*
Bud and Nancy Liebler*
Ms. Julia L. Long
Mr. and Mrs. J. Michael Losh
David and Louise Lutton*
Patrick McCarthy, MD*
Mr. and Mrs. Archibald McClure III
Scott and Luvie Myers*
Mr. and Mrs. Richard D. Oliver
Oliver Family Foundation
Dr. and Mrs. Daniel Palmer, MD*
Joshua Pokempner & Gretchen
Gardner
Mr. and Mrs. Max Proffitt*
Gary and Beth Rauch
Mr. and Mrs. David Redfield*
Ms. Joanne L. Sprouse*
Steelcase Foundation
Richard and Stacie Stephenson*
Susan and Viktor Theiss*
Theodore Eckert Foundation
Toledo Community Foundation
Mrs. Barbara V. Wilson*

Partners (\$2,500-\$4,999)

Anonymous
Barbara and Bill Alldredge*

Gershon and Suzanne Berkson*
Marion and Gene Cartwright
David M. and Cara V. Cassard*
Cherry Republic*
Dianne Christensen and Roy
Christianson
Richard Cooper & Jan Tennant*
Cummings Christensen Family
Foundation
Mr. Joseph Faggan
Mr. and Mrs. John W. Fisher, III*
Ms. Julia M. Flowers*
Edward Gergosian & Susan
Hoekenga*
Tracy J. Harrison & Victor
Peterson*
Mr. and Mrs. A. Grant Heidrich, III
Dr. Jeffrey Johnson
James and Laurie Kletzien
Mrs. Barbara A. Krause*
Mr. and Mrs. George Littell, Jr.*
Dr. and Mrs. Michael G. Lockhart
K. James Yager and Margaret Maier
Mr. and Mrs. Donald K. Marik*
Karen Mulvahill & Dan Malski*
The Nancy M. & Victor S. Johnson
Jr. Foundation
Jim and Marie Preston*
Drs. Thomas and Elizabeth Price
Prologis Foundation
Mrs. Lu Rorick*
Dr. and Mrs. David J. Smith, Jr.*
Mr. and Mrs. Ulrich A. Straus
Mr. and Mrs. G. Neil Tyler
Mr. and Mrs. Tom Wille*
Andy and Kendra Wise
John Worst and Ruth Tucker

Benefactors (\$1,000-\$2,499)

Anonymous (2)
A2M2, LLC
Porter and Anita Abbott*
Dorothy Stites Alig & Will Higgins
Mrs. Mary C. Allen*
Christie L. and Bruce T. Alton*
David and Jacqueline Amos*
Andy J. Egan Company, Inc.
Ann Hall Charitable Fund
Gary and Christine B. Ambrecht*
Mr. John F. Ball
Mary Barber*
Barnabas Foundation
Battelle Always Giving
Nancy and Joe Belton*
Mr. and Mrs. Gregory J. Besio*
Mr. and Mrs. Robert Biggs*
Jonathan and Julia Birge*
The Boston Foundation
Kurt M. Bowden & Nancy Dady*

Richard and Barbara Bowzer*
Alexander and Sally Bracken*
Mrs. Helen A.P. Bradley
Mr. and Mrs. Peter W. Brooke*
Trish and Rick Bryan*
Kate Bulkley & Ross Biddiscombe*
Frank and Sharon Bustamante
Chuck and Susan Cady*
Dr. and Mrs. Ronald Caldwell
Mary Beth and Phil Canfield
John and Anne Chafee
Chemical Bank
The Chicago Community Trust
Don and Marylou Coe*
Ms. Sterling H. Cole
Mr. and Mrs. Edward J. Collins*
The Columbus Foundation
Community Foundation for
Southeast Michigan
Community Foundation of
Louisville
Dr. and Mrs. Michael W. Craig*
Ron and Peggy Creten
Mary Cusick and David Wible*
Elizabeth Garber Daniels*
James and Gayle Davis
The Dayton Foundation
Drs. Paul Dechow & Joanne Blum*
Mrs. Treva N. DeJong*
Ron and Marion Dickel
Mr. and Mrs. Michael L. Dow*
Mr. Hank Dow
Mr. and Mrs. Hayward L. Draper*
Roland Drayson*
Mary L. Duchi
Nancy R. and Berkley W. Duck*
Beverly and Jim Duff*
Mr. and Mrs. Roger Edgley*
Bill and Mary Fallon*
Jonathan Feld and Shelley
Longmuir*
Mr. and Mrs. James A. Fisher*
Mr. and Mrs. Jerrold M. Fisher
Matthew and Kelli Fitzgerald*
Mr. and Mrs. John Fitzpatrick*
Mrs. Janice W. Fleming*
William Fortune, Jr. & Joseph
Blakley*
Mr. and Mrs. Thomas H. Fox*
Dr. Pam Fraker*
Mr. James W. Frederick*
Ms. Judith Gage
Mr. and Mrs. Richard M. Gans*
Mr. and Mrs. Andrew Gerben*
Sandra Gianturco & William
Bradley*
Jeffrey and Marcia Gibson*
Bob and Debbie Gilbert*
Steve Gilbreath*

Benefactors (\$1,000-\$2,499)

Continued...

Robert H. and Nancy M. Giles*
Mr. David Giles*
Bill and Pat Gillula
Ellie Golden*
Dan and Magee Gordon*
Mr. and Mrs. Michael Gordon
The Greater Cincinnati Foundation
Groundwork Center for Resilient

Rob and Linda Lanphier
Dr. and Mrs. Albert LeBlanc
Mr. and Mrs. Henry Lederman*
Dave and Bridget Lemberg
Dr. Christopher J. Lingle*
Mr. Thomas B. Littlewood*
Mr. and Mrs. William Loveless, II*
Mike and Lori Lyman*
Leon and Pamela Lysaght*
Mr. and Mrs. Millard H. Mack*

Mrs. Paula M. Robertson*
Jon and Julianne Robinson
Rochester Area Community
Foundation
Mr. and Mrs. Scot C. Roemer*
J. Franklin Roesner & Kristin Adams
Mr. and Mrs. James R. Scarlett*
Jim and Jayne Schafer*
Dr. William C. Scharf*
David and Lisa Schimmel*

United Methodist Foundation of
Michigan
United Way of Northern New Jersey
Mr. and Mrs. William VanWesten*
Mrs. Anne M. Vaughan
Mr. and Mrs. Howard Veneklasen
Beth Verhey and Daniel Toole*
Ms. Karen R. Viskochil*
William Vogt and Claire Eberwein*
Tim and Jill Vollbrecht
Elizabeth and James Waters
Larry and Marcia Webb*
Wedbush
Mrs. Elise I. Weisbach*
Tim Werner and Petra von Kulajta
Jim and Kathy Westlake*
Mrs. Nancy P. Williams*
Mr. Todd Wills
Nancy and Stuart Winston*
Mrs. Pauline Womac*
Mike Wooldridge & Charyn Hain
Mr. and Mrs. Michael Wysocki*
Dr. Andris A. Zoltners*
David and Kenna Zorn*

**“Look deep
into nature,
and then
you will
understand
everything
better.”
-Albert
Einstein**



Patrons (\$500-\$999)

Anonymous
Barbara Abbott and Larry Hauser*
Mark and Connie Adamson*
Barry and Lynn Adler
Susan Ager & Larry Coppard*
Ms. Jane Aisenbrey
Suzanne Albrecht & Steve Redding*
William and Nancy Allen
Peter and Vicki Alpaugh*
Mr. and Mrs. William Alvin*
American General Life Insurance
Company
William C. and Vicki Anderson*
Mr. and Mrs. Gary E. Anderson*
Ms. Sally S. Appel*
Ms. Phyllis Archambeau
Ed Arlin and Deb Greenman*
Mr. & Mrs. Dennis A. Armbruster*
Ms. Jane T. Babbitt
Irene G. and J. Sumner Bagby*
Randy Baidas and Will Reeves
Mrs. Martha B. Baker*
Judy and Bruce Balas*
Robert & Jeanine Ball*
Andrew Bamford & Tamera Wales
Mr. and Mrs. David L. Banks
Mark and Marilyn Bareman
Glenn and Patty Barnes*
Susan Bass and Tom Bradford*
Roger and Jan Bauer*
Ginny and Scott Beall*
Ms. Ann Beaujean

Communities

Dick Grout*
Michael Grover and Nunzio Lupo*
Mr. Charlie N. Hall*
Mr. William S. Harper*
Molly M. Harrison*
Harvest Foundation
Harvey S. Firestone, Jr. Foundation
Susan and Jack Hayes*
Timothy Hefferon and Leeann
Konrad*
David and Betsy Hendricks*
John T. and Shirley Hoagland*
Drs. John and Judy Hoeffler*
William and Suzanne Hoff*
Mr. and Mrs. Kent N. Holton*
Paul Howes and Cynthia Johnson*
HP Foundation
James and Diana Huckle*
Daniel Inman and Catherine Little
Mr. Thomas C. Jones*
June 8th Foundation, Inc.
Mr. and Mrs. Jeff Kane*
Todd and Jean Kennell*
Sandra Kilinski and Larry Ganz*
Ms. Jane Kohring
Jeffrey and Jane Krynsinski
L. Mawby Vineyards
Lucy L. Lambert*
Land Trust Alliance

Anne H. Magoun*
Mr. Leonard P. Marszalek*
Mr. and Mrs. Ben D. McCallister, Jr.
Mr. and Mrs. John V. N. McClure
Bill McCroly & Leslie MacLin*
Mr. and Mrs. Clyde E. McKenzie*
Mr. and Mrs. Stephen J. McShane*
Craig A. and Nancy T. Miller*
Dr. and Mrs. David W. Miller*
Mr. and Mrs. G. Robert Miller
The Minneapolis Foundation
Annabel and Robert Moore*
Mr. and Mrs. Michael Muladore*
Mr. Lawrence J. Noling*
Mr. Frank Noverr*
Mr. and Mrs. Thomas Oetinger*
Charles and Connie Olson*
Dr. and Mrs. Patrick Oriel*
Laura Gits Paine*
Philip S. Harper Foundation
Tom and Martha Phillips*
Mr. and Mrs. Denis B. Pierce*
Tom and Burma Powell*
Mr. and Mrs. George J. Quaderer*
David Reinisch and Julie Kiefer*
Renaissance Charitable Foundation
Mr. and Mrs. James H. Richards*
Shawn Ricker and Steven Cacossa*
The Ricord Family*

Ms. Marcia Scully
Brian and Sally Shapiro
Daniel C. Shoup & Anne Bishop
Shoup*
Paul Skiem and Beth Brooks*
Mr. and Mrs. Allan Smith*
Mr. and Mrs. John P. Snedeker*
Mr. David L. Spargo
Chris and Ann Stack*
Mr. Chris Stack, Jr.*
Mr. and Mrs. Justin A. Stanley, Jr.*
Mrs. Marilyn H. Steele
Cherrie and William Stege
Robert Steinhilber & Mary Jo
O'Connor*
Stephanie Schlatter Art
Jim and Beth Stephens*
Mr. and Mrs. Samuel Stott
Mr. and Mrs. George Strietmann*
Mrs. Candace K. Sutfin*
Mr. Tom Swift*
Ms. Martha A. Teichner
The Jerry and Marcia Tubergen
Foundation
Tom's Food Market
Mr. and Mrs. Ronald Tonneberger*
John and Mary Tris
Mr. and Mrs. Jerry L. Tubergen*

2016 Donors

Patrons (\$500-\$999)

Continued...

Andre Begosso and Amy Cannon*

Jill Berkeley & Larry Goldman*

Patrons (\$500-\$999) Cont.

Mr. and Mrs. P. James Bernardo*

Drs. Lindsay and Mark Bibler*

Troy R. Biddix and Melissa Hill

William Biedenstien

Biggs Construction Service

Mrs. Alice G. Bingham

David and Chari Binstadt*

Kathleen and John Birney*

Black Star Farms

Mr. Brian Blood

Dr. and Mrs. Dale M. Blount*

Blustone Vineyards

Boathouse Vineyards LLC

Mr. and Mrs. Gilbert A. Bogley*

Mr. and Mrs. David A. Bohmer

Mr. Jack A. Bosgraaf

Mr. and Mrs. Russell G. Bow

Carol and Lee A. Bowen*

Will and Margee Bracken

Caroline F. Brady

Michael and Sherri Brom

Guy and Meg Brossy*

Bill and Natalie Brown

Mr. and Mrs. Gary G. Brown

Tom and Marsha Buehler*

Mrs. Katharine Bulkley*

Walter and Karen Bulkowski

Jeff and Debbie Burt

Kevin & Barbara Norgaard Byrns

Alicia Caldecott

Mr. and Mrs. David Camiener

Drs. Nancy Cantor & Steven

Brechin*

Capital Insurance Group

Ms. Lucille Capra*

Mr. and Mrs. Mark Carlson*

Kyle and Betsy Carr*

Ms. Cathryn Carter*

John Chapman and Candance

Daley*

Karen L. Chase & David Bellizi*

Mr. and Mrs. David Chesterfield

Jim and Gwen Chesterfield

Vijay and Ann Chitkara

Mrs. Betty C. Clarke*

Dean Manikas & Susan

Cocciarelli*

Mike and Tedi Collier*

Michael and Barbara Collins

Mr. & Mrs. William T. Collins, Jr.*

Michael and Michelle Connell*

Mr. and Mrs. James Cooper

Marie Eleanor Coppa*

Mrs. Carolyn L. Crane

Henry Crevensten & Carlin Senter

Dr. and Mrs. Keith L. Curtis*

Custom Stems

The Dabney & Lavin Family

Mr. Jay Dankovich*

Mr. and Mrs. Daniel W. Darland*

David and Barbara Burkhardt

Mr. and Mrs. Daniel J. Devine*

Mr. and Mrs. Thomas Dickinson*

Candy and Ted Dickson

Adele and Page Dinsmore*

Mr. and Mrs. Jeffrey E. Dixon*

Conrad and Judith Donakowski*

Mr. and Mrs. Philip A. Donatelli

Ms. Nancy L. Dotlo

Mrs. Karen Douma*

Dr. Stephen E. Kozelko DDS

Mr. and Mrs. Gary P. Drew*

Eugene E. & Elaine C. Driker

William Drozdalski & Linda

Janman*

Harry and Beth Drucker*

Tom and Gretchen Dunfee*

Harriet Dunlop*

Dr. and Mrs. John P. Dunn*

Mr. and Mrs. John R. Dye*

David Edelstein & Jennie Berkson*

Ms. Sherry D. Edwards*

Jack and Karen Elder

Aaron and Jennifer Ellenbogen*

Don and Gae Ellery

Ms. Margaret Ellibee

Mr. and Mrs. Robert Elliott*

J. Richard Emens & Beatrice E.

Wolper*

Emerson

Mrs. Mary Emmett*

Mr. and Mrs. Vincent Engerer*

Joe and Dawn Erhardt*

Robert and Barbara Featherly*

Dr. and Mrs. Robert E. Fellows*

Erika and Dennis C. Ferguson*

Ms. Susan J. Finke*

Mr. and Mrs. Paul J. Finnegan*

Mark and Betsy Fisher*

Mr. and Mrs. G. Stephen Fisher*

Mr. and Mrs. Michael Fleishman*

Robert and Gloria Floden*

Matt and Courtney M. Font*

James and Kathryn Fonte*

Mary L. Forster, M.D.*

Dr. and Mrs. Richard K. Foster*

Drs. Robert Foster & Valarie Miner*

Doug and Julie Frazier

Mrs. Ruth M. French*

David Friar and Rorie Lewis*

Jim and Sally Friend*

Ms. Jane L. Gale*

Carl Galeana*

Nancy Gallagher & Kevin Weber*

Drs. Marc and Linda Gallini*

James and Kathy Ganley*

Mr. and Mrs. Lee H. Gardner*

Ms. Judith E. Gass*

William and Bertha Gebo*

Mr. Paul Gerhart*

Mr. and Mrs. Norbert W. Gits*

Dr. and Mrs. Robert F. Gleffe

Mrs. Janet E. Goettle*

Dr. and Mrs. David Gordon*

Ms. Maria Gotsch

Enid and Rick Grauer*

Greater Kansas City Community

Foundation

Mr. and Mrs. John S. Greeno

Jerry Gretzinger & Meg Staley*

Jim and Mary Jo Grogan*

Mr. and Mrs. Steve Grossmann*

Lori and Steve Grossnickle

Ms. Karen Rubner Grotberg

Mr. and Mrs. James Groves

GTRCF - The Rotary Endowment

Fund

Mr. Forrest Gunderson*

Ms. Renae Gurthet

H. Fort Flowers Foundation

Bruce and Cynthia Hagen*

Mr. Robert L. Hagerman*

Mr. and Mrs. Rick Halbert*

Mollie and Chuck Hall*

Mr. and Mrs. Jeff Hamilton*

Jeff and Ilze Hammersley*

Dr. and Mrs. Timothy B. Hanley*

Pat and Linda Hanniford

Ms. Dorothy Hanpeter*

Mr. and Mrs. Edward C. Hanpeter*

Mr. Paul Hanpeter*

Mr. and Mrs. Alan E. Hartwick*

Judith Case & Karl Hausler*

Bev and Dan Heinz

Ms. Mary Helmick*

John and Christy Hennessey

Mr. and Mrs. Jeff Hennig

Mr. and Mrs. David Herr*

Frederick and Judith Hill*

Linda and Denny Hoemke

Mrs. Nancy Hollowell*

Thomas Hooker and Kristen Rabe

Mr. John H. Hoppin, Jr.*

Michael Huey & Christian Witt-

Dorring

Mrs. Ann Huffman*

Mr. Jack D. Hunter*

John and Kathleen Imboden*

Ms. Catherine E. Irwin*

Steve and Maggie Jackson

T. Michael and Joan Jackson*

Mr. and Mrs. Mike Jacobson*

Mr. and Mrs. John Jahoda*

Susan and Jerry Janecke

Mr. and Mrs. Kalin S. Johnson*

Mr. and Mrs. Ronald L. Jones*

Dr. David Kam*

Geoff and Deborah Kammerer

Mr. and Mrs. Michael Kaplowitz

Michael Kaselnak & Michelle Taylor*

Alan and Teri Kasper*

Mr. and Mrs. Mike Keen*

Mrs. Janet H. Kelley

Jamie and Polly Jo Kemler*

James and Linda Kemper*

Ms. Susan Kettering*

Mr. and Mrs. John J. Kinsella

Mr. and Mrs. Steven Klein*

Mr. and Mrs. David E. Kleiner*

Mr. Charles Knapp*

Mr. and Mrs. Thomas Knighton*

Thomas and Mary Ann Knowles

Dick and Sherry Koenig*

Mr. and Mrs. Jack A. Krause*

Mr. and Mrs. Franc Krebs*

Mr. and Mrs. Arthur J. Kubert*

Don and Jeanne Kunz

Benjamin Kusner & Jack Bedell*

Joseph Lada and Gary Cozette*

Penny and Jamie Ladd

Mr. and Mrs. Stuart Laing*

Mr. and Mrs. John A. Laitala*

Mr. and Mrs. Douglas G. Lake*

Claude Lambert*

Thomas and Bridget Lamont*

Mr. and Mrs. Theodore J. Lanham*

Mr. and Mrs. James W. Leenhouts

Ms. Linda LeMieux*

Betsy and Dana LePoidevin*

Joe and Kim Leugers*

Mrs. Nancy H. Liley*

Mr. and Mrs. Lloyd Lindner

Mr. and Mrs. John Ling*

Mr. and Mrs. Todd Lininger*

Mr. and Mrs. Richard H. Lippert

Frank and Conchita Lockhart*

Mr. and Mrs. James R. Lockhart*

Mr. Ron Lovasz

Ms. Ruth Lovingood-Finke*

Drs. Scott and Mary Beth K. Lowe*

LPL Financial

Steven Luebkeman & Sara Later*

Kurt and Eleanor Luedtke*

Dr. R. William and Jeri Lustig*

Patrons (\$500-\$999)

Continued...

Dr. and Mrs. James Lutz*
Mr. and Mrs. Mark J. Lyons*
Ms. Theresa Maday*
Mr. & Mrs. Themistocles L. Majoros*
Ms. Nancy L. Malecki*
Al and Susan Manson*
Dan and Lynne Mapes-Riordan
Ms. Josephine Marquis*
Mr. and Mrs. Karl Marsh*
Kristi and Earle Martin*
L. Craig and Nancy Martin*
Mr. and Mrs. Robert T. Martin*
Mrs. Ann and Conrad Mason*
Marvin and Marlo Matson*
John and Janet Mattson
P. Michael and Kathryn May*
Dr. and Mrs. William J. McCool*
Kate and Halley McDonald*
Dorothy McGavran
Steve McGraw and Bobi Morey*
Mr. and Mrs. Doug McInnis*
Mr. and Mrs. Stafford McKay*
Mr. and Mrs. Glenn M. McNett*
Mr. R. Duncan McPherson
Jeff and Erin McRae
Mr. and Mrs. Donald Mead*
Mr. and Mrs. Franklin B. Mead*
Mrs. Mary Ann Meanwell*
Rick and Sally Meese*
Dr. Lisa Meils*
Mr. and Mrs. Leon B. Michael*
Mr. and Mrs. David L. Michelmore*
Vina and Phillip D. Mikesell*
Andrew and Janet Miller*
David and Catherine Miller*
Mr. and Mrs. Frederick Miller*
Dr. and Mrs. Jerry A. Miller*
Laurence and Melisa Miller*
Mr. and Mrs. Reed Miller
Bob and Marcia Moglia*
Sacha and Jane Montas*
Jim and Jeanne Montie*
Mr. Robert R. Morse, Jr.
Michael and Theresa Morton*
Mr. Cyril Moscow
Lyn Motlow*
Mrs. Karen A. Mudgett
Tom and Janet Mug*
Ms. Mimi Mullin*
Ann and Don Munro*
Annette and Eric Munson*
Tom Nelson and Stephanie Berger-Nelson*
Dr. and Mrs. Thomas Newland
John and Leslie Nilsson*
John Nitschke & Jean McLaren*
Mr. and Mrs. Thomas Nixon

Norbert and Paula Gits Foundation
Allen and Ellen Northcutt*
Jim Nugent and Toddy Rieger*
Ms. Kiku Obata
Edward & Caroline G. Oberndorf*
Ocean Reef Community Foundation
Charles and Sara Ofenloch*
Nancy and James F. Ohlinger
Ms. Susan P. Oliver*
Kathryn Eckert Omoto*
Dr. and Mrs. Michael W. O'Riordan*
Dr. and Mrs. Mark Orringer*
Michael Ouzounian & Trish Rogers*
Ron Paczkowski & Judy Talbott*
Ms. Julie Page
Mr. and Mrs. Jerry P. Palmer*
Mr. David Patton*
Mr. and Mrs. William D. Peace*
Dr. and Mrs. Jeffrey Pearson*
Mr. L. Harlan Peck
Pershing
Mr. Randy Petresh*
Ms. Mary V. Petterson*
Donn and Kathleen Piatt*
Robert and Ellen Pisor*
Plante Moran Trust
Mr. and Mrs. Michael Plessner*
Dick and Nancy S. Pobst
Mr. J. Dwight Poffenberger, Jr.
Mrs. Bobbie S. Poor*
Mr. Richard Potter*
Mr. John Preston
Mr. and Mrs. Brian R. Price*
Prism Publications, Inc./Traverse the Magazine
Mr. and Mrs. Clayton A. Prugh
Jack and Janice Purse*
Vance and Catherine Querio*
Lori Holstege and David Quimby*
Ms. Margaret M. Raben
Bert and Helene Rabinowitz*
Mr. and Mrs. Eric R. Ray*
Mr. and Mrs. John H. Ray*
Polly Rea*
Mr. and Mrs. Stephen Read
Ms. Alexis M. Reid*
Doug and Beth Reid*
Dr. Raymond E. Reinert*
Peachy and John Rentenbach*
Keith Reynaud and Molly Donahue
Ms. Sandra Ringlever
Mr. and Mrs. John W. Risk*
Mr. and Mrs. Robert J. Roberts*
Carl Robinson and Karen Fujisawa*
Ms. Melanie A. Rogers*
Bill and Kate Rohlf*
Mr. Thomas M. Rooks*
Michael and Vicki Ross*
Mrs. Ricky Ross*
Mr. and Mrs. Richard A. Rossman*

Dr. and Mrs. Todd H. Ryan*
Seth Sadis and Kristen Verhey
Mrs. Barbara A. Sander
Thomas Sawyer & Kate Sawyer Vilter*
Mrs. Mary Elder Schaff
Phil and Kathy Scherer*
Mr. and Mrs. Robert Schlueter*
Thomas and Suzanne Schoeneberger
Todd and Sheila Schorer
Mr. and Mrs. Milford J. Schuette*
Mary Jo Schuld*
Gary Schultheiss & Barbara Richman*
Jack and Susan Seaman*
Ms. Joan H. Searby*
Jim and Cathy Searing*
Mrs. Rosalind B. Sell*
Anne and David Shane*
Carrie A. Sharp*
Ms. Patricia Sharpnack*
John Shoaff & Julie Donnell*
Shugart Builders
Mr. Richard Shuster*
Mrs. Mary J. Siddall
Barbara and Frank Siepker*
Cindy Eppolito and Charles Silver*
Jim Simons and Shirlee Affhalter*
Ms. Alice Sklansky
Mr. William Slater*
Paul and Margaret Sloan*
Mr. and Mrs. Alton Smith*
Andy and Marietta Smith
Cynthia Greig and Richard Smith
Doug and Sally B. Smith*
Stephen and Sandra Smith*
Mr. and Mrs. John B. Snyder*
Ms. Lianne Somerville*
Dr. and Mrs. David E. Spathelf*
John and Leslee Spraggins*
Darlene Stanley & Harry Zoccoli*
Mr. and Mrs. John H. Stanley
Mr. and Mrs. Terry B. Stanton*
Mike and Marie Stearns
Mr. and Mrs. Timothy J. Stein*
Mrs. Eleanor B. Stephenson
Mr. Charles G. Stockwell*
Jean and Bob Stoessel*
Don and Tricia Stogsdill*
Mr. and Mrs. James J. Stukel
Mr. and Mrs. W. Richard Summerwill*
Mrs. Laura L. Swire*
Michael and Terry Tarnow*
Mr. and Mrs. Peter Taylor*
Richard and Sera Thompson*
Mike and Ginny Toal*
Dan and Sue Tobin*
Tour de Glenn Cyclists*

Mrs. Jeanne Townsend
Ms. Kathy M. Tuckerman*
Dennis and Kathy Turner*
Bob and Trudy Underhill*
Mr. and Mrs. Timothy J. Unger*
United Jewish Foundation
United Way of Tarrant County
Mr. and Mrs. Gary C. Valade*
Mr. and Mrs. Bill Valpey*
Mr. and Mrs. Joseph M. Varley*
Mr. Larry Viskochil
Phil and Barb Von Voigtlander*
Ms. Sylvia Vong
Karen Wachs and Joe Farrell*
Carl and Dorothy Walker*
Mr. and Mrs. F. Jon Walter*
Tom and Jenna Warburton
Andrew and Molly Watkins*
Mr. and Mrs. David K. Watkins*
Sheen and David Watkins*
Doug and Jackie Watson*
Weathervane Vineyards, Inc.
Mr. John Weber*
Ben and Cynthia Weese
Mr. and Mrs. Paul Weiner
Mrs. Marjorie M. Weinheimer
Mr. and Mrs. George R. Wellman*
Dr. William W. Wells*
Dr. and Mrs. R.A. Westphal*
Mr. and Mrs. Daniel R. White
Wildlife and Wetland Solutions*
Dr. Robert L. Willard*
William Harris Investors, Inc.
Brian Williams & L. Fisher-Williams*
David Williams & Kim Herbert*
Mr. and Mrs. George R. Wills*
Ms. Jane Wilsher
Barbara and Eric Winkelman*
Mr. and Mrs. Daniel M. Witten, II*
Mr. Peter C. Wolcott*
Mr. and Mrs. Dave Wollenhaupt*
Mr. and Mrs. James Woodhull, II
Caroline and Edwin Woods*
Wayne and Sharon Workman*
Douglas and Jennifer Wyatt
Mr. and Mrs. James C. Wynn
Douglas and Bonnie Yingst
Bruce and Susan Young*
Marilyn and Gregg Zank*
Mr. M. Richard Zinman
Mr. and Mrs. John Zubik*

Stewards (\$250-\$499)

Geoff Abbate and Marty Eisenbarth
Alexion
David Alpers
Mr. Matt Anhut
Ms. Jane Baker

2016 Donors

Stewards (\$250-\$499)

Continued...

Kenneth and Mary Balcom
Mr. and Mrs. John F. Ball, Jr.
Mr. and Mrs. Carl H. Ballou
Mr. and Mrs. George A. Basta, Jr.
Rob and Shelly Batterbee
Mr. David S. Battle
Ron and Jane Becker
Dr. and Mrs. Royce L. Beers
Mr. Russell Bell
Ms. Marcia Bellinger
Mr. and Mrs. Ran Bellows
Lisa Benjamin and Tyler
Hesterhagen
Mrs. Carol Benner
Mr. and Mrs. John Bennett
Barbara Bierlein & Tom Dillon
James G. and Ann H. Bingham
Drs. Peter and Eleanor Blitzer*
Janis Bobrin and Mike Allemang
Gina and Ron Boe
The Boeing Company
Dr. Amy G. Bolmer
Dr. and Mrs. Gregory G. Bond
Andrew and Yolanda Bone
Mr. and Mrs. Philip Boria
Ben Bowmaster
Mrs. Ruby Brach
Bregman Brothers LLC
Mr. and Mrs. John H. Breniser
Bryan and Eaton Brown
Karla and Scott Brown
Ms. Sandra Buell
Brig and Merrill Buettner*
Steven and Barbara Bursian
Mr. & Mrs. George A. Cantrick, Jr.
Mr. and Mrs. Jack L. Carpenter*
Robert Carr & Lydia Arnold
Mr. and Mrs. David Carroll
Al and Dee Chaffee
John and Marsha Chamberlin
Ms. Aileen Chetcuti
Dr. Mary Ciotti
John and Liz Clark
J. Preston and Nina Cory Claytor
Carol and David Clifford
Mr. and Mrs. John M. Cloud
Coldwell Banker Schmidt Realtors
Jeanne Cole and Jonathan Ledsky
Mr. Dennis R. Colling
Michael Collins & Margaret Grano
Community Foundation of the
Holland/Zeeland Area
Mr. Robert L. Cook

Mr. and Mrs. E. Neal Cory, II
Dr. and Mrs. Vincent Couden
William and Patricia Crean
Daniel Frisch Architect PC
Mr. and Mrs. William E. Dean
Mr. James Deaton
Mr. and Mrs. Carl M. DeFaria
Annette Deibel*
Dennis and Ambrosia Dennehy
Mike and Sue Downs
Mr. and Mrs. Joe Dressel
Stephanie and Mark Duckmann
Bruce and Lynn Dunn
Easling Construction Company
George and Mary Eggenberger
Mr. and Mrs. Rolf Embertson
William and Martha Encherman
Epicure Catering
Tom and Juli Erdmann
Dr. Claire Ernst & Al Bedecarre
Mr. and Mrs. Gregg Fazzoni
Dr. David S. Feenstra
Mr. and Mrs. Jack Ferguson
Mr. Buzz Finke
Mrs. Cathleen C. Fisher
Mr. and Mrs. Roger H. Fitch
Ms. Nancy Fleming
Mr. and Mrs. James Fleser
Kenneth Floody & Elizabeth
Freebairn
Donald and Kathryn Frerichs
Deborah Froeb and Tim Gardner
Mr. and Mrs. David T. Gardner
Phil Garrison and Patricia McGee
Mrs. Barbara F. Gentile
Ms. Cynthia Goodrick
Mrs. Elizabeth W. Gotsch
Mr. and Mrs. David Grauer
Mr. and Mrs. Larry L. Graves
Mr. and Mrs. Thomas N. Griffith
Mr. Rod Groleau
Mr. Michael W. Hall
Mrs. Barbara B. Hall
Charles and Judith Harris
Harvey's Foundation
Gordy and Jeanne Hatt
Michael and Jeanne Haynes
Mrs. Lucy L. Hazlegrove
Lynn and Diane Hedeman*
Matt Heiman and Karrie Zeits
Mr. Matthew Heiss
Mr. and Mrs. Thomas Hiatt
Skip Hibbard & Nancy Elkind
Donald and Ann Highlands
Mr. and Mrs. Robert L. Hinkle
Mr. William A. Hoffman

Terry and Ruth Hoiles
Douglas and Cindy Hull
Mrs. Barbara A. Irwin*
Michael and Susan Jacoby
Brian and Jennifer Jaffe
Mrs. Mary E. Jellema
Jay and Betsy Johnson
Mr. and Mrs. Bradley J. Johnson
Douglas and Ann Julien
Mr. and Mrs. Michael E. Kenney
Pat Kernaghan and Janet Ward*
Mr. Alan T. Kirby
Mrs. Judy Komarek
Leonard and Janet Krawiec
Lee Kremin & Marjolijn
Van der Velde
Dr. Karl T. Kristen
Mr. and Mrs. James D. Kuras
Robert Kurtz and Molly O'Toole
David and Judith Kurtz
Mr. and Mrs. Bradley E. Laffrey
Ms. Susan Lamb
Ms. Diane G. Lambert
Mr. & Mrs. Edward O. Lanphier, II
Peg and John Larson
Marla and Dick LaVanture
Ms. Karen Ledsky
Steven Lee and Julie Tarr
Leelanau Cheese Company
Leelanau Enterprise
Mr. and Mrs. David M. Leiser
Anne Leugers and Elmer Lipp
Lincoln Financial Foundation, Inc.
David P. Lloyd
Gus and Katie Lo
Susan L. Lowell
John and Barbara MacDougall
Mr. and Mrs. Robert H. MacKenzie
Mrs. Cleo P. MacMillan
Maple Lane Motel and Resort
Ms. Lucy W. March
Karen C. Martin
Mr. William Martin
Bill and Jan Maxbauer
Tim and Anita McCabe
Linda McCarthy
Mr. and Mrs. Gary McCausland
Jill and Mike McDonnell
Kristi McKenzie and Frank Sellgren
Martin and Karen McPhee
Mr. & Mrs. Michael J. McWilliams
Mr. and Mrs. Richard C. Mileham
Drs. Robin Lin Miller & Miles
McNall
Richard and Jami Moore
Lori and Stephen Moreland
Mr. John Morris
Richard and Abby Mortensen

G. Michel Mott and L. Kim
McManama
Mr. and Mrs. Dennis Murphy
Dr. and Mrs. Joseph B. Naoum
Dr. Janet Navarro
Frederick C. Neidhardt
Mrs. Ann Nichols*
Jeffery and Susan Nielson
Mrs. Janey Odell
Rich and Adrienne Odell
Amy J. Otto
Mr. and Mrs. Steven A. Owsley
Alan and Kimberly Page
Mr. Wes Parker
Mr. William D. Peace, Jr.
Joe and Zoe Pearson
Pepsico Silicon Valley Community
Foundation
Gerald and Mary Peterson
Pfizer Foundation
Edmund and Ann Piet Anderson
Anneke and Guy Plamondon
Brian Farmer & Abigail Pohlonski
Ms. Denise Poloyac
Dr. and Mrs. Robert Pool*
Glenn and Rasa T. Poorman
Thad and Nancy Popa
Ms. Donna Popke
Mrs. Sally Ray
Ms. Laurie G. Remter
Jim Richardson
Mr. and Mrs. Ronald R. Robinson
Steve and Sue Rohde
Phil and Kate Roos
Mrs. Marcia L. Rose
Mary Cobb and Peter Rouselet
Jim and Suzy Royce
Cecily & Kurt Sanford & Family
Ms. Joan E. Schleef
Michael and Colleen Schmitt
Mr. and Mrs. Edward D. Schocker
Matthew and Alyson Schoenfeldt
Martha R. Seger
Mr. and Mrs. John Sensenbrenner
John and Susan Sentell
Mr. and Mrs. James R. Shannahan
Mary and Bob Shapton
Mrs. Patricia D. Shea
Ms. Patricia Shiley
Mr. and Mrs. Jeff Shutz
Michael and Karen Sinclair
Mr. and Mrs. Robert Smart, Jr.
Eric Smith & Elasa Schaff Smith
Mr. Thomas Smith
Ms. Deborah Somerville
Dr. John Spencer
Quinton and Margaret St. John
Mr. and Mrs. Jerry J. Stanek
Larry Stockline

Stewards (\$250-\$499)**Continued...**

Mr. and Mrs. John Sweet
 Cynthia and Bruce Taggart
 The Taglauer Cabin
 Ms. Lisa Taylor
 Amy and Brian Tennis
 Abbot and Josie Thayer
 The Timberland Group
 Kathy and Hy Thomas
 Three Sisters Foundation
 Shannon and Chris Torres
 Erin Trame and Carrie Turner
 Perry and Mary Tresh
 Carol and Ruben Trono
 Umlauf & Dun, P.C.
 Martha Van Eenenaam-Iwanicki &
 Tom Iwanicki
 Mr. and Mrs. Ken VanElslander
 Van's Garage
 Warren and Julie Veltman
 Linda and Doug Verellen
 The W.W. Group, Inc.
 Ms. Harriet Wall
 Julie Walter
 Brice and Stephanie Weeks
 David Weisbach and Joan Neal
 Mr. and Mrs. Edward Weller
 Stephen and Kathleen Weller
 Mr. Max Wendell
 Mr. and Mrs. Douglas Whitley
 Lisa Wilsher & Steve Chamberlin
 Mr. and Mrs. Richard N. Wilson
 Mr. and Mrs. John Withee
 Jack and Carol Wixted
 Norman and Susan Woerle
 Ms. Barbara L. Wright
 Dr. Stephen A. Wyatt
 Duke Yoon
 YourCause, LLC
 Mr. and Mrs. John J. Zevalkink
 George and Kathleen Zink
 Mr. and Mrs. Michael Zipser,
 Attny/CPA
 John and Sheri Zoeller
 Zurcher Tire Inc & Best One Tire
 Linda and Joel Zylstra

Contributors (\$100-\$249)

Anonymous (14)
 Georgia C. Abbey
 Ms. Joanie Abbott
 Ms. Anne F. Adams
 Mr. & Mrs. Weston W. Adams, Jr.
 Mr. & Mrs. Weston W. Adams, III
 Mr. and Mrs. Robert D. Aicher
 Thomas and Judy Aja
 James and Annie Albanice
 Ms. Gloria Albrecht
 Ms. Harriette P. Ald
 Mrs. Frances H. Alexander

Tom and Nancy Alfieri
 Mr. and Mrs. Robert L. Alflen
 Terry and Sandra Allen
 AmazonSmile Foundation
 Loretta Ames
 Dr. and Mrs. Gordon Amidon
 Dr. and Mrs. David G. Anderson
 Mrs. Mary H. Anderson
 Paul and Melisse Anderson
 Mr. William H. Anderson
 Ms. Susan Anderson
 Mr. and Mrs. James P. Andres
 Tom and Marsha Andres
 Mr. and Mrs. Charles J. Andrews
 Frank and Maria Angileri
 Mr. and Mrs. Richard W. Antle
 Ms. Mary Appel
 Ms. Virginia Lois Ardelean
 Mike and Ruth Arents
 Mrs. Lisa E. Armas
 David Armbricht and Sally Kotani
 Sara and Rick Armbruster
 Art's Tavern
 Mr. and Mrs. Jim Aufderhaar
 Mr. and Mrs. Louis E. Aug
 Ms. Kristi Avery
 Rich and Cassie Axtell
 Mr. and Mrs. John G. Bachman
 Bahle Enterprises, Inc.*
 Mr. Stephen Bahlke
 Mr. David Bahr
 Dr. and Mrs. Walter M. Baird
 Laura Baird and George Zulakis
 Joe and Rasa Baker
 Mr. and Mrs. Fred Bakker-Arkema
 Peter and Lauren Bakker-Arkema
 Mr. and Mrs. David F. Ball
 Mrs. Lena A. Ball
 Mr. and Mrs. John M. Ballantyne
 Mr. and Mrs. Mike W. Bandy
 Mr. and Mrs. William A. Bannasch
 Ms. Patricia Bard
 Mr. and Mrs. Gary Bardenhagen
 Cynthia and Ted Barker
 Donna and Bill Barker
 Bruce Barnes and Kathy Marciniak
 Mr. and Mrs. Patrick J. Barry, Jr.
 Mr. and Mrs. Bruce Barton*
 Mr. and Mrs. Don Baty
 Mr. and Mrs. Peter Bauer
 Carol and John Baughman
 Thomas and Virginia Baxter
 Jack and Renee Beam
 Becky Thatcher Designs
 Mr. and Mrs. John E. Beeskow
 Ms. Margo Behler
 Mr. Stephen & Dr. Nancy Beights
 Ms. Jennifer Bell
 Dr. and Mrs. Carl Benner
 Rt. Rev. & Mrs. Charles Bennison

Ms. Anne Hatcher Berenberg
 Vicki Berglund & Andy Gould
 Steven and Christina Bergmans
 Mr. and Mrs. Duane Berkompas
 Blake and Angela Bernard
 Sue Berron & Kim Schaefer
 Jeffrey and Margaret Beusse
 John Bevington & Tina
 Greene-Bevington
 Ms. Susan Bhagat
 Mr. and Mrs. Dan Biber
 Gary and Wendy Bice
 Mr. Charles W. Binder
 Duane and Jean Bingel
 Mr. and Mrs. Michael W. Binsfeld
 Edward and Joan Birrell
 Tom and Gwen Bischoff
 Jerry and Dody Blackstone
 Stephen & Patricia Jones Blessman
 Mr. and Mrs. Robert W. Bloom
 Dr. and Mrs. Harry M. Blount*
 Mr. and Mrs. William C. Bobbs
 Ms. Joan C. Bock
 Mr. Linton Bodwin
 Paul and Karen Bolhuis
 Mrs. Sally B. Booth
 Mr. and Mrs. Peter A. Borden
 Mr. and Mrs. Dave Borton
 Thomas and Susan Boucher
 Mr. John Bourbonnais
 Mr. John Bourgault
 Mr. Daniel J. Boynton
 Ms. Marcia J. Boynton
 Steve and Elizabeth Bradbury
 Mr. & Mrs. Christopher E. Branson
 Hugh and Catherine Brennen
 Mrs. Dorothy M. Brenner
 Brian and Cathy Brenton
 Mr. Timothy Brick
 Barbara J. Briner
 Scott and Wendy Broshar
 Lee Brothers
 Judy & Meg Brown & David Ward
 Mrs. Carolyn R. Brown
 Jim and Laura Brown
 Richard and Joanne Brown
 Michael and Jeanine Bruening
 Ms. Jean Brugger
 Mr. Gerald Bryan
 Mr. William W. Bryant
 Fredrick Budd and Donna Wilds
 Mr. and Mrs. Richard W. Budinger
 Theresa and Gasper Buffa
 Mr. H. Michael Buhler
 Dr. R. John Bull*
 Paul and Tanya J. Bulhuis
 Mr. and Mrs. Charles J. Bumb
 Mrs. Carol P. Burchfield
 Joe and Joni Burda
 Phil and Laura Burk

Mr. and Mrs. Keith W. Burnham
 Mrs. Avery L. Burns
 Dr. and Mrs. Paul D. Burstein
 Chuck and Susan Buxton
 By the Bay Garden Club
 M. Christine Byron & Thomas
 Wilson
 Carl and Ginna Campbell
 Frederick and Denise Campbell
 Mrs. Maureen Campbell
 Mr. and Mrs. Michael P. Campo
 Mr. and Mrs. Howard W. Cann, III
 Jackie Cantalupo
 Mr. David G. Card
 Eleanor and Chris Cares
 Russ and Taryn Carew
 Mr. and Mrs. H. James Carleton
 Tom and Dorothy Carlson
 Ms. Margaret Carmody
 Ms. Gayle L. Carpenter
 Linda Carps
 Thomas and Denise Frieder Carr
 Dan and Barbara Beeker Carruth
 Mrs. Sally Casey
 Philip Castillo & Susan Rundle
 Michael and Kavitha Celentino
 Mr. and Mrs. David D. Cell
 Jim and Linda Chalant
 Richard and Judith Chalfant
 Charles Chamberlain & Ann Nowak
 Ms. Charlotte Chamberlain
 Mr. and Mrs. Stephen C. Chambers
 Mr. and Mrs. William J. Chambo
 Joe and Sybil Chandler
 Mrs. Joan Chandler
 Mr. Christopher Channer
 Greg and Barbara Chapman
 Mary Ann and Reuben Chapman
 Mr. and Mrs. Robert Chapman
 Chateau Fontaine
 Bill and Anne Chatfield
 Chef's Pride Catering
 Cherry Bay Orchards, Inc.
 Mr. and Mrs. Donald Christie
 Jerry and Mary Faggan Churchill
 David and Kristen Clark
 Mr. and Mrs. Willard F. Clark
 Donald and Barbara Clay
 Mr. and Mrs. Allan J. Claypool
 James E. Cleworth
 Drs. Steven and Molly Cline
 John and Donna Clingerman
 Dotti Clune and Jill Henemyer
 Bob and Pattie Coffaro
 Mr. Douglas Cole
 Andrew Cole & Emily Lammers
 Mr. and Mrs. John D. Coleman
 Mr. and Mrs. Pope Coleman

2016 Donors

Contributors (\$100-\$249)

Continued...

Ronald and Sally Cole-Misch
Grant Cone and Tracey Paddock
Mr. William C. Connelly
Anita Constant, Jane Gard & Terry Meyers
Mr. and Mrs. Glenn E. Cook
Mr. and Mrs. Richard G. Cookman
Cheryl Cooper
Karl and Tracy Cooper
Ted Cornell and Nancy Schwartz
Greg and Helen Cosma
Mr. and Mrs. Daniel B. Cote
Jim and Lynne Cowart
Molly and John Crabb
W. Scott Craig & Carol Bawden
Frank and Mary Crane
Ms. Lynne Crane
John and Kitty Cranor
Ms. Kathleen J. Crispell
Mr. and Mrs. Alexander Cruden
Crum & Forster
Carol and Dan Cruz
Mr. and Mrs. Roger Cummings
Mr. Cedric G. Currin
Jim and Diana Cusser
Mr. and Mrs. Stephen J. Custer
Renie and Barry Cutler
CyberGrants Inc.
Mr. Michael Dailey
Ms. Carolyn Danielson
Ron and Susan Dannenberg
Mr. Donald D'annunzio
Janet and Nicholas Darby
Joan D'Argo
Douglas and Rozanne Darland
George and Maryellen Daston
Mr. and Mrs. John G. Davey
David Wright Directions LLC
Nancy and Tom Davies
Mark Davis and Mary Kranstover
Ms. Catherine M Davis
Michael and Dixie Davis
Susan Schrimpf Davis, DO
Mrs. Lynne S. Dawson and Family
Ann and Richard DeBoer
Mrs. Sherry A. Deeg
Mr. and Mrs. Daniel L. Deering
Deering Tree Service
Joe Defors & Jan Rygwelski
Mrs. Diane P. DeHuff
Dale and Meg DeJager
Ms. Maureen J. Delaney-Lehman
Gregory and Lucie Demanski

Ms. Laura Demanski
Mr. R. Garret Demarest
Mrs. Michelle Denny
Joyce, Michael & Thomas Deren
G. Paul and MaryAnn Derosa
Tom and Audrey DeVault
Bob and Jan DeVries
Mr. and Mrs. Robert DeVries
Mr. Gino DiClemente
Kevin Diels and Jane Damschroder
Mr. and Mrs. Paul F. Diller
Kathy Dinkel
Dave and Carol Dixon
DMD Marketing Corp.
Mr. Ted Dobbels
Mr. and Mrs. William L. Dockter
Ms. Kathleen Doherty
Mrs. Renie Dohrmann
Kathleen Dolson & Christopher Spilling
David & Cynthia Domanchuk
Mrs. Jane W. Domke
Ms. Carole Donaldson
Mrs. Maureen T. Doran
Robert and Nancy Doughty
Mr. Andrew Doyle
James and Kelly Doyle
Jennifer and Bill Doyle
Paula and Bryce Dreeszen
Bill and Peggy Driehorst
Ms. Elissa Driker
Mrs. Elizabeth Drinkaus
Mr. Robert Dubrow
Mr. and Mrs. Michael DuBrul
Mr. and Mrs. Donald H. Duff
Mr. and Mrs. Jack Duffy
Bob and Rae Dumke
Mr. and Mrs. C.R. Dunn
Drs. Michael and Carrie Dunn
Sen. and Mrs. Richard Durbin
Mr. and Mrs. James E. Dutmers, Jr.
Mr. and Mrs. G. Thomas Dutmers
Ms. Barbara A. Duvall
Mr. and Mrs. Delbert Dyche
EA Companies, Inc.
Mr. and Mrs. Gregory L. Ebel
Thomas Ebeling
Mr. and Mrs. Richard Eby
Mr. and Mrs. Aaron Edick
James and Jill Egan
Mr. Eric Egeland
Mrs. Judith M. Egeler
Mr. and Mrs. Kenneth W. Eike, Jr.
Mr. and Mrs. Robert Elliott
Mr. and Mrs. John A. Ellis
Fred and Nancy Elmore
Bob and Judy Elsey
Mrs. Lin Emmert
John and Linda Engelhard
Ms. Sally Erickson
William and Wendy Erzen
Ms. Judy Erwin
Mr. Albert A. Evans
Gail and Keith Evans
Mr. and Mrs. Daniel Ezekiel
Mrs. Jeanne P. Falberg
Dr. Julie Faller & Robert Schub
Laurence and Catherine Fallon
Mr. and Mrs. Hugh A. Farber
Nancy and James Farese
Walter and Marjorie Farrell
Ms. Susan V. Fehrenbach
Ms. Betty Feinberg
Mrs. Georgie L. Fenton
Andrew and Lita Ferdinand
Rev. and Mrs. Gerald Ferguson
Mr. Mason Ferry
Fidelity Brokerage Services LLC
Ms. Amy Filarski
Pete and Julie Finch
Mr. Harry J. Finke, IV
Fischer's Happy Hour Tavern
Mr. and Mrs. Jud Fisher
Peter and Cassidy Fisher
Ken and Kris Fishman
Nancy Fitzgerald & Jerry Agnew
David Foley & Margaret Willman
Mr. Richard W. Force
Glenn and Kim Ford
Allen and Nancy Forsaith
Mr. Eugene Forster
Forty-Five North Vineyard and Winery
Robert and Mary Foster
Mr. Chuck Fraenkel
Mr. Andrew W. Frank
Edmund Frank
Sam and Kelly Frank
Charles and Julie Frayer
Ms. Judy L. Frederick
James S. and Judith N. Freeman
Mrs. Nancy P. Freeman
Michael Gadbaw & Sally Chandler
James, William & George Gaggos
Mrs. Shirley A. Gain
Gallaghers Farm Market
Dr. Bruce Galler
Mr. and Mrs. J. Carl Ganter
Mr. and Mrs. Paul D. Gard
Ron and Chris Gardhouse
Stephen Gardner, Jr. & Margot Nacey
David and Brooke Garratt
Mr. and Mrs. Billy R. Garwood
Mr. T.H. Gasteyer, II

Mrs. Lynne I. Gauthier
Mr. and Mrs. Norm J. Gauthier
Mr. and Mrs. Jack Gaziano
David and Sharon Geisler
Paul and Teri Gelter
Ms. Mary Gibb
Michael and Reta Gibbons
Mr. William W. Giegerich
John Gierak and Dona Tracey
Thomas and Kirsten Gilbert
Scott and Erin Giles
Mr. and Mrs. Charles A. Gilfeather
Mr. Ed Gill
Donald Gilligan & Regina Maniscalco
Mr. and Mrs. Richard Ginsburg
Dr. and Mrs. James Girardy
Carl and Marsha Giroux
Mrs. Frances M. Gits
Ms. Victoria Rea Gits
Mrs. Aurora Glettler
Richard and Marianne Glosenger
Mr. and Mrs. Richard J. Goettle, IV
Mr. Richard S. Golas
Victor and Denice Goldschmidt
Mr. and Mrs. Steven J. Goldstein
Heather Gaffney and Jeffry Goliber
Dr. and Mrs. James D. Goodspeed
Mr. & Mrs. William B. Goodspeed
Mr. and Mrs. Harvey Gordon
Sarah Gordon and Martin Saad
Cindy Goris
Dr. and Mrs. Jack W. Gottschalk
Gourdier-Fraser, Inc.
Ms. Mary Graham
Marvin Grahn and Christine Hauke
Grand Traverse Pie Company
Allan and Sydel Grant
Laurie and Joe Grant
Anne and Jeffrey Grausam
Patricia J. Green
Ms. Paula Greeno
Martha Greenough & Katharine G. Pitt
Rick and Fran Greenup
Jeanne and Mike Greenwood
Mr. and Mrs. Robert Gregory
Mrs. Linda Gregory
Mr. and Mrs. Terry Gretzema
Mr. and Mrs. Richard Grewe
Mr. and Mrs. Mike Groleau
Mr. and Mrs. James H. Gross
Mr. and Mrs. Raymond Gross
Mr. and Mrs. John E. Grote
Mr. Gerald Gruska
Thomas Guback & Sylvia Linde-Guback
Mr. and Mrs. Michael D. Gudenau
Mr. and Mrs. Christopher Haber

Contributors (\$100-\$249)**Continued...**

Mr. George Haberer
Mr. Charles R. Haberlein, Jr.
Mr. Andrew Hackenberger
Mr. and Mrs. James Hackenberger
Mr. and Mrs. Donald E. Hacker
Mr. and Mrs. Ronald L. Hackleman
Juliet Hafford and Barbara Trippe
Mr. Craig Hamilton
Mr. and Mrs. Carl F. Hammond
Mr. Steve Hammond
Mr. and Mrs. James Hampton
Mr. and Mrs. Bradley T. Hanpeter*
Mrs. Charlotte G. Hanpeter
Shane and Ann Hansen
Sherrie and Logan Hardie
Ms. Barbara Hardy
Mr. and Mrs. Dan S. Harkness
Mr. and Mrs. Paul Harkness
Anne Harper and Greg Nobles
Kirk and Liz Harrington
David and Marcia Harris
John C. and F. Susan Harrison
Mr. and Mrs. Michael T. Hartigan
Mr. and Mrs. R. Tucker Hawkins
Kim and Grey Hayes
Randal and Molly Heemstra
Mr. and Mrs. Jerry L. Heiman
Howard and Kathleen Heinzel
Mr. and Mrs. James Heinzman
Mr. Mark Helfers
David and Sharon Hendricks
Dennis and Lynne Hendricks
James Hengelbrok & Mary
Haberland
Jim and Cheryl Henry
Dr. and Mrs. Gregory L. Henry
Maureen and Jens Hensel
Mr. and Mrs. Steve R. Hext
Mr. Timothy Hinckley
Craig and Lindsay Hine
Lisa Hinkelman and Bob Heine
Warren and Suzanne Hinsch
Mr. and Mrs. Warren K. Hinsch
Theresa Hitchens
Mrs. Carolyn B. Hobart
Tracy Hobbs and Edward Sullivan
Mr. and Mrs. Gary Hoensheid
Gale Holcomb and Jennifer Reid
Lloyd and Christeen Holdwick
Sheila Holm & Pat Morgan
Ken and Carol Holt
Drs. Paul and Teresa G. Holtrop
Mr. and Mrs. Jay Homan
Mr. and Mrs. Ralph S. Hommel
Mr. and Mrs. John Honney
Dr. and Mrs. J. Michael Hoog
J. Stephen and Leslee Hooper
Andrew and Catherine Horning
Alison Horton & Kathy Kaczynski

Mr. Wes Hough
Dave and Mary Hovest
Mr. and Mrs. Michael R. Howard
Mr. and Mrs. Brian Howe
Mr. and Mrs. Terrence Howe
Mr. Gilbert Hudson
Rowell and Alice Huesmann
Christopher and Elizabeth Hughes
Mr. and Mrs. Gary J. Hughes
Mr. Thomas Hunt
Mr. and Mrs. David D. Hunter
Ms. Susan M. Huntzicker
Dan and Barb Hurlbutt
Ms. Brenda J. Husband
Ms. Amy Hutchinson
Mr. and Mrs. James R. Hutchison
Mr. Steven Huter
Tom and Kathy Hy
Steven Hyde
Richard Hylwa & Kathryn Allen
Mr. Doug Ibold
Mrs. Ruth L. Iezzoni
Illinois Tool Works Foundation
Mrs. Monica Inchaustegui
Jerry and Carol Inman
Win and Kyle Irwin
Mr. James B. Isabell
Dr. and Mrs. Paul Izenberg
Mr. and Mrs. John P. Jackson
Lary and Sarah Jackson
Kristen Jahoda and Adam Durst
Mr. and Mrs. John T. Jameson
Mr. John T. Jameson, III
Lee Jameson & Barbara
Nelson-Jameson
Burton and Shelly Jamieson
Mr. and Mrs. David Janizek
Dr. and Mrs. Albert B. Janko
Mrs. Joan K. Janowsky
Mr. Alex Jemal
Mr. Donald E. Jensen
Douglas B. Jester & Colleen Barry
Mrs. Barbara Jillson
Mr. and Mrs. Daniel W. Johnson
Mr. and Mrs. Jefferson N. Johnson
Dr. and Mrs. Richard S. Johnson
Mr. Robert H. Johnson
Todd and Amanda Johnson
Dr. and Mrs. Tom M. Johnson
J. Kay Johnston & Jeff Sanborn
Mrs. Marilyn D. Johnston
Matt and Kelly Johnston
Mrs. Ruth Jolliffe
Ms. Ann Jones
Bob and Sylvia Jones
Ms. Louise Coleman Jones
Ms. Judy Jorgenson
John and Janet Juarez
Mike and Sarah Julien
Joe and Beth Junewick

Mr. and Mrs. Robert F. Karner
Ms. Kari Karr
Mr. John H. Katt
Mr. and Mrs. Charles R. Kaufman
Bonnie and Dick Kay
Paul and Yoka Kaye
Michael and Mary Kedzierski
Ms. Grace Keeble
Mrs. Linda Kehr
Mr. and Mrs. Scott Keller
Michael and Susan Kelley
Mr. & Mrs. Charles H. Kellogg, Jr.
Mrs. Jacquelyn Kellogg
Alisann and Chuck Kepler
Ms. Jane M. Kersjes
Mr. and Mrs. Richard F. Kiernan
Don and Jan Kiessel
Jason and Sandy Kimpel
Mr. James F. Kimpel
Mrs. Susan D. King
Mr. and Mrs. Raymond Kingsley
Dan Klein
Mr. and Mrs. Mark Kleiner
Christopher and Joan Kmotorka
Bruce and Barbara Knapp
Ms. Nancy Knight
Bryan and Katie Koehler
Sandy and Rick Koehler
Mr. and Mrs. Konrad D. Kohl
Mr. and Mrs. Lawrence D. Kohl
Mr. and Mrs. Douglas Kohlbeck
Mera and Hallie Kohler
John and Maria Kolozsvary
Mrs. Susan Konop
Mrs. Ruth Korzon
Mr. and Mrs. John R. Koschara
Richard Kosinski & Deborah Ochs
Larry and Bonnie Koskela
Mr. and Mrs. Norbert Kot
Mr. and Mrs. Bryane E. Kowalewski
Mr. and Mrs. Jeff Kozisek
Mr. Walter J. Kraimer
Mrs. Joan H. Kramps
Mr. and Mrs. Charles Kraus
Mr. and Mrs. David Kroll
Darcy Brandel and Todd Kropp
Margaret Kryda
Mr. and Mrs. Peter F. Kunz
Ms. Sara Kupferer
Eric and Grace Lacey
Mr. Greg LaCross
Mr. and Mrs. James Ladd
Scott and Rhonda Lammers
Jim and Anita Lamont
Greg and Pam Landa
Mr. and Mrs. Lawrence Lander
Mr. Rachel Lane
Mr. and Mrs. Bruce D. Lang
Mr. Robert C. Lanphier, III

Stephen LaRiviere & Jennifer
Yanover
Mr. and Mrs. Thomas R. Larkin
Lynne and Robert LaSarge
Mr. and Mrs. Stephen Later
Tom and Pam Laureto
Mrs. Doreen A. Lawton
Mr. and Mrs. Frederick Leaske
Dr. and Mrs. Russell A. LeBlanc
Dr. and Mrs. William J. Lee
David Leece and Kathy Brewer
Mrs. Judie Leece
Mr. and Mrs. George A. Lemcke
Mrs. Deloris Leppink
Ms. Jennifer Leugers
Mark and Lori Leugers and Family
Mr. Martin Leugers
Mr. and Mrs. Paul T. Leugers
Thomas and Diane Leugers
Skip and Liz Leupp
Gerald Levine & Sarah Pokempner
Ms. Ruth A. Lezotte
John and Cynthia Lhost
Ms. Nell Licklider
Ted and Pat Ligibel
Mr. Brian Liljeblad
Mr. and Mrs. Ed Lindeman
Larry and Lorraine Liszewski
Ms. Rebecca Loftus
Nick and Kathy Lomako
Chris and Dawn Marie Lorentson
Staton and Carol Lorenz
Bill and Karen Lott
Mr. and Mrs. Richard A. Love
Ms. Kristen Lund
Mr. and Mrs. Donald E. Lund
Mr. Joel A. Lutz
Mr. and Mrs. Donald W. Lystra
Ms. Mary MacDonald
Mrs. Esther M. Mack
Daniel and Lillian Mahaney
Mr. and Mrs. Peter S. Maher
Hugh and Georgia Makens
Mr. and Mrs. J. Parke Malcolm
Ray and Penny Malcoun
Ms. Meg M. Mallon
Marlis Mann and Tom Skinner*
Michael and Lesli Marasco
Barry and Debbie Marsh
Mr. Vance Marshall
Wendy and John Martin
Mr. Don Martines
Mr. and Mrs. Richard J. Mashke
Kate Mason & Mary Lee Miller
Dr. Victor Mastaglio
Lynn Mathia and Ron Woodall
Mr. and Mrs. Jerry May
Ms. Lisa May
Gary and Cheryl Mazurek

2016 Donors

Contributors (\$100-\$249)

Continued...

Lee and Ross McAninch
Mr. and Mrs. Michael P. McCalden
Mr. Woody McCally
Mr. and Mrs. Kevin J. McCarty
Mr. and Mrs. Richard McClear
Charles and Judith McConnell
Dan and Susan McDavid
David and Catherine McDowell
Mr. and Mrs. James G. McGovern
Ms. Susan B. McHugh
Ed McInnis & Patty Payette
Harold and Kanda McKee
Bob McKelvey
Mr. and Mrs. Charles D. McKenna
Jeri McKeon-Andersen & David Andersen
Bill McKinley and Judith Briggs
Bob and Cathy McKinley
T. William and Betty McKinney
Allan and Mary McKisson
Mr. Leon McLain, II
Tom and Shirley McLenithan
Mr. and Mrs. Gary McLeod
Mr. and Mrs. John McLoughlin
Larry McMahon & Linda Anderson
Mr. and Mrs. S. Craig McMillan
Mr. and Mrs. John L. McNamara
Paul and Julie McNeilly
Ms. Barbara McNitt
Bob and Sukie McNutt
Ms. Gaytha McVay
Andrew Medlar and Brian Aker
Mr. and Mrs. George N. Meeker
Rob and Anne Meermans
Greg and Linda Meide
Mr. and Mrs. James P. Meil
Mr. and Mrs. John W. Melstrom
Brian D. Melzian, Ph.D.
Ms. Susan Merryman
Mr. Jeffrey Messacar
Ms. Andria Metrakos
Mr. and Mrs. James P. Meyer
Mrs. Ann P. Meyers
MI Milk Producers Assn. & Employees
Pat and Laura Michael
Ms. Sara Michael
Amy Middleton & Therese Durkin
Saulius and Lisa Mikalonis
Nancy Mikolaitis & William Hinds
Ms. Ann O. Miller
Dennis Miller & Daina Briedis
Gerald and Rita Miller

Greg and Suzanne Miller
Dr. and Mrs. Keith W. Miller
Phillip and Ayumi Miller
Mr. and Mrs. Richard Miller
Mrs. Susan Miller
Mr. and Mrs. Robert G. Milne
Susan and David Milne
Mr. and Mrs. Fred Missad
Mr. David Mitchell
Mr. and Mrs. Robert Mitchell
Mr. and Mrs. Charles Moffett
Mr. and Mrs. Donald Molten
Mr. Patrick Monaghan
David Monforton and Anne Vanderkloot
David L. Monstrey & Katherine Heil
Ms. Donna Montague
Casey Moore
Jeffrey Moon and Joselyn Moore
Ms. Jennifer R. Moore
Karen and Bob Moore
Mr. and Mrs. Preston D. Moose
Mr. and Mrs. Kevin D. Moran
Corey and Sarah Morgan
Andrew Morrill and Marie Knoerl
John and Nancy Morris
Mr. and Mrs. Michael D. Morris
Gary A. Morrison
James Morrison
Mr. and Mrs. Andrew B. Morrow
Mr. and Mrs. James M. Moskalik
Ms. Martha R. Moyer
Mr. and Mrs. William Muempfer
Mr. and Mrs. Jerry K. Muir
Mr. and Mrs. Timothy Mulherin
Mr. and Mrs. Michael F. Mulvaney
Sharon Murphy & Sharon Montonye
Ken and Pat Musson
Dennis and Leigh Ann Naas
Si Nahra & Judy L. Mardigian
Brooke A. Nash & Bruce Fulford
Mr. and Mrs. David A. Nash
Mr. Richard Nash
Mr. Charles Needham
Mr. and Mrs. John D. Nehil
Tania and Carter Neild
Mr. John A. Nelson
Mr. Carl Nemeth
Mr. and Mrs. Alfred K. Neugebauer
Mr. and Mrs. John G. Neuman
Mr. and Mrs. Carrol R. Nichols
Mr. and Mrs. Ronald N. Nichols
Mr. and Mrs. Timothy J. Nichols
Mr. and Mrs. David Nitschke

David Noling and Victoria Bailey
Catherine and Robert Noonan
Paul and Christine Norman
Northport Pottery
Ms. Cynthia Nowak
Jane and Jason Nuzzo
Pat and Marlene O'Connor
Dale and Sue O'Donnell
Maria and Dave O'Donnell
Joseph Ohren & Sandra Berman
Mr. and Mrs. David D. Olson
Dr. and Mr. Nels L. Olson
Steve Olson and Lynn Wilsher
Mr. and Mrs. Michael Oltersdorf
Dr. Robert and Zibby Oneal
Ms. Ellen F. O'Neill
Nancy and Bill O'Neill
Mr. and Mrs. William J. Orcutt
Stephen and Ami Orr
Oryana Food Cooperative, Inc.
Mr. and Mrs. Robert E. Overmyer
Ms. Marie Owen
Mrs. Luvian Owens
Russ and Jane Packard
Heather Paddison and John Muir
Mr. and Mrs. Scott W. Pandorf
Mr. and Mrs. G. Bruce Papesh
Mr. and Mrs. Keith E. Parker
Mary Anne and Bob Parks
Roy and Helen Patterson
Mr. and Mrs. Thomas Pavelka
Mr. and Mrs. Albert Pawlick
Mr. Jerry R. Pearson
Geoffrey Peckham & Patricia Melzer
Mr. and Mrs. Henry Peet
Victor and Bette Peirce
Ms. Norma J. Pemberton
Ms. Kathryn Penfold
Ms. Linda Peppler
Mr. Blake Perrigo
Dr. and Mrs. Burton L. Perry
Elmer and Ruth Peterman
Ms. Audrey Petersen
Mr. Erik Peterson
Mr. and Mrs. John J. Peterson
Ms. Patricia Petrat
Larry and Rebecca Peyton
Mr. and Mrs. Raymond Pezzi
Tom and Christine Pfennig
Christina Pfeufer
Dennis Phillips
Mary and Ben Phillips
Sally and Mason Pilcher
Patricia Pollock and Mark Rodak
Cindy and Ovide Pomerleau
Steven and Janet Popper
Barry and Susan Porter
Thomas S. Porter

Mark and Manie Powell
Kurt and Maria Pregitzer
Larry and Lauren Prentice
Mr. and Mrs. James D. Price
Mrs. Angeline R. Pruis
Mr. and Mrs. Rodger H. Pruis
John and Lyn Dolson Pugh
Jim and Mary Pulsifer
Mrs. Bette M. Puschel
Mr. and Mrs. Jack S. Putnam
Jack and Diana Putnam
Jeff and Jane Puvogel
Royce Ragland and Ken Bloem
John and Bonnie Raines
Ms. Laura Ramus
Dr. Stuart C. Rankin
Bill Rastetter and Cary Weed
Larry and Carolyn Rawsthorne
Mr. and Mrs. Thomas D. Reay
Steve and Connie Reddicliffe
Mr. Everett Redmond
Mr. and Mrs. Ronald L. Reimink
Ellen and John Reister
Mr. and Mrs. Scott Rempala
Mr. and Mrs. Dewey J. Renneker
Mark and Krista Rensland
Mrs. Ruth M. Reynolds
Mr. and Mrs. Ronald G. Rhoads
Suzanne and Walter Rice
Ms. Patricia Richardson
Rob and Marylou Riday
Mrs. Louisa Ridgway
Ms. Carol E. Rigg
Bill and Coralyn Riley
Garry and Pat Ringnald
Mr. Bernard Rink
Gary and Anita Risbridger
Mr. & Mrs. Richard O. Ristine, Jr.
Charles and Donna Ritter
Riverfront Pizza & Specialities
Mrs. Deborah Robbins
John and Lisa Rogers
Mr. and Mrs. E. David Rollert
Mrs. Sarah F. Roloson
Ms. Sharon Roney
Mr. and Mrs. Stephen E. Root
William and Pamela Rosenberg
Mike and Laura Rothermel
Rowe Industries Inc
Mr. and Mrs. Roger W. Rowen
Running Dog Studio
Ms. Ariel Ruth
Mr. Kenneth Ryskamp
Mr. David W. Salisbury
Dr. John R. Sanborn
Mr. and Mrs. Erik E. Saxon
Peter and Jennifer Scanlon
Dr. and Mrs. David A. Scapini
Andy and Susan Schaedel

Contributors (\$100-\$249)

Continued...

Mr. and Mrs. Peter H. Schaff
Mr. and Mrs. John J. Schaffer
Mr. and Mrs. Wendell D. Schaller
Mr. Michael E. Scharpf
Gerald Schatz and Barbara Conley
David and Moira Schedlbauer
Dr. and Mrs. Richard J. Schilling
Mr. and Mrs. Karl Schlabach
Cheryl Schmandt
Mr. Alec Schmid
Mr. Karl Schmid
Folkert Schmidt & Kathleen Sullivan
Kim and Karl Schneider
Mrs. Marilyn M. Schneider
Mark and Susanne Schneider
Michael and Betsy Schneider
Mr. and Mrs. Robert Scholz
Scott D. Schrager & MaryAnne Ford
Jim and Margaret Schrimpf
Mr. Lawrence H. Schultz
Richard and Nancy Schwab
April and James Schwaegerle
Jeffrey and Zane Schwaiger
Frank Sciannella
Mr. and Mrs. John A. Scott
Mr. and Mrs. Jon M. Sebaly*
Susan I. Seger
The Sehnert Family
Jeff and Nita Send
Roy and Marion Severs
Mr. and Mrs. Thomas A. Sexton
Jack Seymour & Margaret Ann Crain
Elise Shatto
Mr. and Mrs. Donald Shaw
Mrs. Margaret Shaw
Mr. and Mrs. Edson P. Sheppard
Mr. and Mrs. John A. Shilts
Robert and Linda Shirkey
Mr. and Mrs. Fred B. Shoaff, III
Mr. John Shoemaker
Mr. and Mrs. Michael Shupert
Carol Shuttleworth & Michael Gavin
Tom and Diane Siebrasse
Mr. and Mrs. Dan Sifferlin
Dr. & Mrs. Daniel Silvasi & Family
Mr. and Mrs. Clint A. Simko
Mr. John Sinclair
Sisson's Main Street Specialties
Mr. James R. Sitko
Paul and Leslie Sizeland
Ted and Sherry Skinner
Ted and Kelly Slater
Mr. and Mrs. John B. Smart
Mr. and Mrs. Dudley B. Smith, III*
Mr. Greg Smith

Mrs. Judith D. Smith
Mr. and Mrs. Larry L. Smith
Mrs. Sharon Smith
Mrs. Betty W. Smykal
Sharon and Robert Snell
Daniel Snyder and Ann Rich
Marcia and Joe Sojkowski
Ms. Sally A. Somsel
Suzanne Sorkin & Eliot Singer
Ms. Christine Sow
Jeffrey and Jenny Spaeth
Gretchen Spreitzer & Robert Schoeni
Brad and Jandy Sprouse
Patrick and Katherine Spyke
Drs. Beverly & R. Lawrence St. Clair
Mr. Dave Stachnik
Fred and Joyce Stackable
Ms. Kristen Staggs
Bob and Laura Stapleton
Mrs. Gloria L. Stapp
Stardust Memorials
William and Adwoa Steel
Dr. and Mrs. Michael G. Steichen
Russ and Anne Steinman
Peter and Joan Steketee
Ms. Catherine W. Stephenson
Dennis Marchese & Cheryl Stereff
Mr. Norman Stewart
Scott and Ann Stewart
Ms. Diana Stover
Mr. Timothy L. Strawbridge
Bill and Gail Strietmann
Dr. and Mrs. Stephen Strobel
Mr. and Mrs. Donald J. Stuhldreher
Lillian and Terry Styx
Dr. and Mrs. Spiridon N. Suci
Sugar Bush Association
Mr. and Mrs. Gregory Suhajda
Bill Sulau & Kay Nolen
Mr. and Mrs. Raymond D. Sullivan
Shannon Sullivan & Thomas Gaffey
Mr. Jerry Sura
Don and Nancy Surber
Mr. and Mrs. Philip Suse
Wayne and Pat Swallow
Mary and Bill Swift
Ms. Nancy A. Swift
Ms. Sarah M. Szymanski
Mr. and Mrs. Stephen Syrjamaki
Stephen and Anne Szymanski
Mr. Erick Takayama
Mrs. Phyllis L. Takayama
Tamarack Gallery
Laurence and Patricia Tarini
Ms. Barbara M. Taylor
Mr. and Mrs. William M. Taylor
Ms. Sara Theisen

Thomas H. Thibault & Ruth Winter
Mr. James Thoburn
Bert and Diane Thomas
Mrs. Susan M. Thomas
Drs. Philip S. Thomas & Henrietta Barnes
Ms. Connie Thompson
Ms. Kate Thornhill
Terry and Shannon Tighe
Timberlee Property Owners, Inc.
Ed and Cindy Timmer
Mr. and Mrs. Steve A. Torok
Mr. George D. Townsend
Leslie and John Treter
The Troy Foundation
Mr. and Mrs. Tom Trumbull
Mr. and Mrs. Dan Tubbs
Robert and Anne Tucker
Daniel and Lisa Turner
Ms. Dori Turner
Dr. and Mrs. Richard F. Tyler
Thomas and Kathryn Tyler
U.S. Bank Foundation
Mr. and Mrs. John Ulrich
Dr. John Ulrich, Ph.D LLC
Mrs. Carole A. Underwood
United Way of Northwest Michigan
Mr. and Mrs. Frans Van Liere
Ms. Susan M. Vanaelst
Rhys VanDemark & Kathi McGookey
Scott and Marie Vander Linde
Doris J. Vander Mey
Mr. and Mrs. Michael A. VanRiper
Dr. and Mrs. James P. Varley
Dr. and Mrs. Samuel Vasiu
Ms. Lois Veenstra
Roger and Norma Verhey
Ms. Mary Ann Victor
Mrs. Sally Viskochil*
Mr. & Mrs. Ralph von Walhausen
William and Pamela Vredevoogd
W.K. Kellogg Foundation
John and Carrie Wadas
Tim and Karen Wade
Mr. and Mrs. Brent Wadsworth
Mr. Jon F. Wadsworth
Ms. Leslie J. Wadsworth
Ms. Kathleen M. Wagner
Peter and Diana Wagner
Mr. and Mrs. John W. Waldrop
David Walker & Maribeth Malecki
Mr. and Mrs. James F. Wall
Mr. and Mrs. Thomas J. Wall
Roger Wallace & Mary Baughman
Ms. Lorri Wallet
Bob and Cyndy Walsh
Marion Stanley and James Walter
Mr. and Mrs. Paul Walter
David and Margaret Walton

Ms. Evie Waltz
Noreen and Stewart Warren
Mr. and Mrs. William J. Warren
Mr. and Mrs. David M. Watt
Price and Jane Watts
Mark and Lisa Weadick
Ms. Mary K. Weadock
Mrs. Alice B. Weaver
Mrs. Doris B. Webb
Lorraine Weber
Ms. Tamara L. Weber
Steve and Nancy Wegienek
Deborah E. Welsh
Mr. and Mrs. Peter F. Westerman
Whaleback Inn
Dennis and Erin Whalen
Mr. Gil Wheeler
Mr. Gilbert H. Whelden, Jr.
Chuck and Janet Whetsel
Laurie and Ryan White
Steve and Amy Whitlatch
Dr. & Mrs. Michael & April Wiater
Mr. and Mrs. Harry L. Wiberg
Ms. Kathleen Wichman
Mr. and Mrs. John Wickland
Ms. Candace Wiebener
John and Kate Wiegand
Michael and Elma Wiener
Ms. Linda Wiersema
Mr. and Mrs. Don G. Wilcox
Mr. and Mrs. Timothy C. Wilcox
Mr. and Mrs. Stephen Wilkerson
Dr. and Dr. Michael A. Willett
David and Roberta Williams
Mr. and Mrs. Dennis M. Williams
Thomas and Sarah Williams
Williams & Bay Pumping Services
Mrs. Bettie Williamson
Ms. Kathryn I. Wilson
Mike and Ruthanne Wilson
Rick and Barb Wilson
Mr. and Mrs. Mark H. Windemuller
David and Christine Winterson
Bill and Rita Witler
Pete and Ginna Woessner
Ms. Susan O. Wold
Dr. Randall Wolthuis
Ms. Shirley J. Woodard
Dick and Jane Woolsey
Mr. and Mrs. John Woomer
Mr. and Mrs. Roger O. Wooton
David and Denise Workum
Mrs. Marilyn Wotring
Curt and Cindy Wright
David D. Wright & Julie Quinn
Jeff Wuepper
Marcy Wydman
Mr. and Mrs. Jeffrey Wyler

2016 Donors

Contributors (\$100-\$249)

Continued...

Jim and Kit Wysor
Denise Wyzwany
Mrs. Agnes L. Yalda
Jeanne Dolson and Michael Yocum
Hanley and Mary-Anne Yoffee
Fred Young and Julie Youmans
Jerry and Barbara Young
Dr. and Mrs Ivars Zadvinskis
Mrs. Ashley Zak
Ms. Karen E. Zerrenner
Robert and Gayle Zimmerman
Mr. John C. Zimmerman
Paul and Imogene Zimmermann
Scot and Elizabeth Zimmerman
Mr. and Mrs. John C. Zink
Dr. Birgit Zipser
Mrs. Mary Ellen Zokas
Bill Zolkowski and Susan Hawley
Barb Zupin and Tom Gardner
Rick and Terry Zweering
Gerard and Barbara Zyren

Supporters (\$60-\$99)

Anonymous (4)

Ken, Cheryl and Zach Adams
Mr. and Mrs. Richard W. Allan
Mr. and Mrs. John D. Allman
Mr. and Mrs. Paul A. Anderson
Peter and Elizabeth Andrews
Adam and Mary Arents
Mr. and Mrs. John Ashman
Mr. and Mrs. Richard Austin
Steve and Jackie Baase
Mr. and Mrs. Gerald G. Battle
Mrs. Rosemary R. Bennett
John and Rebecca Bercini
Mr. and Mrs. Robert H. Birch
Mr. and Mrs. Lowell O. Bird
Jeff and Cindy Black
Mr. and Mrs. Brent Blackwelder
Theron and Cynthia Blakeslee
Mr. and Mrs. James G. Blashill
Mr. and Mrs. Robert Blohm
Ms. Barbara Bloomer
Mr. and Mrs. Timothy Bloomquist
Mr. Charles M. Boesel
Mr. and Mrs. John W. Bogley
Warren and Beverly Boos
Merri Lynn Bouckaert & Paul Peschel
Mr. and Mrs. David Bradshaw
Mrs. Barbara C. Braly
Bright Sky Properties LLC

Jeffrey Brown
Dr. Kersti & Mr. Daniel J. Bruining
Ms. Mary Jo Brumbaugh
Mr. and Mrs. Thomas B. Brush
Mr. J. Richard Burdick
Bill and Janet Burmeister
Mr. and Mrs. Marlin G. Bussey
Bill and Rose Carman
James C. Carpenter & Rebecca Reynolds
Mr. and Mrs. Robert Carroll
Mr. & Mrs. Thomas H. Cartwright
Ms. Jill Case
Mrs. Jean A. Castle
Cathead Point West Association
Mr. Chas Catherman
Gary and Lee Cheadle
Marc and Jenny Chipault
Cincinnati Preserving Company
Jim and Karen Click
Daniel and Linda Cline
Joe and Barbara Coffey
Mr. and Mrs. Robert Cohen
Roberta and Allan Cohen
Mr. & Mrs. Raymond K. Cooper, II
Mr. Thomas W. Crampton
Charles and Susan Crawford
Bret and Molly Crimmins
William and Deborah Dacey
Mrs. Marti Daniel
Ms. Kathryn Danielson
Mr. and Mrs. Howard Datema
Robert and Jacqueline Davidson
Stephen and Consiglia Dawson
Mr. and Mrs. Joseph P. Day
Mrs. Barbara M. Deerpake
Ron and Rebecca Deering
Jamie Derian
Charlie DeSando & Ellen Gilligan
Mr. and Mrs. Mark J. DeVirgilio
Mr. and Mrs. Charles W. Dickerson
Mr. and Mrs. William P. Dillon
Mr. and Mrs. Larry L. Dodd
Dr. and Mrs. Stuart L. Doneson
Mr. and Mrs. Falk Dorn
Mr. Frederick Dose
Barbara and Barry Dove
Ms. Kathy Dowe
Mrs. Nancy D. Downs
Russell Dzuba and Karen Kirt
Mr. & Mrs. Robert C. Edmundson
Ms. Kathy Egan
Ms. Gayle E. Egeler
Mark Eidelson and Caryl Markzon
Alaine Emens and Jackie Fields
Mr. and Mrs. J. Kris Ernst
Ms. Kathleen Evaldson
Mark and Annette Evans
Mr. and Mrs. Peter W. Fabien
Carolyn and Dave Faught
Mr. Robert W. Faull
Mr. John Fletcher
John and Connie Flynn
Mr. and Mrs. Ronald E. Fornowski
Ben and Judy Fowler
Mr. and Mrs. Douglas J. Freeman
Tom and Molly Freeman
Al and Karen Gallup
Jeff and Julie Gerstenberger
Mr. and Mrs. John E. Gideon
Mr. and Mrs. Don B. Gill
Mr. and Mrs. Richard F. Glennon
Mr. and Mrs. Bill Goshorn
Greater Horizons
Mr. and Mrs. Thomas Green
Ken and Joyce Greywall
Thomas and Mary Grimes
Rick and Lynn Grodek
Mr. and Mrs. Berndt H. Gros
Ms. Tracy Halasinski
Mr. David J. Hamilton
Mr. and Mrs. Douglas A. Hansen
Dr. Dick Hasbany
Ms. Gail Hastings
Joel and Mimi Heberlein
Deborah Hecht and Joseph Falik
Mrs. Elisabeth Heikel
Mr. and Mrs. Ward Heine
John D. and Ardis Herrold
Richard and Elizabeth Hill
Mollie Hilliard and Beth Mauldin
Craig and Pat Holmes
Ms. Heather Huffstutler
Mr. and Mrs. James E. Hullverson
Mrs. Alice S. Hunt
Bart and Gail Ingraham
Ms. Annie James
Brent and Debra Jeffers
Ms. Sue Jennings
John E. Johnson
Mr. and Mrs. Allen S. Juris
Ed and Jackie Kagan
Mr. Jonathan Z. Kamholtz
Ms. Angela Kandler
Christopher Kantner & Cynthia Burger
Brian and Mona Kaser
Mrs. Jane Keen
Janet Kelman and David Rein
Edward and Dulce Kiessel
Bob and Karen Kipp
Mr. and Mrs. Russell R. Kirt
Dr. and Mrs. Henry Klugh
Ms. Catherine Kokosinski
Mr. Jason Kolb

Mr. and Mrs. John J. Konkal
Mr. and Mrs. John M. Koval
Gerald and Ruby Kowalski
Ms. Luanne Krantz
Mr. and Mrs. Jon M. Lane
Dick and Susan Lang
Dr. Jeffrey G. Leflein
Mr. and Mrs. William J. LeGray
Mr. David Lerner
Mr. and Mrs. Gene Lewis
Mr. and Mrs. Gerald Lieveois
Ms. Nancy J. Lindeman
Steve and Marcie Lindo
Richard and Nancy Lintner
Ms. A. Catherine Look
Ms. Maxine MacInnis
Mr. and Mrs. E. Thomas Maguire
Mr. and Mrs. Thomas S. Markus
Amy Marowitz & Ronald Kramer
Mrs. Gloria M. McClay
Carl and Virginia McCoy
Jack and Becky McFellin
Michael McManus & Sue Brightheart
David Mertz and April Stuck
Ms. Marcia Metzen
Mr. and Mrs. William J. Miller
Mrs. Patricia Moulton
Susan Muenzer and Craig Nilsson
Pat and Meridith Mulcahy
Mr. and Mrs. Roger L. Mulder
Ms. Susan Murchie
Mr. and Mrs. Richard B. Murray
Ms. Elizabeth R. Neidhardt
Ted and Jennie Nelson
Ms. Cathy Newkirk
John Niles
Denny Nisch
Ms. Majel C. Obata
Mr. and Mrs. James Oliver
Mr. and Mrs. Robert E. Olson
Omena Women's Club
Ms. Anne O'Reilly
Jane and Pat O'Rourke
Mr. Roger Pae
Jann Parsons and Tim Ascroft
Mr. Phillip Peckham
Ms. Bernadette A. Pelland
Mr. and Mrs. William D. Perkins
Ms. Ginny Peters
Mr. and Mrs. Frank Petrock
Steve and Bonnie Plamondon
Mr. Larry Price
Mr. and Mrs. Thomas P. Price
Peg and Don Ramsdell
Mr. and Mrs. Frederick W. Reeves
Thomas and Nancy Reichard
Mrs. Anna Mae Reinhard
Gregory and Brenda Rener

Supporters (\$60-\$99)

Continued...

Mr. and Mrs. Eppa Rixey
Mr. and Mrs. W. Scott Robertson
Mr. and Mrs. Tim C. Rod
John Roh and Susan Bromley-Roh
Mr. Greg Rose
Cindy and Ken Rosiek
Ray and Donna Rosinski
David and Lynn Ruschhaupt
Ms. Sarah Rutherford
Mrs. Rosalind Ryant
Mr. and Mrs. Larry D. Sanford
Mr. Zachary E. Savas
Saving Birds Thru Habitat
Mr. and Mrs. James E. Schlueter
Ms. Hope Schmidt
James Schwantes & Judy Reinhardt
Ms. Barbara A. Schwartz
Mr. and Mrs. Benjamin P. Scott
Rick and Karen Seefelt
Bob and Kris Send
Mr. Michael S. Sherry
Mr. and Mrs. John L. Shoaf
W. Dale Smith
Mr. and Mrs. Ernest H. Smith
Ms. Marjorie Smith
Mr. and Mrs. Mark R. Smith
Randy and Marianne Smith
Richard and Patricia Smith
Ms. Mary Socha
Ms. Elizabeth Sonnega
Mr. and Mrs. Rodney G. Southwell
Jane and Gordon C. Spink
Mr. and Mrs. Donald E. Spinniken
Mrs. Theresa J. StamosUnderwood
Drs. Richard and Linda Stanford
Ken and Bev Stepnitz
Ms. Deborah Stevens
Mrs. Barbara R. Stevenson
David and Toni Stevenson
Ms. Wendy Stock
Todd and Janet Stone
Mr. and Mrs. William B. Strubbe
Ms. Barbara Stuber
Mr. Marvin Studinger
Mr. and Mrs. Thomas Sutter
Mr. Hans Teichman
John and Marcia Teichman
Tim and Trish Thane
The Gunzenhaeuser Family
Mrs. Virginia A. Thompson
Ms. Christine Tiderington
Dennis and Madeline Tomlinson
Andrew and Amy Topper
Mr. and Mrs. Mark Trapchak
Mr. and Mrs. Roger L. Trim
Mr. and Mrs. Gary B. Twomey
John and Marsha Vingsness
Mr. and Mrs. Peter Visser
Mr. and Mrs. Donald F. Wall

Dick and Karen Warren
Ms. Tani Watkins
Mrs. Jeanne M. Watson
Rick and Gail Webster
Russell and Dolores Welchli
Mr. and Mrs. Bruce J. Westover
Ms. Joan Wiesen
William Blair & Company, LLC
Mr. and Mrs. John R. Williams
Williams Chevrolet - Honda
Ken and Brigid Willis
Mr. and Mrs. James D. Wirt
Mrs. Jane Wood
Dr. John R. Woods
Ms. Debbi Workum
Elli A. Workum & Michelle Nader
Laurel Wright & Dan Yannantuono
Ms. Wendy Jo Wyatt
Wendy Wygant & Steven Davis
Miss Jeanie Ziebell
Donald and Beth Ziemann

Subscribers (\$59 and under)

Anonymous (60)
Ernie and Jennifer Abel
Mr. and Mrs. Werner Adamofsky
Mr. and Mrs. David E. Adams
Ms. Ronnie Alff
Sharon and Steve Alguire
Arnold and Terrie Allemang
Mr. and Mrs. George D. Allen
Mr. and Mrs. Mark C. Allen
Diane and Don Allington
Mr. Thomas Almer
Mr. and Mrs. Enoch Anderson
Valerie and Gary Anderson
Jeffrey Anderson & Sandra McArthur
Ms. Linda J. Anderson
Mr. and Mrs. Philip R. Andrus
Mr. and Mrs. Larry L. Andrykovich
Mr. Wayne F. Appleton
David S. Arends
Dr. Edwin A. Arnfield
Mrs. Mary Ann Arvo
Mrs. Gwen Baarstad
Miriam Nancy Taschner Bach
Terrance and Sandra Bacon
Robin and Chris Bahle
Mrs. Marie E. Bahlke
Mr. and Mrs. Forrest D. Baillie
Belinda and Joe Baker
Richard and Dana Balander
Ms. Carol Baldwin
Ms. Sarah Baldwin
Mr. and Mrs. George A. Ball
Gregory and Michele Ballein
Ms. Lynne Barber
Mr. Dave Barbulesco
Mr. and Mrs. James V. Bardenhagen

Ervin and Mildred Bark
Bob and Maryann Barnes
James and Brenda Barnes
Kay and Phil Barrett
Ms. Caroline Barta
Ms. Janet Barta
Mr. and Mrs. Bryan Barus
Jodie Bathish
Werner and Barbara Bauer
Mr. and Mrs. Terry Baumann
Sue and Dan Beardslee
Susan Ann Beebe
Wendy Bell
Mr. and Mrs. William Bellinger
Ms. Audra Bellmore
Ms. Paulina Bendana
Ms. Sue Bennett
Mr. and Mrs. Thomas A. Bennett
Mr. Dan Bennington
Mrs. Joan Bensley
Mr. Kyle Berdeaux Webster
Robin and Mike Bernard
Bill and Carole Betts
Ms. Sandra M. Biagini
Ms. Heidi Biederman
Mr. and Mrs. Kipp Bingham
Greg Binsfeld
Ethel and Keith Birchler
Jeffery and Suzanne Bischoff
David Blackmore & Barbara Worland
Mr. and Mrs. Eric Blakely
Mr. and Mrs. Paul Blakeslee
Ms. Thelma Blanck
Timothy and Kathleen Blomeke
Mr. and Mrs. Joseph Blondia
Mr. and Mrs. Sanford Blumenfeld
Norma and Don Blumenschine
Ms. Tena Bobrin
Mrs. Wilamae Bockstahler
Rick and Kat Bodette
Mr. and Mrs. Milton C. Boesel, Jr.
Tim Boland & Laura Coit
Ms. Luise Bolleber
Mr. and Mrs. John C. Bollman
Ms. Becky Bond
Charles and Janis Bond
Mr. Robert H. Bonner
Mr. and Mrs. Robert K. Bosch
Dan and Sue Boss
Don and Stephen Bott
Mr. and Mrs. Jon R. Boulton
Ms. Mary Bouwkamp
Ms. Ann Bower-Jackson
Mr. John B. Bowers
Caroline, Donna and Curt Braden
Mr. and Mrs. Mark Brant
Roger D. Bratcher
Mr. and Mrs. Terry Breen
Gary and Kim Brehmer

Michael and Joan Brennan
Mr. David L. Brewer
Howard and Mary Bridges
Bill and Pennee Brief
Ms. Eileen Briggs
Mr. and Mrs. Thomas G. Briggs
Mr. and Mrs. Preston Britner
Austin and Lucy Brooks
Carole J. Brown
William and Alta Brown
Dennis and Kay Yoffee Brown
Mr. Michael Brown
Michael and Janice Brown
Mr. and Mrs. Larry Brubaker
Mr. and Mrs. Thomas A. Bruce
Mr. and Mrs. William Brunelle
Joan and Andy Brush
Mr. Jeffrey Buchanan
Mrs. Cheri W. Buchbinder
Mrs. Joan E. Buchman
Carl and Denise Bulat
Mr. and Mrs. George R. Bunn, Jr.
Ms. Emily Burke
Mr. Sam Burks
Ms. Peggy Burman-Lootens
Michael Burnett
Herb and Mickey Burns
Mrs. Donna D. Burr
Brendan Burrows & Ann Derrick
Mr. and Mrs. George Cairns
John and Sherry Calkins
Tim Calkins and Carol Saltoun
Ms. Ellie Canfield
Robert and Danise Cantlon
James and Elisa Cantwil
Eric and Jenny Carpenter
Frank and Donna Carrico
Mr. Jeff Carrico
Paul and Susanne Cartman
Ms. Rosemary Cary
Mr. William J. Casier
Mr. William S. Casier
Jim and Margaret Cavender
Ms. Cisley Celmer
Mr. and Mrs. James L. Centner, Jr.
Martha Chamberlain
Randy and Mari Chamberlain
William Champion & Beverly Pylman
Mr. Clyde P. Chard
Ms. Sally J. Charest
Charles Johnson Family Investment
Jim and Kay Charter
Ms. Sarah Chenault
Mr. & Mrs. Alfred F. Chimoski, Jr.
David and Susan Chrostek
Ms. Deborah Ciavattone

2016 Donors

Subscribers (\$59 & under)

Continued...

Cicccone Vineyard & Winery
 Ms. Kathleen E. Cigan
 Mr. and Mrs. Harold W. Clark
 Michael and Jodi Clay
 Eric and Helen Clemetsen
 Mr. and Mrs. Frank V. Cliff, Jr.
 Gail E. & Steven L. Cobb
 Carey Colburn
 Mrs. Annette Cole
 Ms. Edith A. Cole
 Gigi Collins
 Mr. and Mrs. John Conder
 Ms. Bobbi Connelly
 Mr. Kyle B. Connolly
 Peter and Lauren Connor
 Ms. Laura Conrad
 Ms. Melissa M. Conroy
 Mike and Karen Coquillard
 Ms. Jeanne Corbett
 Julie Cordano
 Peggy Core
 Ms. Carol B. Cottrell
 Mrs. Dorothy J. Coulter
 Mr. and Mrs. Jerome P. Cousino
 Mrs. Lucy M. Couturier
 William and Kristin Crackel
 Carl and Marilyn Creighton
 Ms. Jane Crowner
 Ms. Alexandria Cruz
 Mr. and Mrs. Robert Cullum
 Ms. Marlene Curtiss
 Mr. and Mrs. William G. Cutler
 Romesh and Bernadette Daftary
 Connie Dahm
 Gayle Dalrymple & Carl Ragland
 Richard and Mary Daly
 Michael Danaher
 Mathew and Barbara Dansbury
 Alexandra and Francis Darigan
 Mr. Henry Darlington
 James and Kathleen Datema
 T. Jeff Davis & Ken Smith
 Aaron and Janeene Davis
 Christopher and Diana Davis
 Ms. Marjean W. Davis
 Robin Davis
 Mr. Thomas K. Davis
 Maribeth De Meester
 Joseph and Teresa DeBella
 Mr. Laurence DeBow
 Deb's Hair Designs
 Mr. and Mrs. Cormac B. Delaney
 Ms. Dorothy M. Delehanty

Ms. Christine DeLeon
 Dennis Hurst & Associates
 Mr. and Mrs. John R. DePuy
 Ms. Jeanne M. Deroseau
 Ms. Margaret A. Detrick
 Keith and Sheryl DeVriendt
 Mr. and Mrs. Roland DeYoung
 Mrs. Rita M. Dick
 Mr. and Mrs. John F. DiClemente
 Ms. Caroline Dieterle
 Ms. Valeri Dietz Klein
 Joey and Shelli DiFranco
 Ms. Susan DiFranco
 Richard and Janette Dilley
 Ms. Carolyn Ives Dingman
 Mr. James Disher
 Mr. Joseph E. Dlugopolski
 Mr. Peter E. Doebe
 Robert and Lorli Dolson
 Tim Donaghy and Margy Klesney
 Mr. and Mrs. Andrew Dotterweich
 Ms. Emily Douglas
 Mrs. Janet Dow
 Mr. and Mrs. Brian L. Downs
 Mr. and Mrs. Timothy K. Doyle
 Ms. Mia Drinan
 Ms. Christine Driscoll
 Mr. John Driscoll
 Tim and Pat Duff
 Greg and Mindi Dugard
 Mrs. Bette D. Dugger
 Steve and Wendy Dumas
 Mrs. Lucille C. Dumbrill
 David and Jennifer Dumoulin
 Ms. Carol Dunitz, PhD
 Mr. and Mrs. Edwin R. Dunn
 Andra and Olivia Dupont
 Mr. and Mrs. Tom Durkin
 Graig and Terri Durocher
 Drs. Claire Duvernoy & Frank Bogun
 Ms. Julie Dyson
 Thomas Earwood & Amy Radford
 Mrs. Nancy Eaton
 Terrell and Pat Ebright
 Ms. Marge Eckert
 Paul and Shirley Edmond
 Ms. Janice Edson
 Mr. David W. Egeler
 Joseph and Julie Eickhoff
 Charles and Margaret J. Emery
 Gerri Erickson & Margaret Platner
 Ms. Sally M. Evaldson
 Ms. Anne Evans
 Mr. and Mrs. Christopher Evans
 Rob Stow and Jeremy Evans

Mr. and Mrs. Thomas F. Evans
 Mr. and Mrs. Roger Faber
 Dr. and Mrs. James P. Fadely
 Ms. Margaret Fako
 Ms. Susan Grogan Faller
 Bobbie Falquet
 Mr. Sam Faught
 Mr. and Mrs. Douglas S. Faulkner
 Mrs. Mary C. Fay
 D. Lynn Feeter & Ruth Glaspey
 Richard Feinberg & Robin Verdon
 Ms. Shelley Ferguson
 Mr. Andrew Fessenden
 Warren and Cathy Feyt
 Ms. Stephanie J. Fiebing
 Paul Fields and Deborah Spathelf
 Mr. and Mrs. J. Joseph Fioroni
 Ms. Nancy Firestone
 Ms. Claire Fisher
 Mr. and Mrs. Jay H. Fisher
 Ms. Theresa Fisher
 Dr. James Flaggert
 Mr. and Mrs. Terence R. Flanagan
 Nick and Elaine Fleezanis
 Mr. Martin Fleming
 Mr. and Mrs. James Flore
 Lee and Jill Foerster
 Ms. Phyllis Foley Wanroy
 Food Gatherers
 Bob and Sandra Foote
 Mr. and Mrs. Fred C. Ford
 Tom and Chris Ford
 Ms. Margaret J. Forgione
 Ms. Susan Forintos
 Lynn and Vicki Francis
 Mr. and Mrs. Lynn Frank
 Ron and Pat Franke
 Laura Franseen and Norman Kjome
 Ellen Fred
 Barney and Evelyn Freeman
 Ms. Mary C. Frey
 Mrs. Bercie C. Frohman
 Mr. and Mrs. John Gallagher
 Mr. and Mrs. Brian Gallini
 Mr. and Mrs. Gary J. Gallup
 Mr. Robert G. Gamalski
 Mr. & Mrs. James A. Gardzulis, Jr.
 Mr. Austin Garfield
 Gregory and Amy Garrett
 Mr. and Mrs. Lewis G. Gatch
 Mrs. Jacqueline Gazoul
 Paul and Ruth Geil
 Ms. Florence B. Gerndt
 Alex Gherlan
 Ms. Nancy Gideon
 Michael and Lena Gionnette
 Mr. and Mrs. Lloyd N. Girbach
 George and Pat Giza
 Glazier Persik Beach Association

Mr. Gerald Glencer
 Mr. and Mrs. Charles Godbout
 Mr. Richard Golab
 Mr. and Mrs. Dennis Golec
 Mr. and Mrs. Jay Goodman
 Mr. and Mrs. Helmut P. Goral
 Lisa and Randy Goranson
 Chris and Shannon Gordon
 Ms. Diane E. Gordon
 Ms. Susanne R. Gork
 Ms. Colleen Graber
 Ms. Barbara Graham
 Mr. and Mrs. James R. Grant
 Robert and Lois Grant
 Ms. Diane Grauer
 Great Lakes Sailing Company
 Mr. Kevin Green
 Bridget Greenan & B. Regan Patrick
 Richard and Patricia Greene
 Mr. and Mrs. Edward W. Greeno
 Mr. Jon Gregory
 Ruth and James Grey
 Ms. Katy Griffin
 Mr. and Mrs. Robert C. Grigereit
 Mr. Tom Grogan
 Richard and Ann Grzeskowiak
 Thomas and Victoria Gutowski
 Mr. William E. Habich
 Richard and Barbara Hagan
 Ms. Karen Hague
 Gloria Halligan
 Mr. and Mrs. James A. Ham
 Ms. Krisy Hammond
 Mr. and Mrs. John J. Handloser
 Mr. and Mrs. James A. Hands
 Ms. Gayle Harlow
 Dr. and Mrs. Bruce W. Harlton
 David and Elizabeth Harnadek
 Steven and Susan Hart
 Mr. and Mrs. Michael Hartings
 Cyndie and Jim Hartmann
 Dr. and Mrs. Robert H. Hartwig
 Jim and Bertha Harvey
 Ms. Joanne Hass
 Mrs. Alice J. Hauske
 Mr. Kyle Hayes
 Jack and Suzanne Haynes
 Dennis and Eileen Hays
 Mike and Julie Hays
 Mr. and Mrs. Alfons Heckl
 Mr. and Mrs. Clarence E. Heerema
 Mr. Larry Heibel
 Jim and Jacquie Heidamos
 Paul and Cathy Heidel
 Mr. and Mrs. Conrad F. Heins
 Tom and Beth Hendricks
 Mrs. Jean G. Hengelbrok
 Paul and Meredith Henley

**Subscribers (\$59 & under)
Continued...**

Mr. Joseph W. Heringlake
 Marc and Sarah Hernandez
 Eric and JoAnna Hesse
 John and Linda Hewett
 Linda Hickok
 Judy Hicks & Eric Hespenheide
 Gerald and Lynn Higgs
 Mrs. Barbara Hildner
 Anne and Tony Hill
 Ms. Denise Hinton
 Rudy and Mary Jo Hirt
 Ms. Caroline Hirth
 Lois Hoag
 Ms. Pat Hoekstra
 Judith Hoerner
 Mr. Timothy C. Hoerner
 James and Karla Hoffman
 Carol Holdredge
 Terry and Roberta Hollenbaugh
 Mr. J. Edward Hollender
 Ms. Jane L. Hollon
 Amanda Holmes and Dan Stewart
 Mr. Henry Holt, III
 Mr. Gregory Holwerda
 Ms. Terri Hoog
 Jay and Joan Hook
 Tom and Patty Hopcian
 Bill and Barb Horning
 Mrs. Georgina Hosmer
 Dr. John M. Houk, Jr.
 John and Suzanne Howell
 Ms. Gayla Hoxsie
 Ms. Marge Hoy
 Martin and Sarah Hubbard
 Mrs. Allison G. Hubley-Patterson
 Mrs. Kay B. Hughes
 Ms. Hester A. Hull
 John and Jean Humble
 Mr. John R. Hunter
 Mrs. Mildred Hurley
 Mr. and Mrs. Kenneth P. Hurlin
 Peter Hurlin & Kristin Ellingsen
 Mr. and Mrs. Dennis Hurst
 Dr. Douglas B. Hutchison
 Mike and Carol Hypio
 Ms. Mary Kent Ireland
 Thomas and Lynn Irvine
 Mark and Elaine Michener Israel
 Ms. Dianna Ives
 Joan and Skip Jackson
 Mr. Clifford Jacobs
 Mr. and Mrs. Bruce C. Jacobsen
 Mr. Don Jandernoa
 Mr. and Mrs. Chet Janik
 Paul and Barbara Janowiecki
 Mr. and Mrs. William E. Jansen
 John and Suzanne Jepsen
 Bob and Karen Johnson
 Jennifer Johnstone

Richard Jorgensen
 Greg Jorjorian and Marlys Conrad
 Ms. Sylvia Josephson
 Mr. and Mrs. William C. Joy
 Mr. James E. Joyce
 Joan Kalchik & Michael Tenbrock
 William and Debra Kandler
 Mr. and Mrs. James L. Kareck
 Lowell and Margaret Karinen
 James and Jaqueline Karshner
 Fred Kaynor & Carolin Garvey
 Phillip Keeling and JoAnn Carlson
 John and Lana Keith
 Allison and Alfred Kellogg
 Mrs. Anne W. Kelly
 Barbara Kelly & Daniel Sell
 Mr. and Mrs. Kent B. Kelly
 Mr. and Mrs. Michael J. Kelly
 Mr. Gregory Kenny
 Kentucky Leelanau Corporation
 Jeff and Susan Kessler
 Mr. and Mrs. Rodney Keteyian
 Mr. Wendell Kewitch
 Blake and Lynda Key
 Ms. Lynn B. Key
 Mrs. Adele Kieras
 Mrs. Sarah Kime
 Ms. Beatrice Kimmerly
 Ms. Carol Kindt
 Mr. Donald King
 Kevin and Kimberly Kinnan
 Bill and Maria Kinzie
 Mr. Richard L. Kirby
 Mr. and Mrs. David Kirshenbaum
 Mr. and Mrs. John A. Kish
 Ms. Gina Kittle
 Mr. and Mrs. Thomas A. Klinefelter
 Karen Klix
 Mr. and Mrs. David Knaggs
 Scotty and Sue Knight
 Milton Knight
 Ms. April Kobetz
 Kim and Anne Koehler
 Mr. and Mrs. John G. Koelzer
 Ms. Jenny Koerner
 Ellen Kohler and Matt Cauchy
 Mr. and Mrs. Pete Kohrs
 Ms. Audrey Koloff
 Mr. and Mrs. John Korch
 Ms. Holly Kowalske
 Richard and Alina Krahn
 Mrs. J. Patricia Krajewski
 Mr. and Mrs. John G. Krause
 Laura & Canon Krebehenne
 Mr. Tom Kuieck
 Jan Kyff
 Mr. and Mrs. James LaFave
 Gertrude Laferte
 Ms. Nicole Lafferty
 Brian Lakey & Jennifer Gross

Joe and Lorraine Lamie
 Mr. and Mrs. Bruce Lance
 Mr. Victor Lane
 Lynn Lanese
 Marsha and Martin Langhorst
 Jerald and Beth Laperriere
 Mr. and Mrs. Thomas E. Lauer
 Beth LaValley
 Mr. Bayard F. Lawes
 Mr. and Mrs. Victor B. Lawhead
 Sam and Robin Lawrence
 Mr. Rob Lawson
 Ms. Anne P. Layman
 Jamie and Betty Leanderson
 Rick and Kristi Learman
 Ms. Cheryl Lee
 Ms. Christine Lee
 Mr. and Mrs. George Lee
 Mr. and Mrs. Jeffrey S. Lee
 Jim Lemire & Denise Samuels
 Scott and Jeannine Leslie
 David and Kathy Leugers
 Mr. and Mrs. Alfred J. Levanen
 Level 40 Adventures
 Mr. and Mrs. Sheldon Levin
 Ms. Sura Levine
 Mr. and Mrs. Kevin P. Lewellen
 Mr. Gordon R. Lewis
 Mr. Eric Lezotte
 Lester, Geraldine & James Lichty
 Mrs. Mary Liljeblad
 Carol Lingman
 Art and Mary Link
 Ms. Rose Mary Linzmeyer
 James and Susan Lippert
 Nancy and Victor Lisabeth
 Laurie and Dan Lisuk
 Mrs. Carol M. Liszewski
 Neal Little
 Jenny Littlefield & Peter Wilkinson
 Mr. and Mrs. A. Lynn Livingston
 Bob and Judy Lober
 Mr. Scott Lonoconus
 Mr. Christopher Loper
 Ms. Tamara Lubic
 Pamela S Ludolph, PH.D.
 Ms. Patricia Lukasik
 Ms. Mary C. Lukens
 Ms. Elizabeth Lund
 Ms. Erika Lund
 Dr. and Mrs. John E. Lund
 Ms. Barbara MacInnis
 Macy's Foundation
 Mr. and Mrs. David Magrini
 Jim and Stella Mainero
 Mrs. Angela E. Maleski
 Mr. Mike Malloy
 Ginny Maloney
 Frank and Kathy Maly
 Morgan and Sam Mamudi

Mr. Michael Manick
 Len Mankowski
 Augie, Kim & Kaia Manrique
 Ms. Cheryl Manteuffel
 Mr. and Mrs. Kenneth Marek
 Ms. Susan Kay Maring
 David and Cynthia Marks
 Dr. Sarah Marossy
 Douglas and Gayle Martinelli
 Terry and Barbara P. Marty
 Mr. and Mrs. Douglas G. Mason
 Masterpiece Design Studio Inc.
 Mr. and Mrs. Bill Maul
 Alex and Jane Maximovich
 Ms. Ellen J. Maycock
 Gary and Rebecca McAdam
 Mr. and Mrs. James McAndrews
 Dennis and Sally McCaughan
 Scott and Nancy J. McCloskey
 Mrs. Pauline R. McClure
 Mr. & Mrs. C. Craig McConnell, Jr.
 Steven and Susan McCord
 Ms. Kate McElligatt
 Paul and Susan McEwen
 Mr. and Mrs. William McIlraith
 Mr. and Mrs. John McInnis
 Maggie McInnis and Derek Green
 Murray and Pat McKean
 Sandy and Wayne McKinley
 Mr. and Mrs. P.J. McNamara
 J. Kevin and Kris McSweeney
 Philip and Ann Mease
 Mr. and Mrs. Ken Medaris, Jr.
 Mrs. Marguerite K. Meeker
 Mr. and Mrs. Robert Meldrum
 Ms. Michelle Melis
 Ms. Mary R. Merwin
 Stephen and Ruth Michael
 Ms. Barbara Miles
 Toni Miles
 Vince and Jamie Mileto
 Mr. and Mrs. Larry J. Miller
 Mr. and Mrs. Peter Miller
 Ms. Sharon Miller
 Stefan and Nancy Miller
 Evelyn and Al Millstein
 Ms. Michelle Mirasola
 Ms. Janis Monteith
 Mr. Andrew Moore
 Mr. and Mrs. David B. Moore
 Mr. Dwight B. Moore
 Ms. Mary A. Moore
 Ms. Kristen Moravcik
 Mr. and Mrs. Gerald R. Morawski
 Ms. Amy Morgan
 Ms. Rebecca L. Morris
 James and Paris Morse
 Mrs. Alison Morton

2016 Donors

Subscribers (\$59 & under)

Continued...

Mr. and Mrs. Willard L. Mudget
 Mr. and Mrs. Jeff Mugerian
 Mr. Earl N. Muhleck
 Mr. Glenn Muhr
 Ms. Elizabeth A. Mulcahy
 Bruce and Jane Mulkoff
 James Mumby and Alison Ernst
 Mr. Cliff Murie
 Dr. Annie Murphy
 Mr. and Mrs. Donald H. Myers
 Mr. Jose Navarro
 Mr. and Mrs. Terry Naylor
 Mrs. Susan P. Neill
 Ms. Ginger Nelles
 Sharon and Carol Nelson
 Mr. and Mrs. Larry J. Nelson
 Robert and Chris Newell
 Chuck and Sharon Newman
 Ms. Margaret J. Nichols
 Mr. William Noling
 Mrs. Barbara Norgaard
 Timothy and Holly Norman
 Ms. Barbara J. Nowinski
 Gen Obata and Rebecca Stith
 Patrick and Amy L. O'Brien
 Ms. Elizabeth Och
 Mrs. Nanette O'Connor
 Michael Odren
 Mark and Sara Oetting
 Mr. and Mrs. George Olson
 Ms. Karen Olson
 Kelly and Jeff Orringer
 Ms. Ann Orwin
 Ron and Sue Osgood
 Ms. Margaret A. O'Toole
 Mr. and Mrs. Frederick Overdier
 Mr. Alvin Owsley
 Mr. & Mrs. Christopher C. Painchaud
 Ms. Stephanie Pakula
 John and Leslie Palmer
 Ms. Carol Palms
 Paradesia Association Inc.
 Mr. and Mrs. Stanley J. Pasch
 Ms. Margaret H. Patchin
 Mrs. Sara Pate
 Mr. Dan Patterson
 Mr. Dick Patton
 Mr. Thomas Patton
 Ms. Helen D. Peare
 Mr. and Mrs. William F. Peck
 Lorien Pedenelli
 Terry and Kathleen Pennell

Erin Pennington
 Ms. JoAnna Pepe
 Fred and Nancy Perzanowski
 Dr. and Mrs. Nathaniel A. Peters
 Ms. Anne Petersen
 Mr. and Mrs. Dave Petersen
 Joel and Meggen W. Petersen
 Thomas and Jean Petersen
 Ralph and Dana Pettit
 Mr. Seth Phillips
 Robert and Barbara Pickard
 Ms. Margaret Pierson
 Frank and Sandra Piesko
 Mary and Lowell Plotkin
 Ms. Susan Pocklington
 Darlene Podpolucki & Robert Gross
 Tim and Diane Poff
 Mr. and Mrs. David M. Pohlod
 Ron and Julie Porritt
 Mrs. Elizabeth Porter
 Matthew Posner & Marian Kromkowski
 Ms. Deb Posthumus
 Ms. Julie Povolo
 Mr. and Mrs. Calvin Powell
 Ms. Susan Powell
 Ms. Theresa Premo-Peaphon
 Chris and Kathryn Preston
 Mr. Bill Pritchard
 Mr. Alfred Prizlow
 Cody Proudfoot
 Dr. David L. Pruis
 Michael and Shari Pruis
 Mrs. Marion K. Purdy
 Mr. Bruce Purkiss
 Mrs. Frieda Putnam
 Dr. John Putz
 Mr. and Mrs. Robert W. Quinn
 Mr. and Mrs. Mark Raaymakers
 R. Douglas and Thressa Race
 Nancy Radcliffe
 Curt and JoAnn Rademacher
 Mr. and Mrs. Bruce D. Ragan
 Ms. Etta Rajkovich
 Ms. Kelsey Randall
 Ken and Marcia Ray
 Mr. and Mrs. Larry L. Ray
 Ms. Susan Ray
 John and Ginny Raz
 Paul and Phyllis Rebori
 Mr. and Mrs. David J. Reeves
 Mrs. Regina Regner
 Mr. James N. Reimer
 Edie and Donn Resnick
 Gordon and Nancy Rettie

Mrs. Dianna Reynolds
 Mark and Suzanne Reynolds
 Mrs. Christine E. Rice
 Mr. James L. Richardson
 Ms. Bonnie Ricord
 Larry Risbridger
 Jim Ristine & Mardi Black
 Mrs. Judith A. Ritter
 Mr. and Mrs. James C. Rivers
 Mr. Richard A. Roane
 Ms. Kathleen R. Roberts
 Richard and Nancy Robertson
 Mr. Logan G. Robinson
 Robert and Margaret Robinson
 Ms. Joanne Rochow
 Mr. Michael Roehrig
 Ms. Anne Rogers
 Mike and Julie Rogers
 Dr. and Mrs. Albert D. Rollings
 Mr. Christopher Rood
 Daniel and Janet Rosemergy
 Sarah and Joel Rosenbaum
 Barry and Elyn Rosenthal
 Kay and Pete Rossiter
 Mr. and Mrs. William M. Rouse, Jr.
 Bradley and Kathy Roynon
 Walt and Marj Ruf
 Mr. James E. Ryan, Jr.
 Ms. Elaine Sabady
 Elizabeth A. Sadowski
 Ms. C. Lynn Sagar
 Ms. Jennifer Saguto
 Mary Ann Samyn
 Marshall and Elizabeth Sanders
 Patricia and Victoria Santoriello
 Mr. and Mrs. Joseph D. Sarafa
 Mr. and Mrs. Robert Sawyer
 Mr. Sewall C. Sawyer
 Ms. Jane M. Saxton
 Mrs. Johanna E. Schaefer
 Kent and Maureen Scharff
 Mr. and Mrs. Timothy L. Schaub
 Frederick and Rebecca Scheiber
 George and Judith Schneider
 John and Barb Scholten
 Mr. Russell A. Scholtens
 Mrs. Jeanne L. Schubert
 Mr. and Mrs. James Schultz
 Ms. Sarah Schultz
 Mr. Mark Schumacher
 Mr. Donald Schwendemann
 www.KenScottPhotography.com
 Sandy and Kim Seppala Gyr
 Alice Seppanen
 Linda and Jim Shad
 Stephen Shank and Donna Snyder
 Ms. Margaret Shannon
 Karen Sharkey
 Ms. Lynn Shattuck

Mr. and Mrs. Thomas Shaver
 Guy and Andrea Shaw
 J. Donald and Angela Sheets
 Mrs. Mary A. Shiner
 Carol and Russ Shipley
 Mr. and Mrs. Kent Shoemaker
 Mr. and Mrs. Greg L. Shoff
 Mr. and Mrs. Christopher J. Shook
 Ms. Jean Vilter Short
 Ms. Janet Shroyer
 Mr. and Mrs. James R. Shuster
 Colleen and Bryan Sibthorp
 Mr. and Mrs. Nicholas J. Sica
 Mr. and Mrs. Edward H. Sichler
 Mr. and Mrs. John C. Singleton
 Ms. Jennifer Skripac
 Sleeping Bear Orchards
 Bob and Randi Sloan
 Karyn Smith
 Mrs. Catherine H. Smith
 Jerome and Helen Smith
 Mr. Jon F. Smith
 Ms. Nancy Smith
 Mr. and Mrs. Richard M. Snede
 Mr. and Mrs. Kenneth P. Snodgrass
 Mr. William Somerville
 John and Kristie Sommavilla
 Ms. Holly Sorensen
 Mrs. Mary Spansky
 Mrs. Martha J. Speer
 Brad and Karen Spencer
 Ms. Marion Spencer
 Mr. and Mrs. Josh Sprague
 Mr. and Mrs. Jack St. John
 George and Cynthia Stahl
 Tempie and Ed Stahlin
 Mr. and Mrs. Leo Stallman
 Staman Acres Civic Association
 Ms. Courtney Stankovich
 Ms. Julia Stanton
 Carol Stark
 Ms. Sandra Stayrook
 Mr. David Steel
 Mr. and Mrs. William R. Steel
 Ms. Betty B. Steen
 Mr. and Mrs. Barry Stein
 Mr. and Mrs. Michael Steinberg
 Ms. Joann E. Stepka
 John and Margie Stoller
 Mr. and Mrs. John Storey
 Ms. Carolyn Strand
 Ms. Jenny Strange
 Mr. Thomas Streasick
 Steven and Cynthia Strong
 Dr. Nora Sugintas
 Mr. and Mrs. Jim Sullivan
 Ms. Caitlyn Suse
 Ms. Eileen Suse
 Mrs. Evy K. Sussman

Thanks to you,
generations
of hikers are
enjoying our
newest and
largest natural
area, the
Palmer Woods
Forest Reserve.



Photo: Jim Hewitt

**Subscribers (\$59 & under)
Continued...**

Julie Sutfin and Jan Roddy
Mrs. Ann Sutherland
Lynn Sutton
Mr. Terrence M. Sutton
Suttons Bay Conservation League
Sue and Stefan Svensson
Ms. A. Linnea Swanson
Mr. and Mrs. Daniel D. Sweeney
Al and Mary Beth Swiderski
Ms. Carolyn Swift
David Tabolt & Lisa Genesen
Mr. and Mrs. David Taghon
Peter and Holly Tasker
Ms. Joy M. Taylor
Mrs. Nancy L. Temple
Mac and Marian Tennant
The K Foundation
Ms. Cynthia Theiss
Mr. Bruce C. Thelen
Ms. Sarah Thigpen
Don Thomas & Kathy Vezina
Mr. and Mrs. Jim Thomas
Ms. Melinda Thomas
Mr. Ryan Thomas
Ms. Elizabeth Thompson
Ms. Joyce Thompson
David and Beverly Thrower
Dick and Joyce Tichvon
Annette and Eric Tindall
Edwin S. Tobes & Harriet Bakalar
Ms. Joy Tobin
Ms. Joan Todd
Mr. and Mrs. Alfred Torres
Sonya and Steve Tostige

Daniel Toth and Janice Derian
Ms. Tracy A. Trapp
John D. Tremblay
Doug and Mary Lee Treter
Mr. and Mrs. Roy F. Trifilio
Mr. David Tris
Mr. Joseph Tris
Debra Trowbridge & Sandy Miller
Mr. and Mrs. Ronald W. Tuck
Dr. Frances H. Tully
Ms. Mandi Twining
United Way of Washtenaw County
Mrs. Marion Unwin
Ms. Laurie Van Egeren
Ms. Deborah Van Vechten
Mr. Douglas M. Van Zoeren
Tom and Alice Van Zoeren
Joe VanderMeulen & Bronwyn Jones
Mrs. Deborah Vanlttersum
Mr. and Mrs. John D. Van Raalte
Armen Vartian
Lizabeth Venie & Al Eckerle
Ms. Angela Verbrugge
Jim and Jan Vezina
Mrs. Patricia Vingsness
William and Susan Vogel
Rolf and Mari Von Walhausen
Mr. Joe Walacavage
Ms. Kathryn M. Walker
John Walker
Priscilla Walmsley & Doug Kimble
Ms. Mary Jo Walter
Ms. Joan V. Walters
Ms. Lynne F. Waskin

Ms. Joan Waterbury
Waterford Hills Association
Mr. and Mrs. William Watson
Jim and Sharon Wawrzyniak
Mrs. Barbara G. Weber
Holly and Phil Webster
Mr. and Mrs. James R. Weckenbrock
Mr. Richard A. Wehling
Mark and Lee Weick
Faith Weis & Liz Settoducato
Lois Weiss and Linda Midler
Mr. and Mrs. Tyrus Wessell
Mr. Larry M. West
Jane and David Westerfield
John and Ruth Westol
Mrs. Carol Ann Wetters
Mrs. Susan L. Wheadon
Mrs. Marilyn G. Wheeler
Mr. and Mrs. John W. Whipple
C. Donald and Beverly Whitefoot
Thomas and Cynthia Whitledge
Ms. Marjorie Whitney
Nan and Ron Wick
Stephen F. Wilczewski
Rick Wiles and Maggie Daniels
Ms. Jeanie Williams
Ms. Kathleen R. Williams
Nancy Williams and Mary Hizer
Mr. and Mrs. Philip Williams
Stephen and Sharon Williams
Dr. Donald Willman
Mrs. Ethel M. Wills
Mr. William P. Winslow
John and Connie Wintzinger

Mr. and Mrs. Edward E. Woessner
Jim and Judy Wojciechowski
Denny and Marilyn Wolcott
Ms. Joan A. Wolf
Allen and Janice Wolfe
Mr. Charles Wolterink
Christopher and Sally Wood
Mr. Richard J. Woods
Ms. Kathie Woods
Thomas and Sarah Woods
Matthew and Taya Workum-Byers
Daniel and Margaret Worth
Mr. George Wright
Sara Moorhead and Mary Wulke
Mr. and Mrs. Wayne Wunderlich
Patti Yauck
Mr. and Mrs. Michael W. Yeiser
Young Electric Inc.
Ms. Barbara K. Young-Miller
Philip and Susan Zaborowicz
Mr. and Mrs. Laddie Zalud
Merilyn Ueno and Doug Zernow
Dave and Marcia Zielinski
Miss Katy Zimmerman
Miss Madeline Zimmerman
Mr. and Mrs. Donald L. Zink
Miss Mary Helen Zink
Ms. Carolyn Zinn
Ms. Angela Zonderman
Dutch Zonderman & Bonny Everett
Dr. and Mrs. Robert Zondervan
Ms. Natalie Zoufal
Doug and Pam Zwart

2016 In-Kind Donors

45th Parallel Cafe
Red Path Orchards
American Waste
Amical
Margo and Al Ammons
Anchor Hardware and Gifts
Gary and Christine Armbrecht
Art's Tavern
Mr. and Mrs. Ian Ashken
Bill Bachman
Bahle Farms LLC
Judy and Bruce Balas
Mario Batali
The Bay Theatre
Bayside Gatherings
Maple Achers
Becky Thatcher Gallery
Drs. Lindsay and Mark Bibler
Biggs Construction Service
Black Star Farms
Bluebird of Leland
Blustone Vineyards
Boathouse Vineyards LLC
Steve and Elizabeth Bradbury
Caroline Brady
Brenghman Brothers LLC
Alison Arthur
Haymaker Poultry Co.
Homewaters Real Estate
Rick and Trish Bryan
Marsha and Tom Buehler
Ross Biddiscombe
Theresa's Beauty Salon
Bo Burke Consulting Arborist
Kevin & Barbara Norgaard Byrns
Vintage Views
Perennial Harvest
Cedar Tavern
Chateau Fontaine
Ms. Heather Cook
Paul and Peggy Cova
Scott Craig
Creekside Grains
Bret and Molly Crimmins
Crystal River Outfitters
Mr. Guy Dauderman
Mrs. Treva N. DeJong
Mr. and Mrs. David DesAutels
Joey and Shelli DiFranco
SBD Tours Michigan
Karen Drake and Fern Hawley
Nancy R. and Berkley W. Duck
Dune Grass Designs
Vera Bradley Designs
Empire Outdoors
Epicure Catering

John and Gina Erb
Mr. and Mrs. J. Kris Ernst
Experience Works
Carolyn and Dave Faught
Dennis Ferguson
Fischer's Happy Hour Tavern
Mr. Dave Fisher
Claire Fisher
Nancy Fleming and Bob Smallwood
Forty-Five North Vineyard & Winery
Richard and Barbara Foster
The Front Porch
G.J.'s Rentals
Cheryl Gain and Brian J. Fairbrother
Glen Arbor Art Association
Glen Craft Marina
Shawn Goss
Gourdie-Fraser, Inc.
Grand Bird Books
Grand Traverse Pie Company
Great Lakes Tea and Spice
Grocer's Daughter Chocolate
Charlie Hall
Hansen Foods
Joel and Mimi Heberlein
Hillside Feed and Supply
Mr. and Mrs. Kent N. Holton
Gladys Hoogterp
Hop Lot Brewing Company
Idyll Farms
John and Kathy Imboden
Inland Seas Education Association
Interlochen Center for the Arts
Joe's Friendly Tavern
Great Goods
Ms. Bridgette Jones
Ed and Linda Ketterer
Two Twisted Trees Photography
Knot Just a Bar
L. Mawby Vineyards
Art of Roxane
Lanphier Observatory
Leelanau Cheese Company
Leelanau Coffee Roasting Co.
Leelanau County Sheriff's Dept.
Leelanau Enterprise
Leelanau Pie & Pastry LLC
Leelanau Summer Music Festival
Leland Lodge
Leland Mercantile
Leland Public School
Bay Light Productions
Level 40 Adventures
Light of Day Organic

Manitou Island Transit
Market 22
Barbara Marsh
Geri Mateus Studios
Larry Mawby and Lois Bahle
Seven Points Farm
Michelle's Miracle, Inc.
Michigan Green Safe Products LLC
Mr. and Mrs. Frederick Miller
Allan W. Mitchell
Mimi Mullin
Karen Mulvahill
Annette and Eric Munson
Coco and Roger Newton
Pat Niemisto
Scott and Rachel North
Allen and Ellen Northcutt
Northern Latitudes Distillery
Northwood Home and Gifts
Northwoods Hardware
Hillside Homestead
Susan Oliver
Pennington Collection
Mary Petterson
Christina Pfeufer
Mr. and Mrs. Brian R. Price
Dave and Mary Query
Radius Garden
Joan Gallagher Richmond
Shawn Ricker and Steven Cacossa
Riverfront Pizza & Specialties
The Riverside Inn
Rove Estate - McKenzie Gallagher
Running Dog Studio
Martha's Leelanau Table
Ross and Kerry Satterwhite
Leslie Schmid
Tiffany's Ice Cream & Little Finger Eatery
April Francene Designs
Shady Lane Cellars
Linda and Rob Shirkey
Dr. Lisa H. Siddall
Good Harbor Vineyards
Sisson's Main Street Specialties
My North
Allan and Melissa Smith
Tsonga
Solutions For You, LLC
Leif Sporck - Sporck Tile Art
John and Leslee Spraggins
State Theatre
Steelcase
Cherrie and William Stege
Kathleen Stocking
Suttons Bay Bikes
Tandem Ciders
New Mission Organics

The Cheese Lady
The Redheads
The Tribune Ice Cream & Eatery
Dan and Joanne Tubbs
Joe and Cate Varley
Verterra Winery
VI Grill
Village Press, Inc.
Mayfly Designs, LLC
Megan Smith and Molly Watkins
Sheen's Nature Photography
Wander and Gather
Watkins Furniture
David Watt
Bel Lago Winery
Larry Webb
David Westerfield
Wild Birds Unlimited Traverse City
Justin Winkelman
Zoup!

Event Sponsors

Bahle's of Suttons Bay
Biggs Construction Service
Doty Brown – Riske, Brown and Associates
Chef's Pride Catering
Dr. Stephen E Kozelko DDS
Easling Construction Company
Dr. Russell A. LeBlanc – Community Chiropractic Center
Leelanau Enterprise
Walter and Leslie Schmid
Jack and Susan Seaman
Shugart Builders
Williams and Bay Pumping Services
The Leland Lodge
The Bluebird of Leland

Marketing Agreements

Cherry Republic
Custom Stems
L. Mawby Vineyards
M22 LLC
Stephanie Schlatter Art

We are grateful to all of the federal, state and local elected officials who have supported our work.

Volunteers

(2016 Volunteers)

You Volunteered a Total
of 5,255 hours in 2016.
Amazing! Thank You!

Connie Adamson
Jen Amin
Al Ammons
Dave Amos
Kathy Angus
Christine Armbrecht
Dennis Armbruster
Kim Armbruster
Ed Arnfield
Marlys Bandy
Mike Bandy
Jim Bardenhagen
Jan Bauer
Nancy Beights
Steve Beights
David Bellizi
Jennie Berkson
Blake Bernard
Jack Biggs
Ken Block
Sharon Block
Carol Bowen
Barbara Bowzer
Marsha Buehler
Tom Buehler
Lynn Bugenske
Tim Bugenske
Bo Burke
Joanne Burnam
Cheri Carleton
Jim Carleton
JoAnne Carlson
Kyle Carr
Kathy Cavanaugh
Carol Chambers
Kay Charter
Karen Chase
Beth Chiles
Susan Cocciarelli
Bobbie Collins
Ed Collins
Paula Crimmins
James Deaton
Trevia DeJong
Bill Dennler
Janet Dickerson
Chuck Dickerson
Joey DiFranco
Bette Donahue
Erin Donahue
Molly Donahue
Kelcie Douglas
Barbara Dove
Barry Dove
Nancy Duck
Gretchen Dunfee

Tom Dunfee
Jack Dunn
David Edelstein
Mark Eidelson
Martha Eldridge
Bob Elliott
Gina Erb
John Erb
Betsy Ernst
Kris Ernst
Dave Faught
Will Faught
Susan Fehrenbach
Dennis Ferguson
Erika Ferguson
Dave Fisher
John Fitzpatrick
Barb Foster
Rick Foster
Judy Fowler
Kathy Frerichs
Jane Gale
Rick Gans
Lee Gardner
Chris Garrock
JoAnne Gerben
Missy Getler
Bob Gilbert
Dalia Gilvydis
Matt Gorentz
Jeff Green
Susan Green
John Greene
Tina Greene-Bevington
Deborah Greenman
Don Gregory
Ruth Geil
Ginny Haag
Rick Halbert
Mike Hall
Lynn Hansen
Sherrie Hardie
Anka Harkness
Dan Harkness
James Hart
Nancy Hartings
Chris Hauke
Karl Hausler
Sue Hayes
Judy Hoeffler
Walter Hoegy
Becky Holton
Kent Holton
Rich Hoover
Lauren Hucek
Cindy Hull
John Imboden
Kathy Imboden
Bart Ingraham
Gail Ingraham
Heidi Johnson

Jack Johnson
Julie Johnson
Jennifer Jonhstone
Margie Klesney
Phil Keeling
Dennis Kern
Toni Kern
Ed Ketterer
Paul Kiernan
Jane Kiernan
Alex Klinefelter
Barb Knapp
Demos Kotsanos
Jane Kotsanos
Luanne Krantz
Marion Kromkowski
Greg LaCross
Eric Laitala
Erik Larsen
Monica Larsen
Tom Lauer
Leelanau School
Dana LePoidevin
Philip LePoidevin
Nell Licklider
Judy Livingston
Lynn Livingston
Mary MacDonald
Pat MacDonald
Sam Macksound
Tom Maiolani
Dean Manikas
Al Manson
Sue Manson
Mary Ellen Marik
Caryl Markzon
Barb Marsh
Carl Marsh
Debbie Marsh
Deb Martineau
Steve Martineau
Ann Mason
Dave Mathews
Larry Mawby
Liana May
Halley McDonald
Kate McDonald
Kathy McGuinness
Ann McInnis
Doug McInnis
Cindy Meeker
Peg Meeker
Patricia Melzer
Monna Meyer
Nancy Miller
Sue Miller
Lyn Motlow
Janet Mug
Tom Mug
Andrea Muladore

Mike Muladore
Karen Mulvahill
Annette Munson
Eric Munson
Amy Murphy
Barbara Nelson-Jameson
Bob Newell
Chris Newell
Sue Newman
Ann Nichols
Northport Point Teens
Jim Nugent
Susan Odom
Mike O'Donnell
Susan Oliver
Susie Olsen
Kathryn Omoto
Sharon Oriel
Jane O'Rourke
Jane Packard
Laura Paine
Wes Parker
Lennon Peluso
Dave Peppler
Peg Peppler
Mary Pettersen
Holly Pharmed
Ann Podeszwa
Bobbie Poor
Nancy Popa
Thad Popa
Matt Posner
Susan Price
Brian Price
Linda Proffitt
Bruce Purkiss
Helene Rabinowitz
Ron Rhoades
Kathy Ricord
Lou Ricord
Dick Ristine, Jr.
Ann Rodeck
Cindy Rosiek
Anita Risbridger
Max Rutelnicki
Kerry Satterwhite
Ross Satterwhite
Leslie Schmid
Walter Schmid
Tory Seffren
Kris Send
Claudia Shannahan
Patty Shea
Frank Siepker
Paul Skiem
Judy Smart
Mary Smart
Carol Smith
Marge Snider
Mary Socha

Mina Soutas-Little
Leif Sporck
Gretchen Sprout
Sharon Stein
Tim Stein
Lianne Somerville
Evy Sussman
Ross Sussman
Marnie Sutter
Tom Sutter
Linnea Swanson
Mary Swartz
Al Swiderski
Laura Swire
Amy Tennis
Brian Tennis
Debbie Thero
Bert Thomas
Jim Thomas
Kate Thornhill
Frank Tobin
Mary Tonneberger
Traverse City West Middle
School Greenagers
Mary Tris
Marla Tyler
Trudy Underhill
Alice VanZoeren
Barb Varley
Cate Varley
Joe Varley
Linda Verellen
Katie Whynal
Barb Von Voigtlander
Carrie Wadas
John Wadas
Bruce Wagner
Janet Ward
Yael Warshai
Ann Watkins
Warren Watkins
Larry Webb
Noel Webb
Marcia Webb
Perry Webb
Julie Weeks
Drea Weiner
Chuck Whetsel
Janet Whetsel
Barbara Winkelman
Peter Wolcott
Joanie Woods
Adam Wurm
Jim Wysor
Kit Wysor
Shelley Yeager
Steve Young
Jill Foerster

BOARD OF DIRECTORS

Edward & Barbara Collins
Founders

Warren Watkins, Chairman
Sharon Oriel, President
Ed Ketterer, Vice-President
Julie Weeks, Vice-President
Ross Satterwhite, Treasurer
Karen Mulvahill, Secretary

Christine Ambrecht
David Edelstein
Gina Erb
Bob Gilbert
Don Gregory
Rich Hoover
Greg LaCross
Steve Martineau
Larry Mawby
Roger Newton
Linda Proffitt
Leslie Schmid
Amy Tennis
Barb Von Voigtlander
Bruce Wagner

STAFF

Executive Director
Tom Nelson

Administration
Molly Crimmins

Finance
Kathy Birney

Charitable Giving &
Communications
Betsy LePoidevin
Carolyn Faught
Gayle Egeler
Sara Michael
Leslee Spraggins
Claire Wood

Land Protection
Matt Heiman
Yarrow Brown
Sam Plotkin

Stewardship
Becky Hill
Emily Douglas
Chase Heise

Leelanau Conservancy
105 North First Street
P. O. Box 1007
Leland, MI 49654
231-256-9665
info@leelanauconservancy.org
www.leelanauconservancy.org

Non-Profit
Organization
U.S. Postage
PAID
Leland MI
Permit No. 5

Volunteering: Your Help is SO Important!



Join us for one of the following volunteer events!

Wildflower Rescue Committee Kickoff Meeting
April 20th, 10 am. Munnecke Room, Leland Library

Wildflower Rescue Digs
MWF beginning April 24th, 9:30 am.
Carpool from Village Green

Trails and Restoration Work at Chippewa Run
Friday, April 21st 10 am-noon

**Garlic Mustard Removal—
hand pull this invasive at our natural areas**

Tuesday, April 18th, 10 am-noon at Clay Cliffs

Saturday, April 29th, 10 am-noon at Clay Cliffs

Tuesday, May 9th, 10 am-noon at Lighthouse West

Saturday, May 13th, 10 am-noon at Palmer Woods

Saturday, May 20th, 9 am-noon at Clay Cliffs

Tuesday, May 23rd, 1-3 pm at Clay Cliffs

Tuesday, May 30th, 1-3 pm at Lighthouse West/Leelanau State Park

For more details and to sign up, go to
LeelanauConservancy.org/events/hikes or get in touch with
Claire Wood, Community Engagement Coordinator:
231-256-9665 cwood@leelanauconservancy.org

