



# Leelanau Conservancy

*Conserving the Land, Water and  
Scenic Character of Leelanau County*

2015 Annual Report & Spring 2016 Newsletter

Vol. 27, No. 1



## There's No Place Like Leelanau

In the 1980s, when my husband, Dave, and I were in our 20s and working in Cincinnati, we longed to be in Leelanau. Living from one vacation or holiday weekend to the next, we dreamed always of being here. And so we would think nothing of hopping in the car on a Friday night after work and heading north. We rarely arrived before 2 a.m. at our tiny cottage on Lake Leelanau.



Carolyn's son, Sam, and his girlfriend, Shannon Clay

I remember the sense of well-being that washed over me once we arrived and packing in as much as I could when we were here. Time would fly by. Come Sunday afternoon, I would linger by the lake, as if I could somehow soak up that vista and take it south with me.

Sounds crazy, doesn't it?

But in fact today, my son and his girlfriend do the very same thing. Interestingly, they ended up in Cincinnati too and make the nine-hour drive north every chance they get. They come to ski trails lined with snow-laden hemlocks or to hike up to the spectacular Clay Cliffs overlook. Like we did, they love to swim in Lake Michigan and light bonfires along the shore, with iconic landmarks like Whaleback looming in the distance. I'm so pleased that they love Leelanau as much as we do.

I know that many of you feel the same way because you've told us so over the years. (See examples on pages 19-20) Our shared love for Leelanau is a great uniter. A Conservancy logo on a cap or the shape of the peninsula on a t-shirt can create instant friendships or launch a conversation halfway around the world. That love, when harnessed, can do great things—as you will see in this report.

Thank you for your support, which helped make it all happen. Jump to page 4 for a summary of our year.

—Carolyn Faught, Communications Director

Chairman's  
Message  
p2

Executive Director's  
Message  
p3

2015 Project  
Summary  
p4-9

Conservation by  
the Numbers  
p10-11

Protected  
Lands Map  
p12-13

The Erbs and  
Heritage Society  
p15

Donor Lists  
p16-22

New  
Sustainers  
p22



## Message from our Board Chairman

Change tends to creep up on us slowly. I am reminded of this whenever I try to do something that used to be easy and my body informs me I shouldn't try that again. The same is true with an organization like the Leelanau Conservancy. We age, we grow and all of a sudden, we have different priorities and challenges than we did just a few years ago. As I think about the past year, I am struck by how much our organization has grown and changed in the decade since I first joined the board.

Each year's changes are only incremental: a few more conservation easements, the purchase of development rights on two or three farms, perhaps adding a few acres to an existing natural area. But over time, this all adds up to a lot of responsibility. Closing the year 2015, we hold 161 easements on over 8,000 acres. Each of those easements needs to be monitored annually which means planning, scheduling, hiking and documenting. Some are several hundred acres and others under ten. Each requires significant effort every year, forever.



Warren Watkins, Board Chairman

We now have 25 Natural Areas and Preserves where we build and maintain trails and signage, plow parking lots (sometimes), conduct floristic surveys and manage invasive species.

We are nearing the end of the 5-year strategic plan that has guided the organization through our successful Leelanau Forever campaign and the hiring of a new Executive Director. Our wonderful staff has been one of the hallmarks

of the Leelanau Conservancy for as long as I can remember. This is one more area where we have had some changes in the last year and have hired some really great new people. They are working hard to get to know our properties and our members and are going to be great additions. During the next year, the staff and board will be working to update the strategic plan as we again look forward three to five years. We are in the land protection business, and we always will be, but even if we are able to continue to protect land at the same pace we have over the past 28 years, the stewardship component of land protection will consume an ever increasing share of our time and resources.

As I write this we are within days of completing the purchase of Palmer Woods; with over 700 acres it will be twice the size of our next largest Natural Area. This time, change will not be incremental; Palmer Woods will require equipment and manpower that smaller properties have not needed. We

are working through the plans to bring Palmer Woods into the organization and open its trails to the public while continuing to manage its forest resources. I am confident the acquisition of Palmer Woods will be just the start of another incredible year for the Leelanau Conservancy.

Warren Watkins  
Board Chairman

## Upcoming Events

### Earth Week Activities:

April 18-22, events and times TBA. Watch our website, Facebook, and emails for a plethora of Conservancy events during Earth Week.

**Memorial Weekend Wildflower Rescue Plant Sale:**  
Friday/Saturday May 27-28, 9am-4pm at the Leland Village Green, see page 14 for more information

**Summer Sustainers Gathering:**  
Thursday, July 7, DeYoung Natural Area

**Annual Friends Picnic:**  
Thursday, August 4, Location TBA

**Palmer Woods Dedication:**  
Summer 2016, Date TBA

**Hike Schedule:**  
Our wonderful docents were planning the spring and summer hike schedule as this report went to press. Visit our website to see scheduled hikes and to register. (under the "Hikes and Events" tab)



## Message from our Executive Director

You have a story. You may or may not be a storyteller, but I am certain you have at least one you love to tell. It's your Leelanau Story. It's about how you came to be here. It's about how Leelanau came to occupy a cherished place in your heart. And, it's as much about how Leelanau is on the inside of you as it is on the outside—how you would not be, well, you, without Leelanau.

I understand. I have my own Leelanau Story. By the same token, I have the complete conviction that the reverse is also self-evident: Leelanau would not be Leelanau without you. The simple truth is that we belong to Leelanau as much as she belongs to all of us who love her.

Simply stated, at the Conservancy, we see ourselves as the guardian of your story. It is a role we wholeheartedly accept and take very seriously. We are a sentinel of sorts, watching and working to ensure that your children, grandchildren and future generations have the same profoundly moving experience of seeking, discovering and one day telling their own Leelanau Story. They are sure to be the ones retelling yours, too.



Executive Director Tom Nelson, his wife Stephanie Berger-Nelson, and their daughter, India, enjoy a hike at the Swanson Preserve.

In his Chairman's Message, Warren Watkins has given you a window to the inner workings of the Conservancy. He's touched on the serious, in-depth and ongoing strategic planning to address new challenges that will naturally occur as the Conservancy continues to evolve and as Time impacts

Leelanau. He speaks eloquently of the diligence with which our Staff and Board labor to protect your Leelanau Story and Leelanau County. In other words, if the Conservancy aims to foster excellence in stewarding Leelanau's lands and waters in perpetuity, we too must be excellent stewards of the Leelanau Conservancy itself.

I have been with the Conservancy for 12 years now and

*"The simple truth is that we belong to Leelanau as much as she belongs to all of us who love her."*

have a little over a year under my belt as executive director. I have every intention of a long career at the helm, but I have already begun to think about my role as a thoughtful, engaged but ultimately, temporary, steward of the Conservancy itself. It is a given that the Conservancy must endure far beyond my years here. To me, this means being careful and deliberate about maintaining a highly effective organization to which I will one day bid a fond farewell. After all, the greatest measure of my ability to steward the Conservancy in its role as guardian is how well it thrives once I've stepped down as its executive director. Quite honestly, there must be few things more deeply satisfying than letting go and watching your life's work continue to soar of its own accord.

It goes without saying that planning for success is a complex and continuing task. In doing so, our bedrock principle is that every single relationship matters. We are nothing without the trust of our supporters and this community. Of course, trust is something that must be continually earned. But what is sometimes overlooked is that our persistent effort to expand the depth and breadth of our trusting relationships is transformative in itself. In a word, the broader and deeper the trust and goodwill of the Conservancy is held, the more effective we can be as guardians of your story. And when it comes down to it, it's you and your Leelanau Story that keeps us passionate and motivated every single day to be the thoughtful, careful and highly-effective stewards we aspire to be. Thank you.

Thomas Nelson  
Executive Director



## Palmer Woods: Our Biggest Project EVER

Palmer Woods is a once-in-a-lifetime project to protect one of the largest privately owned tracts of land in Leelanau. It has long been on our wish list of places to protect. When the opportunity arose, however, we were tempted to exercise caution because we had just completed our Leelanau Forever Campaign and were onboarding a new Executive Director. Could we take on this 707-acre, \$4.1 million project? The answer: We must! Our members agreed and nearly 600 families donated to make it happen. Located near Glen Arbor, the Forest Reserve will provide miles of trails for the public to enjoy in all four seasons. It also will allow ecologically sustainable forestry to strengthen a quintessential Leelanau forest. The property stays on the tax rolls and officially became ours in late February. As this report went to press, trails were being marked and plans to welcome the public were well underway.

### Why it matters:

The majority of groundwater that recharges Glen Lake flows from the eastern side of the watershed, where Palmer Woods is located. Protecting this forest protects the water quality of Glen Lake.



## Farmland: 320 Acres Preserved in 2015

Gene and Kathy Garthe's bluff-top farm near Northport was protected with a conservation easement. These 200 acres have been in Gene's family for four generations and are prime for fruit growing, including 26 varieties of apples. Gene's great-grandfather, Steiner Garthe, homesteaded the land in the late 1880s. Steiner was among the first to grow fruit in Leelanau and was known for his experiments and his interest in growing exceptional fruit. Now nearly 150 years later, Gene carries on the tradition of fruit farming, experimentation, and thoughtful land stewardship. In addition to the Garthe project, a 120-acre fruit farm (whose owners wish to remain anonymous), was also protected this year in Suttons Bay Township.

### Why it matters:

Leelanau's hilly terrain surrounded by water creates a unique and globally rare microclimate, ideal for fruit growing, important to our local economy. These two projects add to over 5,000 acres to date that will forever be preserved, maintaining the integrity of our agricultural heritage and keeping our ag economy strong.

## Bass Lake Project Protects Shoreline

This beautiful 89-acre ecological powerhouse near Omena preserves 3,100 feet of undeveloped shoreline, a native hardwood forest, 22 acres of wetland and over 1,000 feet of stream frontage on Belanger Creek. We're grateful to Leona Kalchik for donating a portion of the value of this conservation easement which protects critical fish and wildlife habitat.

### Why it matters:

The property is near other protected lands, (the Mitchell family and Saving Birds Thru Habitat conservation easements) enhancing a natural greenway along the Belanger Creek valley.



## Stewardship: Caring for Protected Lands

Our Stewardship staff had a busy year. They conducted floristic studies at natural areas to help determine best management practices. They walked for miles to document invasive species via GPS (Global Positioning System) and to treat early infestations on the spot. With help from volunteers, they installed signs and benches, spread wood chips and removed truckloads of garlic mustard. They picked up refuse along the Lake Leelanau Narrows, cleared hazard trees from trails after the big storm and added erosion control cutaways on the Whaleback trail. Water quality monitors and coastal monitor volunteers collected dozens of samples and on-the-ground data to help guide our work. When you visit one of our natural areas, and have a great experience, you have Stewardship to thank for it.

### Why it matters:

Protecting land is just the first step. Caring for it in perpetuity, improving habitat, and making our natural areas safe and enjoyable for visitors are all tasks in the ongoing work of stewardship.



## DeYoung Natural Area Expands

One of our most popular natural areas grew by 48 acres with the addition of the Corrigan property which fronts Cherry Bend and Strang Road. (See story on page 9) Also new at DeYoung: We completed a Universal Access Trail which connects the main parking area by the big barn to the fishing and viewing platform on Cedar Lake!

### Why it matters:

Multiple streams and seeps emerge from or pass by the Corrigan property on their way to Cedar Lake. Preserving this land adds to the protection already in place—including three quarters of a mile of Cedar Lake shoreline.

We are thrilled that those in wheelchairs and pushing baby strollers can experience the peace of this mature cedar forest and spend time on the beautiful fishing/viewing platform on the shores of Cedar Lake.





## Omena Woods Association Adds 24 Acres

In 2004 the Conservancy purchased a conservation easement on 110 acres from the Omena Woods Association. The purchase ensured that the threat of development on several ridge top lots visible from M-22, Mougey Lake and Omena Bay is eliminated forever. For everyone who loves to bike or walk Omena Point Road's four-mile loop with its trillium-laden hillside, this was welcome news. This fall an additional 24 acres were protected. The private property features a high quality, mesic northern hardwood forest. It includes diverse native species, trees of many age classes and structural diversity, including a multi-story canopy, standing dead trees and downed logs—all great habitat for wildlife.

### Why it matters:

Permanent protection of this property in its natural and open space condition helps to ensure the quality and quantity of groundwater resources by facilitating natural groundwater recharge for the West Grand Traverse Bay area.



Ken Scott Photography

## Steichen Family Conservation Easement

This natural and undeveloped 13-acre property in Leelanau Township adds to a conservation corridor spanning over 300 acres and is part of the Lake Terrace Coastal Wetlands Watershed. Protection helps to ensure the quality of water resources for Lake Michigan and also provides important upland recharge for the watershed.

### Why it matters:

Located along the M-22 Scenic Heritage Route, the project preserves the view for future generations.



## Echo Valley Sold to Conservation Buyer

One tool in our land protection toolbox is our Conservation Buyer Program, which connects conservation easement sellers with buyers who are interested in purchasing protected property. In some cases, the Leelanau Conservancy will purchase land with important ecological features and hold it until a conservation buyer can be found. The property will then be sold at fair market value with the conservation easement restrictions in place. This is called a Buy, Restrict, Conserve project. A great example is the Echo Valley ecologically rich 40-acre parcel we purchased near Empire, placed a conservation easement on and sold in 2015 to a caring conservation buyer. In the process we recouped some of our costs that have since been funneled into new projects.

### Why it matters:

The land preserves the ridgeline surrounding Big Glen Lake and is part of the Hatlem Creek sub-watershed. The Hatlem Creek area is one of very few places in the state where the endangered Michigan monkey-flower thrives.

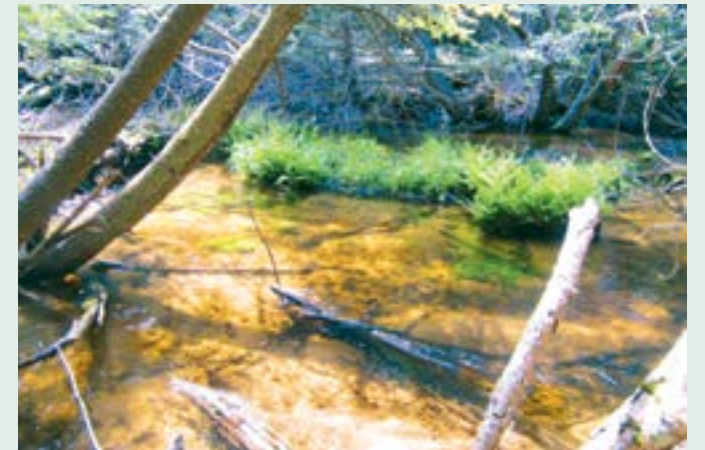


## 30 Acres on Cedar Run Creek Protected

Like Echo Valley (see pg. 6), this project was a buy, restrict, and conserve endeavor. Cedar Run Creek is a primary tributary flowing into South Lake Leelanau. The land features numerous groundwater springs and upland forest with towering hemlock and white pines. "It's a win win," says Matt Heiman, Director of Land Programs. "We protect the conservation values and the new owners have this beautiful, pristine place in which to enjoy nature."

### Why it matters:

1,300 feet of frontage along this beautiful, fragile creek are protected, preventing sediment from disturbing important fish habitat.



## Mebert Creek Preserve: An Ecological Link

2015 saw the protection of an additional 40 acres along Mebert Creek, a cold-water trout stream and important tributary that flows into Lake Leelanau. The new Preserve is sandwiched between two public resources: 100-acre Veronica Valley and Mebert Creek Natural Area (140 acres also protected by the Leelanau Conservancy and transferred to Bingham Twp.). In addition to its environmental qualities, the new Preserve will provide important dry-land access to birders and hunters in the future. Previously there was almost no feasible way to access much of Mebert Creek Natural Area, largely landlocked due to the extremely thick wetland along the lake shore.

### Why it matters:

The new preserve protects 3,000 additional feet along Mebert Creek. Also present on the land are several seeps and springs that trickle in to the stream, as well as groundwater recharge areas that help to filter water entering the lake.



## Volunteers: More Important Than Ever!

We love our volunteers; they have been integral to our success since the Conservancy's founding. Our docents led over 500 people of all ages on hikes through stunning Conservancy natural areas, introducing both new visitors as well as longtime members to the wonders of these places. Meanwhile our Picnic and Auction Committee put on another memorable gathering, raising funds needed to carry out our work. Over 100 people volunteered at the Picnic alone! Outreach volunteers created videos; mailing crews helped to get our newsletters out the door. Palmer Woods' fundraising success could not have happened without many people who hosted gatherings in their homes, inviting friends and neighbors to learn about this fantastic project. Finally, our hard-working Board of Directors spent hundreds of hours doing everything from working at our events to helping to create and update plans and strategies for success.

### Why it matters:

313 volunteers logged 4,747 hours. (See list on pg. 23) Their time and talent saves us thousands of dollars and maximizes the work that our staff is able to accomplish. The value volunteers provide has a huge impact on our budget and our ability to get things done.





## Good Harbor Bay Watershed Protection Plan Completed in 2015!

In Leelanau County we are fortunate to have clean, clear water and we want it to stay that way. One way to ensure that is to have watershed protection plans in place. These plans provide in-depth information about the health of a watershed while also outlining steps to ensure the watershed remains healthy and clean for the future generations. Watershed plans also make stakeholders (such as lake associations, the conservation district, the Conservancy) eligible for funding for various tasks outlined in the watershed plan. Leelanau County has five major watersheds. The completion of the the Good Harbor Bay Watershed Protection Plan (GHBWPP) in 2015 means all five major watersheds in Leelanau County have an approved plan!

The GHBWPP was drafted over many years by a volunteer steering committee, facilitated by the Leelanau Conservancy. The Good Harbor Bay Watershed is located in the middle of Leelanau County. It includes Lime and Little Traverse Lakes and extends into the southern part of Kasson Township (see map). The GHBWPP was submitted to the state of Michigan Department of Environmental Quality (DEQ) in August of 2015. It was approved by the state of Michigan last fall with some minor changes suggested. The plan was then sent on to the Environmental Protection Agency (EPA) for federal approval. Once the EPA review is complete, all the comments and edits will be incorporated into a final plan and available to the general public.

A copy of the plan is available now by calling Yarrow Brown at the Leelanau Conservancy. Members of the GHB steering committee also have copies of the plan as submitted to DEQ.



Completing the Good Harbor Watershed Plan means that stakeholders can apply for funding to help execute the goals of the plan.

The tasks and goals of the GHBWPP can be implemented since the plan is approved on the state level. The steering committee will meet early this summer to celebrate the plan's approval, discuss implementing certain tasks, and explore funding opportunities.

The Leelanau Conservancy will continue to monitor the seven lakes and 15 major tributaries in the watershed through our water quality monitoring program which gathers baseline data (Total Phosphorus, Nitrates/Nitrites, Chlorophyll-a, pH, Temperature, Dissolved Oxygen) four-six times per year. For more information on the water quality program visit [leelanauconservancy.org](http://leelanauconservancy.org).



The Swanson Preserve on Little Traverse Lake lies within the Good Harbor Bay Watershed.

## DeYoung Natural Area Grows by 48 Acres!

Over the last 14 years I've spent a fair amount of time following my co-worker, Matt Heiman, around in the woods. Trying to keep up with him, as he leaps across streams, inches down steep slopes or bushwhacks through a dense thicket can be a challenge. But I'm always grateful to escape my computer and get out onto the land. Furthermore, tapping in to Matt's knowledge of the natural world is, without fail,



Matt Heiman with board member Steve Martineau, touring the new addition to DeYoung.

rejuvenating and inspiring. He inevitably answers the "why" of our work.

The fact that we never get lost is also appreciated. As someone who is easily turned around, I have always been in awe of Matt's and other staffers' ability to disappear into the woods and find their way back out again--a skillset I'm quite sure I will never develop.

And so on a day last May, Matt guided me and a few of our Board members on a tour of the Corrigan property, which the Leelanau Conservancy had purchased some months earlier. The land sits adjacent to the upland portion of our DeYoung Natural Area, and fronts Cherrybend and Strang Roads. At the time, Matt and our Land Protection Committee were trying to decide whether this parcel should be kept and added to DeYoung, or sold with restrictions to a conservation buyer (in order to buffer our existing natural area). In the end, Matt made the case for keeping the land and opening it up to the public.

Here are just a few of the reasons why:

1. "Multiple streams and seeps emerge from or pass by the property on their way to Cedar Lake," says Matt. "Preserving this land ultimately protects the water quality of the lake as well as West Grand Traverse Bay." A rare marl spring is also present on the land.

2. The broad variety of habitat is unusual and hosts an array of wildlife. "You have a diverse young forest, an old agricultural area that has been naturalized, you have thickets and fields and streams, all within 48 acres," says Matt. "As a result, there are upland game birds like grouse and wetland mammals such as otters and mink that go up and down the creeks." The property is part of a wildlife corridor that encompasses Cedar Lake, DeYoung, and private protected lands that eventually connect to the Pere Marquette State Forest.

3. Vegetation along the streams is biologically diverse, and hosts songbirds, amphibians and insects. Black cherry, native red osier dogwood and white pine are plentiful.

Finally, adding these 48 acres to the 145-acre DeYoung Natural Area just makes that place even better for humans and wildlife alike. Located on the outskirts of Traverse City in an area full of rapidly developing dense subdivisions, DeYoung has often been called an oasis and a gateway to Leelanau County's agricultural heritage.

Leaving the Corrigan parcel along Cherrybend Road in its natural state preserves the highway's scenic character and enhances an enormously popular natural area. "Visitors to DeYoung will be able to experience yet another type of terrain and woodland," adds Matt. "Trails and passive recreation are expected to be developed late next year, or early in 2017."

—Carolyn Faught,  
Communications Director



Multiple streams and seeps are present on the land and ultimately flow into nearby Cedar Lake.



## Conservation by the Numbers



**297** plant species were recorded at the 40-acre Hatlem Creek Preserve, an ecological powerhouse that helps to preserve the quality of Glen Lake, including the endangered Michigan Monkey Flower. 231 are native and 66 are non-native. 21 of the non-native taxa are identified as potentially invasive.

**575** people attended our Annual Friends Picnic at Chippewa Run Natural Area, celebrating our love for Leelanau and our work to protect it.



Photo by Cara Lee Paige

**51** hikes were led by our wonderful Docents; over 500 members and guests enjoyed these outings.



Sallie Stanley



**87** new acres were added to 2 natural areas, expanding opportunities for hikers and preserving habitat for flora and fauna.



Eric Munson

**2** farms were permanently protected totaling 320 acres. 4 more farm projects are in the works that would permanently preserve 611 acres. We hope to complete those projects in 2016.



Leelanau Enterprise

**568** families made a gift to help us acquire the new Palmer Woods Forest Reserve. Thank you!

**65** volunteers helped to rescue wildflowers from the paths of bulldozers, digging up thousands of plants that are sold every Memorial Day Weekend on the Leland Village Green.



**170** water samples were collected on 7 lakes and 15 streams over 5 months by 10 volunteers, helping us to assess the state of our water quality.



**4,741** hours were spent by volunteers in 2015, helping with everything from clearing trails to stuffing envelopes and installing benches. We love our Volunteers!



**9,600**

feet of shoreline on lakes and rivers were protected in 2015. Keeping shorelines natural protects wildlife habitat and water quality.



**157** conservation easement properties were monitored on over 8,000 acres for a total of 234 miles walked in 2015. This is an annual task to ensure that terms of the easements are being upheld.



**71** families have joined our Evergreen giving program—making automatic monthly or quarterly donations—saving everyone time, postage and paper.

**85** photos were posted on our Why Leelanau photo blog this year, bringing the total number of images to 1092. See them all at [LeelanauConservancy.org/whyleelanau](http://LeelanauConservancy.org/whyleelanau).



Lisa Meils



**602** is the number of Sustainers who support the Conservancy with an annual gift of \$500 or more, such as Ted and Tali Lanham and Lois Bahle, shown here enjoying our winter sustainers gathering.

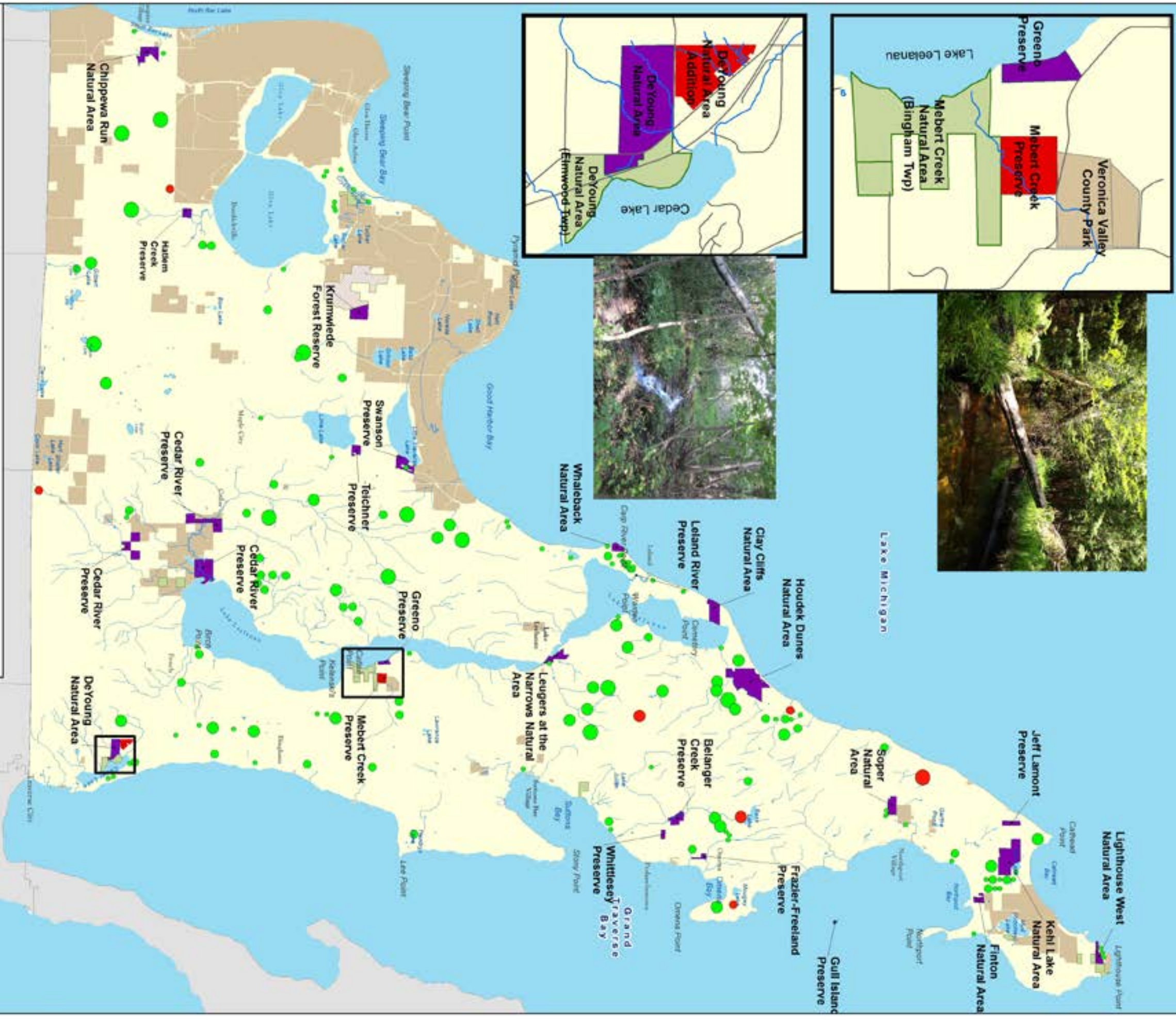
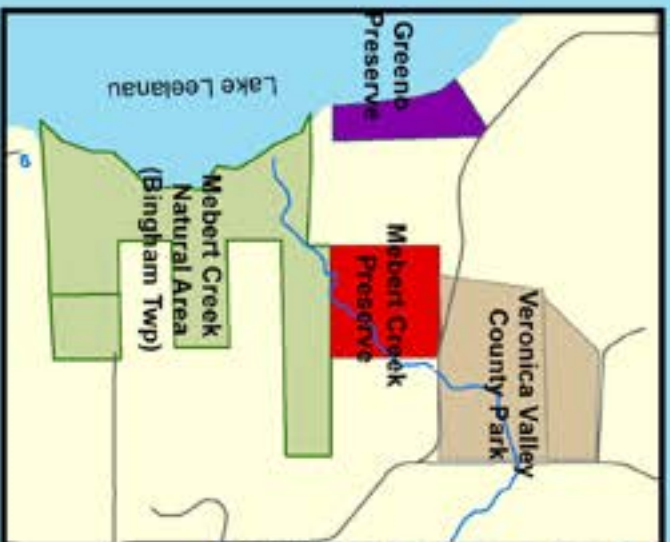
**398** birds were banded at Chippewa Run in ongoing research by Dr. William Scharf and Alice VanZoeren, including the magnolia warbler.



**1,415** acres were surveyed for invasive species by our Stewardship staff, providing valuable information on how best to eradicate them.

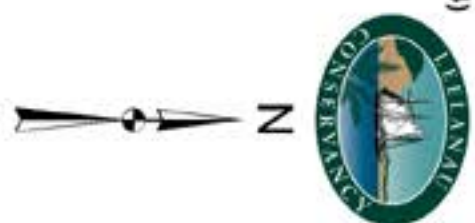


# Leelanau Conservancy Protected Lands as of year end, 2015



- 2015 Private Conservation Easements**
- 25-42 acres
  - 43-120 acres
  - 121-202 acres
- Private Conservation Easements (1989-2014)**
- 0-25 acres
  - 26-70 acres
  - 71-145 acres
  - 146-- 306 acres

- Conservancy Natural Areas, Forest Reserves & Preserves
- Palmer Woods Forest Reserve (acquired February 2016)
- Public Land (state, federal, local)
- Streams
- Lakes



Source:  
Michigan Center for Geographic Information,  
Department of Information Technology  
Leelanau County Planning & Community  
Development Office

Map prepared, February 2016 by:  
Leelanau Conservancy Staff

**Total Protected Land in 2015:**  
603.6 acres

**2015 Conservation Easements:**  
516.6 acres

**2015 Natural Areas and Preserves:**  
87 acres

**Total Stream/Lake Frontage Protected in 2015:**  
7600 feet

**Total Land Protected to date (1988-2015):**  
11,925 acres



## Wildflower Rescue Gears Up!

The wonderful Wildflower Rescue Committee will hold their kickoff meeting on Thursday, April 21st at 1pm in the Munneke Room adjacent to the Leland Library. This group rescues wildflowers from the path of bulldozers and sells them every Memorial Day Weekend on the Village Green. Many of the leftovers are also used in restoration work at our natural areas. If you want to get involved with this great group, plan to come to this meeting. Brian Zimmerman of Four Season Nursery will speak about butterflies and pollinators.

Save these dates too: The first work day for the group will be on Friday, April 22nd at Swanson Preserve, also the home of Wildflower Rescue. The first dig is planned for April 25th. The Annual Plant Sale on the Village Green will be held the Friday and Saturday of Memorial Day Weekend (May 27, 28 from 9 a.m. to 4 p.m. )

The Wildflower Rescue Committee continually seeks new sites on which to dig. If you are building a home, driveway, addition, or know of someone who is, please contact the WRC so they may have a chance to remove these precious wildflowers before the excavators arrive!

Contact Patty Shea: 256-9249 or Joanie Woods: 256-7154.



Barry Dove holds a giant Jack-in-the-pulpit at a Wildflower Rescue dig.

## Doing Our Part for the Monarchs!

Every fall, millions of monarch butterflies migrate from the U.S. and Canada to overwintering areas in Mexico and California and return in the spring. This migration is an amazing natural phenomena that is threatened by habitat loss. We are happy to report that the north garden (Adelia Ball Morris Memorial Garden) of the Leland Village Green was registered by Monarch Watch as an official Monarch Waystation in 2015. Monarch Waystations are places that provide resources necessary for monarchs to reproduce and feed on their migration through North America. The garden is home to four different species of milkweed host plants and seven different species of nectar plants.



Jeremy Wurm

## Tapping into Solar Power

We're excited to report that 28 solar panels were installed on our roof in December. The Conservancy was accepted into the Consumers Energy program Experimental Advanced Renewable Program (EARP) after having applied to the program for many years. EARP provides incentives to customers like the Leelanau Conservancy to increase renewable energy production by installing solar panels.

Under the program, Consumers will pay us a slightly higher rate for the power we generate than they charge for the power we use. That differential, over time, will offset the cost of our panels. "It's a win-win, makes good economic sense and is the right thing to do," says Director Tom Nelson. We're grateful to Ian Olmsted of Peninsula Solar, who helped every step of the way, from applying for permits to helping with the design of our system. "It's great to work with an organization where we have such a similar mindset," says Olmsted. "The goal is to have both a financial and an environmental benefit."

"It has been a long-term goal of the Conservancy's to reduce our reliance on fossil fuels," adds Nelson. "We're happy to do our part to address climate change."



## John and Gina Erb: Making the Case for Planned Giving

John and Gina Erb both grew up as city kids—John in Chicago and Gina in Pittsburgh. They met in college at University of Detroit and although they became avid sailors while living in Chicago, both say that they didn't truly fall in love with nature until they started coming to Leelanau.

John was working as an attorney and Gina as an interior designer in the windy city when they first came north to visit college friends, Jim and Barb Varley. "We didn't have any money," laughs John. "And so when we came up we sponged off the Varleys who were living in a cottage at the Jolli Lodge while Jim was getting his dental practice up and running." One winter weekend, looking for something to do, they saw that the Conservancy was hosting a hike up Pyramid Point to view the winter eclipse.

They signed up and when they arrived, it was snowing hard, and more was forecast. The hike leader, Chad Kahler, asked if the small group wanted to bag it. After all, the eclipse would be obscured by the snow. Everyone was game to go. Chad, a teacher, carried a "ginormous" backpack full of props, including a model of the sun and moon. On later hikes, Gina recalls Chad pulling out a bag of potato chips to teach ways to recognize tree bark or pointing out porcupine droppings at the base of a girdled tree. If they ever were lost and needed to start a fire, Chad said the droppings contained wood that would quickly light.

The night of the snowstorm, Gina says that when they got back to their car, more than a foot of snow had fallen. After digging out, it took an hour to get back to Leland. But they were invigorated, and hooked.

The Erbs eventually bought a place on Gills Pier. Heart problems compelled John to retire early and in 1998 they moved here permanently. With the move, their love for the county only deepened. "Leelanau has incomparable natural resources," says John. "And the people are fascinating, curious and involved. The opportunities to learn here, to contribute are endless. It's a place where you can have a second or third phase of life that's as full—or even more rich, than the life you came from." They began volunteering at our booth, digging wildflowers and attending events. Gina served on our Outreach Committee and continues on the Auction Committee; John served on our Board

of Directors for nine years, the last two as Chairman.

John says that when he started having heart issues he realized that the two things he cared most about were health and the environment. "It was kind of an epiphany to narrow it down and it gave me a focus to say, 'How can I get involved in these two things and make a difference?'" In addition to serving on our Board, John is in his 12th year on the Munson Medical Center Board.

Most recently, the Erbs were asked to serve as ambassadors for our Richard O. Ristine Heritage Society. Members of the Heritage Society (over 140 strong) have made a provision for the Leelanau Conservancy in their will or estate plan.

"We were honored to be asked," says Gina. "We believe in the cause and it is very near and dear to our heart." John agrees.

"The Leelanau Conservancy is a forever organization," he says. "It gives you great confidence when you make a donation whether it's today or a pledge or a planned gift. You know it will be shepherded perfectly and managed in the way you want. You know you can trust this organization to do exactly what is right because it always has. It is the best managed and most trusted organization that I have ever been associated with."

The Erbs have made a significant planned gift and are

excited to help grow the Heritage Society. "Just like us, the world around us has the same frailties," says John. "We need to take care of Leelanau the same way we take care of ourselves. Water doesn't preserve itself; there are so many outside threats. The soil we grow our food in needs to be protected. If we are not vigilant they will be taken away from us."

"We want people to know how easy it is to make a planned gift and how important it is," he adds. "It is a way to support the mission that is absolutely painless." "After all," Gina chimes in, "you can't take it with you!"



Join the Heritage Society  
and help preserve the beauty of Leelanau forever!

To learn more contact:

Leslee Spraggins, Planned Giving Officer,  
at 231-256-9665 or lspraggins@leelanauconservancy.org



GIFTS OF LAND OR DEVELOPMENT RIGHTS

This list recognizes people who have made a gift of land or development rights through an outright gift or bargain sale. Thanks in part to the generosity of these donors, the Leelanau Conservancy can ensure significantly more land and water conservation for every dollar raised. The names below reflect all such donors from the time of our founding in 1988. If you notice an error or omission on this list, please notify us.

Anonymous (7)	Kathy and Gene Garthe	Mr. Kevin Meisel
Horace and Barbara Abbott	Charlotte Giltner and Avery Burns	Mr. and Mrs. G. Robert Miller
Estate of Wayne F. Anderson	Ms. Barbara M. Goodbody	Bernard and Harriet Mitchell
Jeffrey Anderson & Sandi McArthur	Mr. and Mrs. Edward Goss	Mr. and Mrs. Stephen Nance
Andrew V. Kiselius Trust	Mrs. Claudia D. Goudschaal	Coco and Roger Newton
Debra Antzis and Chad Atkins	Mr. and Mrs. John S. Greeno	Mr. Robert A. Nitschke
Luigi Badalamente	Mr. and Mrs. Steven P. Grossnickle	Mr. Glen M. Noonan
Mr. and Mrs. Edmund F. Ball	John D. and Ardis Herrold	Mr. and Mrs. William Olsen
Mr. George A. Ball	John T. and Shirley Hoagland	Mr. Gerald K. Olsen
Peter W. Ball	Mr. and Mrs. Alfred Hoffman	Omena Woods Association
Gary and Christi Bardenhagen	Benjamin F. Hohnke	Mr. and Mrs. Alvin Owsley
Jim and Jan Bardenhagen	Elmer B. Hohnke	Mr. and Mrs. Woodruff Palmer
Robert Bartle	Rose and Stuart Hollander	Dennis Phillips
Richard Benton	Edith M. Holway	Robert and Ellen Pisor
Ms. Karol Berwald	Mr. and Mrs. Bruce Hood	Mrs. Hazel Porter
Ben Bowmaster	Mrs. Jeannette Hunt	Thomas Price and Cynthia Carlson
Mrs. Alexander M. Bracken	Mr. and Mrs. Donald D. Hutchinson	Jean C. Raftshol
David Brigham	Charles and Dorothy Johnson	Lynda Raftshol
Judy Brown	Leona Kalchik	Mr. Curtis Raftshol
Will Case	Mr. F. Randall Karfonta	Mr. Warren Raftshol
Mr. William J. Casier	Jerry and Anna May Kelenske	Bill Rastetter and Cary Weed
Mr. Lowell C. Cate	Mr. James Kimmerly	Mrs. Jean S. Raymond
Jim and Kay Charter	Mr. John Kimmerly	Roy and Ruth Reynolds
Cherry Bay Orchards, Inc.	Mr. Patrick Kimmerly	Bill and Coralyn Riley
Dr. Priscilla Cogan	Ms. Beatrice Kimmerly	Ms. Elizabeth McBride Roberts
Gary A. Cook & Sueann Wood	Mr. and Mrs. Henry B. Kinzie	Mary Ellen Robinson
Mr. and Mrs. James J. Cook	Mr. and Mrs. Eugene L. Klein	Jean M. Sanborn
Ms. Barbara Cruden	Mr. and Mrs. Allen Koehler	Cecily & Kurt Sanford & Family
Mr. and Mrs. Howard M. Dean	Mr. and Mrs. A. Scott Koeze	Mrs. Frances Petty Sargent
Jeannie and Bill Dennler	Mrs. Diana Kohler	Gary Schultheiss & Barbara Richman
Mr. Joseph E. Dlugopolski	Mr. and Mrs. Blaise I. Korson	Mr. and Mrs. D. Martin Scott
Terry Stanton, Trustee Donna C. Stanton Trust	David Krumlauf and Joan D'Argo	Ms. Jean Sedlacek
Ms. Dorothy A. Doten	Robert and Geraldine Krumwiede	Jeff and Nita Send
Ms. Gertrude M. Doyle	Mr. and Mrs. Raymond Kuhn	Mr. and Mrs. Richard R. Seward
Beverly and Jim Duff	Mr. and Mrs. Theodore J. Lanham	Mr. and Mrs. Richard Shuster
Mr. Bruce Viger	Thomas S. Lawton Trust	Dayton and Edith Simmons
Egeler Brothers Farm, LLC	Leland Woods Property Owners Assoc.	Mr. and Mrs. William Slawson
Mr. and Mrs. William L. Elder	Mr. and Mrs. Harrison C. Lingle	Mr. and Mrs. Rossman W. Smith
Scott and Penny Emeott	Mr. and Mrs. Robert H. MacKenzie	Kristine Ball
Mr. and Mrs. Larry Esch	Mr. and Mrs. William F. Marsh	Mrs. Edna Soper
Katherine Fairman and Bill Queen	Mr. and Mrs. John E. Martin	Alan and Nancy Spinniken
Erika and Dennis C. Ferguson	Mr. and Mrs. Van W. Martin	Ms. Juliet Sprouse
Mr. and Mrs. Eben M. Finger	Ms. Lilian P. Mattson	Ann and Chris Stack
Dr. Max and Mrs. Mary Finton	M Lawrence, LLC	Jerry and Peggy Stanek
Mr. and Mrs. Jeffrey E. Fisher	Mr. Charles McBride	Michael and Theresa Steichen
Mr. and Mrs. John W. Fisher	Mr. John McBride	Mr. B. Eugene Strang
Mr. and Mrs. Richard W. Force	Lynn McGovern	Mr. and Mrs. Norman Strunk
Ellen Fred and Bob Martel	Mr. and Mrs. Doug McInnis	Ms. Martha A. Teichner
Mr. and Mrs. Richard M. Gans	Allen and Sandra McSweeney	Mr. and Mrs. Viktor G. Theiss
Mr. and Mrs. James C. Ganter	Franklin B. Mead	Mr. and Mrs. Brian M. Ursu
Mr. and Mrs. William Y. Gard	William Mead	Mr. Douglas M. Van Zoeren

Tom and Alice Van Zoeren
Joe VanderMeulen & Bronwyn Jones
Victoria Creek Farms LLC
Phil and Barb Von Voigtlander
Jayne Leatherman Walker
Mr. Maitland Walker
Ms. Carol L. Waters
Mr. and Mrs. John B. Watkins
Lorraine Weber and Mac Lister
Ben and Cindy Weese
Mrs. Betty L. West
Dr. Mary C. White
Mrs. Howard R. Whitney
Ms. Constance Whittlesey
Dr. and Mrs. Robert L. Willard
Hamilton and Elizabeth Williams
Lucinda K. Willis
Ms. Julie Windham
Nona and Jay Windham
Mr. Norman Wollenweber



A parcel of land on Good Harbor Bay was given to the Leelanau Conservancy by Ann Morris Stack in memory of two extraordinary women: her grandmother called Mommy Me by her grandchildren, and her mother whom everyone called Diggie. Ann's donation supports the Conservancy's ability to continue protecting the lands and waters which make the Leelanau Peninsula uniquely beautiful.

FOUNDERS SOCIETY

The Founders Society recognizes those donors whose generous and long term support has resulted in cumulative lifetime giving of \$25,000 or more to any variety of funds. Please note, the amounts listed do not contain planned gifts such as Charitable Remainder Unitrusts. Many of the individuals listed have also made plans for significant contributions to the Leelanau Conservancy through their estate plans.

\$1 million+
The Carls Foundation
Mr. and Mrs. William L. Fortune, Sr.
Miss Sally Reahard
Chris and Ann Stack

\$500,000 - \$999,999
Anonymous (2)
Mr. and Mrs. Frank A. Bracken
Mrs. Ruth S. Fairchild
Mr. and Mrs. John W. Fisher
George & Mary Ellen Gotshall
Mr. and Mrs. John H. Hoagland
Mr. and Mrs. Eugene C. Miller
Clarence and Ruth Roy

\$250,000 - \$499,999
Anonymous (2)
Mr. and Mrs. Edmund F. Ball
Mario Batali and Susi Cahn
Richard and Carolyn Chormann
Mr. and Mrs. Edward J. Collins
David Edelstein & Jennie Berkson
Edmund F. and Virginia B. Ball Foundation
Mr. and Mrs. William L. Elder
Esperance Family Foundation
Mr. and Mrs. William Y. Gard
George and Frances Ball Foundation
The Herbert H. & Grace A. Dow Foundation
John T. and Shirley Hoagland
Mr. and Mrs. Addison Igleheart
Will and Joan Larson
Mariel Foundation
Dr. and Mrs. Daniel Palmer, MD
Mr. and Mrs. Dudley B. Smith, III
Mr. and Mrs. Warren H. Watkins
Ms. Margaret H. Watkins

\$100,000 - \$249,999
Anonymous (5)
Americana Foundation
Andrew V. Kiselius Trust
David M. and Cara V. Cassard
Cherry Republic
Mr. and Mrs. Howard M. Dean
Mr. and Mrs. Gilbert A. Deibel
Ms. Laura L. Deibel
Francie and John O. Downing
Jeff and Nancy Fisher
Mrs. Sue Frank

Enid and Rick Grauer
Mr. and Mrs. John T. Hackett
Mrs. William B. Hall
Mr. and Mrs. Ronald L. Jones
Lake Leelanau Lake Association
Mr. George Littell, Jr.
Larry Mawby and Lois Bahle
Craig A. and Nancy T. Miller
The Oleson Foundation
Mrs. Rose Oudemolen
Philip S. Harper Foundation
Dr. James Rae & Arleen Rakas-Mitchell Rae
Robert J. Trulaskie Jr. Family Foundation
Ms. Catharine P. Roberts
Mr. and Mrs. Gordon H. Robertson
Rotary Charities of Traverse City
Walter and Leslie Schmid
Mr. and Mrs. Richard Shuster
Ms. Martha A. Teichner
The Brookby Foundation
David and Sally Viskochil
Ms. Karen R. Viskochil
The Wadsworth Family
Andy and Elizabeth Walters
E. Perry and Laurel (Wolfe) Webb
Joan and Randy Woods

\$50,000 - \$99,999
Anonymous (5)
The Ashken Family
Mr. William Bachman
Mrs. Martha B. Baker
Mr. and Mrs. John F. Ball
Mr. and Mrs. Robert Biggs
Mrs. Alexander M. Bracken
Mr. and Mrs. Ronald D. Brooks
Colin Gardner Foundation
Dellora A. & Lester J. Norris Foundation
Jeanne and Bill Dennler
Mrs. Jane W. Domke
Cheryl Donakowski & Frank Misplon
Mr. Martin M. Easling
Mrs. Bowman F. Elder
Gina and John Erb
Mr. and Mrs. John W. Fisher, III
Ms. Julia M. Flowers
Mr. and Mrs. Richard A. Funke
Mr. and Mrs. James C. Ganter
Jan Garfinkle and Mike O'Donnell
Edward Gergosian & Susan Hoekenga

Mr. and Mrs. Robert Goff
Jeff and Susan Green
Mr. and Mrs. Edward A. Ketterer
Mr. and Mrs. William J. Leugers, Jr.
Mr. George H. Littell
Mr. and Mrs. J. Michael Losh
Mrs. Mary E. Lyons
Mahogany Foundation
Mr. and Mrs. Steven Martineau
Mrs. Diantha C. Naftali
Mr. and Mrs. John D. Norris
Mr. and Mrs. Richard D. Oliver
Orion Foundation
Mr. and Mrs. Alvin Owsley
Thomas S. Porter
Porter Family Foundation
Mr. Ralph M. Reahard, Jr.
James and Gwendolyn Rich
The Ricord Family
Mr. and Mrs. Marvin C. Rorick
Mary Alice Schaff
Ms. Anne Schermerhorn
Mr. and Mrs. David T. Shelby
Anne Drackett Thomas
John and Mary Tris
Mr. Robert J. Trulaskie, Jr.
W.K. Kellogg Foundation
Bruce and Betsy Wagner
Ben and Cindy Weese
Mrs. Shirley L. Wheatley
Mr. and Mrs. Harold G. Wilson

\$25,000 - \$49,999
Anonymous (19)
Barbara and Bill Alldredge
Jennifer Baker and Stephen Fishbein
Caroline F. Brady
Broadleaf Foundation
Maureen and Emil Brolick
Richard Cooper & Jan Tennant
Michael and Susan Craig
Mr. Treva N. Dejong
Dole Family Foundation
Tom and Gretchen Dunfee
Joseph Faggan
Feather Foundation
William Fortune, Jr. & Joseph Blakley
Mrs. Lurah Gilbert
Robert H. and Nancy M. Giles
Mr. and Mrs. Norbert W. Gits

Dan and Magee Gordon
Mr. and Mrs. John M. Gordon
The Gordon J. Hammersley Foundation
Grainger Matching Charitable Gifts Program
Don and Ann Gregory
Ms. Ann Hall
The Gordon J. Hammersley Foundation
Molly M. Harrison
Mr. and Mrs. A. Grant Heidrich, III
Omena Fund
Mr. and Mrs. David B. Howard
Mrs. Jeannette Hunt
J A Woolam Foundation
Mr. John Langdon
Jeff Later & Betsy Donahue
Frank and Conchita Lockhart
Mary and Bill Loveless
Dr. R. William Lustig
David and Louise Lutton
M22 LLC
Mrs. John C. Manix
Mr. and Mrs. William F. Marsh
Dr. and Mrs. Robert J. McElroy
Mrs. Gertrude M. Oliver
Dr. and Mr. Nels L. Olson
Mr. and Mrs. Denis B. Pierce
June and Jerry Powley
Jim and Marie Preston
Max R. and Linda J. Proffitt
Bill & Julie Pumphrey
The Paul and Katy Rady Family
Mr. and Mrs. Richard O. Ristine
Chris Rowney and Siobhan Cafferty
Ms. Carolyn T. Russell
Mrs. Frances Petty Sargent
The Shelby Family
Mr. and Mrs. John P. Snedeker
Mrs. Louise Thomas
Tom Russell Charitable Foundation
Anne Miles Vaughan
Mr. and Mrs. Lawrence J. Verdier
Mr. John B. Watkins
Elizabeth Bracken Wiese & Fred Wiese
Robert L. Willard, M.D.
Mrs. Nancy P. Williams
Mr. and Mrs. Peter Wilson
Wayne and Sharon Workman
Michael and Kathleen Wysocki

RICHARD O. RISTINE HERITAGE SOCIETY

The Heritage Society recognizes donors who have shared in the mission of the Leelanau Conservancy by making a gift through a will, bequest, trust, annuity, insurance or other planned or deferred gift. This important group is helping to ensure the long term financial capabilities of the Conservancy. If you would like information about making a planned gift, contact Leslee Spraggins at the Conservancy.

Anonymous (24)	Mr. William S. Casier	Cheryl Donakowski & Frank Misplon
Barbara & William Alldredge	David M. & Cara V. Cassard	Ms. Nancy L. Dotlo
Christie L. & Bruce T. Alton	R. Weston Caughlan	Mrs. Karen Douma
Gary & Christine Ambrecht	Rev. & Mrs. Albert A. Chaffee	Jim & Sharon Doyle
J. Sumner & Irene G. Bagby	William J. Charlesworth	Roland & Diane Drayson
David Bahr	Jim & Kay Charter	Nancy R. & Berkley W. Duck
Mr. & Mrs. Patrick J. Barry, Jr.	John & Linda Cloud	Tom & Gretchen Dunfee
Mr. & Mrs. J. Randall Birndorf	Mr. & Mrs. Edward J. Collins	Jack & Leah Dunn
Dale & Joan Blount	Marie Eleanor Coppa	David Edelstein & Jennie Berkson
Dr. R. John Bull	Mr. & Mrs. John G. Davey	John & Gina Erb
Mrs. Carol P. Burchfield	Mr. & Mrs. Gilbert A. Deibel	Erika & Dennis C. Ferguson
Chuck & Susan Cady	Mrs. Jane W. Domke	EJ & John Fitzpatrick

Courtney M. Font
Mr. & Mrs. Tom H. Fox
Dr. Pam Fraker
James Frederick
Ms. Judy L. Frederick
Bob & Debbie Gilbert
Elizabeth & Richard Gotsch
Enid & Rick Grauer
Jeff & Susan Green
Mr. Richard A. Grout
Ms. Karen Hague
Georgienne Hammer

RICHARD O. RISTINE HERITAGE SOCIETY CONTINUED

Mrs. Jane B. Hancock
Sherrie & Logan Hardie
Mr. William S. Harper
Mrs. C.L. Harrison, III
Mr. William R. Hoff & Dr. Julienne Hoff
Jack D. Hunter
Bart & Gail Ingraham
Kay Johnston & Jeff Sanborn
Bob Jones
Mr. John H. Katt
Mr. & Mrs. Edward A. Ketterer
Mr. & Mrs. Jack A. Krause
Will & Joan Larson
Mr. & Mrs. George I. Liljelblad
Steve & Marcie Lindo
Dr. R. William Lustig
Anne j Marszalek & Leonard P. Marszalek

Mr. & Mrs. Steven Martineau
Larry Mawby
Dan & Susan McDavid
Rob & Anne Meermans
Elizabeth Melkild
Craig A. & Nancy T. Miller
Ms. Mimi Mullin
Karen Mulvahil
Frederick C. Neidhardt
Mrs. Jeanne M. Nielsen
Mr. Lawrence J. Noling
Allen Northcutt
Mr. & Mrs. William D. Peace
Randy Petresh
Ovide & Cindy Pomerleau
Rasa Poorman
Thomas S. Porter

Jim & Marie Preston
Max & Linda Proffitt
Bill & Julie Pumphrey
Jean & David Redfield
Ms. Betty V. Rhoades
Gary Schultheiss & Barbara Richman
Jack & Susan Scaman
Cathy & Paul Sehnert
Mr. & Mrs. David T. Shelby
Ms. Janet Shroyer
Mr. & Mrs. Michael Shupert
Mr. & Mrs. Dudley B. Smith, III
Mr. & Mrs. Timothy J. Stein
Cheryl Stereff & Dennis Marchese
Avery Stier
Dr. & Mrs. Stephen Strobel
Dr. Nora Sugintas

Mr. & Mrs. Ben A. Tefertiller, Jr.
Amy & Brian Tennis
Mr. Terry Terhune
Dana K. Thomas
Mr. & Mrs. Ronald Tonneberger
Barbara W. Vilter
Phil & Barb Von Voigtlander
Bruce & Betsy Wagner
Mr. & Mrs. Warren H. Watkins
Larry & Marcia Webb
Julie R. Weeks
Harry & Susan Wiberg
Elizabeth Bracken Wiese & Fred Wiese
Nancy & Stuart Winston
Ms. Kathie A. Woods



Champion (\$10,000+)

Anonymous (8)  
Aon Foundation  
Jennifer Baker and Stephen Fishbein\*  
Mr. and Mrs. Ronald D. Brooks\*  
The Carls Foundation  
David M. and Cara V. Cassard\*  
Cherry Republic\*  
Richard and Carolyn Chormann\*  
The Columbus Foundation  
Mr. and Mrs. William E. Dean  
Dellora A. & Lester J. Norris Foundation  
Francie and John O. Downing  
David Edelstein & Jennie Berkson\*  
Edmund F. and Virginia B. Ball Foundation  
Esperance Family Foundation\*  
Mrs. Ruth S. Fairchild  
Mr. and Mrs. Jeffrey E. Fisher\*  
Grand Traverse Regional Community Foundation  
John T. and Shirley Hoagland\*  
Ms. Nancy Hoagland\*  
The Homestead  
Rich and Beth Hoover\*  
Mr. and Mrs. Addison Igleheart\*  
J A Woollam Foundation  
Mr. and Mrs. Ronald L. Jones\*  
Carey and Bill Keller  
Mr. and Mrs. Edward A. Ketterer\*  
Will and Joan Larson\*  
Mr. and Mrs. J. Michael Losh  
Anne H. Magoun\*  
Mr. Peter Magoun  
Mariel Foundation  
Larry Mawby and Lois Bahle\*  
Mrs. Diantha C. Naftali  
Jim and Jan Norris\*  
The Oleson Foundation  
Dr. and Mrs. Daniel Palmer, MD\*  
PPG Industries Foundation  
Prologis Foundation  
Bill & Julie Pumphrey\*  
Pyromation  
Kati Rooney & Jim Hennessey\*  
Mr. and Mrs. Ross Satterwhite\*  
Walter and Leslie Schmid\*  
The Brookby Foundation  
Anne Drackett Thomas\*  
Mrs. Sarah Trulaske  
Bruce and Betsy Wagner\*  
Andy and Elizabeth Walters  
Larry and Marcia Webb\*  
Mrs. Shirley L. Wheatley  
Mr. and Mrs. Peter Wilson\*  
Joan and Randy Woods\*

Advocate (\$5,000-\$9,999)

Anonymous (3)  
Barbara and Bill Alldredge\*  
Mr. and Mrs. Charles J. Andrews  
Gary and Christine B. Armbrecht\*  
William and Julie Bachman  
Mr. and Mrs. George E. L. Barbee  
Mr. and Mrs. Emil Brolick\*  
Hy and Nancy Bunn Family\*

Community Foundation for Southeast Michigan  
Community Foundation of New Jersey  
Jeanne and Bill Dennler\*  
Katharine Weston Dexter  
Nancy and James Farese  
Mr. and Mrs. John W. Fisher, III\*  
Ms. Julia M. Flowers\*  
Jan Garfinkle and Mike O'Donnell\*  
The Gosiger Foundation  
Jeff and Susan Green\*  
Don and Ann Gregory\*  
Mr. and Mrs. Peter Haley  
Mrs. Jane G. Haley  
Mr. and Mrs. John R. Haley  
HRD-C Foundation  
Mr. Jack D. Hunter\*  
David and Linda Kaltenbach\*  
Mr. and Mrs. Jonathon M. Lanphier  
Bud and Nancy Liebler\*  
Mr. and Mrs. David S. Lindquist  
Dr. and Mrs. W. Randall Long  
David and Louise Lutton\*  
M22 LLC  
MASCO Corporation  
Patrick McCarthy, MD\*  
Andrew and Janet Miller\*  
Mr. and Mrs. Patrick Miller  
Mr. and Mrs. Richard D. Oliver  
Oliver Family Foundation  
Joshua Pokempner & Gretchen Gardner  
Mr. and Mrs. Max Proffitt\*  
Steelcase Foundation  
Jim and Beth Stephens\*  
Richard and Stacie Stephenson\*  
The Marion and Addison Bartush Fund  
Susan and Viktor Theiss\*  
Toledo Community Foundation  
Tom Russell Charitable Foundation  
John and Mary Tris  
Mrs. Sally Viskochil\*  
Mr. and Mrs. Warren H. Watkins\*  
Elizabeth Bracken Wiese & Fred Wiese\*

Partner (\$2,500-\$4,999)

Anonymous  
Mr. and Mrs. Ian Ashken  
Benevity  
Gershon and Suzanne Berkson\*  
Mr. and Mrs. Robert Biggs\*  
Caroline F. Brady  
Trish and Rick Bryan\*  
Shane and Lee Ann Bullough  
Kyle and Betsy Carr\*  
Dianne Christensen and Roy Christianson  
Mr. and Mrs. Edward J. Collins\*  
Cummings Christensen Family Foundation  
Ms. Lois R. DeBacker  
Mr. and Mrs. Carl M. DeFaria  
Nancy R. and Berkley W. Duck\*  
Gina and John Erb\*  
Ms. Susan J. Finke\*  
Edward Gergosian & Susan Hoekenga\*  
Grainger Matching Charitable Gifts

Program  
Greater Kansas City Community Foundation  
Mr. and Mrs. Edward W. Greeno  
Mr. and Mrs. Steve Grossmann\*  
Curtis Hall and Susan Houseman\*  
Tracy J. Harrison & Victor Peterson\*  
Dr. Jeffrey Johnson  
Mr. Thomas C. Jones\*  
Kresge Foundation  
Stan and Joy Kryder  
Mr. and Mrs. George Littell, Jr.\*  
Mike and Lori Lyman\*  
K. James Yager and Margaret Maier  
Mr. and Mrs. Donald K. Marik\*  
Mr. and Mrs. Steven Martineau\*  
Mr. and Mrs. Stephen J. McShane\*  
Scott and Luvie Myers\*  
The Nancy M. & Victor S. Johnson Jr. Foundation  
Mrs. Lu Rorick\*  
Gary Schultheiss & Barbara Richman\*  
Ms. Patricia Sharpnack\*  
Mr. and Mrs. Thomas M. Shoaff  
Mr. and Mrs. Jeff Shutz  
Paul Skiem and Beth Brooks\*  
Dr. and Mrs. David J. Smith, Jr.\*  
Paul Solli and Kristine Ball\*  
John and Leslee Spraggins\*  
Ms. Joanne L. Sprouse\*  
Ms. Martha A. Teichner  
Mr. and Mrs. G. Neil Tyler  
Mrs. Barbara V. Wilson\*  
John Worst and Ruth Tucker

Benefactor (\$1,000-\$2,499)

Anonymous (2)  
A2M2, LLC  
Porter and Anita Abbott\*  
Dorothy Stites Alig & Will Higgins  
Christie L. and Bruce T. Alton\*  
David and Jacqueline Amos\*  
Mr. and Mrs. Daniel C. Appel\*  
Mrs. Martha B. Baker\*  
Mr. John F. Ball  
Mary Barber\*  
Mr. and Mrs. Christopher Barber  
Mr. and Mrs. Gregory J. Besio\*  
John Bevington & Tina Greene-Bevington  
Troy R. Biddix and Melissa Hill  
Mr. and Mrs. Michael W. Binsfeld  
Jonathan Birge\*  
Blustone Vineyards  
The Boston Foundation  
Kurt M. Bowden & Nancy Dady\*  
Richard and Barbara Bowzer\*  
Alexander and Sally Bracken\*  
Michael and Sherri Brom  
Mr. and Mrs. Peter W. Brooke\*  
Kate Bulkley & Ross Biddiscombe\*  
Frank and Sharon Bustamante  
Chuck and Susan Cady\*  
Mr. Harvey Calcutt  
Mary Beth and Phil Canfield  
John and Anne Chafee

Chemical Bank  
The Chicago Community Trust  
Don and Marylou Coe\*  
Ms. Sterling H. Cole  
Mr. and Mrs. William T. Collins, Jr.\*  
Community Foundation of Louisville  
Dr. and Mrs. Michael W. Craig\*  
Mary Cusick and David Wible\*  
The Dabney & Lavin Family  
Kevin and Elizabeth Garber Daniels\*  
James and Gayle Davis  
The Dayton Foundation  
Gregory and Elizabeth Dechow  
Mrs. Treva N. DeJong\*  
Ron and Marion Dickel  
Mr. and Mrs. Michael L. Dow\*  
Mr. Hank Dow  
Mr. and Mrs. Hayward L. Draper\*  
Mr. and Mrs. Bill Drucker  
Mr. Andrew Duchi  
Mrs. Mary L. Duchi  
Beverly and Jim Duff\*  
Dr. and Mrs. John P. Dunn\*  
Mr. and Mrs. James E. Dutmers, Jr.  
Mr. and Mrs. Roger Edgley\*  
Jack and Karen Elder  
Mrs. Mary Emmett\*  
Bill and Mary Fallon\*  
Larry and Nancy R. Faulman  
Jonathan Feld and Shelley Longmuir\*  
Mr. Eben M. Finger  
Mr. and Mrs. G. Stephen Fisher\*  
Mr. and Mrs. James A. Fisher\*  
Mr. and Mrs. Jerrold M. Fisher  
Mrs. Janice W. Fleming\*  
William Fortune, Jr. & Joseph Blakley\*  
Pamela Fortune\*  
Forty-Five North Vineyard and Winery  
Dr. Pam Fraker\*  
Edmund Frank  
Carl Galeana  
Mr. and Mrs. Andrew Gerben\*  
Jeffrey and Marcia Gibson\*  
Bob and Debbie Gilbert\*  
Robert H. and Nancy M. Giles\*  
Mr. David Giles\*  
Bill and Pat Gillula  
Dr. and Mrs. Robert F. Gleffe  
Ellie Golden\*  
Mr. and Mrs. Philip Goldman  
Dan and Magee Gordon\*  
Mr. and Mrs. Michael Gordon  
Grand Rapids Community Foundation  
Enid and Rick Grauer\*  
The Greater Cincinnati Foundation  
Dick Grout\*  
H. Fort Flowers Foundation  
Mr. and Mrs. Jeff Hamilton\*  
Hansen Foods  
Mr. William S. Harper\*  
Molly M. Harrison\*  
Mr. Kevin Hartwig  
Harvey S. Firestone, Jr. Foundation  
Harvey's Foundation  
Susan and Jack Hayes\*  
Timothy Hefferon and Leeann Konrad\*

Mr. and Mrs. A. Grant Heidrich, III  
David and Betsy Hendricks\*  
Mr. and Mrs. David Herr\*  
Mr. and Mrs. Fred H. Heslop\*  
Drs. John and Judy Hoeffler\*  
Hoogland Family Foundation  
Heather Horton

Gregory and Marcia McMorro  
Mr. and Mrs. Donald Mead\*  
Mrs. Mary Ann Meanwell\*  
Rick and Sally Meese\*  
Craig A. and Nancy T. Miller\*  
Dr. and Mrs. David W. Miller\*  
Mr. and Mrs. G. Robert Miller

*"What do I love about Leelanau? EVERYTHING just about sums it up. My children are the 5th generation to swim in her waters, drink in the clear crisp air, listen to our hearts beat in tandem with the wind through the trees. My soul comes back to life the moment I touch the ground in Leelanau County. IT IS HOME and life is not the same when I am away."* -Elizabeth Lake



Paul Howes and Cynthia Johnson\*  
James and Diana Huckle\*  
Daniel Inman and Catherine Little  
Mark and Andrea Iuppenlatz\*  
Mr. and Mrs. Mike Jacobson\*  
Mr. Daniel L. Johnson, Jr.  
June 8th Foundation, Inc.  
Dr. David Kam\*  
Mr. and Mrs. Jeff Kane\*  
Todd Kennell\*  
Sandra Kilinski and Larry Ganz\*  
Steve and Claudia Klafeta  
Mr. and Mrs. David E. Kleiner\*  
Mrs. Barbara A. Krause\*  
Mr. and Mrs. Jeffrey Kremin\*  
Jeffrey and Jane Krynsinski  
Mr. and Mrs. Arthur J. Kubert\*  
Rob Kurnick  
L. Mawby Vineyards  
Joseph Lada and Gary Cozette\*  
Mr. and Mrs. John A. Laitala\*  
Thomas and Bridget Lamont\*  
Rob and Linda Lanphier  
Mr. and Mrs. Henry Lederman\*  
Dave and Bridget Lemberg  
Dr. Christopher J. Lingle\*  
Mr. Thomas B. Littlewood\*  
Mr. and Mrs. James R. Lockhart\*  
Mr. and Mrs. William Loveless, II\*  
Leon and Pamela Lysaght\*  
Mr. and Mrs. Millard H. Mack\*  
Dale Manty and Elizabeth Tuckermanty  
Ms. Josephine Marquis\*  
Mr. Leonard P. Marszalek\*  
Drs. Ann and Conrad Mason\*  
Bill McCrory & Leslie Maclin\*  
Mr. and Mrs. Randall McElrath  
Mrs. Carol McFadden\*  
Steve McGraw and Bobi Morey\*  
Mr. and Mrs. Clyde E. McKenzie\*

The Minneapolis Foundation  
Nancy and Jim Mogle\*  
Annabel and Robert Moore\*  
Mr. Robert R. Morse, Jr.  
James Musser and Camille Leugers  
Lisa and Ted Neild  
Mr. Lawrence J. Noling\*  
Mr. Frank Noverr\*  
Charles and Connie Olson\*  
Dr. and Mrs. Patrick Oriel\*  
Philip S. Harper Foundation  
Mr. and Mrs. Denis B. Pierce\*  
Mr. and Mrs. Michael Plessner\*  
Mr. and Mrs. Fairfax F. Pollnow  
Mr. and Mrs. John Porritt  
Mr. and Mrs. Robert F. Potvin\*  
Tom and Burma Powell\*  
Kurt and Maria Pregitzer  
Jim and Marie Preston\*  
Mr. and Mrs. George J. Quarderer\*  
Bert and Helene Rabinowitz\*  
Raymond James and Associates, Inc.  
David Reinisch and Julie Kiefer\*  
Renaissance Charitable Foundation  
The Ricord Family\*  
Mrs. Marilyn Rinker  
Mr. and Mrs. John W. Risk\*  
Brenda and Jim Rixey  
Robert W. Baird & Co. Inc.  
Mrs. Paula M. Robertson\*  
Jon and Julianne Robinson  
Mr. and Mrs. Scot C. Roemer\*  
Mr. and Mrs. James R. Scarlett\*  
Jim and Jayne Schafer\*  
Dr. William C. Scharf\*  
David and Lisa Schimmel\*  
Jack and Susan Seaman\*  
Mr. and Mrs. Robert Serbin  
Brian and Sally Shapiro  
Nancy and Tom Shepherd\*

Daniel C. Shoup & Anne Bishop Shoup\*  
Rick and Donna Simonton  
Mr. and Mrs. John B. Smart  
Mr. and Mrs. Allan Smith\*  
Doug and Sally B. Smith\*  
Mr. and Mrs. John P. Snedeker\*  
Jeffrey and Jenny Spaeth  
Mr. David L. Spargo  
Lance and Ania Spitzner  
Mr. Chris Stack, Jr.\*  
Cherrie and William Stege  
Mr. and Mrs. Timothy J. Stein\*  
Jean and Bob Stoessel\*  
Mr. and Mrs. Samuel Stott  
Mr. and Mrs. George Strietmann\*  
Don and Nancy Surber  
Mr. Tom Swift\*  
The Jerry and Marcia Tubergen Foundation  
Tom's Food Market  
Mr. and Mrs. Ronald Tonneberger\*  
Mr. and Mrs. Richard E. Trapp  
Mr. and Mrs. Jerry L. Tubergen\*  
Mr. and Mrs. Timothy J. Unger\*  
Mr. and Mrs. William VanWesten\*  
Mr. and Mrs. Howard Veneklasen  
Beth Verhey and Daniel Toole\*  
Barbara W. Vilter\*  
Ms. Karen R. Viskochil\*  
Tim and Jill Vollbrecht  
Tom and Jenna Warburton  
Julie R. Weeks & Walter Hoegy\*  
Mrs. Elise I. Weisbach\*  
Dr. William W. Wells\*  
Jim and Kathy Westlake\*  
Mr. and Mrs. Tom Wille\*  
Mrs. Nancy P. Williams\*  
Mr. and Mrs. George R. Wills\*  
Mr. Todd Wills  
Terry and Sandy Wilson\*  
Nancy and Stuart Winston\*  
Mrs. Pauline Womac\*  
Wayne and Sharon Workman\*  
Mike and Trish Young  
Daniel and Mary Ziegeler  
Mr. and Mrs. Michael Zipser, Attny/CPA  
Dr. Andris A. Zoltners\*  
David and Kenna Zorn\*

Patron (\$500-\$999)

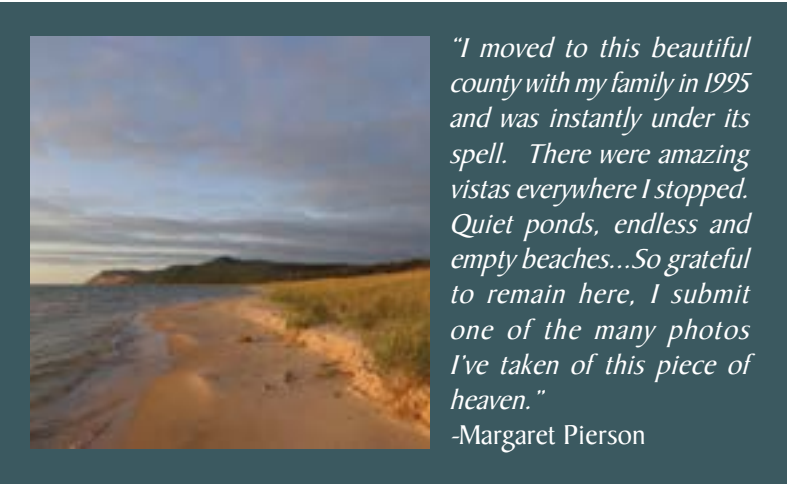
Anonymous (7)  
Barbara Abbott and Larry Hauser\*  
Mark and Connie Adamson\*  
Barry and Lynn Adler  
Susan Ager & Larry Coppard\*  
Ms. Jane Aisenbrey  
Suzanne Albrecht and Steve Redding\*  
Mrs. Mary C. Allen\*  
William and Nancy Allen  
Peter and Vicki Alpaugh\*  
David Alpers  
Barbara J. Ames  
William C. and Vicki Anderson\*  
Mr. and Mrs. Gary E. Anderson\*  
Mr. and Mrs. Thomas R. Angus\*  
Ms. Sally S. Appel\*  
Ms. Phyllis Archambeau  
Ed Arlin and Deb Greenman\*  
Mr. and Mrs. Dennis A. Armbruster\*  
Ms. Jane T. Babbitt  
Irene G. and J. Sumner Bagby  
Bahle Enterprises, Inc.\*  
Randy Baidas and Will Reeves  
Judy and Bruce Balas\*  
Kenneth and Mary Balcom  
Robert & Jeanine Ball\*  
Bank of America Foundation  
Ms. Margaret Barber  
Glenn and Patty Barnes\*  
Susan Bass and Tom Bradford\*  
Rob and Shelly Batterbee  
Roger and Jan Bauer\*  
Ginny and Scott Beall\*  
Ms. Ann Beaujean  
Andre Begosso and Amy Cannon\*  
Nancy and Joe Belton\*  
Mrs. Carol Benner  
Carolyn Doecke Bennett\*  
Jill Berkeley & Larry Goldman\*  
Mr. and Mrs. P. James Bernardo\*  
Drs. Lindsay and Mark Bibler\*  
William Biedenstien & Beverly Hood  
Mr. and Mrs. John B. Biggs, Jr.  
Biggs Construction Service  
David and Chari Binstadt\*  
Edward and Joan Birrell  
Drs. Peter and Eleanor Blitzer\*  
Mr. Brian Blood  
Mr. and Mrs. Robert W. Bloom  
Dr. and Mrs. Dale M. Blount+  
Dr. and Mrs. Harry M. Blount\*  
The Boeing Company  
Mr. and Mrs. Gilbert A. Bogley\*  
Carol and Lee A. Bowen\*  
Bill and Natalie Brown  
Tom and Marsha Buehler\*  
Brig and Merrill Buettner\*  
Mrs. Katharine Bulkley\*  
Dr. R. John Bull\*  
Dr. and Mrs. Ronald Caldwell  
Mr. and Mrs. David Camiener  
Anthony Camill and Ashley Storey\*  
Ms. Deborah Cannella  
Drs. Nancy Cantor & Steven Brechin\*  
Capital Insurance Group  
Ms. Lucille Capra\*  
Mr. and Mrs. Mark Carlson\*  
Ms. Cathryn Carter  
John Chapman and Candance Daley\*  
Karen L. Chase & David Bellizi\*  
Mrs. Betty C. Clarke\*  
Daniel and Linda Cline  
Mike and Tedi Collier\*  
Mr. Dennis R. Colling  
Michael Collins and Margaret Grano  
Michael and Michelle Connell\*  
Richard Cooper & Jan Tennant\*  
Cheryl Cooper  
Mr. and Mrs. James Cooper  
Marie Eleanor Coppa\*  
Greg and Helen Cosma  
Molly and John Crabb



Patron (\$500-\$999) Cont.  
Dr. and Mrs. Richard Craig William and Patricia Crean  
Ron and Peggy Creten  
Dr. and Mrs. Keith L. Curtis\*  
Mr. Jay Dankovich\*  
Mr. and Mrs. Daniel W. Darland\*  
Judy Darst  
Drs. Paul Dechow & Joanne Blum\*  
Mr. and Mrs. Daniel J. Devine\*  
Mr. and Mrs. Thomas Dickinson\*  
Adele and Page Dinsmore\*  
Mr. and Mrs. Jeffrey E. Dixon\*  
Conrad and Judith Donakowski\*  
Mr. and Mrs. Philip A. Donatelli  
Mrs. Karen Douma\*  
Roland and Diane Drayson\*  
Mr. and Mrs. Gary P. Drew\*  
William Drozdalski & Linda Janman\*  
Harry and Beth Drucker\*  
Ms. Sally Drucker  
Tom and Gretchen Dunfee\*  
Harriet Dunlop\*  
Mr. and Mrs. John R. Dye\*  
Easling Construction Company  
East Lansing Garden Club  
Ms. Sherry D. Edwards\*  
Aaron and Jennifer Ellenbogen\*  
Mr. and Mrs. Robert Elliott\*  
J. Richard Emens & Beatrice E. Wolper\*  
Emerson  
Mr. and Mrs. Vincent Engerer\*  
Joe and Dawn Erhardt\*  
Rob Evans and Adria Badagnani  
Robert and Barbara Featherly\*  
Dr. and Mrs. Robert E. Fellows\*  
Erika and Dennis C. Ferguson\*  
Mr. Buzz Finke  
Mr. and Mrs. Paul J. Finnegan\*  
Mark and Betsy Fisher\*  
Mr. and Mrs. John Fitzpatrick\*  
Mr. and Mrs. Michael Fleishman\*  
Robert and Gloria Floden\*  
Kenneth Floody & Elizabeth Freebairn  
Matt and Courtney M. Font\*  
James and Kathryn Fonte\*  
Mary L. Forster, M.D.\*  
Dr. and Mrs. Richard K. Foster\*  
Drs. Robert Foster & Valarie Miner\*  
Mr. and Mrs. Thomas H. Fox\*  
Mr. James W. Frederick\*  
Mrs. Ruth M. French\*  
David Friar and Rorie Lewis\*  
Jim and Sally Friend\*  
Mrs. Margot S. Funke\*  
Ms. Carol Fus  
Nancy Gallagher & Kevin Weber\*  
Drs. Marc and Linda Gallini\*  
James and Kathy Ganley\*  
Mr. and Mrs. Richard M. Gans\*  
Mr. and Mrs. Lee H. Gardner\*  
Ms. Judith E. Gass\*  
William and Bertha Gebo\*  
Mr. Paul Gerhart\*  
Sandra Gianturco & William Bradley\*  
Jeffrey and Georgia Gietzen\*

Mr. James C. Gilbo\*  
Steve Gilbreath\*  
Mrs. Janet E. Goettle\*  
Michael Goodell and Mary Northcutt  
Dr. and Mrs. David Gordon\*  
Ms. Maria Gotsch  
Mrs. Elizabeth W. Gotsch  
Dr. and Mrs. Richard A. Green  
Mr. and Mrs. John S. Greeno  
Jerry Gretzinger & Meg Staley\*  
Michael Grover and Nunzio Lupo\*  
Mr. and Mrs. James Groves  
GTRCF - The Rotary Endowment Fund  
Mr. Forrest Gunderson\*  
Mr. and Mrs. Christopher Haber  
Bruce and Cynthia Hagen\*  
Mr. Robert L. Hagerman\*  
Mr. and Mrs. Rick Halbert\*  
Mr. Charlie N. Hall\*  
Mollie and Chuck Hall\*  
Mrs. Barbara B. Hall  
Mr. Michael W. Hall  
Jeff and Ilze Hammersley\*  
Pat and Linda Hanniford  
Mr. and Mrs. Edward C. Hanpeter\*  
Ms. Dorothy Hanpeter\*  
Mr. Paul Hanpeter\*  
Mr. and Mrs. Alan E. Hartwick\*  
Judith Case & Karl Hausler\*  
William and Sarah Heaton  
Lynn and Diane Hedeman\*  
Ms. Jeanine Heibel  
Bev and Dan Heinz  
Mr. Matthew Heiss  
Ms. Mary Helmick\*  
Gail and Bob Hetler\*  
Mrs. Kristi Heuvelman  
Mr. and Mrs. Thomas Hiatt  
Frederick and Judith Hill\*  
Mr. and Mrs. Robert L. Hinkle  
William and Suzanne Hoff\*  
Mrs. Nancy Hollowell\*  
Mr. and Mrs. Kent N. Holton\*  
Thomas Hooker and Kristen Rabe  
Mr. John H. Hoppin, Jr.\*  
Michael Huey and Christian Witt-Dorring  
Mrs. Ann Huffman\*  
Mr. and Mrs. Charles J. Hurbis\*  
John and Kathleen Imboden\*  
T. Michael and Joan Jackson\*  
Steve and Maggie Jackson  
Mr. and Mrs. John Jahoda\*  
Susan and Jerry Janecke  
Mr. and Mrs. Kalin S. Johnson\*  
Geoff and Deborah Kammerer  
Mr. and Mrs. Michael Kaplowitz  
Michael Kaselnak & Michelle Taylor\*  
Alan and Teri Kasper\*  
Mr. and Mrs. Mike Keen\*  
Mrs. Janet H. Kelley  
Jamie and Polly Jo Kemler\*  
James and Bertha Kemper\*  
Ms. Susan Kettering\*  
Mr. and Mrs. John J. Kinsella  
Mr. and Mrs. Steven Klein\*

Mr. Charles Knapp\*  
Mr. and Mrs. Thomas Knighton\*  
Dick and Sherry Koenig\*  
Mr. and Mrs. Jack A. Krause\*  
Leonard and Janet Krawiec  
Mr. and Mrs. Franc Krebs\*  
Dr. Karl T. Kristen  
Don and Jeanne Kunz  
Mr. and Mrs. Stuart Laing\*  
Mr. and Mrs. Douglas G. Lake\*  
Joe and Sue Lake  
Mrs. Susan Lamb  
Lucy L. Lambert\*  
Cpt. Claude Lambert\*  
Mr. and Mrs. Theodore J. Lanham\*  
Mr. and Mrs. Harry Larkin\*  
Peg and John Larson  
Mr. and Mrs. William J. Leugers, Jr.\*  
Joe and Kim Leugers\*  
Mrs. Nancy H. Liley\*  
Mr. and Mrs. Lloyd Lindner  
Mr. and Mrs. John Ling\*  
Mr. and Mrs. Todd Lininger\*  
Mr. and Mrs. Richard H. Lippert  
Mike and Sarah Litch\*  
Phil and Holly Littell\*



*"I moved to this beautiful county with my family in 1995 and was instantly under its spell. There were amazing vistas everywhere I stopped. Quiet ponds, endless and empty beaches...So grateful to remain here, I submit one of the many photos I've taken of this piece of heaven."*  
-Margaret Pierson

Frank and Conchita Lockhart\*  
Mr. Ron Lovasz  
Ms. Ruth Lovingood-Finke\*  
Drs. Scott and Mary Beth K. Lowe\*  
LPL Financial  
Steven Luebkehan & Sara Later\*  
Kurt and Eleanor Luedtke\*  
Mrs. Eloise E. Lund\*  
John Lund and Annie Gillette\*  
Dr. R. William Lustig and Jeri Hose\*  
Dr. and Mrs. James Lutz\*  
Mr. and Mrs. Mark J. Lyons\*  
Mrs. Cleo P. MacMillan  
Ms. Theresa Maday\*  
Mr. and Mrs. Themistocles L. Majoros\*  
Mrs. Nancy L. Malecki\*  
Marlis Mann and Tom Skinner\*  
Al and Susan Manson\*  
Dan and Lynne Mapes-Riordan  
John and Maude March

Mr. and Mrs. Karl Marsh\*  
L. Craig and Nancy Martin\*  
Mr. and Mrs. John G. Martin\*  
Mr. and Mrs. Robert T. Martin\*  
Kristi and Earle Martin\*  
Marvin and Marlo Matson\*  
Mr. Woody McCally  
Dr. and Mrs. William J. McCool\*  
Pat McCool and Maureen Penfold  
Kate and Halley McDonald\*  
Mr. and Mrs. Doug McInnis\*  
Mr. and Mrs. Stafford McKay\*  
Mr. and Mrs. Glenn M. McNett\*  
Mr. R. Duncan McPherson  
Jeff and Erin McRae  
Mr. and Mrs. Franklin B. Mead\*  
Dr. Lisa Meils\*  
Mr. and Mrs. David L. Micheltmore\*  
Vina and Phillip D. Mikesell\*  
Dr. and Mrs. Jerry A. Miller\*  
Mr. and Mrs. Frederick Miller\*  
David and Catherine Miller\*  
Mr. and Mrs. Reed Miller  
Bob and Marcia Moglia\*  
Sacha and Jane Montas\*  
Jim and Jeanne Montie\*

Ms. Kiku Obata  
Edward & Caroline G. Oberndorf\*  
Mr. and Mrs. Thomas Oettinger\*  
Mr. and Mrs. Roger H. Oetting\*  
Charles and Sara Ofenloch\*  
Kathryn Eckert Omoto\*  
Dr. and Mrs. Michael W. O'Riordan\*  
Dr. and Mrs. Mark Orringer\*  
Michael Ouzounian and Trish Rogers\*  
Ron Paczkowski & Judy Talbott\*  
Laura Gits Paine\*  
Mr. and Mrs. Jerry P. Palmer\*  
Mr. David Patton\*  
Mr. and Mrs. William D. Peace\*  
Dr. and Mrs. Jeffrey Pearson\*  
Mr. and Mrs. Sergio Pecori  
Mr. Randy Petresh\*  
Ms. Mary V. Petterson\*  
Tom and Martha Phillips\*  
Donn and Kathleen Piatt\*  
Robert and Ellen Pisor\*  
Plante Moran Trust  
Dick and Nancy S. Pobst  
Ms. Denise Poloyac  
Dr. and Mrs. Robert Pool\*  
Mrs. Bobbie S. Poor\*  
Preston P. Joyes Trust - Joyes Cottage  
Mr. and Mrs. Brian R. Price\*  
Mr. and Mrs. Clayton A. Prugh  
Jack and Janice Purse  
Lori Holstege and David Quimby\*  
Ms. Margaret M. Raben  
Mr. and Mrs. John H. Ray\*  
Mr. and Mrs. Eric R. Ray\*  
Polly Rea\*  
Mr. and Mrs. Stephen Read  
Mr. and Mrs. James Redmond  
Ms. Alexis M. Reid\*  
Doug and Beth Reid\*  
Dr. Raymond E. Reinert\*  
Peachy and John Rentenbach\*  
Keith Reynaud and Molly Donahue  
Jim Richardson  
Shawn Ricker and Steven Cacossa\*  
Bob and Bonny Risbridget\*  
Mr. and Mrs. Robert J. Roberts\*  
Carl Robinson and Karen Fujisawa\*  
Rochester Area Community Foundation  
Martha and Dan Rogalny  
Ms. Melanie A. Rogers\*  
Bill and Kate Rohlf's\*  
Mr. Thomas M. Rooks\*  
Phil and Kate Roos  
Michael and Vicki Ross\*  
Mrs. Ricky Ross\*  
Mr. and Mrs. Richard A. Rossman\*  
Chris Rowney and Siobhan Cafferty\*  
Dr. and Mrs. Todd H. Ryan\*  
Jim Ryan  
Seth Sadis and Kristen Verhey  
Mrs. Barbara A. Sander  
Cecily & Kurt Sanford & Family  
Thomas Sawyer & Kate Sawyer Vilter\*  
Mr. and Mrs. James A. Schaberg\*  
Mrs. Mary Elder Schaff  
Phil and Kathy Scherer\*

Ms. Joan E. Schleef  
Mr. and Mrs. Robert Schlueter\*  
Thomas and Suzanne Schoeneberger  
Todd and Sheila Schorer  
Scott D. Schrager & MaryAnne Ford  
Mr. and Mrs. Milford J. Schuette\*  
Mary Jo Schuld\*  
Ms. Joan H. Searby\*  
Jim and Cathy Searing\*  
Mr. and Mrs. Jon M. Sebaly\*  
Mrs. Rosalind B. Sell\*  
John and Susan Sentell  
Mary and Bob Shapton  
Mrs. Carrie A. Sharp\*  
Mr. and Mrs. David T. Shelby  
The Shelby Family  
Mr. and Mrs. Steven Sheppard\*  
John Shoaff & Julie Donnell\*  
Mr. Richard Shuster\*  
Mrs. Mary J. Siddall  
Barbara and Frank Siepker\*  
Cindy Eppolito and Charles Silver\*  
Jim Simons and Shirlee Affhalter\*  
Mr. William Slater\*  
Mr. and Mrs. Alton Smith\*  
Stephen and Sandra Smith\*  
Ms. Merrill H. Smith  
Mr. and Mrs. John B. Snyder\*  
Ms. Lianne Somerville\*  
Dr. and Mrs. David E. Spathelf\*  
Brad and Jandy Sprouse  
Chris and Ann Stack\*  
Kimberly Stam-Ranshaw & Lynn Stam  
Mr. and Mrs. Justin A. Stanley, Jr.\*  
Darlene Stanley & Harry Zoccoli\*  
Mr. and Mrs. Terry B. Stanton\*  
Philip and Erin Stead  
Mike and Marie Stearns  
Mrs. Marilyn H. Steele  
Robert Steinhilber & Mary Jo O'Connor\*  
Mrs. Eleanor B. Stephenson  
Mr. Charles G. Stockwell\*  
Don and Tricia Stogsdill\*  
Mr. and Mrs. W. Richard Summerwill\*  
Mrs. Candace K. Sutfin\*  
Suttons Bay Animal Hospital  
Mrs. Laura L. Swire\*  
Cynthia and Bruce Taggart  
Michael and Terry Tarnow\*  
Mr. and Mrs. Peter Taylor\*  
Abbot and Josie Thayer  
The Martec Group  
Richard and Sera Thompson\*  
Mike and Ginny Toal\*  
Tour de Glenn Cyclists\*  
Mrs. Jeanne Townsend  
Mr. and Mrs. John E. Tropman  
Truist  
Ms. Kathy M. Tuckerman\*  
Dennis and Kathy Turner\*  
Mrs. Katharine W. Turner\*  
Mr. and Mrs. Robert E. Turney  
Bob and Trudy Underhill\*  
United Jewish Foundation  
United Methodist Foundation of Michigan

United Way of Northern New Jersey  
United Way of Tarrant County  
Mr. and Mrs. Gary C. Valade\*  
Mr. and Mrs. Bill Valpey\*  
Josh and Angela Van Manen\*  
Mr. and Mrs. Joseph M. Varley\*  
Mr. David S. Vavra  
Mr. Larry Viskochil  
Phil and Barb Von Voigtlander\*  
Ms. Karen Wachs\*  
Mrs. Shirley Wagner  
Carl and Dorothy Walker\*  
Mr. and Mrs. F. Jon Walter\*  
Mr. and Mrs. David K. Watkins\*  
Andrew and Molly Watkins\*  
Sheen and David Watkins\*  
Doug and Jacqueline Watson\*  
Weathervane Vineyards, Inc.  
Mrs. Doris B. Webb\*  
Mr. John Weber\*  
Ben and Cynthia Weese  
Mr. and Mrs. Paul Weiner  
Mrs. Marjorie M. Weinheimer  
David Weisbach and Joan Neal  
Mr. and Mrs. Edward Weller  
Mr. and Mrs. George R. Wellman\*  
Mr. and Mrs. Tim L. Westbay  
Dr. and Mrs. R.A. Westphal\*  
Mr. and Mrs. Daniel R. White  
Patrick and Ashleigh Wiater\*  
Dr. Robert L. Willard\*  
William Harris Investors, Inc.  
Brian Williams & L. Fisher-Williams\*  
David Williams & Kim Herbert\*  
Ms. Jane Wilsher  
Barbara and Eric Winkelman\*  
Mr. and Mrs. Daniel M. Witten, II\*  
Mr. Peter C. Wolcott\*  
Mr. and Mrs. Dave Wollenhaupt\*  
Mr. and Mrs. James Woodhull, II  
Caroline and Edwin Woods\*  
Mr. and Mrs. James C. Wynns  
Douglas and Bonnie Yingst  
Bruce and Susan Young\*  
Marilyn and Gregg Zank\*  
Mr. and Mrs. John J. Zevalkink  
Mr. M. Richard Zinman  
Mr. and Mrs. John Zubik\*

Steward (\$250 - \$499)  
Anonymous (4)  
Geoff Abbate and Marty Eisenbarth  
Georgia C. Abbey  
Ms. Joanie Abbott  
Mr. and Mrs. Mark C. Allen  
Dr. and Mrs. David G. Anderson  
Mr. and Mrs. Frank J. Andress+  
Mr. Matt Anhut  
Art's Tavern  
Mr. and Mrs. Jim Aufderhaar  
Mrs. Lena A. Ball  
Mr. and Mrs. Carl H. Ballou  
Andrew Bamford and Tamera Wales  
Mr. and Mrs. David L. Banks  
Mr. and Mrs. Bruce Barton+  
Mr. and Mrs. Peter Bauer  
Thomas and Virginia Baxter  
Ron and Jane Becker  
Mr. Stephen & Dr. Nancy Beights  
Paul and Mary Lynn Belden  
Mr. and Mrs. Ran Bellows  
Lisa Benjamin and Tyler Hesterhagen  
Mrs. Rosemary R. Bennett  
Mr. and Mrs. John Bennett  
Barbara Bierlein & Tom Dillon  
Mark and Cathy Bissell  
Black Star Farms  
Jerry and Dorothy Blackstone  
Mr. and Mrs. Brent Blackwelder  
Boathouse Vineyards LLC  
Mr. and Mrs. David A. Bohmer  
Dr. Amy G. Bohner  
Robert M. Bomar and Sons  
Dr. and Mrs. Gregory G. Bond  
Mr. and Mrs. Philip Boria  
Mrs. Randy Brown  
Karla and Scott Brown  
Alice Buffington  
Mr. and Mrs. George A. Cantrick, Jr.  
Mr. and Mrs. David Carroll  
Andrew Caughey and Shelly Neitzel  
Al and Dee Chaffee  
Ms. Charlotte Chamberlain  
John and Marsha Chamberlin  
Drs. Priscilla Cogan & CW Duncan  
Jeanne Cole and Jonathan Ledsky  
Jerry and Kathy Conroy  
Mr. Robert L. Cook  
Mr. and Mrs. Raymond K. Cooper, II  
Mr. and Mrs. E. Neal Cory,II  
Dr. and Mrs. Vincent Couden  
Mrs. Carolyn L. Crane  
Rodger and Debbie Davis  
Mr. James Deaton  
Deering Tree Service  
Dennis and Ambrosia Dennehy  
Bob and Dottie Deremo  
Tom and Audrey DeVault  
David & Cynthia Domanchuk  
Bill and Peggy Dotterweich  
Mike and Sue Downs  
Jennifer and Bill Doyle  
Dr. Stephen E. Kozelko DDS  
Don and Kathryn Drabik  
Eugene E. & Elaine C. Driker  
Stephanie and Mark Duckmann  
Bob and Rae Dumke  
Bruce and Lynn Dunn  
George and Mary Eggenberger  
Mr. and Mrs. Kenneth W. Eike, Jr.  
Mr. and Mrs. Rolf Embertson  
William and Martha Encherman  
David and Donna Eskra  
Shane and Deborah Evans  
Mr. and Mrs. Daniel Ezekiel  
Mr. and Mrs. Gregg Fazzoni  
Douglas and Janine Fierberg  
Financial Avengers Inc.  
Mrs. Cathleen C. Fisher  
Ms. Nancy Fleming  
Mr. and Mrs. S. Thomas Flerlage  
Mr. and Mrs. James Fleser





Steward (\$250 - \$499) cont.

James and Mary Fluehr  
Marc and Laura Foerster  
Ms. Carey Ann Ford  
Doug and Julie Frazier  
Deborah Froeb and Tim Gardner  
David and Sharon Geisler  
Richard and Marianne Glosenger  
Mr. and Mrs. Steven J. Goldstein  
Ms. Emily Goodell  
Ms. Cynthia Goodrick  
Gourdie-Fraser, Inc.  
Mr. and Mrs. David Grauer  
Mr. and Mrs. Thomas N. Griffith  
Mr. Rod Groleau  
Lori and Steve Grossnickle  
Ms. Karen Rubner Grotberg  
Mr. and Mrs. Robert M. Grover  
Mr. and Mrs. H. Louis Gurthet  
Charles and Kandi Hacker  
Ms. Anne M. Hamada  
Anne Harper and Greg Nobles  
Gordy and Jeanne Hatt  
Paul and Peggy Haviland  
Michael and Jeanne Haynes  
Ms. Sherry Holcomb  
Lloyd and Christeen Holdwick  
Mr. J. Edward Hollender  
Alison Horton and Kathy Kaczynski  
Mr. Wes Hough  
Mr. Thomas Hunt  
Mr. and Mrs. David D. Hunter  
Mrs. Monica Inchaustegui  
InterAct for Change  
Mrs. Barbara A. Irwin+  
Brian and Jennifer Jaffe  
Mrs. Mary E. Jellema  
Mr. David C. Johnson+  
Jay and Betsy Johnson  
Dr. and Mrs. Richard S. Johnson  
Mr. and Mrs. Bradley J. Johnson  
Ms. Kari Karr  
Mr. and Mrs. Charles W. Kepler  
Pat Kernaghan and Janet Ward+  
Mr. and Mrs. Alan T. Kirby  
Mr. and Mrs. Charles Kraus  
Lee Kremin & Marjolijn vander Velde  
Mr. and Mrs. James D. Kuras  
David and Judith Kurtz  
Mr. and Mrs. Bradley E. Laffrey  
Mr. and Mrs. Edward O. Lanphier, II  
Mr. and Mrs. Robert Laven  
Ms. Karen Ledsky  
Leelanau Cheese Company  
Leelanau Enterprise  
Mr. and Mrs. James W. Leenhouts  
Mr. and Mrs. David M. Leiser  
Ms. Linda LeMieux+  
Mr. and Mrs. Robert J. Leppink  
Anne Leugers and Elmer Lipp  
Lilly Endowment, Inc.  
Lincoln Financial Foundation, Inc.  
David P. Lloyd  
Gus and Katie Lo  
Catryna and Gary Loos  
Staton and Carol Lorenz

Ms. Meg M. Mallon  
Karen C. Martin  
Mason Wells, Inc.  
John and Janet Mattson  
Bill and Jan Maxbauer  
Mr. and Mrs. James McAndrews  
Tim and Anita McCabe  
Mr. and Mrs. Gary McCausland  
Kenneth and Barbara E. Melichar  
Brian D. Melzian, Ph.D.  
Tim Miank and Kathy Richards  
Mr. and Mrs. Leon B. Michael+  
Pat and Laura Michael  
Michigan Trail Maps  
Mr. and Mrs. Richard C. Mileham  
Dennis Miller & Daina Briedis  
Drs. Robin Lin Miller and Miles McNall  
Dr. Jack Mobley+  
Mr. and Mrs. Donald Molten  
Mrs. Betty Moore  
James and Kathryn Morley  
Richard and Abby Mortensen  
Mr. and Mrs. James M. Moskalik  
G. Michel Mott and L. Kim McManama  
Ms. Patricia Moulton  
Dr. Janet Navarro  
Mr. and Mrs. Ronald N. Nichols  
Jeffery and Susan Nielson  
Ocean Reef Community Foundation  
Rich and Adrienne Odell  
Ms. Susan P. Oliver  
Mr. and Mrs. William Olsen  
Alan and Kimberly Page  
Mr. Wes Parker  
Joe and Zoe Pearson  
Mr. L. Harlan Peck  
Pfizer Foundation  
Edmund and Ann Piet Anderson  
Anneke and Guy Plamondon  
Glenn and Rasa T. Poorman  
Ms. Donna Popke  
Mr. John Preston  
Dr. John L. Putnam  
Stephen and Marcie Qua  
Raymond James  
Ms. Laurie G. Remter  
Gregory and Brenda Rener  
Mr. and Mrs. Richard O. Ristine, Jr.  
Mr. and Mrs. Ronald R. Robinson  
Mrs. Sarah F. Roloson  
Mr. Edward Roloson  
Ms. H. Teak Roloson  
Mrs. Marcia L. Rose  
Jim and Suzy Royce  
Tim and Janet Ryan  
Judith Rycus & Ronald Hughes  
Lucinda and David Sabino  
Dr. and Mrs. Richard J. Schilling  
Frank Sciannella  
Dennis and Polly Selkoe  
Mr. and Mrs. James R. Shannahan  
Mrs. Patricia D. Shea  
Ms. Patricia Shiley  
Mr. and Mrs. Kent Shoemaker  
Michael and Karen Sinclair  
Bill and Lynell Singer

Mr. and Mrs. Robert Smart, Jr.  
Eric Smith & Elasa Schaff Smith  
Mrs. Sharon Smith  
Mr. Thomas Smith  
Andy and Marietta Smith  
John Snodgrass & Janet Fleshman  
Ms. Deborah Somerville  
Dr. John Spencer  
Quinton and Margaret St. John  
Mr. and Mrs. John H. Stanley  
Stephanie Schlatter Art  
Ms. Catherine W. Stephenson  
Larry Stockline  
Mr. and Mrs. Donald J. Stuhldreher  
Mr. and Mrs. James J. Stukel  
Sunshine Spread  
Mr. Charles H. Sutfin  
Mr. Lee Taft  
Amy and Brian Tennis  
Thomas H. Thibault & Ruth Winter  
Ms. Kathy Thomas  
Dan and Sue Tobin+  
Mr. and Mrs. Steve A. Torok  
Shannon and Chris Torres  
Trattoria Funistrada  
Traverse City State Bank  
Carol and Ruben Trono  
Mr. and Mrs. John Ulrich  
United Way of Northwest Michigan  
Martha Van Eenenaam-Iwanicki & Tom Iwanicki  
Mr. and Mrs. Ken VanElslander  
Gary and Georgiana Vann  
Warren and Julie Veltman  
Mr. and Mrs. Perry Pentiuk  
VKTOR  
The W.W. Group, Inc.  
Heidi Weckwert and Maude Babington  
Steve and Nancy Wegienek  
Mr. and Mrs. Robert H. Wellborn  
Mr. and Mrs. Max Wendell  
Ryan and Meredith Whiteford  
Mr. and Mrs. Douglas Whitley  
John and Kate Wiegand  
Lisa Wilsher & Steve Chamberlin  
Katherine and Brian Wilson  
David and Christine Winterson  
Mr. and Mrs. John Withee  
Bill and Rita Witter  
Norman and Susan Woerle  
Dr. Stephen A. Wyatt  
Dr. and Mrs. Daniel Yamshon  
Duke Yoon  
George and Kathleen Zink

Contributer (\$100 - \$249)

Anonymous (13)  
Mr. and Mrs. Weston W. Adams, Jr.  
Ms. Anne F. Adams  
David and Patricia Ager  
Mr. and Mrs. Robert D. Aicher  
Ms. Gloria Albrecht  
Dr. Rosemary R. Berardi  
Ms. Anne Hatcher Berenberg  
Vicki Berglund & Andy Gould  
Steven and Christina Bergmans

Tom and Nancy Alfieri  
Mr. and Mrs. Robert L. Afflen  
Terry and Sandra Allen  
Suzette Almas & Salvatore LoPiccolo  
Loretta Ames  
Barbara Ames  
Dr. and Mrs. Gordon Amidon  
Mr. and Mrs. Allen A. Ammons  
Mr. William H. Anderson  
Phil and Bev Anderson  
Mrs. Mary H. Anderson  
Mr. and Mrs. Paul A. Anderson  
Paul and Melisse Anderson  
Mr. and Mrs. James P. Andres  
Tom and Marsha Andres  
Andrew and Susan Appel  
Mike and Ruth Arents  
Adam and Mary Arents  
Mrs. Lisa E. Armas  
Sara and Rick Armbruster  
Ms. Judy Armstrong  
Ms. Cheri Arsenault  
Mrs. Kathleen Arvo  
Paul and Nancy Audette  
Mr. and Mrs. Louis E. Aug  
Mr. and Mrs. Richard Austin  
Rich and Cassie Axtell  
Mr. and Mrs. John G. Bachman  
Mr. Stephen Bahlke  
Mr. David Bahr  
Mr. and Mrs. Joel Baillie  
Dr. and Mrs. Walter M. Baird  
Ms. Jane Baker  
Mr. and Mrs. Fred Bakker-Arkema  
Peter and Lauren Bakker-Arkema  
Kathryn S. Balcerski  
Mr. and Mrs. David F. Ball  
Mr. and Mrs. John F. Ball, Jr.  
Mr. and Mrs. John M. Ballantyne  
Howard and Vivian E. Ballein  
Mr. and Mrs. Mike W. Bandy  
Ms. Patricia Bard  
Mr. and Mrs. Gary Bardenhagen  
Mark and Marilyn Bareman  
Donna and Bill Barker  
Mr. and Mrs. Charles L. Barnell  
Ms. Jennifer Barnes  
Mr. and Mrs. Patrick J. Barry, Jr.  
Mr. and Mrs. George A. Basta, Jr.  
Mr. David S. Battle  
Mr. and Mrs. Don Baty  
Mr. and Mrs. Robert H. Bayer, Jr.  
Jack and Renee Beam  
Mr. Jeffrey R. Bean  
Dr. and Mrs. Royce L. Beers  
Mr. and Mrs. John E. Beeskow  
Ms. Marcia Bellinger  
Ms. Paulina Bendana  
Dr. and Mrs. Carl Benner  
Jan Benson & Nancy Whitelaw  
Mrs. Gill Bentley  
Ms. Debra Benton  
Dr. Rosemary R. Berardi  
Ms. Anne Hatcher Berenberg  
Vicki Berglund & Andy Gould  
Steven and Christina Bergmans

Mr. and Mrs. Edward Beuerle  
Mr. and Mrs. Dan Biber  
Mr. Vinson L. Bidlingmeyer  
Mrs. Nancy A. Bierley+  
Big Chief, Inc.  
Mr. Charles W. Binder  
Duane and Jean Bingel  
Dr. and Mrs. Harry J. Bingham  
Dr. and Mrs. James G. Bingham  
Mr. and Mrs. Kipp Bingham  
Birchwood Shores Preservation Assoc.  
Mr. and Mrs. Lowell O. Bird  
Tom and Gwen Bischoff  
Mr. and Mrs. James G. Blashill  
Mr. and Mrs. Robert Blohm  
Mr. and Mrs. Timothy Bloomquist  
Mr. and Mrs. William C. Bobbs  
Janis Bobrin and Mike Allemang  
Ms. Joan C. Bock  
Mr. Linton Bodwin  
Gina and Ron Boe  
Mr. and Mrs. Robert A. Bolak  
Paul and Karen Bolhuis  
Mrs. Sally B. Booth  
Mr. and Mrs. Peter A. Borden  
Mr. and Mrs. William A. Borre  
Mr. and Mrs. Dave Borton  
Mr. Jack A. Bosgraaf  
Thomas and Susan Boucher  
Mr. and Mrs. Jon R. Boulton  
Mr. John Bourbonnais  
Mr. John Bourgault  
Robert and Susan Bowes  
Mr. Daniel J. Boynton  
Ms. Marcia J. Boynton  
Will and Margee Bracken  
Steve and Elizabeth Bradbury  
David and Susan Brandes  
Ms. Suzanne Brandt  
Jim and Robin Bransky  
Mr. and Mrs. Christopher E. Branson  
Susan and Douglas Brengle  
Brian and Cathy Brenton  
Mr. Timothy Brick  
Barbara J. Briner  
David and Patricia Brogan  
Scott and Wendy Broshar  
Mr. and Mrs. Gary G. Brown  
Judy & Meg Brown & David Ward  
Mr. and Mrs. Jack E. Brown  
James and Laura Brown  
Jim and Laura Brown  
Rev. Philip and Alice Bruening  
Michael and Jeanine Bruening  
Ms. Mary Jo Brumbaugh  
Mr. William W. Bryant  
John and Susan Bryant  
Mr. and Mrs. Richard W. Budinger  
Ms. Sandra Buell  
Paul and Tanya J. Bulhuis  
Mr. and Mrs. Charles J. Bumb  
Mrs. Carol P. Burchfield  
Joe and Joni Burda  
Jim and Natalie Burk  
Phil and Laura Burk  
Mr. and Mrs. Randall Burkert

Mr. and Mrs. Keith W. Burnham  
Mrs. Avery L. Burns  
Mr. and Mrs. Christopher Burns  
Mrs. Donna D. Burr+  
Steven and Barbara Bursian  
Dr. and Mrs. Paul D. Burstein  
Debbie Varley Burt  
Henry and Dini Burt  
Ms. Vivian K. Bust  
Chuck and Susan Buxton  
M. Christine Byron and Thomas Wilson  
CA Technologies  
Mr. and Mrs. David Campbell  
Mrs. Maureen Campbell  
Frederick and Denise Campbell  
Mr. and Mrs. Michael P. Campo  
Mr. and Mrs. Howard W. Cann, III  
Mr. David G. Card  
Ms. Margaret Carmody  
Ms. Andrea Carolus  
Mr. and Mrs. Jack L. Carpenter  
Ms. Gayle L. Carpenter  
Robert Carr & Lydia Arnold  
Thomas and Denise Frieda Carr  
Mr. and Mrs. Gene S. Cartwright  
Mr. and Mrs. John Case  
Ms. Karen Casebeer  
Mat and Jessica Cashman  
Philip Castillo & Susan Rundle  
Dr. and Dr. Ceferino Cata  
Mr. R. Weston Caughlan  
Mrs. Bethany A. Cebula  
Michael and Kavitha Celentino  
Mr. and Mrs. David D. Cell  
Mr. and Mrs. James L. Centner  
Mr. and Mrs. Mark D. Cerny  
Jim and Linda Chalal  
Randy and Mari Chamberlain  
Mr. and Mrs. Stephen C. Chambers  
Mr. and Mrs. William J. Chambo  
William Champion & Beverly Pylman  
Mrs. Joan Chandler  
Mr. Christopher Channer  
Mary Ann and Reuben Chapman  
Charles Johnson Family Investment LLC  
Ms. Michelle Charron  
Bill and Anne Chatfield  
Chef's Pride Catering  
Cherry Bay Orchards, Inc.  
Mr. and Mrs. David Chesterfield  
Mr. and Mrs. Donald Christie  
David and Susan Chrostek  
Jerry and Mary Faggan Churchill  
Terry and Sandra Ciesielski  
Mr. and Mrs. Willard F. Clark  
Michael and Jodi Clay  
Mr. and Mrs. Allan J. Claypool  
Carol and David Clifford  
John and Donna Clingerman  
Bryan and Emma Cloninger  
Mr. and Mrs. John M. Cloud  
Dotti Clune and Jill Henemyer  
Coldwell Banker Schmidt Realtors  
Mr. and Mrs. Bill Cole  
Mr. Douglas Cole  
Mr. and Mrs. John D. Coleman

Mr. and Mrs. Pope Coleman  
Michael and Barbara Collins  
Grant Cone and Tracey Paddock  
Mr. William C. Connelly  
Peter and Lauren Connor  
Bill and Linda Connor  
Anita Constant, Jane Gard & Terry Meyers  
Mr. and Mrs. Glenn E. Cook  
Kara Cook and Michael Beno  
Karl and Tracy Cooper  
Mr. and Mrs. Bruce Cornell  
Mr. and Mrs. Daniel B. Cote  
Jim and Lynne Cowart  
W. Scott Craig & Carol Bawden  
Mr. Thomas W. Crampton  
Ms. Lynne Crane  
Frank and Mary Crane  
Jennifer Crane and Scott Denning  
John and Kitty Cranor  
Carl and Marilyn Creighton  
Ms. Kathleen J. Crispell  
Timothy and Margaret Cross  
Mr. and Mrs. Alexander Cruden  
Carol and Dan Cruz  
Lori & Sean Cryan  
Crystal River Outfitters, The Cyclery & M-22 GA  
Mr. Thomas A. Culbertson  
Mr. and Mrs. Roger Cummings  
Mr. and Mrs. Cedric G. Currin  
Mr. and Mrs. Stephen J. Custer  
E & K Custer  
Dr. and Mrs. Ben J. Czerniawski  
Mr. Michael Dailey  
Rod and Marti Daniel  
Ms. Carolyn Danielson  
Mr. Donald D'annunzio  
Janet Darby  
Mr. Douglas Darland  
Mr. Henry Darlington  
George and Maryellen Daston  
Mr. and Mrs. John G. Davey  
David and Barbara Burkhardt  
Nancy and Tom Davies  
T. Jeff Davis & Ken Smith  
Mr. Thomas K. Davis  
Ms. Catherine M Davis  
Emily and Eric Davis  
Ann and Richard DeBoer  
Mr. and Mrs. Ralph DeCew  
Mr. and Mrs. Daniel L. Deering  
Joe Defors & Jan Rygwelski  
Ms. Diane P. DeHuff  
Annette Deibel+  
Ms. Laura L. Deibel+  
Dale and Meg DeJager  
Ms. Maureen J. Delaney-Lehman  
Gregory and Lucie Demanski  
Ms. Laura Demanski  
Mr. R. Garret Demarest  
Mark and Kate Dennis  
Joyce, Michael & Thomas Deren  
G. Paul and MaryAnn Derosa  
Mr. Stephen F. Deters  
Mr. and Mrs. Mark J. DeVirgilio

Mr. and Mrs. George DeWeese  
Mr. Gino DiClemente  
Kevin Diels and Jane Damschroder  
Mr. and Mrs. Paul F. Diller  
Mr. and Mrs. William P. Dillon  
Mr. and Mrs. Robert Diloreto  
Kathy Dinkel  
Dave and Carol Dixon  
Rob and Barb Dobson  
Mr. and Mrs. William L. Dockter  
Mr. and Mrs. Larry L. Dodd  
Mrs. Rosemary J. Doherty  
Ms. Kathleen Doherty  
Mrs. Jane W. Domke  
Tim Donaghy and Margy Klesney  
Cheryl Donakowski & Frank Misplon  
Mrs. Maureen T. Doran  
Bill and Diane Doran  
Ms. Nancy L. Dotlo  
Robert and Nancy Doughty  
Mr. and Mrs. Michael N. Doyle  
Paula and Bryce Dreeszen  
Mr. and Mrs. Joe Dressel  
Dr. Shelley Drier  
Ms. Elissa Drinker  
Mrs. Elizabeth Drinkaus  
Mr. and Mrs. Michael DuBrul  
Mr. and Mrs. Jack Duffy  
Drs. Michael and Carrie Dunn  
Mr. and Mrs. C.R. Dunn  
Mr. and Mrs. Michael Durbin  
Mr. and Mrs. Richard Durbin  
Mrs. Patricia Dutmers  
Mr. and Mrs. G. Thomas Dutmers  
Mr. and Mrs. Delbert Dyche  
Ms. Gretchen Dziadosz  
Elizabeth and Mike Eagles  
Susan H. Earl  
Thomas Ebeling  
Ron and Betsy Eberhardt  
Mr. and Mrs. Richard Eby  
Ms. Kathy Egan  
James and Jill Egan  
Mrs. Judith M. Egeler  
Mr. and Mrs. Robert Elliott  
Fred and Nancy Elmore  
Bob and Judy Elsey  
Mrs. Lin Emmert  
John and Linda Engelhard  
Ms. Sally Erickson  
Dr. Claire Ernst & Al Bedecarre  
William and Wendy Ernzen  
Ms. Judy Erwin  
Gail and Keith Evans  
Mark and Annette Evans  
Mr. Albert A. Evans  
Dr. and Mrs. James P. Fadely  
Ms. Leigh Fairey  
Mrs. Jeanne P. Falberg  
Mr. and Mrs. Hugh A. Farber  
Walter and Marjorie Farrell  
Carolyn and Dave Faught  
Dr. David S. Feenstra  
Ms. Susan V. Fehrenbach  
George Felton & Karen Thomas  
Mrs. Georgie L. Fenton





Contributer (\$100 - \$249) cont.

Andrew and Lita Ferdinand  
Rev. and Mrs. Gerald Ferguson  
Mr. and Mrs. Jack Ferguson  
Mr. Mason Ferry  
Pete and Julie Finch  
Peter and Whitney Finch  
Mr. Harry J. Finke, IV  
Mr. and Mrs. Doug Finton  
Fischer's Happy Hour Tavern  
Mr. and Mrs. Jud Fisher  
Ken and Kris Fishman  
Nancy Fitzgerald & Jerry Agnew  
Mr. Tyrone G. Fleeman  
David Foley & Margaret Willman  
Mr. Michael Fonte  
Mr. Richard W. Force  
Allen and Nancy Forsaith  
Mr. Eugene Forster  
Robert and Mary Foster  
Ben and Judy Fowler  
Mr. Chuck Fraenkel  
Mr. Andrew W. Frank  
Scott and Jean Frank  
Sam and Kelly Frank  
Raymond and Molly Franks  
Mrs. Nancy P. Freeman  
James S. and Judith N. Freeman  
Mrs. Bercie C. Frohman  
Michael Gadbow & Sally Chandler  
Mrs. Shirley A. Gain  
Ms. Jane L. Gale+  
Mr. and Mrs. J. Carl Ganter  
Mr. and Mrs. Paul D. Gard  
Ron and Chris Gardhouse  
Mr. and Mrs. David T. Gardner  
Stephen Gardner, Jr. & Margot Nacey  
Gene and Kathy Garthe  
Martin and Mary Garvin  
Mr. and Mrs. Billy R. Garwood  
Ms. Mimi Gass  
Mr. T.H. Gasteyer, II  
Mr. and Mrs. Norm J. Gauthier  
Mrs. Lynne I. Gauthier  
Mr. and Mrs. Jack Gaziano  
Paul and Teri Gelter  
Mrs. Barbara F. Gentile  
Ms. Florence B. Gerndt  
Mike and Missy Gettle  
John Gierak and Dona Tracey  
Thomas and Kirsten Gilbert  
Scott and Erin Giles  
Mr. and Mrs. Don B. Gill  
Dr. and Mrs. Lynn E. Gill  
Mr. Ed Gill  
Donald Gilligan & Regina Maniscalco  
Ms. Beth Gilligan  
Al and Susan Gilson  
Dr. and Mrs. James Girardy  
Ms. Victoria Rea Gits  
George and Pat Giza  
Mrs. Aurora Glettler  
Mr. and Mrs. Charles Godbout  
Mrs. Beth Goebel  
Mr. and Mrs. Richard J. Goettle, IV  
Mr. Richard S. Golas

Victor and Denice Goldschmidt  
Heather Gaffney and Jeffry Goliber  
Dr. and Mrs. James D. Goodspeed  
Mr. and Mrs. William B. Goodspeed  
Ms. Florence Goodyear  
Mr. and Mrs. Harvey Gordon  
Sarah Gordon and Martin Saad  
Gorsline Runciman Funeral Homes  
Dr. and Mrs. Jack W. Gottschalk  
Ms. Mary Graham  
Marvin Grahn and Christine Hauke  
Mr. Erick Takayama  
Allan and Sydel Grant  
Anne and Jeffrey Grausam  
Mr. and Mrs. Larry L. Graves  
Jim and Christine Gray  
Mr. and Mrs. William Green  
Tim and Pat Green  
Jere and Judy Green  
The Greeney Family  
Greenleaf Trust  
Mrs. Linda Gregory  
Mr. Gordon Grevenstuk  
Mr. and Mrs. Richard Grewe  
Jim and Mary Jo Grogan+  
Mr. and Mrs. Mike Groleau  
Mr. and Mrs. James H. Gross  
Mr. and Mrs. Raymond Gross  
Mr. and Mrs. John E. Grote  
Ms. Mary McNally Grover  
Mr. Gerald Gruska  
Mr. and Mrs. Michael D. Gudenau  
Ms. Laurie S. Guy  
Mr. Charles R. Haberlein, Jr.  
Mr. and Mrs. James Hackenberger  
Mr. and Mrs. Donald E. Hacker  
Juliet Hafford and Barbara Trippe  
Ms. Daneen Haggard  
Ms. Karen Hague  
Mr. Craig Hamilton  
Mr. and Mrs. Carl F. Hammond  
Mr. William Hankinson  
Mr. and Mrs. Robert Hanpeter  
Sherrie and Logan Hardie  
Ms. Barbara Hardy  
Mr. and Mrs. Paul Harkness  
Harriger Construction, Inc.  
David and Marcia Harris  
John C. and F. Susan Harrison  
Mr. and Mrs. Michael T. Hartigan  
Mr. Tyler Hartwell  
Sue Shink and Tom Hatch  
Mr. and Mrs. David W. Haughn  
David and Margaret Hauser  
Mr. and Mrs. R. Tucker Hawkins  
Mrs. Lucy L. Hazlegrove  
Mr. and Mrs. Carl B. Headland  
Randal and Molly Heemstra  
Mr. and Mrs. Jerry L. Heiman  
Mr. and Mrs. James Heinzman  
Ms. Nancy Heinzmann  
Scott and Catherine Heiser  
Mr. Mark Helfers  
David and Sharon Hendricks  
Dennis and Lynne Hendricks  
James Hengelbrok & Mary Haberland

Dr. and Mrs. Gregory L. Henry  
Jim and Cheryl Henry  
Marc and Sarah Hernandez  
Eileen Herr and Dave Klinestiver  
John D. and Ardis Herrold  
Chuck and Anne Hesse  
John and Linda Hewett  
Mr. and Mrs. Steve R. Hext  
Mrs. Gail Hicks  
Joe and Mary Hilgeman  
Craig and Lindsay Hine  
Mr. Erick Hinkelman  
Ms. Lisa Hinkelman  
Tom Hinsberg & Connie Soma  
Mr. and Mrs. Warren K. Hinsch  
Warren and Suzanne Hinsch  
Ms. Caroline Hirth  
Mr. and Mrs. William Hischke  
Theresa Hitchens  
Mrs. Carolyn B. Hobart  
Tracy Hobbs and Edward Sullivan  
Ms. Elizabeth Hoehner  
Mr. William A. Hoffman  
Mr. Benjamin Hohnke  
Gale Holcomb and Jennifer Reid  
Amanda Holmes and Dan Stewart  
Drs. Paul and Teresa G. Holtrop  
Mr. and Mrs. Jay Homan  
Mr. and Mrs. Ralph S. Hommel  
Dr. and Mrs. J. Michael Hoog  
J. Stephen and Leslie Hooper  
Andrew and Catherine Horning  
Mrs. Georgina Hosmer  
Houston Holdings LLC  
Dave and Mary Hovest  
Mr. and Mrs. Michael R. Howard  
Mr. and Mrs. Terrence Howe  
Mr. and Mrs. Brian Howe  
Jordan C. Hoyer  
Mr. Gilbert Hudson  
Rowell and Alice Huesmann  
Mr. Richard K. Huey  
Mr. and Mrs. Gary J. Hughes  
Mrs. Kay B. Hughes  
Christopher and Elizabeth Hughes  
Nancy Hulka and Duane Dunlap  
Mr. and Mrs. James E. Hullverson  
Mrs. Alice S. Hunt  
Dan and Barb Hurlbutt  
Mrs. Mildred Hurley  
Mr. and Mrs. Michael D. Husband  
Ms. Brenda J. Husband  
Ms. Amy Hutchinson  
Mr. and Mrs. James R. Hutchison  
David and Linda Hutchison  
Tom and Kathy Hy  
Steven Hyde  
Richard Hylwa & Kathryn Allen  
Mr. Doug Ibold  
Mrs. Ruth L. Iezzoni  
Indian Beach Association  
Ms. Mary Kent Ireland  
Dr. James R. Irwin  
Win and Kyle Irwin  
Dr. and Mrs. Konrad D. Kohl  
Lary and Sarah Jackson  
Ms. Annie James  
Mr. and Mrs. John T. Jameson

Mr. and Mrs. John T. Jameson, III  
Mr. and Mrs. Daniel H. Jamieson, Jr.  
Mr. Don Jandernoa  
Mr. and Mrs. David Janizek  
Dr. and Mrs. Albert B. Janko  
Mr. Kyle Jarzmik  
Brent and Debra Jeffers  
Mr. Alex Jemal  
Laurel and David Jeris  
Douglas B Jester & Colleen Barry  
Mrs. Barbara Jillson  
Mr. and Mrs. Daniel W. Johnson  
Dr. and Mrs. Tom M. Johnson  
Mr. Robert H. Johnson  
Mrs. Marilyn D. Johnston  
Matt and Kelly Johnston  
Mrs. Ruth Jolliffe  
Ms. Louise Coleman Jones  
Ms. Ann Jones  
Mrs. Jackie Jones  
Ms. Judy Jorgenson  
John and Janet Juarez  
Chuck and Susan Julian  
Mike and Sarah Julien  
Joe and Beth Junewick  
Mr. and Mrs. Dave Kammerer  
Ms. Angela Kandler  
Allan and Patricia Kapolka  
Mr. and Mrs. James L. Kareck  
Vahan and Mary Karian  
Olof Karlstrom and Olivia Maynard  
Mr. and Mrs. Robert F. Karner  
Mr. and Mrs. John Kasmersky  
Mr. John H. Katt  
Paul and Yoka Kaye  
Michael and Mary Kedzierski  
Ms. Grace Keeble  
Ellen and Jeff Keen  
Libby Keenan & David Houston  
Dr. and Mrs. Charlie Kehr  
Mr. and Mrs. Scott Keller  
Mrs. Jacquelyn Kellogg  
Mr. and Mrs. Charles H. Kellogg, Jr.  
Barbara Kelly & Ruth Frey  
Mr. and Mrs. Michael E. Kenney  
Nancy Keppelman & Michael Smerza  
Ed and Karen Ketterer  
Blake and Lynda Key  
Don and Jan Kiessel  
Mr. James F. Kimpel  
Jason and Sandy Kimpel  
Mrs. Susan D. King  
Mr. and Mrs. Raymond Kingsley  
David Kirby & Martha Topol  
Dan Klein  
Christopher and Joan Kmotorka  
Bruce and Barbara Knapp  
Ms. Nancy Knight  
Mr. and Mrs. Paul Kochanny  
Sandy and Rick Koehler  
Bryan and Katie Koehler  
Mr. and Mrs. Lawrence D. Kohl  
Mr. and Mrs. Paul Izenberg  
Mr. and Mrs. Douglas Kohlbeck  
John and Maria Kolozsvary  
Mrs. Ruth Korzon

Mr. and Mrs. John R. Koschara  
Richard Kosinski & Deborah Ochs  
Larry and Bonnie Koskela  
Ms. Carlyn Kostyk  
Mr. and Mrs. John M. Koval  
Mr. and Mrs. Jeff Kozisek  
Mr. and Mrs. David Kroll  
Robert and Mary Anna Kruch  
Mr. and Mrs. Peter F. Kunz  
Ms. Luann K. Labian  
Mr. Greg Lacross  
Mr. and Mrs. James Ladd  
Lake Leelanau Lake Association  
Jim, Anita and Kathryn Lamont  
Greg and Pam Landa  
Mr. and Mrs. Lawrence Lander  
Mr. and Mrs. Bruce D. Lang  
Mr. Robert C. Lanphier, III  
Stephen LaRiviere & Jennifer Yanover  
Mr. and Mrs. Thomas R. Larkin  
Lynne and Robert LaSarge  
Tom and Pam Laureto  
Mr. and Mrs. Frederick Leaske  
Dr. and Mrs. Russell A. LeBlanc  
Dr. and Mrs. William J. Lee  
Dr. and Mrs. Bruce C. Lee  
Mrs. Judie Leece  
Leelanau Studios  
Mr. and Mrs. George A. Lemcke  
Michael and Teresa Lenhart  
Betsy and Dana LePoidevin+  
Mr. and Mrs. Dan Leppek  
Mark and Lori Leugers and Family  
Mr. and Mrs. Paul T. Leugers  
Thomas and Diane Leugers  
Ms. Jennifer Leugers  
Skip and Liz Leupp  
Gerald Levine & Sarah Pokempner  
Ms. Ruth A. Lezotte  
John and Cynthia Lhost  
Mr. Bruce E. Lichliter  
Ms. Nell Licklider  
Steve and Marcie Lindo  
Laurie and Dan Lisuk  
Larry and Lorraine Liszewski  
Nick and Kathy Lomako  
Chris and DawnMarie Lorentson  
Bill and Karen Lott  
Mr. and Mrs. Richard A. Love  
Susan L. Lowell  
Mike and Kathy Lubig  
Douglas and Lynne Luciani  
Dr. and Mrs. John E. Lund  
Ms. Kristen Lund  
Mr. Joel A. Lutz  
Mr. and Mrs. Donald W. Lystra  
Mr. and Mrs. E. Thomas Maguire  
Mr. and Mrs. Peter S. Maher  
Mr. and Mrs. J. Parke Malcolm  
Ray and Penny Malcoun  
Morgan and Sam Mamudi  
Barry and Debbie Marsh  
Mr. Vance Marshall  
Mr. Don Martines  
Mr. and Mrs. Richard J. Mashke  
Kate Mason & Mary Lee Miller

Jim and Karen Massaroni  
Dr. Victor Mastaglio  
Anne Mather and Emmett McEldowney  
Randy and Cindy Matz  
Alex and Jane Maximovich  
Mr. and Mrs. Jerry May  
Ms. Ellen J. Maycock  
Mr. and Mrs. Robert A. Maynard  
Gary and Cheryl Mazurek  
Lee and Ross McAninch  
Mr. and Mrs. Michael P. McCalden  
Linda McCarthy  
Thomas and Rebecca McCarthy  
Mr. and Mrs. Richard McClear  
Judy and Chuck McConnell  
Dan and Susan McDavid  
David and Catherine McDowell  
Dorothy McGavran  
Mr. and Mrs. James G. McGovern  
Ms. Susan B. McHugh  
Mr. and Mrs. John McInnis  
Mr. and Mrs. Edward McInnis  
Harold and Kanda McKee  
Bob McKelvey  
Kristi McKenzie and Frank Sellgren  
Jeri McKeon-Andersen & David Andersen  
Bill McKinley and Judith Briggs  
Bob and Cathy McKinley  
Allan and Mary McKisson  
Jim and Ellen McLean  
Tom and Shirley McLenithan  
Mr. and Mrs. Gary McLeod  
Mr. and Mrs. John McLoughlin  
Larry McMahon and Linda Anderson  
Michael McManus & Sue Brighthouse  
Mr. and Mrs. Michael A. McManus  
Mr. and Mrs. S. Craig McMillan  
Mr. and Mrs. John L. McNamara  
Mr. and Mrs. G. Scott McNett  
Ms. Barbara McNitt  
Bob and Sukie McNutt  
Ms. Gaytha McVay  
Philip and Ann Mease  
Mr. and Mrs. Ken Medaris, Jr.  
Ms. Julie Medlin  
Mr. and Mrs. George N. Meeker  
Mila and Warren Meeks  
Rob and Anne Meermans  
Greg and Linda Meide  
Mr. and Mrs. Robert Meldrum  
Mr. Robert M. Mello  
Mr. and Mrs. John W. Melstrom  
Mr. and Mrs. William Meserve  
Mr. and Mrs. James P. Meyer  
Mrs. Ann P. Meyers  
Ms. Sara Michael  
Nancy Mikolaitis & William Hinds  
Mr. and Mrs. Donald R. Mileski  
Dr. and Mrs. Keith W. Miller  
Mr. and Mrs. Richard Miller  
Ms. Johanna S. Miller  
Phillip and Ayumi Miller  
Greg and Suzanne Miller  
Ms. Ann O. Miller  
Alan and Jane Miller

Gerald and Rita Miller  
Scott Mills and Kelly Kieft  
Mr. and Mrs. Robert G. Milne  
Susan and David Milne  
Mr. and Mrs. Fred Missad  
Mr. and Mrs. Robert Mitchell  
Ms. Martha D. Mitchell  
Mr. and Mrs. Charles Moffett  
David L. Monstrey & Katherine Heil  
Jeffrey Moon and Joselyn Moore  
Mr. and Mrs. David B. Moore  
Ms. Jennifer R. Moore  
Ms. Martine Duchatelet Moore  
Richard and Jami Moore  
Mr. and Mrs. Preston D. Moose  
Ms. Ruth Ann Morgan  
Corey and Sarah Morgan  
Andrew Morrill and Marie Knoerl  
Mr. and Mrs. Michael D. Morris  
Mr. John Morris  
John and Nancy Morris  
Gary A. Morrison  
James Morrison  
Mr. and Mrs. Andrew B. Morrow  
Howard Mueller & Rachel Mickelson  
Mr. and Mrs. William Muempfer  
Mr. and Mrs. Michael Muladore+  
Mr. and Mrs. Timothy Mulherin  
Ms. Marci Muller  
Mr. and Mrs. Michael F. Mulvaney  
Ms. Susan Murchie  
Mr. and Mrs. Dennis Murphy  
Ken and Pat Musson  
Dennis and Leigh Ann Naas  
Mr. Charles Needham  
Mr. and Mrs. John D. Nehil  
Tania and Carter Neild  
Mr. John A. Nelson  
M.G. and Donna Nelson  
Ted and Jennie Nelson  
Mr. and Mrs. Carrol R. Nichols  
Mrs. Margaret V. Nielsen  
Mr. Sam Niemi  
Mr. and Mrs. David Nitschke  
David Noling and Victoria Bailey  
Catherine and Robert Noonan  
Paul Norman Ph.D.  
Northport Pottery  
Ms. Cynthia Nowak  
Dr. and Mrs. C. Thomas Nuzum  
Jane and Jason Nuzzo  
Patrick and Amy L. O'Brien  
Ms. Elizabeth Och  
Pat and Marlene O'Connor  
Mrs. Janey Odell  
Amy Odgers  
Maria and Dave O'Donnell  
Dale and Sue O'Donnell  
Joseph Ohren  
Ms. Megan Olds  
Mr. and Mrs. David D. Olson  
Steve Olson and Lynn Wilsher  
Mr. and Mrs. Michael Oltersdorf  
Dr. Robert and Zibby Oneal  
Nancy and Bill O'Neill  
Ms. Ellen F. O'Neill

Mrs. Amy L. Oosterhouse  
Mr. and Mrs. William J. Orcutt  
Stephen and Ami Orr  
Kelly and Jeff Orringer  
Nate and Jenny Orsburn  
Oryana Food Cooperative, Inc.  
Mr. and Mrs. Robert E. Overmyer  
Ms. Marie Owen  
Mrs. Luvian Owens  
Russ and Jane Packard  
Dan and Mary Padilla  
John and Leslie Palmer  
Mr. and Mrs. G. Bruce Papesh  
John Parham & Dina Krois  
Mr. and Mrs. Keith E. Parker  
Patrell-Fazio Family  
Michael and Susan Patrick  
Bette and Dick Patton  
Ms. Lisa Pavlides  
Mr. and Mrs. Albert Pawlick  
Mr. Jerry R. Pearson  
John and Leslie Peck  
Mr. and Mrs. Henry Peet  
Ms. Linda Peppler  
Pepsico Silicon Valley Community Foundation  
Dr. and Mrs. Burton L. Perry  
Elmer and Ruth Peterman  
Thom and Rachele Peters  
Ms. Audrey Petersen  
Mr. and Mrs. John J. Peterson  
Mr. and Mrs. William Peterson  
Mr. Erik Peterson  
Mr. and Mrs. Frank Petrock  
Larry and Rebecca Peyton  
Tom and Christine Pfennig  
Christina Pfeufer  
Dennis Phillips  
Mary and Ben Phillips  
The Piskor Family  
Brian Farmer & Abigail Pohlonski  
Ron and Marilyn Pokrak  
Patricia Pollock and Mark Rodak  
Cindy and Ovide Pomerleau  
Mr. and Mrs. Stan Ponstein  
Thad and Nancy Popa  
Steven and Janet Popper  
Thomas S. Porter  
Barry and Susan Porter  
Mark and Manie Powell  
David and Laura Powers  
Larry and Lauren Prentice  
Mr. and Mrs. Thomas P. Price  
Mr. and Mrs. James D. Price  
Mr. Bill Pritchard  
John and Lyn Dolson Pugh  
Jim and Mary Pulsifer  
Mr. and Mrs. Jack S. Putnam  
Jack and Diana Putnam  
Jeff and Jane Puvogel  
Mr. and Mrs. Robert W. Quinn  
Royce Ragland and Ken Bloem  
John and Bonnie Raines  
Ms. Laura Ramus  
Mr. and Mrs. Wayne D. Randall  
Dr. Stuart C. Rankin





**Contributer (\$100 - \$249) cont.**

Bill Rastetter and Cary Weed  
James Rau & Cheryl Christoff  
Larry and Carolyn Rawsthorne  
Bob and Sally Ray  
Mrs. Charlotte Read  
Mr. and Mrs. Thomas D. Reay  
Steve and Connie Reddicliffe  
Mat and Nancy Reeves  
Jeffrey Reider and Chuck Otis  
Mr. and Mrs. Ronald L. Reimink  
Ellen and John Reister  
Mr. and Mrs. Scott Rempala  
Mr. and Mrs. Dewey J. Renneker  
Mark and Krista Rensland  
Gordon and Nancy Rettie  
Ms. Adrienne M. Reynolds  
Mrs. Ruth M. Reynolds  
Mark and Suzanne Reynolds  
Mr. and Mrs. Ronald G. Rhoads  
Ms. Mary L. Rhodes  
Mrs. Merrill Rich  
Ms. Patricia Richardson  
Rob and Marylou Riday  
Mrs. Barrie Riday  
Mrs. Louisa Ridgway  
Terry and Debra Riedinger  
Ms. Carol E. Rigg  
Bill and Coralyn Riley  
Mr. Bernard Rink  
Gary and Anita Risbridger  
Charles and Donna Ritter  
Mr. and Mrs. W. Scott Robertson  
Mr. William G. Rockwood  
Ann Rogers  
John and Lisa Rogers  
Steve and Sue Rohde  
Mr. and Mrs. E. David Rollert  
Mr. and Mrs. Stephen E. Root  
Mr. Greg Rose  
William and Pamela Rosenberg  
Cindy and Ken Rosiek  
Ms. Margaret Ann Ross  
Jennifer and Harry Rosser  
Mr. Matthew Rossetti  
Kay and Pete Rossiter  
Mike and Laura Rothermel  
Mary Cobb Rouseelot  
Mrs. Justina G. Rubner  
Running Dog Studio  
David and Lynn Ruschhaupt  
Mr. Kenneth Ryskamp  
Arnold Sameroff and Susan McDonough  
Ted and Sally Samples  
Dr. John R. Sanborn  
Mark and Mary Ellen Sankovitch  
Peter and Jennifer Scanlon  
Dr. and Mrs. David A. Scapini  
Mr. and Mrs. Charles B. Schaff, Jr.  
Mr. and Mrs. Peter H. Schaff  
Mr. and Mrs. Wendell D. Schaller  
Mr. Michael E. Scharpf  
Gerald Schatz and Barbara Conley  
Mr. and Mrs. Karl Schlabach  
Mr. and Mrs. James E. Schlueter  
Folkert Schmidt & Kathleen Sullivan

Mark and Susanne Schneider  
Mrs. Marilyn M. Schneider  
Michael and Betsy Schneider  
Mr. and Mrs. Edward D. Schocker  
Mr. and Mrs. Robert Scholz  
Jim and Margaret Schrimpf  
Richard and Nancy Schwab  
April and James Schwaegerle  
Jeffrey and Zane Schwaiger  
Mr. and Mrs. Benjamin P. Scott  
Mr. and Mrs. John A. Scott  
The Sehnert Family  
Jeff and Nita Send  
William and Judith Setterstrom  
Mr. and Mrs. Thomas A. Sexton  
Jack Seymour and Margaret Ann Crain  
Linda and Jim Shad  
Anne and David Shane+  
Elise Shatto  
Mr. and Mrs. Duane Shaw  
Mr. and Mrs. Donald Shaw  
Mrs. Catherine Sheppell  
Dale and Susan Sherby  
Mr. and Mrs. John A. Shilts  
Mr. and Mrs. Fred B. Shoaff, III  
Mr. John Shoemaker  
Mr. James C. Shook  
Mr. and Mrs. Michael Shupert  
Colleen and Bryan Sibthorp  
Tom and Diane Siebrasse  
Mr. and Mrs. Dan Sifferlin  
Dr. & Mrs. Daniel Silvasi & Family  
Mr. and Mrs. Clint A. Simko  
Mr. James R. Sitko  
Ted and Sherry Skinner  
Ted and Kelly Slater  
Ms. Anne Slater  
Sleeping Bear Noontiders  
Hamish and Beryl Small  
Mr. and Mrs. Larry L. Smith  
Mr. and Mrs. Ernest H. Smith  
Mr. W. Dale Smith  
Mrs. Betty W. Smykal  
Sharon and Robert Snell  
Daniel Snyder and Ann Rich  
Dick and Pat Solem  
Ms. Christine Sow  
Ms. Lisa Spaugh  
Mr. and Mrs. Joseph K. Spaulding  
Patrick and Katherine Spyke  
Drs. Beverly & R. Lawrence St. Clair  
Fred and Joyce Stackable  
Mr. and Mrs. Jerry J. Stanek  
Drs. Richard and Linda Stanford  
Bob and Laura Stapleton  
Mrs. Gloria L. Stapp  
Ms. Dorothy Stark  
Dr. and Mrs. Michael G. Steichen  
Mr. and Mrs. Barry Stein  
Dennis Marchese & Cheryl Stereff  
Laura Sterkel & Rob Wetherald  
Lanny and Lea Ann Sterling  
Scott and Ann Stewart  
Mr. and Mrs. Ulrich A. Straus  
Mr. Timothy L. Strawbridge  
Ms. Linda Stremmel

Bill and Gail Strietmann  
Dr. and Mrs. Stephen Strobel  
Ms. Barbara Stuber  
Dr. and Mrs. Spiridon N. Suciu  
Mr. and Mrs. Gregory Suhajda  
Bill Sulau & Kay Nolen  
Mr. and Mrs. Raymond D. Sullivan  
Mr. and Mrs. John F. Sullivan  
Mrs. Evy K. Sussman  
Terry and Susan Sutherland  
Mr. and Mrs. Thomas Sutter  
Marge and Lew Sutton  
Wayne and Pat Swallow  
Mr. and Mrs. Daniel D. Sweeney  
John and Ciss Sweeney  
Mary and Bill Swift  
Ms. Nancy A. Swift  
Mr. and Mrs. Stephen Syrjamaki  
The Taglauer Cabin  
Mrs. Phyllis L. Takayama  
Laurence and Patricia Tarini  
Mr. and Mrs. William M. Taylor  
Mr. Hans Teichman  
Mr. William Thacker  
The Gunzenhaeuser Family  
Paul Thielking  
Mr. and Mrs. Jim Thomas  
Bert and Diane Thomas  
Ms. Susan M. Thomas  
Ms. Joyce Thompson  
Ms. Kate Thornhill  
Mr. and Mrs. William A. Thurner  
Mr. and Mrs. John Tichon  
Mr. and Mrs. Alfred Torres  
Terry and Duane Townley  
Erin Trame and Carrie Turner  
Ms. Kyle Trevas  
Ms. Erica Trierweiler  
Trish's Dishes  
Adam and Briana Truckey  
Mr. and Mrs. Tom Trumbull  
Mr. and Mrs. Dan Tubbs  
Robert and Anne Tucker  
Ms. Dori Turner  
Daniel and Lisa Turner  
Kevin Uhl and Hannah Israel  
Mr. and Mrs. Frank Ulrich  
Dr. John Ulrich, Ph.D LLC  
Mrs. Carole A. Underwood  
Mr. and Mrs. Frans Van Liere  
Tom and Alice Van Zoeren  
Mr. and Mrs. Wilson VanArsdale  
Scott and Marie Vander Linde  
Mr. Douglas L. VanDyke  
Mr. and Mrs. Michael A. VanRiper  
Dr. and Mrs. Samuel Vasiu  
Paula and Elena Vaughan  
Ms. Lois Veenstra  
Mr. Theodore J. Vogt  
Mr. and Mrs. Ralph von Walthausen  
William and Pamela Vredevoogd  
John and Carrie Wadas  
Tim and Karen Wade  
Mr. and Mrs. Brent Wadsworth  
Ms. Leslie J. Wadsworth  
Mr. Jon F. Wadsworth

Peter and Diana Wagner  
Ms. Kathleen M. Wagner  
Judy Wagner  
Mr. and Mrs. John W. Waldrop  
Ms. Lorri Wallet  
Bob and Cyndy Walsh  
Julie Walter  
Ms. Evie Waltz  
Mr. and Mrs. William J. Warren  
Noreen and Stewart Warren  
Ms. Susan H. Wasserman  
Waste Management  
Ms. Elizabeth L. Waters  
Mr. and Mrs. David M. Watt  
Price and Jane Watts  
Mark and Bill Swift  
Ms. Mary K. Weadock  
Mrs. Alice B. Weaver  
Ms. Jill Webb  
Ms. Tamara L. Weber  
Rick and Gail Webster  
Mark and Lee Weick  
Stephen and Kathleen Weller  
John and Karen Wells  
Deborah E. Welsh  
Mr. and Mrs. Peter F. Westerman  
Mr. and Mrs. Bruce J. Westover  
Whaleback Inn  
Dennis and Erin Whalen  
Mr. Gil Wheeler  
Mr. Gilbert H. Whelden, Jr.  
Chuck and Janet Whetsel  
White Family Partnership  
Mr. and Mrs. Bill White  
Mary Jo White & John Muenzer  
Steve and Amy Whitlatch  
Dr. and Mrs. Michael & April Wiater  
Ms. Kathleen Wichman  
Mr. and Mrs. John Wickland  
Ms. Candace Wiebener  
Ms. Linda Wiersema  
Mr. and Mrs. Timothy C. Wilcox  
Mr. Thomas Wilcox  
Mr. and Mrs. Don G. Wilcox  
Stephen F. Wilczewski  
Wildtype Design, Native Plants & Seed, Ltd.  
Dr. and Dr. Michael A. Willett  
David and Roberta Williams  
Mr. and Mrs. John R. Williams  
Mr. and Mrs. Dennis M. Williams  
Thomas and Sarah Williams  
Williams and Bay Pumping Services  
Robert T. Wilson & Sandra Smith  
Rick and Barb Wilson  
Mr. and Mrs. Richard N. Wilson  
Mike and Ruthanne Wilson  
Ms. Kathryn I. Wilson  
Mr. and Mrs. Mark H. Windemuller  
Mr. William P. Winslow  
Jack and Carol Wixted  
Pete and Ginna Woessner  
Dr. Randall Wolthuis  
Ms. Shirley J. Woodard  
Dr. and Mrs. James S. Woodburne  
Dick and Jane Woolsey

Mr. and Mrs. John Woomer  
Mrs. Marilyn Wotring  
David D. Wright & Julie Quinn  
Curt and Cindy Wright  
Mr. Eric Wucherer  
Jeff Wuepper  
Marcy Wydman  
Ms. Barbara Wydman  
Mr. and Mrs. Jeffrey Wyler  
Jim and Kit Wysor  
Mrs. Agnes L. Yalda  
Mr. Al Yougel  
Linda and Steven Young  
Fred Young and Julie Youmans  
Jerry and Barbara Young  
Dr. and Mrs. Ivars Zadviskis  
Mrs. Ashley Zak  
Philip and Shelley Zalewski  
Ms. Corinne Zgliczynski  
Donald and Beth Ziemann  
Robert and Gayle Zimmerer  
Scot and Elizabeth Zimmerman  
Mr. John C. Zimmerman  
Marc and Imogene Zimmermann  
Miss Mary Helen Zink  
Mr. and Mrs. John C. Zink  
Dr. Birgit Zipser  
John and Sheri Zoeller  
Mrs. Mary Ellen Zokas  
Mr. and Mrs. Dan Zolik  
Bill Zolkowski and Susan Hawley  
Dr. and Mrs. Robert Zondervan  
Rick and Terry Zweering  
Gerard and Barbara Zyren

**Supportor (\$60 - \$99)**

Anonymous (3)  
Mr. Steven Ald  
Mr. and Mrs. Richard W. Allan  
Mr. and Mrs. Enoch Anderson  
Ms. Virginia Lois Ardelean  
Jan and Robert Atallo  
Steve and Jackie Baase  
Mr. and Mrs. William A. Bannasch  
John and Dorothy Barker  
Greg and Chris Bassett  
Mr. and Mrs. Gerald G. Battle  
Jeffrey and Elizabeth Bauer  
John and Rebecca Bercini  
Bill and Carole Betts  
Greg Binsfeld  
Mr. and Mrs. Robert H. Birch  
David Blackmore & Barbara Worland  
Theron and Cynthia Blakeslee  
Peter and Joan Blos, Jr.  
Mr. and Mrs. Milton C. Boesel, Jr.  
Mr. Charles M. Boesel  
Mr. and Mrs. John W. Bogley  
Mr. and Mrs. John C. Bollman  
Mr. and Mrs. Paul L. Bolmer  
Merri Lynn Bouckaert & Paul Peschel  
Ms. Mary Bouwkamp  
Ms. Barbara Boyer  
Faryl Boyl  
Mrs. Ruby Brach  
Mr. and Mrs. David Bradshaw

Mrs. Barbara C. Braly  
Mr. and Mrs. Thomas G. Briggs  
Bright Sky Properties LLC  
William and Alta Brown  
Dr. Kersti and Mr. Daniel J. Bruining  
Mr. and Mrs. Thomas B. Brush  
Beverly Bryce  
Mr. and Mrs. Timothy J. Bugenske  
Mr. John R. Burdick  
Mr. and Mrs. Marlin G. Bussey  
Jackie Cantalupo  
James C. Carpenter & Rebecca Reynolds  
Mr. and Mrs. Robert Carroll  
Paul and Susanne Cartman  
Mr. and Mrs. Thomas H. Cartwright  
Mrs. Sally Casey  
Mrs. Jean A. Castle  
Mr. David Cavera  
Mr. and Mrs. Fred Cepela  
Mr. and Mrs. Michael L. Chamberlin  
Mr. Joseph Cherup, Jr.  
Jim and Gwen Chesterfield  
Ms. Bobbi Ann Chilson-Bowlby  
Marc and Jenny Chipault  
Mr. and Mrs. Frank C. Clark  
Katie Cleaver & Peter Crabtree  
Mr. Robert Cleveland  
James E. Cleworth  
Jim and Karen Click  
Mr. and Mrs. Frank V. Cliff, Jr.  
Drs. Steven and Molly Cline  
Joe and Barbara Coffer  
Mr. Kyle B. Connolly  
Mr. and Mrs. Craig Cook  
Ted Cornell and Nancy Schwartz  
Mr. and Mrs. Robert Craig  
Karen and Wallace Crook  
Laura Crower  
Crum & Forster  
Renaee and Dan Cubbin  
William and Deborah Dacey  
Connie Dahm  
Mr. and Mrs. Howard Datema  
Robert and Kathy Davidson  
Stephen and Consiglia Dawson  
Mr. and Mrs. Joseph P. Day  
Mr. and Mrs. John W. Dean  
Charlie DeSando and Ellen Gilligan  
Ms. Caroline Dieterle  
Matthew DiGiovanni & Lauren Oates  
Mark and Kathy Dixon  
Dr. and Mrs. Stuart L. Doneson  
Mr. and Mrs. Falk Dorn  
Mr. Frederick Dose  
Barbara and Barry Dove  
Ms. Kathy Dowe  
Mrs. Nancy D. Downs  
Stephen and Michelle Doyle  
James and Kelly Doyle  
Bill and Peggy Driehorst  
Mrs. Bette D. Dugger  
Andra and Olivia Dupont  
Russell Dzuba and Karen Kirt  
EA Companies, Inc.  
Mr. and Mrs. Robert C. Edmundson  
Mr. and Mrs. Thomas M. Egan

Mark Eidelson and Caryl Markzon  
Mr. and Mrs. John A. Ellis  
Mrs. Carol Y. Emens  
Alaine Emens and Jackie Fields  
Mr. Lawrence L. Epple  
Ms. Sally M. Evaldson  
Mr. and Mrs. Peter W. Fabien  
Ms. Diana Faulhaber  
Mr. Robert W. Faull  
Mrs. Mary C. Fay  
Ms. Freda K. Flerlage  
Mr. and Mrs. John T. Flynn  
Bob and Sandra Foote  
Mr. and Mrs. Ronald E. Fornowski  
Mr. and Mrs. Douglas J. Freeman  
Tom and Molly Freeman  
Mrs. Kathryn Frerichs  
James, William & George Gaggos  
Dr. Bruce Galler  
Al and Karen Gallup  
Ms. Gloria Garrett  
Mr. and Mrs. Lewis G. Gatch  
Paul and Ruth Geil  
Mr. John Geoghegan  
Ms. Mary Gibb  
Mr. and Mrs. John E. Gideon  
Carl and Marsha Giroux  
Mr. and Mrs. Richard F. Glennon  
Mr. Richard Golab  
Matthew and Nora Goodell  
Mr. and Mrs. Jay Goodman  
Mr. and Mrs. Bill Goshorn  
Mr. and Mrs. Thomas Green  
Elinor Greener & Cynthia G. Theodoros  
Mark and Marie Greenman  
Ken and Joyce Greywall  
Rick and Lynn Grodek  
Thomas Guback & Sylvia Linde-Guback  
Benjamin Hamilton & Kristie Bey  
Mr. David J. Hamilton  
Mr. Steve Hammond  
Ms. Joan Hardenbrook  
Mr. and Mrs. Dan S. Harkness  
Mr. and Mrs. Michael Hartings  
Mr. and Mrs. Keith Hartwell  
Ms. Gail Hastings  
Deborah Hecht and Joseph Falik  
Mrs. Elisabeth Heikel  
Mr. and Mrs. Ward Heine  
Maureen and Jens Hensel  
Mr. and Mrs. Robert J. Herber  
Mr. Joseph W. Heringlake  
Skip Hibbard & Nancy Elkind  
Ms. Mollie Hilliard  
Bob and Jane Holdeman  
Craig and Pat Holmes  
Bill and Barb Horning  
Ms. Heather Huffstutler  
Ms. Cheryl Hutchings  
Illinois Tool Works Foundation  
Michael and Susan Jacoby  
John E. Johnson  
J. Kay Johnston & Jeff Sanborn  
Mr. and Mrs. Gregory A. Johnstone  
Douglas and Ann Julien  
Mr. and Mrs. Allen S. Juris

Mr. and Mrs. James H. Kabcenell  
Ed and Jackie Kagan  
Mr. and Mrs. Chad Kahler  
Joan Kalchik & Michael Tenbrock  
Mr. Jonathan Z. Kamholtz  
Mr. Michael J. Kane  
Christopher Kantner & Cynthia Burger  
Bonnie and Dick Kay  
Mrs. Jane Keen  
John and Lana Keith  
Mrs. Anne W. Kelly  
Janet Kelman and David Rein  
Edward and Dulce Kiessel  
Gerald and Michaline Kilts  
Mr. Richard L. Kirby  
Mr. and Mrs. David Kirshenbaum  
Mr. and Mrs. Russell R. Kirt  
Mr. and Mrs. Thomas A. Klinefelter  
Dr. and Mrs. Henry Klugh  
Mr. and Mrs. John J. Konkal  
Mr. and Mrs. Bryane E. Kowalewski  
Gerald Kowalski  
Mr. and Mrs. Robert A. Krist  
Gene and Joan Kufskie  
Marjorie and Terry Kukor  
Robert Kurtz and Molly O'Toole  
Dr. and Mrs. Sander A. Kushner  
Ms. Diane M. Lane  
Dick and Susan Lang  
Mr. Bayard F. Lawes  
Ms. Anne P. Layman  
Steven Lee and Julie Tarr  
Dr. Jeffrey G. Leflein  
Mr. David Lerner  
Mr. and Mrs. Alfred J. Levanen  
Mr. and Mrs. Gene Lewis  
Mr. and Mrs. Gerald Lievois  
Mr. and Mrs. David L. Lillie  
Ms. Nancy J. Lindeman  
Carol Lingman  
Maya K. Link  
Art and Mary Link  
Ann Littlefield  
Ms. A. Catherine Look  
Ms. Kathleen Lubanski  
Mr. Kirk A. Lutz  
Dr. James and Barbara Mahan  
Ms. Judy Malburg  
Maple Lane Motel and Resort  
Mr. and Mrs. Thomas S. Markus  
Matt and Cindy Marsh  
Mark and Beth Martin  
Mrs. Gloria M. McClay  
Jill and Mike McDonnell  
Mr. Mike McKeough  
Mr. Campbell McLeod  
Mr. and Mrs. Allan F. Meyer  
Amy Middleton & Therese Durkin  
Mr. and Mrs. Peter Miller  
Mrs. Susan Miller  
Rick and Anne Miller  
Mr. and Mrs. R. John Miner  
Harreitt and Ralph Mittelberger  
Stephen and Amelia Moore  
Mr. and Mrs. Kevin D. Moran  
Dave and Joy Morgan





Supportor (\$60 - \$99) cont.

Greg and Beth Moross  
Howard and Susan Mueller  
Mr. Glenn Muhr  
Pat and Meridith Mulcahy  
Mr. and Mrs. Roger L. Mulder  
Sharon Murphy & Sharon Montonye  
Mr. and Mrs. Donald H. Myers  
Robert and Jane Neuharth  
Mr. and Mrs. John G. Neuman  
John Niles  
Mr. and Mrs. James R. Nuveman  
Ms. Majel C. Obata  
Mr. and Mrs. James Oliver  
Ms. Elaine Oliver  
Mrs. Nancy W. Olsen  
Mr. and Mrs. Robert E. Olson  
Omena Women's Club  
Katherine and Michael O'Reilly  
Jane and Pat O'Rourke  
Karen and Tom Oswald  
Mr. and Mrs. Christopher C. Painchaud  
Jann Parsons and Tim Ascroft  
Wendi and Jeffrey Peake  
Terry and Kathleen Pennell  
Mr. and Mrs. William D. Perkins  
Fred and Nancy Perzanowski  
Dr. Glen Peterson  
Steve and Bonnie Plamondon  
Chris and Kathryn Preston  
Mr. Larry Price  
Mrs. Bette M. Puschel  
Dr. John Putz  
R. Douglas and Thressa Race  
Peg and Don Ramsdell  
Mr. and Mrs. Frederick W. Reeves  
Thomas and Nancy Reichard  
Dale and Jane Rhoades  
Jim Ristine & Mardi Black  
Chuck and Kay Robertson  
Mr. and Mrs. Tim C. Rod  
John Roh and Susan Bromley-Roh  
Mr. and Mrs. Thomas L. Rugh  
Rustic Roots  
Ms. Ariel Ruth  
Ms. Sarah Rutherford  
Mr. James E. Ryan, Jr.  
Mrs. Rosalind Ryant  
Mrs. Sally Sanfield  
Mr. and Mrs. Larry D. Sanford  
Saving Birds Thru Habitat  
Andy and Susan Schaedel  
Robert and Elaine Schneider  
Mr. Russell A. Scholtens  
James Schwantes & Judy Reinhardt  
Rick and Karen Seefelt  
Alice Seppanen  
Kevin and Kimberly Shea  
Ann and Jack Sherman  
Mr. Michael S. Sherry  
Robert and Linda Shirkey  
Sisson's Main Street Specialties  
Mr. and Mrs. Mark R. Smith  
W. Dale Smith  
Ms. Marjorie Smith  
Mr. Greg Smith

Randy and Marianne Smith  
Ms. Mary Socha  
Marcia and Joe Sojkowski  
Mr. William Somerville  
Ms. Elizabeth Sonnega  
Tim Sparling and Lynne Tobin  
Jane and Gordon C. Spink  
Mr. and Mrs. Donald E. Spinniken  
Ms. Beverley Sporck  
Mrs. Theresa J. Stamos-Underwood  
David and Laurie Stevens  
Mrs. Barbara R. Stevenson  
David and Toni Stevenson  
Todd and Janet Stone  
Mr. and Mrs. William B. Strubbe  
Mr. Jerry Sura  
Julie Sulfin and Jan Roddy  
Bob and Jean Swisher  
David Tabolt & Lisa Genesen  
John and Marcia Teichman  
Tim and Trish Thane  
Mrs. Virginia A. Thompson  
Terry and Shannon Tighe  
Timberlee Property Owners, Inc.  
Andrew and Amy Topper  
Mr. George D. Townsend  
Tru North Landscaping LLC  
Ms. Deborah Van Vechten  
Ms. Susan M. Vanaelst  
Rhys VanDemark & Kathi McGookey  
Mr. and Mrs. Wayne VanderPloeg  
Dr. and Mrs. James P. Varley  
Mr. Raphael L. Vermeir  
Thom and Jeannine Villing  
John and Marsha Vingsness  
Mr. and Mrs. Peter Visser  
Mr. Frederick von Stade  
Doug and Betty Wallace  
Dick and Karen Warren  
Ms. Tani Watkins  
Russell and Dolores Welchli  
Honorable Martha Wentworth  
Mrs. Marilyn G. Wheeler  
Bob and Anne White  
Ms. Ginger Wilber  
Mr. and Mrs. Stephen Wilkerson  
Ms. Myrna Williams  
Ken and Brigid Willis  
Mrs. Jane Wood  
Dr. John R. Woods  
Ms. Elli A. Workum  
Mr. and Mrs. Wayne Wunderlich  
Ms. Wendy Jo Wyatt  
Chad and Virginia Yerrick  
Ms. Karen E. Zerrenner  
Miss Jeanie Ziebell

Subscriber (Under \$60)

Anonymous (16)  
Ernie and Jennifer Abel  
Mr. and Mrs. Thomas Abraham  
Mr. and Mrs. Werner Adamofsky  
Mr. and Mrs. David E. Adams  
Jeffrey and Susan Adams  
Ken, Cheryl and Zach Adams  
Arnold and Terrie Allemang

Mr. and Mrs. George D. Allen  
Benjamin and Ginny Allen  
Mr. and Mrs. Bruce Allen  
Ed and Jo Allen  
Diane and Don Allington  
Alpha Delta Kappa  
Valerie and Gary Anderson  
Ms. Susan Anderson  
Mr. and Mrs. Philip R. Andrus  
Mr. and Mrs. Larry L. Andrykovich  
David and Kristen Arends  
Mrs. Mary Ann Arvo  
James E. Ashmore  
Kevin and Michele Aucello  
Larry and Maureen Ayotte  
Mrs. Gwen Baarstad  
Miriam Nancy Taschner Bach  
Robin and Chris Bahle  
Mr. and Mrs. Forrest D. Baillie  
Ms. Sarah Baldwin  
Gregory and Michele Ballein  
Mr. and Mrs. Daniel J. Barbulesco  
Mr. and Mrs. James V. Bardenhagen  
Bob and Maryann Barnes  
James and Brenda Barnes  
Ms. Christine Barnowski  
Ms. Cheryl Bartz  
Mr. and Mrs. Bryan Barus  
Jodie Bathish  
Mr. and Mrs. Terry Baumann  
Dr. Rebecca Beach  
Duncan and Dana Beagle  
Sue and Dan Beardslee  
P. James & Marianna Beaubien  
Brian and Riley Beck  
Susan Ann Beebe  
Dr. and Mrs. Patrick J. Beecher  
Dr. and Dr. Andrew M. Behler  
Ms. Susan Lawler Bejaoui  
Wendy Bell  
Tricia and James Belletire  
Mr. and Mrs. William Bellinger  
Robert and Carol Bender  
Mr. and Mrs. Thomas A. Bennett  
Hugh and Catherine Bennett  
Mr. and Mrs. Loren B. Bensley, Jr.  
Blake Bernard  
Sally M. Bersot  
Jacqueline Berz and Janet Stutzman  
Ms. Genevieve Beuerle  
Ms. Sandra M. Biagini  
Gary and Wendy Bice  
Ms. Heidi Biederman  
Tom Binet and Danielle Jensen  
Ethel and Keith Birchler  
Mr. and Mrs. J. Randall Birndorf  
Thomas O. Bisbee & Laura A. Johnson  
Jeffery and Suzanne Bischoff  
Jeff and Cindy Black  
Mr. and Mrs. Eric Blakely  
Mr. and Mrs. Paul Blakeslee  
Mr. William J. Blanton  
Mr. and Mrs. Joseph Blondia  
Ken and Ann Bloomquist  
Ms. Tena Bobrin  
Mr. and Mrs. Stephen Bochenek

Rick and Kat Bodette  
Tim Boland & Laura Coit  
Ms. Luise Bolleber  
Ms. Becky Bond  
Charles and Janis Bond  
Mr. Robert H. Bonner  
Warren and Beverly Boos  
Ms. Kim Boose  
Mr. and Mrs. Robert K. Bosch  
Darcy R. Bowden  
Mr. John B. Bowers  
Caroline, Donna and Curt Braden  
Mrs. Helen A.P. Bradley  
Mr. and Mrs. Mark Brant  
Roger D. Bratcher  
Jim and Barbie Breitenbach  
Michael and Joan Brennan  
Mr. and Mrs. Robert Brenner  
Ms. Paula M. Briggs  
James and Vicki Brinkman  
Austin and Lucy Brooks  
Jack and Jenny Brown  
Jeffrey Brown  
Mr. Michael Brown  
Mr. and Mrs. Thomas A. Bruce  
Mr. and Mrs. William Brunelle  
Joan and Andy Brush  
Mrs. Joan E. Buchman  
Jim and Kitty Buck  
Carl and Denise Bulat  
Mr. and Mrs. George R. Bunn, Jr.  
Ron and Jeany Burkhart  
Ms. Peggy Burman-Lootens  
Bill and Janet Burmeister  
Mr. and Mrs. James F. Burnham  
Herb and Mickey Burns  
Mrs. G. Jackson Butterbaugh  
Nancy and Milyn Byers  
Tim Calkins and Carol Saltoun  
Catherine Cambell and Joe Fellows  
Ms. Ellie Canfield  
Mr. and Mrs. H. James Carleton  
Eric and Jenny Carpenter  
Ms. Rosemary Cary  
Mr. William S. Casier  
Mr. Chas Catherman  
Charles and Nancy Chace  
Ms. Leah Chapman  
Mr. Clyde P. Chard  
Jim and Kay Charter  
Chateau Fontaine  
Ms. Sarah Chenault  
Chicago Golf Club  
Mr. and Mrs. Alfred F. Chimoski, Jr.  
Ms. Sandra J. Chumack  
Ms. Deborah Ciavattone  
Ms. Kathleen E. Cigan  
Mr. and Mrs. Harold W. Clark  
Mr. and Mrs. Horace H. Cobb, Jr.  
Gail E. & Steven L. Cobb  
Pamela Stuber and Tony Coble  
Jim and Karen Coble  
Mr. and Mrs. Robert Cohen  
Roberta and Allan Cohen  
Joseph and Carey Colburn  
Ms. Edith A. Cole

Ronald and Sally Cole-Misch  
Gigi Collins  
Ms. Peggy Collins  
Ms. Cheryl Conklin  
Ms. Melissa M. Conroy  
Ms. Suzette Cooley-Sanborn  
Mr. and Mrs. John Coombe  
Mike and Karen Coquillard  
Peggy Core  
Mrs. Dorothy J. Coulter  
Mr. and Mrs. Jerome P. Cousino  
Mr. Ronald L. Cramer  
Ms. Kathleen Crane  
Charles and Susan Crawford  
Ms. Jane Crowner  
Mr. and Mrs. Robert Cullum  
Ms. Mary Cusack  
Mr. and Mrs. William G. Cutler  
Gayle Dalrymple  
Richard and Mary Daly  
Michael Danaher  
Alexandra and Francis Darigan  
James and Kathleen Datema  
Mr. Steve Davidek  
Bob and Marie Davidek  
Robert and Jacqueline Davidson  
Ms. Marjean W. Davis  
Aaron and Janeene Davis  
Christopher and Diana Davis  
Maribeth De Meester  
James and Patricia De Mond  
Mr. and Mrs. Graydon DeCamp  
Mr. and Mrs. Rauland F. Deeg  
Ron and Rebecca Deering  
Mr. Paul E. deHeer  
Mr. and Mrs. Cormac B. Delaney  
Ms. Dorothy M. Delehanty  
Dennis Hurst & Associates  
Mr. and Mrs. Kenneth L. Denoyer  
Shawn and Tricia Denton & Family  
Cathy Deschenes and Nick Pantazis  
Ms. Margaret A. Detrick  
Mr. and Mrs. Roland DeYoung  
Mrs. Rita M. Dick  
Mr. and Mrs. Charles W. Dickerson  
Mr. and Mrs. John F. DiClemente  
Richard and Janette Dilley  
Ms. Carolyn Ives Dingman  
Ms. Julie A. Dirksen  
Mr. Joseph E. Dlugopolski  
William and Beverly Dodge  
Carol Doerpholz  
Robert and Lorli Dolson  
Ms. Carole Donaldson  
Donatic  
Mr. and Mrs. Andrew Dotterweich  
Mrs. Janet Dow  
Mr. Doug Dowdy  
Ms. Mia Drinan  
Ms. Alice Droeger  
Mr. and Mrs. Douglas S. Drummond  
Steve and Wendy Dumas  
Mrs. Lucille C. Dumbrell  
Arthur F. Dundon, MD  
Ms. Julie Dunfee  
Mr. and Mrs. Edwin R. Dunn

Mrs. Julia S. Dutton  
Ms. Barbara A. Duvall  
David Early & Anne Marie Oomen  
Terrell and Pat Ebright  
Paul and Shirley Edmond  
Mr. David W. Egeler  
Ms. Gayle E. Egeler  
Mrs. Marion E. Engelhart  
Chris and Eileen Epley  
Gerri Erickson and Margaret Platner  
Roy and Alice Erickson  
Rob Stow and Jeremy Evans  
Mr. and Mrs. Roger Faber  
Ms. Margaret Fako  
Mr. Jonathan Falk  
Ms. Susan Grogan Faller  
Ms. Edith Farnham  
Mr. and Mrs. Douglas S. Faulkner  
Michael and Karen Fazioli  
John and Joanne Feher  
Ferndale HS Sunshine Fund  
Ms. Stephanie J. Fiebing  
Mrs. Judith M. Filice  
Peter and Cassidy Fisher  
Dr. James Flaggett  
Mr. and Mrs. Terence R. Flanagan  
Nick and Elaine Fleezanis  
Mr. and Mrs. James Flore  
Mr. and Mrs. Neil Flynn  
Ms. Phyllis Foley Wanroy  
Mr. and Mrs. Fred C. Ford  
Glenn and Kim Ford  
Robert and Marcy Ford  
Ms. Margaret J. Forgione  
Jeff and Nancy Forrest  
Gary and Mary Jo Fralick  
Lynn and Vicki Francis  
Laura Franseen and Norman Kjome  
Ms. Judy L. Frederick  
Barney and Evelyn Freeman  
Mrs. Karen K. Frook  
Ms. Cheryl Gain  
Mr. and Mrs. Gary J. Gallup  
Ms. Julie Ganz-Waple  
Mr. William Y. Gard  
Mrs. Jacqueline Gazoul  
Ms. Laura Geisel  
Sharon Lynn George  
Jeff and Julie Gerstenberger  
Ms. Marge Geukes  
Irene and Alex Gherlan  
Mr. and Mrs. Charles A. Gilfeather  
Ms. Janice L. Ginger  
Mr. Ralph Ginocchio  
Michael and Lena Gionnette  
Mr. and Mrs. Lloyd N. Girbach  
Glazier Persik Beach Association  
Mr. Gerald Glencer  
Mr. and Mrs. Dennis Golec  
Ms. Bonnie Gonzales  
Don and Suzy Goodman  
Mr. and Mrs. Philip W. Goodspeed  
Mr. and Mrs. Helmut P. Goral  
Lisa and Randy Goranson  
Chris and Shannon Gordon  
Dr. and Dr. Daniel W. Gorenflo

Ms. Barbara Graham  
Mr. and Mrs. James R. Grant  
Ms. Diane Grauer  
Ms. Norma J. Gray  
Patricia Green & Joel Goldberg  
Bridget Greenan and B. Regan Patrick  
Richard and Patricia Greene  
Jane Greiner  
Ruth and James Grey  
Mr. and Mrs. Douglas K. Griese  
Mr. and Mrs. Robert C. Grigereit  
Margaret Groeber and Peter McCann  
Mr. Tom Grogan  
Mr. Matthew Groleau  
Mr. and Mrs. Berndt H. Gros  
Richard and Ann Grzeskowiak  
Ms. Lynn Gumina  
Gun Plain Fire Department  
Mr. William E. Habich  
Mr. and Mrs. Ronald L. Hackleman  
Mr. and Mrs. Eugene N. Hadjisky  
Ms. Mary Hagan  
Mr. and Mrs. Peter V. Hall  
Gloria Halligan  
Mr. and Mrs. James A. Ham  
Mr. David A. Ham  
Mr. and Mrs. John J. Handloser  
Mr. and Mrs. James A. Hands  
E. Jay and Mary Lou Hansen  
Ms. Diane K. Harmon  
Mr. and Mrs. James R. Harrelson  
Ms. Nancy Harrigan  
Ms. Deborah L. Harrison  
Cyndie and Jim Hartmann  
Mike and Sandy Hartwell  
Mr. Dick Hasbany  
Ms. Joanne Hass  
Mr. David Hawkins  
Mr. and Mrs. Michael D. Hayes  
Dennis and Eileen Hays  
Mr. and Mrs. Clarence E. Heerema  
Jim and Jacquie Heidamos  
Howard and Kathleen Heinzel  
Jeff and Debbie Heitzman  
Mr. Thomas Heller  
Mrs. Jean G. Hengelbrok  
Paul and Meredith Henley  
Ms. Christy Hennessey  
John and Sandy Henry  
Mrs. Bernice Herman  
Ms. Jeanette Herold  
Mr. and Mrs. Charles W. Herweh  
Mr. and Mrs. William A. Heston  
Judy Hicks & Eric Hespeneheide  
Mrs. Barbara Hildner  
Anne and Tony Hill  
Richard and Elizabeth Hill  
William and Sue Hill  
Rudy and Mary Jo Hirt  
Lois Hoag  
Ms. Pat Hoekstra  
Judith Hoerner  
Mr. Timothy C. Hoerner  
Stephen and Susan Hoffius  
Ms. Natalie Holcomb  
Herb and Jean Holdwick

Ms. Jane L. Hollon  
Mr. Henry Holt, III  
Ken and Carol Holt  
Mr. and Mrs. John Honney  
Ms. Terri Hoog  
Mr. Adam Hoog  
Tom and Patty Hopcian  
Dr. John M. Houk, Jr.  
Mr. Leonard Hower  
Mrs. Allison G. Hubley-Patterson  
Ms. Hester A. Hull  
John and Jean Humble  
Mr. and Mrs. Kenneth P. Hurlin  
Mr. and Mrs. Dennis Hurst  
Dr. Douglas B. Hutchison  
Christopher and Rebecca Hyman  
Mike and Carol Hypio  
Bart and Gail Ingraham  
Thomas and Lynn Irvine  
Dave and Marilyn Jachalke  
Mr. and Mrs. James G. Jackson  
Mr. Clifford Jacobs  
Mr. and Mrs. Bruce C. Jacobsen  
Mrs. Josephine M. Jahoda  
Mrs. Nadine E. Jakobowski  
Tom and Barbara Jamison  
Mr. and Mrs. Chet Janik  
Paul and Barbara Janowiecki  
Mr. and Mrs. William E. Jansen  
Mr. and Mrs. Martin G. Jelinek  
Mary Jessup  
Ms. Debbie Dwyew Jewett  
Bob and Karen Johnson  
Mr. and Mrs. Edgar F. Joppich  
Richard Jorgensen  
Greg Jorjorian and Marlys Conrad  
Mr. James E. Joyce  
JustGive.com  
William and Debra Kandler  
Ms. Ann Kassen  
Daniel Keaton and Jennifer Ardis  
Michael and Susan Kelley  
Mr. and Mrs. Ray D. Kellogg  
Allison and Alfred Kellogg  
Mr. and Mrs. Michael J. Kelly  
Mr. and Mrs. Kent B. Kelly  
Mr. and Mrs. Richard D. Kennedy  
Edward Kennedy & Nancy Reed  
Mr. Gregory Kenny  
Kentucky Leelanau Corporation  
Mr. Wendell Kewitch  
Ms. Beatrice Kimmerly  
Mr. and Mrs. John A. Kish  
Karen Klix and Kaetlin Breen  
Mr. and Mrs. David Knaggs  
Gregory Knapp  
Dr. Robert E. Knode  
Mr. and Mrs. Stephen W. Knoll  
Mr. and Mrs. William H. Knorp  
Mr. and Mrs. James Kobberstad  
Robert and Jane Kobylarz  
Mr. and Mrs. John G. Koelzer  
Ellen Kohler and Matt Cauchy  
Mr. and Mrs. Pete Kohrs  
Mr. and Mrs. John Korch  
Mrs. J. Patricia Krajewski





Subscriber (Under \$60) cont.

Mrs. Joan H. Kramps  
Mr. and Mrs. John G. Krause  
Ms. Katrina Krause  
Laura & Canon Krebehenne  
Mr. Tom Kuieck  
Jonathan Kunz and Pam Murphy  
Mr. Mike Kutas  
Jan Kyff  
Mr. and Mrs. Robert K. Laba  
Mr. and Mrs. James LaFave  
Gertrude Laferte & Helen Patterson  
Brian Lakey & Jennifer Gross  
Mr. and Mrs. Bruce Lance  
Mr. and Mrs. Jon M. Lane  
Marsha and Martin Langhorst  
Jerald and Beth Laperriere  
Mr. and Mrs. Stephen Later  
Sam and Robin Lawrence  
Crystal and Andrij I Lawrin  
Mr. Rob Lawson  
Mrs. Doreen A. Lawton  
Jeremy and Michele LeAnderson  
Jamie and Betty Leanderson  
Rick and Kristi Learnan  
Mr. and Mrs. Jeffrey S. Lee  
Mr. and Mrs. George Lee  
Ms. Christine Lee  
David Leece and Kathy Brewer  
Mr. and Mrs. William J. LeGray  
Leland Lodge  
Mr. Julius A. Lemcke  
Scott and Jeannine Leslie  
Mr. and Mrs. Terrence Lesniewicz  
Mr. and Mrs. James Lestikow  
Mr. Martin Leugers  
David and Kathy Leugers  
Mr. and Mrs. Sheldon Levin  
Ms. Susan J. Carlson Leyerdecher  
Mr. Eric Lezotte  
Mr. and Mrs. James Lindberry  
Mr. and Mrs. Roy Lindhardt  
Mr. Donald T. Lindquist  
Ms. Rose Mary Linzmeyer  
David and Barbara Lipinski  
James and Susan Lippert  
Mrs. Carol M. Liszewski  
Little Garden Club  
Little Traverse Lk. Prop. Owners Assoc  
Ms. Alice L. Littlefield  
Bob and Judy Lober  
Dr. and Mrs. F. Paul Logeman  
Eva Loomis  
Gregory and Loryn Lougheed  
Mr. Michael D. Loughman  
Ms. Elizabeth Lund  
Ms. Erika Lund  
Ms. Susan Lutes  
Ms. Maxine MacInnis  
Mrs. Esther M. Mack  
Daniel and Lillian Mahaney  
Ms. Kathleen Maka  
Kevin and Carol Makushik  
Frank and Kathy Maly  
Len Mankowski  
Mr. and Mrs. Dave Manthei

Mr. and Mrs. Kenneth Marek  
Ms. Susan Kay Maring  
Dr. Sarah Marossy  
Amy Marowitz & Ronald Kramer  
Mr. and Mrs. Robert D. Marth  
Douglas and Gayle Martinelli  
Mr. and Mrs. Douglas G. Mason  
Mrs. Norma L. Mateer  
Ms. Margaret C. Mathes  
Ward and Melissa Mathis  
Dr. Barbara S. Matson  
Gary and Rebecca McAdam  
Mr. and Mrs. James R. McCabe  
Mr. and Mrs. Kevin J. McCarty  
Mrs. Pauline R. McClure  
Steven and Susan McCord  
Carl and Virginia McCoy  
George and Sharon McCue  
Mr. Raymond McDonald  
Ms. Kate McElligatt  
Paul and Susan McEwen  
Jack and Becky McFellin  
Joyce McGonigle  
Mr. and Mrs. William McIlrath  
Mrs. Barbara L. McIntyre  
Dan and Lucky McKeen  
Mr. and Mrs. P.J. McNamara  
Bert and Marion Mecsey  
Mrs. Marguerite K. Meeker  
Ms. Elizabeth Meister  
Mr. Edward Merritt  
Ms. Marcia Metzen  
Mrs. Muriel Mikowski  
Mr. and Mrs. Larry J. Miller  
Stefan and Nancy Miller  
Bill and Sue Miller  
Evelyn and Al Millstein  
Gail T. Minneman  
Mr. David Mitchell  
Dan and Lynne Mixer  
Mr. and Mrs. Richard G. Moll  
Jim and Jen Molnar  
David Monforton and Anne Vanderkloot  
Ms. Donna Montague  
Mr. Dwight B. Moore  
Ms. Mary A. Moore  
Karen and Bob Moore  
Craig and Janet Moore  
Mr. and Mrs. Gerald R. Morawski  
Sam and Marg Morello  
Rebecca and Samuel Morley  
Mr. Harold Mosanko  
Ms. Anita W. Moss  
Mr. and Mrs. Willard L. Mudget  
Mrs. Mary Lou Mueller  
Susan Muenzer and Craig Nilsson  
Mr. Earl N. Muhleck  
Mr. and Mrs. Jerry K. Muir  
Bruce and Jane Mulkoff  
Mr. Cliff Murie  
Dr. Annie Murphy  
Ms. Michelle M. Nader  
Mr. and Mrs. Terry Naylor  
Mrs. Susan P. Neill  
Mr. and Mrs. Larry J. Nelson  
Network For Good

Mr. and Mrs. Alfred K. Neugebauer  
Kim Ng  
Judy and Mike Nold  
Mr. William Noling  
Timothy and Holly Norman  
Douglas Northrop and Michelle McClellan  
Ms. Barbara J. Nowinski  
Gen Obata and Rebecca Stith  
Ms. Susan Odom  
Susan Oleson  
Mr. and Mrs. George Olson  
Ms. Margaret Olson-Thomsen  
Shayla O'mara  
Sean and Cristin O'Riordan  
Ms. Ann Orwin  
Osborne Sales & Engineering, Inc.  
Ron and Sue Osgood  
Mr. Ernest Ostuno  
Ms. Kate McElligatt  
Ms. Margaret A. O'Toole  
Mr. Alvin Owsley  
Kim Para and Roxanne Shetler  
Mary Anne Parks  
Mr. and Mrs. Stanley J. Pasch  
Ms. Kathleen M. Patriarca  
Mr. Dan Patterson  
Ms. Kristie Patterson  
Mr. and Mrs. Thomas Pavelka  
Leigh & Linda Payment  
Mr. and Mrs. William F. Peck  
Ms. Bernadette A. Pelland  
Ms. JoAnna Pepe  
Mr. Blake Perrigo  
Dr. and Mrs. Nathaniel A. Peters  
Joel and Meggen W. Petersen  
Lissa and Dan Petersen  
Thomas and Jean Petersen  
Mr. and Mrs. Richard D. Peterson  
PG&E Corporation  
Ms. Holly Pharmer  
Ms. Sue Pierce  
Sally and Mason Pilcher  
Mary and Lowell Plotkin  
Ms. Susan Pocklington  
James and Gloria Pocock  
Mr. and Mrs. David M. Pohlod  
Edward Porter and Susan Mundt  
Mrs. Elizabeth Porter  
Matthew Posner & Marian Kronkowski  
Coe and Alyce Potter  
Ms. Julie Povoło  
Mr. and Mrs. Calvin Powell  
Ms. Theresa Premo-Peaphon  
George and Judy Prewitt  
Mr. Alfred Prizlow  
Mr. and Mrs. John J. Pruis  
Mr. and Mrs. Rodger H. Pruis  
Mrs. Marion K. Purdy  
Mrs. Frieda Putnam  
Mr. and Mrs. Mark Raaymakers  
Ms. Megan Rachford  
Mr. and Mrs. Bruce D. Ragan  
Ms. Jean M. Raiss  
Jorge and Elizabeth Ramos  
David and Linda Randel  
Ms. Betty C. Rashkow

Ken and Marcia Ray  
Mr. and Mrs. Larry L. Ray  
Ms. Susan Ray  
Paul and Phyllis Rebori  
Mr. and Mrs. David J. Reeves  
Mr. James N. Reimer  
Ms. Margie Rennie  
Anthony and Carol Repic  
Nate and Shelby Reynolds  
Mr. James L. Richardson  
Michael and Evelyn Richardson  
Ms. Julie Ridenour  
Ms. Trish Riley  
Larry Risbridge  
Mrs. Judith A. Ritter  
Ms. Kathleen R. Roberts  
Richard and Nancy Robertson  
Mr. Logan G. Robinson  
Pamela L. Roby & Michael Murphy  
Ms. Joanne Rochow  
Mr. Jeff Rodefeld  
Mike and Julie Rogers  
Dr. and Mrs. Albert D. Rollings  
Ms. Sharon Roney  
Clement and Lyla Rose  
Lisa Rose and Jacob Starner  
Daniel and Janet Rosemergy  
Brad and Annie Rosenberger  
Barry and Elyn Rosenthal  
Mr. and Mrs. William M. Rouse, Jr.  
Mary Ellen and Nathan Rowe  
Thomas and Laurie Rowley  
Bradley and Kathy Roynon  
Ms. Elaine Sabady  
Timm and Kathy Sahs  
Mary Ann Samyn  
Ms. Julie Sanco  
Mr. and Mrs. Joseph D. Sarafa  
Mr. and Mrs. Robert Sawyer  
Ms. Jane M. Saxton  
Mrs. Johanna E. Schaefer  
Mr. and Mrs. John J. Schaffer  
Kent and Maureen Scharff  
Mr. and Mrs. Timothy L. Schaub  
George and Judith Schneider  
Kurt and Gail Schultz  
Ms. Sarah Schultz  
Mr. Mark Schumacher  
Ms. Kimberly Schwaiger  
Mrs. Marilyn J. Scott  
Mr. and Mrs. Robert Segar  
Francis Seminski & Martha Croswell  
Lynne Serson  
Martin Settle and Deborah Bosley  
Mr. and Mrs. Geoffrey C. Shaffer  
Stephen Shank and Donna Snyder  
Ms. Margaret Shannon  
Ms. Judie Sharar  
Karen Sharkey  
Mr. and Mrs. Thomas Shaver  
Mrs. Mary A. Shiner  
Carol and Russ Shipley  
Mr. and Mrs. Greg L. Shoff  
Ms. Jean Vilter Short  
Mr. and Mrs. James R. Shuster  
Mr. and Mrs. Nicholas J. Sica

Mr. and Mrs. Edward H. Sichler  
Reid Sikes & Barbara Macke  
Ms. Norma Simmons  
Jodi Simpson  
Kim Sisco  
Bob and Randi Sloan  
Ms. Deborah Small  
Mr. and Mrs. Larry L. Smith  
Mr. Jon F. Smith  
Mr. and Mrs. Richard M. Snede  
Brian Sniokaitis and Maggie Smith  
Mr. and Mrs. Kenneth P. Snodgrass  
Larry and Greta Solomonson  
Mr. Charles Sommers  
Socrates and Gloria Souyias  
Jeff and Melissa Specht  
Kurt and Kristy Speece  
Mrs. Martha J. Speer  
Ms. Marion Spencer  
Brad and Karen Spencer  
Mr. and Mrs. Josh Sprague  
Mr. and Mrs. Jack St. John  
Mr. Dave Stachnik  
Tempie and Ed Stahlin  
Mr. and Mrs. Leo Stallman  
Stallman Chemical & Fertilizer  
Mr. and Mrs. William R. Steel  
Mr. David Steel  
Mr. and Mrs. Michael Steinberg  
Ms. Janet Stephenson  
Mr. Michael S. Stepka  
Ken and Bev Stepnitz  
Bob and Judee Sternberg  
Dale and Jeannie Stevens  
Ms. Deborah Stevens  
John and Margie Stoller  
Ms. Faye Stoner  
Mr. and Mrs. John Storey  
Fred and Mary Lu Strange  
Steven P. Strassburger & Mary Powers  
Mr. Thomas Streasick  
Steven and Cynthia Strong  
Dr. Nora Sugintas  
Mrs. Ann Sutherland  
Mr. Terrence M. Sutton  
Lynn Sutton  
Sue and Stefan Svensson  
Al and Mary Beth Swiderski  
Mr. and Mrs. David Taghon  
Ms. Joy M. Taylor  
Mac and Marian Tennant  
Mr. Bruce C. Thelen  
Mrs. Mary Ellen Thero  
Mrs. Susan M. Thoits  
Drs. Philip S. Thomas & Henrietta Barnes  
Don Thomas & Kathy Vezina  
Ms. Gabriella Thomas  
Ms. Jean Thomson  
Ms. Christine Tiderington  
Edwin S. Tobes  
Ms. Joan Todd  
Gloria Torello  
Sonya and Steve Tostige  
Mr. and Mrs. Mark Trapchak  
Greg and Margaret Travis

Vicki Trent  
Doug and Mary Lee Treter  
Mr. Joseph Tris  
James and Kay Trosko  
Mr. and Mrs. Ronald W. Tuck  
Nancy Turner and Edward Andres  
Mr. and Mrs. Gary B. Twomey  
Mrs. Mary Tyrrell  
United Way of Washtenaw County  
Mrs. Marion Unwin  
Dayna and Rody Valpey  
Mr. Douglas M. Van Zoeren  
Mr. and Mrs. John D. Van Raalte  
Ms. Anne C. Vekaryasz  
Brock and Elizabeth Veldman  
Joe and Sue Ventura  
Roger and Norma Verhey  
William and Susan Vogel  
Rolf and Mari Von Walthausen  
Justin and Jackie Vore  
Ralph and Carol Wagner  
Mark Wahda and Iwona Davidek  
Ms. Elizabeth Waieess  
Mr. Joe Walacavage  
John Walker  
Mr. and Mrs. Donald F. Wall  
Mr. and Mrs. Raymond J. Wall  
Priscilla Walmsley and Doug Kimble  
John and Gina Walsh  
Ms. Maria Walsh  
Ms. Mary Jo Walter  
Bob and Marsha Walton  
Mr. and Mrs. Paul Ward  
Ms. Lynne F. Waskin  
Mr. and Mrs. William Watson  
Jim and Sharon Wawrzyniak  
Mrs. Barbara G. Weber  
Mr. and Mrs. James R. Weckenbrock  
Weinstein Electric Company  
John and Sarah Weiss  
Mr. and Mrs. James Wertenberger  
Mr. Larry M. West  
John and Ruth Westol  
Mrs. Carol Ann Wetters  
Mrs. Susan L. Wheadon  
Norman and Mimi Wheeler  
Mr. and Mrs. Allen H. White  
Mr. William White  
C. Donald and Beverly Whitefoot  
Ben and Jessica Whitehead  
Thomas and Cynthia Whitledge  
Michael and Dianne Whitman  
Nan and Ron Wick  
Ms. Marcia Wiersma  
Ms. Joan Wiesen  
Ms. Kathleen M. Wiesen  
Ms. Cynthia Wilbanks  
Rick Wiles and Maggie Daniels  
Mr. and Mrs. Philip Williams  
Dr. Donald Willman  
Mrs. Ethel M. Wills  
Mr. and Mrs. Colby Wilson  
Foster Winter  
John and Connie Wintzinger  
Mr. and Mrs. James D. Wirt  
Matt and Kristen Wise

Ms. Robin Wodek  
Jim and Judy Wojciechowski  
Denny and Marilyn Wolcott  
Ms. Joan A. Wolf  
Allen and Janice Wolfe  
Mr. Charles Wolterink  
Christopher and Sally Wood  
Mr. and Mrs. Gary W. Woodcock  
Thomas and Sarah Woods  
Ms. Kathie Woods  
Peter and Michele Worden  
Matthew and Taya Workum-Byers  
Laurel Wright and Dan Yannantuono  
Ms. Carol A. Wright  
Mr. George Wright  
Mrs. Maxine A. Wyatt  
Wendy Wygant & Steven Davis  
Mr. Kenneth C. Wylie  
Denise Wyzywany  
Patti Yauck  
Mr. and Mrs. Michael W. Yeiser  
Jeanne Dolson and Michael Yocum  
YourCause, LLC  
Philip and Susan Zaborowicz  
Mr. Gary Zachritz  
Merilyn Ueno and Doug Zernow  
Dave and Marcia Zielinski  
Mr. and Mrs. Gordon Zimmer  
Mr. and Mrs. Donald L. Zink  
Dutch Zonderman & Bonny Everett  
Ms. Natalie Zoufal  
Mrs. Patricia L. Zoyhofski  
Doug and Pam Zwart

In-Kind Donors

9 Bean Rows  
Amical  
Mr. and Mrs. Allen A. Ammons  
Gary and Christine B. Armbrecht  
David Armbrecht and Sally Kotani  
Art of Roxanne  
Art's Tavern  
Aurora Cellars  
Baabaazuzu  
William Bachman  
Steve and Pam Bardenhagen  
Mr. and Mrs. Gary Bardenhagen  
Mr. and Mrs. James V. Bardenhagen  
Bare Knuckle Farms  
Mario Batali & Susi Cahn  
Bayside Gatherings  
Russell Beaty and Linda Hepler  
Becky Thatcher Designs  
Ben Maier Ceramics  
Abra Berens  
Drs. Lindsay and Mark Bibler  
Black Horse Farm  
Black Star Farms  
Drs. Peter and Eleanor Blitzer  
Bluebird of Leland  
Blustone Vineyards  
Boathouse Vineyards LLC  
Bonobo Winery  
Caroline F. Brady  
Brian Zimmerman & Associates  
David Brigham and Allison Arthur

Mr. Chad Brown  
Mr. Bo Burke  
Herb and Mickey Burns  
M. Christine Byron and Thomas Wilson  
Karen L. Chase  
Chateau Chantal  
Chateau De Leelanau  
Chateau Fontaine  
Cherry Basket Farm  
Cherry Republic  
Richard and Carolyn Chormann  
Brenda J Clark  
Mrs. Betty C. Clarke  
Paul and Peggy Cova  
Creekside Grains  
Janet Crone  
Crystal River Outfitters, The Cyclery & M-22 GA  
Cynthia Galbraith Curley  
Michael Danaher  
Dancing Frog Press  
Mr. Jerry Dennis  
Jane Ditri  
Mark and Karen Drake  
Nancy R. and Berkley W. Duck  
Tom and Gretchen Dunfee  
Earthwork Music  
Chris and Barb Egeler  
Elements Fine Home Goods  
Empire Town Hall  
Enerdyne  
John and Linda Engelhard  
Epicure Catering  
Gina and John Erb  
Becky Ewing and Bob Eichenlaub  
David Fought, CPA  
Ms. Susan V. Fehrenbach  
Ferguson Lawn Center  
Foley Fish  
Folgarellis  
Food For Thought  
Forty-Five North Vineyard and Winery  
Front Porch  
G.J.'s Rentals  
Gallaghers Farm Market  
Georgina's  
Glen Craft Marina  
Gluten Free Goodies  
Gourdie-Fraser, Inc.  
Marvin Grahm and Christine Hauke  
Great Goods  
Greta's of Leland  
Mr. Charlie N. Hall  
Hansen Foods  
Ms. Maia Hausler  
Haymaker Poultry  
Hillside Homestead  
Mr. and Mrs. Kent N. Holton  
The Homestead  
Gladys Hoogterp  
Rich and Beth Hoover  
Michael Huey  
Idyll Farms  
Inland Seas Education Association  
Island Thyme Catering  
Mark and Andrea Iuppenlatz



In-Kind Donors cont.

Joe's Friendly Tavern  
Jamie Miller  
KB Sutton Massage  
Ken Scott Photography  
Dr. Frank Kerrigan  
Mr. and Mrs. Edward A. Ketterer  
Mr. and Mrs. Julius W. Kolarik  
Mr. Tom Krueger  
L. Mawby Vineyards  
La Becasse and Bistro FouFou  
Lake Affect  
John and Joy Lang Anderson  
Mr. and Mrs. Erik Larsen  
Leelanau Cheese Company  
Leelanau Children's Center  
Leelanau Coffee Roasting Co.  
Leelanau Enterprise  
Leif Sporck Tile Art  
Leland Lodge  
Leland Mercantile  
M22 LLC  
Manitou Island Transit  
Martha's Leelanau Table  
Mr. and Mrs. Steven Martineau  
Larry Mawby and Lois Bahle  
Mayfly Designs, LLC  
Mr. Matthew D. McGovern  
Kristi McKenzie and Frank Sellgren  
Abigail Mead-Janko  
Kenneth and Barbara E. Melichar  
Ellen Mershon and Allen Northcutt  
Michelle's Miracle, Inc.  
Michirondack  
Mr. and Mrs. Frederick Miller  
Mr. Andrew Milliron  
Mr. Allan W. Mitchell  
Ms. Marilyn Mook  
Ms. Mimi Mullin  
Eric Munson  
Tom Nelson and Stephanie Berger-Nelson  
Mark Nesbitt & Sara McVay  
Nest of Grand Traverse  
New Mission Organics  
Mr. and Mrs. Patrick Niemisto  
Nonna's Italian Cuisine  
Northern Latitudes  
Northern Seasons, LLC  
Northern Way of Life Photography  
Charles and Connie Olson  
Omena Cut Flowers  
Mr. and Mrs. William J. Orcutt  
Laura Gits Paine  
Perennial Harvest  
Christina Pfeufer  
Ms. Holly Pharmed  
Dr. and Mrs. Robert Pool  
Mr. and Mrs. Brian R. Price  
Ms. Mary Query  
Bert and Helene Rabinowitz  
Red Path Orchards  
The Redheads  
Shawn Ricker and Steven Cacosca  
Riverfront Pizza & Specialties  
The Riverside Inn  
Mary Beth Rollings

Mr. and Mrs. William Ross  
Rustic Roots  
Ruth Conklin Gallery  
Mr. and Mrs. Ross G. Satterwhite  
SBD Tours  
Mr. Greg Schmid  
Walter and Leslie Schmid  
April Schwaegerle  
Mr. and Mrs. David T. Shelby  
Sisson's Main Street Specialties  
Greg Sobran  
Ms. Lianne Somerville  
State Theater  
Steelcase  
Stone House Bread  
Mrs. Evy K. Sussman  
Suttons Bay Bikes  
Suttons Bay Schools  
Tandem Ciders  
Timberlee Hills  
Trapper Ron's  
Trattoria Funistrada  
Tru North Landscaping LLC  
Tsonga  
Unparalleled45

Sheen and David Watkins  
Weathervane Vineyards, Inc.  
Larry and Marcia Webb  
Julie R. Weeks & Walter Hoegy  
Norman and Mimi Wheeler  
Mr. Justin Winkelman  
Barbara and Eric Winkelman  
Glenn Wolff  
Joan and Randy Woods  
Zoup!

Marketing Agreements

Cherry Republic  
L. Mawby Vineyards  
M22 LLC

2015 Event Sponsors

Bahle's of Suttons Bay  
BAIRD Kiessel Rivard Group of Traverse City  
Biggs Construction Service  
The Bluebird  
Chef's Pride Catering  
Chemical Bank  
Mr. and Mrs. Edward J. Collins

Easling Construction Company  
Fischer's Happy Hour Tavern  
Carey A. Ford, Realtor  
Gourdier-Fraser, Inc.  
Harborside Dental  
Kent and Beck Holton  
The Homestead  
Leelanau Cheese Company  
Leelanau Enterprise  
Leland Lodge  
New Mission Organics  
Mr. John Preston  
Raymond James  
Jack and Susan Seaman  
Sterling Law Office  
Suttons Bay Animal Hospital  
Traverse City State Bank  
Trish's Dishes  
Venture Properties  
Wells Fargo  
Whaleback Inn  
Williams and Bay Pumping Services

Barbara Abbott  
Aaron Ackerson  
Amelia Ackerson  
Connie Adamson  
Shirlee Affhalter  
Jen Amin  
Al Ammons  
Margo Ammons  
Dave Amos  
Kathy Angus  
Tom Angus  
Christine Armbrecht  
Dennis Armbruster  
Kimberley Armbruster  
Anna Bahle  
Lois Bahle  
Rich Bahle  
Robert Bahle  
George Ball  
Merry Ball  
Christi Bardenhagen  
Gary Bardenhagen  
Jan Bardenhagen  
Jim Bardenhagen  
Pam Bardenhagen  
Steve Bardenhagen  
Dan Bauer  
Doug Bauer  
Jan Bauer  
David Bellizi  
Stephanie Berger-Nelson  
Vicki Berglund  
Jennie Berkson  
Blake Bernard  
Susan Betzig  
Jack Biggs  
Earlene Blevins  
Chuck Bond  
Janis Bond  
Sally Booth  
Carol Bowen  
Barbara Bowzer  
Caroline Brady  
Philip Brossy  
Marsha Buehler  
Tom Buehler  
Lynn Bugenske  
Tim Bugenske  
Marsha Buhr  
Murielle Buhr  
Nora Bumb  
Bo Burke  
Joanne Burnham  
Keith Burnham  
Nathan Burns  
Christine Byrum  
Pat Carlson  
Kyle Carr  
Karen Chase  
Abby Chatfield  
Susan Cocciarelli  
Bobbie Collins  
Ed Collins  
Miki Connell  
Dick Cooper

Thank You to Our 2015 Volunteers!

Jan Cooper  
Paula Crimmins  
Tom Cyr  
Jane Damschroder  
Mary Davidson  
Meg DeJager  
Treva DeJong  
Dottie Delehanty  
Maia Hausler  
Jeannie Dennler  
Rita Dick  
Chuck Dickerson  
Janet Dickerson  
Joey DiFranco  
Alison Dilts  
Dalyard Doletiss  
Barbara Dove  
Barry Dove  
Nancy Duck  
Gretchen Dunfee  
Tom Dunfee  
David Edelstein  
Robert Elliott  
Ruth Elliott  
Lin Emmert  
Gina Erb  
John Erb  
Sally Erickson  
Steve Erickson  
Betty Farber  
Jim Farese  
Dave Faught  
Will Faught  
Bob Featherly  
Susan Fehrenbach  
Dennis Ferguson  
Erika Ferguson  
Keith Ferguson  
Dave Fischer  
John Fitzpatrick  
Mary Fleishman  
Mike Fleishman  
Jill Foerster  
Carey Ford  
Pam Fraker  
Judy Galla  
Rick Gans  
Candy Gardner  
Lee Gardner  
Gus Geil  
Ruth Geil  
JoAnne Gerben  
Bob Gilbert  
Matt Gorentz  
Barbara Graham  
Jeffery Green  
Susan Green  
Don Gregory  
Ginny Haag  
Gene Hadjisky  
Maryellen Hadjisky  
Chris Halbert  
Rick Halbert  
Logan Hardie

Sherrie Hardie  
Anka Harkness  
Dan Harkness  
Kat Harkness  
Christine Hauke  
Larry Hauser  
Kaitlin Hausler  
Karl Hausler  
Maia Hausler  
Tracy Hobbs  
Judith Hoeffler  
Walter Hoegy  
Becky Holton  
Kent Holton  
Rich Hoover  
Nancy Hunter  
John Imboden  
Kathleen Imboden  
Bart Ingraham  
Gail Ingraham  
Courtney Jerome  
Julie Johnson  
Michael Kane  
Ed Ketterer  
Paul Kieren  
Jane Kiernan  
Richard Kiernan  
Barbara Knapp  
Barb Krause  
Julie Krist  
Marian Kromkowski  
Laura Labriola  
Lilia Labriola  
Greg LaCross  
Eric Larsen  
Monica Larsen  
Leelanau Children's Center  
Elana Leflein  
Nancy Lindeman  
Judy Livingston  
Lori Lyman  
Tom Maiolani  
Dean Manikas  
Mary Ellen Webb Marik  
Barb Marsh  
Debbie Marsh  
Karl Marsh  
Deb Martineau  
Steve Martineau  
Ann Mason  
Larry Mawby  
Halley McDonald  
Kate McDonald  
Ann McInnis  
Doug McInnis  
Patti McNeil  
Barbara Melichar  
Kira Metcalf  
Marcia Metzen  
Craig Millier  
David Miller  
Fred Miller  
Linda Miller  
Nancy Miller

Rich Miller  
Sue Miller  
Andrew Milliron  
Colleen Moose  
Lyn Motlow  
Brad Muir  
Jeannie Muir  
Ted Muir  
Karen Mulvahill  
Annette Munson  
Eric Munson  
Scott Musselman  
Barbara Nelson-Jameson  
Ann Nichols  
Barb Nowinski  
Northport Point Teens  
Jim Nugent  
Mike O'Donnell  
Susie Oliver  
Susie Olsen  
Patrick Oriel  
Sharon Oriel  
Jane O'Rourke  
Wes Parker  
Mary Petterson  
Christina Pfeufer  
Holly Pharmed  
Ellen Pisor  
Dorothy Pollack  
Liz Porter  
Matthew Posner  
Mary Povolo  
Brian Price  
Linda Proffitt  
Max Proffitt  
Bert Rabinowitz  
Helene Rabinowitz  
David Redfield  
Jean Redfield  
John Redfield  
Matthew Redfield  
Gordon Redfield-Gale  
Natalie Redfield-Gale  
Peachy Rentenbach  
Roshad Retzloff  
Ron Rhoades  
Kathy Ricord  
Lou Ricord  
Anita Risbridger  
Georgia Rivers  
Cindy Rosiek  
Ken Rosiek  
Kama Ross  
Julie Sanco  
Ken Sands  
Ross Satterwhite  
Leslie Schmid  
Cathy Schocker  
Ed Schocker  
Ken Scott  
Diana Sebaly  
Rick Seefelt  
Kris Send  
Claudia Shannahan

Jim Shannahan  
Patty Shea  
Frank Siepker  
William Slater  
Judy Smart  
Mary Smart  
Jan Snede  
Kathie Snedeker  
Marge Snyder  
Mary Socha  
Lianne Somerville  
Leif Sporck  
Gretchen Sprout  
Angela Stallman  
Martin Stallman  
Eddie Sullivan  
Evy Sussman  
Marnie Sutter  
Tom Sutter  
Linnea Swanson  
Laura Swire  
Amy Tennis  
Brian Tennis  
Jim Thomas  
Frank Tobin  
Mary Tris  
Trudy Underhill  
Joe VanderMeulen  
Alice Van Zoeren  
Marc Vargas  
Barb Varley  
Cate Varley  
Joe Varley  
Kristy Versnyder  
Barbara Viller  
Barb Von Voigtlander  
Bruce Wagner  
Jeff Wagner  
Martha Wagner  
Janet Ward  
Yael Warshai  
Ann Watkins  
Warren Watkins  
Doug Watson  
Jackie Watson  
Larry Webb  
Marcia Webb  
Noelle Webb  
Perri Webb  
Julie Weeks  
Elise Weisbach  
Chuck Whetsel  
Janet Whetsel  
Michelle White  
Tom Wilson  
Barbara Winkelman  
Robin Wodek  
Peter Wolcott  
Holly Wolfe  
Joanie Woods  
Adam Wurm  
Gregg Zank  
Marilyn Zank  
Brian Zimmerman

Welcome New Sustainers!

This crucial group pledges a minimum annual gift of \$500 to support the operations of The Conservancy, ensuring that the long-term goals of conserving Leelanau's land and water resources can be met. Knowing that the Sustainer support is there on an annual basis has allowed us to hire bright, passionate, skilled staff that are making huge inroads with willing landowners to preserve our unique peninsula. The following people have joined our Sustainers Circle since publication of our last newsletter—thank you! To learn more/join, contact Gayle (231-256-9665). Benefits include special recognition in our publications and two events per year where Sustainers can meet our Staff, Board and other Sustainers who share their commitment to our work.

New Sustainers Kathy and John Imboden: “We are so fortunate to live in an area of such outstanding natural beauty and ecological richness. Joining the Sustainer’s Circle has allowed us to help ensure that future generations will have the same opportunity.”

Jonathan L. Birge  
Mary L. Forster  
Paul Gerhart  
Don and Ann Gregory  
Karl Hausler and Judith Case  
John and Kathy Imboden  
David and Linda Kaltenbach  
Stuart and Sharon Laing  
Betsy and Dana LePoidevin  
Drs. Scott and Mary Beth Lowe  
Robert Steinhilber  
and Mary Jo O'Connor  
Josh and Angela Van Manen





## BOARD OF DIRECTORS

Edward & Barbara Collins  
Founders

Warren Watkins, Chairman  
Sharon Oriol, President  
Ed Ketterer, Vice-President  
Julie Weeks, Vice-President  
Ross Satterwhite, Treasurer  
Steve Martineau, Secretary

Christine Armbrecht  
David Edelstein  
Bob Gilbert  
Susan Green  
Don Gregory  
Rich Hoover  
Greg LaCross  
Larry Mawby  
Karen Mulvahill  
Jim Nugent  
Linda Proffitt  
Kathy Ricord  
Leslie Schmid  
Barb Von Voigtlander  
Bruce Wagner

## STAFF

Executive Director  
Tom Nelson

Administration  
Nancy Thomas

Charitable Giving  
Betsy LePoidevin  
Gayle Egeler  
Sara Michael  
Leslee Spraggins

Communications  
Carolyn Faught  
Maia Hausler

Finance  
Wendy DesAutels

Land Protection  
Matt Heiman  
Yarrow Brown  
Sam Plotkin

Stewardship  
Becky Hill  
Emily Douglas  
Brian Price  
Nathan Burns

## Leelanau Conservancy

105 North First Street  
P. O. Box 1007  
Leland, MI 49654  
231-256-9665  
[info@leelanauconservancy.org](mailto:info@leelanauconservancy.org)  
[www.leelanauconservancy.org](http://www.leelanauconservancy.org)

Non-Profit  
Organization  
U.S. Postage  
PAID  
Leland MI  
Permit No. 5

# Volunteer with the Conservancy!

Volunteers are super important to our success and we have many opportunities for you to get involved. You can work at our Picnic, serve on our Auction Committee, work with our water sampling group, help out in our office with mailings and more. Tell us about your interests by filling out our Volunteer Questionnaire. Find it by clicking on the Volunteer tab at [leelanauconservancy.org](http://leelanauconservancy.org). Also, check out the list below for upcoming volunteer opportunities.

## Wildflower Rescue Committee Kickoff Meeting

April 21st (details on page 14)

## Earth Day Workbee at Clay Cliffs

April 22nd 10 am-noon

## First Wildflower Rescue Dig

April 25th (details on page 14)

## Garlic Mustard Pull Workbee at Lighthouse West

May 10th, 1 pm-3 pm

## Garlic Mustard Workbee at Clay Cliffs

May 14th, 9 am-noon

## Garlic Mustard and Mullein Workbee at Palmer Woods

May 21st, 10 am-noon

## Garlic Mustard and Buckthorn Workbee at Clay Cliffs

June 4th, 10 am-noon

## Knapweed & Bladder Campion Workbee at Houdek Dunes

July 14th, 9 am-11 am

Get more info about each workbee and register at [leelanauconservancy.org/events/hikes](http://leelanauconservancy.org/events/hikes)

