



Leelanau Conservancy

*Conserving the Land, Water and
Scenic Character of Leelanau County*

Newsletter

Fall 2004

Vol.15, No. 3

Beloved Crystal River to Be Preserved Forever!

If you are one of the thousands of people who have canoed, kayaked or simply cooled off in the Crystal River near Glen Arbor, we are so happy to report that the property along the river owned by The Homestead will remain undeveloped for you to enjoy forever.

After years of effort, purchase documents were signed in early November between the Leelanau Conservancy, the National Park Service (NPS) and The Homestead. The agreements will ultimately transfer 104 acres and 6,300 feet of frontage along the Crystal River owned by The Homestead to the Sleeping Bear Dunes National Lakeshore. This transaction is one of the most significant in the Conservancy's history, and a landmark achievement for preservation in Leelanau County.

"A decades-long struggle over the river's future has ended, and we are pleased to be able to usher this beautiful, ecologically fragile resource into the protective domain of the National Park Service," says Conservancy Director Brian Price. "We're proud to be a part of a solution that works for everyone and are very grateful to The Homestead and to the NPS for their patience and willingness to participate in this very complex transaction."

Twenty-two acres of the property, including one of the most scenic stretches along County Road 675, was purchased by the NPS in November. An additional 23 acres is being held by The Homestead for sale to the NPS, hopefully early in 2005. The rest of the 104-acre parcel, 59 acres including prime frontage on the Crystal River, will be purchased by the Leelanau Conservancy for eventual sale to the NPS.

Dusty Shultz, Sleeping Bear Dunes National Lakeshore Superintendent, characterized the transaction as "a milestone achievement." "Special thanks and appreciation goes to the Leelanau Conservancy for their major financial role



in this endeavor," says Shultz.

The Conservancy will borrowed \$4.85 million in order to purchase the key 59 acre parcel. A three- year plan has the NPS buying the land in segments from the Conservancy as federal funds become available. The overall price for the land was established by an independent appraiser hired by the NPS.

"Our role here is as an intermediary," says Conservancy President Craig Miller. "We still have a way to go before we are bought out by the NPS, and we're taking a significant risk."

Miller adds, "We are grateful to the Conservation Fund and National City Bank for their help with financing, to the Herbert and Grace Dow Foundation and the Carls Foundation and other individuals who have pledged to cover our carrying costs, and to the Friends of the Crystal River for their assistance in helping to get the enabling legislation through Congress."

"The resolution is a win-win for the public, for the river, and for The Homestead," says Vik Theiss, Vice President of Friends of (continued on page 3)



President's Message

The Crystal River, A Treasure Recovered

"Crystal," the substance, is highly valued for its brilliancy, radiance, sparkle and splendor. As such, it is appropriate that the Crystal River is so named.

After more than two decades of great effort, disappointment and persistence, 6,300 feet of pristine river frontage and 104 acres of bordering land will be permanently preserved for public enjoyment.

In large part, the Conservancy was the spark and catalyst in this last chapter in the attempt to rescue one of Leelanau County's greatest treasures. The "can do" attitude of our staff, the vision of our board, and the support of our members made this happen.

Equally important was the willingness and the patience of The Homestead principals, the National Park Service, the Friends of the Crystal River and the Conservation Fund. The convergence of persons and entities in a partnership of conservation is a great testimony to what can be accomplished in natural resource preservation when we all work together.

The details of this milestone achievement are outlined in this newsletter. Many challenges, primarily financial, still remain. For its part, the Conservancy has borrowed almost five million dollars for this transaction, and we expect our carrying costs to exceed \$500,000. We could not have taken on this financial obligation without the strength of our donors behind us, in particular the individuals and foundations that pledged to cover the costs associated with this massive endeavor.

It is our expectation that Congress, thanks in large part to Representative Dave Camp and Senator Carl Levin, and the NPS, will purchase the remaining Crystal River property from the Conservancy and The Homestead. These additions to the National Park will take place over the next four years. The cost of borrowing and closing costs will test our resources during this time frame.

I am proud of the Conservancy. We have and will continue to do great things.

Craig A. Miller, President



Welcome New Board Members

We're pleased to announce that the following people joined our board in November:

Warren Watkins grew up spending summers in Leland. After graduating from U of M in business administration he entered the information consulting field. He was a partner at Accenture where he worked for 26 years before retiring in 2003. He and his wife, Ann, live in the Detroit area and spend as much time as possible at their home north of Leland. Their two children, Megan and Andrew, are recent college graduates. Many of Warren's family members live in Leelanau, and all maintain strong ties to the area. He brings a long-term perspective to the conservation issues we deal with on a daily basis, as well as a wealth of business experience to our board.



Warren Watkins

John Erb and his wife, Gina, live on Gills Pier. John attended the University of Detroit and also holds a JD, IIT from Chicago Kent College of Law. He is retired from private practice in Chicago. He served as Chairman of the Board of Trustees for Leelanau Memorial Health Center and is currently Chairman pro-tem for the Leelanau Corporate Members of Munson Healthcare. He and Gina have been valuable volunteers and participants for the Conservancy. John will help provide guidance and leadership in the challenging issues facing Leelanau County and the Conservancy.



John and Gina Erb

Barbara Nelson-Jameson is a graduate of U of M and works for the National Park Service Rivers, Trails, and Conservation Assistance program. As the midwest representative of this unique branch within the NPS, she provides guidance and assistance to a great many community groups who are engaged in open space preservation, greenways, parks planning, and trailways. Given her experience and professional connections, we are fortunate indeed to have Barbara serving on our Board. She and her husband, Lee, live in Suttons Bay with their daughter, Emily, a second-grader.



Barbara Nelson-Jameson

We are deeply appreciative to outgoing board members Frank Bracken and Sue Flerlage, who served our organization well. Both were instrumental in obtaining critical private funding for land protection and presided over a time marked by significant land protection projects and membership growth.



CRYSTAL RIVER (Continued from Page One)



the Crystal River. "It's a fitting resolution and a wonderful ending to a very divisive situation."

"We've always felt that the best alternative to our initial plan for the use of the property was preservation," said Robert Kuras, president of The Homestead. "We're pleased to see the hard work of the Conservancy and the NPS come to a conclusion that benefits everyone in our community."

The majority of the land and its accompanying river frontage that is being protected is sensitive "dune and swale" topography. The area is recognized by the U.S. Fish and Wildlife Service as "globally rare habitat."

The 104 acres is situated between the "Oxbow" portion of the Crystal River and The Homestead's housing development at Woodstone and is visible from M-22. The Oxbow has already been preserved by the Conservancy in partnership with Glen Arbor Township.

Congress appropriated one million dollars and the NPS allocated another \$650,000 to purchase the first 22 acres. "This is the most ecologically sensitive parcel in the whole project," says Price. The land contains half of the river frontage that will ultimately be preserved under the plan. Homes located along this stretch would have been visible from Dunn's Farm Road, and would be among the first encountered by canoeists on the Crystal River.

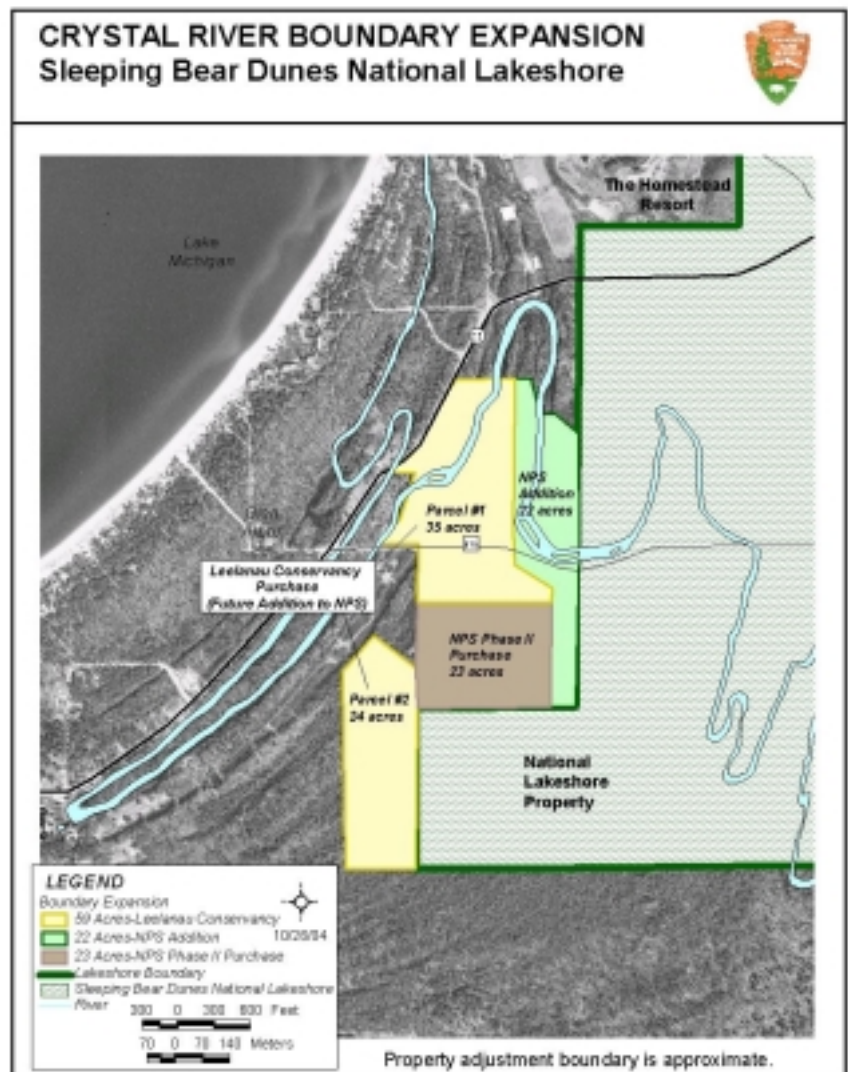
Congressmen Dave Camp and Senator Carl Levin helped to pass legislation that expanded the Park's borders and pushed to get the funds for the first-phase acquisition approved and released. "We'll continue to rely on their help moving forward," added Price.

Congressman Camp says, "I'm very committed to seeing this through. I have very strong

memories of spending time on the river as a child with my family. I have wanted to help resolve an issue that's been unresolved for far too long. The Conservancy's willingness to step up, put the financing in place and assume the risk has allowed us to move ahead." Camp hopes to secure funding for the next stage of the acquisition in the 2005 budget.

Senator Levin echoes his support. "This (agreement) is a crucial step towards the inclusion of this entire parcel within the National Lakeshore. This agreement not only signals the end of nearly two decades of community strife, but also preserves this beautiful and pristine stretch of the Crystal River for generations to come," says Levin.

"The issue has enjoyed bi-partisan support," says Price. "It took a lot of people to make this happen. We're glad we could be the one to bring them all together to find a solution. That is our role, as I see it—to bring people together to find solutions for protecting Leelanau's most treasured and valuable natural resources."





Lake Leelanau Watershed Initiative Off and Running

This summer, 25 people gathered at Leland Public School to kick off our most ambitious watershed protection effort ever. The attendees were charged with the responsibility of helping to put together a strategy to protect the health of Lake Leelanau. Chief among their tasks: raise matching funds in order to claim a \$723,000 Clean Michigan Initiative grant the Conservancy received last December—a grant earmarked for protecting wetlands and groundwater recharge areas on Lake Leelanau. On that summer day, the Lake Leelanau Watershed Initiative was born—a group that includes the Lake Leelanau Lake Association (LLA), the Leelanau Conservation District, business owners such as Fountain Point Resort and citizens concerned about the lake's future.

"We'd like to leave a legacy to future generations of healthy wetlands, intact wildlife corridors, high water quality, and scenic ridgelines," says Executive Director Brian Price, who adds that the funds will be used to protect ecologically sensitive areas like wetlands and their associated forests as well as undeveloped shoreline. "It's a lofty goal, but we have a tremendous opportunity to protect the watershed right now with the help of some seed money from the state."

"I was ecstatic when I heard about the grant, which will go a long way toward protecting lands that are so critical to the long-term health of the lake," says Mary Taylor, past president of the LLA. "We're really behind this project and will do all we can to help raise matching funds."

The Conservancy is hoping to go well beyond the required \$241,000 match by matching the grant dollar for dollar. That would mean a total of \$1.5 million could be directed toward land protection efforts in the 140-square-mile Water-



Those who contribute \$500 or more receive a signed copy of this Kristin Hurlin print depicting the Lake Leelanau Watershed

shed that spills into five different townships and takes in 40 miles of shoreline. The Grand Traverse Band of Ottawa and Chippewa Indians kicked off the effort with a \$20,000 grant through its two percent revenue sharing program.

"Between the CMI Grant, the Tribe's contribution and the private fundraising already under way, we're more than halfway toward our goal," says the Conservancy's Natasha Lapinski, who is spearheading the Initiative.

"Funds raised along with the grant will be used to obtain conservation easements from willing landowners," says Price. He points out that Lake Leelanau and its wetlands have always been a land protection priority for the Conservancy, and over two miles of natural shoreline have already been preserved in the past 15 years. This time, he adds, the focus will be on conservation easements. A conservation easement is a voluntary, legal agreement in which a landowner limits specific uses or development of his or her property while retaining private ownership of the land.

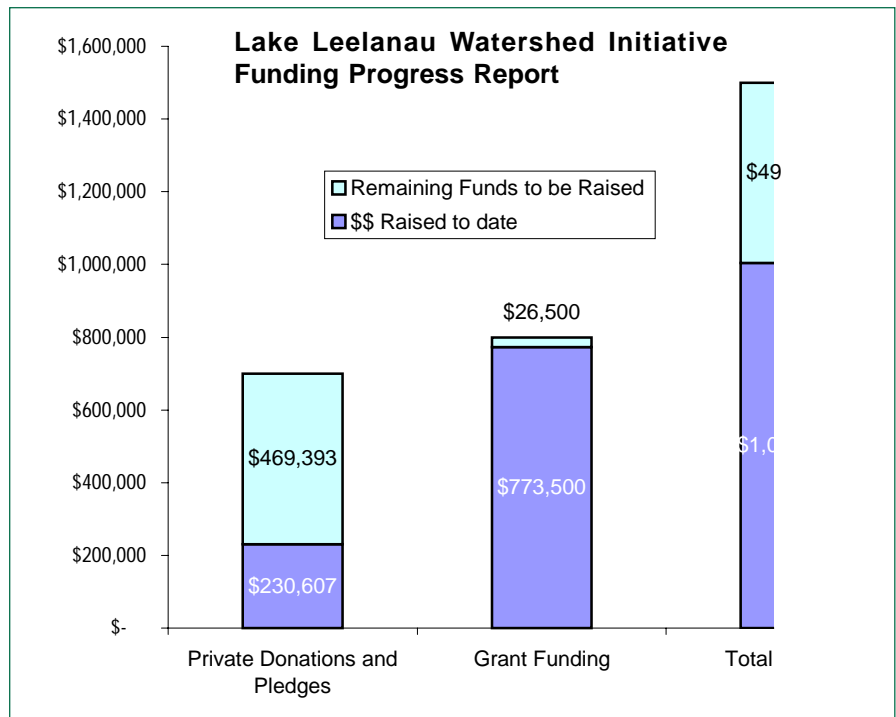


Everything that happens - good or bad - in the watershed, affects the health of Lake Leelanau



Lake Leelanau Watershed Initiative, Continued

Initiative Committee members signed letters to 4,000 property owners in the Watershed to help to give them information about the Lake Leelanau Watershed. The letter also had a fundraising component: donors who contribute \$500 or more to the Initiative will receive a signed print of the artwork pictured by Kristin Hurlin. The original painting was underwritten by Fountain Point Resort on Lake Leelanau. If you have land within the Watershed, and would like to learn more about protecting it, or want to get in involved with the Initiative, contact the Leelanau Conservancy: 231-256-9665, or email: conservancy@leelanau.com.



More land protected under LLWI Program!

Gary and SueAnn Cook Protect 59 acres near cedar

The public education and fundraising part of the Lake Leelanau Watershed Initiative was launched in September. But our land protection specialist Matt Heiman began working with Watershed landowners interested in protecting their lands long before that. Matt has just completed a second project utilizing Clean Michigan Initiative funds.

This newest project protects an additional 59 acres of undisturbed wetland and forested hillsides in Centerville Township. Landowners Gary and SueAnn Cook were thrilled to learn about the potential for the Conservancy to pay them cash for most of the development value in land they planned to leave as it was anyway.

About eight years ago the Cooks purchased their 80 acres near Cedar with plans to eventually build a home and enjoy the solitude surrounded by wetlands and rolling hillsides. Last spring a neighbor introduced them to Conservancy's latest effort to protect wetlands and groundwater recharge areas in the Lake Leelanau Watershed using Clean Michigan Initiative monies to purchase conservation easements. Over the next few months they worked with Matt on drafting a conservation easement and determining what parts of their land they would like to have perpetually left to nature's forces.

The Cook's 59 acres of protected land contains approximately 3,700 feet of Lake Leelanau tributary streams. The

adjacent wetlands and forested hillsides along the stream corridor help to filter surface water runoff and maintain high water quality for the downstream neighbors and eventually the lake itself. Besides the tremendous ecological benefits, the project helps to create a conservation corridor, as it lies immediately downstream from the Buffum property also protected by conservation easement (Sept. 2003)

These two projects together now protect 139 acres of forest and wetlands that contain the headwater springs for this unnamed stream. It is hoped that future projects with downstream landowners will help to create a 200-acre corridor. Linking protected properties along a stream corridor allows the wildlife habitat and water quality benefits of each individual project to complement each other. By incorporating them into a larger area we are increasing the overall benefit to the watershed.



The Cooks with Land Protection Specialist Matt Heiman



Protecting Our Most Precious Assets: The Basics of Land Stewardship

It is easy to assume that once the Conservancy purchases a piece of property or obtains a conservation easement, that the work is done. In fact, the opposite is true – the job of ensuring that land protected by the Conservancy remains true to our vision only begins with the closing papers. This part of the Conservancy's work is called Stewardship.

Any landowner who cares about the future of their land needs to first establish a “guiding philosophy”—a framework for decision-making. Land under conservation easement is still owned and managed by private landowners and we seek to be good partners and advisors. On land that we own and manage, we can establish long-term goals and institute plans to accomplish them. In all cases, basic ecological principles are used to determine effective management.

CONSERVATION EASEMENTS

To date, the Conservancy holds 79 Conservation Easements, (legal agreements in which the landowner limits usage of their property while retaining private ownership), in all 11 townships totaling over 2,424 acres. The protected land varies from wetlands and old-growth forest to farmland and open space. Each easement is unique, representing both the needs of the landowner and those of the Conservancy. In the end, the land is protected in perpetuity.

Although easements vary, once negotiations are complete, a Baseline Document is compiled for each easement. The purpose of the Baseline is to document the property's condition at the time the easement document is signed. The Baseline then becomes the “benchmark” by which the easement is monitored, or checked to see that the provisions of the easements are being upheld. Included in the Baseline are descriptions of soil, topography, land use, ecology, human-made and scenic features and environmental concerns. Additionally, numerous photographs are taken and maps are compiled. Easement monitoring occurs a minimum of once per year.

NATURAL AREAS/PRESERVES

The Conservancy also protects land through acquisition. Currently, there are 20 properties, (9 Natural Areas, 11 Preserves) owned by the Conservancy. The management of these properties is considered Stewardship as well. Once property is purchased or received through donation, a management plan is written. These plans lay out our goals and objectives for property and the steps necessary to reach those goals. The goals address all types of issues ranging from past human usage (i.e. hunting, farming) to ecology. The Management Plan

also spells out which areas will be open to the public and contain trails, parking areas, etc. and which will be set aside to preserve ecological functions, such as water filtering for lakes and streams.

If trails and parking areas are created, they must be maintained. Downed trees across trails need to be cleared, kiosk information and signage need to be updated, parking areas need to be graded and plowed. There are numerous tasks associated with keeping areas hiker-friendly.

Saving land is only the beginning of our job. Stewardship, the careful monitoring and management of protected land, is a critical part of our work. Annual memberships and donations to our Stewardship Fund help us to fulfill this part of our work.



John Scott and Bob Hagerman from the Volunteer Stewardship Network install a new kiosk at Chippewa Run this fall. Take note, the entrance to Chip Run has been moved...

Stewardship in Action at Chippewa Run

A lot of our work could not be done without the Volunteer Stewardship Network (VSN). The VSN is a very small group of committed individuals, who enjoy working outside and helping the Conservancy. The group is responsible for the maintenance of Natural Areas and Preserves as well as special projects, including restoration and environmental interpretation. See photos above and on next page.

CLEAN UP CREW

On a cold and windy day students from the Leelanau School picked up trash at Chippewa Run Natural Area. Recycling bins are located nearby so trash clean-up is an ongoing job. Thanks go to the students and to Cherry Republic who lent a truck and space in their dumpster for what was collected. The day was not without its rewards: While hunting for trash, the group “discovered an amazingly cool little spot in Chippewa Run. The kids were really into it,” says Chris Sack, director of Residential Life for the Leelanau School.



CLEAN UP CREW



from left to right: The Leelanau School's Chris Sack, Joe Clark, Olivia Davis, Chelsea Strough, Maggie Lonero, Dr. Mary Gribbin. Caz Clark and Derek Precht of Cherry Republic

RESTORATION UNDERWAY



VSN volunteer Dr. Kyle Carr tills under spotted knapweed in preparation for a native plant garden that will attract butterflies. The Glen Arbor Garden Club will pick up where the VSN leaves off.

Our Conservation Easement: "a way for us to keep our dream alive"

by Kay Charter



At the signing of the first conservation easement on our property, then Leelanau Conservancy President Ed Collins thanked my husband, Jimmy, and I for our gift. Several years later, when an acquaintance placed an easement on his property, he spoke of it as a gift to the Conservancy. And in 2002, when my husband and I placed another easement on that portion of our land we were preparing to donate to Saving Birds Thru Habitat, then-Conservancy President Dick Ristine again thanked us for our generosity.

These comments have always puzzled me. For me, the gift is not from us to the Conservancy, but rather from the Conservancy to us. I can't for the life of me figure out what the Conservancy receives from these transactions - except the satisfaction we all get from the knowledge that another special place has been saved from development. But I understand precisely how my husband and I benefit from our easements.

Shortly after Jimmy and I purchased the 47 acres that became Charter Sanctuary, we stood at the top of the hill surveying the mix of habitats spread before us. I said, "Just think, after we're gone, this will all belong to our birds."

However, without someone to ensure that this place actually is preserved in the way we want it to be, it might not have always been there for the birds. And that someone is the Leelanau Conservancy, which, with every easement it

signs, agrees to see that the terms of the agreement - which the owner stipulates - are carried out in perpetuity.

During spring migration, after the first easement was in place, it occurred

to me that we didn't have to enter the next life in order to benefit the birds of this one. With the signing of that wonderful document, it already belonged to them.

Several years ago I wrote to Bobbie Collins, who with her husband, Ed, founded the Leelanau Conservancy, thanking her for her vision in helping to create this great organization. In that letter, I said that without the Leelanau Conservancy, there probably would be no Charter Sanctuary. Jimmy and I would never have invested all we did in this land without the assurance that it could be protected into the future.

So thanks again to you, Bobbie - and also to Ed, Brian, Susan, the rest of the staff, and all you members who have helped the Conservancy become what it is. Through the gift of an easement, you have provided a way for us to keep our dream alive.



Kay and Jim protected their bird sanctuary by donating a conservation easement to the Conservancy.



Omena Woods Forever

Walkers and bikers who routinely make the four-mile loop around Omena Point will be happy to know that this trillium-laden hillside will forever be preserved. The Conservancy purchased a bargain sale conservation easement on 110 acres from the Omena Woods Association that ensures that the threat of development on several ridge top lots visible from M-22, Mougey Lake and Omena Bay has forever been eradicated.



At the closing:
Standing, left to right: Conservancy Land Protection Specialist Tom Nelson, Bruce Balas, Charlotte Read, Caroline Oberndorf, Land Protection Specialist Matt Heiman. Sitting (left) Marsha Buehler, Board Secretary Mary Lyons.

What Is a Conservation Easement?

- A legal agreement to protect the natural qualities of your land by restricting development.
- Flexible - you negotiate the terms of your Conservation Easement with our Land Protection Specialist.
- Land stays in private ownership.
- Can result in an income tax deduction and reduced property and estate taxes.

Lighthouse West: Journey to Protection Far From Over

The tip of the Leelanau Peninsula can be a really cold place this time of the year. November brings tumultuous wind, battering rains, and intense wave action that pummel the cobble beaches along open shores. The migratory birds have come and gone. Those that pass through from the northern latitudes of Canada on their way to the rain forests of Brazil and the pampas of Argentina have already made their stop in Leelanau. Luckily they have places like the tip of the peninsula to rest and forage in preparation for their long, arduous journeys.

The Conservancy is happy to report we are contributing to avian resting spots by protecting the 42-acre Lighthouse West property. Just south of the Grand Traverse Lighthouse, this land is part of an important "wildlife corridor" at the tip of the peninsula. The price tag on Lighthouse West was steep at \$1.8 million. Since the June closing we have raised just over \$250,000 in pledges and donations towards its purchase. We also applied to the Michigan Natural Resources Trust Fund in August for \$1.2 million to help with the project. We anxiously await word on the Trust Fund grant, and hope to hear by December. Even with the grant—which would be fantastic, we're still short \$350,000. If you haven't yet donated to support this once-in-a-lifetime acquisition, please do it today!



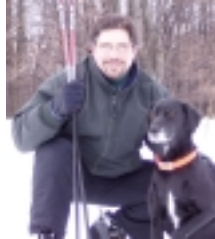
Lighthouse West at the tip of the peninsula: Critical stop-over habitat for migrating birds. We must raise \$350,000 to complete this purchase. If you have not yet donated, please include this important project in your year-end giving plans.



Farm and Update—Two Milestones Attained

by Tom Nelson, Land Protection Specialist

Day in and day out, your Conservancy works hard to forge partnerships to achieve our mission of conserving the land, water and scenic character of Leelanau County. We count on members like you, forward-thinking landowners, local, state and federal governmental agencies and others to help make our mission a reality. We couldn't do it without the commitment of so many.



Unfortunately, the going gets tougher when it comes to farmland preservation. And, frankly, it's not necessarily clear why. It seems like everyone understands that Leelanau's unique rural character is bound up in the interplay of water, shoreline, forests and farms. Take any one of these elements away, like farmland, and Leelanau ceases to be Leelanau. But not everyone, including some in our local units of government, understands that farmland preservation doesn't come easily or cheaply. As development pressures and foreign competition weigh more heavily on our aging farmers, farmland becomes ever more dear. Thank goodness then for the support of our members, the substantial contributions of the individual farmers with whom we've worked, private foundations and others who have been able to help us leverage the federal dollars necessary to make meaningful if not huge strides in saving farmland here.

While we still must raise over \$700,000 in matching funds, we have recently attained two significant milestones. With the recent federal funding award of \$468,000 to preserve over 260 acres of farmland in Leland and Suttons Bay Townships, the Conservancy has now acquired commitments of over \$2 million in state and federal funding and committed \$1.6 million of our own Conservancy funds for farmland preservation in Leelanau County. No small achievement! The second milestone? Once these most recent projects are finalized, we will have preserved over 1,200 acres of precious Leelanau farmland in six different townships!

Meanwhile, efforts to establish public funding to support farmland preservation continue to struggle. Nearly 40,000 acres of Leelanau farmland survived into the 21st century. But without significant local public funding, the outlook becomes less than encouraging despite the Conservancy's best efforts. Our staff continues to work with the Leelanau County Farmland Preservation Board (FLPB) to seek solutions to the lack of local public funding. Recently, you may have received a newsletter from the FLPB called *Field Notes*, with an accompanying

request for donations. As of this writing, nearly 300 Leelanau County homeowners have responded with private contributions totaling nearly \$20,000. While we are encouraged by the early returns, it is apparent that other funding sources are still sorely needed. The critical time for farmland preservation is now.

Interested in getting involved in efforts for farmland preservation at the grass-roots level? Check out the Michigan Land Use Institute's Leelanau Smart Growth Coalition at www.mlui.org/leelanau or contact Jim Lively at (231) 941-6584 ext. 35 (jim@mlui.org). To learn more about Citizens For Farmland Preservation, contact Bob Sutherland at Cherry Republic at (334) 334-3150.

Match Making

It's no small thing to raise the matches required for us to claim federal farmland funds. So it was welcome news indeed when several foundations stepped up to make sure that three very important farmland protection projects are successful.



The Newton Farm near Gills Pier is one of two farms that are one step closer to permanent protection thanks to a generous grant from Rotary Charities.

Rotary Charities has approved a \$100,000 challenge grant to assist with the permanent protection of the Newton Farm in the Gills Pier area, and the Casier Farm in Empire.

The Stanek Farm project in Elmwood Township was financially assisted by the Jacob G. Schmidlapp Trusts, Fifth Third Bank, Trustee, in the amount of a \$15,000 grant awarded in October. This particular grant will help us meet our outstanding obligation on the Stanek Farm purchase of development rights. The 4th generation fruit farm along county road 633 goes on for what seems like miles, and is considered to be the gateway to the agricultural belt of Leelanau County.

Thanks so much to these two foundations.





12



13



14



15



16



17



18



19



Summer 2004 Happenings

1. Annual Picnic site: The Newton Farm on Gills Pier
2. Brian Price with Northport Point teens who raised \$3000 at annual Triathlon for Lighthouse West project
3. Jack & Susan Hayes aboard Sustainer Mishemokwa cruise
4. Marker Tree moment: Kids hike at Kehl Lake
5. On deck at Fountain Point Sustainer party
6. Fountain Point owner Susan Nichols hosted Sustainers—thanks so much!
7. Helen & Nick Sica arriving at Fountain Point
8. Conservancy supporters gather at home of Jim and Marie Preston
9. Kay Charter explains importance of Lighthouse West habitat for migrating birds.
10. Auction mavens Lynn Peabody, Kate Williams, Annie Frazer
11. Judy Smart with Alex and Russell Newton, who placed the top bid to have tea with her daughter, actress Amy Smart
12. l-r: Jim Preston, Harry and Piper Goldson with Dan and Magee Gordon
13. Caroline Brady, Anna & Jonathan Wege at Lighthouse West supporter gathering
14. Picnic fun: tag—you're it!
15. Fall mushroom hiker
16. Picnic helpers Sandy Smith & son Michael, Carol Peterson, Molly Harrison, Gina Erb
17. Sustainers Enid and Rich Grauer with daughter Diane aboard Mishemokwa
18. Lillian and Conrad Wege at Lighthouse West hike
19. Perusing auction offerings which raised \$23,000



2005-2006 Winter Hikes and Events

Important note: We are pleased to offer this schedule of hikes, led by our knowledgeable volunteer Docents. Most hikes are free and last about 2 hours. Do dress according to winter weather. So that we may provide the best experience possible and be fully prepared, we require (and appreciate!) advanced registration. Call 231-256-9665.

Thursday, December 30th 1:00 p.m.
Close-out 2004 at Houdek Dunes

If Santa brought snowshoes, or you have a pair you'd like to strap on, we've got just the thing. Join Docent Tom Dunfee for a guided tour around this pristine 330-acre parcel with gently rolling paths through dune and forest. You must provide your own snowshoes.

Sunday, January 16th 2:00 p.m.
Winter Solitude at Kehl Lake

Winter solitude is a treasure to behold. Join Docent Jack Schultz for a snowshoe hike at beautiful Kehl Lake and celebrate the uniqueness of this incredible Natural Area. The trail at Kehl Lake will take you through hardwood forests, along undeveloped shoreline and through the white pine woods. You must provide your own snowshoes.

Saturday, January 29th 10:00 a.m.
Winter Wonderland at Chippewa Run

Join Docent Alice VanZooeren on a fun and adventurous snowshoe trip through the Chippewa Run Natural Area in the Village of Empire. You'll trek past a roaring brook, old orchard and pine forest, keeping an eye out for animal tracks and winter plants. You must provide your own snowshoes.

Saturday, February 12th 1:00 p.m.
Snowshoe Houdek Dunes in all its Winter Beauty

Get out and explore this 330-acre tract with Docent Tom Dunfee. You'll tour forested and open dunes and a wide array of wildlife habitat. You must provide your own snowshoes.

Saturday, February 26th 1:00 p.m.
Snowshoe Outing at the Chippewa Run

Winter is upon us. The snow is here in all its glory. Get out with Docent Jack Schultz and enjoy the beauty of Leelanau County at Chippewa Run. There's much to see here, from a crystal clear roaring brook to an old orchard and pine forest in its winter glory. You must provide your own snowshoes.

Saturday, February 26 6:30 p.m.

**Blues at Bluebird:
 Jimmy Prime Time
 Smith**



We are pleased to announce that the 2005 Blues at the Bluebird performer will be the great Jimi "Prime Time" Smith. Jimi is coming to us from Minneapolis, where he is a Blues legend in his own time. He has performed with musicians like Jimmy Reed and has opened for Coco Montoya. From his flashy jewelry and clothing to his amazing guitar playing, Jimi will grab the audience's attention and hold them captive for the entire performance. He can play a slow and soulful solo or jump right out at the audience with his staccato like licks that sizzle like grease on a hot skillet.

Tickets are \$30.00 per person. Dinner will be served from 6:30 to 7:30 p.m.; music begins at 8:00 p.m. Do order tickets early, this event ALWAYS sells out: call at 231/256-9665 or email gayle@theconservancy.com.

Saturday, March 19th 2:00 p.m.
Winter's End at Houdek Dunes

Docent Jack Schultz will lead you on a hike at the incredibly beautiful Houdek Dunes Natural Area. With the end of winter, this natural area is beginning its transformation to the new season. Jack will help you explore the changes of our largest natural area. If there is still snow, you will need to provide your own snowshoes.

Saturday, April 9th 8:00 a.m.
Spring Birds at Chippewa Run

Spring is in the air! The birds heading home to Leelanau. Join Docent, Alice VanZooeren, for this amazing hike through the Chippewa Run Natural Area in the Village of Empire. This time of the year finds many species of birds migrating north from the warmer climates. Alice, an expert birder and nature enthusiast, will be able to help you identify many of our fine flying friends both by sight and sound.

DIRECTIONS TO NATURAL AREAS FOR WINTER HIKES

KEHL LAKE NATURAL AREA

The Kehl Lake Trail is approximately a 1 mile loop that meanders along the lake and through the forest. Although this hike is relatively easy, hiking shoes are necessary. Beginning from the junction of M-22 and M-201 (south of Northport), take M-201 through Northport. At 1.5 miles, M-201 ends and CR 640 begins as you follow the curve to the right. Follow 640 for 1 mile to Snyder Road and turn left. Follow Snyder Road for 1.5 miles to the parking area on the left. Kehl Lake is shown as Leg Lake on some maps.

HOUDEK DUNES NATURAL AREA

There are two loops here totalling 1.25 miles that traverse gentle, but sandy terrain. Steep steps lead you from the parking area to the trailhead. Beginning in Leland, drive north along M-22 approximately 5 miles to County Road 626. Proceed another ¾ mile north along M-22. A sign on the west (left) side of the road marks the entrance to the parking area. PLEASE NOTE: The sign is located well off the road, so you will have to look carefully as you approach the small parking area.

CHIPPEWA RUN NATURAL AREA

There is currently no trail system here, but you are welcome to explore the property via deer trails or find your own gaps in the grasses. From the intersection of M-72 and M-22 in Empire, head north on M-22 about seven tenths of a mile. The parking area is located on the left, or northwest side of the street just south of the creek.

For a complete look at all our Natural Areas and Preserves, refer to our Natural Areas Guide or go to our website: www.theconservancy.com



VOLUNTEER SALUTE!!

Our ranks of volunteers are growing with us. We couldn't do it without you.

We're very grateful to L. Mawby Vineyards, Jim and Marie Preston, Jonathan and Anna Wege and Molly Harrison who hosted parties in their homes/vineyard to help us better acquaint neighbors and friends with our mission and projects.

Sincere thanks to Susan Nichols and son Erik Zehender for welcoming 180 of our Sustainers to Fountain Point Resort in July. Everyone had a great time! Thanks also to those who drove and lent pontoon boats for an afternoon educational tour of Lake Leelanau: Dick Ristine, Deb Schanno, Tim Kielty, Bill Burmeister, Jim Rich and Hugh Farber.

We appreciate the Merc in Leland for donating coffee for Conservancy meetings. Steve Geer and BATA shuttled members this summer to events. Joy Lang and Jill MacFarlane loaded their cars with our recycling. We're grateful to Jeff Montie for bringing our materials to the Bioneers Conference. Thanks to those who manned our Booth in August: Gina Erb, Mary Russell, Bill & Shirley Orcutt, Dick and Lou Ristine, Dave Williams, Mary Lyons.

Our many projects have increased our workload and made us so appreciative of our mailing crews: Bill & Shirley Orcutt, Treva DeJong, Sarah Rini, Abby Alpaugh, Jeremy Wurm, Erika & Dennis Ferguson, Marie Christianson, Nonny Bolmer, Bob & Janet McKelvey, Shirley Wheatley,



Shirley and Bill Orcutt manned our information booth this summer

2004 Volunteer and Business Partner of the Year



Volunteer of the Year: Dr. Tim Kielty.

Tim, left with Director Brian Price and Chairman Bobbie Collins, a limnologist by training, has been with us practically since our inception and has been critical to our water-monitoring program on seven county lakes. We're very lucky to have Tim's expertise and guidance in establishing this state-of-the-art program. The hundreds of hours he has put into this program and its scientific integrity is a real mark of his dedication to our organization.



Business Partner of the Year: Leelanau Communications.

Andy MacFarlane, shown here with mom Jill MacFarlane, and Jeremy Steck have been incredibly helpful to us over the years. They set up and maintain our website and were invaluable to us in helping us to conduct our online auction in August. We know that there are many ways to get our message out, and the Internet is becoming increasingly important. Having the support of Leelanau Communications ensures our future success.

Kathleen Cigan, Gail Ingraham, Penny Gordon, Dick & Lou Ristine, Ann Cleaver, Fred & June Atkinson.

Thanks to Pete Taylor & Hugh Farber for fish collection work on Lake Leelanau with the help of Todd Kalish of the MDNR. Norm Gauthier provided SCUBA diver work and Tim Kielty's leadership is critical to this program.

Our Volunteer Stewardship Network has been hard at work (see story pg 6.)

And finally, thanks to Kay Charter, who led insightful bird tours at Lighthouse West, to Ed Reinert who has for years led a fascinating October mushroom walk and our wonderful Docents who lead hikes and are ambassadors for the Conservancy year round: Ann McInnis, Tom Dunfee, Judy Smart, Alice VanZooeren, Marsha Buehler, Jack Schultz.

Snowplow Needed!

Do you live near one of our Natural Areas? Like to snow-plow? We would appreciate help keeping our parking areas plowed out at Kehl Lake Natural Area (Northport); Houdek Dunes (between Leland and Northport); Whaleback (Leland) and Chippewa Run (Empire.) Call Gayle: 231-256-9665 or email gayle@theconservancy.com.





Give a Gift that helps Preserve Leelanau!

We have some ideas for gifts that you can give your loved ones this year that have a special meaning: They help to preserve this special little peninsula. From our new "Save a little of Leelanau for me" T-Shirts (see picture on back), to mugs, aprons, golf shirts or a bottle of Conservancy wine, there is something for everyone! In addition, check out our Leelanau Preservers gift program, where you make a donation to save land in the name of your gift recipient. We've featured a brief sampling of gifts on this page. If you're interested in more, our website, www.theconservancy.com, has all the details.



l to r clockwise: Natasha wearing our pink "Save a little of Leelanau for me" Ts; a sampling of our logo items, apron, golf shirts, caps, mug and T's; Tom Dunfee sporting our logo apron at a Conservancy event this summer; colors of the "Save a little" T's. Go to www.theconservancy.com to see more!



Sweatshirts: 50% cotton, 50% polyester. Available in Forest Green.

With embroidered Conservancy logo, \$25

With silkscreen Conservancy logo, forest green: \$20

Men's golf shirt: collar with three buttons, sandstone: \$30

Women's golf shirt: collar with four buttons: pale turquoise \$25

Women's round-neck T-shirt: embroidered, 100% preshrunk cotton: lemon yellow: \$12

Basic unisex T-shirt: 100% cotton, silkscreen logo: moss green: \$12

"Save-a-little T-shirt: 100% cotton **Kids:** :Pink, dusty blue, lime green

Sizes: Youth: S (6-8); M (10-12); L (14-16); XL (18-20). \$10

Adults White, dusty blue, pink, seafoam green, Sizes: S, M, L, XL: \$12.

XXL also available for \$14 in dusty blue and seafoam green

Ceramic coffee mugs with Conservancy Logo \$5 each, set of four: \$20

Baseball caps—embroidered with Conservancy logo, khaki color: \$15

Canvas tote bag with Conservancy logo: \$10

Apron with double-front pocket—forest green canvas-embroidered logo: \$15

65% poly/55% cotton. Treated with stain-resistant finish.

To order: go to www.theconservancy.com or call 231-256-9665

Shipping per order: \$4. Sizes available: Adult S, M, Lg, XL, XXL



L. Mawby's Conservancy: extra-dry sparkling wine. 'Candied fruit aromas... moderately full-bodied... classy, lingering fruit finish.' \$20—\$2 per bottle donated. 231-271-3522. Order online: www.lmawby.com. Also available at Hansen's and Silvertree in Suttons Bay, Leland Mercantile, Cedar City Market and Andersons in Glen Arbor. In Traverse City check out Burritt's, Folgarelli's, Jack's and Blue Goat.

Bellago's Crystal River Cuvee. A blend of Chardonnay, Auxerrois, Vignoles, and other varieties, 50% barrel fermented. Complex, mouth-filling pear, peach, pineapple, and citrus notes, with a touch of oak. 231-228-4800. \$15, \$1 per bottle donated. www.bellago.com. Email info@bellago.com.

Black Star Farms "Horai," a semi-dry Riesling that winemaker Lee Lutes says is a variety that grows well in Northern Michigan and whose characteristics reflect the soil in which it is grown. \$13.50 \$2 per bottle donated. Available at BSF tasting room near Suttons Bay, Leland Mercantile, Silvertree Deli and Michigan Peddler in Suttons Bay, and online: www.blackstarfarms.com. 231-271-4970.

Cherry Republic's Cherry Wine, an off-dry wine, just slightly sweet, made from local Montmorency and Balaton cherries. \$14.50, \$1 donated. Available only at Cherry Republic in Glen Arbor or can be mail-ordered if you live in Michigan. www.cherryrepublic.com. 231-334-3150.



Give a Gift That Lasts Forever!

With the Leelanau Preservers Program, you can give a gift to save land in the name of your loved one. They will receive a beautiful certificate. If you like, purchase one of the gift items at left to accompany the certificate. For more details, go to www.theconservancy.com, or call Gayle at 231-256-9665.



Friends picnic: Spectacular spot, great company!

If you were one of the 500 members who attended our Annual Picnic in August at the Newton Farm, you know what a huge success this event was! On a clear summer afternoon, picnic participants enjoyed one of the most spectacular views in the County which will soon be protected forever. Many



Roger and Coco Newton

thanks to Roger and Coco Newton who generously allowed us to hold the picnic at their farm. In his welcoming remarks, Roger spoke with great feeling about his experience working with the Conservancy to protect his land. "I would recommend that any of you who are con-

sidering protecting your land should not hesitate to work with the Conservancy. They have a great staff and working with them has been a rewarding experience for us," said Roger.

Great music was provided by Sandy Blumenthal and Bryan Poirer who donated their talent and time to entertain the crowd. We are grateful to the over 50 volunteers who helped with set up, clean up and many tasks during the picnic.

Our Silent Auction raised \$23,000 for land protection projects and over 100 people attended pre-picnic field trips and learned more about our mission.

We can't thank enough everyone who donated an item, service or experience to our Auction. You are wonderful! We couldn't have done it without you, or our invaluable Auction Committee (see photo below), co-chaired by Peggy Miller, Lynn Peabody and Annie Frazer.

To view more photos (80!) of the auction and picnic, visit our website: www.theconservancy.com and click on the photo box on the top of the opening page!



Auction committee members at a wrap-up luncheon, l-r: Peggy Miller, Conservancy Communications Director Carolyn Faught, Lou Ristine, Annette Deibel, Marsha Buehler, Lynn Peabody, Conservancy Intern Kate Williams, Judy Frederick. Not pictured: Annie Frazer, Julie Knode, Laura Swires, Molly Harrison, Ann and Herb Nichols.

KIDS TENT A HIT—THANKS TO TEENS!

Over 50 little ones were fed and entertained by many wonderful volunteers. Special thanks to the teens of Northport Point who took shifts playing games and making PB&Js. (These wonderful teens also presented us with a check for \$3000 that night—proceeds from their 3rd annual Triathlon held that same week. What a crew! Funds were des-



ignated for Lighthouse West—640 feet of shoreline near Northport that we're working to protect.) Thanks also to Evy Sussman, who brought leathercraft projects that captivated kids for hours.



EMCEE EXTRAORDINAIRE

Thanks also to Charlie Boesel, who kept picnic goers laughing and bidding all night long. (shown at left with volunteer Sue Corbin)

Want to Help? Join our crew or Donate now for Auction 2005!

Work is underway for next year's auction! Conservancy supporters have already donated: a week's stay at a lovely condo in Destin, FL; a B&B stay and tour in Washington DC, and the Frederick Family is up for repeating their October Dog Party, reportedly one of THE Leelanau social events of the fall season! Everyone, reports Judy Frederick, had a great time—especially the dogs, who were treated to games, doggie treats and allowed to run off leash on 120 acres near Cedar.



Doggone fun! Annie Miller with Lucy and Anna Bahle with Cooper at the October Dog Party.

We are seeking auction offerings for next summer now! If you have something to donate, email Carolyn Faught, cfaught@theconservancy.com. Want to join this fun committee? Also email Carolyn. We'd love to have your help!



Sustainers Circle: Welcome Aboard!

Our Sustainers Circle are those members who make an annual pledge of \$500 or more to support the operations of the Conservancy, giving us the financial stability we need to meet our long-term goals for protecting Leelanau.

Robert Ball and Kima Kramer
Mr. and Mrs. Robert L. Bierley
Mr. Richard Detzer
Dr. Roland & Ms. Diane Drayson
Dr. and Dr. Marc Gallini
Mr. and Mrs. Dan Gordon
Mrs. Doris Greenough
Ms. Lisa G. Hawkins
Mr. and Mrs. Richard Higgins
Curtis Hall & Susan Houseman
Mr. and Mrs. John Meanwell
Dr. and Mrs. David W. Miller
Karen Mulvahill
Patrick and Sharon Oriel
Pyromation
Ms. Polly Rea
Mr. Thomas M. Rooks
Mr. Christopher Stack, Jr.
Mr. Steve Trulaske



Dave and Judy Pohlhod of Omena, who joined the Sustainers Circle last November. The Pohlhods enjoyed the Sustainer Cocktail Cruise in July on the Mishemokwa, one of two special summer events held to honor this group.

Honoring our 10-Year Sustainers



This group joined our Sustainer Circle in 1994, and were honored for their 10-year commitment at Fountain Point. l-r: Chairman Bobbie Collins, George Wellman, Jim & Carol Frederick, Gene and Flo Miller, Judy & Frank Bracken, Chris & Ann Stack.

New Members Key to Our Ongoing Success New Members from 6/9/04 to 10/5/04

Welcome New Members! We are grateful to all who support our Operating Fund with your membership. Without you we could not do all the work that goes into protecting this place we all love so much.

Mr. and Mrs. Kevin Abbey	Ms. Beverly J. Gilmore	Mr. Jack Pace
Mr. James Anderson	Mary Lottes and Richard	Mr. and Mrs. Dan Penning
Dr. and Mrs. Gordon Amidon	Guyette	Dr. Glen Peterson
Ms. Diane Ash	Mr. and Mrs. Thomas	Mr. and Mrs. Clark D. Phelps
Mr. and Mrs. Douglas	Hagopian	Bryan and Lori Poirier
Behrendt	Ms. Dorothy Hanpeter	Mr. and Mrs. James Powers
Mr. and Mrs. Charles R. Beyer	Mrs. Tracy Hayes	Christopher and Paula Prisby
Mr. and Mrs. Stephen G. Black	Mr. and Mrs. Lou Heiser	Mr. Barry Rosenthal
Lois Lynch and Henry Blosser	Mr. Gregory Holwerda	Mr. and Mrs. Michael J. Ross
Ms. Cheryl Cooper	Ms. Marcia Hudson	Ms. Sally Rivard
Ms. Margaret Barber	Ms. Mary Hughes	Mr. and Mrs. Christopher Sack
Mr. William Biedenstein	Mr. and Mrs. Timothy Hutton	Ms. Tamara Samuels
Mr. and Mrs. William Blanton	Mr. Kirk Joseph	Phil and Kathy Scherer
Mr. and Mrs. William E. Brady	Mr. and Mrs. William E.	Ms. Monica Schmit
Mr. and Mrs. Jim Cunningham	Kaufman	Ms. Jennifer Skripac
Mr. and Mrs. Adam Danes	Mr. and Mrs. Jury Lewizky	Mr. and Mrs. John N. Soave
Ms. Carole Donaldson	Ms. Jean Licklider	Mr. and Mrs. Hugh Starks
Mr. and Mrs. Thomas E.	Ms. Nancy Lindborg	Mr. and Mrs. Rhoden Streeter
Donley	Mr. Michael W. Lora	Mr. and Mrs. Stephen
Mr. and Mrs. John Doty	Mr. and Mrs. Herbert Ludwig	Syrjamaki
Mr. and Mrs. Perry Driker-	Ms. Lori Lyman	Mr. Gregory Thompson
Ohren	Ms. Alice Mansfield	Ms. Christine Tiderington
Mr. and Mrs. David Evans	Ms. Karen May	Ms. Robin A. Tilwick
Mr. and Mrs. Henry J. Feeley	Mr. and Mrs. Thomas Metcalf	Ms. Dori Turner
Mr. David Foley	Karen Mikus	Mr. and Mrs. Robert E. Turney
Dr. Bruce Galler	Mr. and Mrs. Douglas Miller	Mr. and Mrs. William Watson
Ms. Julie Gentile	Mrs. Nancy Miller	Mr. and Mrs. Steve Young
Mr. David Giles	Mr. and Mrs. Francisco Nuno	Dr. Robert Zondervan
Mrs. Ginnie Glidden	Mr. and Mrs. Dennis	
	O'Donnell	



MEMORIALS AND SPECIAL GIFTS

(Received between 6/29/04 and 10/27/04)

Gifts are made to the Conservancy in memory of a loved one or special friend, or in honor of an individual or special occasion such as an anniversary or birthday. Gifts may be made to the fund of one's choice, or the family's choice. Family members are sent a special card notifying them of the gift. LP denotes Leelanau Preservers Gift.

SPECIAL GIFTS

IN HONOR OF CHARLIE BOESEL'S 40TH BIRTHDAY

Ms. Susan E. Morgan
Mr. and Mrs. James N. Shad

IN HONOR OF DICK AND HELEN BRANT'S 50TH ANNIVERSARY

Mr. and Mrs. Alan G. Brant

IN HONOR OF JOHN AND MARIE CHRISTIANSON

Ms. Pamela J. Garvey

IN HONOR OF ED AND BOBBIE COLLINS

Mr. and Mrs. Douglas M. Behrendt

IN HONOR OF WILLIAM G. DELANEY

Ms. Maureen J. Delaney-Lehman LP

IN HONOR OF EUGENE AND ELAINE DRIKER

Mr. and Mrs. Perry Driker-Ohren

IN HONOR OF THOMAS AND ALMA EICHSTADT'S 49TH ANNIVERSARY

Mr. and Mrs. Thomas A. Eichstadt

IN HONOR OF THE FETZER FAMILY

Ms. Nancy Lindborg

IN HONOR OF JOHN AND JANICE FISHER'S ANNIVERSARY

Mr. and Mrs. Jeffrey E. Fisher
Mr. and Mrs. Randy Woods LP

IN HONOR OF ED AND JOAN HANPETER

Mr. William Biedenstien
Mr. and Mrs. Bradley T. Hanpeter
Ms. Karen L. May
Ms. Susan P. Ray

IN HONOR OF SENATOR & MRS. JOSEPH HARRISON

Mr. and Mrs. Eugene A. Schoon

IN HONOR OF JOHN JAMESON, III'S 50TH BIRTHDAY

Mr. and Mrs. James N. Shad

IN HONOR OF DICK AND NANA KENNEDY

Mr. and Mrs. David D. Magrini

IN HONOR OF BARBARA A. KISH'S BIRTHDAY

Mr. and Mrs. John A. Kish LP

IN HONOR OF THE LEUGERS FAMILY

Mr. and Mrs. Dennis M. O'Donnell

IN HONOR OF MARY LINTON

Ms. Maureen J. Delaney-Lehman LP

IN HONOR OF L.J. NOLING

Mr. David E. Noling

IN HONOR OF MIDGE OBATA

Ms. Kiku Obata

IN HONOR OF ROB AND MARYLOU RIDAY'S BIRTHDAY

Jack and Barrie Riday LP

IN HONOR OF PHILIP SCHAFF, JR.

Mrs. Mary Alice Schaff

GIVEN IN RECOGNITION OF SO MANY FRIENDS IN THIS COMMUNITY WHO HAVE BEEN THOUGHTFUL AND KIND TO US DURING OUR HEALTH RELATED CONCERNS

Dr. Robert J. Chamberlain

IN HONOR OF DICK AND POSY SHUSTER

Mr. and Mrs. Wilson Van Arsdale

IN HONOR OF STAFF AND DOCENTS

Ms. Margaret Sweet

IN HONOR OF CHRIS WALTERS AND ASHLEA TURNER

Mr. and Mrs. James Kudlack

IN HONOR OF DAVID UNDERWOOD'S BIRTHDAY

Mr. and Mrs. Winston D. Underwood LP

IN HONOR OF ANTHONY & PATRICIA VAHCIC'S 25TH ANNIVERSARY

Ms. Cheryl Free LP
Ms. Laura Spohn LP

MEMORIALS

IN MEMORY OF SAM ADAMS

Mrs. Lena A. Ball
Mr. and Mrs. Edward J. Collins
Mrs. Anne G. Kinzie
Mr. and Mrs. Richard O. Ristine
Dr. and Mrs. Robert L. Willard
Mr. and Mrs. Lewis F. Wood

IN MEMORY OF ALLOA ANDERSON

Mr. and Mrs. Robert K. Anderson
Mr. and Mrs. P. James Bernardo
Mrs. Barbara F. Gentile
Mrs. Mary Ellen Gotshall
Mr. and Mrs. Charles Moffett
Mr. and Mrs. Paul Oltmen
Dr. and Mrs. Robert L. Willard

IN MEMORY OF SUSAN M. ANDERSON

Mr. James J. Anderson

IN MEMORY OF ALICE BERGHOLDT

Mrs. Jane U. Mosher

IN MEMORY OF JOHN BIGGS

Mr. and Mrs. George E. L. Barbee
Mrs. Anne G. Kinzie
Mr. and Mrs. S. Harley Wheeler

IN MEMORY OF JACK AND JEANNE CHESTERFIELD

Mr. and Mrs. David L. Chesterfield

IN MEMORY OF GEORGE COOK

Mr. and Mrs. Perry Driker-Ohren
Mr. and Mrs. Eugene Driker

IN MEMORY OF HELEN ROBERTS CURYLO

West Walker Steel Co.

IN MEMORY OF BUSTER DAME

Mr. Bud Raymond and Ms. Fran Sipple

IN MEMORY OF ARNOLD DEJONG

Mrs. Geraldine Anderson
Mr. and Mrs. LaVerne L. Baxter
Mr. and Mrs. Jerry Binder
Mr. and Mrs. Charles J. Bumb
Mr. and Mrs. Harry Byrne
Mr. and Mrs. Donald Clauson
Mr. and Mrs. Dick Cochran
Mr. and Mrs. Walter Daniels
Mr. and Mrs. John DeJong



MEMORIALS

(Received between 6/28/04 and 10/27/04)

Gifts are made to the Conservancy in memory of a loved one or special friend, or in honor of an individual or special occasion such as an anniversary or birthday. Gifts may be made to the fund of one's choice, or the family's choice. Family members are sent a special card notifying them of the gift. LP denoted a Leelanau Preservers Gift.

IN MEMORY OF ARNOLD DEJONG (CON'T)

Mrs. Peggy J. DeVries
Mr. and Mrs. Alvin DeWild
Ms. Gayle E. Egeler
Mr. and Mrs. Aubrey G. Eggenberger
Mr. and Mrs. G. Elliott
Mr. Roger Favorite
Mr. and Mrs. Lynn Gardner
Ms. Judith Grooters
Mr. and Mrs. Robert G. Hoffman
Mr. and Mrs. Dale Jansen
Ms. Toni Keuning
Mr. and Mrs. Daniel Kolton
Mr. and Mrs. Harry Kuhn
Little Traverse Lk. Prop. Owners Assoc
Drs. Ann and Conrad Mason
Mr. and Mrs. Peter Mondeel
Mr. and Mrs. John Olsen
Mr. Steve Otterbein
Mr. and Mrs. Gregory Pannone
Mr. and Mrs. Brian R. Price
Mr. and Mrs. Philip Refnes
Mr. and Mrs. Robert Rosenfeldt
Mr. and Mrs. Paul G. Rothaug
Mr. and Mrs. Edward D. Schocker
Mr. and Mrs. Isaac Sheppard
Mr. and Mrs. Sam Todaro
Mr. and Mrs. John T. Todd
Mr. and Mrs. Gilly Vander Wal

IN MEMORY OF CLIFFORD DOMKE

Dykema Gossett PLLC
Mr. and Mrs. Roger H. Fitch
Mr. and Mrs. James W. Frederick
Mrs. Molly M. Harrison
Mrs. Anne G. Kinzie
Mr. and Mrs. Charles C. McConnell
Mr. and Mrs. George F. McKisson
Mr. and Mrs. William J. Mead
Raymond James and Associates, Inc.
Mr. and Mrs. Richard O. Ristine
Mr. John B. Watkins
Mr. and Mrs. Harry N. Wieting
Dr. and Mrs. Robert L. Willard
Mr. and Mrs. Lewis F. Wood

IN MEMORY OF RALPH DONALDSON

Ms. Carole Donaldson

IN MEMORY OF ROSELLA DUNFEE

Mr. Frederick F. Dose
Tom and Gretchen Dunfee

IN MEMORY OF MARY FINTON

Mr. and Mrs. Stephen G. Black
Mr. Warren Meeks

IN MEMORY OF WILLIAM FORTUNE

Mr. and Mrs. Thomas H. Ristine
Mr. and Mrs. Edward J. Collins

IN MEMORY OF VALLIE FREYTAG

Ms. Beth Holleman

IN MEMORY OF TIMOTHY GILL

Ms. Marci R. Blood
Mr. and Mrs. Lee A. Bowen
Mr. and Mrs. Dean Bull
Mr. and Mrs. Bruce P. Garland
Mrs. Ernestine F. Johnson
Ms. Joy L. Kalchik
Mr. and Mrs. Michael D. Kirt
Ms. Maxine MacInnis
Mr. Chris Melkild
Mr. and Mrs. Michael E. Ouwerkerk
Mr. and Mrs. Einer Peterson
Mr. and Mrs. Frank H. Solle
Ms. Carol A. Sullivan
Ms. Helen E. Sullivan
Mr. and Mrs. Ronald Tonneberger

IN MEMORY OF WILLIAM HOLMES

Terence and Christine Ibbotson

IN MEMORY OF SARAH HOVEY

Mr. and Mrs. Clinton P. Schloop

IN MEMORY OF EDWARD IBBOTSON

Terence and Christine Ibbotson

IN MEMORY OF JACK JENNEWEIN

Lime Lake Association

IN MEMORY OF NELS AND JOYCE JORGENSEN

Ms. Judy Jorgenson

IN MEMORY OF BRIAN J. KILINSKI

Ms. Sandra K. Kilinski

IN MEMORY OF JOHN LARIGAN

Mrs. Lena A. Ball
Mrs. Marion L. Bischoff
Mr. and Mrs. Frederick W. Bloom
Mr. and Mrs. Edward J. Collins
Mr. and Mrs. Arthur C. Dutton

IN MEMORY OF JOHN LARIGAN (CON'T)

Mr. and Mrs. Homer Evans
Ms. Susan J. Finke
Mr. and Mrs. James W. Frederick
Mr. John H. Hoppin, Jr.
Mrs. Anne G. Kinzie
Mr. and Mrs. Glenway W. Maxon, Jr.
Mr. and Mrs. George F. McKisson
Mr. and Mrs. Richard O. Ristine
Mr. Donald Seifert
Mrs. Carolyn C. Smith
Mr. John B. Watkins
Mrs. Alice B. Weaver
Mr. and Mrs. Robert White
Mr. and Mrs. Harry N. Wieting
Mr. and Mrs. Lewis F. Wood

IN MEMORY OF SHIRLEY LEIKERT

Lime Lake Association

IN MEMORY OF MARGE LITTLE

Mr. and Mrs. Edward J. Collins
Mr. and Mrs. Randy Woods

IN MEMORY OF MELVIN C. LORA

Mr. Michael W. Lora

IN MEMORY OF MARGARET MAXBAUER

Mr. and Mrs. George DeWeese

IN MEMORY OF JAMES MCCORD

Mrs. Amy F. Chatfield

IN MEMORY OF WILLIAM MCLAUGHLIN

Lime Lake Association

IN MEMORY OF BRUCE E. MILLER

Mrs. Nancy Miller

IN MEMORY OF EUGENE MORGAN

Ms. Patricia Harkness
Mr. and Mrs. William J. LeGray
Mr. and Mrs. Shawn Paszkiewicz

IN MEMORY OF JOANNE MORGAN

Mr. Bud Raymond and Ms. Fran Sipple

IN MEMORY OF DONALD PATTERSON

Mrs. Amy F. Chatfield

IN MEMORY OF PHILIP J. PHILLIP, JR.

Mr. and Mrs. John C. Erb



MEMORIALS

IN MEMORY OF VIRGINIA PRICE

Dr. and Dr. Vincent E. Price

IN MEMORY OF OUR GREAT GRANDPARENTS DAN AND MARY PRUGH

Peter and Lily Benjamin

Emma and Meredith Herbruck

IN MEMORY OF RALPH REAHARD

Mr. and Mrs. Wilfred J. Larson

Mr. and Mrs. Richard O. Ristine

IN MEMORY OF HEBBY RICHARDSON

Mr. and Mrs. Reed E. Bartlett

Mr. and Mrs. Frederick W. Bloom

Mr. Charles M. Boesel

Mr. and Mrs. Milton C. Boesel, Jr.

Mr. and Mrs. Frank A. Bracken

Mr. William W. Bryant

Mr. and Mrs. Larry Byerly

Mr. and Mrs. Ernest H. Clarke

Mr. and Mrs. Edward J. Collins

Mr. and Mrs. Edward G. Dunn

Mr. and Mrs. Arthur C. Dutton

Mr. and Mrs. William L. Elder

Mr. and Mrs. Thomas F. Evans

Ms. Heidi Farber

Ms. Susan J. Finke

Mrs. Ann G. Fullerton

Mrs. Barbara F. Gentile

Ms. Mary Higgins

Mr. and Mrs. Earle S. Irwin

Mr. and Mrs. Charles W. Kepler

Mrs. Anne G. Kinzie

Mrs. Jean Larigan

Mr. and Mrs. George A. Lemcke

Mrs. Karen C. Martin

Mrs. Kathryn A. Mewhort

Mr. and Mrs. Lawrence J. Noling

Mr. and Mrs. Thomas W. Paine

Melanie Parke & Richard Kooyman

Mr. and Mrs. Robert G. Poole

Mr. and Mrs. James T. Poor

Mr. and Mrs. James N. Shad

Mr. and Mrs. Leo G. Shea

Mr. and Mrs. Edward H. Sichler

Mrs. Carolyn C. Smith

Dr. and Mrs. David J. Smith, Jr.

Mr. and Mrs. Ralph Smykal

Ms. Tamara Stahle

Mrs. Gloria C. Steel

Mrs. Alice B. Weaver

Mr. and Mrs. William J. Webb

Mrs. Mary H. Wenstrup

Mr. and Mrs. Harry N. Wieting

Mr. and Mrs. Randy Woods

Ms. Mary Zeigler

IN MEMORY OF GORDON ROBERTSON

Owen and Leila Bahle

Mrs. Lena A. Ball

Mr. and Mrs. Frederick W. Bloom

Mr. and Mrs. Lee A. Bowen

Dr. and Mrs. R. John Bull

Mr. and Mrs. David Cairoli

Mr. and Mrs. Edward J. Collins

Mr. and Mrs. Gilbert A. Deibel

Mr. and Mrs. D. Preston Dozier

Mr. and Mrs. Martin M. Easling

Mr. and Mrs. Howard G. Eisenhart

Mr. and Mrs. Roger H. Fitch

Mr. and Mrs. Tom H. Fox

Mr. and Mrs. James W. Frederick

Mr. and Mrs. James C. Ganter

Mrs. Barbara F. Gentile

Ms. Lynn Grace-Roberts

Mr. and Mrs. Dan S. Harkness

Mr. and Mrs. Alfons Heckl

Mrs. Anne G. Kinzie

Mrs. Mary E. Lyons

Mr. and Mrs. Robert A. Maynard

Mr. and Mrs. Leon B. Michael

Craig A. and Nancy T. Miller

Robert and Ellen Pisor

Mr. and Mrs. Brian R. Price

Mr. and Mrs. Richard O. Ristine

Mr. and Mrs. Marvin C. Rorick

Mr. and Mrs. Leo G. Shea

Dr. and Mrs. John G. Suelzer

Mr. and Mrs. Harry N. Wieting

Dr. and Mrs. Robert L. Willard

Mr. and Mrs. Randy Woods

Chapter EM, P.E.O. Sisterhood

IN MEMORY OF MRS. ROYCE

Ms. Karen C. Mikus

IN MEMORY OF ARTHUR RYMAL

Berkfield and Co. Ltd.

Butala, Simmons, Camileri and Pate, PC

Mr. Michael Fisher

Robert Heroux and Catherine Susan

Mr. and Mrs. David P. Lusch

Royal Oak PDQ Printing, Inc.

Mr. Robert F. Serbin

IN MEMORY OF DR. NORMAN SCHMITT

Mr. Joseph E. Faggan

IN MEMORY OF DAVID A.H. SMITH

Mr. and Mrs. Timothy C. Wilcox

IN MEMORY OF ELLEN MAURINE SMITH

William Smith & Sally Berlin

IN MEMORY OF BRYCE SUTFIN

Mr. and Mrs. John S. Sutfin

A tribute to Gordon Robertson



Gordon Robertson passed away in early September after a long battle with Lou Gehrig's disease. Gordon served on the Conservancy's board from 1991 to 2000, including serving as Chairman for the final 3 years of his tenure on the Board.

Many of the Conservancy's friends will remember Gordon as a thoughtful champion of conservation in Leelanau County, and a tireless worker for a healthy environment and healthy communities. Gordon not only provided guidance and leadership, but he was always willing to pitch in on any worthy project. For instance, in addition to tirelessly working to create and raise the needed funds for the Leland Village Green, Gordon could often be seen checking the sprinklers or cleaning up the Green. He felt it was so important to the small town feel of Leland.

At the time of his death Gordon was the Honorary Chairman of the Leelanau Conservancy, a sign of the great regard that the Board had for its former Chairman. His accomplishments will always be remembered in Leelanau County.

IN MEMORY OF MILLIE TAGLAUER

Ms. Bonnie M. Taglauer

IN MEMORY OF ETHYL THORS

Ms. Mary K. Levi

IN MEMORY OF DOROTHY TIMMIS

Dr. and Mrs. Daniel Silvasi and Family

IN MEMORY OF MARY LOUISE VAIL

Edward & Caroline G. Oberndorf

IN MEMORY OF BONNIE VERSLUIS

Mr. and Mrs. Ernest Miedema

IN MEMORY OF BEN WHEATLEY

Ms. Gayle E. Egeler

Mr. and Mrs. Brian R. Price

IN MEMORY OF SUZANNE WILSON

Ms. Beverly J. Gilmore



**This Holiday Season,
Make Someone You Love a
Leelanau Preserver and give
a gift that lasts forever!**

OFFICERS and DIRECTORS

OFFICERS

Richard O. Ristine, *Honorary Chairman*
Barbara E. Collins, *Chairman*
Craig Miller, *President*
Deborah W. Fellows, *Vice President*
Frank Siepker, *Treasurer*
Mary E. Lyons, *Secretary*

DIRECTORS

Richard Brant	Molly Harrison
John Bull	Barbara Nelson-Jameson
Jack Burton	Mary E. Lyons
David Cassard	Larry Mawby
Jeff Corbin	Jack Seaman
Tom Dunfee	Mary Taylor
John Erb	Warren Watkins

STAFF

Brian Price, *Executive Director*
bprice@theconservancy.com
Susan Price, *Assoc. Dir, Finance, Admin*
sprice@theconservancy.com
Matt Heiman, *Land Protection Specialist*
mheiman@theconservancy.com
Tom Nelson, *Land Protection Specialist*
tnelson@theconservancy.com
Meg Woller, *Stewardship Director*
mwoller@theconservancy.com
Carolyn Faught, *Communications Director*
cfaught@theconservancy.com
Gayle E. Egeler, *Membership and Outreach Coordinator*
gayle@theconservancy.com
Arlene Heckl, *Office Administrator*
aheckl@theconservancy.com
Natasha Lapinski, *Land Protection and Development
Coordinator*
nlapinski@theconservancy.com



When you give to the Leelanau Conservancy's Land Preservation Fund you can preserve land in a child's name, and instill in them at an early age that they have a stake in what Leelanau is to become. You can also give a gift to friends or family who live far away, but have Leelanau in their hearts. Or, preserve land in your own name. See page 14 for details, go to www.theconservancy.com, or call Gayle: 231-256-9665.

Leelanau Conservancy

105 North First Street
P.O. Box 1007
Leland, MI 49654
231-256-9665 FAX 231-256-9693
conservancy@leelanau.com
<http://www.theconservancy.com>

Non-Profit
Organization
U.S. Postage
PAID
Leland, MI
Permit No. 5

