



Leelanau Conservancy

*Conserving the Land, Water and
Scenic Character of Leelanau County*

Approaching our 20th Year!

Newsletter: Fall, 2007

Vol.18, No. 3

A Deck and a Dream

by Brian Price

In the summer of 1988 I sat down with Ed and Bobbie Collins in their backyard in Leland to talk about plans for a fledgling organization called the Leelanau Conservancy. While the "Conservancy" was already incorporated, it existed as an idea, a dream really, in the minds of its founders. I cared deeply about Leelanau County and didn't want to miss an opportunity to talk with a couple who aimed to make a difference in the way the county was growing.

It turned out that Ed and Bobbie were way ahead of me, of course, in thinking about how a "Land Conservancy" could help protect the essential character of one of the loveliest landscapes in Michigan. They had approached several respected community members to form a board, and had put down thoughts on how the Conservancy would go about preserving the character of the peninsula. They had even purchased a little gray home in Leland that would house the organization.

We talked about the Nature Conservancy and its approach to conservation, about the pressures of development, about specific properties that seemed to embody what we all think of as "Leelanau." Ed and Bobbie were good enough to indulge my discussion of a study of local glacial features.

Soon after, Ed called to arrange a follow-up meeting. Getting right to the point, he offered me a job. It was early summer. We agreed that I would undertake two projects in my first months on the job. Thinking back on it now, these two projects still have something meaningful to say about the organization and its founders. And all I needed to get started was lumber and tools, a typewriter and a filing cabinet. I'll explain.

My first two endeavors have come to symbolize our approach to land conservation. The lumber was used to build a deck on our building at 105 First Street in Leland. The Collinses felt that our success would rest on bringing the right people together, perhaps over a glass of wine or iced tea, in a congenial setting, to discuss and work out solutions to problems vexing the county. They had experienced some of the early battles over development that took place in the mid-80's and concluded that there were people of good will on all sides. What was needed



From our earliest project files: Kehl Lake Natural Area preserved in 1990, which has since been twice expanded.

was a way to bring these people together in a constructive, rather than adversarial, setting.

The deck served its purpose, hosting the founding and dedication of our office in October, 1988. The Watershed Council was founded from an initial meeting on the deck, and numerous early land projects were launched by talks with neighbors who we met with on the deck. While the deck was made of hard materials, it represented the "soft" side of our approach. We wanted to bring people together to seek solutions.

To accomplish my other project a different set of tools was required. Upstairs in the empty office space I stretched a closet door across our two filing cabinets, brought in my old Smith-Corona, and a plat book. Soon I had located a set of property tax books for the county. What a find! Once I learned how to locate parcels of interest, I could discern the exact dimensions of any lot in the county. And with the aid of aerial slides, I could make a passable hand-drawn map with natural features shown to scale.

My job was to build an initial set of project files about land that, for lack of any further definition at the time, a conservancy should be interested in preserving. The parcels I looked at contained the highest quality habitats for plants and animals in the county. Other places were simply beautiful,
(continued on page 2)

NEW BOARD
MEMBERS
P 2

DEYOUNG
FISHING PIER
P 4

WHY LEELANAU
JOURNAL
P 8

FARMLAND
NEWS
P 3

POST PICNIC
EXPERIENCES
P 9

VOLUNTEER
OF THE YEAR
P 10

HIKES
AND EVENTS
P 14

President's Message



We welcome new board members Susan Green, Jim Nugent and Kathy Ricord

Unlike traditional beliefs that the autumn of the year is a depressive time, I find that for me, fall is a wonderful opportunity to reflect on the events and accomplishments of the past year and focus on goals and plans for the future. At the Conservancy we seem to take on the role of reflection and planning as well. Autumn brings our annual fiscal year-end meeting of the board, a November strategic planning retreat to continue our efforts in land protection and the welcoming of three new members to our board of directors.



This hardworking, thoughtful group now numbers 21 strong. (We say goodbye to Chairman Frank Siepker and Director Deborah Wyatt-Fellows. Their nine years of admirable and important Conservancy work have lent much to our success.)

Our new board members bring years of experience in management and leadership in areas of philanthropy, farming and the corporate world. More importantly, these new faces bring a continuing devotion to the mission of the Conservancy and a passion to protect this special place.

Susan Green and her husband, Jeff, live in Leland Township. Susan recently retired from Indiana University where she was Executive Director of Development and Alumni Programs for the College of Arts and Sciences. Susan brings a wide variety of talents to our board, especially in philanthropy.

Jim Nugent is no stranger to Leelanau. He recently retired as Director of the MSU Horticultural Research Station and continues to farm. Jim's expertise in all aspects of farming will be instrumental in our efforts to preserve farmland. Jim and his wife, Toddy Rieger, live in Suttons Bay Township.

Kathy Ricord is newly retired from her position as Chief Marketing Officer at Nationwide Insurance Co. She and her husband, Lou, live in Empire. Daughter Bonnie is a freshman at Glen Lake High School. Kathy brings years of management and leadership skills to our board.

Perhaps most important, each of these three new board members shares our love of Leelanau County and a passion to protect the best of what we have here.

As we move toward 2008, I continue to be amazed by the caliber of our staff and the ever-increasing level of commitment of our board and our donors. It's great to be a part of all the good work going on at the Leelanau Conservancy—work that can only happen with the support of people like you.

Enjoy the season,

Tom Dunfee

Continued from page 1

and in our judgment they defined what Leelanau was all about. Some places were obvious, others obscure. Some of the property owners were eager to work with us, others were unapproachable. It was my job to build a body of information from which to launch an array of signature projects. We were aware at the time that the community would judge us by what we did, not what we said. Our first few projects would be critical.



Our first two projects, the Cedar River and Kehl Lake Natural Areas, came from those files. And other now-familiar names were included as potential projects: Whaleback, Houdek Dunes, Crystal River, the DeYoung Farm, and Belanger Creek to name a few. Sadly, some of our earliest dream projects have been forever lost; we could not save them.

To me it was clearly the best job in Leelanau County. In the morning I might think about the most remote swamps or the highest hills, or that hidden jewel of a flowing spring that pops out of a hillside somewhere in the county, and by afternoon I'd be checking it out, making notes about the wildflowers and forest cover, about geological features, along with access and ownership issues, and what I perceived to be the "community values" that could be protected by a land conservancy.

Nineteen years later I sit in the same room in the same house at 105 N First Street. My four children, who were just babies when we launched the Conservancy, are now off in college or graduate school. I have a real desk now and our projects are tracked with extensive digital and paper files. The work I once did exclusively is now handled largely by Matt Heiman and Tom Nelson, our Land Protection Specialists, who are currently juggling more than a dozen land transactions. If they all close, we will protect up to 1,000 more acres by year end. And we await word on a major grant request for the DeYoung Natural Area, a project that was 18 years in the making.

Although the deck fell victim to a 2005 office expansion, we still are an organization where people who care deeply about Leelanau County can find common ground. And while my original files only surface from time to time, we are still working to fulfill the vision that the founders set forth.

In 20 years the Conservancy has grown from a dream to a respected community institution. We are still working to fulfill the vision that our founders set forth, but now with over 5,400 acres protected to show for the effort. As we enter the next 20 years, we'll continue to gather people together, building bridges and project files. We invite you to join us as we develop a common vision for preserving what we all love about Leelanau County. Here's to the next 20 years!



Protecting Local Farms: A New Direction

by Dan Scripps

In our last newsletter, we focused on the stakes of protecting our local farms – farms that collectively represent a globally unique resource under intense development pressures. In this issue, we follow up by pointing a new direction forward and including some of the measures we'll be using to protect our working farms and offer more options to the families who farm them.

More options for local farm families

For farmers, their farms are their business. To be successful, therefore, any program to protect Leelanau farmland must focus on how our land protection tools can help these businesses stay profitable. We must show local farmers that land protection and farm profitability are two sides of the same coin. After all, as one Leelanau County grower put it in a conversation while overlooking his orchard, "What good is protecting farmland if farmers can't make a living?"

Working to meet these needs will be at the heart of the Conservancy's new farmland protection program. This focused approach to keeping land in agriculture will provide more information on everything from how to make farming more profitable to planning materials on "How to Save the Family Farm." In addition, we will offer more options for land protection as well. Importantly, these new options are coming from the farm families themselves. When a farmer says "This land is my 401(k)," we can respond by showing how an easement can meet his long-term financial goals. When growers tell us that they have no intention to sell their orchard but don't want to lock in their kids, we can offer a term easement that protects the land from development in the short-term while preserving options for their families. And when farmers are ready to retire, we can show them how an easement can allow them to leave an inheritance to children who want to continue farming as well as to those who do not.

By listening to farmers, understanding their concerns and offering a flexible program that meets their needs, we hope to protect far more farmland than a one-size-fits-all program ever could. More than that, we hope to add value to these farm businesses and allow local families to keep farming.

A regional approach to a regional challenge

Because much of the infrastructure on which Leelanau County farmers depend is regional in scope, the Conservancy will also help organize and lead efforts to address the economic sustain-



Conservancy Program Research Associate Dan Scripps gets input from Suttons Bay farmer Jim Nugent as part of our effort to understand the farm community's concerns.

ability of farming in Northwest Michigan. Other regions of the country have found that by bringing together the wide variety of groups active in promoting agriculture, agreeing upon shared goals for the region, and fostering the cross-fertilization of ideas among community leaders, keeping farms in business becomes a community priority. By working together, different organizations are able to achieve results that were previously impossible even to imagine. This approach – working regionally to protect our local farms – is central to conserving the land, water and scenic character of Leelanau County.

Promoting local giving to protect local farms

Finally, the Leelanau Conservancy will also work to build a local philanthropic commitment to protect our working farms. To ensure that local donors can leverage their gifts for maximum results on the ground, we will structure this community farmland fund so it can be complemented by other funding sources, including what promises to be an improved federal farmland program as part of the Farm Bill currently being debated in Congress.

While there are no easy answers to protecting farmland, the Conservancy is going beyond anything that has been done before in designing a model program to protect Leelanau's working farms. In planning this new way forward, we have kept these goals in mind, and we're confident we've found a network of innovative ways to achieve them.



NEWS AND NOTES FROM LEELANAU CONSERVANCY'S NEWEST NATURAL AREA

A New Approach for Funding the DeYoung Natural Area

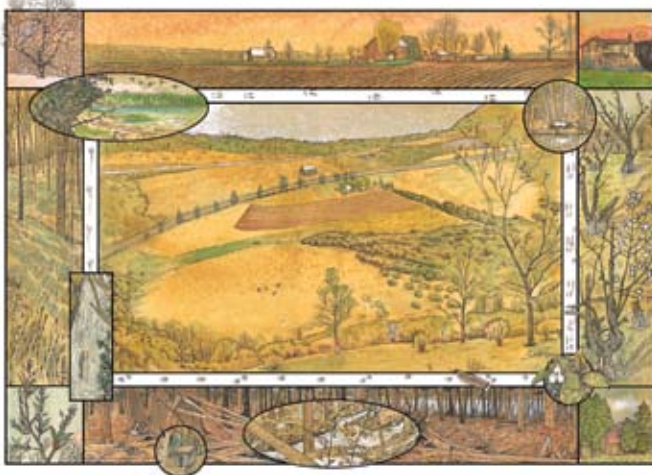
Two years ago, we had a big decision to make: purchase the 145-acre historic DeYoung farmstead in Elmwood Township outright at a project cost of \$2.1 million, or lose the opportunity forever. "We knew it would be harder to raise money, both from donors as well as funders like the Michigan Natural Resources Trust Fund (MNRTF), once the threat of its sale was removed, but we had no choice," says Director Brian Price. "It's far easier to raise money for a project when you have not yet closed on it. However, we were determined to protect this property, and our commitment to do so has not wavered."

The Conservancy has raised \$745,000 of its \$1 million public fundraising goal, and applied to the MNRTF for a \$1 million grant to complete the \$2.1 million project. In August we learned that we would need to restructure our grant application to the Trust Fund, and would likely receive less than hoped for. We wrote the grant in partnership with Elmwood Township, which will be the ultimate recipient of the money. (The Trust Fund only allocates funds to governmental units.)

Originally the Conservancy's plan was to apply for the \$1 million grant so that Elmwood Township could receive the funds, and then the Township would buy a conservation easement over the DeYoung Natural Area from the Conservancy. Under this plan, we would have retained ownership and all management and liability responsibilities. The Elmwood Township Board voted in favor of this approach.

Key members of the Trust Fund Board, however, indicated that they are more comfortable with the way projects like this have traditionally been structured: where a conservancy steps in to take critical land off the market, then sells it to a willing, local unit of government. So the Conservancy had to go back to Elmwood Township and ask their permission to restructure the grant application. The new terms: the Conservancy would sell Elmwood Township 65 acres between the shoreline and Cherry Bend Road. The township would be the owner, but we would still, as originally planned, manage the property based on a plan agreed to by both parties. "The township's motivation for owning this property is to create a beautiful public resource," says Price. "The agreement with the township and Trust Fund will include restrictions that prevent development." We would also assume liability, as we do with our other natural areas.

The township board voted 6-1 in favor of resubmitting the application. We revised the application and, if approved, will provide \$910,000. "While the funding picture on this project has shifted, our commitment to protecting this land for future generations remains. I'm hoping we'll be in a position at the end of the year with just \$500,000 left to raise" says Price. "Plans for the 80 acres on the upland portion of the property remain the same as well—to preserve it forever." The MNRTF announces its grants in December. Keep your fingers crossed!



Donors of \$1,000 or more to the DeYoung Natural Area Fund will receive an 18" x 24" limited edition giclée print of the pen & ink DeYoung watercolor drawing by renowned local artist, Glenn Wolff. Donors of \$500-\$999 will receive an 11" x 17" signed, limited edition poster.

(We have been working to deliver posters & giclees personally over time. If you don't yet have your copy and would like it soon, please contact us to arrange for pick-up or delivery!)

Let's Go Fishing!

It's in! Our new T-shaped fishing and wildlife observation pier at the DeYoung Natural Area on Cedar Lake was installed in mid-August. When director Brian Price visited the 24-foot by 30-foot pier a few weeks later, he wrote the following in an update letter to DeYoung donors. (Brian was with Linda Hegstrom of the Michigan Natural Resources Trust Fund, to whom we have applied for funding on the project.)

"It was a gorgeous September day as we ambled along the Cedar Lake on our short walk to the pier. There were two groups of people fishing—one older couple and three kids, about middle school age. I turned to the nearest fisherman and asked the question that is always asked in such circumstances: 'How are they biting?' The young angler responded by saying that he had 'only caught a couple small ones today,' but had landed a nice pike the day before. Interested, and knowing that the dock had barely been in place for a week, I asked how many times he'd visited the fishing pier. 'I was here yesterday, I'll stay until supper, and I'll be here tomorrow and every day I can until school starts next week,' he said.

As I turned toward the older couple, the man asked if I knew who "was responsible" for the decision to put the dock in. Having a bit of experience in these matters, I think I braced myself a little bit for a likely suggestion about how we could have done it better, or perhaps a helpful suggestion about rules for use or some safety issue. But he went on: "I just want to personally thank whoever decided to do this." He added that he had grown up in Frankfort, has lived in the area all his life, and noted that there are only a few places where anyone who doesn't own a boat can enjoy a day on the lake and a chance to catch a few fish. His wife, sitting on a bench, seemed perfectly happy to soak up the sunshine and enjoy the view, without fishing. She also said how thankful she was for the opportunity to "spend the day on the lake."

As Linda and I walked back through the cedar woods towards the parking lot, I laughed, and assured her that we had not planted these people here just for her visit. But I would admit that, seldom in all the years that I have worked for the Conservancy, have I felt more assured of the basic 'rightness' of our work. It means that much to people. And as to finding the 'people who should be thanked,' one should look further than the board and staff of the Conservancy, because this is a community effort that includes donors, volunteers, township officials and especially the Oleson Foundation. Any thanks should extend at least that far."

Know when you go: The new pier has stations designed for easy access by small children or people in wheelchairs. A hard-surface trail and boardwalk leading to the pier from the TART Leelanau Trail is in the works, but won't be built until



The new fishing and wildlife observation pier has seen a lot of action since it opened in August.

Casey Heiman, 3, casts a line.

funds can be raised. To get to the fishing pier, park at the big barn parking area off Cherry Bend Road in Elmwood Township. Cross the TART trail and carry your fishing poles to the Cedar Lake Trail, which leads down to the lake (less than 1/4 mile). "Cedar Lake is an ideal place to bring kids to fish," says avid fisherman and staffer Matt Heiman. "There are a lot of pan fish here and chances are good that kids can put in a line and get a bite within a reasonable amount of time." He adds that the pier was deliberately placed in an area with great fish habitat. "This will be a very sweet spot for families to come and have a great time--and a great option for those who don't own a boat or just want a pleasant experience in a productive fishing spot."

DeYoung Fundraising Progress Report:

Project cost:	\$2.1 million
Raised to-date:	\$744,698
Pending grant applications:	\$910,000
Balance to raise:	\$445,302



DeYoung Trail Stewards Jim and Diane Gilbo Pitch In

Jim and Diane Gilbo have spent the last 25 years in Leelanau County. Jim served as the Engineering Manager of the Leelanau County Road Commission for many years, while Diane worked as the Radiology Manager at Munson Medical Center. Today, they live near the Leelanau Trail, about a half-mile from the DeYoung Natural Area in Elmwood Township.



In recent years, Jim and Diane have spent a great deal of time walking, biking and skiing the Leelanau Trail with their dog, Sam. When the Conservancy announced the option to purchase the DeYoung property (and enhance those walks with new trails!), Jim and Diane Gilbo were among the first volunteers to join the Planning and Fundraising Committees. Since then, Jim has spent hours helping to clean up the farmstead and eradicate the invasive species glossy buckthorn. Diane regularly helps us spread the word by placing DeYoung information at

various places around town. On their daily walk, they take care to refill our information boxes at the property; and for the past two Tour de TART events, they have greeted hundreds of cyclists visiting the DeYoung water stop. They have also supported the project with a generous financial gift.

Perhaps most importantly, the Gilbo's help keep us apprised of what's happening "on the ground" at DeYoung, from trail mud holes that need patching to feedback they hear from visitors. "It's such a neat project," Jim says. "Today, when we walked the Cedar Lake Loop, we stopped at the new pier. There was a couple there, enjoying the view, and we spent some time getting acquainted." The visitors were natives of the Township, but this was the first time they had visited the natural area. "They were so excited!" Jim explains. "They thought it was so neat to have the new fishing pier where everyone can enjoy it."

We think it's so neat to have your help in all its forms, Jim and Diane. Thank you.

Please help us steward a Conservancy Trail that is dear to you! Contact Jenée Rowe at 231-256-9665.

Trails, Hardwood Forest Envisioned for DeYoung Upland

An innovator at heart, Louis DeYoung was among the first farmers in the area to switch his operation from horses to tractors. When he grew tired of waiting for power lines to be installed on Cherry Bend Road, he figured out how to run light bulbs in his home by linking them to a stream-powered water wheel in his machine shop. And in 1939, he became one of the first in the region to try his hand at cultivating that fruit we all know and love so well – the cherry.

The cherry orchard on the DeYoung Farm proved prosperous for Louis's family for nearly 50 years. Cherries helped put both of Louis' children – a son, Ted, and daughter, Pat – through college. Unfortunately, in the late 1980's, many of the trees died in an effort to rid them of a disease called brown rot. The cherry harvest ended soon thereafter, but the ghost orchard remained for nearly two decades.

When the Leelanau Conservancy purchased the DeYoung property in late 2005, we promised neighboring farmers we would remove the old trees, in an effort to stop the spread of pests and disease to nearby orchards. This summer, eight acres of trees were removed and burned. We owe great thanks to KAL Excavating for doing such a terrific job – and for their generous donation of in-kind labor.

Twenty acres of a pesky plant called autumn olive, which

had invaded the orchard, were also removed this summer. In the spring, we will maintain the restoration area and plant a soil-building cover crop. We are grateful to the Forest Land Enhancement Program and the Leelanau Conservation District for facilitating this critical work!

This exciting progress brings us closer to our ultimate goals for the upland, including the creation of a trail system that winds past active agricultural fields, the restoration of wildlife habitat with native species, and establishment of buffers for the upland streams.



Youth Corp kids planting tree seedlings. Future plans include restoring forests in the upland.



What's Next?

To date, we have completed a great deal of work to facilitate public access, including laying the new trail, installing the fishing pier, and completing critical stabilization of farmstead buildings. As a result, people have begun to explore and enjoy this tremendous property.

We envision much more for the future, including upland trails, habitat restoration, active agriculture and the preservation of the historic farmstead buildings. However, now we must focus all our efforts on completing the acquisition of the property. Further work on new trails and building renovation must await the happy day when we pay off the property mortgage. [Please help! Make a gift today.](#)

What We Need and How You Can Help!

- Donations, large and small. Please help us meet our \$300,000 challenge by year-end!
- Volunteers to remove invasive species (cut, drag, be outdoors!)
- Volunteers to distribute flyers and newsletters, and to help with events, such as the photo exhibit (see right)
- Material and labor to repair the machine shop roof
- Shade trees for drinking fountain area
- \$100/\$500 gift card for work bee tools
- Trail utility vehicle
- Trailer (even to lend when needed)

DeYoung NA is Home Grown!

Playful NEW T-shirts make great local gifts.

Front: "All in Your Own Backyard" with DeYoung "Preserved Naturally!"

Back: "Seasoned for Life by the Leelanau Conservancy" "Ingredients: Sunshine & Songbirds, Trails & Forests, Bobcat & River Otter, Lakeshore & Streams, Brook Trout & Small Mouth Bass, Sunflowers & Farm Fields, Barns & a Farmstead, YOU!"

Adult (\$15) and **Youth** (\$12) sizes –50% of purchase price supports the DeYoung project. Shirts are available at the Conservancy office, or online at www.theconservancy.com/store.php



Shoot!

Twenty-one students and five adult photographers, ages 9 - 65 years, produced nearly 2,500 images of our DeYoung Natural Area. Photos were taken May through August 2007.

The assignment: document DeYoung's natural beauty, cultural history and rich opportunities for "hands-on" learning, highlighting the property's contribution to Leelanau County and the region as a whole. The photographers used their skills to capture views of DeYoung that most people don't see. Images selected for the exhibit share the students' unique views about DeYoung's as a special place, both regionally and in time, in a variety of daily climatic conditions.



Kids with cameras capture the spirit of the DeYoung Natural Area!

The DeYoung Natural Area Photo Exhibit is a project of the Leelanau Conservancy and was organized and led by Suttons Bay High School art teacher and photographer Scott Tompkins.

The student photographers whose work will be exhibited include: Anna Bahle, Tristan Peabody, Betsy Boree, Gabi Whaley, Elizabeth Adams, Emma Kelly, Hannah Walton, Lenora Paige, Lizzy Freed, Lucy Perkins, Lydia Patterson, Megan Morrissey, Tyler Shumway, Hunter Bell, Luke Kermode, Mara Popp, Mary Rexroat, Zac Kalchik, Alex Burch, Harrison Burch, Morgan Thompson and Samantha Mudget. Schools represented by these students include: Leland, Suttons Bay, St. Mary's of Lake Leelanau, West Junior High, Westwood Elementary, Willow Hill Elementary, home school, and the Montessori Children's House in Traverse City.

See the DeYoung Photo Exhibit at the Old Art Building in Leland Nov. 9-11. Opening reception Nov. 9; 5-7 p.m. Exhibit hours: Fri. 1-7 p.m.; Sat. 10 a.m.-4 p.m.; Sun. noon-5 p.m. In December, the exhibit will move to a new location, to be announced. Thanks to Northwestern Bank and Richard and Marion Grout for sponsoring this exhibit.



The "Why Leelanau? Journal" - Give us Your Thoughts and Photos!

We're hoping that many of you will write to tell us your story too! See the back page for details on how you can help us celebrate our 20th Anniversary by being a part of our online Leelanau Conservancy Journal. We'll begin posting your stories, thoughts and photos like the one that follows, beginning in January 2008.



I love this barn that I always see on my way to Leland at the high point of County Road 626. Joe Sedlacek was a friend of our family and one day when I was about six or seven, he was

talking to my Dad about his farm and milking his cows. I was wide-eyed. Joe saw me and said I could come by and milk one myself. Well, that was just too exciting for a young girl! So we went over one evening and Joe – who probably was 65 or so at the time – showed me how to milk a cow. It was hard, it was awkward, it was a tinch scary because the cow was so big and she was not necessarily open to my ministrations. But Joe was kind and patient with me and I managed some milk in the tin pail. It was my first time in a working barn and it was a thrill. I think of this experience every single time I drive by and am grateful for the kindness shown me almost 50 years ago and the beauty of the barn – especially how it stands out against the crops and the sky. That moment created important memories that have stayed with me all these years – and they are reinforced by the images of the farmland and barns throughout the County. I am sure I wasn't the only one Joe taught to milk a cow nor was he the only farmer who took young kids under his wing either. Where would we be without these experiences and memories?

~Cathy Stephenson, Omena and Chicago

Our Role in Building a Better Farm Bill

Over this summer, one of the major policy issues facing Congress has been its periodic reauthorization of the Farm Bill, the legislation that sets federal agricultural policy for the next several years. In addition to the subsidy and trade provisions that regularly occupy the headlines, the Farm Bill is also home to a number of conservation provisions that historically have provided some funding for the protection of farmland and other environmentally significant natural resources.

The Leelanau Conservancy has played a significant role in shaping this legislation, and we've received a tremendous response from our federal officials. This spring, Brian Price and Dan Scripps attended meetings organized by Senator Debbie Stabenow to discuss issues connected to the Farm Bill. These meetings allowed us to share our particular concerns and ideas directly with the Senator, who plays a key role in the Farm Bill debate as chair of the Conservation Subcommittee of the Senate Agriculture Committee.

We also had the opportunity to meet with Chris Adamo, Stabenow's farm policy advisor, when he visited Leelanau in August. Chris spent much of the afternoon with our staff discussing how some of the conservation provisions being debated would affect us. This visit also included a trip to Jim Bardenhagen's farm, one of three Leelanau County farms – totaling more than 400 acres – up for protection this year under the federal Farmland and Ranchland Protection Program.

Our Congressman, Dave Camp, has also given the Conservancy the opportunity to help shape the new Farm Bill. As the House version of this legislation was being debated on the floor in late July, Camp's legislative director asked us to comment on several potentially damaging amendments. We responded, and Camp voted to protect the conservation programs in the bill from a number of attempts to weaken them. The version of the Farm Bill that passed the House represents a significant victory for conservation's role in federal farm policy, including a tripling of funding for the federal farmland protection program, as well as language that makes this program much easier to use.



Make no mistake: the attention paid to conservation programs in the Farm Bill can have a major impact here in Leelanau. In addition to our past successes, our current work in creating a new program to protect our working farms will continue to make active use of these federal programs. The fact that Stabenow and Camp have actively sought out the views of the Conservancy as the Farm Bill is being debated means that local views are being built into national policy – something that could mean more funding for agricultural easements, more options for local farmers, and more protection of Leelanau County farmland.



"We stood there and overlooked the rolling hills and both bodies of water at this gorgeous spot. You could just feel it in your soul."

Annual Picnic and Auction Raises More than Funds

When our auction committee began meeting last February, it came up with a great idea: offer experiences to people that would bring them closer to our mission. Experiences that highlight how special Leelanau County is—excursions or dinners that money CAN'T buy, except through our auction! Well, it worked. The August event, held at Woolsey Airport, drew some 700 supporters and raised over \$100,000 to help us with our land protection efforts in Leelanau County.

But the picnic and auction raised more than funds. In addition to showcasing local foods (see pg 10), people have since toured apple orchards, lunched at a winery, gathered for lattes in one of our villages, and celebrated the local harvest with uber chef Mario Batali. In the process, the passion for protecting



Leelanau County has been heightened.

The group of 12 who purchased a cooking lesson and dinner with Mario Batali spent six hours with the famous chef pre-

paring food, learning his techniques and culinary history, sipping Mawby champagne and ultimately, dining on a multi-course meal. Mario has donated his time three years in a row now, and in the process has raised \$134,000 for the Conservancy! Perhaps even more important, his personal passion for Leelanau and his desire to see it protected has garnered fantastic press far and wide for our cause—from *Traverse Magazine* to the *Detroit Free Press* to the *New York Times*!

The lucky diners (who were outbid the prior two years) say they had a fabulous time. "Mario is just an incredibly nice, down-to-earth guy," said one of the participants. "He made it clear that the reason he does this is because he loves Leelanau



County and the Conservancy and everything we do and everything we stand for." "He used all local ingredients and made it a point to let us know that, pointing it

out on every occasion."

A month later on a beautiful September afternoon, 18 people gathered at Don and Ann Gregory's orchard near Suttons Bay. They picked apples, toured miles of apple trees in a tractor-pulled wagon and stopped for wine and hors d'oeuvres at "the top of the world," said Andrea Muladore. "We stood there and overlooked the rolling hills and both bodies of water at this gorgeous spot.

You could just feel it in your soul. To hear Don Gregory talk about what he does and hear about his own love of farming and of the land, well, it was really unforgettable."



That same week another group of 10 met at Bel Lago for a private tour, tasting and lunch with winemaker Charlie Edson. Jane Maximovich emailed us to say, "We had a wonderful afternoon with someone who truly has great knowledge and a great passion for making wine. Charlie also has a passion for Leelanau County, which all of us share in as home owners in 'God's Country.' Making a difference for future generations is what it is all about and the wine industry is a big part of that in our county."

There are many more events yet to take place, from morel hunting to dinner on the Crystal River. For everyone who donated an item or bid on one this year, thank you! If you have a unique idea that celebrates the best of Leelanau for next year's auction, please email cfaught@theconservancy.com. Or, better yet, come to our first auction committee meeting in November! (See our calendar on page 14 for details.)

Conservancy vice-president, Jeff Corbin, teamed up with Adelaide's to serve lattes and brunch to a dozen women in downtown Suttons Bay. Along with



serving coffee, Jeff wore a t-shirt featuring our new DeYoung Natural Area and talked up the project to those who were unfamiliar with it. Adelaide's owner, Melissa Walton, says the event was a great way for her to contribute to our cause. "I enjoyed it so much!" she says.



Picnic Promotes Local Foods to Support Farmers and Local Economy

Buying local foods is good for farmers, the local economy, the planet, and you! Farmers who are profitable are less tempted to sell land for development. Buyers experience the great taste of food that is grown for flavor rather than shelf life. Less gas is used to get from farm to table, reducing air pollution and our dependence on foreign sources of energy. And money that is spent in Leelanau stays in the community, circulating again and again.

That's why we serve and showcase local foods at our annual picnic. Special thanks to our local foods committee, who assembled centerpieces, picked up produce, and worked with local farmers and chefs. We're grateful to local chefs who lent their time, energy and culinary skills to make our picnic memorable. Among them: Epicure Catering, Kejara's



Leslie Saffell (top) and Franc and Mary Ann Krebs (left) spent a morning picking up produce from local farmers.

Bridge, the Bluebird, TLC Tomatoes and Hansen Foods. Check our website to download some of their wonderful recipes!



John and Gina Erb with Deb Martineau use Garthe cherries in picnic table centerpieces.

Cammie Buehler and Andy Schudlich of Epicure Catering created a potato salad appetizer for our picnic. They used baby new potatoes grown near their kitchen at Cherry Basket Farm in Omena. Thanks also to Epicure for helping at and hosting the Mario dinner each year, and for providing a harvest dinner for 12 (last year too!) that earned \$1,800 in our live auction!



2007 Volunteer and Business Partner Awards

Volunteer of the Year: Chuck Whetsel

Chuck, who lives in Northport year round, has been an incredible stewardship volunteer over the last five years. But this year he's gone above and beyond the call of duty. At the time of the picnic, Chuck had already logged some 336 hours of volunteer time! Much of it has been spent doing computer-based mapping work required to monitor and record our 100-plus conservation easements. He also spends many hours out in the field monitoring easements and building and maintaining trails. His stellar woodworking skills have come in handy as well: he helped build a new bridge at Kehl Lake, benches at Chip Run, kiosks, signs and



more. He's lent his tools, trailer, and equipment; and if that wasn't enough, he also donated a beautiful wood-turned vase for our auction that brought in \$100! Thanks, Chuck, for all you do.

Business Partner of the Year: KAL Excavating

Over the last two years, Joan Kalchik has generously donated labor services to repair our Kehl Lake Natural Area parking lot. She and son, Nate, have also worked closely with our Stewardship Director, Jenee Rowe, on projects at our DeYoung Natural Area, from creating a parking area to removing the invasive autumn olive and a diseased cherry orchard. They did so at a substantial discount. What's more, KAL has been a member since 1993, lending financial support to our day-to-day work. We hope to continue our many-year relationship with KAL, whom we see as a great example of a local Leelanau business giving back to this community through their generous work on our natural areas.



Thanks to All Who Helped and Participated!



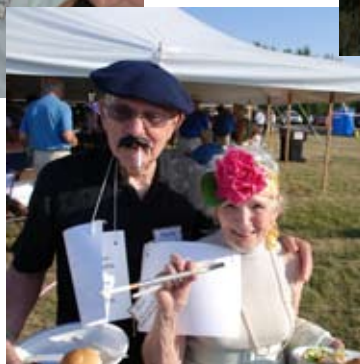
Super setter-uppers, our display chair, Christina Pfeufer and her able assistant, Laura Swire get ready for the big event.



The Kids Tent was as popular as ever. Special thanks to Sue Corbin and Evy Sussman for running the show for attendees ages 10 and under.



Another great auction committee idea... costumes! Ann and Herb Nichols dressed as Parisians to help sell a guided tour of the Champagne region of France with vintner and board member Larry Mawby. Mike and Andrea Muladore promoted trips to Washington DC and the Big Apple. Special thanks to Judy Balas and Annette Deibel for helping us to pull this off.



Under the big tent, Maxine Wyatt and others peruse the over 100 items on offer.



Save the Date! Volunteer Expo 2008 Set for Saturday, Feb. 9

Volunteering for the Conservancy is a great way to meet new friends and feel like you are making a difference in helping to protect our beautiful peninsula. Your help is needed! Come to our Volunteer Expo on Saturday, February 9, at our office on 105 First St. in Leland, and learn more about all the ways you might help. From mailing crews to building new trails to rescuing wildflowers to working on our auction committee, there is a job for every age, interest and ability. Even if you are already a seasoned volunteer for the Conservancy, please come to share your experience and find out about opportunities in the

coming year. We'll have formal presentations at 1:15 pm and 2:30 pm, with information tables and casual conversation in between presentation times for those who come and go.





Great Gifts for Those Who Love Leelanau

Stuff a stocking or give a unique hostess gift with our set of eight note cards. The set contains two each of four different scenes: the Crystal River, DeYoung Natural Area sunflowers and barn, paddlers on Lake Leelanau's Cedar River, and Kehl Lake Natural Area near Northport. Envelopes also included. Cost: \$8 if you purchase them in our Leland office, or we'll ship them out for an additional \$2. For more great gift ideas, visit our website: www.theconservancy.com and click on the Ways to Give bar, then select the "Online Store" option.



Area Businesses Give Back to Protect Beautiful Leelanau

For the last several years, Bob Sutherland of Cherry Republic has asked customers who visit his stores to add one percent to their tab to help protect farmland. Nearly everyone is happy to help and thinks it's a great idea. Then Bob passes those donations on to groups working to protect farmland and our agricultural way of life.



He did just that at an event in October at his new Traverse City locale called "Farmer Appreciation Night." Bob presented Land Protection Specialist, Tom Nelson, with a check for \$7,500 to help protect Casier Orchards in Empire. Here, Bob is pictured with Tom and other recipients: Dr. Nikki Rothwell of the NW Michigan Horticultural Research Station, Glen Chown of Grand Traverse Regional Land Conservancy, Michigan Land Use Institute's Patty Cantrell. Thank you, Bob and Cherry Republic!

Other local businesses also tell us that they know that Leelanau's unique beauty is linked to their livelihood and want to do their part to help protect it. The Leland Cherry Company, M22online.com, Leelanau Propane, Gill's Pier Winery, L. Mawby Vineyards, Bel Lago, Black Star Farms, Nelson Moulding and Frame and the family of Suzanne Wilson have all donated a portion of sales to us! If you are interested in learning more about how your business can help, please contact Carolyn Faught at 231-256-9665 or email cfaught@theconservancy.com.



You can also give a gift to friends or family who live far away, but have Leelanau in their hearts.



Happenings

Leelanau Preservers - A Gift that Lasts Forever!

Need a Great Gift That's Meaningful Too?

When you give a gift through the Leelanau Conservancy Preservers program, you can preserve land in a child's name and instill in them at an early age that they have a stake in what Leelanau is to become. You can also give a gift to friends or family who live far away but have Leelanau in their hearts. Or, preserve land in your own name. As a result of your contribution, your gift recipient becomes a "Leelanau Preserver." Over the years, we'll keep track of the total acres that have been preserved in their name. We'll send a beautiful card acknowledging your gift. Remember, giving to the land fund isn't just limited to the holidays. You can begin or add to a loved one's acreage any time a special occasion arises. Together, we can preserve the best of Leelanau.

Milestone Recognition Tiles—125 Mounted on our Leland Village Green!

Many Conservancy supporters have been buying Preserver gifts since the program's inception in 2002 and we've kept track of each person's accumulated acreage. When someone reaches the 1/10 acre milestone (\$500) a beautiful personalized hand-made tile is mounted on our Preservers Circle in the Leland Village Green. This summer Suttons Bay tile artisan Leif Sporck installed 125 tiles for those who have reached milestones from 1/10 acre up to 3+ acres! A new tile will be mounted each time someone reaches 1/10 acre, 1/4 acre, 1/2 acre, 1 acre and each additional acre (tiles are mounted annually in June and September.)

Something Special to Engage Young Children

When you give a Preserver gift to a child, along with a scenic card and certificate, he or she also receives a "Find Me in Leelanau Exploration Kit." Created by our own Ms. Wizzle (Docent Ann McInnis), and recommended for kids 10 and under, this kit includes: stickers of wildlife and other natural wonders to look for at Conservancy Natural Areas and a booklet where children can match up the stickers to compelling questions that will teach as well as entertain. "Conservancy Kids" can earn a finger puppet critter (animals represented are native to our lands) by visiting natural areas, posting an entry on our DeYoung Squirrel Blog or taking part in our Why Leelanau Journal (see our website for more details.) In the process, you'll be cultivating an appreciation for nature in a child who is special in your life.



I would like to preserve:

- | | |
|---|--|
| <input type="checkbox"/> 270 square feet \$30 | <input type="checkbox"/> 1/10 acre \$500 |
| <input type="checkbox"/> 450 square feet \$50 | <input type="checkbox"/> 1/4 acre \$1250 |
| <input type="checkbox"/> 900 square feet \$100 | <input type="checkbox"/> 1/2 acre \$2500 |
| <input type="checkbox"/> 2250 square feet \$250 | <input type="checkbox"/> 1 acre \$5000 |

in the name of _____

Address: _____

☐ My recipient is a child whose age is _____ *

☐ This gift is a memorial

☐ send packet to me. ☐ send packet to my recipient.

Card to read _____

* Please note: Gift packets for children age 10 and under will include our Conservancy Kids Exploration Kit.

For additional gifts, attach a separate sheet of paper.

From: Name _____

Address: _____

Total amount of order: \$ _____

☐ Check enclosed (payable to Leelanau Conservancy)

☐ Charge to VISA/MASTERCARD

_____ Exp. date _____

Cardholder Name: _____ Signature _____

Phone: _____

email: _____

Send order form and payment to: Leelanau Conservancy, P.O. Box 1007, Leland, MI 49654, or order online: www.theconservancy.com



2007 - 2008 Winter Hikes & Events

Important Note: We are pleased to offer this schedule of hikes and programs, led by our knowledgeable volunteer Docents. Do dress according to weather. So that we may provide the best experience possible and be fully prepared, we require (and appreciate!) advanced registration. Most hikes last around two hours unless otherwise noted. Please call 231-256-9665 to register and for questions. Want to learn more about the Docent who will be leading your hike? Visit our website and read about their backgrounds, interests and teaching styles.


Wednesday, November 7th 10 am Kickoff Meeting for 2008 Auction and Picnic

If you want to meet great people and take part in the "event of the summer," you're invited to join our 2008 Picnic and Auction Committee. Help is needed to pull off this fantastic event—everything from keeping track of items to working on our local foods committee. This is a really fun group of people and we'd love to have you join us. We'll meet at the Conservancy office in Leland for coffee, muffins and brainstorming!

Thursday, November 8th 6:30 pm Caring For the Land Talk

Best-selling author and native plants expert Lorraine Johnson will speak at the MSU NW Horticultural Research Station. Johnson will discuss a new approach to gardening – emphasizing the importance of native plants and our role in restoring native landscapes, in our backyards and beyond. Also featured, a brief overview of our region's native flora, local success stories related to native plant restoration, and time for discussion. No charge. Registration is appreciated; call MSUE-Leelanau at 231-256-9888.

November 9th thru 11th Opening Reception, Friday, 5-7 pm Student Photo Exhibit of DeYoung

See photos taken by students as a part of the DeYoung Natural Area Photo Project at the Old Art Building in Leland. Led by Suttons Bay teacher and photographer Scott Tompkins, the exhibit highlights the natural beauty and cultural history of DeYoung. and See story on page 7. Exhibit sponsored by:  Northwestern Bank

Saturday, December 22nd 1 pm The First Signs of Winter at Chippewa Run

Join docent David Harris for a hike around the Chippewa Natural Area in Empire. The first signs of winter should be upon us and this will be a wonderful way to get out and discover all that this incredible natural area has to offer. If there is snow at this point, snowshoes are recommended.

Saturday, December 29th 1 pm Holiday Snowshoe Hike at the DeYoung Natural Area

Join Conservancy President and docent Tom Dunfee for a fun and eventful snowshoe hike at the DeYoung Natural Area on Cedar Lake. You'll traverse our new, winding quarter-mile Cedar Lake Trail that will take you through a magical old cedar forest and out to the lake. You must provide your own snowshoes for this event.

Sunday, December 30th 2 pm Wildlife Clues at Houdek Dunes

Welcome winter with a hike to discover clues to the myriad wildlife activities occurring daily! Enjoy a hike in this unique 330-acre natural area with docents Ann McInnis and Ann Mason. If there is sufficient snow, bring snow shoes or cross-country skis

Saturday, January 19th 1 pm Snowshoe Hike at DeYoung

Join Conservancy Executive Director Brian Price for a snowshoe hike at the 145 acre DeYoung Natural Area. Be prepared for a vigorous hike through some of the upland areas of this beautiful preserve. You must provide your own snowshoes.

Saturday, January 26 1 pm Snowshoe the Incredible Chippewa Run Natural Area

With winter in all its glory by this point, it's time to get out and explore some of Leelanau's beautiful acreage. Conservancy docent David Harris will lead you around this natural area, past a stream, pine plantation and old orchard. You must provide your own snowshoes.

Saturday February 9th 1-3 pm Volunteer Expo 2008



Volunteering for the Conservancy is a great way to meet new friends and feel like you are making a difference in helping to protect our beautiful peninsula. Your help is needed! Come to the expo at our office where you will meet volunteers who will tell you about their experiences. Learn more about all the ways you might help. (See story on page 12).

Saturday, February 16th 10 am

The Treasure of Winter at DeYoung
Enjoy the peace and beauty of winter with Conservancy Director of Charitable Giving Anne Shoup for a snowshoe hike at the beautiful DeYoung Natural Area where we will celebrate the uniqueness of this incredible land. You must provide your own snowshoes.



Sunday, February 17th 1 pm The Beauty of Chippewa Run in the Winter

The glistening snow, the trickling brook, the old and tattered orchard. All of these are visions to view as you snowshoe the Chippewa Run Natural Area with docents David Harris and Ann Mason. They will show you points of interest throughout this incredible tract of land. You must provide your own snowshoes.

DIRECTIONS TO NATURAL AREAS

HOUDEK DUNES NATURAL AREA

There are two loops here totalling 1.25 miles that traverse gentle, but sandy terrain. Steep steps lead you from the parking area to the trailhead. Beginning in Leland, drive north along M-22 approximately 5 miles to County Road 626. Proceed another ¾ mile north along M-22. A sign on the west (left) side of the road marks the entrance to the parking area.

CHIPPEWA RUN NATURAL AREA

Explore a 1 ¼ mile trail here on easy terrain. From the intersection of M-72 and M-22 in Empire, head north on M-22 about 7/10 of a mile. The parking area is located on the left, or northwest side of the street just south of the creek.

DEYOUNG NATURAL AREA

The 1/4 mile Cedar Lake Trail is located just across the TART trail. See kiosk. It is flat and winding.

FROM TRAVERSE CITY: From intersection of M-72 and M-22 in Traverse City (Tom's West Bay) go north on M-22 1.2 miles, turn left onto Cherry Bend Rd. Go 2.0 miles down Cherry Bend Rd., and look for the barn on your right. Pull into the parking area by the barn.

FROM LEEANAU COUNTY: From CR 641 and Cherry Bend Rd. intersection, go towards Traverse City on Cherry Bend Rd. about 2.1 miles, look for the barn on your left. Pull into the parking area by the barn.

Welcome New Sustainers!

We now have over 450 individuals/families that make an annual pledge of \$500 or more to support the operations of the Conservancy, giving us the consistency we need to insure we meet our long-term goals for protecting this very beautiful place. Sustainers are special people with special events held in their honor. To learn more about joining the Sustainer's Circle, call Gayle at 256-9665 or email her at gayle@theconservancy.com.

theconservancy.com. Thanks to all our loyal Sustainers. Your support is critical to our ongoing success. New since our previous newsletter:

Frank and Rosemary Ball
Dale and Joan Blount
Chuck and Susan Cady
Jill Berkley and Larry Goldman
Jim and MaryJo Grogan
David Johnson & Kim Knowles
Polly Jo Kemler
Dr. Jerry and Betty Sherrick Miller
Tom Skinner

Kristine Ball and Paul Solli



New Sustainer Tom Skinner (right) shares a glass of local wine with longtime Sustainers Marlis Mann and Walter Schmid.

Making a Commitment A group of teenagers who spend part of their summer on Northport Point—28 to be exact—held their seventh annual triathlon. In this event, organized by Lisa Randall, the kids swim a half mile in Northport Bay, bike six miles and run one more. All this energy is expended with one purpose in mind: to raise funds and awareness for our land protection projects at the tip of the peninsula.

Many of these same kids helped in our children's tent at our picnic, and also at work bees throughout the summer. Lisa's son, Chris, presented checks and pledges totaling \$2,500 at our picnic—bringing the total raised so far to some \$15,000 over the last seven years. Way to go, kids! "While many of the participants only spend a few weeks a year here, all have a deep love of this special place," Chris told the crowd of 700. "The triathlon is our way to make a commitment to preserve it for our and future generations."





A Golden Opportunity

It wasn't your ordinary family get-together. To celebrate their 50th Wedding Anniversary in July, Jack and Darlene Carpenter of Empire and Denver gathered together 35 family members from age seven to 70 for a work bee at Chippewa Run Natural Area. The idea originated with Darlene contacting the Conservancy about a volunteer day for her family "to learn more about what the Conservancy does, and to give back to the area we love so much." The group spent a morning clearing, marking and mowing trails, moving old tires and cutting black locust sprouts. Our intern, Sarah Cook, who worked with the group said, "They really helped us to finish a lot of the work we had left at Chip Run, and were generally just a great family!"

A picnic lunch, and of course, cake, was also on tap. Jim Carpenter (Jack's little brother) said, "It was a hot day, but a worthwhile way to honor Jack and Darlene's golden anniversary."

Several family members further honored the occasion with a \$500 gift to our "Adopt-A-Natural Area" program. A plaque honoring Jack and Darlene (see photo) was placed at the Chippewa Run trailhead. Thanks to the Carpenter family for all your help--and for including us in your celebration!

Learn more about our Adopt-A-Natural Area Program at www.conservancy.com or call Jenee, Stewardship Director: 231-256-9665.

(l-r) Tim, Tamra and Tom Carpenter honor their parents' 50th anniversary with a family work bee



Let's Stay in Touch!

We publish three newsletters a year in addition to our Annual Report. In between times, we keep members up to date on breaking conservation news, volunteer opportunities and other events via email. We use email sparingly, and, we think, thoughtfully, giving members information we think they'll want to have. To get on our list, call us at 231-256-9665 or email cfaught@theconservancy.com.



LEAVE A LEGACY

We would be honored to have you as a member of our Heritage Society, which includes Conservancy supporters who have chosen to bequeath the Leelanau Conservancy through wills, charitable remainder or lead trusts, gifts of insurance, retirement plans or other estate planning arrangements. Many of you have already named the Conservancy as a beneficiary in one way or another. If you have done so and not yet informed us, please let us know: we would like to list you as a member of our Heritage Society to recognize your commitment and because your actions may help to inspire others. If you have questions about the Heritage Society or would like to learn more about your options, call Development Director Anne Shoup (256-9665) or email ashoup@theconservancy.com.



Honorariums & Memorials

HONORARIUMS & MEMORIALS

(Received between 7/15/07 and 10/15/07)

In Honor of

Gil and Annette Deibel
Mrs. Charlotte S. Read

Benjamin V. Dansard
Mr. and Mrs. Charles S. Wagner

Rick and Enid Grauer
Mr. and Mrs. Julian Greenebaum

Molly Harrison
Ms. Sally G. Heekin

Mary Lyons
Genuine Leelanau Charitable
Fund

Lisa Presley and Amy Courter
Ms. Sandra L. Murphy

Roy and Carol Trifilio
Mr. and Mrs. Lloyd Lindner



Mary Lyons: She's Genuine Leelanau!

Congratulations to Conservancy Board Secretary Mary Lyons for being recognized as this year's recipient of the "Genuine Leelanau Award." Mary has worked tirelessly for the protection of Leelanau farmland and gave an impassioned talk at a party in July where she was honored. Mary is pictured with Sally Viskochil who is on both the Genuine Leelanau and Conservancy board of directors.

Happy Anniversary!

George and Eloise Basta - 50th
Mr. and Mrs. W. Bruce Rogers

*Jack and Darlene
Carpenter - 50th*
Mr. and Mrs. Jack L. Carpenter
Mr. and Mrs. Terry L. Carpenter
Mr. and Mrs. Walter D. Cibulskis
Ms. Judith A. McCormick
Ms. Jean Van Eck

Paul and Ruth Leugers - 50th
Mr. and Mrs. William A.
Goodfallow
Mr. and Mrs. Thomas A.
Klinefelter

Robert and Annabel Moore-25th
Ms. Ann S. Potter

Tom and Marilyn Steele-60th
Mr. and Mrs. Dan Cruz
Mr. and Mrs. James H. Fowler
Mr. and Mrs. George I. Liljeblad
Mr. and Mrs. David J. Sprout

Their 52th Anniversary
Mr. and Mrs. Thomas A.
Eichstadt

Happy Birthday!

Joanne Burnham - 70th
Mr. and Mrs. James N. Shad

Steve Gardner
Mrs. Molly Harrison

Robert Giles
Mr. and Mrs. Rob H. Giles, II

Mary C. Linton
Ms. Maureen J. Delaney-Lehman

Ann Mason
Mr. and Mrs. David L. Banks

Special Messages

*In Honor of Amy L. Tennis'
Graduation*
Mr. Jeff Musser

In Memory of

*Wayne Franklin "Andy"
Anderson*
Ms. Joanne Noonan

Arthur Baker
Mr. and Mrs. Richard B.
Andrews
Ms. Mary Lou Breeze
Mr. and Mrs. Walter W. Bright
Mr. and Mrs. Bob Burroughs
Mrs. Jeanne B. Burroughs
Dr. and Mrs. Richard F.
Burroughs, MD
Mr. and Mrs. Norman J.
Campbell
Frank Degnan & Christine
Meyer-Degnan
Mr. John B. Hills
Ms. Nancy A. Powell
Mr. and Mrs. William F. Roth
Mr. and Mrs. Robert Seyfarth
Mr. and Mrs. Theodore H.
Seyfarth
Mr. George Sietsema
Ms. Janet Smith
Mr. Herbert M. Taggart
Mr. and Mrs. Dennis Zabaldo

Janine Bellizi
Karen L. Chase & David Bellizi

Barbara Roth Boswell
Ms. Carolyn E. Caldwell
Mr. and Mrs. Raymond K.
Cooper, II
Mr. and Mrs. William Loveless, II
Mrs. Eleanor B. Stephenson
Mr. and Mrs. S. Shepherd Tate

Erma Ruth Brown
Mr. and Mrs. S. Harley Wheeler

Scott Anderson Casey
Gail and Keith Evans
Ms. Virginia C. Steck

Charles Chandler
Mr. and Mrs. Delbert C. Dyche

Max Crandall
Mr. and Mrs. Carl C. Slater, Jr.

In Memory of

Barbara K. Feld
Jonathan Feld & Shelley Longmuir

Sue Fitch
Mr. and Mrs. Roger H. Fitch

James C. Ganter
Mr. and Mrs. Frank E. Ball
Mr. and Mrs. W. J. Ballard
Mr. and Mrs. Alexander E.
Bracken
Gail and Keith Evans
James and Muggs Gooden
Mr. and Mrs. Russell R. Kirt
Michael McManus & Sue
Brighthead
Mr. and Mrs. Carl C. Slater, Jr.
Mrs. Margaret M. Tarsa

Betty Graf
Mr. and Mrs. Philip O. Geier, Jr.
Mr. and Mrs. Shepherd Tate

Nancy Hintermeister
Mrs. Marie E. Bahlke
Mr. Valentine Corradi
Mrs. Diane P. DeHuff
Mr. and Mrs. Edward Foley
Dr. and Mrs. Sam Lape, MD
Ms. Adeline L. Maack
Ms. Elizabeth K. Moore
Mr. and Mrs. Alfred Prizlow
Ms. Charlotte A. Rising
Mr. and Mrs. Darrell F. Spencer

Dr. Julianne Hoff
Mr. William R. Hoff

Stuart Hollander
Mr. and Mrs. George W. Ander-
son
Ms. Mimi Mullin
Mrs. Evaline H. Rhodehamel

Thomas J. Hollmeyer
Mr. T. Jeff Davis

Sally Rowland Holman
Mrs. Julia T. Dickinson
Ms. Grace D. Johnson



MEMORIALS

(Continued from page 18; Received between 7/15/2007 and 10/15/07)

Alan Huligmann

Mr. and Mrs. Richard Miller

William Irwin

Mr. and Mrs. Jack A. Krause

Ms. Sandra L. Ringlever

Jeff Lamont

Mr. and Mrs. Paul E. Adami

Mr. and Mrs. Michael A. Aiello

Mr. and Mrs. Rodney P. Allen

Mr. and Mrs. James W. Alseth

Mr. and Mrs. Ian G. Anderson

Mr. and Mrs. Todd J. Anderson

Mr. and Mrs. Jose A. Aponte

Mr. and Mrs. Robert B. Barber

Mr. and Mrs. Dale M. Becker

Mr. and Mrs. Richard Benanti

Mr. and Mrs. Charles

Bloomberg

Mr. and Mrs. Stephen J.

Bochenek

Mr. and Mrs. Philip J. Boria

Eric L. Brenner & L. Gail Melson

Brown, Hay & Stephens, LLP

Mr. and Mrs. Willard Bunn, III

Mr. and Mrs. William E.

Burgess, III

Barbara and Lisa Burris

Ms. Jane L. Bussing

Mr. and Mrs. Daniel W. Cadigan

Camping & Education Foundation

Mr. and Mrs. Frank F. Capitanini

Mr. and Mrs. Thomas H.

Cartwright

Mr. and Mrs. William Cavanagh

Mr. and Mrs. Dennis Chookaszian

Cook-Witter, Inc.

Mr. and Mrs. John P. Coombe

Mr. and Mrs. Paul R. Craig

Ms. Diane L. Crawford

Ms. Judy K. Dalhaus

Drew Davis

The John Davis Family

Mr. and Mrs. Phillip Davis

Ms. Donna Del Principe

Robert Dixon & Mary Donahue

Mr. and Mrs. John A. Donahue

Mr. and Mrs. Leo J. Dondanville

Dorris Law Firm, PC

Jeff Lamont, con't

Mr. and Mrs. Douglas Dougherty

Mr. and Mrs. Daniel A. Dungan

Mr. David J. Dyer

Ms. Donna Dziedzic

Mr. and Mrs. William R. Enlow

William Enyart, Jr. & Annette

Eckert

Mr. and Mrs. Dale R. Emmerich

Mr. and Mrs. Emmet A. Fairfield

Mr. and Mrs. Terry J. Fera

Mrs. Carole A. Fisher

Mr. and Mrs. Joe Fitzsimmons

Mr. and Mrs. Edward R. Gaffigan

Mr. and Mrs. Peter J. Garvey

John Giachetto

Mr. and Mrs. Dan Garrison

Mr. and Mrs. Randy S.

Germeraad

Mrs. Martha B. Gould

Mr. Samuel K. Gove

Mr. and Mrs. Ralph C. Hahn

Hanson Professional Services

Mr. John J. Hartnett

Charles Heintz & Erin Melley

Barbara Hermansen & Robert

Wilcox, Jr.

Ms. Gretchen Hoffmann

Mr. and Mrs. Michael Hoffmann

Mr. William G. Holland

Mr. and Mrs. Robert L. Hulseman

Mr. and Mrs. Howard C.

Humphrey

Illinois Educational Labor

Relations Board and Staff

Mr. and Mrs. John E. Ison

Ms. Sharon K. James

Mr. Ronald Johnson

Mr. and Mrs. Lance T. Jones

Mr. and Mrs. James J. Karcz

Mr. Frank A. Katalinich

Mr. and Mrs. H. Neil Kelley

Rich Kerhlikar & Judith

Barringer

Mr. and Mrs. Steve Kern

Mr. and Mrs. Bernard P. Killian

Phil Later

G. Timothy Later & Mary Field

Mr. and Mrs. George P. Later

Jeffrey Later & Betsy Donahue

Mr. and Mrs. Stephen K. Later

Ms. Kate Lawler

Leelanau Conservancy Staff

Mr. and Mrs. James M.

Lestikow

Mr. and Mrs. Preston H. Levi

Mr. and Mrs. Anthony

Liberatore

Mr. and Mrs. Thomas E.

Livingston

Mr. and Mrs. J. William Lucco

Steven Luebkehan & Sara Later

Mr. and Mrs. Robert A. Lynn

Ms. Nancy A. Lyon

Dr. and Mrs. James B.

Madison, M.D.

Mr. and Mrs. Richard W.

Mansfield

Mr. and Mrs. Al A. Manson, Jr.

Mr. and Mrs. Bill Martin

Mr. and Mrs. James H.

McDermott

Mr. and Mrs. Harry McKinney;

Mr. and Mrs. Joseph E.

McMenamin

Mr. Michael B. Metnick

Judge and Mrs. Richard Mills

Mr. and Mrs. Mark D. Monson

Mr. and Mrs. Michael L. Murphy

Mr. and Mrs. Peter M. Murphy

Mike Myers

Mr. and Mrs. J. David Neff

Mr. and Mrs. M. G. Nelson

Mr. Henry S. Nisbet

North Suburban Library System

Mr. and Mrs. Joseph Norvell

Mr. and Mrs. Samuel Nudo, Jr.

Mr. and Mrs. Joseph J.

O'Shaughnessy

Ms. Brenda Pacey

Mr. and Mrs. Thomas J. Pasko

Mr. and Mrs. Ralph Passarelli

Mr. Stephen L. Patton

Mrs. Mitzi Perdue

Mr. and Mrs. Phillip A. Pitchford

Mr. Henry J. Plawer

Mr. and Mrs. Joseph S.

Prechodnik

Mr. and Mrs. Richard J. Rakers

Pat Reilly

Brian, Craig & Barbara Reynolds

Mr. and Mrs. Martin J. Richmond

Mr. Bernie Robinson

Mr. and Mrs. David A. Rogers

Mr. and Mrs. George H. Ryan, Sr.

Robert Roth & Sharon Star

Mr. and Mrs. Jonathon E.

Rothschild

Mr. and Mrs. Pete Sander

Mr. Paul Schanbacher

Mr. and Mrs. Frederick J. Schaupp

Charles Schmalz & Lucie

Blanchard

Mr. Melvin Schneider

Mr. and Mrs. Stephen F. Selcke

Mr. and Mrs. Scott Shearer

Mr. and Mrs. Patrick J. Sheehan

Mr. and Mrs. Peter C. Skarzynski

Ms. Peggy L. Snyder

Mr. and Mrs. Ronald Spears

Mr. and Mrs. Melvin G. Steffan

Mr. Frederick Stericker

Mr. and Mrs. James J. Stukel

Dr. William J. Sturm, Jr.

Selvaggio Steel

Mr. and Mrs. Stephen A. Tagge

Mr. and Mrs. W. Curtis Taylor

Mr. and Mrs. James M. Varnum

Mr. and Mrs. Frederick P. Velde

Mr. and Mrs. Leonard E. Watson

Mr. and Mrs. Douglas L. Whitley

Mr. and Mrs. Jeffrey M. Wilday

Mr. and Mrs. Daniel J. Willenberg

Ms. Lois S. Wilson

Mr. and Mrs. Don Wood

Mr. and Mrs. Charles G.

Woodward

Mr. and Mrs. Christopher S.

Wright

Mr. and Mrs. Joseph

Zidovsky, Jr.

Mr. Raymond M. Zinnen

Judge Paul Martin

Mr. and Mrs. Frederick W. Bloom

Enid and Rick Grauer

Dr. and Mrs. R.A. Westphal

Doug Nelson

Mary Ellen Ewing & Jamie Ewing



Charles Randall

Mr. and Mrs. Delbert C. Dyche

Alan Read

Mr. and Mrs. David W. Hildner

Roy Reynolds

Ms. Ann C. Lin

Mr. and Mrs. William J. Morse

Julie Rothaug

Mr. and Mrs. Ben Maule

Mr. and Mrs. Kent

Shoemaker

Martha Rowland

Mrs. Julia T. Dickinson

Ms. Grace D. Johnson

James G. Rust

Mr. and Mrs. Richard Rust

Millier and Herbie Taglauer

Mr. and Mrs. Leroy Taglauer

Carol Thomas

Mr. and Mrs. Themistocles L.

Majoros

Louise Thomas

Ms. Mimi Mullin

Mrs. Torre Tyler

Mr. and Mrs. Victor S.

Johnson, Jr.

Mr. and Mrs. Jerry K. Muir

Richard S. Tyler, MD

Dr. and Mrs. Richard F. Tyler

David Vaughan

Stephen and Patricia Jones

Blessman

Mr. and Mrs. Michael T. Coler

Lawrence Noble, Jr.

E. Perry & Laurel (Wolfe) Webb

Donald and MaryEllen Marik

Larry and Marcia Webb

Barbara K. Windham

Ms. Judy Blackmar

Mr. and Mrs. Paul E. Ewing

Ms. Carol Ferrero

Garfield Courts Properties

Kuhlman Tree Service

When we recognized memorial gifts given between 3/5/07 and 7/15/07 in our last newsletter, we inadvertently omitted a number of names. We apologize for the error and have reprinted full memorial lists below.

Gifts in memory of Charles H. Chandler

Mr. and Mrs. William Ammerman

Phyllis Bronson

Mrs. Joan Chandler

Joe and Sybil Chandler

Friends of Joe Chandler FEMA R-VII

Rick & Judy Chandler

Steve & Elaine Chandler

Mr. David Higley

Mrs. Margaret Higley

Andy Hoerner

Bob and Mary Hoerner

Mrs. Judith C. Hoerner and Mr.

Robert Rutter

Tim Hoerner

Mr. and Mrs. Karl Marsh

Paul & Blayne Hoerner Murray

Mrs. Jenny Peterson

Chris and Shelli Smith

Gifts in memory of Charles C. Randall

Mrs. Margaret Higley

Andy Hoerner

Bob and Mary Hoerner

Tim Hoerner

Paul & Blayne Hoerner Murray

Eliot Murray

Chris & Shelli Smith

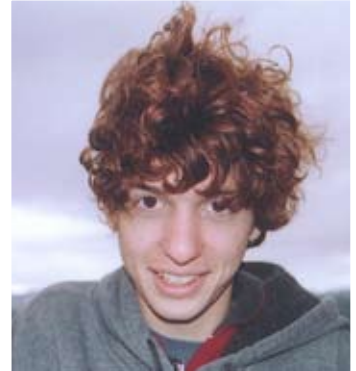
Heather Smith

Jennifer Smith

A Way to Remember

We've had an outpouring of gifts in memory of Jeff Lamont, a 21-year-old who died of cancer after a six-year battle. Read more about this young man, who loved all things Leelanau, in our year-end appeal letter, which should be hitting your mailboxes within days of this newsletter. Jeff's family directed his memorial gifts

to the Conservancy with the goal of buying and protecting a 40-acre woodland near the family cottage. They hope to create a new Conservancy Preserve in Jeff's name. His mom, Bridgett Lamont, says the idea of saving the land that Jeff loved "is what is keeping me going."



Staff News

We're happy to report exciting news about our staff. Farmland Project Manager Dan Scripps was married recently on a beautiful Northern Michigan day. Also, in August, Stewardship Director Jenee Rowe gave birth to her second child, Kai Rowe Segerlind, who weighed in at 10 lbs, 4 oz!



Above: Niles welcomes baby brother, Kai

left: Dan and Jamie Scripps on their wedding day!



OFFICERS and DIRECTORS

Edward and Barbara Collins, *Founders*

Richard O. Ristine, *Honorary Chairman*

OFFICERS

Craig Miller, *Chairman*

Thomas Dunfee, *President*

Jeff Corbin, *Vice-President*

John Erb, *Vice-President*

David Cassard, *Treasurer*

Mary E. Lyons, *Secretary*

DIRECTORS

Richard Brant

John Bull

Jack Burton

Kyle Carr

Susan Green

Molly Harrison

Barbara Nelson-

Jameson

Larry Mawby

Jim Nugent

Kathy Ricord

Jack Seaman

Mary Taylor

Sally Viskochil

Harvey Warburton

Warren Watkins

STAFF

Brian Price, *Executive Director*

bprice@theconservancy.com

Susan Price, *Finance Director*

sprice@theconservancy.com

Matt Heiman, *Land Protection Specialist*

mheiman@theconservancy.com

Tom Nelson, *Land Protection Specialist*

tnelson@theconservancy.com

Jenee Rowe, *Stewardship Director*

jrowe@theconservancy.com

Carolyn Faught, *Communications Director*

cfaught@theconservancy.com

Anne Shoup, *Development Director*

ashoup@theconservancy.com

Dan Scripps, *Program Development Research Associate*

dscripps@theconservancy.com

Gayle E. Egeler, *Membership and Outreach Coordinator*

gayle@theconservancy.com

Arlene Heckl, *Office Administrator*

aheckl@theconservancy.com

Nancy Thomas, *Accounting and Administrative Assistant*

nthomas@theconservancy.com

Why Leelanau?

Why do you love it?

Why have you chosen to live here and bring your children up here? Why do you spend time here whenever you can? What makes it so special to you? Help us celebrate our approaching 20th anniversary by logging your thoughts and sending in a photo or drawing (a great option for kids!) that goes along with what you tell us. We'll post all submissions on our Leelanau Journal web page that will be launched in January. (see pg 8)

It can be just a few lines with a photo, or something longer. It's up to you! Email cfaught@theconservancy.com or PO Box 1007, Leland, MI, 49654. Be a part of the celebration!



Leelanau Conservancy

105 North First Street

P. O. Box 1007

Leland, MI 49654

231-256-9665

conservancy@leelanau.com

www.theconservancy.com

Non-Profit
Organization
U.S. Postage
PAID
Leland, MI
Permit No. 5

