



# Leelanau Conservancy

*Conserving the Land, Water and Scenic Character of Leelanau County*

Newsletter

Spring, 2006

Vol.17, No.1

## LEELANAU CONSERVANCY SIGNS OPTION ON 145 ACRE HISTORIC FARM

**CLOSE TO TC, ADJACENT TO TART TRAIL NEARLY A MILE OF CEDAR LAKE FRONTAGE**

The Leelanau Conservancy has agreed to purchase a historic farmstead with nearly a mile of frontage on Cedar Lake. The 145-acre Louis DeYoung farm is just minutes from Traverse City, with frontage on both sides of Cherry Bend Road. The TART trail runs through a portion of the land on the lake side. Plans for the ultimate use of the property are still in the works, but DeYoung family members and the Leelanau Conservancy envision it free of development and a place where the public can come to recreate, enjoy nature and possibly learn about community supported agriculture.

Late last year the Conservancy put down \$50,000 to get the ball rolling on the purchase. The total project cost is expected to exceed \$2 million. The Conservancy hopes to raise \$1 million in private and family foundation donations and the rest through grants. As of this writing, \$152,000 in cash and pledges has been raised. "We have a long way to



go," says director Brian Price. "We're planning to close on the property on June 1. For that to happen we need to see that the Traverse City community is behind this project."

The 145 acres sits in the middle of a rapidly developing area. "The DeYoung family turned away many offers from developers and sacrificed financially by offering this property to the Conservancy because they care tremendously about seeing it remain as it is today," said Matt Heiman, land protection specialist. "Under some scenarios, the property could have supported as many as 100 homes." From the property's highest vantage points there are views of west and east Grand Traverse Bay.

The project is one of the largest the Conservancy has taken on. "This is one of the biggest inland lake projects for us," said Heiman. "With nearly a mile of shoreline on Cedar Lake, we'll be protecting nearly half of the west side of the lake." An additional 2,400 feet of shoreline was protected through private conservation easements on the east side of Cedar Lake 15 years ago.

(continued on page 6 )



## President's Message

### Land Protection and a Strong Leelanau Economy

In May of this year, Leelanau County's Economic Development Corporation will sponsor a broad-based forum on the county's economic strengths and weaknesses. The objective of this process is to establish a workable strategy to build the foundation for reinvigorating the county's overall economic structure.



I believe that the architecture of this effort, and its eventual positive outcome, will be constructed around the linked elements of agriculture, scenic beauty and focused tourism. Our farms, vineyards, villages, water resources, and unique beautiful landscapes are the key components of our future economic success and stability in Leelanau County.

At the core of this effort is the Conservancy's mission to protect the land, water and scenic character of our county. We are partners with the county in this process. If we want a strong economy we cannot afford not to protect land. Living, working, and visiting in this beautiful place challenges all of us to find the balance between preservation and development that promotes the qualities of the life we cherish, while providing opportunities for families and communities to prosper.

If we, in the greater community, are true to this mission, our managed growth will preserve our natural assets while enhancing our communities and our lives.

Craig A. Miller, President



Anne Shoup, Development Director, with daughter Sonya

## STAFF NEWS

We have one departure, two additions, and one new arrival to report! Natasha Lapinski, our Development Coordinator, moved to Marquette in December to be with her fiancée. We miss her, but are happy for her and wish her joy and success in her new life.

### Welcome Development Director Anne Shoup

Anne Shoup has joined our staff as the new Director of Development. In this role, she will help steward the Conservancy's many friendships and work to expand the organization's ability to conserve the land, water and scenic character of Leelanau County.

Anne grew up in Alaska, flying around the Last Frontier with her bush pilot father and commercial fishing in the waters around Kodiak Island. The many years spent surrounded by pristine wilderness – mountains, ocean, bears and all! – cultivated her deep love of the outdoors and strong belief in conservation.

After studying English at Princeton University, Anne worked in operations management outside of New York and Cleveland for several years. Six years ago, she and her husband, Dan, returned to his hometown of Traverse City for a vacation.... The quite unexpected discovery of a ten-acre parcel in Empire Township prompted a thrilling move northward, many years ahead of schedule!

For the last five years, Anne has worked at Interlochen Center for the Arts, managing the volunteer corps, building relationships with alumni and friends, and raising scholarship and operational funds. Memories of her childhood in Alaska, coupled with a passion for Leelanau County, prompted her application to the Conservancy.

"I am thrilled to become a member of this talented staff and committed Conservancy community," Anne says. "Dan and I are so fortunate to raise our children in Leelanau's breathtaking landscape: the opportunity to spend time hiking, cross-country skiing and swimming as a family is invaluable. We feel especially lucky that Leelanau combines rural living with such vibrant local communities. I look forward to meeting more of my neighbors in this remarkable county!"

### Welcome Jill Porter, Accounting and Administrative Assistant

Jill Porter has joined our staff as the Conservancy's new part-time Accounting and Administrative Assistant. She will be in the office Mondays, Tuesdays, and Thursdays.

Jill grew up in East Lansing and has been vacationing in

*continued on page 14*



## TEICHNER PRESERVE DOUBLES WITH HELP OF FAMOUS NEWSWOMAN

CBS Sunday Morning News' Martha Teichner has been all over the world. But there is no more important place to her than the cedar-and-tamarack-tangled shores of Lime Lake where she spent the first 10 years of her life.

Nearly a decade ago, the Emmy-winning newswoman donated 20 acres near the lake to the Leelanau Conservancy, known today as our Teichner Preserve. Today she is helping to double the amount of land protected—even taking out a \$200,000 home equity loan to help make it happen—to preserve a place that she says is the “essence of who I am today” (see essay on page 4).

Teichner's lead donation will help to purchase 13 acres, including 200 feet of shoreline and wetlands once slated for residential development. Another 10 acres connecting the two parcels will be donated by Jean Raymond of Grand Rapids.

Martha worked with Land Protection Specialist Tom Nelson. The landowner, who had significant funds invested in developing the property, acknowledged the natural beauty of the land and was willing to work with Tom to reach a satisfactory agreement. Tom also worked with neighboring landowner, Jean Raymond, who generously offered to donate 10 acres between between our Preserve and the property to be purchased.

We're fortunate to have people like Martha Teichner and



*The addition to the Teichner Preserve contains 200 feet of Lime Lake shoreline*

Jean Raymond in our midst. Because they have a passion for the land, and are willing to go to admirable lengths to help protect a place they love, future generations will be able to share the magic.

Donations are still needed to complete this project. Help to match Martha and Jean's generosity by donating to the Teichner Preserve Fund today!

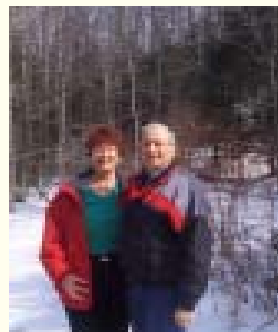
## ANOTHER GIFT FOR LIME LAKE!

It seems that one gift begets another. And, when it comes to conserving the beauty and ecology of a place like Lime Lake, that's a wonderful thing.

First, there was the generous gift from CBS newswoman Martha Teichner (see article above and essay on pg. 4)

When neighbor Jean Raymond heard about Martha's effort, she made yet another magnanimous offer to donate an adjacent tract of wetlands. Together, these gifts have nearly doubled the size of the Teichner Preserve.

Then, when Lime Lake residents Dennis and Erika Ferguson heard about what Martha and Jean were doing, it got them thinking too. The result is the Fergusons' gift of a conservation easement protecting over seven more acres of wetlands and a stream that flows into the Lake.



*Dennis and Erika Ferguson, Conservation Easement donors*

Several years back, a neighbor of the Fergusons owned this property and allowed some timber removal which degraded the tributary's streambed. Significant erosion occurred and sedimentation washed into the lake. The Fergusons wanted to ensure it wouldn't happen again. They purchased the property with the intent to protect the stream and wetlands. When they heard of the good works by Martha and Jean, they contacted Land Protection Specialist Tom Nelson. Tom explained to them that they could permanently protect the stream, wetlands and wildlife habitat with a conservation easement.

The Fergusons' donation of a conservation easement is yet another tremendous gift helping to ensure that the high water quality in Lime Lake stays that way. Oh, and one more thing—the Fergusons made a generous cash donation to the Stewardship Fund, to help with future monitoring costs. It will be matched 100% by Erika's employer, Pfizer Inc.! Like we said, one gift begets another.... Thank you, Dennis, Erika and all those who love Lime Lake and have contributed to the preservation of this special area!



## A LETTER FROM MARTHA TEICHNER, NOVEMBER 2005



If, if, if... If it hadn't been for a bunch of bizarre what ifs, a collection of seemingly unconnected events, none of this would have happened.

What if I hadn't been introduced, by someone who lives at Kiawah Island, South Carolina to friends of his, also South Carolinians, who happen to own an old summer camp on Lake Arbutus... and what if we all hadn't been there in August for a birthday party? What if we hadn't killed time in Cedar waiting for Pleva's to open and then the market next door and finally meandered over to Lime Lake after that? We had planned to make the trip on Monday but changed our minds. If we'd gone on Monday, Janna and Eric Blakely, who now own my childhood home, would have been at work.

As my friends and I pulled into the driveway, Janna Blakely was sitting outside in a lawn chair, talking on the telephone. I could see her mouth the words, "I'll call you back," as we got out of the car. She stood up and called out, "Are you Martha Teichner?"

"Yes," I called back. She flung open her arms and beamed. "I've been waiting all these years for you to come." My friends later told me it was like watching a scene from an opera.

The last time I'd been in the house and walked through the woods and anchored my feet in the water, under the slippery pile-up of worn boards that line the bottom of that part of Lime Lake, was in 1958. The boards have been there for well over a century, ever since the saw mill that was there closed, and the people who ran it shoved tons of lumber into the lake. Every spring, my father hired somebody to come in and dredge. Our little sliver of a beach would be transformed into a board fortress ten feet high, crawling with snapping turtles until they scrambled back into the water.

A road has replaced the path my family cut through the cedars from the house to the lake. I remember it being narrow and dark and always moist, spooky to a child, romantic to my parents as they went to swim on moonlit summer nights. Now it's wide and light and dry. There are culverts under gravel and a metal gate that seem, at least to me, an intrusion on the fragrant swampiness I remember about the place. But the trees still whisper, and wildflowers still grow alongside the streams that have now taken another route.

The first thing I noticed in the house was the floors, bird's eye maple in the dining room, oak in the living room,

wide pine planks in the den and the hallway, the kind of floors a lumberman would have in his home. It was built by a man named Fisher, one of the first lumbermen in the area. When my family lived there, we called it Deer Trail Cottage.

The Blakelys wanted to know about how we lived in their house, a house they've lived in far longer than the Teichners did. They marveled that we arranged the living room the same way they did. We put our Christmas tree in the exact spot they put theirs. They wanted to know which bedroom was mine; were all the old license plates lined up in the garage when we lived there? We figured out that the ancient Servel refrigerator they found in the basement had been ours, and at some point during the three and a half hours we told each other stories. I



guess I said that it had always been my dream to buy back the land, and they said that a significant piece of it was for sale, at least it had been the year before.

From that moment on, I could think of nothing else. I've only been to Leelanau County twice since I buried my mother in 1992, next to my father under a big pine tree in the Leland cemetery. During the first of those visits, in 1996, on a sentimental drive around Lime Lake, as I passed the twenty acres I had inherited, down the road from Deer Trail Cottage, I saw bulldozers through MY trees, clearing the land that is now the golf course at Sugar Loaf. I have nothing against golf courses, but those growling, tooting, beeping machines seemed to be harbingers of things to come, and I was scared.

Somebody told me about the Leelanau Conservancy. As soon as I got back to New York City, I called and offered to donate my property.

After this last visit, I called because the asking price for

*continued on page 10*



### GLEN LAKE: A PLAN TO PROTECT A PRICELESS RESOURCE

Glen Lake, framed by a dramatic rise of Sleeping Bear to the west, and surrounded by high-forested moraines to the east and south, presents one of the most recognizable landscapes in Michigan. The waters of Glen Lake are so pure that with increasing depth, on a clear day the colors shift from sandy hues of the shallows through aquamarine to some of the deepest blue known anywhere.



To the thousands of visitors who view the lake from Pierce-Stocking Drive, Inspiration Point, or the Narrows Bridge, the lake and its surrounding watershed are

simply breathtaking. To the 600 families fortunate enough to share this gem as property owners, Glen Lake is home.

While Glen Lake is widely known for its scenic beauty, its value as a biological resource is just as important. Recent studies have documented that the lake's pristine water quality has changed little over the past century. Big Glen is among a handful of Midwestern lakes with extremely low nutrient and algae levels. The lake maintains high water quality because it is surrounded by nutrient-poor sandy soils, and the surrounding forests and wetlands are largely intact, filtering out potential pollutants before they reach the lake or its tributaries.

Over the years the Conservancy has worked with private landowners in the Glen Lake and Crystal River areas, and with the Glen Lake Association (GLA) to monitor water quality. In 2004 Conservancy staffers Matt Heiman and Meg Woller worked closely with volunteers from the GLA to produce a Watershed Management Plan for Glen Lake and the Crystal River. The plan identifies the two wetland areas most critical to maintaining high water quality in the lake, as well as noting the importance of retaining the surrounding forests which prevent erosion on steep slopes.

The Hatlem Creek wetlands and Crystal River dune and swale ecosystem are unique and sensitive areas. These ecosystems support many rare and endangered species that rely on high water quality. In turn, these ecological gems help to maintain the high quality, low nutrient and stable flows of the waters that traverse through them.

Now, with a thorough understanding of both the science and the scenery that makes Glen Lake so attractive, the Leelanau Conservancy is launching a program to protect more of the

most critical land in the watershed. And we have set the table by securing both private and public funds to begin the work. Last October, when the sale of the Crystal River property to the National Park Service was finalized, nearly \$500,000 in donated funds was released back to the Conservancy for use in the Glen Lake watershed. Also, we are thrilled to announce that \$375,000 from the Clean Michigan Initiative – Clean Water Fund has been approved for the protection of critical wetlands in the Glen Lake-Crystal River watershed.

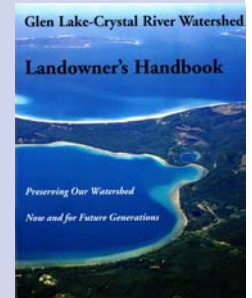
These funds have been earmarked for the purchase of conservation easements in high priority areas such as Hatlem Creek and the eastern ridgeline. Because landowner interest has been high, and because \$375,000 in new local match money must be raised to match the public funds, we will be working to finalize both land protection priorities and fundraising goals this summer. For the families who share Glen Lake, and for the annual influx of visitors who enjoy the Sleeping Bear Dunes, this is a great opportunity to protect a priceless resource.

#### NEW GLA HANDBOOK

Last summer dedicated members of the Glen Lake Association (GLA) hand delivered or mailed over 1,700 copies of this handbook along with a companion Stewardship Checklist to all landowners within the Glen Lake/Crystal River watershed.

Their goal? To share information with fellow landowners on the dynamics of and threats to the watershed. The two-guide package details critical areas in the watershed and explains methods of protection such as conservation easements. Finally, the checklist gives extensive information on how landowners can be good stewards. Sarah Litch, a driving force behind the project along with husband, Mike, also developed the companion stewardship checklist. The Leelanau Conservancy helped in establishing the database for the watershed and contributed information on the land protection tools.

"It is hoped that the simple choices people can learn about in these publications will make a difference in the quality, both now and for future generations in the Glen Lake-Crystal River Watershed," says Sarah. If you would like a copy of the guide, contact Litch at 231-334-3612 or email [ewl9@aol.com](mailto:ewl9@aol.com)





## DEYOUNG PROJECT ON CEDAR LAKE

(cover story continued)

Much of the shoreline on the new project contains wetlands



*Picture yourself here: The DeYoung Natural Area will be a great destination for you and your family to get out and enjoy nature. It's just a 3-mile bike ride from downtown Traverse City or 13 miles from Suttons Bay on the TART trail.*

critical to the health of Cedar Lake.

The 145 acres became available when Louis DeYoung, Sr. passed away last year at the age of 104. His son, Ted, said it was his father's dream to see the land preserved. The family began exploring options with the Conservancy late in 2003. "My sister and I have talked for many years about preserving our land—it's been a subject of many family discussions," said Ted.

"This is a tremendous project that will touch the lives of people from both Leelanau and Grand Traverse," said Heiman. "Thousands of people walk and bike through this area now. We are just beginning to formulate plans and to work with other interested groups. Right now our priority is raising the money in order to secure the property, while reaching out to potential partners as we develop a vision for what this project will bring to the surrounding communities."

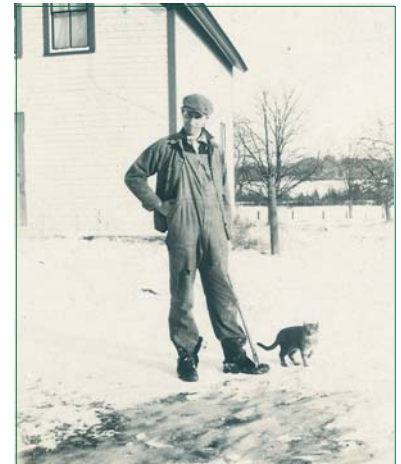
The farm has a rich agricultural history. The aging, mustard colored farmhouse along Cherry Bend Road is where Louis and his wife, Esther, raised two children and, early on, tended a dairy cattle herd. After morning milking, Louis herded the cows to pasture, sometimes leading them over railroad tracks to graze on the shores of Cedar Lake. Louis drove his milk into Maxbauer's Creamery on Traverse City's West Front Street in a one-seat Ford pickup. The DeYongs weathered the Depression, nearly losing their farm. Louis was the first in the area to bring electricity into their home. He rigged up a car generator and a couple of 6-volt light bulbs and hooked it all up to a water wheel on a stream that ran beneath his work-

shop.

After the Depression, the DeYongs were also the first of their neighbors to give up farming with horses for tractors. Soon after they gambled on cherries, planting 8 acres, and enjoyed an extended period of profitability—one that put both his children through college. Today, Ted is a retired aerospace engineer now living in California and daughter, Pat, is a retired physician living in Oregon. At the

time of Louis' death, they co-owned the farm with their father.

For decades the DeYoung farmstead has been one of the most recognizable landscapes along the approach to Traverse City. Most people who drive by have never had a chance to experience the rest of the property—the wild shoreline, the clear streams, the scenic hill tops. It is our goal to maintain the look and history of this beautiful farm, while allowing people to get out and experience the DeYoung Natural Area on Cedar Lake.



*Louis DeYoung, around 1930, in front of his farmhouse, with Cedar Lake in the background. His children say it was Louis' dream to see his land forever preserved.*

### HOW YOU CAN HELP MAKE THE DEYOUNG NATURAL AREA A REALITY!

- H Make a gift or pledge today!  
Send your tax-deductible donation to:  
Leelanau Conservancy DeYoung Project,  
P.O. Box 1007, Leland, MI 49654; or, go to  
[www.theconservancy.com](http://www.theconservancy.com) to make an online donation
- H Host a gathering and invite Conservancy staff to explain the project to your friends and neighbors.
- H Come hike the property during one of our scheduled tours—and bring your friends!
- H Volunteer to build trails, or to help with one of our many stewardship projects.
- H Sign letters or ask us for brochures to give to friends and business associates who may be interested in donating to the DeYoung Project.
- H Talk about this project—help us spread the word!



Since signing the option late in 2005, we've been talking about our plans for this special property. We have just begun to explore how we might collaborate with others to maximize this tremendous opportunity. Dreams and visions are limited only by our ability to harness the resources, partnerships and volunteers necessary to make them come true.

### Some of Our Ideas

- Preserve the near mile of natural shoreline so that it remains forever as it looks today.
- Create a trail system on the 145 acres that offers great cross-country skiing, snowshoeing, hiking, bird watching and nature education opportunities for children and adults.
- Share the spectacular views and rich landscape through docent-led hikes.
- Continue the land's agricultural heritage through a farm land demonstration project.
- Restore some fallow fields to a rich, ecologically diverse prairie & improved habitat.
- Revive the old farmhouse, barns and other structures that are county icons.

### Our Approach

1. Identify and inventory the natural features of the property.
2. Work with interested partners to create a plan for recreation and education opportunities that are compatible with the identified natural features.
3. Develop a plan to preserve the historic buildings and agricultural heritage of the land with volunteers and groups interested in historic preservation and farming.

## COME SEE FOR YOURSELF!

Until the actual purchase of the DeYoung Property occurs (if all goes as planned, it will take place at the beginning of June), visitors may not hike the property on their own. Luckily, the DeYoung Family has given us permission to lead guided hikes, and we are excited to show you the property. Below is a schedule of naturalist-led hikes. We hope to see you there!

### Naturalist-led Hike Schedule at DeYoung

Saturday, March 25	10 am
Saturday, April 8	10 am
Friday, April 21	3 pm
Friday, May 5	3 pm
Saturday, May 20	10 am
Saturday, June 10	1 pm
Saturday, June 24	1 pm
Wednesday, July 12	9 am
Wednesday, July 26	9 am

Learn about the history and natural features of this special place, plus what we have in mind for the future. The weather and sure-footedness of the group will determine which parts of this 145 acre property we explore.

### Getting there by car:

From intersection of M-72 and M-22 in TC: Go north on M-22 1.2 miles, turn left onto Cherry Bend Rd. Go 2.0 miles down Cherry Bend Rd., turn left onto Strang Rd. Go 0.2 miles down Strang Rd. and park on shoulder of the road, hike will commence from there.

From County Road 641 and Cherry Bend Rd. intersection: Go towards Traverse City on Cherry Bend Rd. for 2.1 miles, turn right onto Strang Rd. Go 0.2 miles down Strang Rd. and park on shoulder of the road.

**Bike or Hike:** on the TART trail and meet us there! Park at the TART lot on Cherry Bend Road, just off M-22, next to Cherry Bend Animal Hospital. It's less than a mile out to the farm. For more info on the TART Trail, visit [www.traversetrails.org](http://www.traversetrails.org) or call 941-4300.

Take note: Please stay on the trail unless you are on a guided hike. We do not yet own this property.



## GET IN ON THE SUMMER ACTION AT KEHL LAKE

This is a big year for the 180-acre Kehl Lake Natural Area (KLNA). It is our oldest Natural Area and one that is dearly loved by those who enjoy its two miles of trails, spring wildflowers, serene view of the lake and spectacular bird watching. It's also in need of some TLC. Each Conservancy Natural Area or Preserve is on a three-year restoration and maintenance-rotating schedule to ensure we take care of the places we all adore. This year, we'll focus our efforts on KLNA.

What's in store for Kehl Lake this summer? You are invited to the upcoming energetic Saturday work bees, docent-lead hikes, or to become a Stewardship Supporter of the KLNA through our Adopt-a-Natural Area program.



*Docent Mary Lyons at Kehl Lake kiosk at the beginning of one of her popular hikes.*

### SATURDAY WORK BEES

Saturday work bees will take in replacing the sign at the entrance, updating the kiosk, re-grading the parking area and installing a split-rail cedar fence to prevent accidental trampling of the vegetation. Volunteers will help clear dead trees from trails. Those with carpentry skills can replace boards in the observation deck overlooking the marsh to ensure its long life for bird watching. We'll also work to halt the invasion of canary reed grass in our marsh and help the cattails recover some ground. Finally, the Wildflower Rescue Committee will do special digs for Kehl Lake to restore plant diversity to the forest. With their help, we will plant these rescued native plants this fall. If you want to help by wielding a shovel, donating your services of either woodworking or road grading, or by hauling wood from the trail, see schedule below and check out page 13 for more information on the Work Bees.

### Saturday Work Bee Dates at Kehl Lake

Sat., June 17th	10 am - noon and 1 - 3 pm
Sat., July 15	10 am - noon and 1 - 3 pm
Sat., August 19	10 am - noon and 1 - 3 pm

see page 13 for more information

### ADOPT A NATURAL AREA!

The Kehl Lake Adopt-a-Natural Area program is another way you can help. We have many costs associated with maintaining our Natural Areas. Your contribution will support the work bees and kiosk replacement and repair, restoring native species, signage and all other activities essential to keeping our Natural Areas beautiful and



*Donors who contribute \$500 or more will be recognized at the Natural Area they have "adopted"*

pristine for generations to come. Those who donate a minimum \$500 to the Kehl Lake Adopt-a-Natural Area program will be recognized with a metal nameplate affixed on a special plaque at the entrance. If you are interested in this program or want to volunteer time or services to the Kehl Lake project, contact Stewardship Director Jenée Rowe at 231-256-9665 or email [jrowe@theconservancy.com](mailto:jrowe@theconservancy.com).



*Above, Kehl Lake's beautiful shoreline in the fall.*

*Right: workbee participants will repair the observation platform at Kehl Lake this summer.*







## FARMLAND UPDATE – A NEW DAY DAWNING FOR PRESERVING OUR WORKING FARMS?

Most of you will remember there was a community-wide effort in 2003 to establish funding for Leelanau County's existing Farmland Preservation Program—the first county program in Michigan at the time. Despite a groundswell of public support, the County Commissioners narrowly rejected placing a .75 mill property tax levy proposal on the ballot.

Since then there has been much discussion in the County—and some misconceptions—about whether a local source of dedicated funding is necessary for farmland preservation. We have attempted to answer this and other frequently asked questions in this space over the last few months. One of the more persistent myths has been that there is plenty of other government funding for farmland preservation—a myth that



**Leelanau growers produced over 93 million pounds of cherries in 1997, more than any other county in the country.**

was shattered late in 2005 when Leelanau County was denied state funding due in large part to its lack of a local source of cash “match” funds. The concept is fairly straightforward: State and Federal programs for farmland preservation are not available without a demonstration that the local community is also willing to financially support the effort. It is clear that Leelanau will need a local source of funds in order to leverage and compete for the all-important State and Federal farmland preservation dollars.

Recently, a local nonpartisan grassroots organization—Save Leelanau Farmland, Inc.—has emerged to re-energize the discourse and create the opportunity to ask our County Commissioners to reconsider the issue of farmland preservation. Like the Conservancy, Save Leelanau Farmland, Inc. understands that preserving farmland is critical to a healthy agri-tourism economy and quality of life in Leelanau. It's also a good investment for the tax base, because farmland is a net gain for the tax base and conventional residential subdivision development is a net loss. And, Save Leelanau Farmland, Inc. knows that this is not a new idea; locally funded farmland preservation programs have been successful in numerous communities across

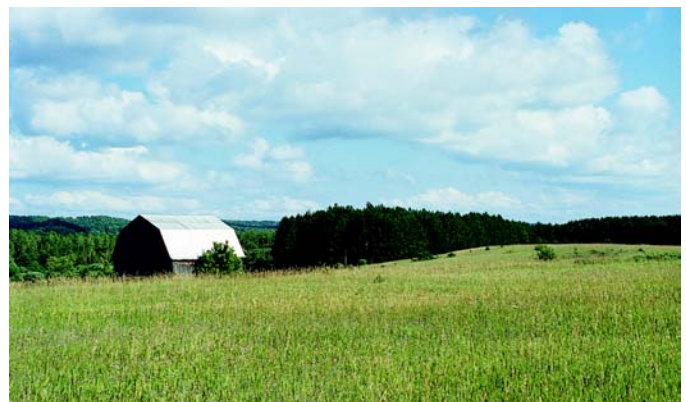


**Agriculture contributes as much as \$50 million annually to Leelanau's economy**

the nation. Some are decades old and still going strong.

Save Leelanau Farmland, Inc. has informed us that they need grassroots support to get this issue back on the table. If you would like know more, let your voice be heard, or have an interest in working on this vital and timely issue, contact George Wellman at [GWellman@centurytel.net](mailto:GWellman@centurytel.net) or 231.228.2612 or Kathy Turner at [thegulag@chartermi.net](mailto:thegulag@chartermi.net) or 231.271.4151.

Questions? Call Land Protection Specialist, Tom Nelson, at 231-256-9665 or [tnelson@theconservancy.com](mailto:tnelson@theconservancy.com). As efforts to fund a viable farmland program come back to the forefront, we plan to do our part. We're teaming up with the American Farmland Trust (AFT) to try to help fill the local information gap on the benefits of a fully-funded farmland preservation program. Beginning on March 30<sup>th</sup> and continuing through the summer, we will be working closely with AFT to conduct a series of seminars on the subject. A new day for working farms in Leelanau may be dawning. Stay tuned.



**Between 1990 and 2000, 1,500 acres of farmland were converted to homesites.**



## LETTER FROM MARTHA TEICHNER, CONTINUED FROM PAGE .

the land I wanted so desperately to buy was too high for me to manage alone. I fully expected to be told nothing could be done, but instead, the Conservancy offered to help. It was agreed my share would be \$200,000, money that would come ultimately from refinancing my New York apartment. The Conservancy would provide the rest from its own resources and from fund-raising.



Borrowing \$200,000 just to give it away is frightening, but I did it with great joy and no hesitation. If I had turned my back on the opportunity to preserve land that is as much a part of me as my name, my face, my blood, I don't know how I would have been able to live with myself. We had to act quickly or the property would have been developed in a matter of weeks.

During the negotiations, it was not clear to me that we would succeed, but then I got the call that there was a signed agreement. I can honestly say it was one of the happiest mo-

ments of my life. In an article I wrote in 1996, I said I hoped my twenty acres wouldn't be the last donation of land around Lime Lake. For years nothing happened. When I heard that if we could pull off this purchase, Jean Raymond was going to give her land to the Conservancy, I was ecstatic. My dream was finally coming true.

I've only ever envied the rich for one thing, and that is their ability to marshal sufficient resources to do good. I feel lucky to have been the catalyst, so that the resources of many could be marshaled for the good of Lime Lake.

It's almost as if some knowing hand aligned the stars so this purchase could happen. Not being particularly religious, I'd like to think that somehow my parents, together again under their pine tree in the cemetery, conspired to make sure I was where I needed to be at just the right moment. This particular piece of land was the backdrop for their life together. It gave them great happiness. It gave me an important part of my identity, my sense of the world; so it was time to repay the favor in kind.

I guess I ought to believe in Fate.

## THE NEW NARROWS POWER LINE—A SMART MOVE

*By Jenee Rowe, Stewardship Director*

On a sunny winter day on my way home from work I stop off at the Narrows. I've come to view the construction that is underway to accommodate a new Consumers Energy power line.

You may have read accounts in the *Leelanau Enterprise* of our on-again, off-again negotiations about the placement of the new line. Happily, negotiations ended last December with a result that places the new line crossing at the north end of the Narrows. It will run parallel to an existing line, instead of an earlier plan that would have cut a swath through the wetlands that make up our Leugers Preserve at the Narrows. These fragile wetlands will be forever protected as originally intended.

The champions of redirecting the power line away from the pristine wetlands in the Leugers Preserve are the neighbors, who worked closely with Consumers and the Conservancy to redirect the line.

Now, construction is underway. Crews have been in to cut trees along the new route. Natural resource professionals from Consumers have worked closely with Conservancy staff to minimize soil compaction and other damage to our property there.

Though the clearing by Consumers looks devastating from the water, everything possible was done to decrease the impact on our land. Consumers waited as long as possible before beginning to cut the trees along the new line to see if the ground would freeze to decrease soil compaction. Because of the mild winter the ground did not freeze. Instead, Consumers used log mats to bring equipment in and out to minimize damage.

I'm comforted by the knowledge that in the coming months trees and other flora will begin to leaf out, and the greenbelt of vegetation along the lakeshore will protect the shoreline. The harsh cut I view today will be less apparent. Some of the cedar trees removed from the area have been saved and will be dried to eventually become fence posts for a future trail system and parking area.



*The tall tree in the center of the photo is the beloved white pine referred to in this article*

I leave the construction site and head south toward the original power line site in the southern part of the Narrows Preserve. One of my favorite lone white pines still towers over the Narrows. A pink survey flag waves nearby. I shudder to think that my beloved pine would have been a casualty of the original line. Slugging through the hummocks and over wind-downed cedar trees, I follow the rest of the pink flags. I rejoice that the flags now mark only the route that might have been, thanks to the caring neighbors of the Narrows.



### LEELANAU PRESERVERS

## LEELANAU PRESERVERS: \$200,000 AND GROWING!

Leelanau Preservers is a gift-giving program where donors can preserve land in the name of someone they love. Donors can also preserve land in their own names. The program began four

years ago and last year alone raised \$65,000 for land protection, bringing the program total to \$200,000, helping to preserve more land!

### TILES COMING SOON!

Another new element helped to add to the program's popularity: tile recognition for those who reach the one-tenth acre (\$500) milestone. Once this much land or more has been preserved in your honor, a beautiful hand-made tile with your name on it will be mounted at our Leland Village Green.



Expect to see 71 tiles mounted sometime this summer on the concrete circular wall that surrounds the big maple tree in the center of the Green, along with other tile art that explains the program. A dedication of the new tile wall will be held as soon as the tiles are mounted. Stay tuned for date and time.

### CONSERVANCY KIDS - OFF AND RUNNING!

Last year some 400 expressions of love for Leelanau were given in the form of Preserver gifts—over 100 of them to children. These children are now a part of our "Conservancy Kids" program. Their gift package included a special sticker, hiking booklet and the chance to claim a woodland creature finger puppet once they visit three of our Natural Areas.

Conservancy Kids also receive monthly emails from our own Ms. Wizzle, like this one:

**QUESTION:** "What smells something like a skunk, looks like decaying meat, makes its own cozy 72 degree space inside a hood, is found in moist areas and along stream banks, and is blooming now?"

**ANSWER:** It is the first "flower" to bloom in the spring....skunk cabbage...and it attracts the first flies of the year in order to help the tiny flowers inside become pollinated so that they can then make seeds. The large leaves will grow later. Look for this heat generating "flower" and check it out! You won't have any trouble identifying it! Don't try to eat this cabbage, however."



If you would like to get on our Conservancy Kids email list, contact [cfaught@theconservancy.com](mailto:cfaught@theconservancy.com)



## BLUES RULE

The biggest snowstorm of the season cleared just in time for our Annual Blues at the Bluebird event in early February. Once again, Conservancy supporters danced the night away to the soul-filled, toe-tapping blues of Mojo and the Boogieman from Charlevoix. An enthused crowd of 150 enjoyed a delicious buffet and great service at the Bluebird Restaurant in Leland, longtime super-hosts of this popular event. The Conservancy netted over \$4,000 for land protection. Special thanks to Skip and Lynn Telgard of the Bluebird and our sponsors: Leelanau Enterprise, Biggs Construction Service, Eastling Construction Company, Dr. Russ LeBlanc and Community Chiropractic Center, the Law Firm of Gray, Ford and Seaman, Jim & Barb Varley and Jim & Pat Ganter, Jack & Susan Seaman, and Traverse Legal, PLC.



## SPRING/SUMMER 2006 HIKES AND EVENTS

**Important Note:** We are pleased to offer this schedule of hikes and programs, led by our knowledgeable volunteer Docents and staff. Do dress according to weather. So that we may provide the best experience possible and be fully prepared, we require (and appreciate!) advanced registration. Most hikes last around two hours unless otherwise noted. Please call: 231-256-9665 to register and if you have further questions about directions. For a complete look at all our Natural Areas and Preserves, refer to our Natural Areas Guide or our website: [www.theconservancy.com](http://www.theconservancy.com). For directions, visit our website or call 256-9665.

**Saturday, April 8<sup>th</sup>**

**10 am**

**DeYoung Natural Area on Cedar Lake**

Join John Scott, amateur naturalist and the

Conservancy's Anne Shoup for a tour of this 145-acre historic farmstead with nearly a mile of frontage on Cedar Lake. Learn about the history of the land and its natural features, and what plans are unfolding for this spectacular piece of land in Elmwood Township.

**Note:** Naturalist-led hikes will be held at this property approx. every two weeks throughout the summer. Dates are listed chronologically in this schedule.



**Friday, April 21<sup>st</sup>**

**3 pm**

**DeYoung Natural Area on Cedar Lake**

Hike led by Stewardship Director Jenee Rowe. See April 8 description of hike.

**Friday, May 5<sup>th</sup>**

**3 pm**

**DeYoung Natural Area on Cedar Lake**

Hike led by Land Protection Specialist Tom Nelson. See April 8 description of hike.

**Saturday, May 6<sup>th</sup>**

**10 am to noon  
and 1 pm to 3 pm**

**Hike and Work Bee in the Future Narrows Natural Area!**

Come learn about some of the ways we care for our natural areas and preserves with Stewardship Director



Jenee Rowe. Learn about managing former farm fields for wildlife habitat, about sustainable forestry practices for pine stands and about native plants. Join resource professionals from the Leelanau Conservation District, forester Daniel Shillenger, and native plant specialist Chris Garthe on a hike through the property. The afternoon will be a workbee to help prepare for trail building in coming years. Meet on N. Lake Leelanau Drive about a mile west of Eagle Highway. Park on the shoulder.

**Sunday, May 7<sup>th</sup>**

**1 pm**

**Dunes, Birches and Beyond at Houdek Dunes**

This Natural Area is 330 acres of majestic wildlife inhabited land. Join Docents Marsha Buehler and Bobbie Poor to learn more about this incredible tract. You will travel near the sweeping dunes and picturesque clumps of century-old birch trees.

**Thursday, May 11<sup>th</sup>**

**10 am**

**Habitats of Kehl Lake Natural Area**

Explore meadows, old growth woodlands, water and shoreline habitats to learn about native plant species and wildlife that call these habitats "home." Docent Ann McInnis will show you some of the hidden secrets that lie beyond the paths.

**Tuesday, May 16<sup>th</sup>**

**10 am**

**Songs of Kehl Lake Birds**

Morning is the prime time to see and hear the wonderful birds of Leelanau County. It's also the perfect time to enjoy dew-covered wildflowers lining the trails. Join Docent Mary Lyons and special guest Norv Hall on this hike that will help you identify many species of birds from their song and flight.



**Saturday, May 20<sup>th</sup>**

**10 am**

**DeYoung Natural Area on Cedar Lake**

Leaders to be announced.

See April 8 description of hike.

**Thursday, May 25<sup>th</sup>**

**10 am**

**Bird Songs, Wildflowers and More at Whaleback**

Learn to identify the songs of birds, enjoy the spring flower show, look for evidence of animal activity...all while hiking up this glacial moraine to enjoy the spectacular view of Lake Michigan. The view of the Manitou Islands and Pyramid Point will leave you in awe of the incredible beauty from this vantage point.



**Saturday, May 27<sup>th</sup>**

**1 pm**

**Explore the Teichner Preserve**

In 2005, the Leelanau Conservancy acquired additional land to expand the incredibly beautiful Teichner Preserve. Docent Tom Dunfee will lead you through the upland portion down to the lowlands bordering Lime Lake. Visit the giant chestnut tree and catch glimpses of scattered wildlife as you walk through this parcel.

**Sunday, May 28<sup>th</sup>**

**10 am**

**The Spring Wildflowers of the Belanger Creek Preserve**

Revel in spring's gifts on a woodland walk with Docent Jack Schultz. Belanger Creek is rich in diversity and the scent and beauty of wildflowers should be at their peak. This sensitive area is open to guided tours only. Plan on getting your feet wet and muddy.

**Friday, May 26<sup>th</sup> and**

**Saturday, May 27<sup>th</sup>**

**9am - 4pm**

**Sunday, May 28<sup>th</sup>**

**noon - 4 pm**

**Annual Wildflower and Perennial Plant Sale at Leland Village Green**

Purchase rescued Leelanau wildflowers such as ferns, trout lilies, trillium as well as quality perennials for your spring planting! See story on page 19.



**Thursday, June 8<sup>th</sup>**

**10 am**

**Survival Strategies in the Houdek Dunes Natural Area**

Explore woodlands, dunes, meadow habitats while discovering strategies animals and plants use to survive in each. Learn a bit about the history and geology of this beautiful place with Docent Ann McInnis



**SPRING/SUMMER 2006 HIKES/EVENTS**

**Saturday, June 10<sup>th</sup> 1 pm**  
**Tour the DeYoung Natural Area on Cedar Lake**  
Leaders to be announced.  
See April 8th description of hike.

**Sunday, June 11<sup>th</sup> 1 pm**  
**The Wildflower Forest of Whaleback Natural Area**  
Whaleback's forested bluff rises 300 feet above the shore of Lake Michigan. Hike with Docent Tom Dunfee up the 1-mile path under the canopy of lush green trees. Discover the beauty of the forest floor full of wildflowers. The hike up the path is steep and strenuous.

**Tuesday, June 13<sup>th</sup> 3 pm**  
**A Tea Party at the Leland Village Green**  
Docents, Marsha Buehler, Bobbie Poor and Mary Lyons invite you to a tea party at the Leland Village Green. They'll offer tea and a tour of these beautiful gardens filled with blooming perennials and shrubs. Please, you must register for this event! Call 256-9665.



**Saturday, June 17<sup>th</sup> 10 am to noon**  
**1 to 3 pm**  
**Kehl Lake Natural Area Work Bee**  
Help care for this land -- tasks and jobs abound. See story on page 8 to read about all the projects planned. Meet in the Kehl Lake parking area. If you want to stay for both sessions, bring a sack lunch.

**Sunday, June 18<sup>th</sup> 2 pm**  
**Father's Day Hike at Kehl Lake**  
Summer is only a few days away! Can you feel it in the air? Can you smell the clean, fresh scents that surround the beginning of this joyous season? Today is also Father's Day. This would be a wonderful treat to take your father on an easy and peaceful hike.



**Wednesday, June 21<sup>st</sup> 7 pm**  
**A Twilight Prowl at Houdek Dunes**  
Welcome summer with Docent Ann McInnis on this twilight prowl to discover the activities of wildlife here. The tracks, trails, traces and sounds will help in telling the story of life in this beautiful 330-acre Natural Area.



**Saturday, June 24<sup>th</sup> 1 pm**  
**DeYoung Natural Area on Cedar Lake**  
Leaders to be announced.  
See April 8 description of hike.

**Tuesday, June 27<sup>th</sup> 10 am**  
**Summer in Full Swing at Kehl Lake**  
The shimmering waters of Kehl Lake and depths of the old growth woods will add to your peaceful and beauty-filled tour with Docents Mary Lyons and Bobbie Poor.

**Sunday, July 2<sup>nd</sup> 10 am**  
**A Scenic Exploration of Houdek Dunes**  
Docent Tom Dunfee will lead you on a hike around this incredible 330-acre Natural Area. Learn about the geology that helped form the dunes. This area has some of the most beautiful characteristics and diverse topography in all of Leelanau County.

**Thursday, July 6<sup>th</sup> 10 am**  
**Cathead Bay Wildlife Corridor**  
Explore the wildlife communities found within this part of the Conservancy's Cathead Bay Wildlife Corridor Greenway Project. Learn of efforts underway to save and restore interconnected quality wildlife habitats. Docent Ann McInnis will begin this hike at the Finton Natural Area and will end up on the McInnis Conservation Easement property.

**Sunday, July 9<sup>th</sup> 2 pm**  
**The Teichner Preserve – A Little Upland – A Lot of Swamp**  
This mostly wooded Preserve has a variety of upland and lowland conditions and contains several tree species that are rare in Leelanau County. Learn all about it with Docent Jack Schultz. Bring foot gear for wet conditions and bug repellent.

**Wednesday, July 12<sup>th</sup> 10 am**  
**Summer Morning at Whaleback**  
Take a hike up the 1-mile path with Docent Bobbie Poor to the top of Whaleback. The lush green forests will provide pleasant scenery as you work your way up. Expect a steep, rigorous climb. You'll be rewarded with beautiful views of the Manitowish, Pyramid Point and Lake Michigan.

**Wednesday, July 12 9 am**  
**DeYoung Natural Area on Cedar Lake**  
Leaders to be announced.  
See April 8 description of hike.

**Saturday, July 15<sup>th</sup> 10 am to noon**  
**1 to 3 pm**  
**Kehl Lake Natural Area Work Bee**  
Help care for this land -- tasks and jobs abound. See story on page 8 to read about all the projects planned. Meet in the Kehl Lake parking area. If you want to stay for both sessions, bring a sack lunch.

**Wednesday, July 26 9 am**  
**DeYoung Natural Area on Cedar Lake**  
Leaders to be announced.  
See April 8 description of hike

**Save the date!**  
**Thursday, August 3: Annual Friends Picnic and Silent Auction at the DeYoung Natural Area on Cedar Lake.**

**Saturday, August 19<sup>th</sup> 10 am to noon**  
**1 to 3 pm**  
**Kehl Lake Natural Area Work Bee**  
Help care for this land -- tasks and jobs abound. See story on page 8 to read about all the projects planned. Meet in the Kehl Lake parking area. If you want to stay for both sessions, bring a sack lunch.



## Staff news, continued from page 2

the area since the mid-1960s. She attended Wells College in upstate New York and completed her Masters in Information and Library Science with a specialization in legal information at Pratt Institute in New York City. After heading the re-



*Jill Porter has joined our staff*

search group in one of New York's largest law firm libraries, Jill became Director of Library Relations at the Practicing Law Institute where she was responsible for managing PLI's library customer relations outreach. She moved to Leelanau County in 2000 and telecommuted to her job for the next five years.

Jill left PLI in 2005 and has been enjoying a short "retirement" volunteering with the Master Gardener Association of Northwest Michigan, taking courses at Northwestern Michigan College, enjoying long walks with her two dogs, and taking on a couple of freelance marketing projects. "It seems that the past few months are the first in a long time that I've really gotten to enjoy the area. For the past several years, I've spent too much time in airports! It's good to be staying put in the place I've called home since the 1980s."

A volunteer meeting with Carolyn Faught got Jill thinking that the Conservancy was an ideal place to work, one that matched her skills with her ideals. She looks forward to working with the Conservancy's energetic and committed staff members and volunteers.

### Future Fisherwoman

Welcome Maria Ann Heiman, born to Land Protection Specialist Matt Heiman and his wife, Karrie Ann Zeits, in early February. Matt, an avid fisherman, describes his new daughter as an eight pounder, 21-incher who is "calmed by the sound of running water which indicates a high probability as a future fisherwoman." Big brother Casimir (age 2) is already hooked.



## THEY WAYS THEY GAVE

We were fortunate to have two fantastic interns, Marc Chipault and Jenny Glazer, spend six week with us this winter. In their short time here they helped us reorganize and copy easement files, took on coordinating our very successful 1<sup>st</sup> Annual Volunteer Expo and helped to make needed maps to monitor our Natural Areas and Preserves. Mark and Jenny have rich backgrounds in volunteering and natural resources with a focus on wildlife. Both are Kenyon College graduates and Marc has strong ties to Leelanau through his family's vacation home in Northport.



*Marc Chipault and Jenny Glazer, volunteered in the office and in the field for six weeks this winter.*

Sadly, in the midst of their internship, Marc's mom, Geri Chipault passed away after a long battle with cancer. Marc's family decided to designate the Conservancy as a recipient of Geri's memorials, specifically to our Tip of the Peninsula Lighthouse West project near Northport. Since then, 43 donations totaling nearly \$3,000 have arrived. Marc's dad, Fred Neidhardt, said he was very pleased with the response. "Geri was great admirer of the concept and the work of the Leelanau Conservancy, and her friends knew what her values were. So choosing the Conservancy just struck a resonant chord in all the people who cared about her."

We are grateful for all the gifts in Geri's memory, which have come at a fortuitous point as we struggle to complete this project. Grant funds we had counted on were cut by half and we have been working hard to make up an unexpected \$350,000 shortfall. So in addition to all Marc and Jenny gave to us in six weeks, Marc's idea to designate his mother's memorials will help forever protect 640 feet of Lake Michigan shoreline critical to our migrating birds. No doubt his mom would be pleased too.

Marc and Jenny have since moved on to another internship in Nevada where they are helping to document sage grouse populations. We wish them well and appreciate all the good they did while here.



## 65 ATTEND OUR FIRST “VOLUNTEER EXPO”

In early February, folks interested in volunteering with the Conservancy attended our 1<sup>st</sup> Annual Volunteer Expo to learn about the many ways they can help. We were amazed when our office overflowed with volunteers ready to support the place they love by supporting the Leelanau Conservancy. Sixty-five people came to the presentation and coffee hour and since then, volunteers have helped by donating a new coffee pot, helping with mailings, building wood duck nesting boxes, becoming a docent, signing up for the Volunteer Stewardship Network, attending an Auction Committee meeting and more. If you were unable to attend but have an interest in helping, call or email [cfaught@theconservancy](mailto:cfaught@theconservancy) for a volunteer packet.



### THANKS FOR YOUR HELP!

Thanks to Mary Lyons, Nora and Charlie Bumb, Marsha Buehler for **putting up posters** and to Dennis & Ericka Ferguson for **picking up our recycling and making duck nesting boxes for use in our natural areas.**

The following people helped us with **winter mailings:** Bart and Gail Ingraham, Barb Hatt, Penny Gordon, Treva DeJong, Cathy Schocker, Bob Hagerman, Moonyeen Fitch, Bob and Janet McKelvey, Judy Frederick, Nancy Stewart, Pauline McClure, Rita Dick, Lou Ristine, Dennis and Erika Ferguson, Shirley Wheatley, JoAnn Sahs.

Thanks to Marnie Kohler, Franc & Mary Ann Krebs for **distributing our brochures.**

We're grateful to Tom VanZoeren for help with **Stewardship mapping** and to Chuck Whetsel for his help with the **Volunteer Stewardship Network.** Special thanks to the Stewardship Committee for helping at our Volunteer Expo.

Kathy Rymal and Betsy Johnson are helping to **organize our auction** - Thank you!

### OUR NEW WEBSITE—GET A LEELANAU FIX!

We hope that by the time you read this our new website will be up and running. Jeff Corbin is one of our amazing board members who has designed the new site. He spent hours editing, transferring data and choosing photos. Part of Jeff's goal, he told us, was to "hit people over the head again and again with spectacular images of Leelanau." There are dozens of gorgeous shots on the site, so if you're far away and need a Leelanau fix, visit now! We hope you'll enjoy the crisp, clean, reorganized and very user-friendly new site. The web is becoming more and more important in helping us communicate our message and reach people all over the world who care about Leelanau. Thanks, Jeff, for all your hard work and your great eye for design: [www.theconservancy.com](http://www.theconservancy.com)



*Jeff Corbin, Board Member and Volunteer extraordinaire, working on the new design for the Conservancy's website*

### LEAVE A LEGACY

We would be honored to have you as a member of our Heritage Society, which includes Conservancy supporters who have chosen to bequeath the Leelanau Conservancy through wills, charitable remainder or lead trusts, gifts of insurance, retirement plans or other estate planning arrangements. Many of you have already named the Conservancy as a beneficiary in one way or another. If you have done so and not yet informed us, please let us know: we would like to list you as a member of our Heritage Society to recognize your commitment and because your actions may help to inspire others. If you have questions about the Heritage Society or would like to learn more about your options, call Development Director Anne Shoup (256-9665) or email [ashoup@theconservancy.com](mailto:ashoup@theconservancy.com).



## WELCOME NEW MEMBERS!

This list reflects the individuals/families who have joined between September 17, 2005 and March 3, 2006. It may also include returning or lapsed members. Those who donated to a project fund like DeYoung are also included because project donors become automatic members for one year. Thanks to all of you!

Mr. Geoff Abbate  
 Ms. Susan J. Adams  
 Mr. and Mrs. James Allen  
 Mr. and Mrs. Donald L. Allington  
 Mr. Stephen Bahlke  
 Ms. Jane Baker  
 Mr. and Mrs. Todd Barr  
 Mario Batali and Susi Cahn  
 Mr. and Mrs. William Bellinger  
 Mrs. Patricia Berry  
 Mr. and Mrs. Vinson L. Bidlingmeyer  
 Mr. and Mrs. Charles W. Binder  
 Mr. and Mrs. Ronald Bindle  
 Col. and Mrs. Brian Bishop  
 Mr. and Mrs. Terry M. Bishop  
 Mr. and Mrs. John P. Bolan  
 Mr. and Mrs. Jay Bourdon  
 Faryl Boyl and Julie Johnson  
 David and Susan Brandes  
 Mr. and Mrs. David Buchanan  
 Michael Busch and  
 Daryl Allison-Busch  
 Neil Caliman & Monica Stafford  
 Mr. David G. Card  
 Mr. and Mrs. Mark Carlson  
 Dr. and Dr. Ceferino Cata  
 Mr. Steve Channer  
 Ms. Salli Christenson  
 Neil and Amy Coleman  
 Mr. and Mrs. E. Neal Cory, II  
 Mrs. Catherine Babcock Cranor  
 Mr. and Mrs. Barry F. Cutler  
 Rev. Michael Danner  
 Mr. Edward P. Darlington  
 Jane and Vance Diggins  
 Ms. Kathleen Doherty  
 Paula and Bryce Dreeszen  
 Bud and Gretchen Edgren  
 Mr. and Mrs. Robert Elliott  
 Mr. Roger Favorite  
 Mr. and Mrs. Gregg Fazzoni  
 Mr. and Mrs. Robert W. Fehrmann  
 Ms. Beth Fife  
 Mr. Harry J. Finke, IV  
 Mr. and Mrs. James Fowler  
 Ms. Rita M. Garn  
 Mr. and Mrs. Robert Goff  
 Mr. and Mrs. Donald R. Goheski  
 Mr. and Mrs. Bill Goshorn  
 Dr. and Mrs. Jack W. Gottschalk  
 Ms. Jean Greene  
 Mr. and Mrs. Richard Grewe  
 Mr. and Mrs. Eric Grombala  
 Ms. Margaret Hackley  
 Mr. and Mrs. Robert Hanpeter  
 Mr. and Mrs. Michael J. Harris

Mr. Tom Hearron  
 Robert Herman  
 Anne and Tony Hill  
 Mr. Wesley W. Horner  
 Holly Hottinger  
 Randi Hottinger  
 Sara and Graham Irwin  
 Mr. John H. Katt  
 Mr. Thomas Kawecki  
 Mr. and Mrs. Mike Keen  
 Mr. Donald King  
 Karl Kinkema and Pamela Bratt  
 Mr. and Mrs. R. Marc Kippen  
 Ms. Karen Klix  
 Mr. and Mrs. Doug Kohl  
 Mr. Daniel Kostrzewa  
 Mr. and Mrs. Roderick Krause  
 Mr. Jonathon Kunz  
 Tom and Heidi Kussurelis  
 Jeffrey Kyff & Jan Joerin  
 Ms. Natasha Lapinski  
 Mr. and Mrs. R. Scott Larigan  
 Mr. George Lee  
 Mr. Jeff Leech  
 Dave Lloyd and Sue Williams

Jackie and Arie Lock  
 Nancy and Dick Mahany  
 Ms. Pamela McCord  
 Mr. and Mrs. Brian Mier  
 Mr. and Mrs. Bob Mellen  
 Mr. and Mrs. Mike Miller  
 Mr. and Mrs. John Mitchell  
 Mr. and Mrs. Charles Moffett  
 Paul and Carolyn Montie  
 Ms. Jennifer R. Moore  
 Mr. and Mrs. Robert Mothershead  
 Ms. Alice Neild  
 Mr. and Mrs. David Nitschke  
 Gyo and Courtney Obata  
 Mrs. Ellen Offen  
 Ms. Mary Peterson  
 Mr. and Mrs. Randy Petresh  
 Mr. and Mrs. George H. Prewitt, Jr.  
 Mr. and Mrs. Harry Q. Radcliffe  
 Mr. and Mrs. Robert A. Reinhard  
 Mr. and Mrs. James Ridgway  
 Mr. and Mrs. Charles Rush  
 Dr. and Mrs. Edward J. Rutkowski  
 Ms. C. Lynn Sagar  
 Mr. and Mrs. John H. Schaff

Mr. and Mrs. Karl Schlabach  
 Mr. and Mrs. Alfred Schrashun  
 Jim and Cathy Searing  
 Mr. and Mrs. James C. Shook  
 Mr. and Mrs. Carl Slater  
 Mr. and Mrs. Michael Smith  
 Ms. Miki Snyder  
 Paul Solli and Kristine Ball  
 Mr. and Mrs. Justin A. Stanley, Jr.  
 Mr. and Mrs. David Stevenson  
 Ms. Colleen Stimmel  
 Mr. and Mrs. Gregory Suhajda  
 Mrs. Elizabeth H. Sutton  
 Rev. and Mrs. James R. Tozer  
 Mr. and Mrs. Frans Van Liere  
 Mr. and Mrs. Neill Varner  
 Mr. and Mrs. Mark Veenstra  
 Mr. and Mrs. Bruce S. Wagner  
 Bill and Martha Wilczynski  
 Ms. Catherine Williams  
 Peter and Michele Worden  
 Ms. Elli A. Workum  
 Linda and Joel Zylstra  
 Ms. Carol deProse



## WELCOME NEW SUSTAINERS!

We now have 392 individuals/families who make an annual pledge of \$500 or more to support the operations of the Conservancy, giving us the consistency we need to insure we meet our long-term goals for protecting this very beautiful place. Sustainers are special people with special events held in their honor. To learn more about joining the Sustainer's Circle, call Gayle at 256-9665 or email her at [gayle@theconservancy.com](mailto:gayle@theconservancy.com). Thanks to all our loyal Sustainers. Your support is critical to our ongoing success.

Bruce and Judy Balas  
 Anonymous  
 Susan Ager & Larry Coppard  
 John Shoaff & Julie Donnell  
 Mr. and Mrs. Michael Dow  
 Mrs. Elizabeth Garber  
 Feldman  
 Charles A. Greathouse  
 Mr. James S. Kemper, III  
 Lyn and John Motlow

Mark Cantrell and  
 Kathy Rymal  
 Daniel Shoup &  
 Anne Bishop Shoup  
 Dr. and Mrs. Michael  
 Steichen  
 Tim and Sharon Stein  
 Richard Cooper and  
 Jan Tennant



*Sustainers (l to r) Jan Tennant, Marilyn Warburton, Dick Cooper and Harvey Warburton*





## HONORARIUMS & MEMORIALS

### Gifts In Honor of:

**JOSEPHINE BROKAW**

Mr. and Mrs. Alan J. Brokaw  
Ms. Gretchen Page

**NORMAN T. BROKAW**

Mr. and Mrs. Alan J. Brokaw

**FRED CAMPBELL**

Carolyn and Paul Montie

**DAVID CASSARD**

1031 Exchange Alternatives

**KAREN CHASE AND DAVID BELLIZI**

Mrs. Eleanor Moody

**THE GEORGE COCHRAN FAMILY**

Mr. and Mrs. Robert J. Moore

**THE PHILIP L. COCHRAN FAMILY**

Mr. and Mrs. Robert J. Moore

**DREW CUMMINS**

Mr. Curtis A. Cummins

**B. PARKER FAIREY**

Ms. Leigh Fairey

**BILL AND NANCY GARD**

Mrs. Molly M. Harrison

**STEVE AND EDIE GARDNER**

Mrs. Molly M. Harrison

**PAM, LARRY and CASH GORDON**

Doris and Michael Harren

**RICK AND ENID GRAUER**

Mr. and Mrs. Bob Mellen

**THE CHRISTOPHER HABER FAMILY**

Mr. Jonathon Haber

**ED AND JOAN HANPETER**

Mr. and Mrs. Robert W. Hanpeter

**DR. JERRY HARRISON, LEELANAU  
VETERINARY CARE**

Mr. and Mrs. Kent N. Holton

**JAMES HAWKINS**

Ms. Nancy Robertson

**HER FOUR GRANDCHILDREN**

Ms. Charlotte Foote

**HANK AND MOLLY HOLT**

Eron Earley-Thiele

**KENNETH AND SHIRLEY HURLIN**

Peter Hurlin & Kristin Ellingsen

**MIKE JACOBSON**

Mr. and Mrs. Edward Beuerle

**IN HONOR OF MARY JELLMAN**

Ms. Melanie Scholten

**CHRIS AND STEVE JOHNSON**

Mr. Stephen S. Bahlke

**LOUISE KAWECKI**

Mr. Thomas G. Kawecky

**BEA KIMMERLY**

Ms. Catherine W. Stephenson

**ANNE KINZIE AND MOLLY  
HARRISON**

Mrs. Mildred Anthony

**KONRAD AND BARBARA KOHL**

Mr. and Mrs. Doug Kohl

**JOE LAUER**

Tim and Rae Welch Johnson

**ANN AND DOUG McINNIS**

Mr. and Mrs. Edward McInnis

**CLYDE McKENZIE**

Ms. Susan E. Konop

**ELEANOR MOODY**

Karen L. Chase & David Bellizi

**BERTHA MORROW**

Mr. and Mrs. Leroy H. Foerster

**BILL RASTETTER**

Carolyn and Paul Montie

**ROBERT AND ARLONE RUSSEL**

Mr. and Mrs. James M. Russel

**LOUISE J. THOMAS**

Ms. Suzanne Mullin

Ms. Mimi Mullin

**JEFF AND CRAIG TIGGLEMAN**

Mr. and Mrs. Howard J. Leikert

**JOAN TODD**

Mrs. Elizabeth H. Sutton

**KATHY TURNER**

Mrs. Marion K. Purdy

**BARBARA WEBER AND FAMILY**

Ms. Kathleen Doherty

**MALLHEA WIESEN AND TRISTA  
HARTER**

Ben Fowler and Judy Jensen

### Happy Birthday!

**DR. GREGORY S. BROWN**

Dr. and Mrs. Ernie P. Balcueva

**90<sup>th</sup> BIRTHDAY OF BARBARA K.  
FELD**

Jonathan Feld & Shelley Longmuir

**90<sup>th</sup> BIRTHDAY OF JANICE FISHER**

Mr. and Mrs. Wilfred J. Larson  
Scot and Elizabeth Zimmerman

**50<sup>th</sup> BIRTHDAY OF PAUL GARD**

Mr. and Mrs. James N. Shad

**90<sup>th</sup> BIRTHDAY OF DORIS  
GREENOUGH**

Thomas L. and Nancy H. Liley

### Happy Anniversary!

**TIM SPARLING AND LYNNE TOBIN**

Mr. Richard Tobin

### Retirement

**BOBBIE COLLINS' RETIREMENT  
FROM THE BOARD**

Mr. and Mrs. Douglas M. Behrendt

Mr. and Mrs. Alfons Heckl

Mr. and Mrs. Frank G. Siepker

Mr. and Mrs. Richard R. Brant

Mr. and Mrs. Gilbert A. Deibel

Tom and Gretchen Dunfee

Ms. Gayle E. Egeler

Mr. and Mrs. Richard O. Ristine

Jack and Susan Seaman

Mr. and Mrs. Warren H. Watkins

Mr. and Mrs. Randy Woods

Mr. and Mrs. George I. Liljeblad

### In Memory of a Beloved Pet

**IN MEMORY OF THEIR DOG,  
MOZART**

Mr. and Mrs. Kent N. Holton

### Memorials

**IN MEMORY OF WILLA ALBERS**

Mr. and Mrs. David T. McDowell

Mr. and Mrs. William J. Miller

Continued on next page



## HONORARIUMS & MEMORIALS

(Continued from page 17; Received between 10/24/05 and 3/7/2006)

### **IN MEMORY OF THOMAS ASHBURY** Mrs. Margaret G. Ashbury

### **IN MEMORY OF KENNETH BAILEY** Ms. Beverly M. Sporck

### **IN MEMORY OF BETTY MARY BELLINGER** Mr. and Mrs. John W. Fisher

### **IN MEMORY OF BARBARA BATT BOND** Mr. John C. Heider

### **IN MEMORY OF FRED BOOTH** Mr. and Mrs. Fred Atkinson Mrs. Lena A. Ball Mr. and Mrs. Lee A. Bowen Mrs. Nancy Elifritz Mr. and Mrs. Kent Holton Mrs. Mary Lyons Herb and Ann Nichols Robert and Ellen Pisor Mr. and Mrs. Richard O. Ristine Mrs. Betty Waite Mr. and Mrs. Lewis Wood

### **IN MEMORY OF TERRY BUCKLER** Mr. and Mrs. Lee A. Bowen Mr. and Mrs. Dale M. Gain Dr. and Mrs. Robert L. Newhouse Ms. Marjorie J. Pressell Mr. and Mrs. Brian R. Price Ms. Cleo M. Saunders Mr. and Mrs. Leo H. Stallman, Jr. Ms. Rebecca Stanchfield

### **IN MEMORY OF GARNET BURNHAM** Herb and Ann Nichols Ms. Julie Sanco

### **IN MEMORY OF GERMAINE CHIPAULT** Dr. Janet Allen Mr. and Mrs. Gerald Avrin Mrs. Marie E. Bahlke Mr. Glenn Bjork Ms. Susan M. Brown Mr. and Mrs. John E. Cermak Mr. and Mrs. Stephen Cooper Mr. Robert Deans Ms. C. Jane Deering Victor Dirita & Kathleen Kittle Julie Ellison & Mark Creekmore Mr. David I. Friedman Mr. and Mrs. Thomas Gelehrter Mr. and Mrs. John A. Gillespie Mr. and Mrs. Berny Groth Mr. and Mrs. Thomas C. Holland Mr. and Mrs. Elliot Juni Mr. and Mrs. Peter Karsner Mr. and Mrs. Thomas R. Lamont Ms. Karen A. Leigh Ms. Sura Levine Richard Linsk & Alice Telesnitsky

### **IN MEMORY OF GERMAINE CHIPAULT (con't)**

Ms. Birgette R. Lozano  
Mr. Harry L. Mobley  
Mr. and Mrs. Michael Monroe  
Ms. Ann Munster  
Ms. Elizabeth R. Neidhardt  
Mr. and Mrs. Michael J. Passalacqua  
Sumer Pek and Marilyn D. Katz-Pek  
Ms. Bernadette A. Pelland  
Mr. and Mrs. Peter J. Perez  
Mr. and Mrs. Michael Savageau  
Ms. Nicole R. Savageau  
Mr. James H. Schairbaum  
Dr. and Mrs. John C. Sherris  
Rob and Linda Shirkey  
Ms. Katherine R. Spindler  
Mr. and Mrs. Joel A. Swanson  
William Tucker & Kathy Hessert-Tucker  
Ms. Amy Vollmer  
Mrs. Elise I. Weisbach  
Mr. and Mrs. Douglas L. Whitley  
Mr. and Mrs. Philip Zaret

### **IN MEMORY OF JIM CONCANNON** Mr. Robert W. Chapman

### **IN MEMORY OF CAROLINE CORY** Mr. and Mrs. Reed E. Bartlett Mr. and Mrs. Peter A. Borden Ms. Susan J. Finke Mr. and Mrs. John W. Fisher Mr. and Mrs. Norbert W. Gits Dr. and Mrs. William R. Graf Mr. and Mrs. James M. Johnson Mrs. Mary Scott Johnson Mr. and Mrs. Robert J. Maleski Mr. and Mrs. Walter R. McCord Phil and Kathy Scherer Mr. and Mrs. James N. Shad Mrs. Elizabeth H. Sutton Mr. John B. Watkins Mrs. Alice B. Weaver

### **IN MEMORY OF BERTHA DAUBENDICK** Michigan Nature Association

### **IN MEMORY OF MARION EVANS** Mrs. Lena A. Ball Mr. and Mrs. Reed E. Bartlett Mr. and Mrs. Vinson L. Bidlingmeyer Mr. and Mrs. Frederick W. Bloom Mr. Charles M. Boesel Mr. and Mrs. Milton C. Boesel, Jr. Mr. and Mrs. Thomas H. Bond Mr. and Mrs. Peter A. Borden Mr. and Mrs. Frank A. Bracken Mrs. Avery L. Burns Mr. and Mrs. Peter S. Burr Mr. and Mrs. Edward J. Collins Mrs. Jane W. Domke Tom and Gretchen Dunfee Mr. and Mrs. John W. Fisher Mr. and Mrs. James W. Frederick

### **IN MEMORY OF MARION EVANS (con't)**

Ms. Judy L. Frederick  
Mr. Joseph Gagliano  
Mr. and Mrs. Norbert W. Gits  
Mrs. Janet E. Goettle  
Dr. and Mrs. Jack W. Gottschalk  
Mr. and Mrs. Warren K. Hinsch  
Mrs. Theresa Hitchens  
Mr. and Mrs. Earle S. Irwin  
Mrs. Mary Scott Johnson  
Mr. and Mrs. Victor S. Johnson, Jr.  
Mr. and Mrs. Walter P. Johnston  
Mr. and Mrs. Wilfred J. Larson  
Mrs. Barbara Loftus  
Mrs. Marlis Mann  
Mr. and Mrs. Charles C. McConnell  
Mr. and Mrs. Walter R. McCord  
Jim and Ellen McLean  
Mr. and Mrs. William J. Mead  
Mr. and Mrs. Richard C. Mileham  
Mr. and Mrs. Lawrence J. Noling  
Mr. and Mrs. Alvin Owsley  
Arleen Rakas Rae & James Rae  
Ms. Patricia M. Russell-Davis  
Phil and Kathy Scherer  
Mr. and Mrs. Leo G. Shea  
Mr. and Mrs. Edward H. Sichler  
Dr. and Mrs. Clayton R. Sikes  
Mr. and Mrs. William W. Steel  
Mr. and Mrs. Leonard M. Sussman  
Mr. and Mrs. Gary B. Twomey  
Mr. and Mrs. Richard L. Voss  
Mr. John B. Watkins  
Mrs. Alice B. Weaver  
Mr. and Mrs. Randy Woods  
Mrs. Joan L. Workum  
Mr. and Mrs. Lee J. Workum, Jr.

### **IN MEMORY OF WALTER AND VIOLET FEE** Mr. and Mrs. Robert Elliott

### **IN MEMORY OF CHARLES AND KATHRYN FERRERO** Ms. Gwendolyn Strong

### **IN MEMORY OF WILBERT GAUTHIER** Ceil and Pete Kadrovach

### **IN MEMORY OF RICHARD GIBESON** Ms. Ann Rogers

### **IN MEMORY OF KAREN GILHOOLY** Mr. and Mrs. Dennis Murphy

### **IN MEMORY OF JARED AND ETHEL GILLETTE** Mr. and Mrs. Robert H. Gillette

### **IN MEMORY OF FRANCES GILMAN** Mr. and Mrs. Frederick W. Bloom

### **IN MEMORY OF INEZ HAGERMAN** Mr. and Mrs. Robert L. Hagerman



## HONORARIUMS & MEMORIALS

(Continued from page 15; Received between 10//24/05 and 3/7/2006)

### IN MEMORY OF PAMELA S. HARTY

Mr. Kevin S. Harty

### IN MEMORY OF KRISTEN BRANT HAWKINS

Mr. and Mrs. Kevin T. Shaw

### IN MEMORY OF RICHARD HINTERMEISTER

Mrs. Ethel M. Wills

### IN MEMORY OF HERBERT E. HOLMES

Mrs. Dorothy B. Holmes

### IN MEMORY OF PHYLLIS RILEY HORNER

Mr. and Mrs. Keith W. Burnham

### IN MEMORY OF LAWRENCE H. HUNT

Mrs. Mary H. Hunt

### IN MEMORY OF HELEN JONES

Mr. and Mrs. Charles W. Dickerson  
Mr. and Mrs. Jack B. Frohman

### IN MEMORY OF HELEN JEAN KIPKA

Mrs. Rhea J. Benedict  
Mr. and Mrs. Burton G. Mills

### IN MEMORY OF MARGARET M. KOWALSKI

Mr. and Mrs. Jim Searing

### IN MEMORY OF GEORGE LOSIE

Birchwood Shores Preservation Assn.

### IN MEMORY OF HARRY LUND

Mr. and Mrs. David A. Lund

### IN MEMORY OF BEA MALLERY

Mr. and Mrs. Russell R. Kirt

### IN MEMORY OF BOBBIE McKAY

Thursday Night Bridge Pals

### IN MEMORY OF DAWN MERZ

Mr. and Mrs. Bruce G. Olson

### IN MEMORY OF GORDON B. MOODY

Karen L. Chase & David Bellizi

### IN MEMORY OF DR. JAMES MUDGETT

Mrs. Karen A. Mudgett

### IN MEMORY OF ART NICOLA

Ms. Ann Rogers

### IN MEMORY OF MARGARET OLMSTEAD

Mr. and Mrs. John J. Pruis

### IN MEMORY OF JAMES PORTER

Mr. and Mrs. John Brabenec

### IN MEMORY OF ANN PHILLIP

Mr. and Mrs. John C. Erb  
Mr. and Mrs. Brian R. Price  
Mr. and Mrs. William VanWesten

### IN MEMORY OF JOEL RAND

Ms. Laura Spohn

### IN MEMORY OF VIRGINIA RANDALL

Mr. and Mrs. Charles H. Chandler  
Mr. and Mrs. Robert J. Hoerner  
Mr. Timothy C. Hoerner  
Dr. Charles C. Randall

### IN MEMORY OF MRS. SABIN ROBBINS

Mrs. Rosemary R. Bennett

### IN MEMORY OF ETHEL SARYA

Dr. and Mrs. Arnold F. Sarya

### IN MEMORY OF THOMAS WILLIAM SAWYER

Mr. and Mrs. Mark E. Carlson  
Mrs. Marlis Mann  
Mr. and Mrs. Richard A. Rossman

### IN MEMORY OF SUZANNE GARDNER SCHMIDT

Mr. and Mrs. Skip Gardner

### IN MEMORY OF BRIAN SICHLER

Mr. Steve Channer

### IN MEMORY OF HOLLY SMITH

Mr. and Mrs. James R. Shannahan

### IN MEMORY OF JOSEPH M. SMITH

Mr. and Mrs. Michael T. Smith

### IN MEMORY OF ROBERT L. SMITH

Mrs. Dolores J. Smith

### IN MEMORY OF CAROLYN GOODE SNODGRASS

Mrs. Joan L. Workum

### IN MEMORY OF PHILIP STORRS

Mr. and Mrs. Peter A. Borden

### IN MEMORY OF JOHN SUELZER

Mrs. Marlis Mann  
Arleen Rakas Rae & James Rae  
Mr. and Mrs. Lee J. Workum, Jr.

### IN MEMORY OF JAY VAN ZOEREN

Mrs. Carolyn C. Van Zoeren

### IN MEMORY OF LARRY VERDIER

Ellen Kohler and Matt Cauchy  
Mrs. Paula S. Leinbach  
Mrs. Barbara Loftus

### IN MEMORY OF DAVID VISKOCHIL

Mrs. Beth Goebel

Mr. and Mrs. Steve Hegedus

### IN MEMORY OF JEAN H. WATKINS

Mr. and Mrs. Alfred H. Schrashun

### IN MEMORY OF JEAN ELLEN WHITNEY

Mrs. Rhea J. Benedict  
Mr. and Mrs. Burton G. Mills

### IN MEMORY OF VIRGINIA WOODS

Mr. and Mrs. Edward J. Collins  
Mr. and Mrs. Harry L. Weitz

### IN MEMORY OF SAMUEL YALDA

Mrs. Agnes L. Yalda



### WILDFLOWER RESCUE PLANT SALE!

The 12<sup>th</sup> Annual Plant Sale on the Village Green in Leland is coming! Last fall and this spring our Wildflower Rescue Committee dug up, potted and whisked native wildflowers out of the path of impending development. Now is your chance to purchase unusual natives like ferns, trout lilies, and trillium, along with a huge selection of nursery perennials. When: Memorial Day weekend. Sale begins Friday, May 26 and runs 9 a.m. to 4 p.m. Friday and Saturday; Sunday noon to 4 p.m. All proceeds help maintain the Village Green.

Want to help rescue wildflowers? Learn more at the group's annual meeting, Wednesday April 19 at 9:30 a.m. at the Leland Library's Munneke Room. The meeting will include coffee, a slide show and discussion.

Finally, if you know of a site where wildflowers might be saved, or are planning to excavate your own property, call Rescue chairs Patty Shea: 256-9249 or Joanie Woods: 256-7154.

**LEELANAU CONSERVANCY  
OFFICERS and DIRECTORS**

Edward and Barbara Collins, *Founders*  
Richard O. Ristine, *Honorary Chairman*

**OFFICERS**

Frank Siepker, *Chairman*  
Craig Miller, *President*  
Deborah W. Fellows, *Vice President*  
Thomas Dunfee, *Vice President*  
David Cassard, *Treasurer*  
Mary E. Lyons, *Secretary*

**DIRECTORS**

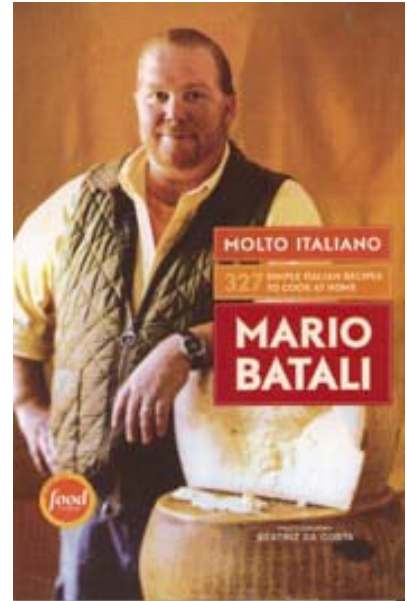
Richard Brant	Tom Dunfee	Larry Mawby
John Bull	John Erb	Jack Seaman
Jack Burton	Molly Harrison	Mary Taylor
Kyle Carr	Barbara Nelson-	Sally Viskochil
Jeff Corbin	Jameson	Warren Watkins

**STAFF**

**Brian Price**, *Executive Director*  
bprice@theconservancy.com  
**Susan Price**, *Assoc. Dir, Finance, Admin*  
sprice@theconservancy.com  
**Matt Heiman**, *Land Protection Specialist*  
mheiman@theconservancy.com  
**Tom Nelson**, *Land Protection Specialist*  
tnelson@theconservancy.com  
**Jenee Rowe**, *Stewardship Director*  
jrowe@theconservancy.com  
**Carolyn Faught**, *Communications Director*  
cfaught@theconservancy.com  
**Anne Shoup**, *Development Director*  
ashoup@theconservancy.com  
**Gayle E. Egeler**, *Membership and Outreach Coordinator*  
gayle@theconservancy.com  
**Arlene Heckl**, *Office Administrator*  
aheckl@theconservancy.com  
**Jill Porter**, *Accounting and Administrative Assistant*  
jporter@theconservancy.com

**MARIO BATALI: HE'S BACK!**

We're grateful that culinary icon Mario Batali is generously donating his services once again to raise funds for Leelanau, a place he loves. Like last year, Mario will offer a dinner for 12 as an auction item at our Annual Friends Picnic and Silent Auction. We're still working out the details—time, date, place and menu, but one thing we know for sure—it will be fabulous. To bid on this item and many others, visit our website: [www.theconservancy.com](http://www.theconservancy.com). Proxy bids will also be accepted. Read more about Mario: [www.mariobatali.com](http://www.mariobatali.com)



This year's Picnic will be held Thursday, August 3, 2006 at our newest big project—the DeYoung Natural Area on Cedar Lake! Mark your calendars now and plan to attend this event of the summer season!

Published 3 times per year. Susan Price and Carolyn Faught, Editors

**Leelanau Conservancy**



105 North First Street  
P.O. Box 1007  
Leland, MI 49654  
231-256-9665  
FAX 231-256-9693

conservancy@leelanau.com  
<http://www.theconservancy.com>

Non-Profit  
Organization  
U.S. Postage  
PAID  
Leland, MI  
Permit No. 5

